

Barrier Crash

~~CONFIDENTIAL~~



View of Island

~~CONFIDENTIAL~~



Formation of TBMs over ship
15 January 1944

~~CONFIDENTIAL~~



Captain H. L. MEADOW reading his orders
at commissioning 14 October 1943

~~CONFIDENTIAL~~



Leaving San Francisco - Golden Gate Bridge
17 November 1943

~~CONFIDENTIAL~~



First plane To Take off CVE-62 - Lieut. Comdr. SEARCY VC-63

25 November 1943.

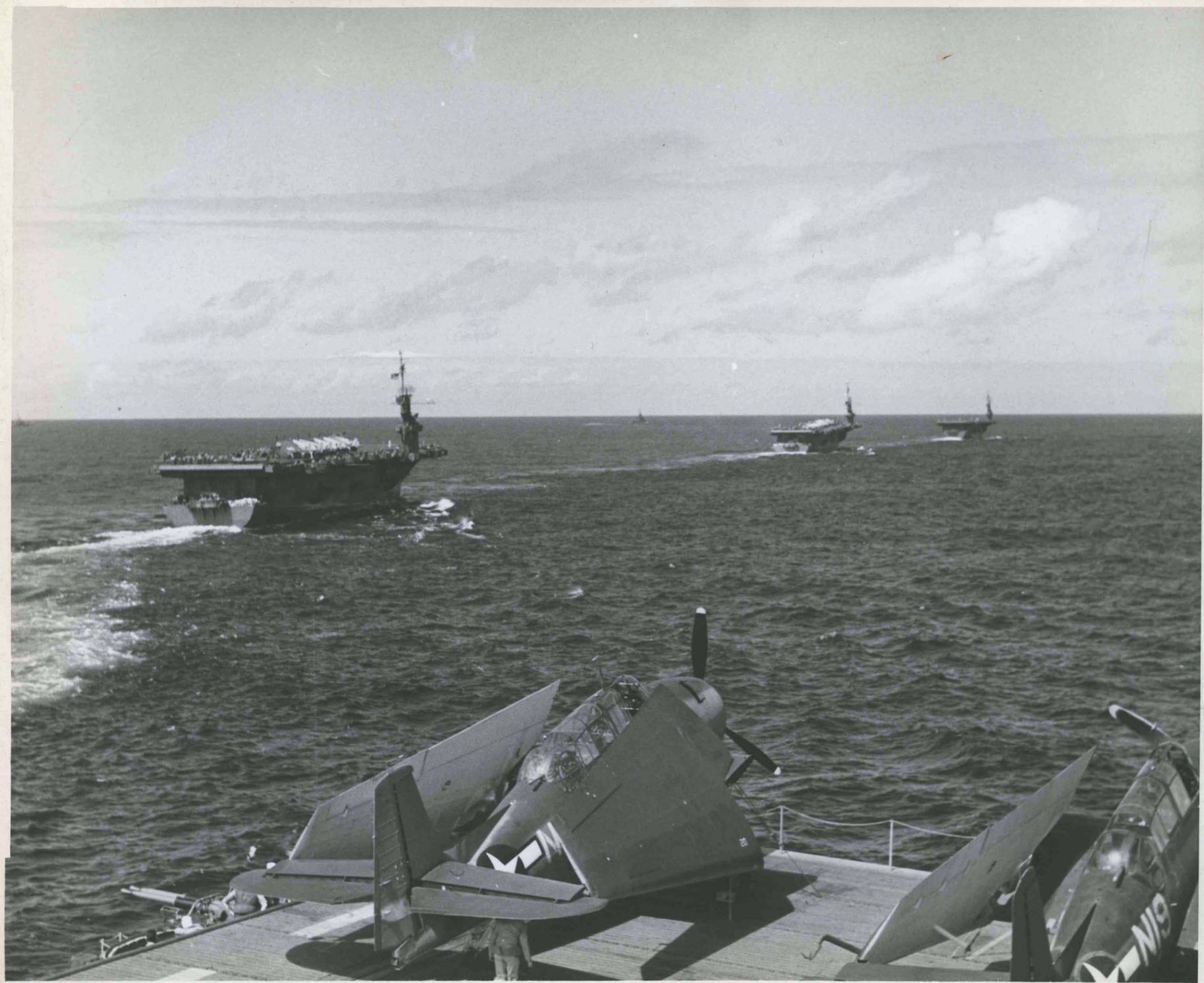
~~CONFIDENTIAL~~



Information with CVEs 61, 57, and 58

13 January 1944

~~CONFIDENTIAL~~



Escorting Convoy

~~CONFIDENTIAL~~



Escorting Convoy

~~CONFIDENTIAL~~



Transferring pilot - rescued by DD-349 after water crash
26 January 1944

~~CONFIDENTIAL~~



FM-1 hitting water after crashing into island
LT(jg) BECKER VC-63 — 7 February 1944

~~CONFIDENTIAL~~



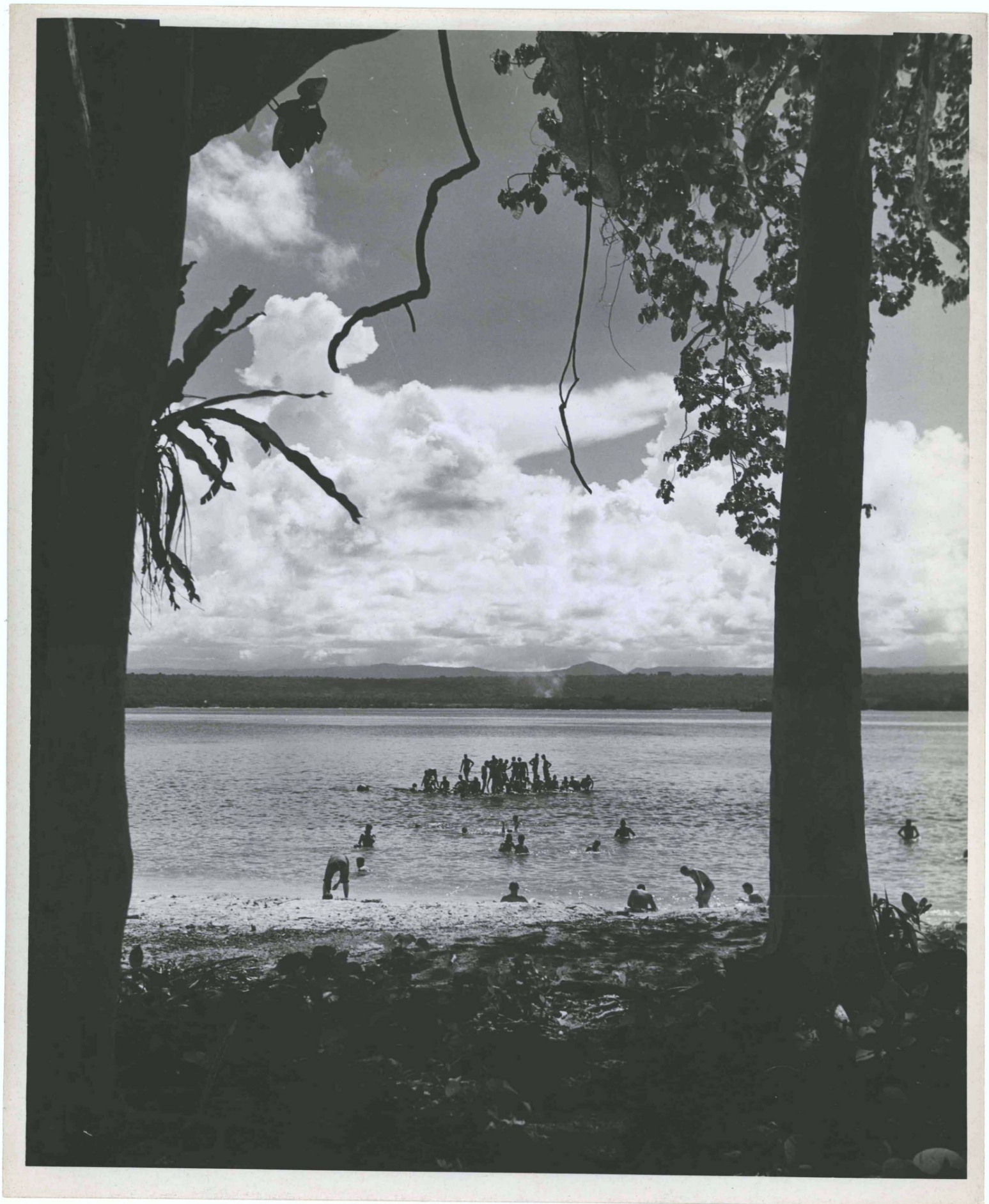
TBMs from CVE-62 over WOTJE (in Jap hands)
9 February 1944

~~CONFIDENTIAL~~



Recreation Party - Espirito Santo
14 March 1944

~~CONFIDENTIAL~~



Green Island - AIT. 1500'

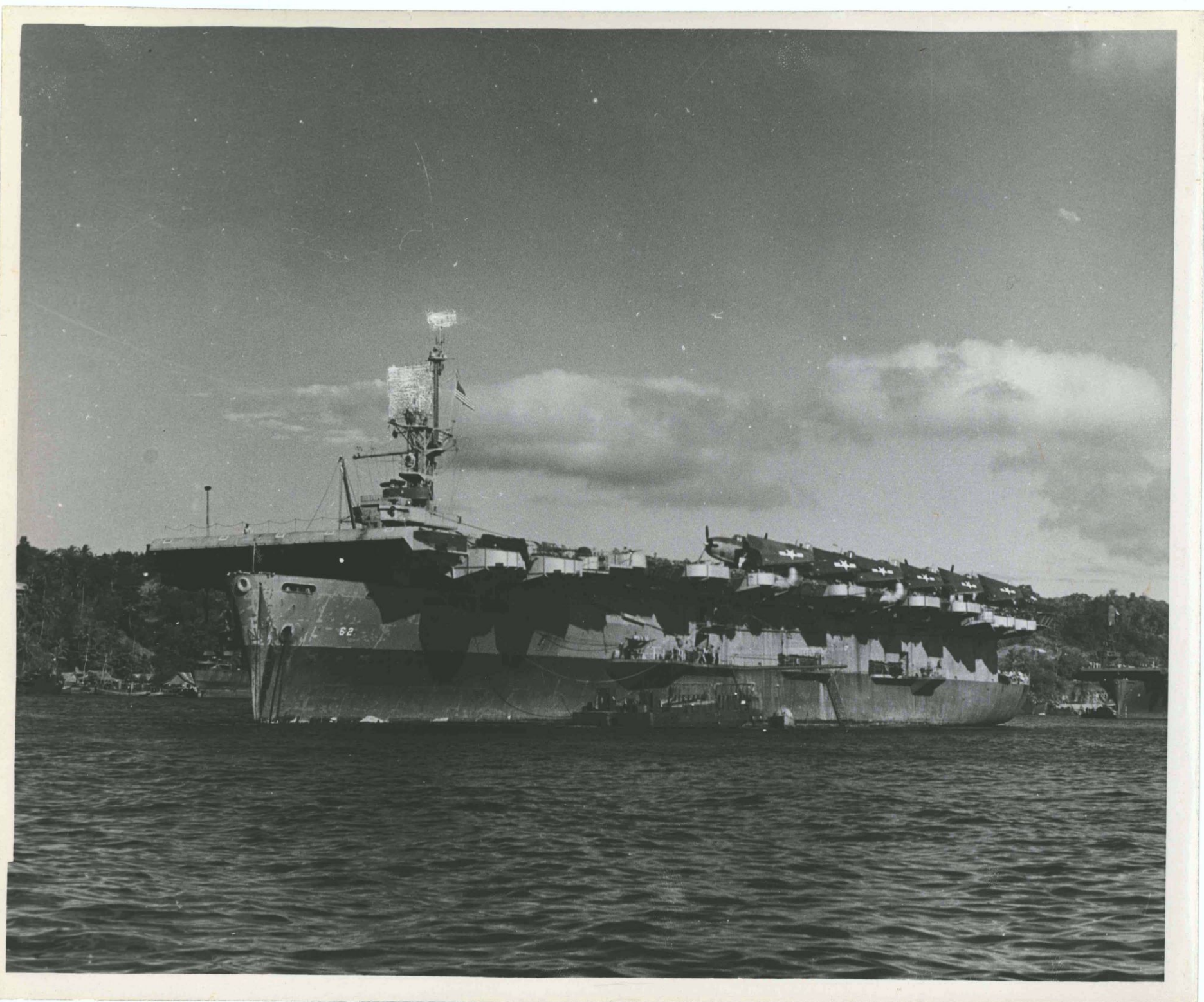
2 April 1944

~~CONFIDENTIAL~~



Anchored in Tulagi Harbor
8 April 1944

~~CONFIDENTIAL~~



Captain H. L. MEADOW being relieved
by Captain A. W. MOREHOUSE
7 August 1944

~~CONFIDENTIAL~~



Pollywog Initiation - 4 October 1948

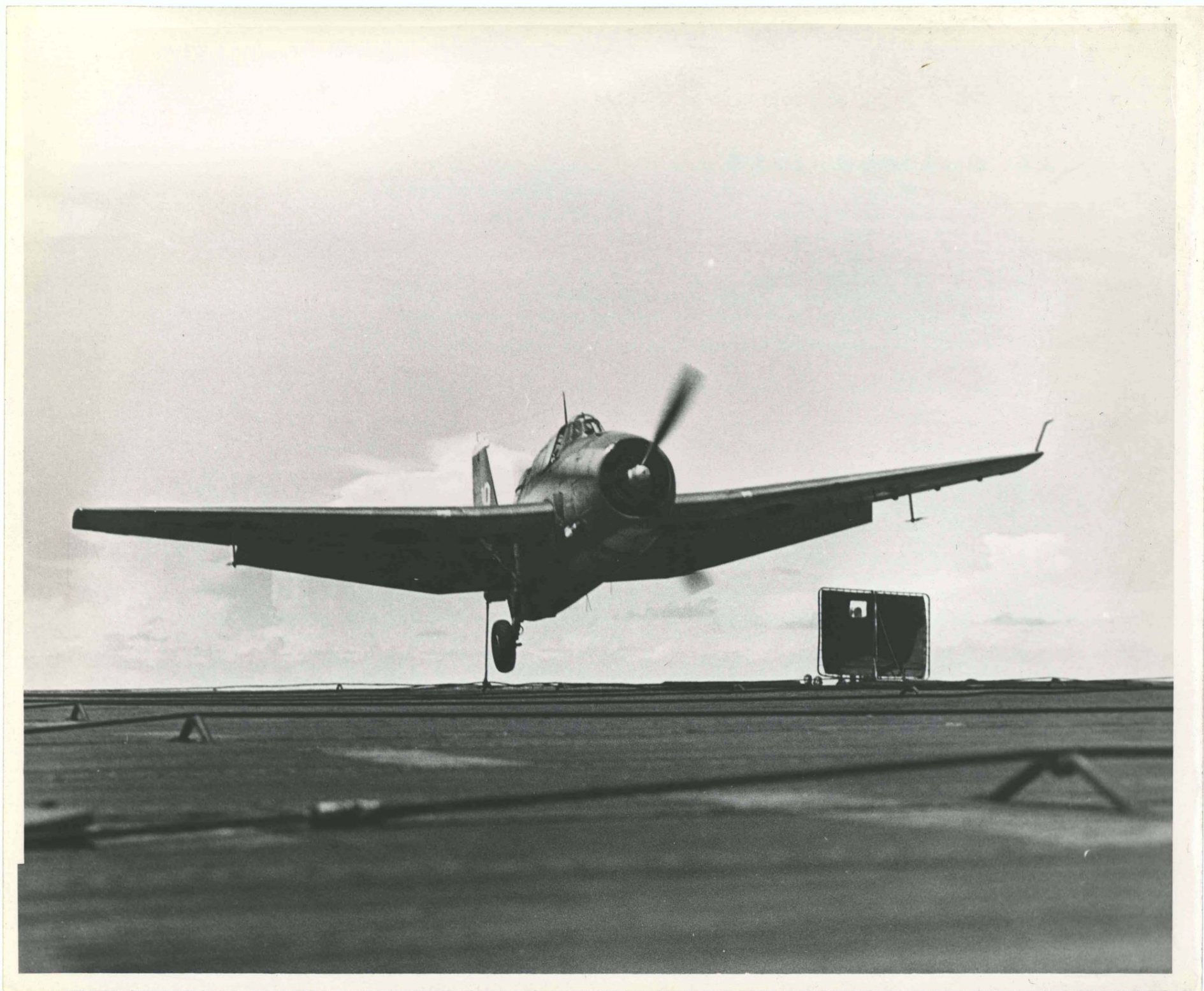
~~CONFIDENTIAL~~



T.B.M. making one-wheel landing -

26 October 1944

~~CONFIDENTIAL~~



Refueling DE-442 - Franklin D. ROOSEVELT Jr. SKIPPER

~~CONFIDENTIAL~~



Rear Admiral FELIX B. STUMP

3 February 1945

~~CONFIDENTIAL~~



Change of Command

Captain A.K. MOREHOUSE and Captain B.B. NICHOL

1 March 1945

~~CONFIDENTIAL~~



Anchored in Kerama Retto off Okinawa
1 April 1945

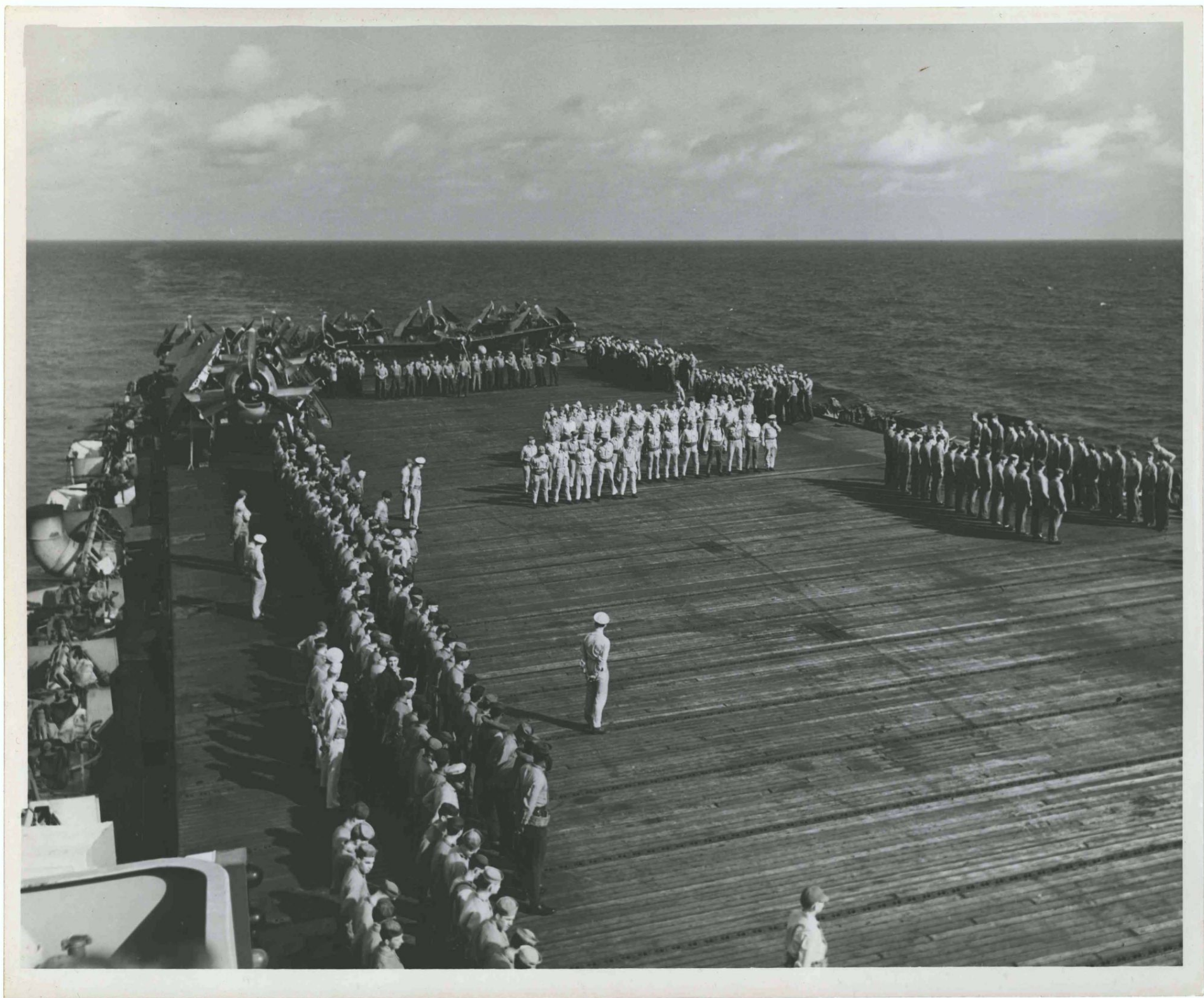
~~CONFIDENTIAL~~



Quarters for muster

18 April 1945

~~CONFIDENTIAL~~



Lieut. R.C. VON ROSENBURG receiving letter
of commendation from Capt. B.B. NICHOL
23 April 1945

~~CONFIDENTIAL~~



Appendicitis Operation
23 April 1945

~~CONFIDENTIAL~~



U.S.M.C. Band - Guam
24 April 1945

~~CONFIDENTIAL~~



Leaving Apra Harbor, Guam
4 May 1945

~~CONFIDENTIAL~~



Rear Admiral Henderson
6 May 1945

~~CONFIDENTIAL~~



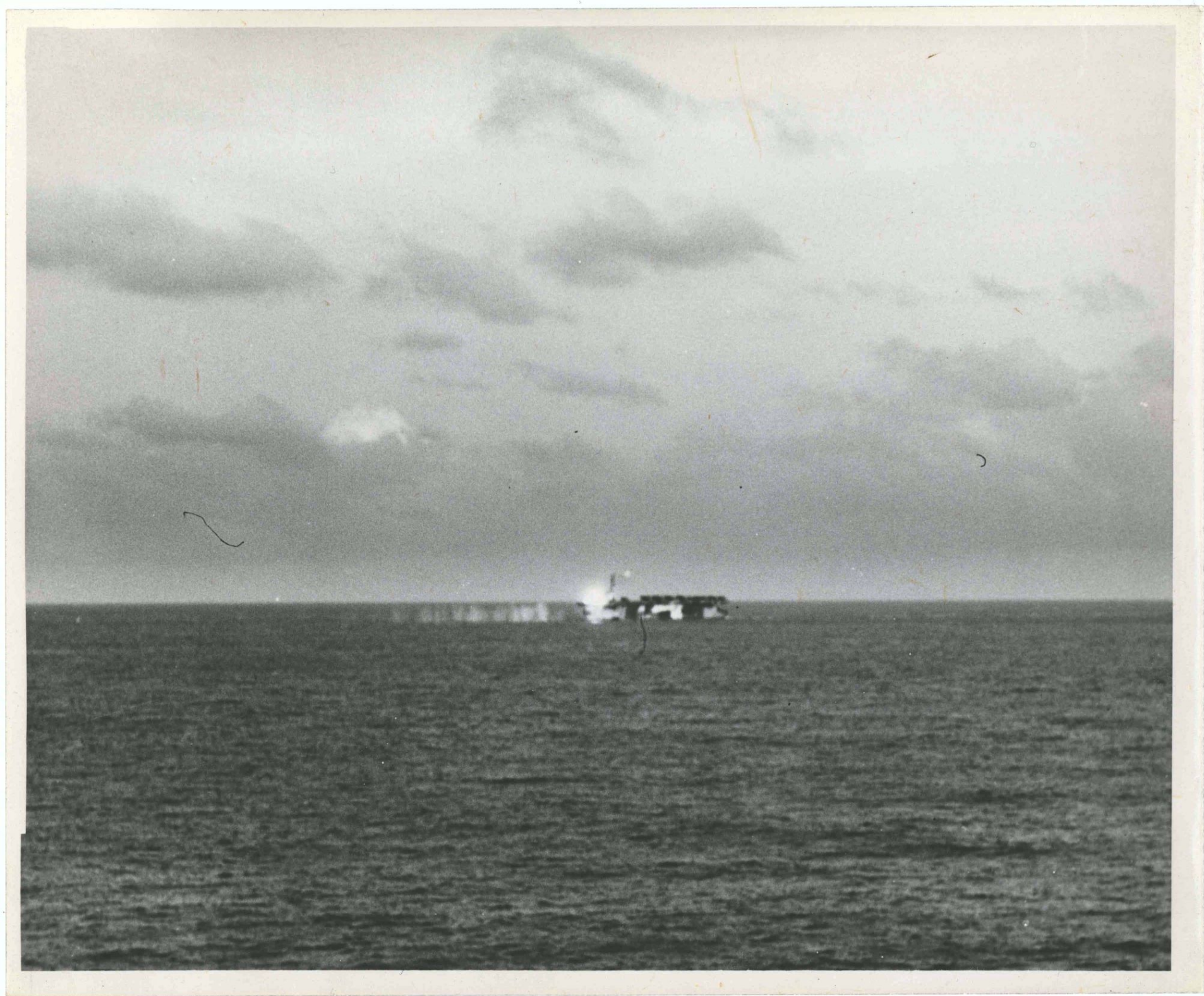
Silhouette of D.E. (Longhull)
AIT. 1000' - 9 MAY 1945

~~CONFIDENTIAL~~



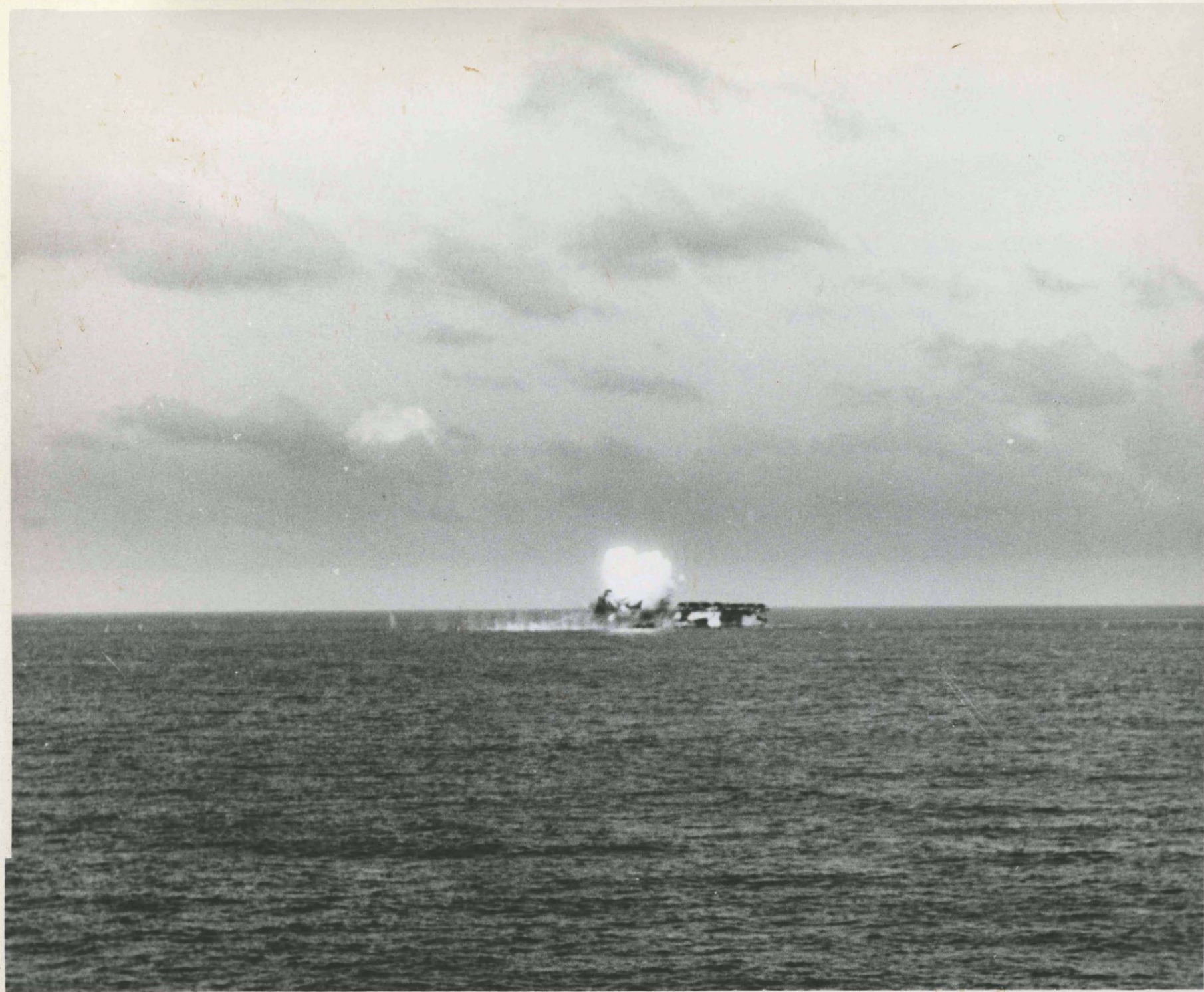
CVE-62 hit by Kamakaze of A Sakishiwa
(picture by SARGENT BAY (CVE-83))
7 June 1945

~~CONFIDENTIAL~~



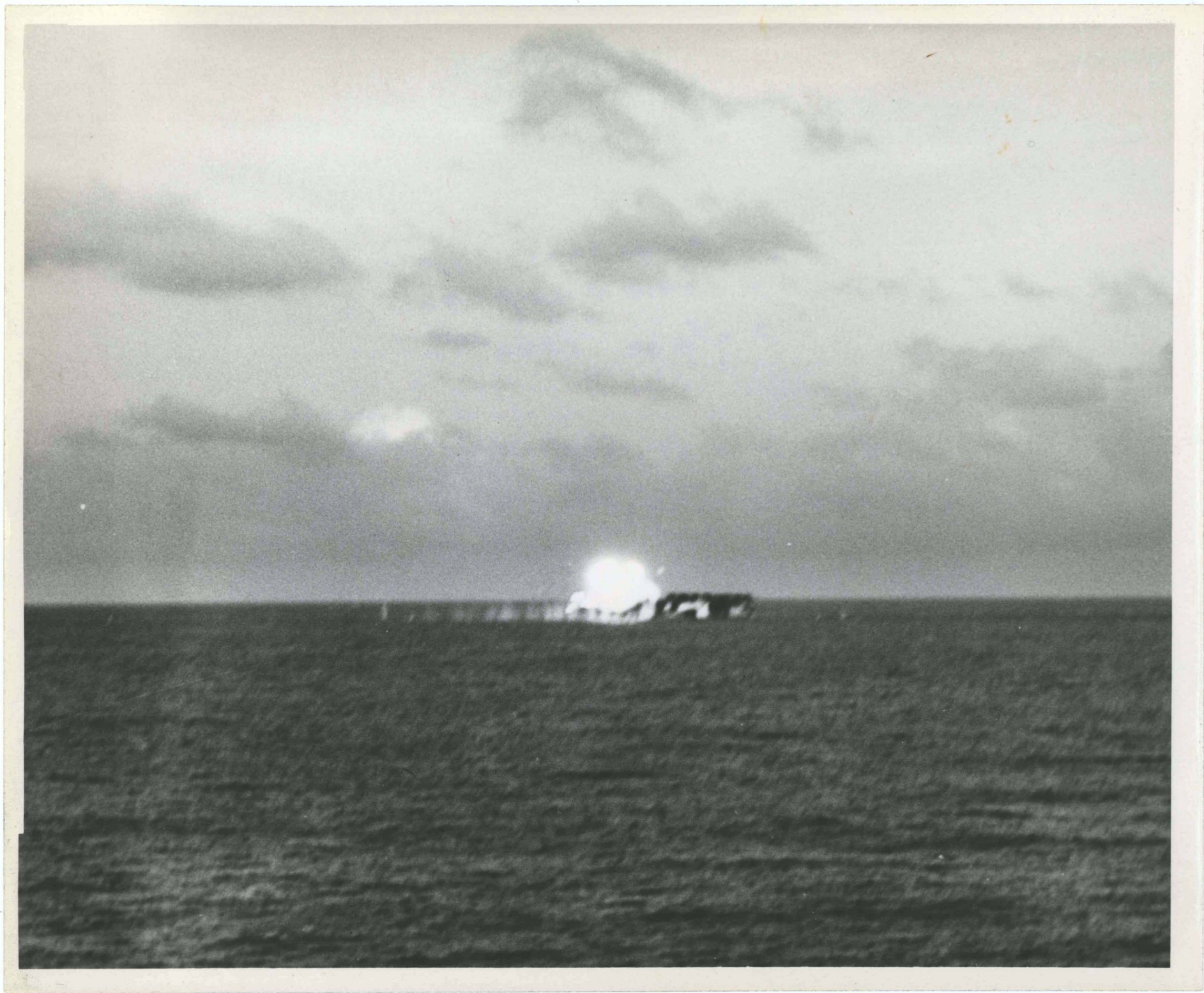
CVE-62 hit by Kamakaze - off Sakashima
picture by SARGENT BAY (CVE-83)
7 June 1945

~~CONFIDENTIAL~~



CVE-62 hit by Kamakaze - off Sakashima
picture by SARGENT BAY (CVE-83)
7 June 1945

~~CONFIDENTIAL~~



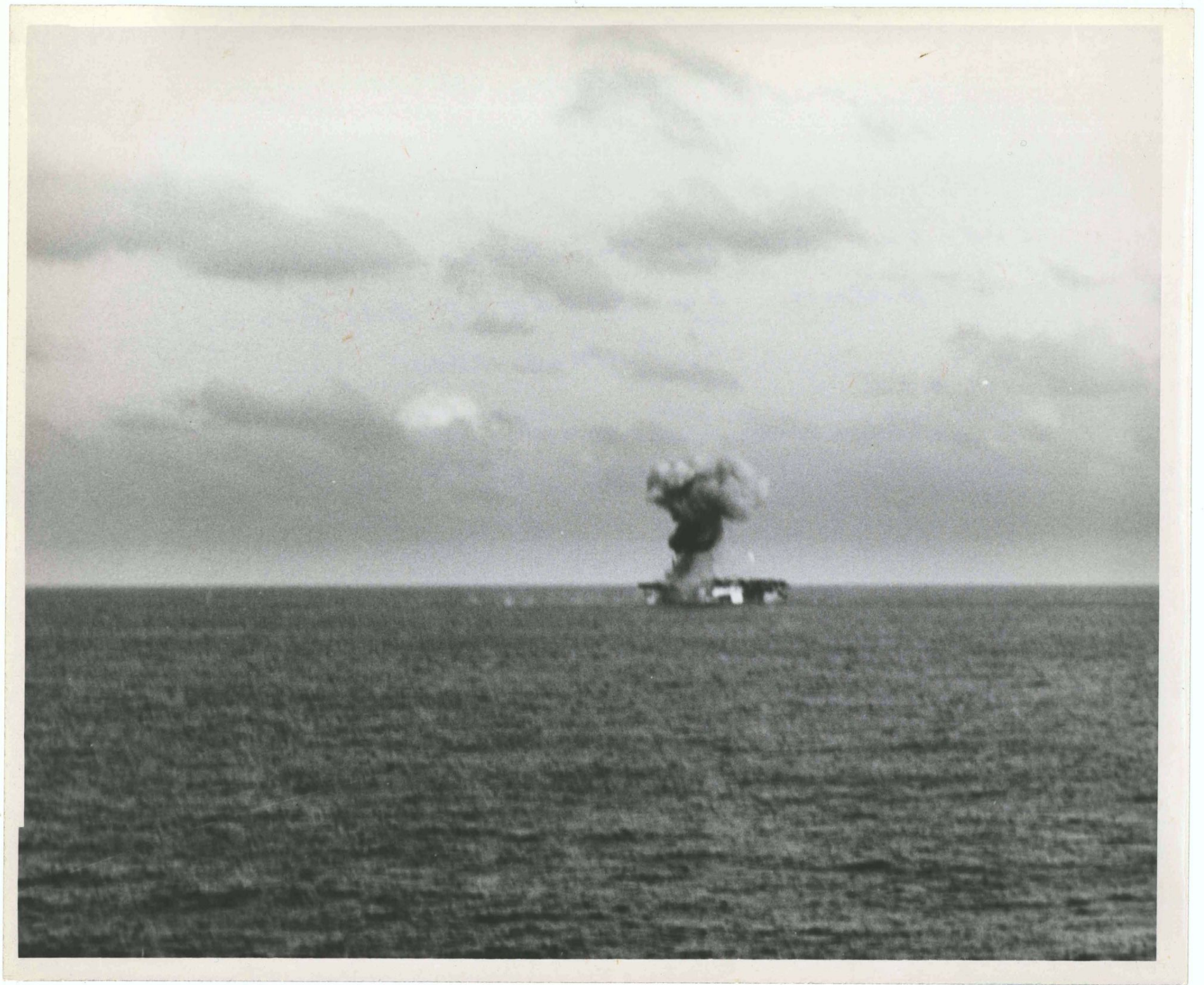
CVF-62 hit by Kamakaze - off Sakashima
picture by SARGENT BAY (CVF-83)
7 June 1945

~~CONFIDENTIAL~~



CVE-62 hit by Kamakaze - off Satashima
picture by SARGENT BAY (CVE-62)
7 June 1945

~~CONFIDENTIAL~~



CVI-62 hit by kamakaze - off Satashima
picture by SARGENT BAY (CVE-83)
7 June 1945

~~CONFIDENTIAL~~



U.S.S. NATOMA BAY

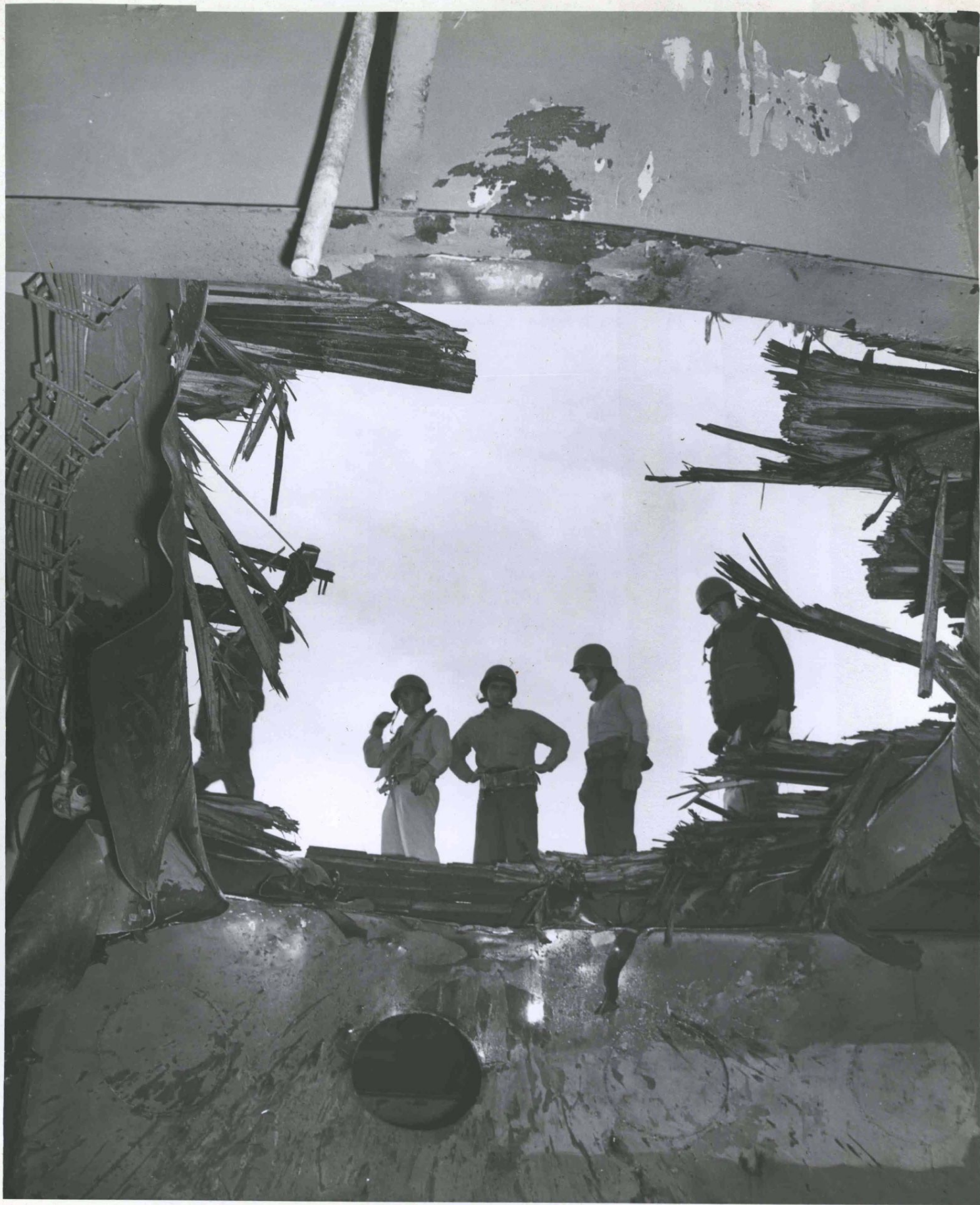
FM-2 on FIRE - CAUSED by Jap suicide plane
JUNE 7th - SAKISHIMA

~~CONFIDENTIAL~~



Damage to anchor windlass caused
by Kamataze - 7 June 1945

~~CONFIDENTIAL~~



Damage to anchor windlass caused
by Kamakaze - off Sakashima
7 June 1945

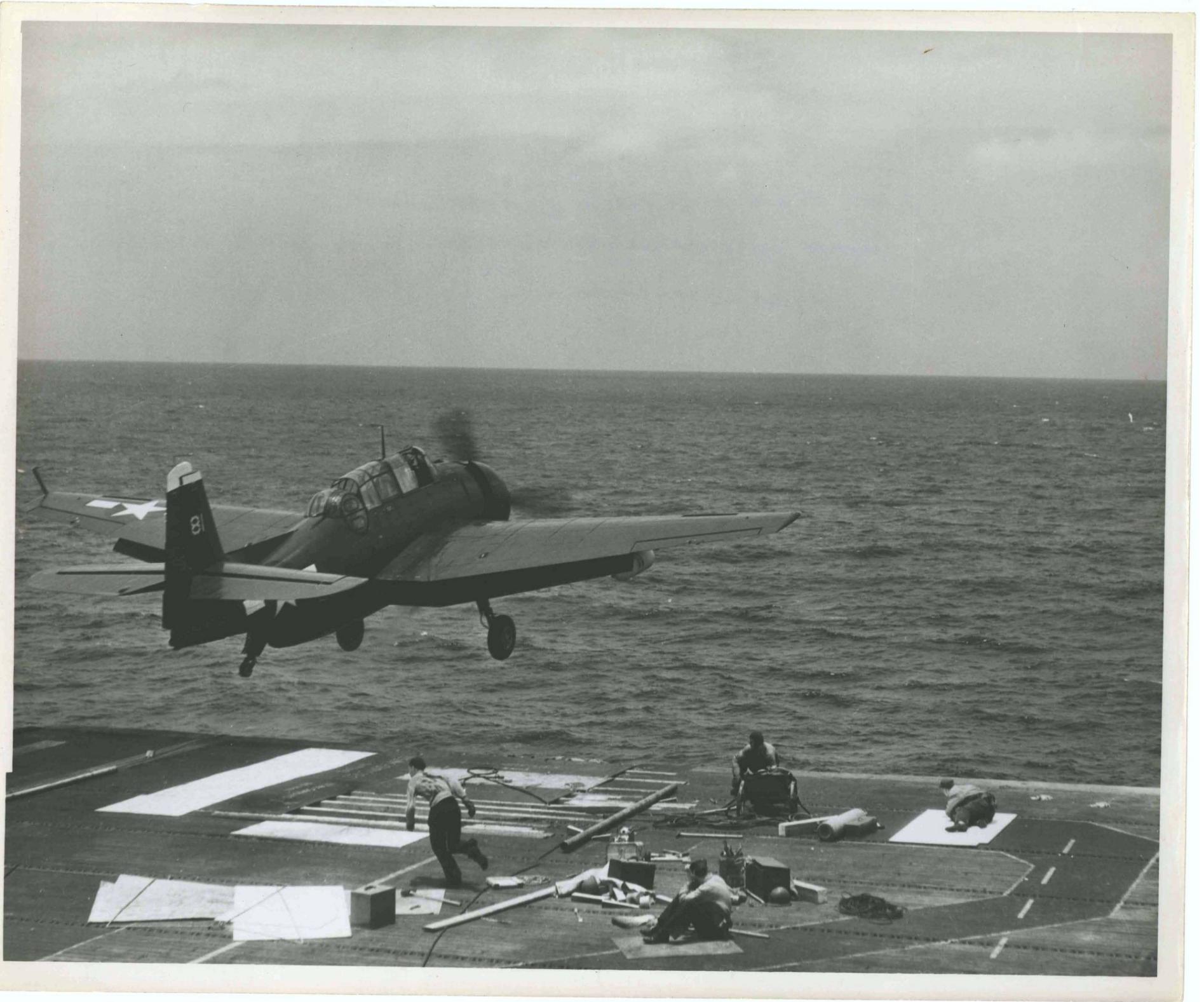
~~CONFIDENTIAL~~



U.S.S. NATOMA BAY

FIRST FLIGHT AFTER REPAIRS ON FLIGHT DECK -
DAMAGE WAS CAUSED BY KAMEKAZE: JUNE 7-'45
OF SAKASHIMA — 0

~~CONFIDENTIAL~~



Cut water.

~~CONFIDENTIAL~~



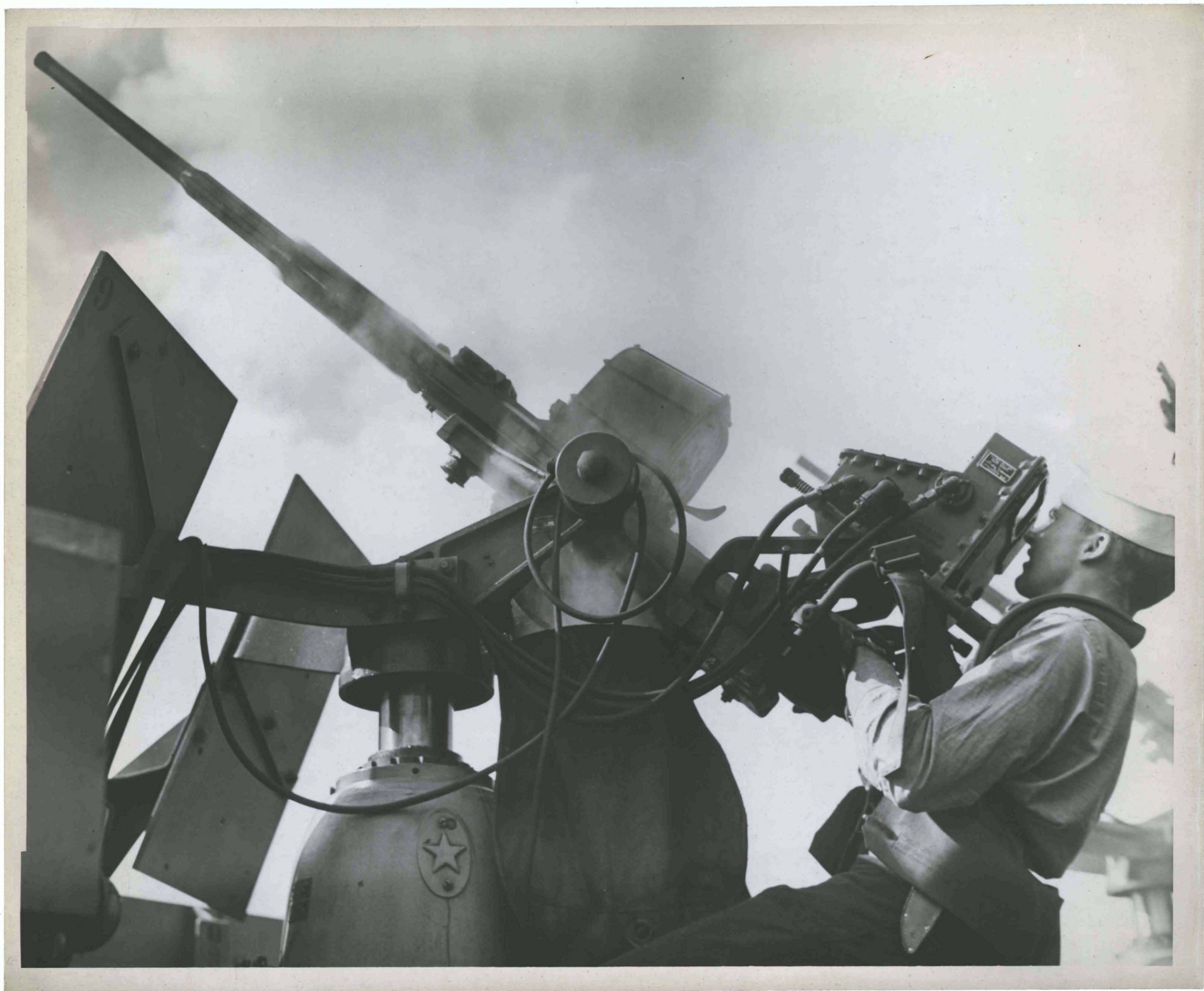
Fueling at sea.

~~CONFIDENTIAL~~



Target Practice - 20 m m.

~~CONFIDENTIAL~~



Target Practice - 40 m.m.

~~CONFIDENTIAL~~



mechs. at work

~~CONFIDENTIAL~~



Oblique from 900'

9 May 1945

~~CONFIDENTIAL~~

