

SHOCK OF THE INITIAL DETONATIONS CAUSED PLANES ON THE FLIGHT DECK TO BOUNCE AROUND, PROPELLERS WHIRLING AND CUTTING INTO OTHER AIRCRAFT. MOST OF THE 18 TINY TFM ROCKETS ON THE FLIGHT DECK WERE HIT.

DETONATION OF BOMB (BOMB) HOLED HANGAR AND SECOND DECK. THIRD DECK PUNCTURED BY FRAGMENTS.

DETONATION OF SHIP'S BOMBS (PRESUMEDLY TINY TFM ROCKETS) HOLED HANGAR AND SECOND DECK. FRAGMENTS PENETRATED THIRD DECK, FOURTH DECK DEBRIS BETWEEN FRAMES 145-148.

HOLES IN HANGAR AND SECOND DECK CAUSED BY DETONATION OF SHIP'S BOMBS (PRESUMEDLY TINY TFM ROCKETS).

HOLE APPROXIMATELY 6' IN DIAMETER BLOWN IN ARMORED DECK (L-324), AS A RESULT OF DETONATION AT 7:55. LIGHT BURSTING ON SECOND DECK IN WAY OF BOMB OFFICE, FRAMES 145-148 BLOWN OUT AND DISTORTED BY BOMB.

IMMEDIATELY FOLLOWING THE INITIAL DETONATION(S) DENSE SMOKE ENTERED ALL HIGHWAY SPACES THROUGH VENTILATION DUCTS.

MANY BOMBS AND ENTIRE PLANES FELL THROUGH OPENINGS IN FLIGHT DECK INTO HANGAR WHERE THE BOMBS SUBSEQUENTLY DETONATED. SOME PLANES WERE BLOWN CLEAR OF THE FLIGHT DECK.

PROBABLY CAUSED BY GREAT BOMB DETONATION.

DECK EDGE ELEVATOR INOPERATIVE.

PORT CATAPULT TRACK TWISTED. ELEVATOR LIFTED OUT OF PLACE AND PLUNGERS POLLED OUT OF THE 10 CLOUTERS. PLATFORM UPON DROPPING ASSUMED A SLOTTED POSITION OF ABOUT 45° TO THE DECK. STARBOARD PLUNGER PUNCTURED HOLES IN DECK BELOW TO THE FOURTH DECK.

FLIGHT DECK VIRTUALLY DEMOLISHED AFT OF THE AFTER ELEVATOR AND EXTENSIVELY DAMAGED FORWARD TO FRAME 175. FORWARD STAYAGE ON WOOD OPENING WAS CHAINED AND DECK PLATING WAS WARPED AND BUCKLED.

BOMBS AND DECKS WARPED.

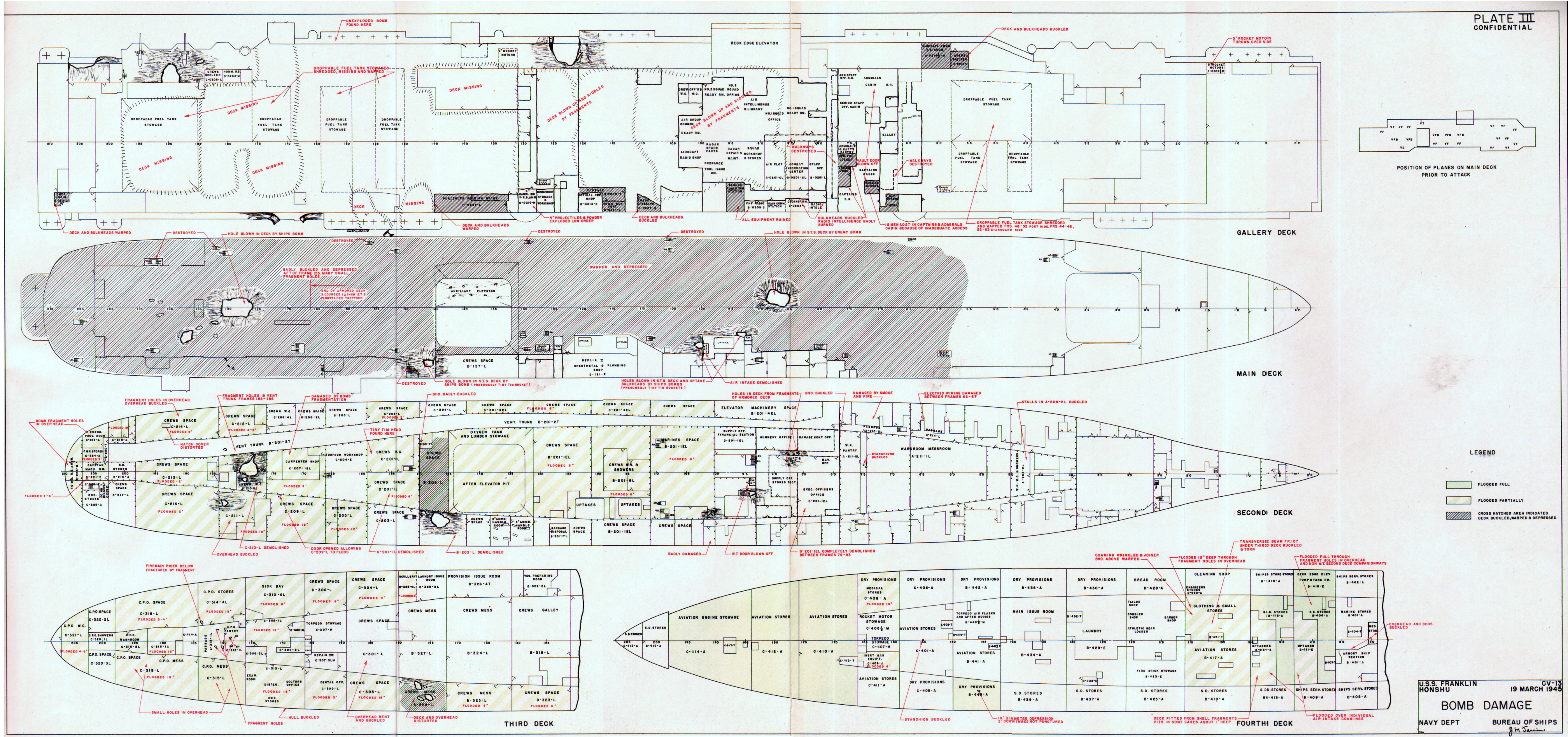
DECK WARPED, VENTILATION SYSTEM DESTROYED.

BOMB ELEVATOR DEMOLISHED BELOW.

DECK AND OVERHEAD WARPED.

VENTILATION AND ELECTRICAL SYSTEMS DESTROYED.

FLIGHT DECK



U.S.S. FRANKLIN HONSHU CV-13
19 MARCH 1945
BOMB DAMAGE
NAVY DEPT BUREAU OF SHIPS
8/13/45