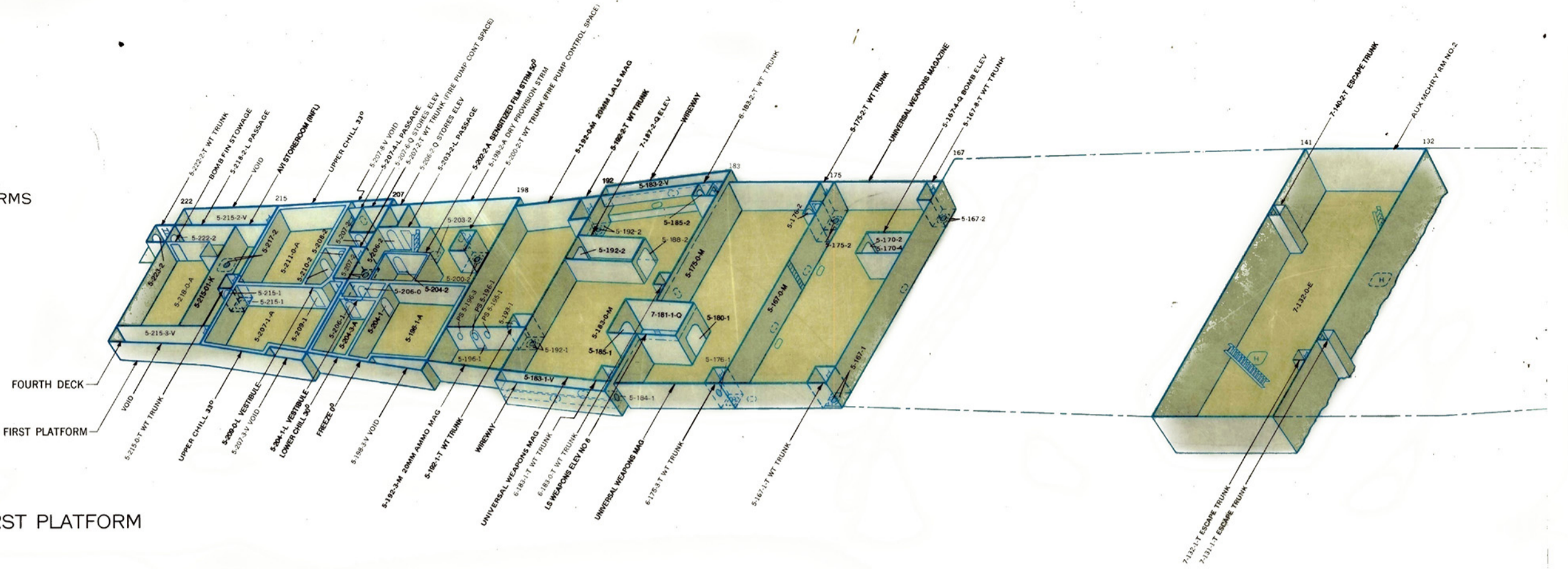
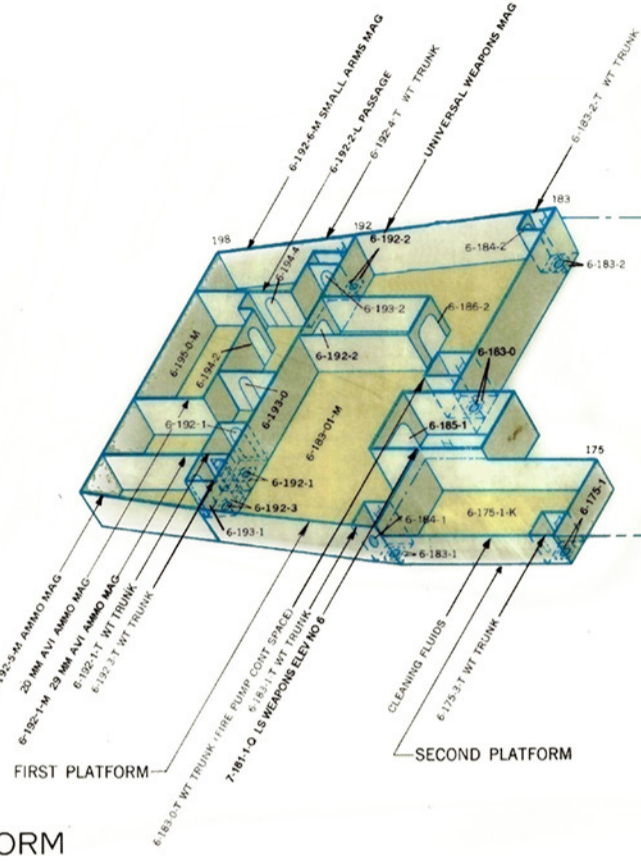


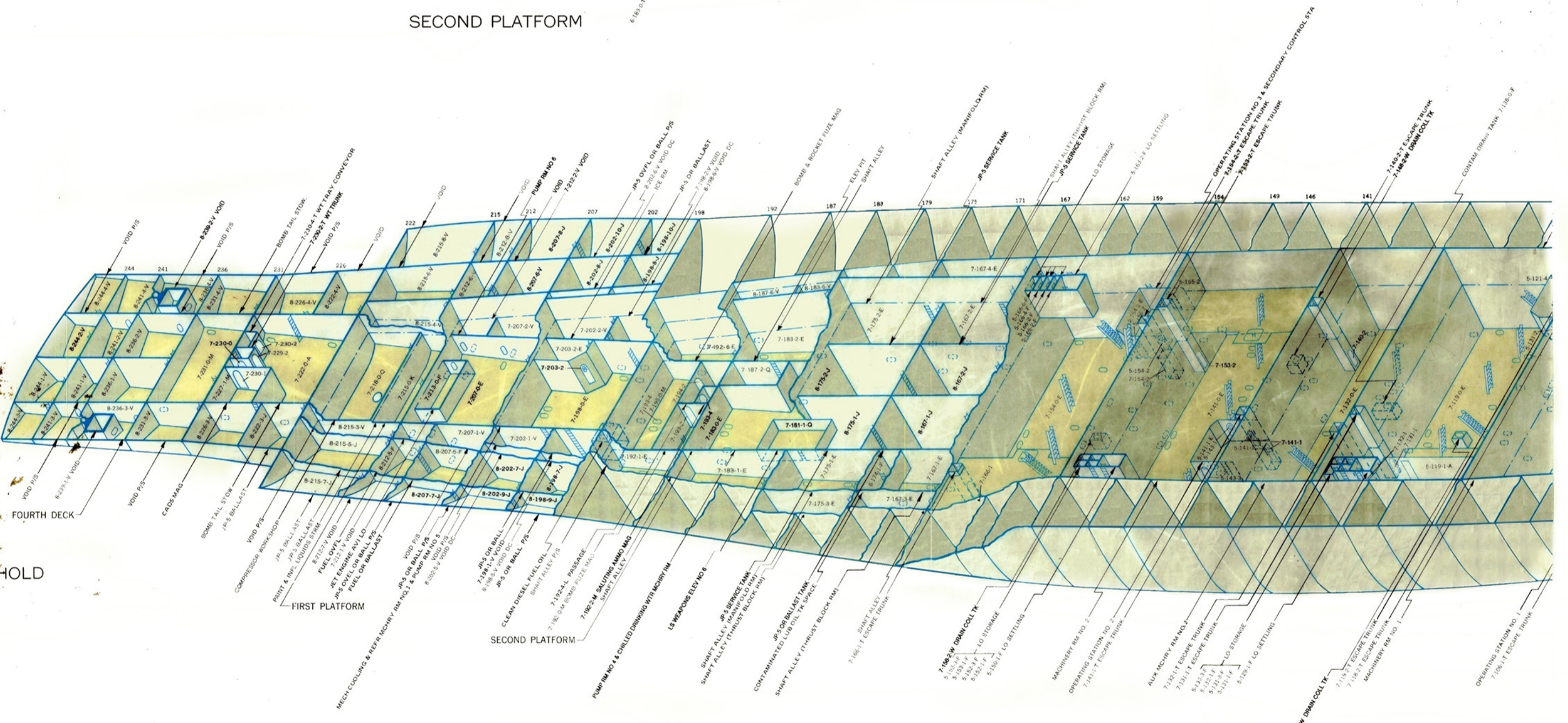
SUBDIVISION  
DOUBLE BOTTOM, HOLD,  
SECOND AND FIRST PLATFORMS  
AND WING TANKS



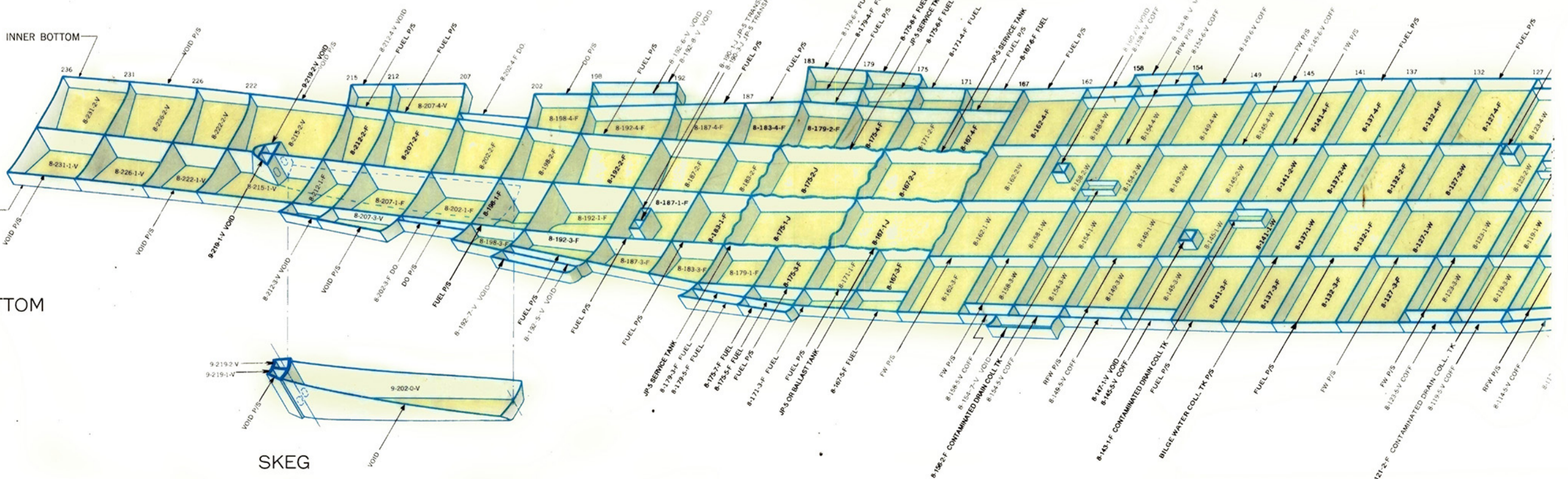
FIRST PLATFORM



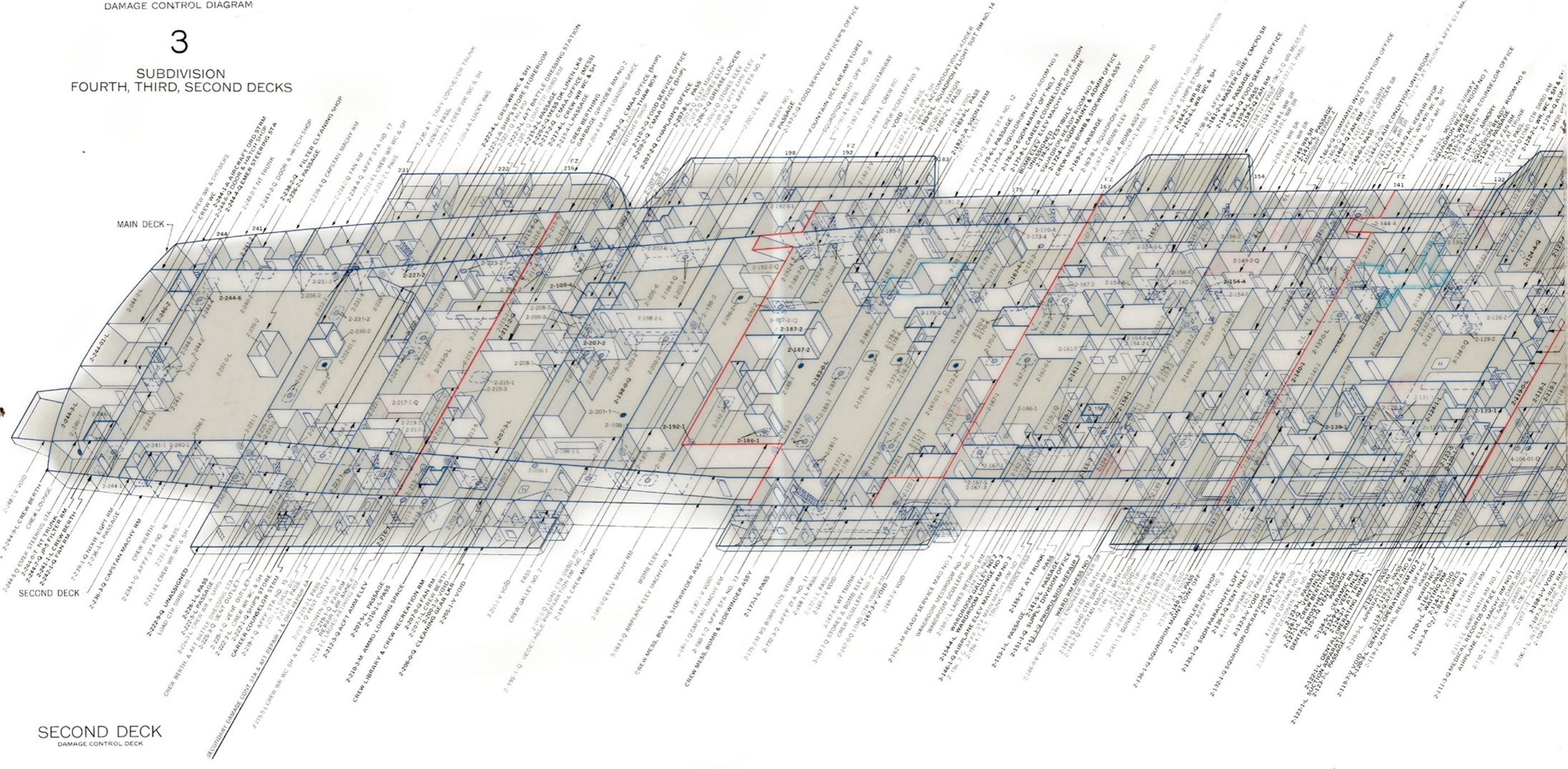
SECOND PLATFORM



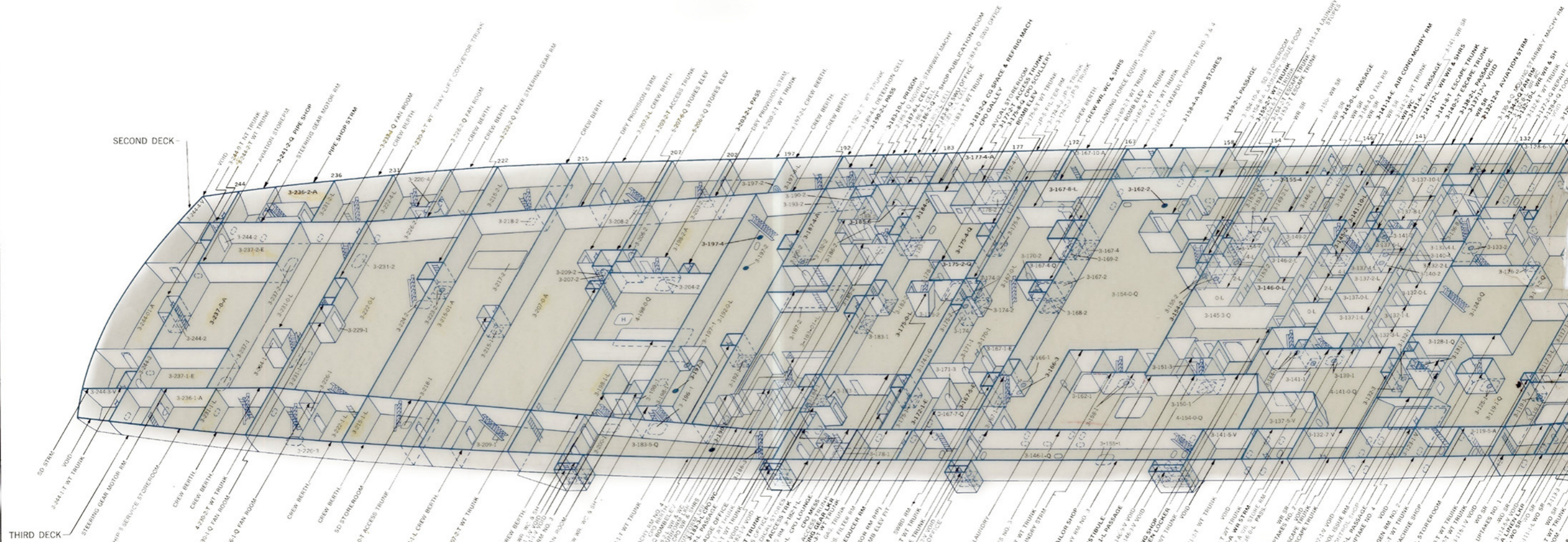
DOUBLE BOTTOM



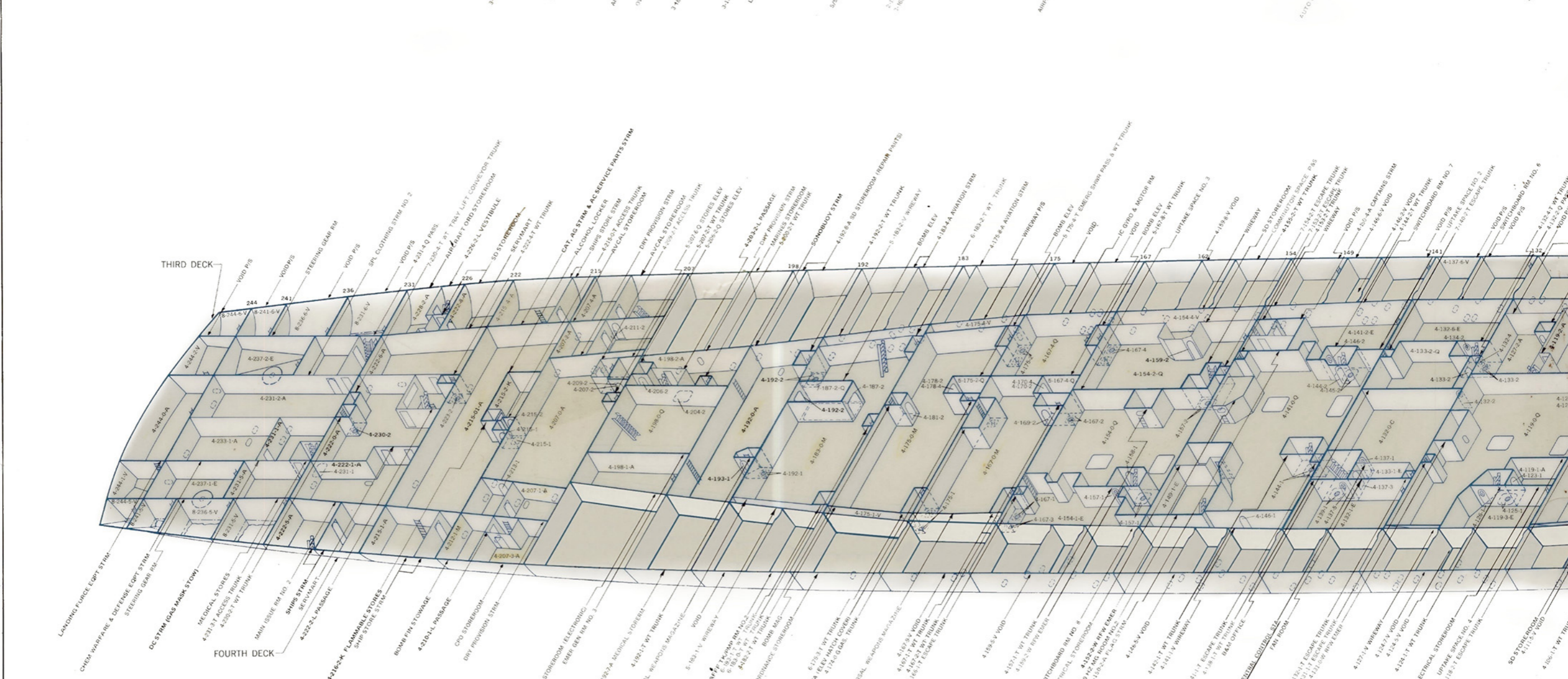
SKEG



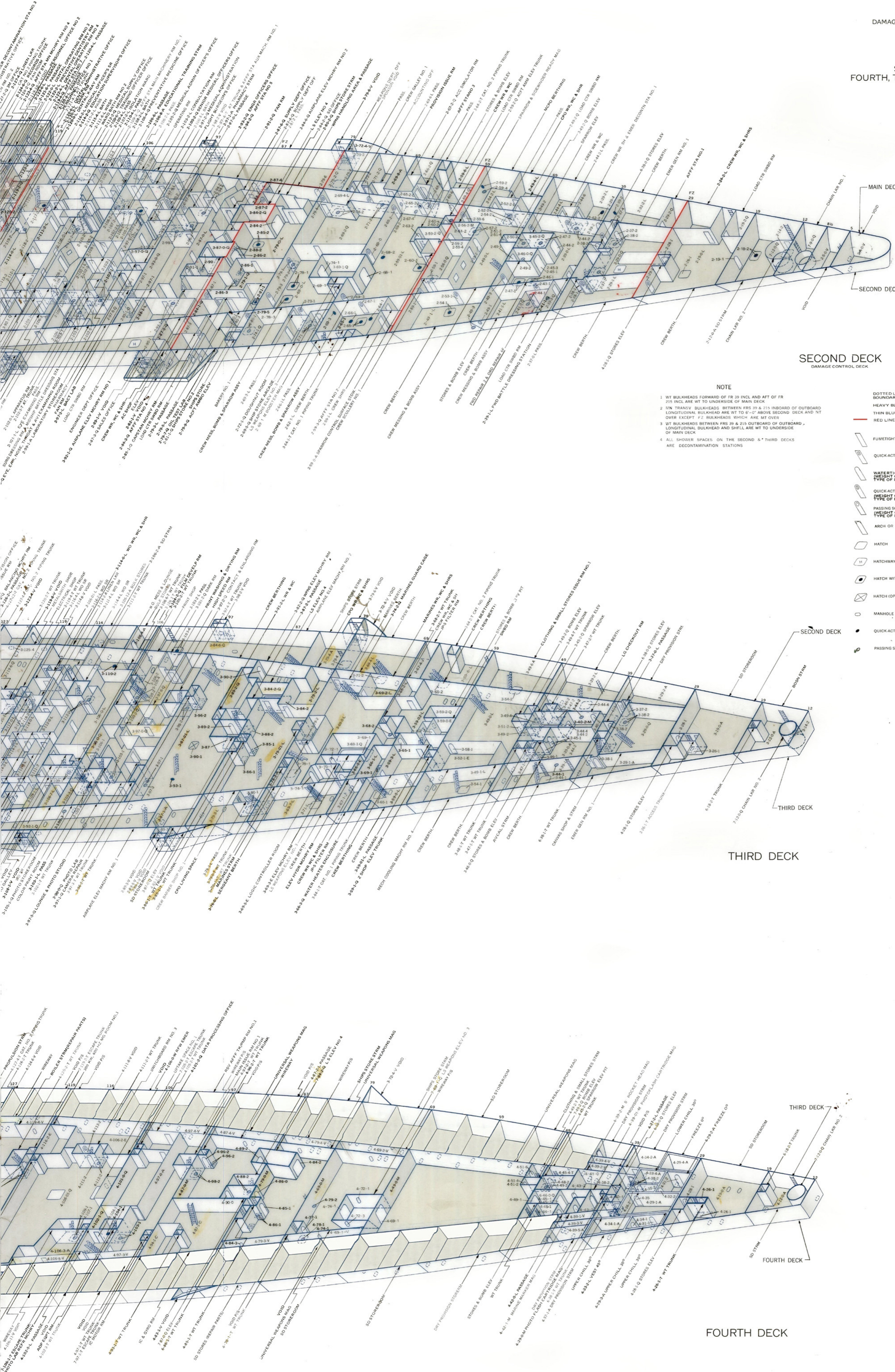
SECOND DECK  
DAMAGE CONTROL DECK



THIRD DECK  
DAMAGE CONTROL DECK



FOURTH DECK  
DAMAGE CONTROL DECK



SECOND DECK DAMAGE CONTROL DECK

KEY

- 1 WT BULKHEADS FORWARD OF FR 39 INCL AND AFT OF FR 215 INCL ARE WT TO UNDERSIDE OF MAIN DECK
  - 2 ON TRANSVERSE BULKHEADS BETWEEN FR 39 & 215 INBOARD OF OUTBOARD LONGITUDINAL BULKHEAD ARE WT TO 6'-0" ABOVE SECOND DECK AND NOT OVER EXCEPT FZ BULKHEADS WHICH ARE WT OVER
  - 3 WT BULKHEADS BETWEEN FR 39 & 215 OUTBOARD OF OUTBOARD LONGITUDINAL BULKHEAD AND SHELL ARE WT TO UNDERSIDE OF MAIN DECK
  - 4 ALL SHOWER SPACES ON THE SECOND & THIRD DECKS ARE DECONTAMINATION STATIONS
- DOTTED LINES AND CROSS-HATCHING INDICATE BOUNDARIES AND FITTINGS HIDDEN FROM VIEW
  - HEAVY BLUE LINE INDICATES WT. OR D.T. BOUNDARIES
  - THIN BLUE LINE INDICATES A.T. OR N.T. BOUNDARIES
  - RED LINE INDICATES FIRE ZONE BULKHEAD
  - FUMETIGHT, FLAMETIGHT OR NON-TIGHT DOOR
  - QUICKACTING FUMETIGHT, FLAMETIGHT OR NON-TIGHT DOOR
  - WATER/TIGHT OR AIR/TIGHT DOOR (WEIGHT OF BULKHEAD LINE INDICATES TYPE OF DOOR)
  - QUICKACTING WATER/TIGHT OR AIR/TIGHT DOOR (WEIGHT OF BULKHEAD LINE INDICATES TYPE OF DOOR)
  - PASSING SCUTTLE IN WATER/TIGHT OR AIR/TIGHT DOOR (WEIGHT OF BULKHEAD LINE INDICATES TYPE OF DOOR)
  - ARCH OR OPENING
  - HATCH
  - HATCHWAY
  - HATCH WITH SCUTTLE
  - HATCH (OPERABLE FROM ABOVE AND BELOW)
  - MANHOLE
  - QUICKACTING SCUTTLE
  - PASSING SCUTTLE (P.S.)

NOTE

- 1 WT BULKHEADS FORWARD OF FR 39 INCL AND AFT OF FR 215 INCL ARE WT TO UNDERSIDE OF MAIN DECK
- 2 ON TRANSVERSE BULKHEADS BETWEEN FR 39 & 215 INBOARD OF OUTBOARD LONGITUDINAL BULKHEAD ARE WT TO 6'-0" ABOVE SECOND DECK AND NOT OVER EXCEPT FZ BULKHEADS WHICH ARE WT OVER
- 3 WT BULKHEADS BETWEEN FR 39 & 215 OUTBOARD OF OUTBOARD LONGITUDINAL BULKHEAD AND SHELL ARE WT TO UNDERSIDE OF MAIN DECK
- 4 ALL SHOWER SPACES ON THE SECOND & THIRD DECKS ARE DECONTAMINATION STATIONS

THIRD DECK

FOURTH DECK



PREPARED BY NEW YORK NAVAL SHIPYARD FOR BUREAU OF SHIPS MARCH 1956

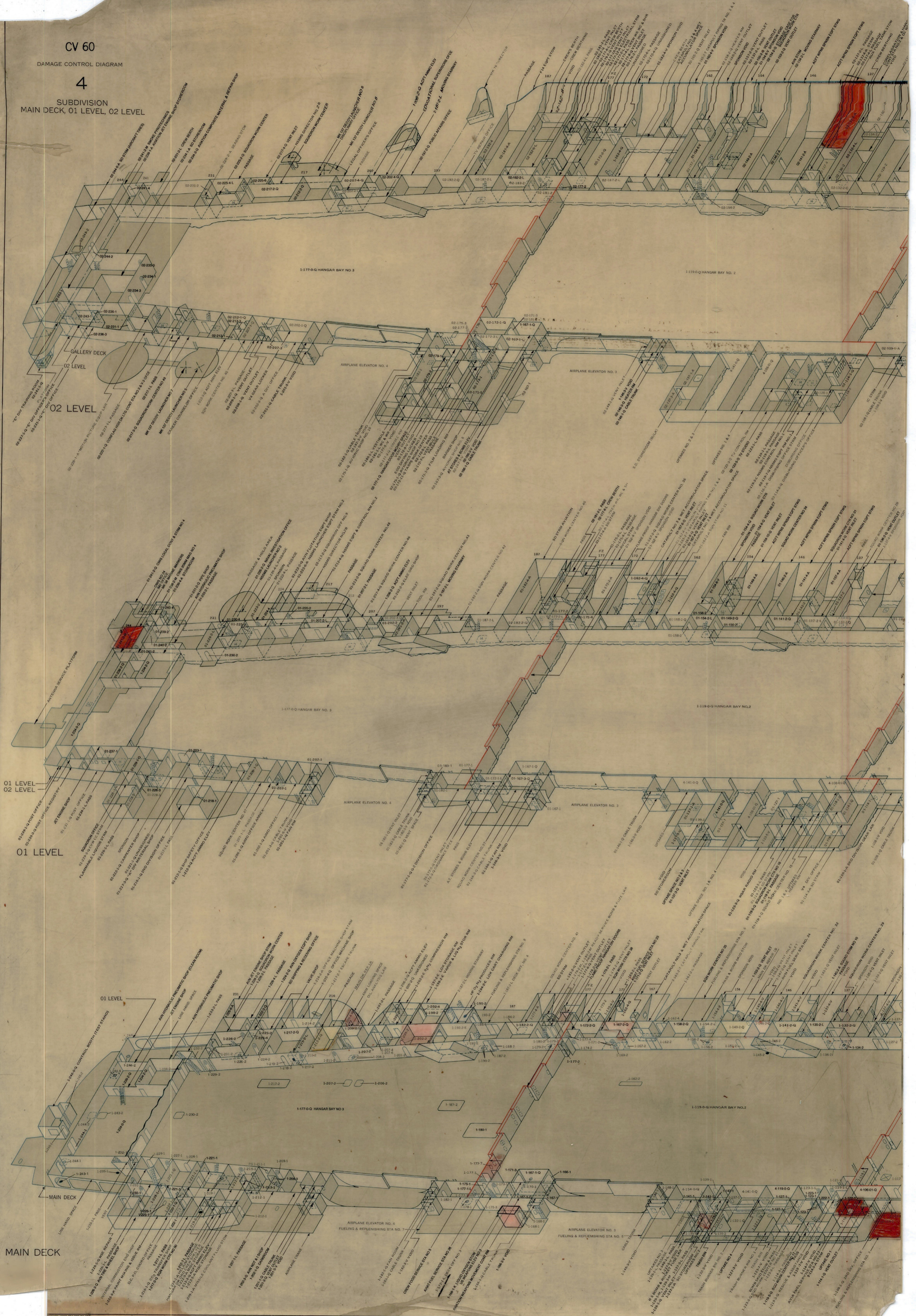
CORRECT LITHOGRAPHIC COPIES FOR REVISIONS.

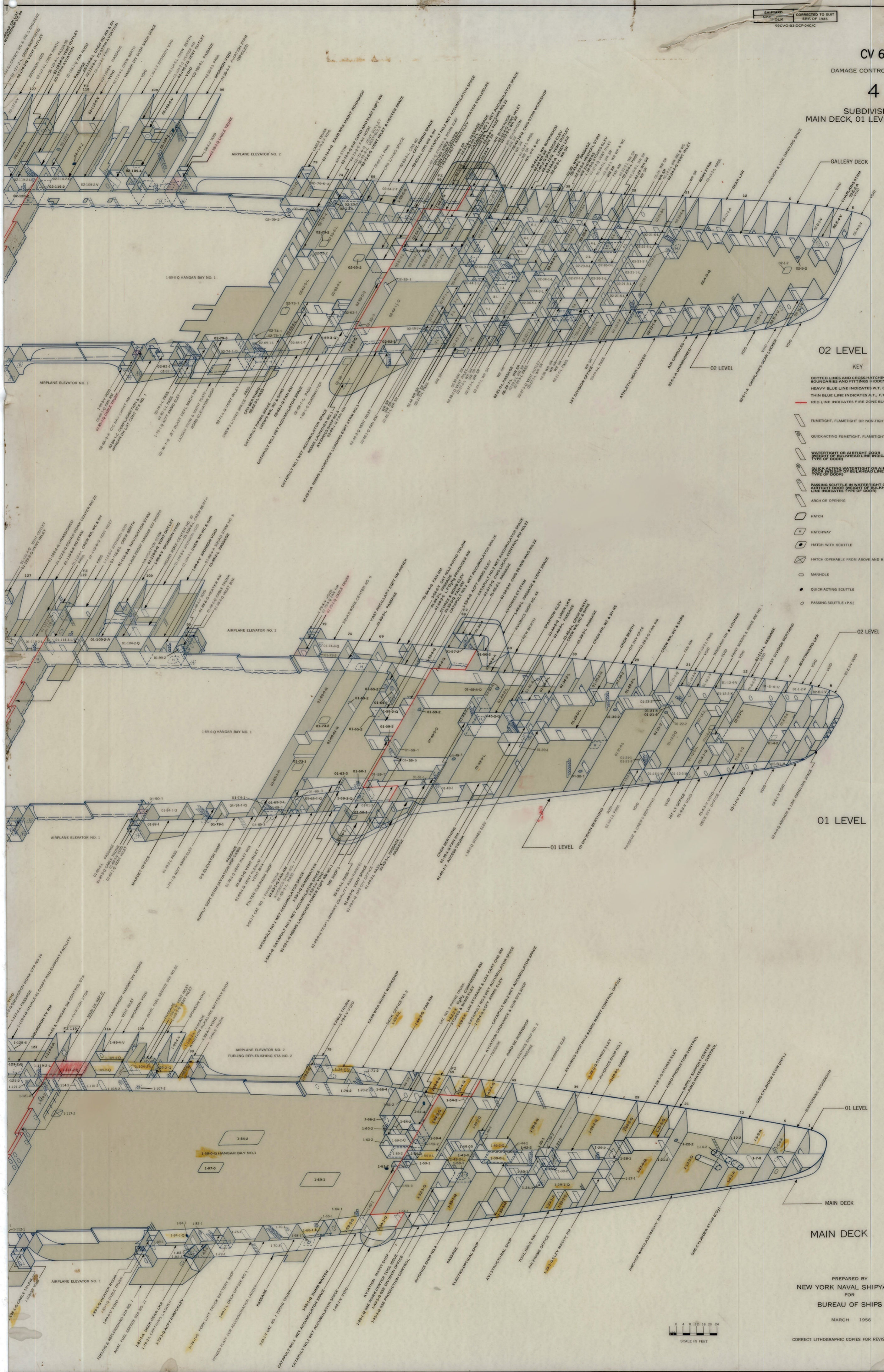
CV 60

DAMAGE CONTROL DIAGRAM

4

SUBDIVISION  
MAIN DECK, 01 LEVEL, 02 LEVEL





**O2 LEVEL**

**KEY**

DOTTED LINES AND CROSS-HATCHING INDICATE BOUNDARIES AND FITTINGS IN DOOR FROM VIEW

HEAVY BLUE LINE INDICATES W.T. OR O.T. BOUNDARIES

THIN BLUE LINE INDICATES A.T., F.T. OR N.T. BOUNDARIES

RED LINE INDICATES FIRE ZONE BULKHEAD

- FUMETIGHT, FLAMETIGHT OR NON-TIGHT DOOR
- QUICKACTING FUMETIGHT, FLAMETIGHT OR NON-TIGHT DOOR
- WATERTIGHT OR AIRTIGHT DOOR (WEIGHT OF BULKHEAD LINE INDICATES TYPE OF DOOR)
- QUICKACTING WATERTIGHT OR AIRTIGHT DOOR (WEIGHT OF BULKHEAD LINE INDICATES TYPE OF DOOR)
- PASSING SCUTTLE IN WATERTIGHT OR AIRTIGHT DOOR (WEIGHT OF BULKHEAD LINE INDICATES TYPE OF DOOR)
- ARCH OR OPENING
- HATCH
- HATCHWAY
- HATCH WITH SCUTTLE
- HATCH (OPERABLE FROM ABOVE AND BELOW)
- MANHOLE
- QUICKACTING SCUTTLE
- PASSING SCUTTLE (P.S.)

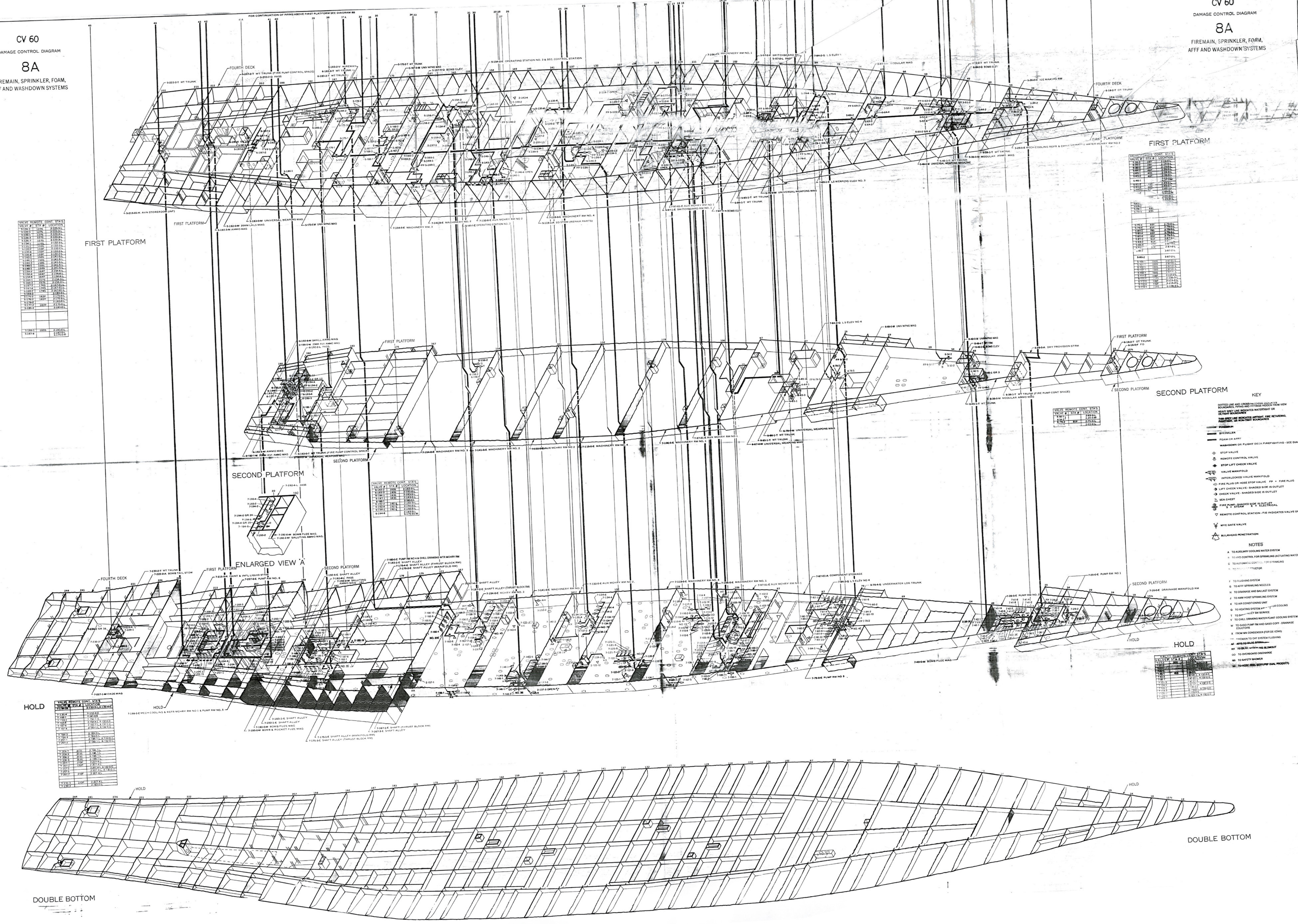
O1 LEVEL

MAIN DECK

PREPARED BY  
NEW YORK NAVAL SHIPYARD  
FOR  
BUREAU OF SHIPS  
MARCH 1956

SCALE IN FEET

CORRECT LITHOGRAPHIC COPIES FOR REVISIONS.



VALVE REMOTE CONTROL	VALVE #	SYMBOL	LOCATION
	7100		7100
	7101		7101
	7102		7102
	7103		7103
	7104		7104
	7105		7105
	7106		7106
	7107		7107
	7108		7108
	7109		7109
	7110		7110
	7111		7111
	7112		7112
	7113		7113
	7114		7114
	7115		7115
	7116		7116
	7117		7117
	7118		7118
	7119		7119
	7120		7120
	7121		7121
	7122		7122
	7123		7123
	7124		7124
	7125		7125
	7126		7126
	7127		7127
	7128		7128
	7129		7129
	7130		7130
	7131		7131
	7132		7132
	7133		7133
	7134		7134
	7135		7135
	7136		7136
	7137		7137
	7138		7138
	7139		7139
	7140		7140
	7141		7141
	7142		7142
	7143		7143
	7144		7144
	7145		7145
	7146		7146
	7147		7147
	7148		7148
	7149		7149
	7150		7150
	7151		7151
	7152		7152
	7153		7153
	7154		7154
	7155		7155
	7156		7156
	7157		7157
	7158		7158
	7159		7159
	7160		7160
	7161		7161
	7162		7162
	7163		7163
	7164		7164
	7165		7165
	7166		7166
	7167		7167
	7168		7168
	7169		7169
	7170		7170
	7171		7171
	7172		7172
	7173		7173
	7174		7174
	7175		7175
	7176		7176
	7177		7177
	7178		7178
	7179		7179
	7180		7180
	7181		7181
	7182		7182
	7183		7183
	7184		7184
	7185		7185
	7186		7186
	7187		7187
	7188		7188
	7189		7189
	7190		7190
	7191		7191
	7192		7192
	7193		7193
	7194		7194
	7195		7195
	7196		7196
	7197		7197
	7198		7198
	7199		7199
	7200		7200

VALVE REMOTE CONTROL	VALVE #	SYMBOL	LOCATION
	7201		7201
	7202		7202
	7203		7203
	7204		7204
	7205		7205
	7206		7206
	7207		7207
	7208		7208
	7209		7209
	7210		7210
	7211		7211
	7212		7212
	7213		7213
	7214		7214
	7215		7215
	7216		7216
	7217		7217
	7218		7218
	7219		7219
	7220		7220
	7221		7221
	7222		7222
	7223		7223
	7224		7224
	7225		7225
	7226		7226
	7227		7227
	7228		7228
	7229		7229
	7230		7230
	7231		7231
	7232		7232
	7233		7233
	7234		7234
	7235		7235
	7236		7236
	7237		7237
	7238		7238
	7239		7239
	7240		7240
	7241		7241
	7242		7242
	7243		7243
	7244		7244
	7245		7245
	7246		7246
	7247		7247
	7248		7248
	7249		7249
	7250		7250

VALVE REMOTE CONTROL	VALVE #	SYMBOL	LOCATION
	7251		7251
	7252		7252
	7253		7253
	7254		7254
	7255		7255
	7256		7256
	7257		7257
	7258		7258
	7259		7259
	7260		7260
	7261		7261
	7262		7262
	7263		7263
	7264		7264
	7265		7265
	7266		7266
	7267		7267
	7268		7268
	7269		7269
	7270		7270
	7271		7271
	7272		7272
	7273		7273
	7274		7274
	7275		7275
	7276		7276
	7277		7277
	7278		7278
	7279		7279
	7280		7280
	7281		7281
	7282		7282
	7283		7283
	7284		7284
	7285		7285
	7286		7286
	7287		7287
	7288		7288
	7289		7289
	7290		7290
	7291		7291
	7292		7292
	7293		7293
	7294		7294
	7295		7295
	7296		7296
	7297		7297
	7298		7298
	7299		7299
	7300		7300

VALVE REMOTE CONTROL	VALVE #	SYMBOL	LOCATION
	7301		7301
	7302		7302
	7303		7303
	7304		7304
	7305		7305
	7306		7306
	7307		7307
	7308		7308
	7309		7309
	7310		7310
	7311		7311
	7312		7312
	7313		7313
	7314		7314
	7315		7315
	7316		7316
	7317		7317
	7318		7318
	7319		7319
	7320		7320
	7321		7321
	7322		7322
	7323		7323
	7324		7324
	7325		7325
	7326		7326
	7327		7327
	7328		7328
	7329		7329
	7330		7330
	7331		7331
	7332		7332
	7333		7333
	7334		7334
	7335		7335
	7336		7336
	7337		7337
	7338		7338
	7339		7339
	7340		7340
	7341		7341
	7342		7342
	7343		7343
	7344		7344
	7345		7345
	7346		7346
	7347		7347
	7348		7348
	7349		7349
	7350		7350

VALVE REMOTE CONTROL	VALVE #	SYMBOL	LOCATION
	7351		7351
	7352		7352
	7353		7353
	7354		7354
	7355		7355
	7356		7356
	7357		7357
	7358		7358
	7359		7359
	7360		7360
	7361		7361
	7362		7362
	7363		7363
	7364		7364
	7365		7365
	7366		7366
	7367		7367
	7368		7368
	7369		7369
	7370		7370
	7371		7371
	7372		7372
	7373		7373
	7374		7374
	7375		7375
	7376		7376
	7377		7377
	7378		7378
	7379		7379
	7380		7380
	7381		7381
	7382		7382
	7383		7383
	7384		7384
	7385		7385
	7386		7386
	7387		7387
	7388		7388
	7389		7389
	7390		7390
	7391		7391
	7392		7392
	7393		7393
	7394		7394
	7395		7395
	7396		7396
	7397		7397
	7398		7398
	7399		7399
	7400		7400

- KEY**
- DOTTED LINE AND SHADING INDICATES LOCATION VIEW
  - HEAVY SHED LINE INDICATES WATERPROOF OR
  - PATENT LINE INDICATES SPECIAL FIRE NETWORK
  - FIRE PUMP
  - STOP VALVE
  - STOP LIFT CHECK VALVE
  - STOP LIFT CHECK VALVE
  - VALVE MANIFOLD
  - INTERLOCKED VALVE MANIFOLD
  - FIRE PLUG OR HOSE STOP VALVE - FF - FIRE PLUG
  - LIFT CHECK VALVE - SHADDED SIDE IS OUTLET
  - CHECK VALVE - SHADDED SIDE IS INLET
  - SEA CHEST
  - FIRE PUMP (SHADDED SIDE IS ELECTRICAL)
  - REMOTE CONTROL STATION - FIG INDICATES VALVE OPERATED
  - WYE GATE VALVE
  - BULKHEAD PENETRATION

- NOTES**
- A. TO AUXILIARY COOLING WATER SYSTEM
  - B. TO SHED CONTROL FOR SPRINKLING (ACTUATING WATER)
  - C. TO AUXILIARY CONTROL FOR STRINGS
  - D. TO SHED
  - E. TO FLOODING SYSTEM
  - F. TO AIR SPRINKLING SYSTEM
  - G. TO CONDENSATE AND BALLAST SYSTEM
  - H. TO AIR CONDITIONING SYSTEM
  - I. TO HEATING SYSTEM (AIR-TO-WATER COOLING)
  - J. TO AIR-TO-WATER SERVICE
  - K. TO CHILL CONDENSING WATER PLANT COOLING SYSTEM EXHAUSTION
  - L. TO GAS PUMP RM AND GAS EXHAUST COOLING EXHAUSTION
  - M. FROM W/W CONDENSER (FOR USE CHILL EXHAUSTION)
  - N. FROM W/W CONDENSER (FOR USE CHILL EXHAUSTION)
  - O. TO SAFETY ROOMS
  - P. TO HOLD
  - Q. TO HOLD
  - R. TO HOLD
  - S. TO HOLD
  - T. TO HOLD
  - U. TO HOLD
  - V. TO HOLD
  - W. TO HOLD
  - X. TO HOLD
  - Y. TO HOLD
  - Z. TO HOLD





CV 60  
DAMAGE CONTROL DIAGRAM  
8B  
FIREMAIN, SPRINKLER, FOAM,  
AFF AND WASHDOWN SYSTEMS

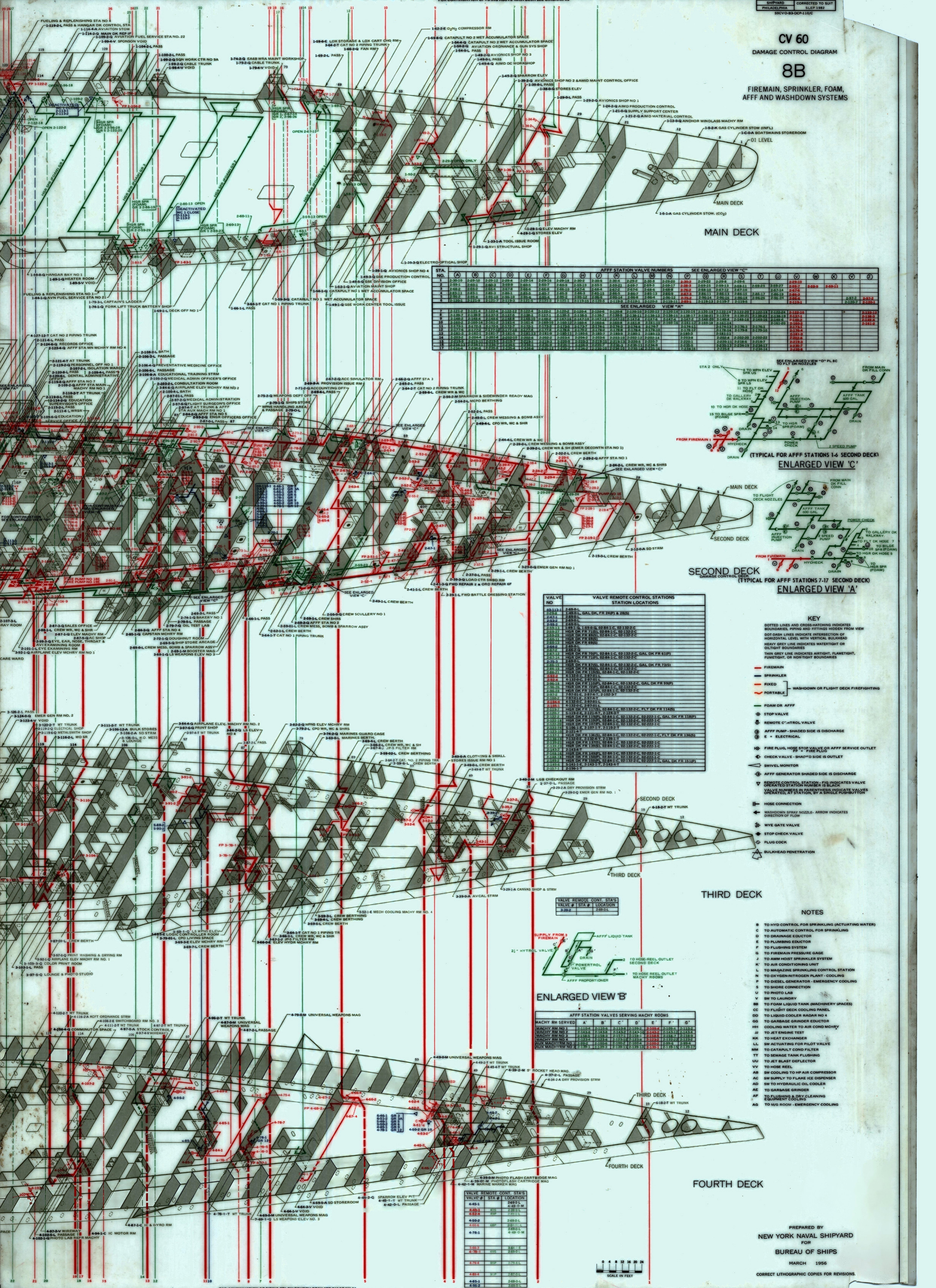


Table with columns for STA. NO., (A), (B), (C), (D), (E), (F), (G), (H), (I), (J), (K), (L), (M), (N), (O), (P), (Q), (R), (S), (T), (U), (V), (W), (X), (Y), (Z). Includes sub-headers for 'AFF STATION VALVE NUMBERS' and 'SEE ENLARGED VIEW "C"'. Contains numerical data for various stations.

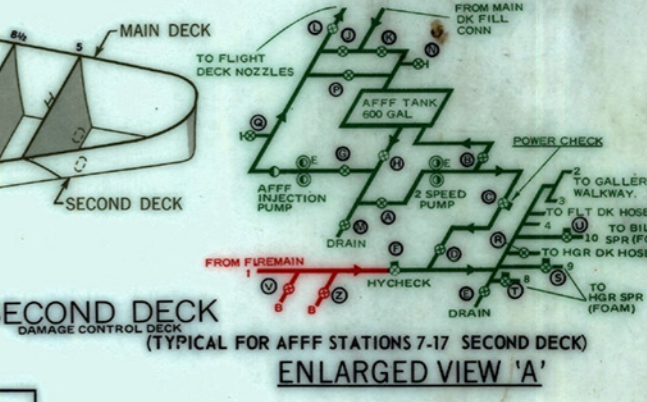


Table titled 'VALVE NO.' and 'VALVE REMOTE CONTROL STATIONS STATION LOCATIONS'. Lists valve numbers and their corresponding locations across the ship's decks.

- KEY
- DOTTED LINES AND CROSS-HATCHING INDICATES BOUNDARIES, PIPING AND FITTINGS HIDDEN FROM VIEW
- DOT DASH LINES INDICATE INTERSECTION OF HORIZONTAL LEVEL WITH VERTICAL BULKHEAD
- HEAVY GREY LINE INDICATES WATER-TIGHT OR FLIGHT DECK BOUNDARIES
- THIN GREY LINE INDICATES AIR-TIGHT, FLAME-TIGHT, FIGHT-DECK OR NIGHT-TIGHT BOUNDARIES
- FIREMAIN
- SPRINKLER
- FIXED
- PORTABLE - WASHDOWN OR FLIGHT DECK FIRE-FIGHTING
- FOAM OR AFF
- STOP VALVE
- REMOTE CONTROL VALVE
- AFF PUMP - SHADED SIDE IS DISCHARGE
- E = ELECTRICAL
- FIRE PLUG, HOSE STOP VALVE OR AFF SERVICE OUTLET
- CHECK VALVE - SHADED SIDE IS OUTLET
- SWIVEL MONITOR
- AFF GENERATOR SHADED SIDE IS DISCHARGE
- REMOTE CONTROL STATION - FILE INDICATES VALVE OPERATED STATION NUMBER IS BLACK
- VALVE NUMBERS IN PARENTHESES INDICATE VALVES OPERATED BY A SINGLE DISTRIBUTION
- HOSE CONNECTION
- WASHDOWN SPRAY NOZZLE - ARROW INDICATES DIRECTION OF FLOW
- WYE GATE VALVE
- STOP CHECK VALVE
- PLUG COCK
- BULKHEAD PENETRATION

- NOTES
B TO HYD CONTROL FOR SPRINKLING (ACTUATING WATER)
C TO AUTOMATIC CONTROL FOR SPRINKLING
D TO DRAINAGE EDUCTOR
E TO PLUMBING EDUCTOR
F TO FLUSHING SYSTEM
G TO FIREMAIN PRESSURE GAGE
J TO AMM HOIST SPRINKLER SYSTEM
K TO AIR CONDITIONING UNIT
L TO MAGAZINE SPRINKLING CONTROL STATION
M TO OX-GEN-NITROGEN PLANT - COOLING
P TO DIESEL GENERATOR - EMERGENCY COOLING
S TO SHORE CONNECTION
U TO PHOTO LAB
V TO LAUNDRY
BB TO FOAM LIQUID TANK (MACHINERY SPACES)
CC TO FLIGHT DECK COOLING PANEL
DD TO LIQUID COOLER RADAR NO. 4
GG TO GARBAGE GRINDER EDUCTOR
HH COOLING WATER TO AIR COND MCHRY
JJ TO JET ENGINE TEST
KK TO HEAT EXCHANGER
LL SW ACTUATING FOR PILOT VALVE
MM TO CATAPULT COND FILTER
NN TO SEWAGE TANK FLUSHING
UU TO JET BLAST DEFLECTOR
VV TO HOSE REEL
SW COOLING TO HP AIR COMPRESSOR
AC SW SUPPLY TO FLAME ICE DISPENSER
AD SW TO HYDRALIC OIL COOLER
AE TO GARBAGE GRINDER
AF TO FLUSHING & DRY CLEANING EQUIPMENT COOLING
AG TO MFG ROOM - EMERGENCY COOLING

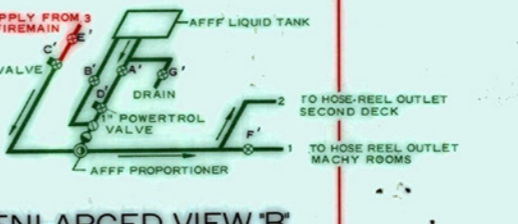


Table titled 'AFF STATION VALVES SERVING MACHY ROOMS'. Lists machy room numbers and their corresponding valve numbers.

Table titled 'VALVE REMOTE CONT. STA'S VALVE # STA # LOCATION'. Lists valve numbers, station numbers, and their locations on the fourth deck.

