

USS Scorpion (SS 278)



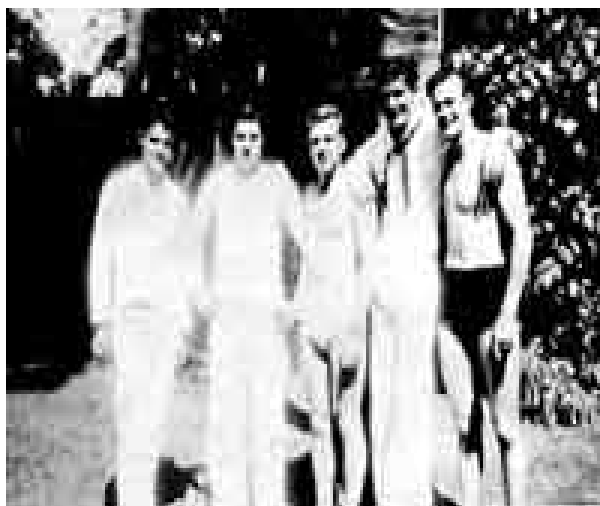
Commander Submarine Force, U.S. Pacific Fleet

USS SCORPION (SS 278)

January 5, 1944 - 77 Men Lost

Departing Pearl Harbor on 29 December 1943, SCORPION (Cmdr. M.G. Schmidt) stopped at Midway to top off with fuel, and left that place on 3 January 1944 to conduct her fourth war patrol. Her assigned area was in the northern East China and Yellow Seas.

On the morning of 5 January, SCORPION reported that one of her crew had sustained a fracture of the upper arm and requested a rendezvous with HERRING (SS-233) which was returning from patrol and was near her. The rendezvous was accomplished on the afternoon of 5 January, but heavy seas prevented transfer of the injured man to HERRING. The latter reported this fact on 6 January, and stated "SCORPION reports case under control." SCORPION was never seen or heard from again after her departure from the rendezvous. On 16 February 1944, STEELHEAD and SCORPION were warned that they were close together, and that an enemy submarine was in the vicinity.



USS Scorpion (SS 278)



When no report was received from her by 24 February 1944, Midway was directed to keep a careful watch for her, and SCORPION was directed to make a transmission. Neither of these measures proved fruitful, and SCORPION was reported on 6 March 1944 as presumed lost.

No information has been received from the Japanese that indicates SCORPION's loss was the result of enemy antisubmarine tactics. There were, however, several mine lines across the entrance to the Yellow Sea. The presence of these mine lines and the "restricted area" bounding them were discovered from captured Japanese Notices to Mariners at much later date. In the meantime several submarines had made patrols in this area, crossing and re-crossing the mine lines without incident, and coming safely home. It is probable that these mine lines were very thin, offering only about a 10 percent threat to submarines at maximum, and steadily decreasing in effectiveness with the passage of time. SCORPION was lost soon after these mines were laid, or at a time when they presumably offered the greatest threat. She could have been an operational casualty, but her area consists of water shallow enough so that it might be expected that some men would have survived. Since we know of no survivors, the most reasonable assumptions that she hit a mine.

In her first three patrols, SCORPION sank ten ships, for a total of 24,000 tons, and damaged two more, for 16,000 tons. Her first war patrol was in the approaches to Tokyo in April 1943. Here she sank two freighters, four sampans and two patrol craft. In addition, she damaged a freighter. On her second patrol, conducted in the Yellow Sea, she sank two freighters. Her third patrol was made in the Mariana Islands, and resulted in damage to a tanker.

Sailors Lost On USS SCORPION (SS 278) 1-5-1944

Alexander, J. S. EM2

USS Scorpion (SS 278)

Appleton, C. W. SC3
Bausman, L. L. SC1
Bell, H. F. S1
Brown, R. T. LTJG
Bynum, R. H. QM1
Chamberlain, R. J. EM2
Christman, H. F. S1
Clough, J. "E" TM2
Cornelius, T. T. CMOMMA
Cunningham, J. W. RELE
Deane, L. W. TM3
Dews, R. P. STM1
Drake, V. R. ENS
Drane, R. B. LTJG
Echorst, E. L. TM2
Ellis, R. H. LTJG
English, E. J. MOMM1
Faber, L. M. S1
Fasnacht, J. A. QM2
Faustman, L. D. MOMM1
Ferguson, N. ST3
Flaherty, W. A., Jr. CQMA
Glazier, J. F. GM2
Harvey, R. D., Jr. F2
Harvey, P. L. EM2
Heidenrich, J. T. TM1
Heinz, C. P. MOMM1
Himes, D. A. MOMM3
Hood, F. E. S2
Hund, C. M. CGMA
Hutchinson, R. E. TM3
Ingram, G. E. MOMM2
Jacobs, R. L. S2
Koster, N. L. CMOMMA
Krawczykowicz, E. MOMM3
Labarthe, W. C. MOMM2
Larimore, B. E. TM2
Lloyd, R. W. MOMM2
Manganello, L. A. CCSTDA
Matthews, S. E. RM1
McMillan, R. K. MOMM1
McNally, F. A., Jr. RT2
Miller, P. J., Jr. EM2
Morgan, H. W. QM2
Mosbey, L. "E" EM2
Pierce, C. B. LT

USS Scorpion (SS 278)

Rairden, R. M. Y3
Randolph, W. L. CEMA
Rawlings, J. P. CEMA
Robiliard, F. J. S1
Roche, T. E. TW2
Rowe, A. V. S2
Saunders, B. S1
Scheu, D. S. LT
Schmidt, M. C. CDR
Seaman, D. A. MOMM1
Sears, W. I. EM1
Setvate, M. W. TM3
Shake, J. F1
Shapiro, I. S. PHM1
Shea, P. D. MOMM3
Sink, R. O. MOMM3
Skelton, S. R. TM3
Smith, D. E. RM3
Smith, J. F. TM3
Spears, C. R. CMOMMA
Sturges, E. A. MOMM1
Tarbell, W. E. EM1
Townsend, J. RM3
Udick, R. V. TM1
Voorhees, J. L. TM2
Willford, R. R. MOMM3
Wise, R. J., Jr. LT
Womack, R. L. MOMM2
Zimmermann, K. RM1
Weidenbach, R. F. FC3