

USS Escolar (SS 294)



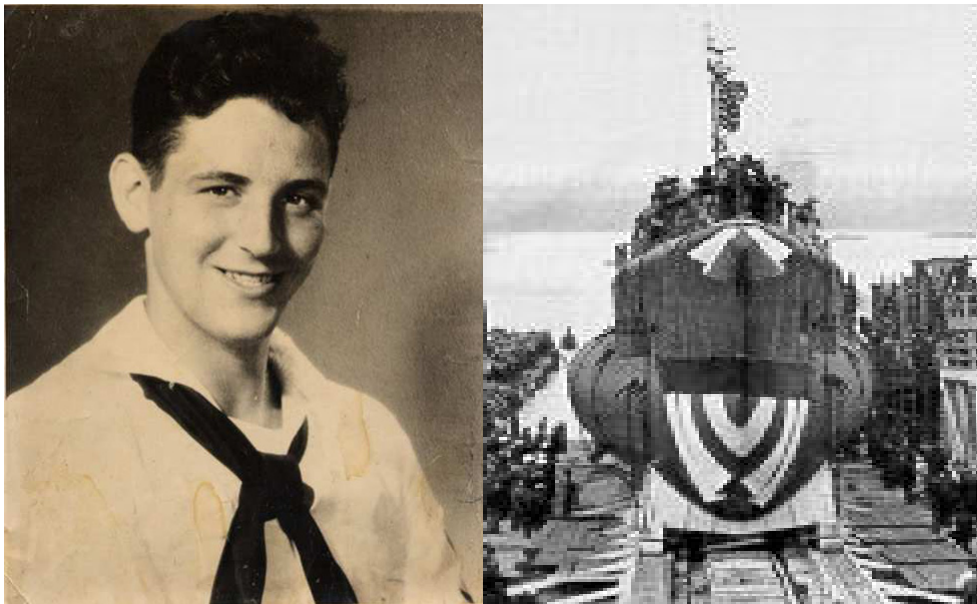
Commander Submarine Force, U.S. Pacific Fleet

USS ESCOLAR (SS 294)

October 17, 1944 - 82 Men Lost

ESCOLAR (Cmdr. W.J. Millican) departed Pearl Harbor on September 18, 1944, to proceed to Midway to top off with fuel. There she joined CROAKER and PERCH and left on September 23rd to conduct a coordinated patrol (ESCOLAR's first patrol) in the Yellow Sea. Cmdr. Millican was in command of this coordinated attack group, which was designated "Millican's Marauders."

On September 30th, when ESCOLAR was estimated to be about north of the Bonin Islands, the following partial message was received from her: "This from ESCOLAR X attacked with deck gun boat similar to ex- Italian Peter George five OTYI----." Although no further transmissions have ever been received by bases from ESCOLAR, who was forced to break off the transmission and the engagement with the gunboat at this time, the commanding officer of CROAKER has stated that she suffered no damage and was in frequent communication with PERCH and CROAKER until October 17, 1944.



USS Escolar (SS 294)



PERCH reported that on 17 October she had received a message from ESCOLAR stating that she was in position and was heading northeast. Neither PERCH nor CROAKER could raise ESCOLAR by radio after this transmission was received.

Had ESCOLAR left her area on the scheduled date, she would have arrived at Midway about November 13, 1944. All attempts to contact ESCOLAR failed and she was reported on November 27, 1944 as presumed lost. It is assumed that she was lost about October 17th. Information supplied by the Japanese on anti-submarine attacks gives no clue as to her loss, but the Yellow Sea area is thought to have been mined. A course line plotted between the two positions given above does not cross any known Japanese mine lies, but positions of mines laid before April 1945 are not definitely located. The known minefields in Tsushima Strait were laid in April 1945. However, there were mines in the general area of ESCOLAR's predicted position, and the most likely explanation for her end at present is that she detonated a mine.

Sailors Lost On USS ESCOLAR (SS-294) 10-17-1944

Abram, L. L. MOMM2
Anders, D. W. RM3
Babb, T. LT
Bailey, L. L. CEMA
[Balfe, D. L. TM2](#)
Becker, F. E. EM3
Bender, J. J. PHM1
Blaha, F. LCDR
Bones, R. E. F1
Bonk, B. W. S1

USS Escolar (SS 294)

Brabham, C. E. CRMA
Broeker, G. J. RT2
Brouskie, F. EM1
Brown, E. E. F1
Cahill, J. M. MOMM3
Calabrese, R. L. TM3
Caldwell, W. T., Jr. TM1
Campbell, K. S. RM1
Cheosky, M. J. EM3
Cifrodella, J. J. TM2
[Clary, J. W. CMOMMA](#)
Coleman, D. E. QM3
Cummings, J. M. MOMM1
Daniels, L. C., Jr. QM2
Ennis, J. F. S1
Evans, B. STM1
Farrar, R. L. LT
Farwell, J. C. CY
Fine, F. J. TM2
Fostair, J. E. QM2
Foster, A. B. GM2
Fox, L. B. RT1
Fulton, D. A. MOMM1
Gancarz, W. EM1
Glading, D. H. MOMM3
Gorecki, A. E. CCS
Hahn, F. L. TM3
Hampton, C. L. QM1
Hill, C. J. LT
Horodynski, E. S. FC2
Jeffrey, L. V. LTJG
Johnson, J. G. MOMM3
Kellam, J. H. EM2
Killough, D. C. MOMM1
Komes, H. B. SC2
Krause, F. B., Jr. SM1
Larue, V. J. S1
Latham, H. C. LTJG
Lieder, A. MOMM1
Lyons, W. C., Jr. MOMM2
Masloski, J. F1
McCloskey, T. D. RM2
Miller, S. D. CEMA
Millican, W. J. CDR
Morris, J. J. S2
Munsel, J. M. MOMM3

USS Escolar (SS 294)

Newton, R. B., Jr. CTMA
Norford, R. N. F1
O'Connell, J. A., Jr. MOMM1
Pennington, B. L. CMOMM
Phillips, D. W. F1
Raley, J. A. STM2
Romond, J. L. MOMM3
Searls, R. W. LTJG
Shirah, R. A. EM3
Slavik, J. A. F2
Smith, A. R. S1
Smith, T. B. F1
Spoust, D. BKR3
Tokarchek, A. GM1
Trensch, H. EM3
Tucker, J. B. S1
Tucker, T. E. F1
Turner, R. C. EM2
Valentino, R. MOMM2
Velten, W. TM3
Wallace, G. M. TM1
Wells, N. P. S1
Whitehouse, J. H. ENS
Wybrow, R.W. SC3
[Yaworsky, W. TM3](#)
Zumar, A. S1