

Shipwork  
Always  
Welcome—  
Let's Get  
With It,  
All Hands



Shipwork  
Always  
Welcome—  
Let's Get  
With It,  
All Hands

Vol. XXXI, No. 14

**Our Sole Mission Is To Serve the Fleet**  
Mare Island Naval Shipyard, Vallejo, Calif.

Nov. 5, 1971

## Deep-Diving Dolphin Arrives for Work

The Shipyard is happy to welcome the deep-diving submarine DOLPHIN (AGSS 555) to the waterfront for a restricted availability. She is expected to remain until the middle of next month.

Ship superintendent for the DOLPHIN job is LT E. J. Coppola. Among other updates for the sub, there will be a battery change, valve overhauls and a ShipAlt for the diesel engine exhaust.

Lieutenant Coppola told the GRAPEVINE that a great team spirit has developed among the DOLPHIN workforce and he hopes this continues.

### Portsmouth Ship

The unique deep-diver was designed and built by a sister shipyard—Portsmouth, N. H., was commissioned in 1968 and is now under the command of CDR John R. Seesholtz, who took her over in June 1970.

In October 1970 the DOLPHIN became part of Submarine Development Group One and arrived in San Diego in November 1970.

Since arriving to take her place in the Pacific Fleet, the DOLPHIN has been engaged in some research operations working with Naval Underseas Research and Development Center.

Operations have included sea tests of the developmental sonar and associated electronics equipment conducted early this year.

### Arctic Adventure

Then the big adventure came for the DOLPHIN and her men — she went on a four-month oceanographic research cruise to the Gulf of Alaska returning in August.

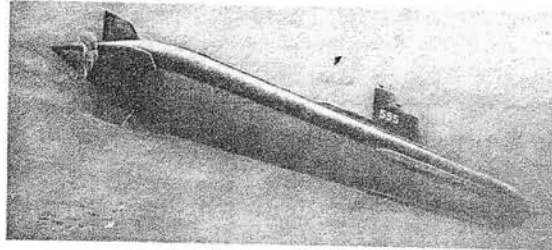
According to her official "biography," the major purpose of the DOLPHIN Program is to determine experimentally by actual tests at sea the overall tactical significance of a deep-diving submarine. The DOLPHIN is to be used to develop and test advanced engineering design features, conduct acoustic tests and research.

Acoustic and oceanographic research in the DOLPHIN program, at least in the beginning, is secondary to the determination of the increase in offensive and defensive antisubmarine capability to be achieved by operating at deep depths.

There are numerous deep diving subsimmers available which can operate as deep or even much deeper than DOLPHIN, and they are certainly much cheaper to build and operate. However, these subsimmers are inadequate for most of the work necessary to achieve the primary and secondary goals of the DOLPHIN.

### Twelve-Ton Payload

The DOLPHIN has a scientific payload of 12 tons. This figure is in addition to all of the ship's equipment. This payload, coupled with the adequate space and electrical power available, make this the only deep diving platform available in the near future capable of carrying and operating a high performance sonar, etc. Another attractive feature is a submerged speed in excess of 12 knots. This ship can remain submerged for a day if necessary, stay at sea as long as two weeks.



Artist Sees the Dolphin Underwater



CDR J. R. SEESHOLTZ  
... C. O. of Dolphin

### Skipper of Ship

Native Pennsylvanian CDR J. R. Seesholtz, C. O. of the deep-diving DOLPHIN (AGSS 555), was X.O. of that ship before becoming its captain. He reported to the DOLPHIN from the TIGRONE (AGSS 419) of which he had been X.O. for a year.

The DOLPHIN's C. O. earned a doctor's degree in oceanography at M.I.T. in 1968 and before that served on the P-sub THOMAS A. EDISON (SSBN 610) for three years. Duty on attack sub CHARR (SS 328) preceded his EDISON tour. (The CHARR has been a frequent visiting ship at Mare Island.)

Commander Seesholtz was graduated from Annapolis in 1956. He is married to the former Marylee Gehris and has two children, Amy and Daniel.

# Mare Island GRAPEVINE

**Our Sole Mission Is To Serve the Fleet**

Vol. XXXIII, No. 1

Mare Island Naval Shipyard, Vallejo, Calif.

May 4, 1973

*Inside . . .*

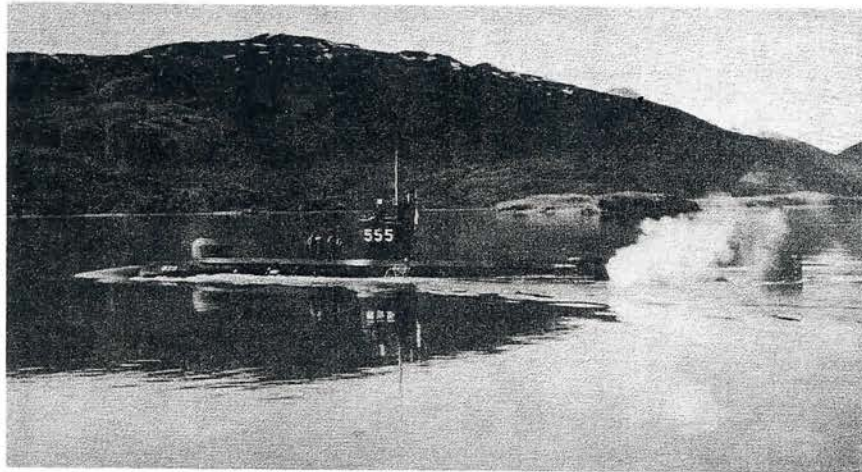
- Page 2—Bond Drive Beginning
- Page 2—Another GV Anniversary
- Page 3—For EEO, Women
- Page 3—Alvin Assistance
- Page 5—New Look for CU
- Page 8—QA Going All-Out
- Page 8—Fourth Wage Step

## HOUSE, GARDEN TOUR SUNDAY

The Officers' Wives Club is sponsoring the "House and Garden Tour" this Sunday, 1-5 p.m., which is open to the general public. It provides an opportunity to see quarters built at various periods through the past century.

Tickets (\$2 each) are available at Central Cafeteria, Special Services Office, several Vallejo business establishments and, Sunday, near the Main Gate.

Eleven quarters, marked by posters, feature individual themes for the charity event. A tour of Alden Park and gardens is set, as well as a 3:30 band concert in the Park.



**RECENT ARRIVAL** — Submarine DOLPHIN (AGSS 555), shown cruising in Alaskan waters, is at the Shipyard for regular overhaul. The 555

holds the record for the deepest dive among submarines. Small for a submarine, she is much larger than other deep submergence vessels.

## Deep Diving Submarine Dolphin Here for First Regular Overhaul

A pocket-size submarine, DOLPHIN (AGSS 555) is at the Shipyard for her first regular overhaul. The work will keep her at MI about six months. Shipyarders got an earlier look at the sub in 1971 when she was here for a restricted availability.

The DOLPHIN is a unique deep-diving research sub that set a depth record for operating submarines in 1968 and the following year fired a torpedo at the great-

est depth ever. Both records still stand.

While small as a submarine, her 900-ton displacement is three to four times that of the Navy's nine other deep submergence vessels combined. The DOLPHIN has a diesel electric drive which enables her to operate independently, unlike the DSVs which require towing to a diving site.

The AGSS 555 carries as much

*Turn to Page 2*

## Sub Dolphin . . .

*From Page 1*

sonar equipment as a Polaris sub and berths four scientists in addition to its crew of three officers and 20 men.

Because of the great pressures, hull openings are kept to a minimum. There is only one access hatch and no sea water cooling pipes. Instead water is cooled by piping it to panels located against the ship's hull.

The DOLPHIN does extensive acoustic research in deep waters, oceanic survey work, combined weapon, launchers and sensor trials and engineering evaluations for many Navy and civilian activities.

Designed and built by the Portsmouth Naval Shipyard, the 555 has operated out of San Diego since 1970.

## Commanding Officer Member of Dolphin's Commissioning Crew

At the conn of DOLPHIN when she arrived at the Shipyard was CDR Eugene E. Lindsey, Jr. A member of her commissioning crew, he has had command of the deep diving submarine since 1972.

A 1958 graduate of the U.S. Naval Academy, Commander Lindsey earned a Master of Arts Degree in business administration from Auburn University in 1970. He also has attended submarine school, navigation school and the Air Force Command and Staff College.

After an initial assignment aboard the COMPTON (DD 705), he has served with the BARBERO (SSG 317), was with the commissioning crew of the JAMES MONROE (SSBN 622) and the staff of Commander Submarine Force Atlantic Fleet.



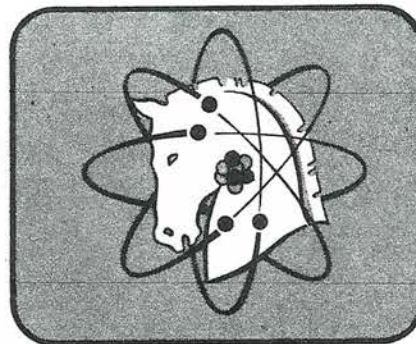
**CDR EUGENE E. LINDSEY, JR.**  
... Skipper of DOLPHIN



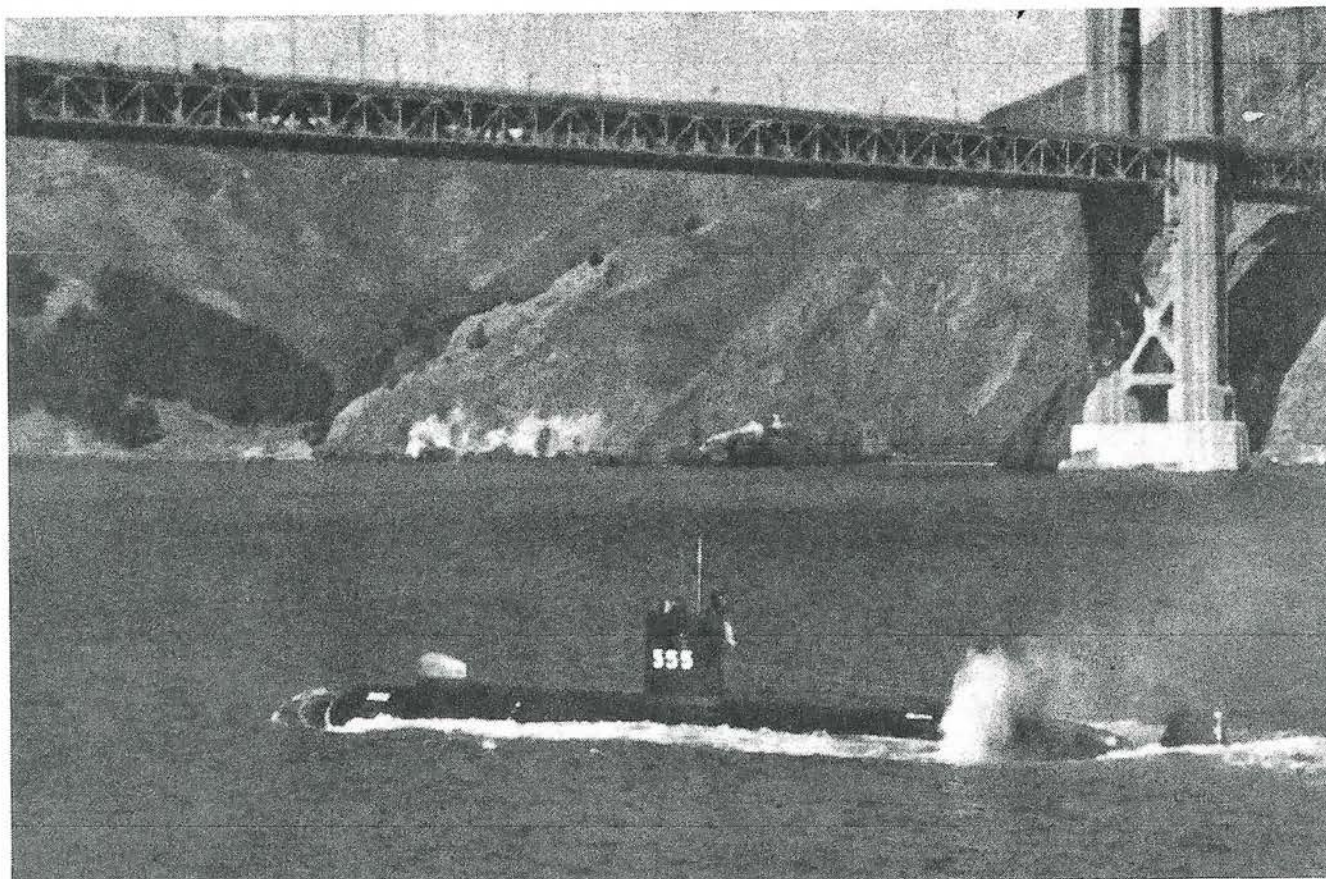
Mare Island  
*grapevine*

Our sole mission is to serve the fleet

Mare Island Naval Shipyard, Vallejo, Calif.



May 26, 1978



**POCKET SUBMARINE**—Shown near the Golden Gate, the DOLPHIN (AGSS 555) will begin regular overhaul at Mare Island today. The small deep-diving research submarine is used to

test advanced submarine components. The DOLPHIN, described as a "one-of-a-kind ship for one-of-a-kind jobs," will have several systems updated during her stay.



# Wojtkowiak relieving Verd in 555 command change

Change of command ceremonies were slated yesterday at 10 a.m. in Alden Park (weather permitting) for the deep-diving research submarine DOLPHIN (AGSS 555). Lieutenant Commander Daniel L. Wojtkowiak was to assume command of the tiny submarine, relieving CDR George H. Verd.

Commissioned in 1967 via Officer Candidate School, LCDR Wojtkowiak served in POMODON (SS 486), where he earned his submarine dolphins. After serving as Special Projects Officer on the staff of ComSubRon THREE, the new skipper attended Naval Postgraduate School, earning his master's in electrical engineering.

He served as Executive Officer of SAILFISH (SS 572) for two years, qualifying for submarine command, before being assigned to Naval Electronics System Command Headquarters, Washington, D.C., last January as a program supervisor in submarine electronics.

A unique submarine, DOL-



**LCDR WOJTKOWIAK**

... New CO for Dolphin

PHIN is designed to test advanced submarine structures and systems, serving as a platform for underwater research. In November 1968 she set a depth record for operating submarines which still stands; in August of the following year she launched a torpedo at record depths. DOLPHIN has been at the Shipyard since late May, undergoing regular overhaul.

12/22/1978

## Unique research vessel Dolphin to arrive for overhaul

The unique deep-diving research submarine USS *Dolphin* (AGSS 555) is due to arrive this weekend to begin regular overhaul by the Shipyard. Although it has visited Mare Island in the interim, the ship was last overhauled here in 1978.

Seven U.S. Navy ships have borne the name *Dolphin*, the first participating in raids against England during the Revolutionary War. The last, the SS 169, was the forerunner of the "fleet boat" class of submarines, the workhorses of World War II.

A one-of-a-kind submarine for one-of-a-kind jobs, the 555 was designed to test advanced submarine structures and systems. It serves as a platform for scientific investigation at depths which, for a fully operational and inde-

pendent submarine, are unprecedented.

Designed and built by Portsmouth Naval Shipyard, *Dolphin* was commissioned in 1968. That November it set a depth record for operating submarines that still stands; the following August it set another depth record in torpedo launching.

A major conversion by PNS in 1969-70 equipped *Dolphin* with a new sonar installation for acoustic and oceanographic research.

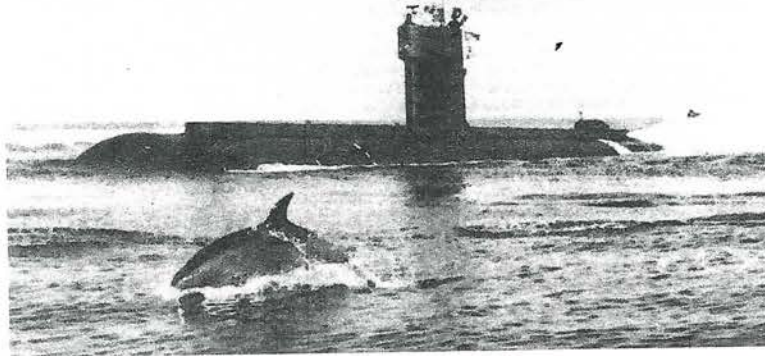
Today the 555 represents a unique blend of the lessons of the past and the most advanced technology of the present.

*Dolphin's* skipper, Commander Robert H. Paleck, took command of the ship this year after serving as executive officer aboard USS *Blueback* (SS 581) and, from 1979 to 1982, as projects officer aboard USS *Parche* (SSN 683). His sea service also includes a tour with USS *Gudgeon* (SS 567).

Shore assignments have in-

cluded service with Commander Submarine Development Group ONE and, from 1977 to 1979, a tour as OIC of the Naval Research Laboratory Field Site at Point Mugu.

CDR Paleck wears the Legion of Merit with four gold stars, Meritorious Service Medal, Navy Commendation Medal and Navy Unit Commendation with two bronze stars, among others. He and his wife, Pamela, have two children.



Times-Herald  
Friday, May 24, 2002

COUNTY/STATE/LOCAL

# Navy sub towed home

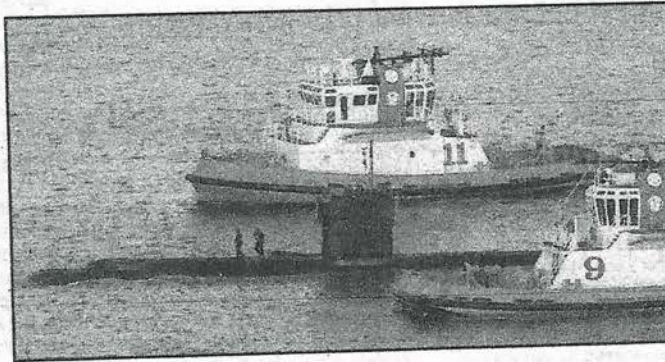
by SETH HETTENA  
Associated Press

SAN DIEGO — The damaged USS *Dolphin* was being towed back to port Thursday following a fire and flooding that forced the crew to abandon the world's deepest diving submarine in heavy seas.

The sub was about 100 miles southwest of San Diego late Tuesday and had surfaced in heavy seas to recharge its batteries when the crew reported fire and flooding. All 43 people on board were safely rescued after what the pilot of a Coast Guard rescue helicopter described as a harrowing evacuation.

Cmdr. Stephen Kelety, a highly-decorated Naval officer, gave the order to abandon ship about 2 p.m. Wednesday when the flames roved too hard for the crew to control.

Sailors scrambled onto the sub's deck, clinging to a steel safety wire while 10-foot waves knocked several men into the ocean, according to the pilot of a rescue helicopter. The Coast Guard pulled two sailors from the water. Others swam to the safety of a nearby research vessel.



THE USS DOLPHIN, center, enters San Diego Bay under tow by two tugboats Thursday in San Diego. The diesel submarine flooded and caught fire Tuesday night about 100 miles southwest of San Diego forcing its crew to abandon ship.  
Associated Press

"It was complete chaos," the Coast Guard helicopter pilot, Lt. Cmdr. Mark Ryan told The San Diego Union-Tribune. "All I saw was elbows and butts and legs flying around. They were getting tossed like rag dolls."

Ryan's account of the rescue contrasted with the version presented by the head of local submarine operations. Capt. Bruce Smith said Wednesday the rescue took place "in an orderly fashion."

The Navy declined Thursday to describe the extent of the damage to the 34-year-old vessel.

A towboat was slowly hauling the 950-ton submarine back to its homeport of San Diego, said

Wendell Koi of Foss Maritime. The Pacific Viking was expected to have the *Dolphin* back in port about 5:30 p.m.

The *Dolphin* is essentially the Navy's main underwater research laboratory. It was commissioned in 1968 and is the Navy's only diesel-electric submarine.

It surfaces to get fresh air to run its diesel engines and charge the batteries that power its electric engines underwater.

The *Dolphin* reached a record depth of more than 3,000 feet in 1968, shortly after it was commissioned, and was awarded a meritorious unit commendation, the second-highest award for individual

ships.

In 2000, the *Dolphin* sent e-mail messages from a depth of 400 feet, sending digital data through the water by sound energy.

The submarine is involved in testing new weapons and technologies that are classified. It left San Diego on Monday to perform research on advanced Mark 54 torpedoes that can be dropped from the air and target enemy submarines.

If the *Dolphin* cannot be returned to service, the Navy would lose a unique research tool, and there are no replacements waiting in the wings, Smith said.