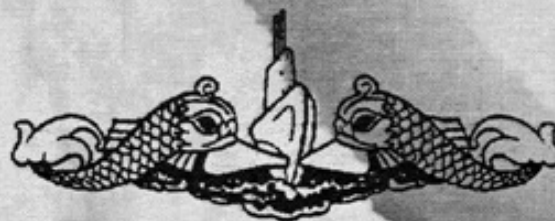


**FAREWELL
CEREMONY**

**UNITED STATES SHIP
WHALE
(SSN 638)**

28 APRIL 1995



**NAVAL SUBMARINE BASE
GROTON, CONNECTICUT**



CHIEF OF NAVAL OPERATIONS

A MESSAGE FOR THE OFFICERS AND CREW OF
USS WHALE (SSN 638)

As you prepare to decommission USS WHALE (SSN 638), I congratulate current and former crew members on your historic contributions to our nation's security. While it's always difficult to bid farewell to old friends, each of you can take justifiable pride in your accomplishments throughout WHALE's distinguished career.

For over two and a half decades, WHALE crews have served their country with distinction. On her first Arctic Exercise, she surfaced at the North Pole sixty years to the day and hour after Admiral Perry arrived there. Through numerous North Atlantic and Mediterranean deployments to her final North Pole surfacing and liberty at the top of the world in April 1994, WHALE has performed superbly. Her crews have been decorated many times, receiving, among others, the Navy Unit Commendation, five Meritorious Unit Commendations, and four Battle "E"'s.

Today's ceremony is not the final call of WHALE's journey. Your ship's memory will live on in the hearts of all those who served aboard her and in the hearts of freedom-loving people around the world.

J. M. BOORDA
Admiral, U.S. Navy

USS WHALE (SSN 638)

COMMISSIONED 12 OCTOBER 1968



THE COMMISSIONING PENNANT

At the moment the commissioning pennant is broken, a ship becomes the responsibility of the Commanding Officer, who, together with the ship's officers and men, has the duty of making her ready for any service required by our nation, whether at peace or at war.

For centuries the commissioning pennant has been the symbol of a man-of-war. It is believed to date to the 17th century, when the Dutch were at war with the English. Duty Admiral Maarten Harpertzoon Tromp hoisted a broom at the masthead to symbolize his intention to sweep the English from the sea. This gesture was answered by British Admiral William Blake who hoisted a horsewhip, indicating his intention to chastise the Dutch. The victorious British thus set the precedent for a long, narrow commissioning pennant to symbolize the original horsewhip as the distinctive symbol of a ship of war.

The modern U.S. Navy commissioning pennant is a blue at the hoist with a union of seven white stars and a horizontal red and white stripe at the fly.

FAREWELL CEREMONY PROGRAM

MUSIC

Navy Band Newport

ARRIVAL OF OFFICIAL PARTY

COLOR GUARD

The Silver Dolphins

NATIONAL ANTHEM

Navy Band Newport

INVOCATION

Lieutenant Commander Bradford E. Ableson CHC, USN

WELCOMING REMARKS

*Commander Kenneth Scott Pugh, USN
Commanding Officer USS Whale (SSN 638)*

INTRODUCTION OF PRINCIPAL SPEAKER

*Captain C. H. Griffiths Jr., USN
Commander Submarine Squadron TWO*

PRINCIPAL SPEAKER

*Captain Emil D. Morrow, USN (Retired)
Commander Officer USS Whale (SSN 638)
February 1981 - March 1983*

BENEDICTION

Lieutenant Commander Bradford E. Ableson CHC, USN

DEPARTURE OF OFFICIAL PARTY

MUSIC

Navy Band Newport



EMIL D. MORROW

CAPTAIN
UNITED STATES NAVY (RETIRED)

COMMANDING OFFICER
USS WHALE (SSN 638)
February 1981 - March 1983

Captain Morrow was born and raised in Cleveland, Ohio. He graduated from the United States Naval Academy in 1964.

Captain Morrow spent a significant portion of his naval career in this area serving on seven New London based submarines. He served on the USS Croaker (SS 246) as Electrical Officer; USS Cobbler (SS 344) as Operations Officer; USS Gato (SSN 615) as a member of the commissioning crew and Weapons Officer; USS Sam Houston (SSBN 609) (Blue) as Engineer Officer; and the USS Philadelphia (SSN 690) as Executive Officer. He commanded USS Whale (SSN 638) from January, 1981 to March, 1983 and was the Commissioning Commanding Officer of USS Providence (SSN 719), the first vertical launch Tomahawk submarine in the fleet.

Ashore, Captain Morrow has served as a member of the Atlantic Fleet Nuclear Propulsion Examining Board; as a Deputy Squadron Commander of Submarine Squadron Two; and as the founding director of the Navy's Nuclear Field A School in Orlando, Florida.

Captain Morrow's senior officer tours were as Commander Submarine Squadron One; Deputy Director for Fast Attack Submarines in the Office of the Chief of Naval Operations; Chief of Staff, Battle Force, Seventh Fleet; and Plans, Policy and Operations Staff of the Chief of Naval Operations.

Captain Morrow's awards include: the Legion of Merit (3 awards), the Meritorious Service Medal (4 awards), the Navy Commendation Medal (3 awards), the Navy Achievement Medal (2 awards) as well as several unit and service awards including service in Southwest Asia during Operation Desert Storm.

Captain Morrow is married to the former Miss Rosemary Costello of Grand Island, Nebraska. They have three children: Lt Emil W. Morrow, SC, USN, Mrs Susan Elizabeth Grimes, and Stephen Decatur Morrow, a student at The George Washington University.



C. H. GRIFFITHS JR.

**CAPTAIN
UNITED STATES NAVY**

**COMMANDER
SUBMARINE SQUADRON TWO**

Captain Griffiths graduated from the United States Naval Academy in 1971. Following graduation, he attended Nuclear Propulsion Training at Mare Island, California and Idaho Falls, Idaho. In 1972 Captain Griffiths reported to USS QUEENFISH (SSN 651) where he participated in a Western Pacific deployment and a refueling overhaul. He then attended the Submarine Officer Advanced Course, earning the David Lloyd Award for excellence. Captain Griffiths next served on USS THOMAS JEFFERSON (SSBN 618)(BLUE), making Polaris Deterrent Patrols out of Guam. In 1977, Captain Griffiths was assigned as the Engineer Officer of USS PHILADELPHIA (SSN 690) in Groton, Connecticut. In 1980 he was assigned to the Atlantic Fleet Nuclear Propulsion Examining Board, and in 1983 Captain Griffiths reported as Executive Officer, USS BATFISH (SSN 681) in Charleston, South Carolina. He detached from BATFISH in 1985 to serve successive tours in Washington, D.C. as a member of the OPNAV staff and the Bureau of Naval Personnel.

Captain Griffiths assumed command of the USS PITTSBURGH (SSN 720) in 1988. Under his command, PITTSBURGH completed four successful deployments encompassing missions ranging from the Cold War to combat in Desert Storm. The last of these was an eventful surge deployment to the Mediterranean, during which PITTSBURGH conducted highly successful strike warfare attacks against Iraq.

Following his relief in March 1991, Captain Griffiths attended the Senior Officials in National Security course at Harvard University's Kennedy School of Government. He then reported to the staff of Naval Reactors in Washington, D.C., where he served for three years as Special Assistant to the Deputy Director.

Captain Griffiths assumed command of Submarine Squadron TWO at Groton, Connecticut in July 1994. Nicknamed "The Armada", SUBRON TWO consists of three separate classes of submarines and the deep diving, nuclear-powered submersible NR-1.

His decorations include the Legion of Merit, the Bronze Star, the Meritorious Service Medal (two gold stars), the Navy Commendation Medal (three gold stars), the Navy Unit Commendation, and the Meritorious Unit Commendation.

Captain Griffiths is married to the former Cynthia Bearden of Gales Ferry, Connecticut. Captain and Mrs. Griffiths live in Ledyard, Connecticut with their two sons, Brandon and Matthew.



KENNETH SCOTT PUGH

COMMANDER
UNITED STATES NAVY

COMMANDER OFFICER
USS WHALE (SSN 638)

Commander Pugh was born and raised in the southwest Louisiana town of Lake Charles. In 1972 he graduated from LaGrange Senior High School and entered the United States Naval Academy. After commissioning in 1976 he completed Naval Nuclear Propulsion training at Mare Island, California and at Idaho Falls, Idaho.

In early 1978 Commander Pugh reported to USS GREENLING (SSN 614) at Charleston Naval Shipyard. Following a refueling overhaul, GREENLING returned to her homeport in Groton, Connecticut in 1979. Commander Pugh served as an Engineering Division Officer and as Weapons Officer prior to detaching.

During 1981 to 1983, Commander Pugh attended Naval Postgraduate School at Monterey, California earning a Master of Science Degree in Physics.

In 1983, he completed submarine department head training prior to reporting to USS POLLACK (SSN 603) in San Diego, California as Engineer.

Commander Pugh served as a member of the Atlantic Fleet Nuclear Propulsion Examining Board in Norfolk, Virginia from 1986 until 1989. Remaining in Norfolk, he was assigned for 30 months as Executive Officer of USS FLYING FISH (SSN 673). During this period FLYING FISH earned the 1990 SUBLANT TOPTORP Award, the 1991 SUBRON SIX Battle Efficiency Award and a Navy Unit Commendation.

From March 1992 until June 1993, Commander Pugh served as Submarine Squadron Six Chief Staff Officer, also in Norfolk, Virginia.

Commander Pugh relieved as Commanding Officer USS WHALE (SSN 638) in January 1994.

Commander Pugh is authorized to wear the Meritorious Service Medal (with one gold star), the Navy Commendation Medal (with two gold stars) and the Navy Achievement Medal.

Commander Pugh is married to the former Rebecca Wallace of Louisa, Kentucky. They have three children, Lauren, Ross, and Ethan.

COMMAND AT SEA

PLANKOWNERS

OFFICERS

Commanding Officer.....CDR W. M. Wolff Jr., USN
Executive Officer.....CDR R. A. Harris, USN
Engineer Officer.....LCDR W. B. McAree II, USN
Operations Officer.....LT N. A. Heuberger, USN
Reactor Controls Officer.....LT B. A. Lojko, USN
Main Propulsion Assistant.....LT T. R. Conrey, USN
Weapons Officer.....LT C. K. Morse, USN
Sonar Officer.....LT C. L. Shoemaker, USN
First Lieutenant.....LT J. P. Houghton, USN
Diving Officer.....LTJG W. C. Stone, USN
Communications Officer.....LTJG J. H. Stein, USN
Supply Officer.....LTJG J. R. McNabney, SC, USN

CHIEF PETTY OFFICERS

Chief of the Boat - TMC(SS) Hoover

MMC(SS) Archambault	ICC(SS) Moody	QMC(SS) Wood
MMC(SS) Davidson	ETC(SS) Barich	RMC(SS) Wright
MMC(SS) Huckle	ETCS(SS) Rydzyski	QMCS(SS) Ziolk

ENLISTED

RM1(SS) Aleman, D.	EM2 Genus, J. L.	IC2 Pearson, W. A.
MM2 Allen, R. L.	MM1(SS) George, M. V.	SN Pedrick, J. J. Jr
ET2 Anderson, J. S.	MM2 Gerald, P. B.	YN3 Petrus, A.
STS3 Angun, J. M.	SD3(SS) Gist, W. Jr.	MM1(SS) Pittenger, K. F.
ET2 Ardinger, T. F.	EM2(SS) Goodwin, S. E.	FA Rasnick, D. W.
STS3(SS) Bannerman, C. A.	EM3 Gould, D. L.	MM2 Raymond, B. A.
CS3 Behn, R. A.	TM2(SS) Garvley, C. E.	MM1(SS) Reynolds, R. C.
ST1(SS) Bitterman, D. E.	SD3(SS) Gundayao, T. V.	TM1(SS) Rosin, D. E.
STS3 Bolden, T. J.	TM1(SS) Hadley, M. L.	SA Schroeder, D. F.
MM3 Braune, H. W.	ETR3 Holst, R. G.	ETR3 Sentell, D. K.
EN3 Brenno, M. G.	MM2 Janes, B. C.	ET1(SS) Smith, P. A.
MM2 Campbell, R. L.	CS1(SS) Jones, F.	ST1(SS) Starke, J. C.
SN Condon, R. L. Jr.	MM1(SS) Kelley, T. B.	ETN2 Steadman, W. B. Jr.
ETR3 Connal, G. R.	MM2 Keyes, D. C.	RM2 Stearns, G. W.
FTB2(SS) Crayne, F. J.	HM1 King, C. N.	EM2 Stein, M. E.
MM1(SS) DeCoster, C. L.	MM1(SS) Knutson, D. M.	EM1(SS) Strickland, W. E.
CS1(SS) DeLong, L. R.	MM1(SS) Koranek, S. D.	IC1(SS) Swartz, R. A.
IC1(SS) Dennis, D. E.	QM3(SS) Leafson, D. D.	SK2 Thomas, C. B.
STS3 Devaughn, R. A.	QM2(SS) Lynch, B. J.	IC1(SS) Tillman, F. L.
ET1(SS) Dorlig, L. K.	SN Maitland, W. H.	EM1(SS) Uphold, B. L.
IC1(SS) Dougherty, J.	STS3 Mandaro, A. J.	RMSN Uribe, I. D.
STS3 Erickson, J. O.	MM1(SS) Marseau, K. P.	MM3 Vanoverloop, G. D.
MM1(SS) Foster, L.	MM2 McElroy, T. G.	ETR2 Watson, M. T.
YN1(SS) Freed, R. M.	ST1(SS) Moon, G. W.	TM1(SS) Weatherwax, J. A.
FTG3 Fry, H. L.	ETN2 Moran, B. C.	EM2 West, G. E.
ETR3 Gabriel, R. B.	MM2(SS) Neiveen, J. J.	ICFA Wiesner, C. J.
MM2 Gagne, J. J.	FA Northfield, E.	ETR2(SS) Williams, T. E.
FA Garcia, A. A.	SN Parker, R. A.	

INACTIVATION CREW

OFFICERS

Commanding Officer.....CDR K. S. Pugh, USN
Executive Officer.....LCDR G. W. Schwenk, USN
Engineer Officer.....LCDR M. T. Poirier, USN
Navigator.....LCDR M. C. Quinn, USN
Supply Officer.....LT R. W. Bichard, SC, USN
Combat Systems Officer(R).....LT M. Palm, USN
Combat Systems Officer (D).....LT R. D. Gunther, USN
Sonar Officer.....LT B. M. Spano, USN
Main Propulsion Assistant.....LT S. R. Venton, USN
Damage Control Assistant.....LT B. A. Meffert, USN
Communications Officer.....LT P. Miller, USN
Chemistry Radiological Assistant.....LT C. W. Sebrell, USN
Electrical Officer.....LTJG P. D. LaBarre, USN
Reactor Controls Officer..... LTJG J. D. Weber, USN

CHIEF PETTY OFFICERS

Chief of the Boat - MMCM(SS) Alexander, C. H.

STSC(SS) Adams, R. J.	EMC(SS) Bennett, W. H.	ETC(SS) Leighton, D. A.
MMC(SS) Aschraft, K. A.	MMCS(SS) Dahl, D. K.	ETC(SS) Miller, R. L.
MMCS(SS) Beech, E. D.	EMC(SS) Graham, B. W.	MMC(SS) Orlando, M. R.
TMC(SS) Beilharz, R. D.	FTC(SS) Hammer, D. L.	QMC(SS) Richards, J. M.

ENLISTED

ET3(SU) Abraham, B. M.	MS2(SS) Gwatney, R. L.	ET3(SS) Reed, D. L. Jr.
MM2(SS) Allen, G. L. Jr.	MM1(SS) Hamilton, A. G.	FT3(SS) Reeves, G.
HM1(SS) Bailey, S. M.	MM1(SS) Hammon, K. F.	MM1(SS) Rhode, M. V.
FT3(SU) Baranowski, F. J.	MS3(SS) Hill, J. L. III	TM2(SS) Rier, D. T.
MS3(SS) Barczykowski, K. R.	STS3(SS) Hoag, M. R.	MM2(SS) Robinson, B. J. Jr.
MMFA(SU) Bechtold, M. D.	MM2(SS) Holmes, G. M.	ET3(SU) Rogers, K. W. Jr.
MS1(SS) Bedard, R. P.	MM3(SS) Houseknecht, E.E. II	ET3(SS) Rolfe, D. W.
STS2(SS) Bishop, J. S.	MM3(SS) Impastato, B. J.	MM2(SS) Ruiz, C.
STS2(SS) Blake, D. Q.	FT1(SS) Irish, M. S.	EM3(SS) Schmidt, E. C.
MM2(SU) Bond, S. A.	STS3(SS) Jacobs, A. L.	EM2(SS) Shott, E. R.
RMSA(SU) Boucher, B. J.	SKSN(SS) Johns, J. D.	MM2(SS) Sines, J. L.
SK1(SS) Briggs, T. R.	YN3(SS) Johnson, C. D.	STS1(SS) Sennett, B. D.
YNSA(SU) Brown, A. L.	SKSA(SU) Johnson, R. L.	ET3(SS) Smith, J. A.
ET1(SS) Burgess, B. J. Jr.	MM2(SS) Kieffer, T. M.	MM1(SS) Stevenson, N. J.
TMSN(SS) Bustillos, B. R.	ET3(SS/DV) Kuhnert, C. J.	RMSA(SU) Stewart, R. B.
MM2(SS/DV) Cardin, J. P.	STS1(SS) Kviz, D. A.	MM2(SS) Stewart, J. D.
MM3(SS) Carroll, J. E.	IC2(SS) Lambert, G. J. Jr.	MS2(SS) Stewart, J. G.
MM2(SU) Cherryholmes, D. M.	IC1(SS) Leonard, G. M.	MM1(SS) Sweet, J. R.
STS2(SS) Cribbs, J. T.	ET2(SS) Lindholm, G. G.	MM2(SU) Syverson, B. M.
FT3(SS) Cullen, S. T.	FT3(SU) Lupo, S. C.	MM2(SS) Taylor, G. L.
EM2(SS) Czarniak, K. G.	MM2(SS) Mackanos, P. J. III	RM2(SS) Tonkin, R. J.
IC3(SS) Dailey, M. B.	QM3(SS) Manfred, S. W.	MM2(SS) Torborg, G. N.
EM3(SU) Davis, L. D. II	MS3(SS) Mann, D.	MM2(SS) Turner, J. N.
YN1(SS) Day, E. N.	RM1(SS) Martin, D. W.	SR(SU) Varone, S. A.
MM1(SS) Deluna, T. A.	MM2(SS) Masserant, K. C.	MM3(SS) Velasquez, A.
SN(SS) Domingo, V. D.	MM2(SS) McBeain, J. A.	ET1(SS) Vogt, G. S.
ET1(SS) Dygert, K. J.	STS2(SS) McLaughlin, D. L.	EM2(SS) Vogtman, S. C.
TM2(SS) Eckstrom, M. K.	TMSN(SS) McLaughlin, N.	ET1(SS) Walker, D. C.
ET3(SS) Ellis, D. J.	STS3(SS) Miller, K. L.	ET2(SS) Webb, J. F.
QM1(SS) Englehart, J. J.	MM1(SS) Mitchell, R. K. II	STS2(SS) Weedling, J. A.
STS3(SS) Finnerty, T. D.	STS3(SS) Murphy, P. J.	MM2(SS) Wheeler, S. M.
RM2(SS) Fortune, N. S.	SK3(SS) Murphy, T. D.	TM1(SS) White, S. T.
RM1(SS) Fowler, T. L.	MM3(SS) Ostrow, T. M.	IC3(SS) Whitted, T. E.
EMFN(SU) Frank, J. C.	EM1(SS) Parker, S. L.	SR(SU) Wilhelm, W. D.
EM2(SS) Garrett, J. M.	SN(SS) Puder, J. J.	RM3(SS/DV) Wilkerson, M. D.
MM2(SS) Grubaugh, M. G. II	STS3(SS) Quintana, B. M.	EM1(SS) Wiseman, A. R.



USS WHALE (SSN 638)

Keel Laid - General Dynamics Corporation, Quincy, MA.....27 May 1964
 Launched - General Dynamics Corporation, Quincy, MA.....14 Oct 1966
 Commissioned - General Dynamics Corporation, Quincy, MA.....12 Oct 1968
 Ship's Sponsor - Mrs. Katherine Hattic Long

CHARACTERISTICS

Length.....292 Feet
 Beam.....32 Feet
 Submerged Displacement.....4,630 Tons
 Speed.....Faster than 25 Knots
 Diving Depth.....Deeper than 800 Feet
 Crew Complement.....14 Officers, 126 Enlisted
 Armament.....Mk 48 ADCAP Torpedoes, Harpoon and Tomahawk Cruise Missiles

UNIT AWARDS

Navy Unit Commendation.....1969
 Meritorious Unit Commendation.....1970
 Meritorious Unit Commendation.....1970
 Meritorious Unit Commendation.....1971
 Battle "E" Award - COMSUBDIV FOURTY-TWO.....1971
 Battle "E" Award - COMSUBRON TWO.....1974
 Meritorious Unit Commendation.....1974
 Battle "E" Award - COMSUBRON TWO.....1975
 Anti-Submarine Efficiency "A" Award - COMSUBRON TWO.....1976
 Battle "E" Award - COMSUBDEVRON TWELVE.....1982
 Supply "S" Award - COMSUBRON TEN.....1989
 Supply "S" Award - COMSUBRON TEN.....1990
 Engineering "E" Award - COMSUBRON TEN.....1990
 Communications "C" Award - COMSUBRON TEN.....1990
 Meritorious Unit Commendation.....1990
 Battle "E" Award - COMSUBRON TEN.....1990
 Medical "M" Award - COMSUBRON TWO.....1992
 Deck Seamanship "D" - COMSUBRON TWO.....1993
 Deck Seamanship "D" - COMSUBRON TWO.....1994



HISTORY OF USS WHALE (SSN 638)

USS WHALE (SSN 638) was named in commemoration of the submarine USS WHALE (SS 239), one of the first fleet-type submarines of World War II.

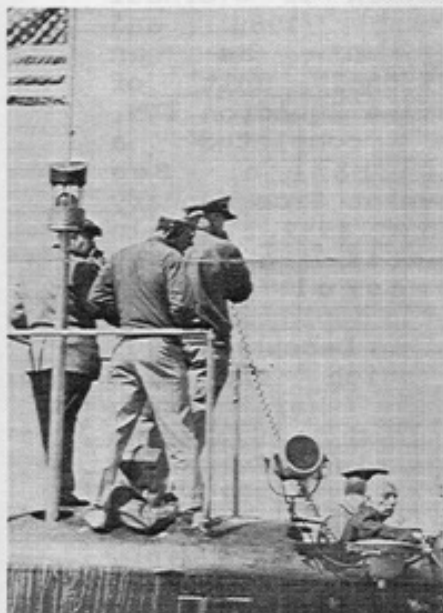


CDR W. M. WOLFF Jr., USN

The keel for the present WHALE was laid on 27 May 1964 at Quincy Division of General Dynamics Corporation, Quincy, Massachusetts. She was launched on 14 October 1966 and was commissioned on 12 October 1968. Her sponsor was Mrs. Katherine Long, wife of Senator Russell Long of Louisiana.



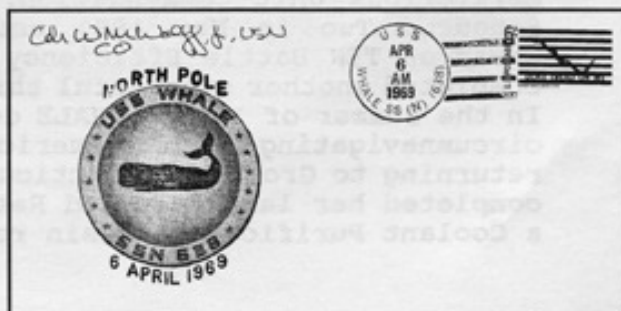
COMMISSIONING WITH SHIP'S SPONSOR MRS. KATHERINE LONG



VADM HYMAN G. RICKOVER (FAR RIGHT) AFTER COMPLETION OF BUILDER'S SEA TRIALS

In January of 1969 WHALE participated in Arctic Exercise SUBICEX 1-69. Whale surfaced at the North Pole on 6 April 1969, sixty years to the day and hour after Admiral PERRY arrived there. The ship was awarded the Navy Unit Commendation for this operation. During 1970 the ship conducted a deployment for which she was awarded her first of many Meritorious Unit Commendations. WHALE was deployed to the Mediterranean Sea to support the U.S. Sixth Fleet during the Jordanian conflict and was awarded a second Meritorious Unit Commendation for this operation. WHALE deployed in the summer of 1971 and was awarded a third Meritorious Unit Commendation. She deployed again in the spring of 1972. Whale entered the Electric Boat Division of General

Dynamics, Groton, Connecticut in August 1972 for a non-refueling overhaul.



ENVELOPE POST MARKED AND SIGNED BY COMMANDER WOLFF ON 6 APRIL 1969 AT THE NORTH POLE

WHALE completed overhaul in October 1973. In May 1974 WHALE commenced a six month deployment to the Mediterranean Sea. WHALE received her fourth Meritorious Unit Commendation during this deployment. Upon return to Groton, Connecticut WHALE received the Submarine Squadron TWO Battle Efficiency "E" Award for 1974. In September 1975, WHALE commenced a six month deployment to the Mediterranean Sea and received her second straight Submarine Squadron TWO Battle Efficiency "E" Award. WHALE conducted a 22 month refueling overhaul in Portsmouth Naval Shipyard during September 1976 - July 1978.

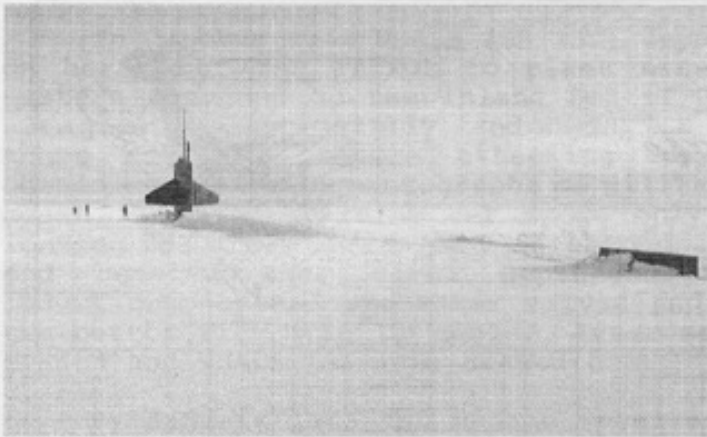
After completion of overhaul WHALE conducted a five month deployment to the Mediterranean Sea from April to September 1979. In July through September 1980 Whale underwent the first Selected Restricted Availability to be conducted at a site remote from the shipyard. In July of 1982 Whale departed for a five month deployment to the Mediterranean Sea. In September 1982 WHALE commenced a deployment to the North Atlantic. Whale was awarded the Submarine Development Squadron TWELVE Battle Efficiency "E" Award for 1982. In 1983 she completed her second Selected Restricted Availability. In the summer of 1983 WHALE departed on a five month North Atlantic and Mediterranean Sea deployment, returning to Groton, Connecticut in January 1984. In April 1985 WHALE completed another North Atlantic Deployment. WHALE entered Puget Sound Naval Shipyard, Bremerton, Washington, in December 1985, for a non-refueling overhaul.



EMERGENCY BLOW TEST 1987 IN PUGET SOUND, WASHINGTON

F o l l o w i n g completion of overhaul in May 1988 and assignment as an operational unit of Submarine Squadron TEN, Whale completed a Mediterranean Sea deployment from January to June 1989. Whale completed a very successful North Atlantic deployment from August to December 1990, for which she was awarded her fifth

Meritorious Unit Commendation. WHALE transferred to Submarine Squadron Two in May 1991 and was awarded the last Submarine Squadron TEN Battle Efficiency "E" Award. In October 1991 WHALE completed another successful three month North Atlantic deployment. In the summer of 1992, WHALE departed on a five month deployment, circumnavigating South America in support of UNITAS XXXIII, returning to Groton, Connecticut in November 1992. In 1993, WHALE completed her last Selected Restricted Availability and completed a Coolant Purification Resin replacement.

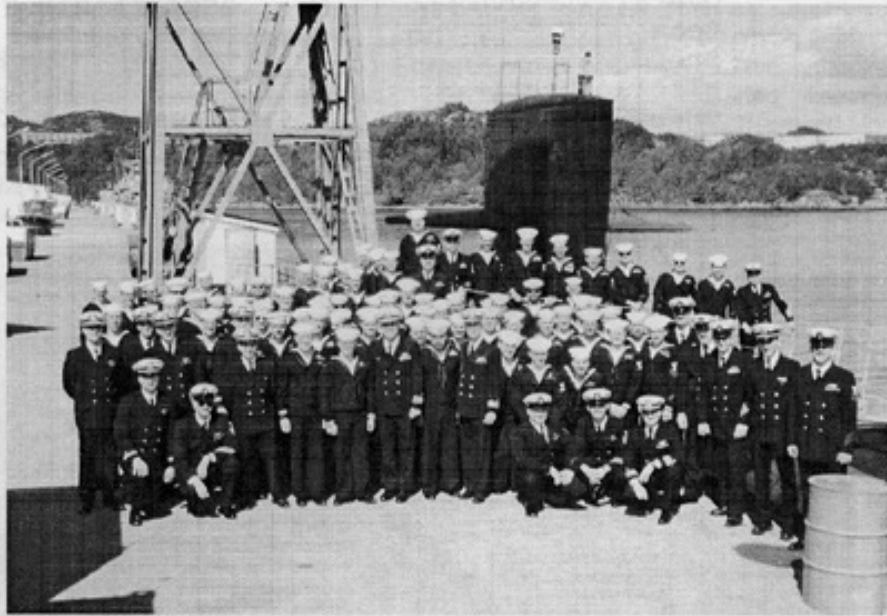


NORTH POLE 16 APRIL 1994

In 1994 USS WHALE deployed to the Arctic with HMS TRENCHANT in support of combined United States and Royal Navy testing of submarine equipment as well as collection of environmental data in the Polar region. JOINTSUBICEX 1-94 saw WHALE's second North Pole surfacing on 16 April 1994, 25 years and 10 days after her first Polar surfacing in 1969. Following visits to

Norway, Germany and Scotland, WHALE returned to SUBRON TWO in July 1994.

In May 1995 WHALE will deploy to the U.S. Central Command area of operations before transiting the Indian and Pacific Oceans enroute to inactivation at Puget Sound Naval Shipyard, Bremerton, Washington, in October 1995.



PORT VISIT NORWAY, 1994

U. S. S. Whale

SOMEWHERE IN THE SEVEN SEAS



HISTORY OF USS WHALE (SS 239)

The keel for the WHALE (SS 239) was laid on 28 June 1941 at the Navy Yard, Mare Island, California. She joined the Navy on 1 June 1942, with LCDR J. B. AZER, USN, as her first Commanding Officer.

CHARACTERISTICS

Overall Length	312 Feet
Beam	27 Feet
Speed	20 Knots
Displacement	1525 Tons
Crew Complement	8 Officers and 72 Men



USS WHALE (SS 239) UNDERWAY

In October 1942 WHALE (SS 239) departed Pearl Harbor, Hawaii on her first WAR PATROL to plant mines in the KII SUIDO, the eastern entrance to the Inland Sea of Japan. Three mine fields were planted successfully, and WHALE (SS 239) spent several days in these dangerous waters attacking targets of opportunity and obtaining periscope photographs of military installations along the coast, at times raising her scope only 500 yards offshore. In leaving the area, WHALE (SS 239) encountered a CHIDORI patrol craft and received her first depth-charging, which flooded the inductions, opened sea water valves and sent her plunging toward the bottom with a 20° up angle. After several hours the enemy was evaded and WHALE (SS 239) headed home.

By January 1943 the damage received on the first WAR PATROL was repaired and WHALE (SS 239) departed Pearl Harbor, Hawaii for her second WAR PATROL, off the coast of the MARSHALL ISLANDS. During this WAR PATROL a freighter and two troopships were sunk and a tanker was damaged. Four freighters were sunk and a seaplane tender damaged by WHALE (SS 239) on her third and fourth WAR PATROLS off the SAIPAN, MARIANAS ISLANDS. In August 1943 WHALE (SS 239) conducted her fifth WAR PATROL, again in the MARIANAS ISLAND area, and sunk the 7149 TON aircraft ferry MARUTO MARU.

WHALE (SS 239) sailed for her sixth WAR PATROL in the forward area, off the BONIN ISLANDS. Night attacks on a convoy netted WHALE (SS 239) two more freighters. On her seventh, eighth, and ninth WAR PATROLS, WHALE (SS 239) continued to inflict heavy damage on the Japanese Merchant Fleet. On completion of her tenth WAR PATROL, a photo reconnaissance of OKINAWA was conducted in preparation for the forthcoming invasion, and WHALE (SS 239) was routed to the Navy Yard at Mare Island, California for her second major overhaul.



USS WHALE (SS 239) CREW FOLLOWING 8TH WAR PATROL

WHALE (SS 239) completed overhaul in the spring of 1945 and after a training workup departed Guam in July to conduct Lifeguard Services off the coast of Japan in support of Carrier and B-29 strikes against the Japanese home islands. Fifteen aviators were rescued and WHALE (SS 239) was still at sea when the WAR ended.

A few days later she departed for New York, by way of Saipan and Pearl Harbor, Hawaii, with the enviable record of eleven successful WAR PATROLS and 57,716 TONS of Japanese shipping sunk.

In January 1947 WHALE (SS 239) was placed out of commission in the Atlantic Reserve Fleet, berthed at Submarine Base, New London, Connecticut. On 1 March 1960 she was struck from the Navy list and sold for scrap.

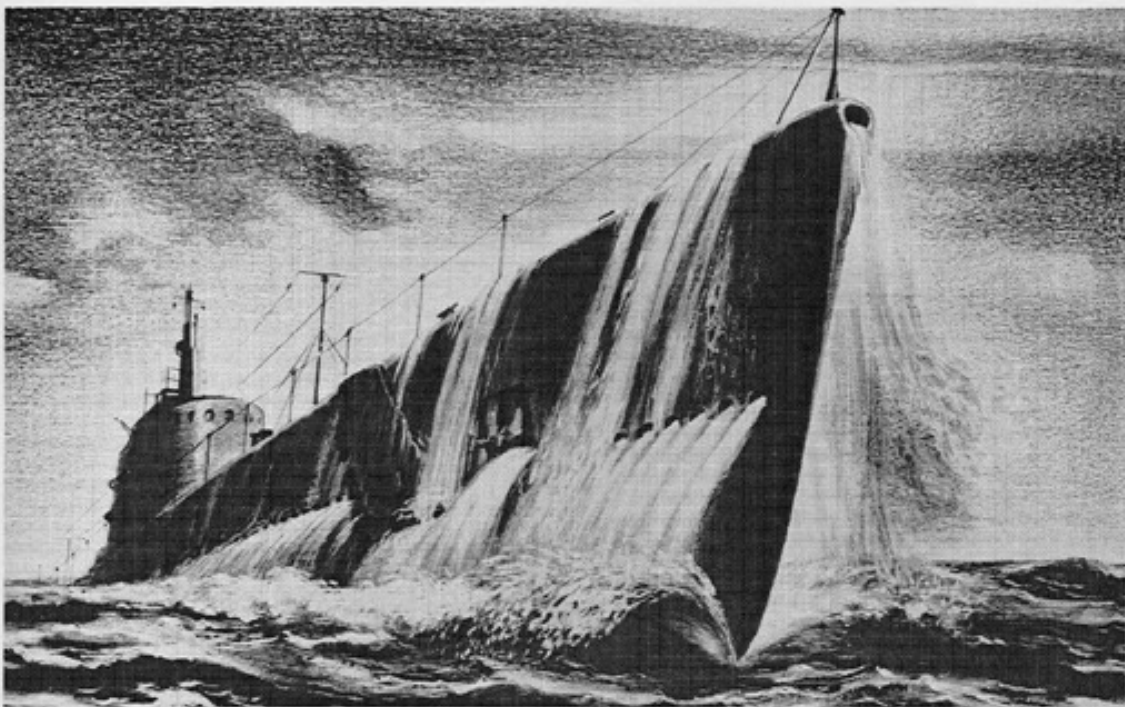


BETTY WHALE USS WHALE (SS 239) MASCOT

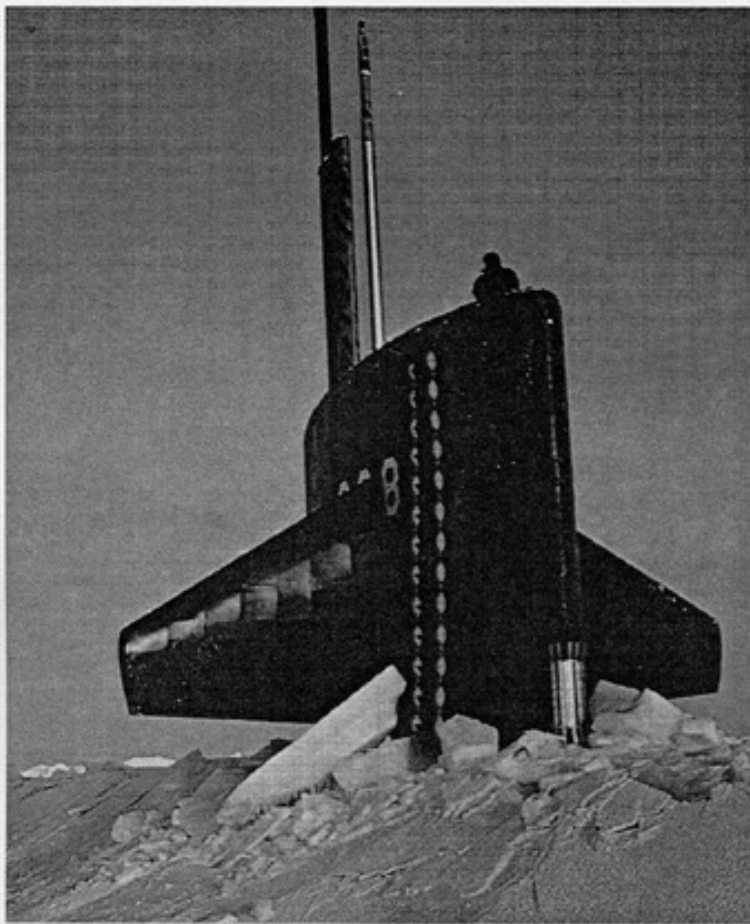
SUNK DURING WORLD WAR II

BY USS WHALE (SS 239)

<u>DATE</u>	<u>NAME OF VESSEL</u>	<u>TYPE</u>	<u>TONNAGE</u>
13 Jan 1943	Iwashiro Maru	Cargo	3,550
17 Jan 1943	Heiyo Maru	Passenger-Cargo	9,815
27 Jan 1943	Shoan Maru	Passenger-Cargo	5,624
23 Mar 1943	Kenyo Maru	Cargo	6,486
26 May 1943	Shoei Maru	Cargo	3,580
8 Aug 1943	Naruto Maru	Aircraft Ferry	7,149
16 Jan 1944	Denmark Maru	Cargo	5,870
9 Apr 1944	Honan Maru	Cargo	5,401
6 Oct 1944	Akane Maru	Tanker	10,241
9 Vessels			57,716 Tons



USS WHALE (SS 239) - UNKNOWN ARTIST



USS WHALE (SSN 638) 6 APRIL 1969

From CO WMS TRENCHARD
To CO USS WMAVE
I enjoyed working with you.
Philip Mathias 15 April 94

OS DDP-9 DET RIGED B-FORM 50