

USS Shark (SS 174)



Commander Submarine Force, U.S. Pacific Fleet

USS SHARK (SS 174)

February 11, 1942 - 59 Men Lost

After having transported Admiral Hart and other officials from Manila to Surabaya on her first patrol, SHARK, commanded by LCDR L. Shane, Jr., departed on January 5, 1942 for her second war patrol. She saw a torpedo, fired at her by an enemy submarine on January 6.

In anticipation of a possible enemy attack at Ambon (Amboina), COMSUBASIATIC told SHARK to contact Dutch submarines at the harbor entrance of that island. On January 25, SHARK was advised that heavy air raids on Ambon might indicate an enemy landing force moving toward the island.



USS Shark (SS 174)



USS Shark (SS 174)

Two days later SHARK was ordered to take station as part of a submarine group reconnoitering a major enemy move south through Molukka passage. On January 29, because another move toward Ambon was indicated, SHARK was ordered to cover the passage to the east of Lifoematola. The next day this was enlarged to include the area to Bangka Passage. On February 2 SHARK reported to Surabaya that she had been depth charged 10 miles off Tifore Island and that she had missed on one torpedo attack.

Five days later SHARK reported an empty enemy cargo ship heading northeast. In answer to these messages, Surabaya pointed out that such transmissions contained little information of use in appraising the situation, and that they might very possibly reveal to the enemy a position to avoid. No further messages were received from SHARK.

She was told on February 8 to proceed to Makassar Strait via the north coast of Celebes, and later was told to report information. Nothing further was heard from SHARK and on March 7 she was reported as presumed lost.

A Japanese report of antisubmarine attacks available now records at least three of which might have been on SHARK. One was east of Manado on northern Celebes on February 11, 1942; the second was north of Kendari on the southeast coast of Celebes on February 17, 1942; the third was east of Kandari on February 21, 1942. Also, in 1944, a Japanese press release claimed that an enemy subchaser rammed a U.S. Submarine in Manipa Strait in February 1942. No mention is made of this attack in official Japanese reports, but their reports were notoriously inaccurate and incomplete, especially during the early part of the war.



USS Shark (SS 174)



Photos of USS Shark (SS 174) tribute in Oklahoma

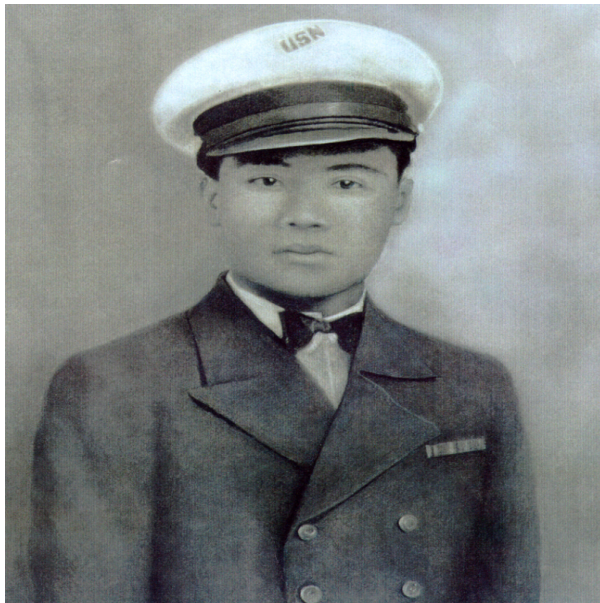
Since Dutch and English submarines were operating in the area patrolled by SHARK, it is impossible at this time to determine whether any or all of the above mentioned attacks were survived by submarines operating with our Atlantic Fleet. Loss of SHARK to an enemy minefield is deemed improbable, since the enemy was on the offensive at this time and would naturally hesitate to lay mines in the path of his advance down the Strait of Makassar. Thus indications point to the probability that SHARK was lost through enemy depth charge attack; however, the specific attack responsible for the loss cannot be determined. The one on February 11 off Menado is thought most likely, since SHARK had been ordered to northern Celebes.

Sailors Lost On USS SHARK I (SS 174) 2-11-1942

Bellard, Theodore Allen MM1	Blanchard, Walter Raleigh CTM	Bolton, John Alden RM1	Brannan, Thomas Leo S1
Byus, Grady "G", Jr. MM1	Cassidy, Earl LTJG	Cooley, John Paul MM2	Crawford, Billy Brant F3
Croft, Albert Edward EM1	Dawson, William Thomas EM2	Denby, Edwin, Jr. LTJG	Dillen, Roscoe F., Jr. LTJG
Ejaype, Paulino OS1	Estes, Roland Ashby EM1	Evans, Ferdinand Alois MM2	Evans, Truman Floyd TM1
Fabra, Agapito OS3	Farrell, Fred Howell TM1	Fruit, Albert David MM1	Gilman, Merrill Ray MMA
Giminez, Pedro SC1	Glass, Lawrence Carlton S1	Iverson, James Andrew F1	Jeffreys, Romie Lloyd CMM
Johnston, James Edward F2	Jones, Clifford Earl TM1	Lester, Jesse Augustus PHM2	Lidgerding, William Charles RM2

USS Shark (SS 174)

Loughlin, Thomas TM2	Lund, Arnold Raymond MM1	Markin, Loran Robert F2	MC Elroy, Rex Edgar EM2
MC Kinney, Kenneth Ernest EM2	Miller, Robert Francis F2	Moran, Arthur Patrick CMM	Morris, Fred Joseph SM1
Myer, Warren Hasting MM2	Pechacek, Ermin Josep SM2	Perkins, Avery Evande S1	Pettit, Robert Lee CMMA
Philabert, Frank Florestine ENS	Pilgram, Edward Walte CEMA	Polidori, Bennie John EM1	Sandmann, Karl Lothar Y2
Shmitt, Henry Louis MM2	Shane, Louis, Jr. LCDR	Smith, John Howell CEM	Smith, Thayne Charles TM2
Spilman, Thomas Punchard RM3	Stephens, Robert Houston S1	Striegler, Herman Fredrick EM1	Thew, Richard Ridley FC1
Tubre, Henry Oran S2	Turoczy, John Alfred SC1	Warren, Roland Henry MM2	White, James Kenneth GM1
Worsham, John Murry TM3	Yanks, Charles Robert SM2	Zeorlin, Harold TM2	



Photos of OS1 Paulino Ejaype graciously provided by his daughter, Mrs. Millie Williams