

COMMISSIONING



Puget Sound Naval Shipyard

Bremerton, Washington

27 April 1968



THE COMMISSIONING CEREMONY marks the acceptance of a ship as a unit of the United States Navy. At the moment of breaking the commissioning pennant, USS PUGET SOUND becomes the responsibility of the Commanding Officer, who, together with the ship's officers and men, has the duty of making and keeping her ready for any service required by our nation in peace or in war.

The commissioning pennant is believed to date from the 17th century, when the Dutch were at war with the English. The Dutch Admiral TROMP hoisted a broom at his masthead to indicate his intention to sweep the English from the seas. This gesture was answered by the English Admiral who hoisted a horsewhip, indicating his intention to subdue the Dutch. The English emerged victorious. Since then, all nations have adopted the narrow "coachwhip" pennant as a distinctive mark of a warship.

The United States Navy commissioning pennant is blue at the hoist with a union of seven white stars, and a horizontal red and white stripe at the fly. In lieu of a commission pennant, flagships fly the personal flags of embarked flag officers.

Until now, the PUGET SOUND has been merely hull and machinery. With the manning of this ship by her officers and crew, she will be imbued with a dedication to serve this nation in the proud tradition of those ships and Navymen who have preceded her.

UNITED STATES SHIP
PUGET SOUND (AD-38)
DESTROYER TENDER



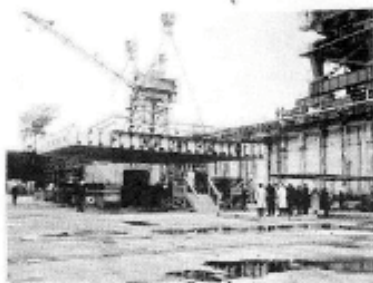
Built by
PUGET SOUND NAVAL SHIPYARD
Bremerton, Washington



Keel Laid15 February 1965
Launched16 September 1966
Christened16 September 1966
Commissioned27 April 1968

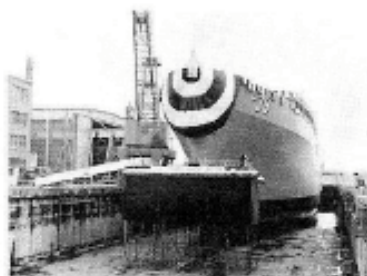
The Construction Period ...

KEEL LAYING
15 FEBRUARY 1965



1966

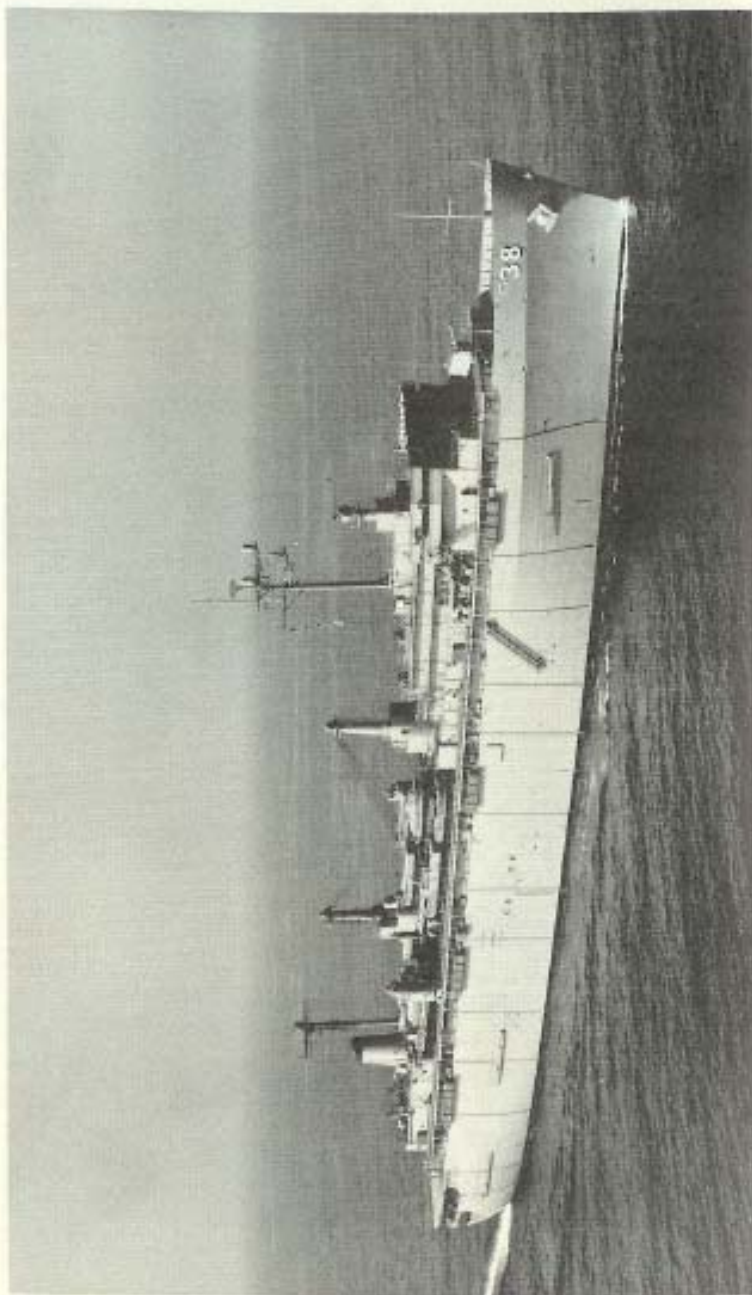
CHRISTENING
16 SEPTEMBER 1966



COMMISSIONING
27 APRIL 1968

Statistics ...

Overall Length	643 feet
Beam.....	85 feet
Displacement (Gross)	20,260 tons
Draft Full Load (Mean)	22 feet 6 inches
Speed.....	20 knots
Armament.....	one 5"/38 caliber Single mount MK 30
Complement.....	135 Officers 1671 Enlisted men



USS PUGET SOUND (AD-38)

Mission and Capabilities of the Ship . . .

USS PUGET SOUND, the latest ship to join the growing forces of tomorrow's Navy, represents a new class of destroyer tender with capabilities far surpassing the potential of earlier vessels entrusted with her mission. Displacing 20,260 gross tons with an overall length of 643 feet and a beam of 85 feet, she is nearly 5,000 tons heavier, 100 feet longer, and 36 feet wider than the previous class of tender now serving the fleet.

Her high pressure boilers generate sufficient steam to heat a city of 10,000 people or furnish 20,000 shaft horsepower to her propulsion gear. PUGET SOUND's four generators provide an output capacity of 10,000 kilowatts of electric power sufficient to light a city of 50,000. Her evaporators, producing 200,000 gallons of fresh water daily, could supply the needs of a city of 8,000.

In keeping with the newer generation of warships which will serve our future Navy, PUGET SOUND's mission will be to repair and furnish logistical support not only to destroyers and destroyer-escorts, but to the latest nuclear powered guided missile frigates.

Because support of a modern Navy imposes a new generation of skills, PUGET SOUND is admirably fitted to meet this need. Her repair facility, charged with the maintenance of nuclear propulsion as well as conventional machinery, is equipped with an extensive radioactive chemistry laboratory containing the latest analytical apparatus. Also aboard the PUGET SOUND is a complete facility for repair and calibration of virtually every type of nuclear reactor instrument, ship's communication gear, radar, and navigation equipment.

Major repairs to heavy equipment will be facilitated by two 30 ton capacity cranes located amidships supplemented by two 3½ ton traveling cranes located outboard on each side of the ship.

Supporting the repair effort is the Supply Department which will carry an inventory of 60,000 repair parts and materials with a value in excess of 1.5 million dollars. These will be stored in 65 storerooms whose total capacity constitutes 63,370 cubic feet, or sufficient to accommodate 70 automobiles.

Big, versatile, and capable, PUGET SOUND is amply equipped to embrace whatever challenges the future may bring.

Upon completion of fitting out in August 1968, PUGET SOUND will be assigned to the Atlantic Fleet. With arrival at her homeport in Newport, Rhode Island, she will become the Flagship for Commander Cruiser-Destroyer Force, United States Atlantic Fleet.

The First PUGET SOUND . . .

USS PUGET SOUND (CVE-113) was built by the Todd Pacific Shipyards Incorporated, Tacoma, Washington, and was launched on 30 November 1944. She put to sea on 6 July 1945. Following shakedown and training cruises, she joined the Fifth Fleet on 3 October 1945 lending air support to the occupation of the Japanese islands of Kyushu and Honshu.

After operating in support of the occupation forces in Japan, PUGET SOUND was detached from the Fifth Fleet for service with the Seventh Fleet. In December 1945 she reported to Commander, Air Force Pacific Fleet for duty ferrying aircraft from the Pacific Theatre. In January 1946 she returned to her homeport in San Diego for assignment as an aircraft transport between San Diego, Pearl Harbor, and Guam.

She was decommissioned on 18 October 1946, and was placed in the Pacific Reserve Fleet at Tacoma, Washington. On 13 January 1947 her ensign was presented by the Commandant, Thirteenth Naval District to the State of Washington in ceremonies held at the State Capital in Olympia.

PUGET SOUND remained in the Reserve Fleet until her name was stricken from the Navy List on 1 June 1960, and she was subsequently sold for scrap.



LYNDON B. JOHNSON
President of the United States



HONORABLE
PAUL R. IGNATIUS
Secretary of the Navy



THE SECRETARY OF THE NAVY
WASHINGTON

26 April 1968

Dear Captain Jacobs:

Congratulations on your new command and best wishes to you, your officers and men on the commissioning of USS PUGET SOUND (AD-38).

It is your privilege to command one of the finest ships of our new Navy. The latest technical advances in design and equipment for service to the destroyers of the fleet have gone into the construction of PUGET SOUND. Of even greater importance, however, is the "can-do" spirit of readiness and ability to handle any task, carried on through the years by PUGET SOUND's proud predecessors. You and your ship inherit a high tradition; I am confident that you will maintain and enhance it.

Although a navy is only as good as its ships, it is equally true that a ship can only be as good as her crew. I know that, under the guidance and professional example of you and your officers and petty officers, PUGET SOUND will achieve the highest standards of devotion to duty.

Sincerely yours,
Paul R. Ignatius
PAUL R. IGNATIUS

Captain Richard B. Jacobs, USN
Prospective Commanding Officer
USS PUGET SOUND (AD-38)
Puget Sound Naval Shipyard
Bremerton, Washington 98314



ADMIRAL THOMAS H. MOORER, USN
Chief of Naval Operations



CHIEF OF NAVAL OPERATIONS

26 April 1968

Dear Captain Jacobs,

Please accept my sincere best wishes to you, your officers and men on the commissioning of USS PUGET SOUND (AD-38). May your tour of duty be rewarding and challenging.

Your new ship, designed for optimum performance in keeping the Navy's destroyer force in fighting trim, is one of the most advanced of her kind. Equipped with the most modern tools and instruments, she will be an important addition to the free world's seapower and will contribute appreciably to the combat readiness of our fleet.

The heart and soul of your ship, however, will be the sailors who man her. Admiral Arleigh Burke has reminded us that "America can make every product we need for the preservation of freedom; only men can make America." Only men, guided by example and the spirit of leadership, can carry forward the Navy tradition of "service to the fleet." I am sure that you who serve in PUGET SOUND will develop the highest proficiency in this proud service.

On behalf of the Navy, I welcome PUGET SOUND to the fleet. May every good fortune be yours in the voyage ahead.

Sincerely,

T. H. MOORER
Admiral, U.S. Navy

Captain Richard B. Jacobs, USN
Prospective Commanding Officer
USS PUGET SOUND (AD-38)
Puget Sound Naval Shipyard
Bremerton, Washington 98314



ADMIRAL EPHRAIM P. HOLMES, USN
Commander In Chief U.S. Atlantic Fleet

COMMANDER IN CHIEF, ATLANTIC
AND U.S. ATLANTIC FLEET



NOFPOLE, VIRGINIA 23511

10 April 1968

Dear Captain Jacobs,

Upon the commissioning of USS PUGET SOUND (AD 38) I extend to you, your officers and crew my congratulations and best wishes.

The capabilities of PUGET SOUND are of real significance and her mission will be one of great importance to the Navy. During building and outfitting you have had the insight of what has gone into this fine ship and now, upon her commissioning, will have the rewarding experience of bringing PUGET SOUND into the active fleet and the execution of the duties for which she is designed to perform.

You are privileged in being the first Commanding Officer of PUGET SOUND. It is a challenge which few naval officers are so fortunate as to receive. The tone of the ship and the formulation of her reputation in the Fleet will be set by you and the commissioning crew. This challenging assignment will require your finest attention, leadership, and devotion to duty.

I look forward to welcoming PUGET SOUND to the Atlantic Fleet.

Sincerely,

E. P. HOLMES
Admiral, U.S. Navy

Captain Richard P. Jacobs, U.S. Navy
Prospective Commanding Officer
USS PUGET SOUND (AD 38)
Puget Sound Naval Shipyard
Bremerton, Washington 98314



Commander Cruiser-Destroyer Force,
U. S. Atlantic Fleet
REAR ADMIRAL
CLYDE J. VAN ARSDALL, JR., USN

Clyde James Van Arsdall, Jr., was born in Indianola, Mississippi, on July 22, 1913, and is the son of Mrs. Clyde J. (Ida Barnard) Van Arsdall and the late Mr. Van Arsdall. He was graduated from Indianola High School in 1930, and entered the U. S. Naval Academy. He was graduated and commissioned as an Ensign May 31, 1934, and by subsequent promotions attained the rank of Rear Admiral, effective July 1, 1962.

After graduation from the Naval Academy, he was assigned to the USS INDIANAPOLIS, and served from July 1934 until April 1935 as a junior officer (communications duty) in that cruiser, Flagship of Commander Scouting Force.

Admiral Van Arsdall has also served aboard the USS GREER, USS SELFRIDGE, USS VINCENNES, USS HERDON, USS BARNETT, as Commanding Officer of the USS ANTHONY (DD-515), and Commanding Officer of the Destroyer USS PERRY.

In May 1951 he assumed command of Escort Squadron Ten, the USS RAYMOND, flagship. In August 1952 he joined the Staff of the Naval War College, for service in the Strategy and Tactics Department. January 27, 1955, he reported to the Office of the Chief of Naval Operations, Washington, D.C., preparatory to leaving for Paris, France where he served as U.S. Naval Attache and U.S. Naval Attache for Air. In 1957-1959 he commanded the USS TIDEWATER (AD-31) and Destroyer Squadron 36, then served for a year as Chief of Staff and Aide to Commander Destroyer Force, Atlantic.

He served in the Office of the Chief of Naval Operations, Navy Department, as Head, Joint and International Plans Branch, Strategic Plans Division, from September 1960 until February 1962, when he became Commander Destroyer Flotilla One. In March 1963 he reported as Chief of the War Games Division, Plans and Policy Directorate, J-5, Joint Staff, Joint Chiefs of Staff, Washington, D.C.

In March 1966 he became Commander South Atlantic Force/Commander Task Force Eighty-Six. He relieved as Commander Cruiser-Destroyer Force, U.S. Atlantic Fleet, on April 21, 1967.

His numerous decorations include the Navy Cross, Silver Star Medal, Legion of Merit, and Ribbon for the Navy Unit Commendation.

Rear Admiral Van Arsdall is married to the former Miss Polly Ann Austin of Richmond, Virginia, and has three children: Anne Van Arsdall, Clyde J. Van Arsdall, III, and Robert B. Van Arsdall. His official home address is Indianola, Mississippi.



Commander Puget Sound Naval Shipyard
REAR ADMIRAL WILLIAM F. PETROVIC, USN

William Francis Petrovic was born in Cleveland, Ohio, on January 12, 1913, and entered the United States Naval Academy, Annapolis, Maryland, in 1931. He was commissioned an Ensign in the U. S. Navy in 1935, and subsequently attained the rank of Rear Admiral, to date from August 1, 1963.

After duty on USS OKLAHOMA, he attended the Massachusetts Institute of Technology where he received a Master of Science degree in naval architecture and marine engineering in 1941. For service in the Pacific Theater during World War II he was awarded the Bronze Star Medal with Combat "V".

Rear Admiral Petrovic has, during his career, served in the Mare Island Naval Shipyard, the San Francisco Naval Shipyard, the Puget Sound Naval Shipyard (1941-1945) and as the Commander of the New York Naval Shipyard. He has also served three tours of duty in Washington, D.C. in the Bureau of Ships and the Naval Ship Systems Command. He has commanded the Puget Sound Naval Shipyard since March of 1967.

Married to the former Gertrude M. Kirk of Limerick, Pennsylvania, he has four children: William Kirk, James Richard, Deborah Lynn, and Bruce Douglas Petrovic.



Commandant, Thirteenth Naval District
and Commander Fleet Air Whidbey
REAR ADMIRAL HERMAN JOHN TRUM, III

Herman John Trum, III, was born in Chicago April 5, 1917, and was graduated from the Naval Academy in 1940. After serving aboard the battleship USS NEW MEXICO, he completed flight training and was designated a Naval Aviator in 1943. After serving as a flight instructor, he served with Fighting Squadron 49, seeing combat action against Okinawa and Japan.

During the Korean War, he was Commanding Officer, Fighter Squadron 53, where he flew combat missions against Communist aggressors. After he left that command, he returned to Korean waters as Air Officer of the aircraft carrier VALLEY FORGE, where he was awarded the Bronze Star Medal with Combat "V" among other decorations.

From 1953 to the present, he served in various commands ashore and afloat, including command of the fleet oiler USS MANATEE and the attack aircraft carrier USS ORISKANY.

Included among his decorations are the Legion of Merit, Distinguished Flying Cross with Gold Star, the Air Medal with seven Gold Stars, the Vietnam Service Medal and the Republic of Vietnam Campaign Medal with Device.



THE TRADITION OF THE SPONSOR

The origin of the christening ceremony for sea-going vessels goes far back into antiquity. Passed on to modern times as an inviolable tradition, the christening of ships and boats by a special person is practiced by all nations in one form or another.

Ships of the U.S. Navy were originally christened by men until early in the 19th century, usually with wine, brandy, or Irish whiskey. The first ship to be christened by a woman was the Concord, launched in 1828. Her name is lost to us; she is known only as "a young lady of Portsmouth." She started a powerful tradition, for during the past seventy years, there have been only two known male sponsors. Since women have taken over, champagne has become the accepted christening medium.

The sponsor holds a special place in the hearts of men who sail the ship she christens. They believe that the spirit of the sponsor enters the ship at christening and remains there forever.



Ship's Sponsor
MRS. GALE W. MCGEE

MRS. GALE W. MCGEE

Mrs. Gale McGee, wife of the Senior United States Senator from Wyoming, is the product of a small, mid-American town, the daughter of a physician, a former teacher, and a housewife who has found time while rearing four children to keep pace with one of the busiest men-on-the-go in Washington.

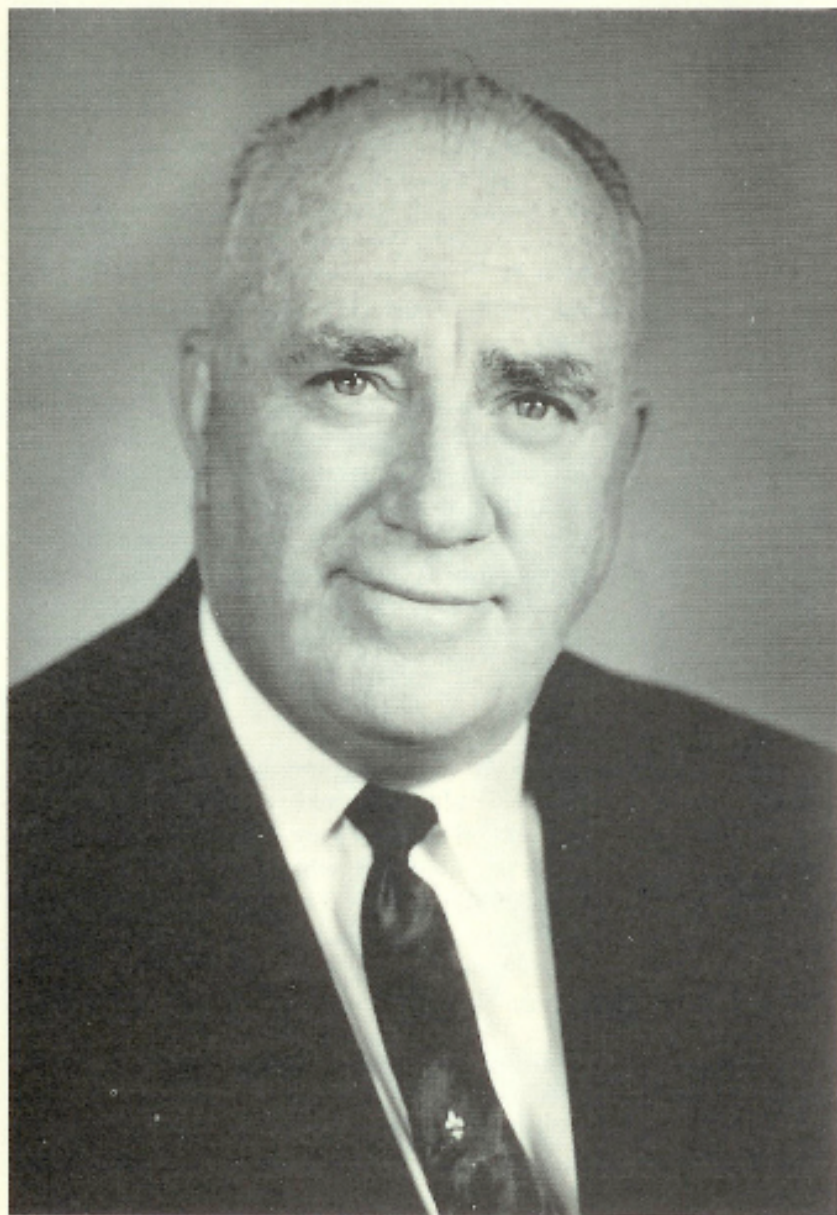
Mrs. McGee, born Loraine Baker, grew up in Iowa, though she attended Nebraska State Teachers College at Wayne, where she earned an A.B. degree and met Gale McGee. They were married in June, 1939, after three years of teaching in Nebraska public schools.

Loraine McGee concentrated on being wife and mother while her husband advanced in academic circles, earning his Ph. D. from the University of Chicago in 1947 and attaining a professorship in American History at the University of Wyoming in Laramie, where he also served as chairman of the Institute of International Affairs until his election to the U. S. Senate in 1958. During this time, Mrs. McGee collaborated with her husband in leading study tours of Europe, including one to the Soviet Union and other Eastern European nations in 1956.

The McGees have four children, two boys and two girls, the youngest born in the election year of 1958 when Mrs. McGee became known in virtually every village of Wyoming as she campaigned with her husband, who, up to that time, had never held, nor sought, public office. The pace has heightened considerably since McGee was elected to the Senate, and particularly since his appointment, early in his second term, to the Foreign Relations Committee.

Mrs. McGee has been active in a number of organizations over the years, particularly the League of Women Voters, P.E.O., the Senate Wives Club, and the National Democratic Women's Club, on whose governing board she has served two years.

The Principle Speaker...



DR. R. FRANKLIN THOMPSON
President of the University of Puget Sound

R. FRANKLIN THOMPSON

Dr. R. Franklin Thompson, President of the University of Puget Sound for 26 years, is a native of Nebraska, graduating from Nebraska Wesleyan University. He did graduate work at Drew University where he earned a Bachelor of Divinity degree, a Master's degree and a Ph.D. degree. While at Drew he received the Delaplaine-McDaniel Graduate Fellowship to Oxford University where he studied at Mansfield College and later at the University of Zurich in Switzerland. He holds honorary doctorate degrees from Nebraska Wesleyan University, American University, University of Pacific, and Willamette University, and is an honorary fellow of the Scandinavian Theological School at Gothenburg, Sweden.

Upon returning from graduate study abroad, Dr. Thompson taught at Willamette University, Salem, Oregon, as professor of social science. He was also Dean of Freshmen and later Administrative Vice President. In 1942 he was elected to the presidency of the University of Puget Sound.

Dr. Thompson is an ordained Methodist clergyman and he has been particularly active in church affairs on the national and international levels. For three quadrennia he has served on the Executive Committee of the Council on World Service and Finance which carries out the financial directives of the Methodist General Conference and is now Recording Secretary of the Executive Committee of the Board of Education of the Methodist Church. He is a member of the Executive Committee of the World Methodist Council which correlates the world-wide activities of the Church.

He has been president of the National Association of Methodist Colleges and Universities, and a member of the Financial Commission of the Association of American Colleges.

In Tacoma, he has served as president of the Rotary Club and of the World Affairs Council and is a member of the Board of Trustees of the University of Puget Sound, Pacific First Federal Savings and Loan Association, Washington Historical Society, and Tacoma General Hospital. He was recently elected to the Board of Trustees of Nebraska Wesleyan University.

He is married to Lucille B. Thompson and has two daughters. Martha is a graduate of Syracuse University and is teaching in the Lake Washington School District; Mary (Mrs. George Turnbull) is a senior at the University of Washington.

THE UNITED STATES SHIP PUGET SOUND (AD-38) COMMISSIONING CEREMONY

INVOCATION

LCDR JOSEPH F. YULASZEK, CHC, USN
Chaplain, U.S. Naval Hospital, Bremerton

★

WELCOMING REMARKS AND INTRODUCTION OF DISTINGUISHED GUESTS

REAR ADMIRAL WILLIAM F. PETROVIC, USN
Commander, Puget Sound Naval Shipyard

★

INTRODUCTION OF PRINCIPAL SPEAKER

REAR ADMIRAL WILLIAM F. PETROVIC, USN
Commander, Puget Sound Naval Shipyard

★

COMMISSIONING ADDRESS

DOCTOR R. FRANKLIN THOMPSON
President, University of Puget Sound

★

READING OF NAVY DEPARTMENT ORDERS TO COMMISSION USS PUGET SOUND (AD-38)

REAR ADMIRAL WILLIAM F. PETROVIC
Commander, Puget Sound Naval Shipyard

★

HOISTING OF THE ENSIGN, JACK, AND COMMISSION PENNANT

The United States Ship PUGET SOUND
is now in commission

READING OF COMMANDING OFFICER'S ORDERS AND ASSUMPTION OF COMMAND

CAPTAIN RICHARD B. JACOBS, USN

★

SETTING OF THE FIRST WATCH BY THE EXECUTIVE OFFICER

COMMANDER JOHN E. GARRETT, USN

★

BREAKING OF THE PERSONAL FLAG OF

REAR ADMIRAL CLYDE J. VAN ARSDALL, JR., USN
Commander Cruiser-Destroyer Force, U.S. Atlantic Fleet

★

PRESENTATION

MR. W. ROSS WERNER
President, Bremerton Chamber of Commerce

★

BENEDICTION

LT HENRY A. TIDWELL, JR., CHC, USN
Chaplain, Naval Ammunition Depot Bangor

★

BAND SELECTIONS

Thirteenth Naval District Band

★

VISITING ON BOARD



CAPTAIN RICHARD B. JACOBS, USN

Captain Richard B. Jacobs, USN, was born in Revere, Massachusetts, and was graduated from the United States Merchant Marine Academy at Kings Point, New York. He received his naval commission in 1943.

During World War II, Captain Jacobs served in USS PRINCETON (CVL-23) during the Pacific Campaign and USS PROVIDENCE (CL-82) in the Atlantic. While serving in PRINCETON, he won the Silver Star Medal for "conspicuous gallantry and intrepidity . . . when that vessel was under attack by enemy Japanese aircraft . . . during the Second Battle of the Philippine Sea . . ." He was also awarded the Purple Heart for wounds received during this battle.

Since World War II, Captain Jacobs has served afloat in USS SALEM (CA-139), USS OZBOURN (DD-846), on the staff of Commander Destroyer Squadron Nineteen, as Executive Officer of USS HARWOOD (DD-861), as Commanding Officer of USS STRIBLING (DD-867), and Commanding Officer of the Guided Missile Frigate USS FARRAGUT (DLG-6).

His shore assignments have included duty as Commanding Officer of the Naval Reserve Training Center in Bangor, Maine, as well as attendance at courses of instruction at the General Line School, Monterey, California, and the Naval War College, Newport, Rhode Island.

Prior to assuming command of the PUGET SOUND, Captain Jacobs served as staff Analyst and Computer Manager on the staff of Commander Cruiser-Destroyer Force Atlantic Fleet.

Captain Jacobs is married to the former Elsie McKinnon of Brewer, Maine. They have one daughter, Karen.



CAPTAIN RICHARD B. JACOBS, USN
Commanding Officer, USS PUGET SOUND



COMMANDER JOHN E. GARRETT, USN
Executive Officer, USS PUGET SOUND

COMMANDER JOHN E. GARRETT, USN

Commander John E. Garrett, was born 18 January 1930, in Overbrook, Kansas, the son of Mr. and Mrs. Frank Garrett of Lyndon, Kansas. He graduated from the University of Kansas in 1952 with a BA degree in Psychology.

Commander Garrett was commissioned on 7 May 1953. His first duty assignment was at the Harbor Defense Unit, U.S. Naval Station, Newport, Rhode Island. In June of 1955, he was transferred to NAS, Quonset Point, Rhode Island, where he served as First Lieutenant. In October 1957, Commander Garrett reported on board the USS NEWPORT NEWS (CA-142) for duty as a Communication Officer, and ECM Officer. In January 1959, he was transferred to the USS MARIAS (AO-57) where he served as Operations Officer. In February 1961, Commander Garrett was transferred to Staff, CINCNELM, London, England, as Assistant Secretary, Joint Staff. In March 1964, Commander Garrett was transferred to the USS NEOSHO (AO-143) as Executive Officer. He was appointed the temporary rank of Commander on 2 October 1965 as a spot promotion. Before reporting to his present duty station as Executive Officer of the USS PUGET SOUND (AD-38), Commander Garrett was stationed in the Bureau of Naval Personnel, Washington, D.C., where he was performing as Head Enlisted Retention Section.

Commander Garrett was awarded the Armed Forces Expeditionary Medal while on board the USS NEWPORT NEWS during the Lebanon Crisis in 1956, and received the second award during the Dominican Republic Revolution while aboard the USS NEOSHO in 1965. He was awarded the National Defense Medal for service during the Korean and Viet Nam conflicts.

Commander Garrett is married to the former Miss Mary Elizabeth O'Brien of Jamestown, Rhode Island. They have two sons, John Edward Garrett, Jr., age 9, and Kevin Patrick Garrett, age 6, who are now residing at Jamestown, Rhode Island.

DEPARTMENT HEADS



COMMANDER R. A. VESSEY
Dental Officer



LCDR R. K. MULLALY
Repair Officer



LCDR R. C. HOGAN
Supply Officer



LIEUTENANT D. G. DUNCAN
Engineering Officer

DEPARTMENT HEADS



LIEUTENANT T. M. PERKINS
Weapons Officer

TO
REPORT

LIEUTENANT R. K. BURKE
Medical Officer



LIEUTENANT (JG) C. A. RIGGS
Operations Officer



LIEUTENANT (JG) S. R. TARRANT
Deck Officer

SHIP'S OFFICERS



LCDR R. A. ESPOSITO
Prosthetics Officer



LT E. G. TROMBLY
Asst. Repair Officer



LT J. A. LARSEN
Stores Officer



ENS T.J. REMPE
Damage Control Asst.



ENS S. DAVIS, JR.
Food Services Officer



ENS M. H. WOLFE, JR.
Ships Store Officer



ENS M. A. DODGE
Communications Officer



ENS R. G. MUSHEY
Repair Department

SHIP'S OFFICERS



CHSHIPCLK W-4
D. W. SMITH
Personnel Officer



CHMACH W-2
E. M. RILEY, JR.
Machinery Repair



CHSHIPREPTECH W-2
W. R. ROBBINS
Hull Repair Officer



MACH W-1
J. B. GIBSON, JR.
Main Propulsion



SUPCLK W-1
"J" Q. ANDERSON
Disbursing



SUPCLK W-1
R. K. FARLOW
Asst. Stores Officer



CHELEC W-3
P. EPOCH
Electrical Officer

MASTER CHIEF PETTY OFFICERS



GMCM A. M. NARY
Repair Department



PNCM E. D. MOYER, JR.
Executive Staff



SPCM M. L. AINSWORTH
Engineering Department

SENIOR CHIEF PETTY OFFICERS



CSCS D. L. CROW
Supply Department



ICCS R. W. WASHINGTON
Engineering Department



HMCS R. W. BORDNER
Medical Department



SKCS C. E. CUNNINGHAM
Supply Department



DCCS R. J. METIVIER
Engineering Department



ETCS C. N. TYLER, JR.
Repair Department

SENIOR CHIEF PETTY OFFICERS



STCS D. M. WILLIAMS
Repair Department



TMCS H. FULLER
Weapons Department



ENCS C. R. ALAIR
Repair Department



BMCS F. B. KNIGHT
Deck Department



MRCS R. L. WOLFGRAM
Repair Department



FTCS J. T. CHLOST
Repair Department

CHIEF PETTY OFFICERS



MRC R. L. DIONNE
Repair Department



BRC H. W. BYRD
Repair Department



YNC R. W. WRIGHT
Admin. Department



BRC I. W. SHEA
Repair Department



MMC E. BRIDGES
Repair Department



FTGC J. O. COOK
Repair Department



DMC G. F. MULLIGAN
Repair Department



MMC J. M. DAVID
Engineering Department



EMC J. L. MITCHELL
Engineering Department

CHIEF PETTY OFFICERS



SFC "L" "C" DOYLE
Repair Department



SFC C. HOUSTON
Repair Department



SFC J. L. MURRAY
Chief Master At Arms



SFC R. T. YURCO
Repair Department



SFC J. W. RICE
Repair Department



SFC L. "D" McKIBBEN
Repair Department



ETC R. G. HANSEN
Repair Department



SFC J. W. ROBERTSON
Repair Department



FTGC D. E. KENDALL
Repair Department

CHIEF PETTY OFFICERS



CSC H. V. MILLER
Supply Department



SFC R. L. DIXON
Repair Department



SMC J. STAGGS, JR.
Operations Department



SKC H. S. DICKERSON
Supply Department



SHC J. W. TINKLER
Supply Department



RMC D. R. STEICHEN
Repair Department



ICC J. R. GODWIN
Repair Department



SFC L. T. BROWN
Repair Department

FIRST CLASS PETTY OFFICERS

ALTSHULER, H. J., GMT1
 ARBUCKLE, D.V., TM1
 ARNOLD, H.B., BM1
 AVILA, C.T., SD1
 BAKER, E.R., MR1
 BAKER, R.D., ET1
 BROWN, L.T., SF1
 BROWN, V.W., TM1
 BRYANT, W.D., HM1
 BUTTERFUSS, R.E., MR1
 CAMPBELL, L.D., SK1
 CARTER, J.(n), Jr., EN1
 CASS, J.W., MM1
 CERCHIARO, V.J., MR1
 CINCAR, R.G., EM1
 COLVIN, H.E., SF1
 CONVERY, T.J., RD1
 CORTEZ, L.G., MM1
 CRAWFORD, J.(n), SF1
 DAVIS, W.N., BR1
 DONLIN, E.A., LI1
 DUFF, M.L., SF1
 DUGAN, C.W., MR1
 DULIN, W.C., SF1
 ERB, H.G., IC1
 FENTON, D.J., TM1
 FOUNTANO, J.C., BT1
 GARVIN, M.J., CS1
 GRAY, A.H., Jr., SF1
 GRAY, J. L., SF1
 HAMILTON, W.J., DC1
 HANSEN, G.C., IC1
 HARKENESS, K.C., SF1
 HARSIS, Clyde H., TM1
 HERD, A.M., SF1
 HIGGINS, T.H., EM1
 HOLLIFIELD, H.D., MM1
 HURST, L.R., SF1
 JOHNSON, E.L., OM1
 JOHNSON, F.L., SF1
 JONES, A.(n), CS1
 KING, M.D.B., CS1
 KOEHN, D.D., EM1
 KOLYNYCH, W.E., BM1
 KRAJEWSKI, L.J., MM1
 LEA, E.E., III, ET1
 LEWIS, C.(n), MR1
 McBROOM, A.R., TM1
 McCARTHY, M. "J", MM1
 MEEK, R.B., MR1
 MEREDITH, R.S., EM1
 MITCHELL, J.W., MR1
 MORRISON, T.F., BT1
 MORTON, D.J., PN1
 MOSER, J.H., DC1
 NIXON, F. (n), BT1
 PATTON, R.J., BM1
 POTTER, R.L., DP1
 RANDALL, J.R., Jr., IC1
 ROMACK, R.D., PM1
 ROWLAND, H.D., SF1
 ROWLEY, J.E., Jr., MM1
 RUONALA, R.P., GMG1
 SALAZAR, M.S., SD1
 SCANLON, R.E., MM1
 SHORTER, A.L., PM1
 SIMACEK, K.D., DC1
 SINGLETON, M.(n), SF1
 STRAW, C.D., DT1
 SULLIVAN, T.C., SF1
 TAYLOR, W.A., MR1
 THORSTED, P.H., ET1
 TRESSLER, W.B., EM1
 TYRE, J.H., MM1
 VAN DYKE, R.E., MM1
 VAN ORDER, W.C., YN1
 VITAROLLI, R.E., HM1
 WATTS, "T" H., MM1
 WEST, R.J., SK1
 WHITE, D.K., EM1
 WHITFIELD, D.H., ML1
 WRAY, W.M., Jr., IM1

SECOND CLASS PETTY OFFICERS

ABELQUIST, P.W., EM2
 ANGLO, P.S., SD2
 ARGO, K.A., SFM2
 ARNOLD, S.E., ETN2
 AUDORBB, L.E., SFM2
 AUSTIN, B.F., EM2
 AVANT, R.L., BM2
 BAIRD, R.L., BM2
 BERNHARDT, R.K., BT2
 BOYD, I.S., HM2
 BRYANT, G.L., Jr., MM2
 BURHENN, F.W., EM2
 BURRELL, T.S., MM2
 CALDER, C.R., SFM2
 CAMPBELL, R.D., SFM2
 CHANDLER, J.R., SK2
 CHARLESWORTH, J., SFM2
 CHESNEY, E.E., MR2
 CLARK, M.(n), SFP2
 CLARK, R.A., MM2
 COLE, J.W., CS2
 CONCEPCION, C.T., SD2
 CONNOLLY, J.R., TM2
 COUCH, J.W., BM2
 COX, R.B., TM2
 D'ARGOSTINO, R.A., EM2
 DAVIS, C.R., MM2
 DAVIS, E.A., SK2
 DEPIES, W.A., ETN2
 DIBBLE, H.J., SFM2
 DOZIER, T.F., Jr., SH2
 DUMBROFF, J.R., SFM2
 ENGRAM, M.(n), SD2
 FAUST, E.E., MR2
 FELIX, M.A., AK2
 FERRY, R.J., ETN2
 FEYO, T.A., GMG2
 FIELD, J.M., LI2
 FINKENBINDER, J.D., CS2
 FISHER, D.D., TM2
 FLOWERS, J.L., DC2
 FOLGER, R.A., SFM2
 FORD, W.D., SFP2
 GARRETT, R.A., SK2
 GARTMAN, G.R., Jr., SFP2
 GEOHAGAN, J.M., III, IC2
 GILL, R.C., SK2
 GOODFELLOW, D.R., SFM2
 GOPP, T.L., MR2
 GUNN, D.(n), Jr., BT2
 HAMMONS, T.N., BT2
 HAMMRRICH, R.J., DC2
 HEBERT, A.R., SFM2
 HENDRIX, C.R., SH2
 HESSE, D.E., SFM2
 HINTON, G.W., SFM2
 HINTON, R.E., EN2
 HOWLAND, J.R., OM2
 HURST, D.S., SFM2
 JUSTICE, T.D., YN2
 KEATING, R.A., EN2
 KEMP, W.P., Jr., DT2
 KIMELSTIEN, B.R., PM2
 KIRKPATRICK, G.M., MR2
 KIST, R.L., PM2
 KUBAT, R.R., SFM2
 KUHLMAN, R.L., PN2
 LEPPERSON, C.R., ML2
 LESTER, P.C., SK2
 LOSEA, F.T., SFP2
 LOWERY, G.G., ETR2
 McCLINNIS, T.R., GMG2
 MALO, C.A., MR2
 MARTIN, M.K., SM2
 McGAFFIC, V.J., MM2
 MEDIAMA, E.P., SFP2
 MITCHELL, R.G., IC2
 MITCHELL, W.D., ETN2
 MONTGOMERY, J.J., RM2
 MUELLER, E., CS2
 MUELLER, R.E., CS2
 MULLINS, C.E., EM2
 NADEAU, R.M., YN2
 NELSON, L.R., BT2
 NESTOR, H.D., III, HM2
 NOREN, L.N., SFM2
 O'BRIEN, V.L., SFM2
 PALLEY, M.H., BT2
 PINT, R.E., FTG2
 PODESZWIK, D.F., QM2
 PORTER, L.L., SH2
 PRINCE, D.(n), EM2
 PUTT, R.E., DP2
 RAYNOR, J.L., EM2
 REBURIANO, J.S., SD2
 REUTER, E.I., EN2
 ROBERTS, B.M., SFP2
 ROGERS, B.M., DC2
 ROHL, D.E., ML2
 ROWE, S.F., GMG2
 RUBY, G.W., MR2
 RUGG, B.L., SFM2
 SCHWALL, R.T., EN2
 SCOTT, D.A., DK2
 SHEALY, H.A., BM2
 SIEG, W.R., SFM2
 SISSON, D.S., AG2
 SLEDGE, W.F., SH2
 SMITH, A.L., ML2
 SMITH, R.L., PH2
 SMITH, R.A., EM2
 STOLL, H.E., Jr., SFP2
 STRANGE, J.D., BM2
 STRELECKI, S.A., DC2
 SYLVAIN, R.J., SFP2
 THOMAS, O.E., SK2
 TRACY, R.J., PC2
 TRUELOVE, T.H., BM2
 URBAN, H.W., MM2
 URQUHART, J.(n), SFP2
 VADER, R.H., Jr., MM2
 VICKERY, F.D., CS2
 WAGEMAN, J.L., Jr., SFP2
 WALKER, R.W., ETN2
 WATKO, L.S., Jr., EN2
 WEAVER, R.L., SFP2
 WELLES, C.L., GMG2
 WHITE, D.E., GMT2
 WHITE, E.D., SFP2
 WICKLINE, R.R., OM2
 WILLIAMS, C.D., SK2
 WILLIAMS, W.C., SFP2
 WILSON, C.T., HM2
 WOODARD, J.L., TM2
 WORKMAN, T.M., MM2
 YOUNG, A.A., BT2
 ZIMMERMAN, R.E., SFM2
 ZABST, P.N., MM2

THIRD CLASS PETTY OFFICERS

AGTE, N.L., MR3
 ALBER, R.E., SFP3
 ALDOUS, J.R., DP3
 ALLEN, C.W., Jr., MM3
 ANKLAM, D.D., BT3
 AUTER, C.E., BT3
 BARKER, J.R., MR3
 BASSO, J.T., TM3
 BENT, R.A., MM3
 BLECH, J.A., BM3
 BONOMO, R.P., ETN3
 BOWERS, D.W., HM3
 BROSENNE, W.L., DC3
 BROWN, D.W., SM3
 BROWN, R.S., SFP3
 BUMAN, L.H., IC3
 BUXTON, S.L., PN3
 CAMPANA, D.A., MR3
 CAMPION, P.R., SK3
 CARTER, S.(n), IC3
 CHAPMAN, K.D., ETN3
 CHERRY, W.G., ML3
 CLAPPER, S.A., MM3
 CLARK, M.M., SFP3
 COCCA, Z.M., Jr., SH3
 COFFIELD, L.J., SK3
 COLLETTE, R.J., BM3
 COPELAND, R.K., MM3
 CROCHET, G.J., EM3
 CULVER, C.K., MR3
 CUTLER, G.B., BT3
 DAIL, C.R., SM3
 DANPIEL, J.L., SFP3
 DAUBRESSE, L.D., EM3
 DAUGHERTY, G.H., SFP3
 DAVIS, H.N.B., YN3
 DE BLOIS, M.A., ETR3
 DE GUZMAN, R.M., SD3
 DEWITT, G.L., MM3
 DICKERSON, E.D., EM3
 DICKINSON, J.J., BM3
 DIXON, B.L., DT3
 DONNELL, B.E., YN3
 DOUGHER, J.R., CS3
 EGGERT, D.L., MR3
 ERICSON, E.E., MM3
 ERNST, T.M., PC3
 EUGLEY, C.R., MM3
 FANTASKI, J.W., SH3
 FILBERTH, D.H., SK3
 FINNIE, R.J., OM3
 FISCHER, P.L., SFP3
 FORD, J.E., RD3
 FORSYTH, R.A., MM3
 FRASER, G.D., SFP3
 FREEMAN, M.G., EM3
 FULCHER, J.E., ETN3
 FUNK, L.H., III, RM3
 GABEL, E.M., CYN3
 GATES, D.O., LI3
 GITTINGS, W.E., Jr., MR3
 GRANHOLM, C.E., EM3
 GRADY, J.J., MR3
 GRAY, R.W., ML3
 GREGNE, K.E., CS3
 GRIFFIN, G.F., SFP3
 GRIFFIN, J.L., SFP3
 GRIGGS, J.L., CS3
 BOWERS, D.W., HM3
 HALL, J.H., IC3
 HAMILTON, D.M., SFP3
 HARDY, J.T., MR3
 HARRINGTON, C.D., SFP3
 HARRISON, J.L., CS3
 HASKINS, R.D., TM3
 HAYES, R.T., MR3
 HAYNES, R.H., MR3
 HEAPS, T.D., DM3
 HENCSE, J.W., DC3
 HILEMAN, D.B., IC3
 HILL, D.F., MM3
 HILL, M.A., BM3
 HOLODY, T.D., SH3
 HUNZIKER, W.A., RM3
 HYDER, B.(n), CS3
 JONES, G.(n), EM3
 KAHN, L.H., LI3
 KEBLER, D.E., SFP3
 DEEFER, W.P., EN3
 KETOLA, L.F., YN3
 KINCADE, L.G., EN3
 KOONTZ, R.A., TM3
 KUNNEMEYER, H.W., BT3
 LAIL, D.L., SFP3
 LAMBER, W.O., CS3
 LAESON, D.H., SFP3
 LEATHEM, J.F., TM3
 LE BOUEF, A.G., SFP3
 LEWIS, R.D., EN3
 LEWIS, W.E., SFP3
 LIPINSKI, A.L., SFP3
 LONEROHN, R.A., SFP3
 LONG, H.R., Jr., MM3
 LOW, C.G., EM3
 LOWE, T.D., EM3
 LUNDBERG, R.R., YN3
 LUNIOR, W.A., IM3
 MACMILLAN, D.R., IC3
 MAGGARD, R.D., CYN3
 MANSKE, W.C., RM3
 MAVRO, J.L., CS3
 MAXWELL, J.N., SK3
 MAY, C.D., SFP3
 MAYES, W.L., EM3
 MEARS, L.D., OM3
 MIHOC, J.P., DP3
 MILLER, A.J., SFP3
 MILLER, R.J., DC3
 MOORE, R.W., RM3
 MORGAN, J.P., MR3
 NIDEL, W.J., Jr., IC3
 NOELL, S.S., EM3
 OCAVA, A.M., SD3
 ORDNER, R.D., EN3
 PALMER, R.W., EM3
 PERAINO, R.A., SFP3
 PETERMAN, C.L., BM3
 PETERSON, D.K., BT3
 PHELPS, J.F., FTG3
 PHILLIPS, J.E., SFP3
 PONTIFLET, L.A., SFP3
 PORTER, M."E", ETN3
 POWELL, W.V., MR3
 PRESLEY, E.G., SFP3
 RAHN, W.E., ENTR3
 READ, A.L., MR3
 REED, E.S., FTG3
 RICHMAN, J.S., CS3
 RICKERSHAUSER, D.J., MR3
 ROBINSON, J.F., QM3
 ROWE, R.L., TM3
 SANFORD, P.B., FTG3
 SAUNDERS, D.C., BT3
 SAWYER, E.L., ETR3
 SCAGLIONE, P.M., GMT3
 SCHMIDT, P.H., YN3
 SEBASTIAN, J.(n), SFP3
 SELF, E.R., MM3
 SHUMAN, R.W., HM3
 SINERCO, S.(n), EM3
 SLY, G.W., SFP3
 SMIEH, W.J., SFP3
 SOTO, C.J., PC3
 SPALDING, H.L., ETN3
 SOUTHERLAND, J.C., SH3
 STALCOSKIE, R.D., SFP3
 STANICK, F.A., SFP3
 STEPHENSON, E.G., SH3
 STORRIN, C.A., ETR3
 SUMPTER, L.W., EM3
 TATRO, F.W., FTG3
 TAYLOR, C.G., Jr., SFP3
 THOMPSON, D.L., SK3
 THURSTON, R.L., SFP3
 TUTTILL, K.H., BM3
 TUTTLE, M.R., ETN3
 TYE, C.A., SH3
 UNRUH, W.E., EM3
 VERRA, J.V., SFP3
 WALDIE, J.R., BT3
 WALMSLEY, L. W., II, SFP3

THIRD CLASS PETTY OFFICERS

GARVER, S.G., TN
 WALTER, S.A., EN3
 WATERHOUSE, C.A., MR3
 WATTS, T.(n), Jr., IM3
 WEIBERG, A.R., DC3
 WELLS, D.M., ETR3
 WEST, D.H., PN3
 WESLEY, D.W., MR3
 WHEELER, P.T., BT3
 WILLIAMS, L.R., SFP3
 WILLIAMS, W.D., RM3
 WINOWIECKI, G.L., MR3
 YANOSCHKO, J.G., Jr., SK3
 ZIOLKOWSKI, R.P., TM3
 ZYCH, S.J., DK3

NON-RATED ENLISTED MEN

ABARIENTOS, I.C., TA
 ACHORD, T.A., FA
 ADAMO, J.J., SN
 AHRENS, M.E., SA
 ALEXANDER, J.B., SA
 ALEXANDER, T.A., SA
 ALLEN, D.D., OMSA
 ALLEN, J.T., Jr., SA
 AMADOR, T.G., FA
 ANDERSON, D.J., SA
 ANDERSON, H.T., SA
 ANDERSON, W.B., SA
 ARABIE, T.R., SA
 ARMSTRONG, C.A., FA
 ARNDT, E.L., SN
 ASCHMAN, C.R., SA
 ATIENZA, J.P., TN
 AXTELL, R.W., Jr., SA
 BAIRD, R.N., SA
 BANDY, D.C., SA
 BARFIELD, J.T., SA
 BARKS, F.R., SA
 BARRETT, M.E., SA
 BASS, G.W., SA
 BATES, R.E., SN
 BATEWELL, R.P., FN
 BATTISHILL, J.A., FA
 BAUM, W.W., SA
 BAYER, S.J., FA
 BEAULIEAU, A.L., SA
 BEEKER, J.A., II, FA
 BELL, D.E., OMSN
 BENSON, W.R., FA
 BENTLE, S.E., MMFA
 BIGA, R.A., SA
 BLANCO, D.M., ICFA
 BOLT, R.J., SN
 BONILLA, C.J., SN
 BORCHARDT, B.L., ETNSN
 BORNEMANN, W.R., SN
 BOZICH, J.D., Jr., MMFA
 BOZMAN, S.R., SA
 BRADDOCK, J.L., SA
 BRADFORD, D.L., SA
 BRADY, J.J., FA
 BRALEY, W.A., SA
 BRANAM, K.W., SA
 BRANCFORTE, F., FN
 BRANT, E., Jr., SN
 BROCE, R.E., MRFN
 BROOKSHAW, W.J., GMGSN
 BROWN, B.K., FA
 BROWN, J.R., SA
 BROWN, R.J., SA
 BROWN, T.J., HN
 BROWNING, M.J., SN
 BRUMFIELD, B.D., SA
 BRYAN, W.J., SA
 BRYANT, G.H., SA
 BUCK, T.L., SA
 BUCKZO, K., SA
 BUSCH, L.A., SA
 BUTTS, M.L., FA
 CAGUIAT, R.S., TN
 CAISE, J.W., SA
 CALIZO, M.P., TN
 CAMPBELL, R.W., FA
 CALABRESE, P.J., SA
 CALDERONE, C.A., SA
 CAPPELLI, A.R., SA
 CARAVELLO, S.F., SA
 CARDONE, D.J., FN
 CARPENTER, R.V., FA
 CARRIO, R.M., SA
 CARRO, V.J., SA
 CARROLL, C.J., SA
 CARUSILLO, R.A., SA
 CASERTA, R.V., Jr., SN
 CASON, G.R., FN
 CAULKINS, E.R., FN
 CERANKOSKI, P.E., MRFN
 CHILDERS, L.D., SN
 CLARK, B.L., SA
 CLARK, E.J., SA
 CLARK, L.A., DCFA
 CLARK, N.R., SN
 CLARK, P., FA
 CLAWSON, R.A., SA
 CLEMENTE, V.J., FN
 COATE, D.L., ICFN
 COHEN, K.O., FA
 COLEMAN, R.J., SKSN
 COMPTON, R.R., SN
 CONFERE, V.L., Jr., FA
 CONNELL, K.J., FA
 CONSOLETTI, D.R., SA
 CONWAY, R.P., Jr., FN
 COOK, J.L., SA
 COOPER, G.A., SA
 COPE, T.C., SA
 CORNELL, W.D., FA
 COTTRELL, P.J., SA
 COUNASSE, G.H., SA
 COUTOIS, R.E., FA
 CROSBY, D.O., SA
 CROSE, A.C., SA
 CUDDENBACK, B.D., SA
 DANNENBURG, D.R., FA
 DAVIDSON, J.V., MMFA
 DAVIS, A.C., FA
 DAVIS, J.E., SA
 DAVIS, R.T., SA
 DAY, P.J., SA
 DEARMORE, T.C., ETRSN
 D'ESPOSITO, L.J., SN
 DEL PONTE, R., FA
 DEMARCO, A.J., SA
 DESSART, D.J., SA
 DEVINE, D.J., SA
 DEZOUTE, G.L., FA
 DALY, D.J., SA
 DI FAVA, R.E., SA
 DITTOMASO, M.R., SA
 DOLLISON, D.G., FN
 DOLSON, R.H., SN
 DONADLO, K.R., SA
 DONOVAN, D.F., FA
 DOPKE, R.D., SA
 DORNBUSCH, D.L., SA
 DOUGLAS, J.M., FA
 DOUP, G.N., FA
 DOYLE, R.J., SA
 DRAKE, J.M., SA
 DRESBAUGH, R.K., SA
 DREWREY, G.D., SA
 DROST, L.R., SA
 DUBIL, J.V., SN
 DURALIA, J.J., SA
 DUVAL, D.J., SA
 ECHARD, R.W., MRFA
 ECKLES, R.F., FA
 EDWARD, R.R., SA
 ELISENIOR, G.E., FN
 EISNOR, J.I., SA

NON-RATED ENLISTED MEN

ELLIS, J.M., SA
 EMMINGER, R.L., EMFN
 ENMAN, C.J., FA
 EPAFIANO, J.A., FN
 EVERETT, W.E., FA
 EYER, E.D., DCFA
 FAIRCLOTH, C.L., SA
 FARLEY, R.A., SA
 FARRELL, J.M., FA
 FEAR, D.W., FA
 FERGUSON, F.E., FA
 FERMINO, P.D., SN
 FERRANTE, W.D., SN
 FERRARA, E.G., FN
 FERRO, M.S., SA
 FETCH, L.W., RDSN
 FIDDNER, J.R., SA
 FIDLER, R.B., SA
 FISCHER, L.A., SN
 FISCHER, R.E., GMSN
 FISHBURNE, G.T., SA
 FISHEL, B.E., SA
 FITZGERALD, J.H., SA
 FITZGERALD, K.A., ICFN
 FLAMAND, E.C., SN
 FLOYD, C.V., SA
 FORD, J.R., SN
 FORSYTH, C.J., OMSN
 FOSTER, R.L., TMSN
 FOWLER, M.R., MMFN
 FRAUCI, L.J., SA
 FULCHER, G.R., SA
 FULLER, W.G., FA
 GABRYSZAK, T.D., MRFN
 GALLAGHER, M.J., SA
 GAMBLE, G.P., FA
 GARCIA, A., SA
 GARCIA, S.G., TN
 GARVER, R.L., SA
 GAUMONT, D., SA
 GILBERT, D.J., Jr., SA
 GILHOALY, D.B., SA
 GILLESPIE, D. J., SN
 GILLOGLY, F.M., SA
 GLEASON, P.W., SA
 GODDARD, D.P., SA
 GOODLATTE, J.T., SA
 GOODE, L.S., FA
 GRANT, R.W., FA
 GRAVES, W.D., SA
 GRAY, G.A., FN
 GRECO, R.F., FA
 GREEN, J.M., FA
 GREENE, R.W., SA
 GREENEUP, D.D., SA
 GREISER, R.F., FA
 GRIFFIN, D.J., SA

GRIFFIN, J.L., FA
 GRIMES, M.E., FN
 GRINNAGE, N.J.H., SA
 GROBER, T.L., SA
 GULLIAMS, J.H., DCFA
 GUY, R.F., SA
 HAAG, D.A., SFPFN
 HAAS, P.M., FA
 HADDOX, J.D., FA
 HAFER, D.G., FN
 HALL, A.L., FN
 HAINES, K.J., SN
 HARRIS, C., SA
 HARRIS, R.D., MMFA
 HARRIS, R.F., SA
 HART, P.G., SA
 HARVEY, D.E., FA
 HAYDEN, D.P., FA
 HAYES, C.R., FN
 HAYES, R.E., SA
 HEATH, D.M., FA
 HELMS, D.K., SA
 HELSEL, R.A., SA
 HELTON, J.W., FN
 HENNEMAN, D.M., SA
 HENRY, R.D., SA
 HENSON, D.H., SA
 HEDNANDEZ, A., SA
 HERANDEZ, C., SA
 HERRING, C., SA
 HICKEY, G.D., SN
 HINE, D.W., SA
 HOAR, A.L., FN
 HOFFMAN, R.A., SA
 HOHENSTEIN, W.N., RMSN
 HOLLIS, D.H., ICFA
 HOLT, C.H., SA
 HOPKINS, M.F., SA
 HORN, D.R., SA
 HORNE, R.D., SN
 HOUSHIN, J.L., SA
 HOUCK, J.L., FA
 HOWANITZ, D.J., FA
 HOWARD, M.S., ICFN
 HOWE, W.H., III, SA
 HOYT, J.E., ETNSA
 HUGGINS, J.D., ETRSN
 HUNT, R.L., SA
 HUNTER, R.H., SA
 HUTTON, A.E., SA
 INGRAM, L.E., SA
 IVERS, T.F., MRFN
 JACKSON, C.P., SA
 JAMES, D.L., SA
 JAMES, R.N., SA
 JANKOWSKI, E.J., SN
 JURGENSON, S.L., SA

JOHNSEN, D.W., HN
 JOHNSON, E.D., Jr., SN
 JOHNSON, E.W., EMFN
 JOHNSON, M.A., FA
 JOHNSON, S.B., SA
 JOHNSTON, J.J., SA
 JONES, A.M., Jr., SA
 JONES, C.M., FA
 JONES, J.M., SA
 JONES, R.F., FA
 JONES, R.P., FN
 JONES, T.L., OMSA
 KALANSKY, L.V., FN
 KABEL, P.M., FA
 KALAMARIS, W., FN
 KARD, C.E., SA
 KAUFFMAN, B.E., SA
 KELLINGTON, T.C., FN
 KESSLER, R.G., SA
 KIGHT, C. N., FA
 KLING, B.E., SA
 KLUMP, P.L., SA
 KNOUT, R.L., SA
 KNUTSON, S.J., SA
 KOOPERSTIEN, J., FA
 KORNRUMPF, E.S., EMFN
 KROSY, M., SA
 KREAREAS, W.S., SA
 KRETCHMER, K.G., FA
 KRUKOFF, C.W., FA
 LADUKE, D.M., FA
 LANDINGTON, R.N., TN
 LANGDREAU, R.A., FA
 LANGIANO, D.A., FA
 LANGLEY, L., Jr., SA
 LARDIZABRAL, L.Z., TN
 LARSON, E.C., FN
 LASKEY, J.L., DCFN
 LAT, R.M., TN
 LATOUR, R.E., FA
 LAWSON, D.L., SA
 LEAMY, T.C., FN
 LEDDICK, J.P., FA
 LEE, G.K., MMFA
 LEE, T.E., FA
 LEHAM, D.W., SA
 LENZI, D.G., FA
 LEVER, W.P., SA
 LEVUSH, R.C., SA
 LEWIS, M., SKSN
 LEWIS, R.B., FA
 LILLEY, J.R., FA
 L'TALENIEN, E.S., DCFN
 LOEFELER, E.G., SA
 LONCZEWSKI, A.W., SN
 LOPEZ, O., SA
 LORIAUX, L.L., SA

LOSURDO, D., FA
 LUSZCZ, T.A., SN
 LUTZ, L.H., SA
 LUZETSKY, R., SA
 LYLE, M.S., SKSN
 LYMAN, J.C., SA
 MACMILLIAM, B.H., SA
 MAGBANUA, O.A., TN
 MAGGARD, K., CYNSS
 MAHONEY, D.M., SA
 MAILHOIT, T.R., FN
 MALOY, T.P., FA
 MAMMOCCIO, L.W., SA
 MANGALINDAN, R.B., TN
 MANN, G.C., SA
 MARGOT, O.J., SA
 MARTEL, R.R., FA
 MARTIN, E.L., SA
 MARTIN, R.J., SN
 MARTINEZ, V.M., SA
 MASSARO, E.V., SA
 MATA, T. P., SA
 MAUER, R.M., SA
 MAURAS, P.E., SA
 MAXON, P.E., FN
 MAXWELL, H.T., FA
 MAY, L.A., SA
 MAYER, R.M., SA
 McCALL, D. J., MRFN
 McCANN, C., FA
 McCLESKY, J.K., FN
 McCormack, G.R., SA
 McFARLAND, T.E., SKSN
 McGLOTHIN, J.B., SA
 McGRAW, T.T., SA
 McHALE, R. J., SA
 McKAY, C.L., SA
 McKERNAN, M.J., SA
 McLOUD, D.W., ETNSN
 McPHILLIPS, M.J., SN
 McQUAIG, J.E., SA
 McRAE, T.H., SA
 MESLER, F.E., FA
 MICHALSKI, D.N., FA
 MIGLIADI, T.A., FA
 MILTO, S.P., SA
 MILUSZFWSKI, R.A., SA
 MOLNAR, D.B., FA
 MONTGOMERY, S.L., SA
 MOORE, L.E., MMFA
 MORGAN, R.G., DA
 MORO, L.R., FA
 MORRISON, R.L., HN
 MORRISON, R.D., III, SA
 MOSLEY, J.W., FA
 MUNSTERMAN, D.D., FN
 MURPHY, J.D., Jr., SA

MURPHY, R.W., SA
 NAUGHTON, M.J., SN
 NAVA, L., Jr., MMFA
 NEITZER, R.A., FA
 NESS, R.E., SA
 NESSER, J.L., SA
 NEUCALL, J.J., SA
 NICHOLS, J.L., FA
 NOEL, J.K., III, SA
 NORDSTROM, R.E., DPSN
 NORRIS, S.A., SA
 NOWAK, R.R., SA
 ODOM, J.E., SA
 OLIVER, J.L., SA
 OLNEY, D.D., FN
 OLSEN, K.W., SN
 ORDIN, F.W., SA
 OSTER, D.J., TMSA
 OWEN, G.D., OMSN
 OWENS, W.K., SA
 PAINTER, J.C., SA
 PAQUETTE, L.A., SA
 PARADISE, J.A., SA
 PARLIER, R.L., SA
 PASBRIG, R.V., SA
 PAYNTER, R., SA
 PASCOFF, D., SA
 PATTERSON, M., MMFA
 PERKINS, W.F., SA
 PERRY, A.F., SA
 PERRY, G.M., SA
 PERRY, R.A., SA
 PETTIT, W.D., SA
 PFERDEORT, D.E., SA
 PHILLIPS, A., SA
 PHILLIPS, R.J., FA
 PHILLIPS, W.B., SA
 PICARSKI, S., SA
 PIGLOWSKI, D., SN
 PIZZ, R.S., FA
 POWELKA, J.L., SA
 POWELL, J.M., SA
 PRATCHER, B.W., SA
 PRICE, R.F., Jr., SA
 PROFITA, P.C., DN
 PROUTY, D.L., FN
 PRUE, J.M., ICFN
 PUGLIKE, J.A., FA
 QUINN, J.J., SA
 QUINN, J.K., Jr., SA
 RAINEY, H.W., FN
 RALEY, D.E., SA
 REED, J.D., TMSA
 REES, V.G., Jr., GMGSN
 REID, D.D., SN
 REYNOLDS, J.P., SA
 REYNOLDS, R.L., SN

RICCOBONO, S., SA
 RIEHLE, G.P., SN
 RIETA, D.G., TN
 RIGGS, T. J., SA
 ROBERSON, R.J., FN
 ROBERTS, D.J., FN
 ROBERTS, H.W., SA
 ROBEY, W.C., FN
 ROBINSON, D.B., SA
 ROESER, F.A., SA
 ROMANOFF, W.K., SA
 ROSE, C.W., MMFA
 ROSSITER, R.H., SA
 ROTHBAUM, L.E., SN
 ROUNDS, W.R., FN
 ROUNDY, A.G., FA
 ROSS, R.J., SA
 ROUSH, S.F., SN
 RUSSELL, S.L., HN
 RUSTIN, I.W., TN
 SAAR, W.R., SN
 SABAU, A.J., SA
 SAGABAEN, R.A., TN
 SALVADORE, J.J., Jr., SA
 SANCHEZ, M.J., FN
 SAPP, S.P., FN
 SAUVAGEAU, D., FA
 SAVAGEAU, A., Jr., DCFN
 SCHAARSCHMIDT, R.J., FA
 SCHAMMERT, K.F., SA
 SCHMIDT, K.W., FA
 SCHOENLAU, R.E., FN
 SCHOOLS, N.L., SA
 SCHULER, R.J., SA
 SCHUSTER, J.E., FA
 SCHWENK, R.W., DCFN
 SELLER, R.C., OMSN
 SERGEANT, C.E., SN
 SETZEKIRN, C.E., SA
 PIZZ, R.S., FA
 SEVESTRE, R.H., FN
 SEXTONE, R.J., DCFA
 SELL, C.H., MMFN
 SEYMOUR, G.E., FN
 SEYMOUR, J.C., EMFN
 SHANK, C.E., SA
 SHEREN, F.L., SA
 SHOLL, D.L., MMFA
 SHOOK, J.R., SA
 SHORTER, J.B., SA
 SILMAN, W.V., ICFN
 SIPPURLEY, J.E., ICFN
 SKLBA, E.P., FA
 SKELLEY, H.J., FA
 SKLAR, R.B., FA
 SKORSKI, R. J., FN
 SLAMANS, C.W., SA
 SIATER, W.B., FA

NON-RATED ENLISTED MEN

SMART, D.R., FA
SMITH, A.D., SA
SMITH, D.F., MMFA
SMITH, J.P., FA
SMITH, M.L., SA
SMITH, R.W., SN
SNYDER, C.W., FA
SNYDER, B.E., FA
SPANISH, A.R., SA
SPEER, S.T., FA
SPEER, T.R., SA
SPEICHER, G.R., SN
SPEJNA, R.E., FA
SPENCER, C.R., MMFA
STATES, E.G., ICFN
ST. CLAIR, T.W., SA
STEELE, G.E., ETRSN
STEEDLE, K.P., FN
STEPP, K.M., SA
STEVENS, G.J., SA
STAUDING, K.R., SA
STEWART, W., SA
STOLTE, D.A., SA
STONE, L.C., FA
STORES, C.W., SA
STRAWBRIDGE, J.E., SA
STRUCKMAN, R.R., SN
STULL, J.R., FA
SULLIVAN, T.P., SA
SUTHERLIN, R.M., FN
SWEENEY, W.J., SA
SZCZESNIAK, M.A., FN
TESKE, B.C., SA
THOMAS, T.L., SA
THOMPSON, L.J., SFMSN
THEUMULER, P.F., FA
THUNE, R.D., SA

THURMAN, J.D., MRFN
TIMBERLAKE, J.A., SA
TIMBLIN, D.L., FA
TOMSON, K.E., MMFA
TORO, G.E., SA
TORROS, J.J., Jr., SN
TRAHAN, W.L., FA
TRAUX, A.J., III, FA
TRIBBLE, R.C., SA
TRIPLETT, J.D., FA
TROSLEY, P.J., SA
TROUPE, D.A., SN
TROYER, G.D., Jr., SA
TUCKER, R.C., SA
TYLER, E.H., SA
UMBRINO, R.R., SN
URBANSKI, J., FA
URBANSKI, T.J., SA
UTTERBACK, M.R., FA
VANDERWOOD, R.C., SA
VANCASTER, D.R., FA
VANDELOO, G.G., FA
VANDERJAGT, R.P., SA
VANJAARVELD, B.A., SA
VETTER, G.D., EMFN
VERRETTE, G.E., FA
WAGNER, R., Jr., FN
WALKER, C.E., SA
WALLACE, J.A., SA
WARD, C.N., SA
WARREN, D.L., FA
WARRINGTON, J.C., SA
WATSON, J.M., Jr., DPSN
WEAKS, L.V., SA
WELCH, J.V., RDSA
WELEBOB, M.P., SA
WELLS, G.W., FA

WEST, W.H., FN
WHISMAN, J.L., SA
WHITE, J.A., SA
WHITE, L., Jr., SA
WHITE, P.M., SA
WHITEHEAD, F.C., SN
WHITE, H.E., SN
WHITLEY, S.K., SA
WHITMORE, W.G., FA
WILKINSON, R.V., SA
WILLIAMS, S., SA
WILSON, L.R., FA
WILSON, R.L., ICFN
WIRTH, L., SA
WISE, J.B., DCFN
WOELFEL, T.D., SN
WOHLFARD, R.W., SA
WOLTRLE, P.R., FN
WOMACK, H.M., SA
WOOD, J.E., SN
WOODWARD, C.B., SA
WOOLF, J.R., SN
WOOSLEY, L.W., SA
WRIGHT, C.J., FA
WRIGHT, R.M., SA
WRIGHT, T.C., FA
WRIGHT, W.F., DCFN
YAMARINO, D.M., SA
YEWELL, J.K., FA
YORKS, W.J., SN
YOTTER, C.E., FA
ZALENSKI, J.A., FA
ZANGARA, C.A., SA
ZASTROW, R.C., FA
ZIEGLER, F.E., SA
ZMOLIL, S.C., FA

USS PUGET SOUND (AD-38)

INSIGNIA

The insignia has been designed to embody symbols which graphically depict the mission and capability of the ship, and the region from which her name was derived.

The totem pole was selected for the central figure (or totem if you will) as being the most representative symbol of the Pacific Northwest and the Puget Sound area. It is indicative of the traditions of craftsmanship and artistic excellence for which this region is famous. The totem also serves as an emblem of heraldry linking this ship with the people of the Puget Sound area.

The mountains in the background depict the spectacular snow-capped ranges that frame Puget Sound. The strength and immobility of these mountains personify the unwavering dedication of the PUGET SOUND to her assigned mission.

The silhouette of the destroyer encompassed by the micrometer depicts the repair capability of the ship and symbolically represents the ship's motto, "Standard for Excellence."

The Trident, symbolic of Neptune, God of the Sea, represents the heritage of Naval Sea Power the PUGET SOUND assumes. The nuclear orbits, superimposed over the Trident, signify the sophistication and nuclear technology this ship offers to a modern Navy.

The two stars symbolize the flag of the Commander Cruiser-Destroyer Force, U. S. Atlantic Fleet, which will fly from the main mast of the PUGET SOUND.