

USS RUSHMORE LSD-14



MEDITERRANEAN CRUISE—1963

Keeping the Peace, said our Commander in Chief, is a lonely vigil. Nowhere is this more true than on the Naval ship. Away from home and family for long periods, the bluejacket lives a life that is neither understood nor appreciated by the average civilian. Yet in spite of this, the Navy man goes about his job in a routine fashion, but realizing deep inside that he is contributing to the preservation of liberty.

Again this year, Rushmore deployed to the Mediterranean to carry out American policy in that area. During the four months overseas, the men aboard have stood some long watches, have worked hard to clean up a dirty result of the shipyard. But also we have had some fine times, both on the beach and on the ship.

A naval ship is more than just a hunk of hardware with warm bodies aboard. It is the spirit and energies of many varied officers and men. Each has contributed in some way to the ship and her mission. We hope in this book we have captured an image, however small, of the best of the Amphibs: the Rushmore!



USS RUSHMORE MEDITERRANEAN CRUISE

4 FEBRUARY-5 JUNE 1963



History of the USS Rushmore (LSD-14)

In the eighteen and one half years since her original commissioning, RUSHMORE has lived three distinct lives: Two active, combat-distinguished wartime years in the thick of things in the Pacific; four and one half quiet, out-of-commission years in Pascagoula, Mississippi; and the most recent eleven and one half years operating the Atlantic.

The letters "LSD" in the ship's title represent "landing ship dock". Born of wartime necessity, this new type was designed as a combination dock and landing craft carrier. She is 458 feet long, 72 feet wide and has a speed of 14 knots and displaces from 4500 to 8000 tons, depending on her load. The really unique feature of this type is the 394 foot-long well, which carries her main cargo. By flooding her ample ballasting tanks with sea water, or emptying them, the LSD may be lowered or raised in the water so that the well deck varies from dry to a depth of ten feet of water. From this feature stems the primary mission of the LSD: rapid delivery off an enemy beach of a large number of combat-loaded landing craft.

LSDs are named after historic sites in America. RUSHMORE is named for the Mount Rushmore Memorial in the Black Hills of South Dakota, where a giant sculpture in mountainside stone commemorates four of our greatest Presidents: Washington, Jefferson, Lincoln and Theodore Roosevelt.

Under wartime pressures, RUSHMORE was built in six months in Newport News, Va., by the Newport News Shipbuilding and Drydock Company. Her keel was laid on 31 December 1943; launching was on 10 May 1944; and on 3 July 1944 RUSHMORE was commissioned.

An interesting sidelight of Rushmore's building is that she was originally intended for the British. All original plans and blueprints still carry her expected name, HMS SWORD.

Beginning a scant three months after commissioning, RUSHMORE performed distinguished combat service in the last year of the war in the Pacific, which culminated in the surrender of Japan. She participated in four amphibious landings: Leyte in October 1944; Palawan in February 1945; Mindanao in March 1945; and Tarakan, Borneo in April-May 1945. For these she earned three battle stars on

her Asiatic-Pacific Campaign Medal.

Among RUSHMORE'S many and varied wartime experiences, some are especially interesting and memorable. For her fine work at Leyte and Lingayen in the Philippines, she received two letters of commendation. She steamed a total of 70,000 miles in her wartime life, crossing the equator ten times and the 180th meridian six times. For the Borneo landing, RUSHMORE carried Australian troops of the famed "Rats of Tobruk" Battalion which helped chase Rommel out of Africa. The ship carried every manner of cargo, of which perhaps the most unusual of her career was a 137 foot long Japanese submarine, transported from Samar, Philippine Islands to San Francisco.

In late 1945, in the wake of the war, RUSHMORE earned the Navy Occupation Service Medal with Asia clasp for operations in occupied Japanese waters. The American Campaign Medal and World War II

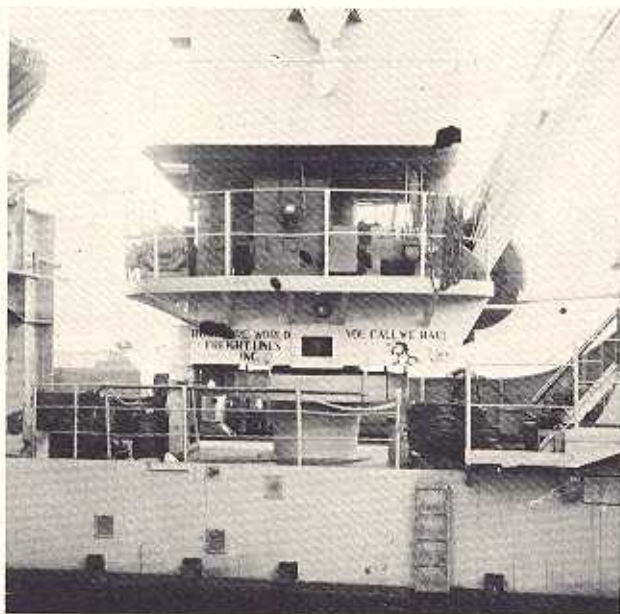
Victory Medal complete the total of four ribbons she now displays on her bridge.

Next came decommissioning in August 1946, and mothballing in Pascagoula, Miss., the beginning of four and one half years of the silent waiting for which the reserve fleet was intended.

The Korean War brought on the third and present phase of the RUSHMORE life, with recommissioning in Charleston, S. C. on 21 September 1950. The ensuing eleven and one half years, busy ones spent ranging the Atlantic, have seen the ship log another 162,000 miles to add to the 70,000 of World War II. About half the ship's time has been spent at sea

during this period. Caribbean exercises, Reserve cruises, Mediterranean deployment, and Arctic trips for resupply of the Dew line bases, sum up the story of these years. The ship's hull has been ice-strengthened for these Arctic trips and of all the fleet ships, none but icebreakers can match the RUSHMORE'S six consecutive summers of Arctic experience. Her last two years have been spent operating in the Mediterranean and Caribbean areas.

This past spring she took part in Operation Demolix which was viewed by President Kennedy and Operation PHIBEX in Vieques. The past summer was spent in Hoboken, N. J. in the Bethlehem Steel Shipyard undergoing a so-called FRAM overhaul.



Our Proud Motto

COMMANDING OFFICER



Commander Joseph W. ADY was born in Colorado Springs, Colorado and attended Southern Methodist University and Washington University of St. Louis. He was commissioned in April of 1942 and served throughout the war as flight deck officer aboard the carriers USS CORE (CVE-13) and USS INTREPID (CV-11).

Since then Commander ADY has served both afloat and ashore in such billets as Executive Officer of the USS R. A. OWENS (DDE-827) and as Commanding Officer of the USS BASSETT (APD-73). Ashore he has served as Inspector Instructor for Naval Reserve Training Center, Poughkeepsie, N. Y., Operations Officer of the Amphibious Operational Training Unit and as Commanding Officer, U. S. Naval Schools Command.

Prior to becoming Commanding Officer of the RUSHMORE, Commander ADY served as Executive Officer aboard the Landing Ship Dock PLYMOUTH ROCK (LSD-29) a unit of Amphibious Squadron Twelve.



EXECUTIVE OFFICER



CDR Henry J. Lyon was commissioned an Ensign in the Naval Reserve upon his graduation from the U. S. Merchant Marine Academy in 1942. During World War II he served in the Merchant Marine and Army Transport Service and saw duty in the Pacific, Atlantic, and Mediterranean war zones. He obtained his Master's License in the Merchant Marine.

In 1950 CDR Lyon was called to active duty on the staff of COMSERVRON 4 and since that time has steamed on an oiler (USS Salomonie) a heavy cruiser (USS Macon) and several ice breakers. His shore duty has involved special weapons and he has also been both a student and on the staff of the Naval War College. CDR Lyon became our Executive Officer in August 1961. He pinned on his silver leaves during the Med cruise, and was relieved shortly after our arrival in CONUS. Good luck to him in his new billet!



DEPARTMENT HEADS



LT HENRY - FIRST LIEUTENANT



LT NARDUCCI - SUPPLY



LT TAYLOR - ENGINEERING

LT MUMFORD - OPERATIONS



LTJG MINCH - NAVIGATOR





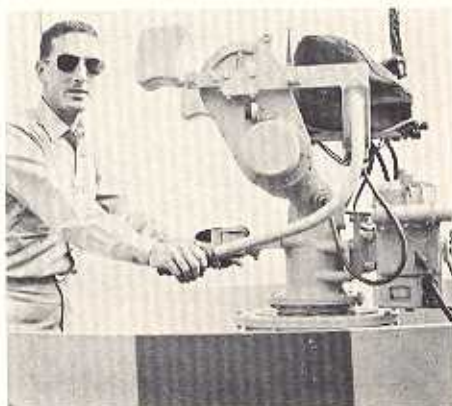
LTJG ARRASMITH



LTJG STAMER



LTJG BROOKS



LTJG CUSHING



ENS HALLOCK



ENS BRANN



ENS GASS



ENS SCHNEIDER



CWO4 MULKINS



CWO2 DOLAN
CWO2 TERRY

DIVISION OFFICERS

EMBARKED OFFICERS



1ST LT BRAGAN



LTJG HENDRICKS



LTJG WISNEWSKI



1ST LT DURHAM



1ST LT ROSE AND 1ST LT GRAHAM



LTJG THOMAS AND LTJG CSER



CURRY, BMC

CHIEFS



SNYDER, BTC, BARRETT



CASE, SKC



TOTH, MMC, WILKINS, ENG

CHIEFS QUARTERS PROVIDES
GOOD FOOD...



AND QUIET RELAXATION





BACK ROW L TO R: DROZD, GRECO, ARMSTRONG, JOHNSON, STEELE,
BOSIN MULKINS, DUTTON, BURWELL, VITALE, LANGDON, ARNOLD
FRONT ROW: BARTALOTTA, CUTIE, VAN POLL, CRAWFORD, RAGAN,
FURLONG, CRONK, KAUFMAN, PEARO

FIRST Division



STEELE THE HEAD MAN



AND ONE OF HIS MEN





PREPARATION FOR...



ANCHORING



JOHNSON HANDLES THE PASSAGEWAY



VITALE, PEARO AND DUTTON
DURING LIGHTER MOMENTS



WHITE WITH THE STANDARD
DECK EQUIPMENT



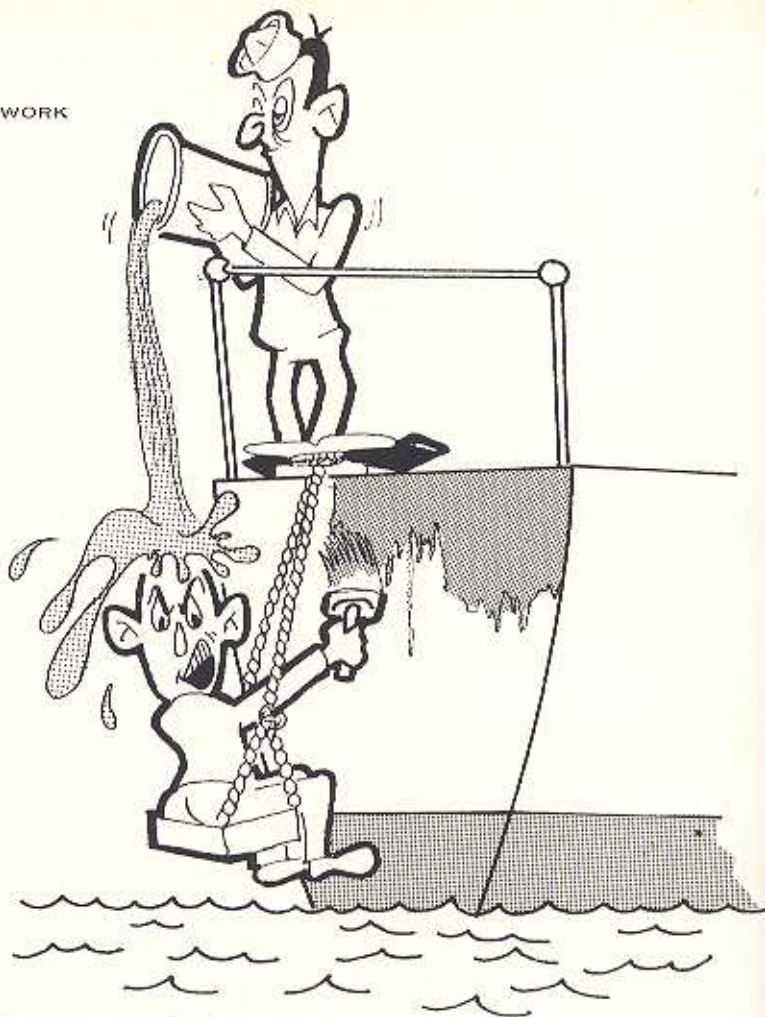
COMSTOCK AND CLARK AND MORE PAINT



THE REWARDS OF HARD WORK



THE BARBELL CREW



2nd Division

BACK L TO R: BRINKMAN, FARRINGTON, GREGORY, GATELY, BOS'N MULKINS,
HOWARD, MILLER, REBMAN, REDFIELD, WEBER
FRONT: PADROZA, BORELLI, DELANO, LWARENCE, LASKOWSKI, PATNAUDE,
HICKS, WALTERS

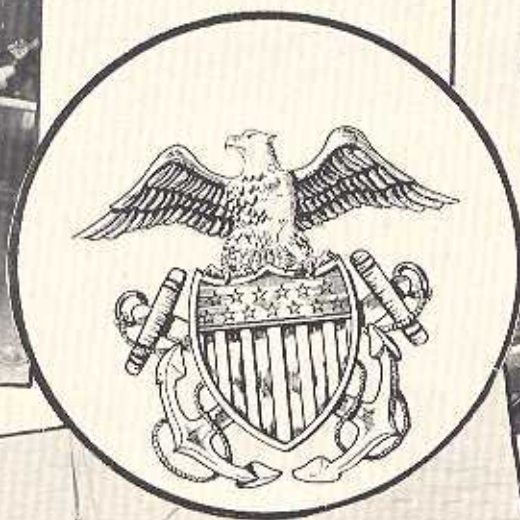




WHO WOULDN'T SMILE?



PATNAUDE SUPERVISES...



THE WORKERS (?)



NOW SMILE FOR THE CAMERA

JUST WAKING?



"HEY, BRING THE BOAT OVER HERE"



BACK L TO R: JOHANNSEN, PARROT, HODEL, HOLDEN, CHIEF CHESHIRE,
LTJG BROOKS, CHIEF SMITH, UPCHURCH, LONIGAN, ZAMORA

FRONT: MAYO, HICKS, DASHER, ERSEK, TUCKER, HICKS, KELLY, NAUGHTON

A Division



THE PUMP ROOM WATCH



AN ACCUSING FINGER IS
POINTED AT ERSEK



THE FLAPPER VALVE REPAIRMAN...



AND PARTS MANUFACTURER

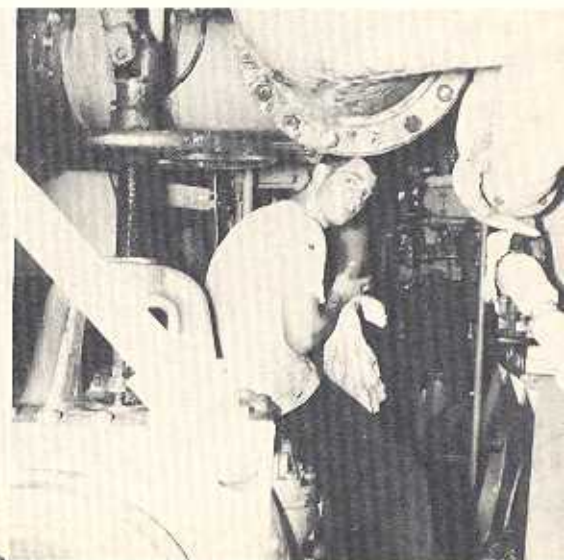
WHO'S A LIBERTY HOUND?

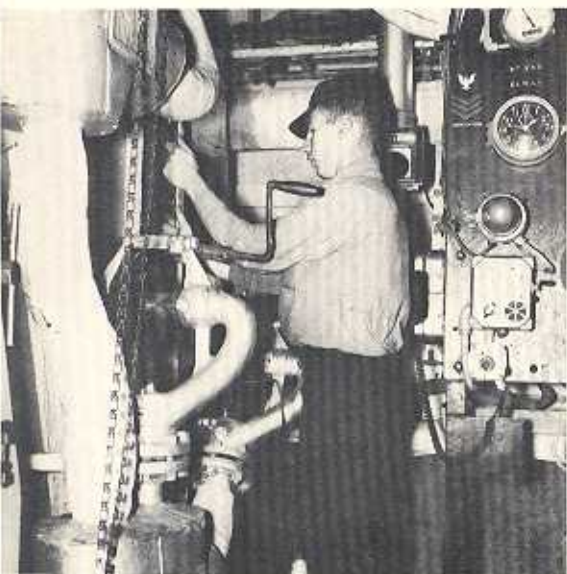


THIS LITTLE BABY GETS
14 GALLONS TO THE MILE!

ONLY 103 DOWN THERE

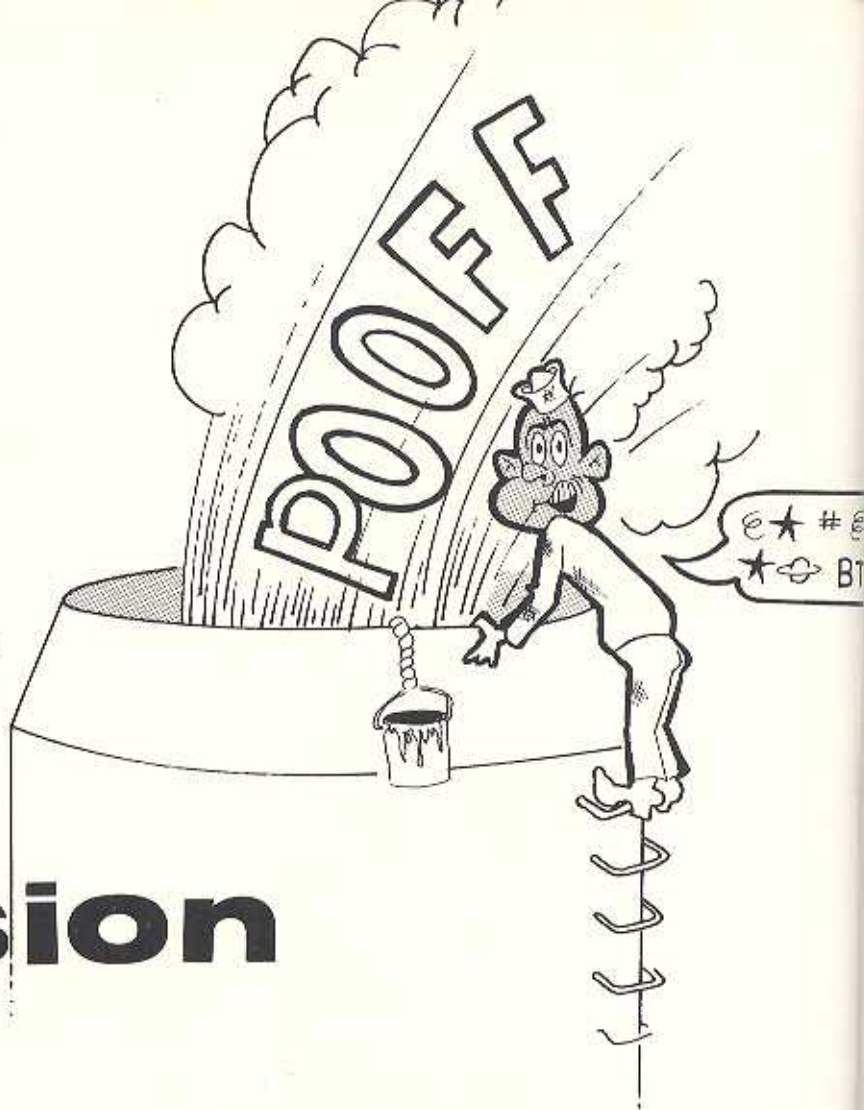
THE UNIFORM OF THE DAY
DOES APPLY HERE!





THIS PRODUCES...

THIS!



B Division

BACK L TO R: LEE, MCCARTY, GLENN, FERNHOUT, CHIEF SNYDER, MR. TERRY
ROBERTS, ROUNDY, ROBINSON

FRONT: BRINKWORTH, PRITCHARD, FUSCO, TARTAGLIA, WINSTEAD
TUFTS, HILL, BANNON





STEAM PRESSURE...



IS WATCHED CLOSELY



"SOUNDS JUST LIKE A BOILER TO ME..." ROBERTS



MEISE, "...BUT WE'VE GOT ALL THE BURNERS IN."

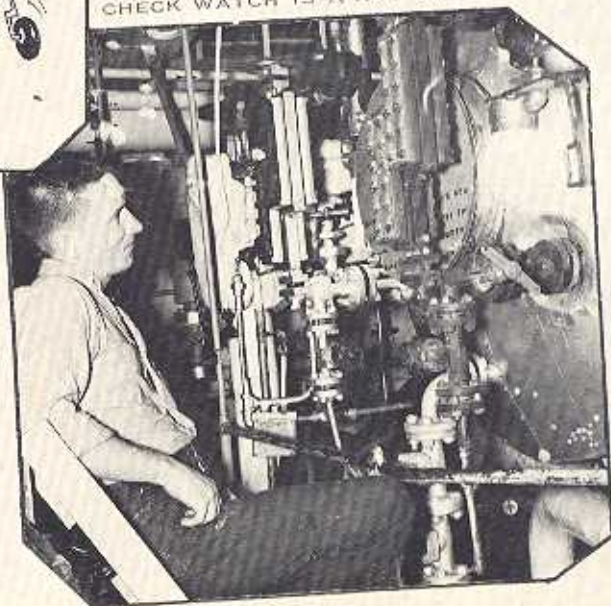


YES, MASTER!

TURN TO (?)



CHECK WATCH IS A HOT ONE





BACK L TO R: MOORE, ARNOLD, SPRING, RIEDER, HOFFMAN, CHIEF WILKINS,
STAGGS, MR. DOLAN, POIRIER, LYNCH, KENNY, CARL

FRONT: WHALEY, SANTA BARBARA, WARREN

ELECTRICAL Division



LYNCH AND WARREN IN THE
SHOP



KENNY, MOORE AND A TYPICAL
VENT MOTOR

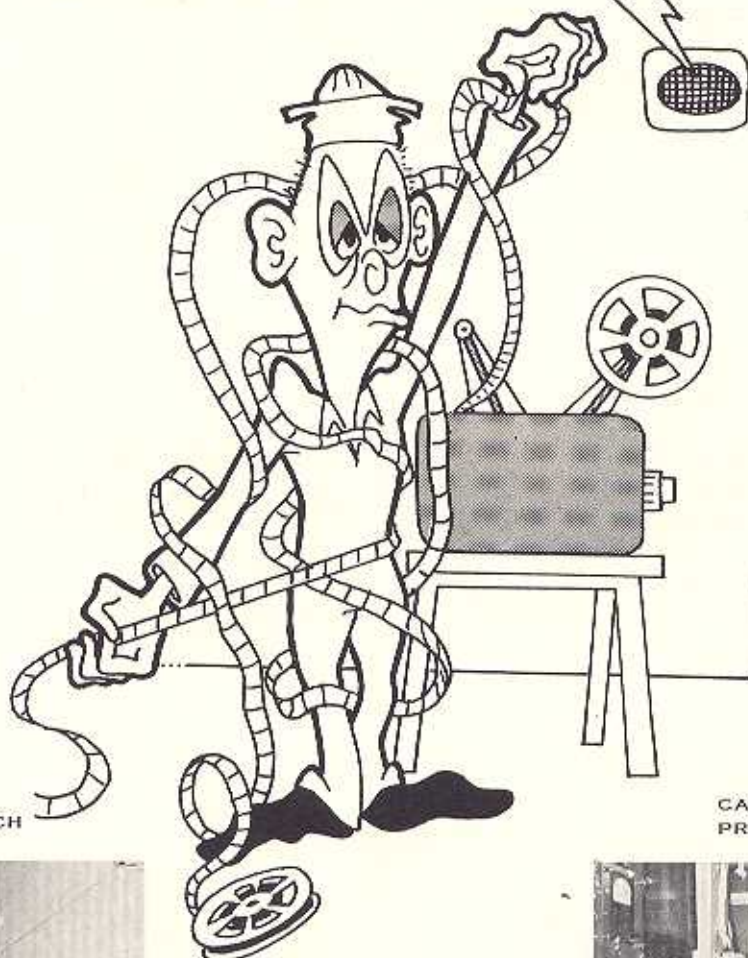


POIRIER CHECKS
OUT CIRCUIT IN
BALLAST CONTROL



SANTA BARBARA
READY TO WORK

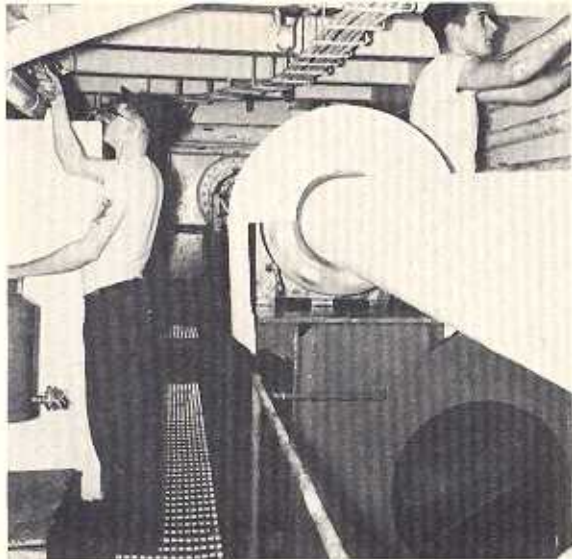
NOW THE MOVIES WILL COMMENCE
ANYTIME WITHIN THE NEXT
TWO HOURS



THE GENERATOR WATCH

CARL AND MOORE - HIGH
PRICED HELP





PAINTING THE SHIP'S REC LOUNGE



THIS IS A CHEWOUT?



M Division

BACK L TO R: JULIAN, KRACH, BROUSSEAU, CHIEF TOTH, MR. TERRY MAHONEY, PAGE, DOSS

FRONT: PALMER, DEATON, MARTINEZ, CARINO, HOFFER





"WATCH THE LOWER LEVEL
WHEN I TURN ON THIS STEAM"



"UNDER HERE WE HAVE COLD BEER"



3

"...AND IF YOU FIND METAL
DON'T TELL ANYONE."



BUT, CHIEF, THERE IS NO VALVE IN HERE

HANGING BY THE THUMBS—A TYPICAL
ENGINE ROOM PUNISHMENT



THIS LITTLE BURRO MADE 220 TURNS





BACK L TO R; PITTS, HUDSON, HARTMAN, BRADY, CRANE, MR. STAMER, DAVIS
GRANT, CLOTHIER, BROWN, HAWLEY

FRONT; PHILLIPS, CORBAN, BARKER, RIDENHOUR, TUCKER, HORN
FOWLER, HEADD, WILLIAMS, JENNER, TENNENT

REPAIR Division



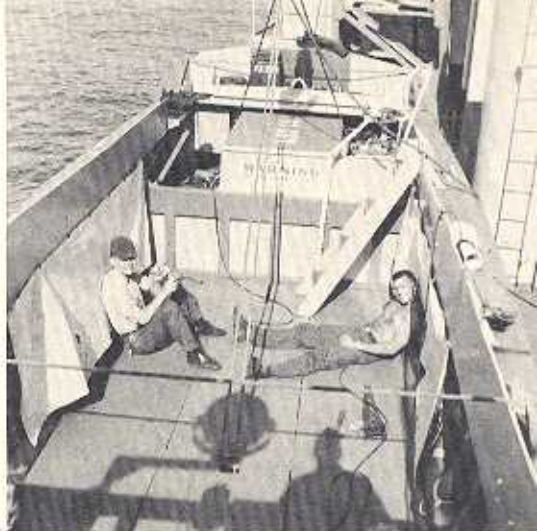
TOP LEVEL SUPERVISION
PRODUCES FIRST RATE WORK



WELL, HELL, SOMEONE HAS
TO FIX THEM



DUE TO THE HEAVY WORK
LOAD...



WE WILL BE UNABLE...



MURPHS ISSUES TOOLS



HAWLEY AND PITTS
DO THE PLANNING



MY GOD, IT FLOATS!

CRETIAN

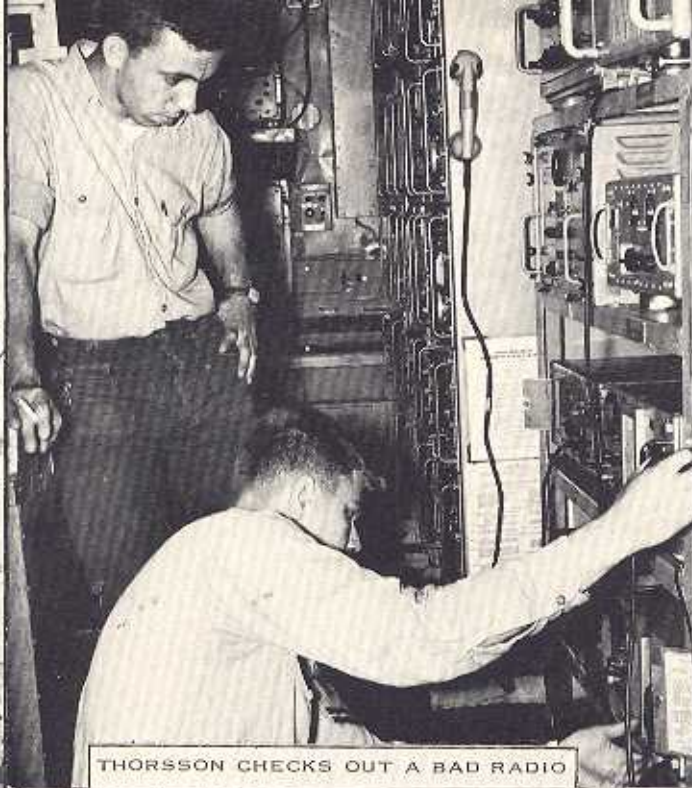


LEST WE FORGET

CRUISER



HE SAYS TO...NEVER MIND



THORSSON CHECKS OUT A BAD RADIO

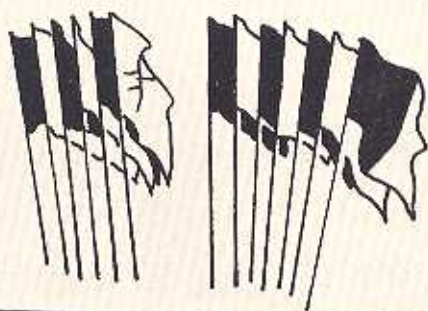


YOU'VE HEARD OF BEING HUNG FROM THE YARDARM?

OPERATIONS



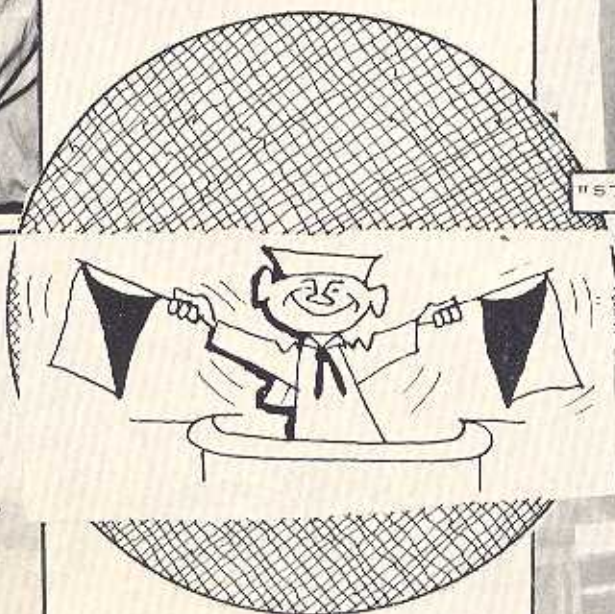
PRYOR AND SEPMOREE LOOK FOR A FORGOTTEN MESSAGE



"STILL 1000 FEET TO THE GUIDE, SIR"



"ANOTHER STRIKER ON THE LIGHT"



WRITING HOME WHILE ON WATCH?





HE STILL ISN'T TOO CLOSE
TO A WOMAN



DEPARTMENT

BACK L TO R: THORSEN, DOMBROWSKI, GALLEGER, PROBST, MOSSER, CLARK
FRONT: HINKLE, DAVIS, YORK, HERRINGTON, BAIER, IRISH





THE WARDROOM HEAD MAN



FENNER MAKES A POINT WITH PECK



THE FINEST IN FLATOPS

IN SUPPLY WE USE KNIVES TO
CUT EGGS...

AND FINGERS!

GIBSON SHAKES OUT SOME
OF THE GREASE



MORRIS RUNS A TAUT
STORE





NO ONE ARGUES WITH THESE FELLERS



I'VE GOT IT FIXED NOW SO THAT ONLY CUPS COME OUT!

SUPPLY DEPARTMENT



BOUCHE



MADELLO

BACK L. TO R: BASA, CHIEF CASE, LT NARDUCCI, SIRMANS, SIGGERS, SCHULER
PECK, MORRIS, PROCTOR, HAWKSWORTH, GARCIA, TORTONA, BROOKS
SMITH, WILLOUGHBY, GIANUNZIO, PACE, ENS BRANN

FRONT: MADELLO, AURE, FENNER, BROWN, BOUCHE, HOLLESTELLE, NELSON





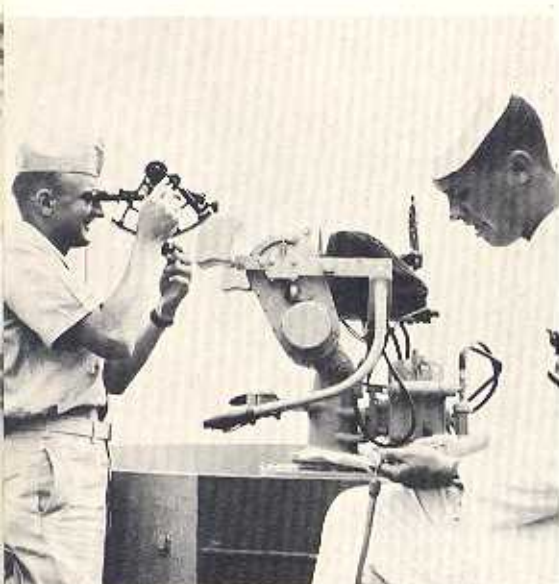
BACK L TO R: NATION, BAIRD, MR. MINCH, MR. GASS, JONES, COX, TAYLOR
FRONT: BOYD, GEORGE, SELF, MORRISON, RENNICK, SMITH



" BUT MR. MINCH,
THERE ISN'T ANY BUOY
AT 340 "

H, N, X

I'LL HAVE OUR COURSE
PLOTTED IN A MINUTE,
CAPTAIN.



SO THE SUN IS FUNNY
THROUGH A SEXTANT?



THE EVER-EFFICIENT CMAA

Division



CHRISTY, CHIEF CURRY, VARNEY



MORRISON, YEOMAN EXTRAORDINARY



UP, I SAID, UPI



PHONE TALKERS INC.

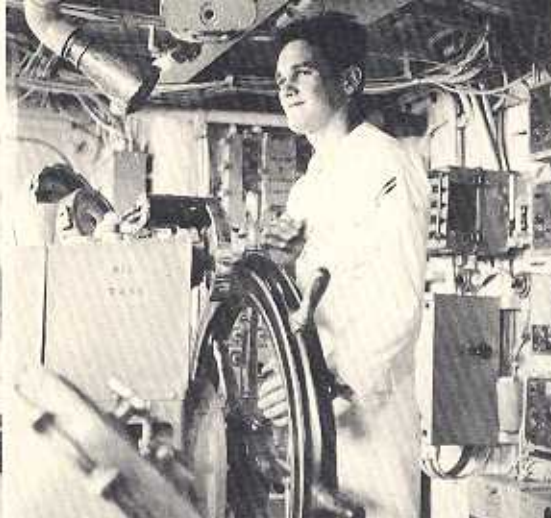


1. READY FOR BATTLE?
2. THE HARD LIFE OF THE CORPSMAN
3. AND THIS IS VERY GOOD FOR HANGOVERS
4. BUT I KNOW WE MAILED IT, SIR
5. VARIED DUTIES IN SICK BAY





SLYE AND LEAZIER



BORDEAU TAKES THE WHEEL



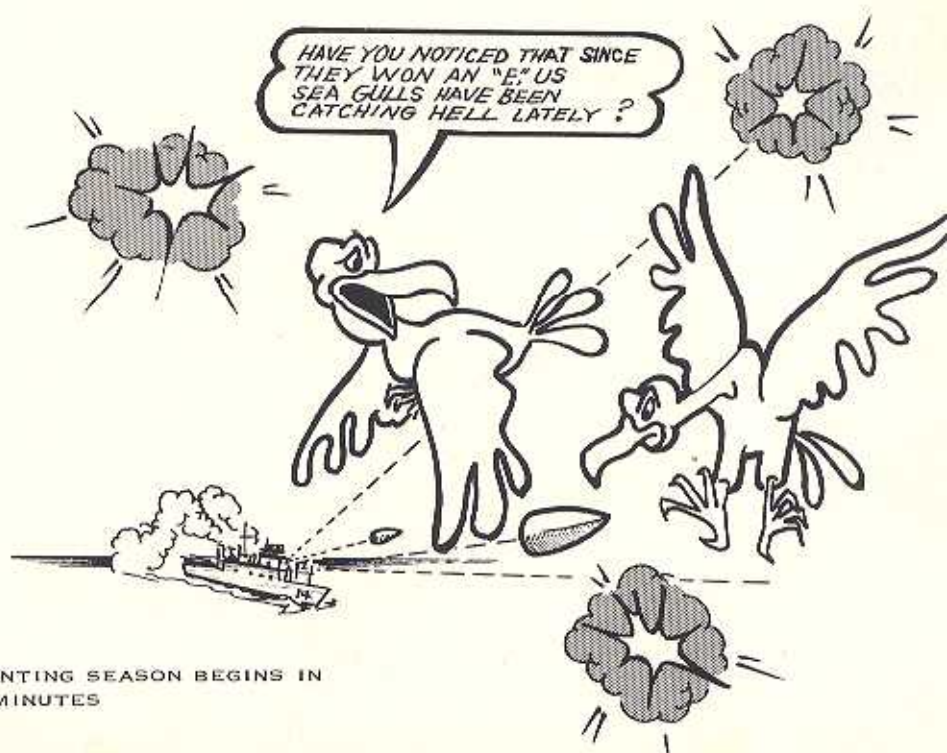
GOSS CHECKS THE WINNING DIRECTOR

3
rd



BACK L TO R: LTJG CUSHING, LEAZIER, BORDEAU, SLYE
ANTALOCY, ENS SCHNEIDER
FRONT: GOSS, BRAENDER, MERRITT

D
iv



HUNTING SEASON BEGINS IN
5 MINUTES



BACK L TO R: TOWNER, PITTMAN, BRAZELLE, MAJORIANA, HENDERSON, TAYLOR
DALLAS, JONES, RICKARD, HAMMAN, WOESSNER, RYAN, PALM,
GLASBURN, HEINRICH, MR. CSER, WILCOXIN, MR. WISNEWSKI

FRONT: REEVES, LEWIS, LARSON, RIVALDO, NELSON, BODISH, MCCORD
MINOR



PREPARATIONS FOR ARRIVAL

BEACH MASTER UNIT 2 DETACHMENT



CLOSE QUARTERS





DID THE BEACHMASTERS REALLY PLANT THE MINE?



THE GANG



READY FOR THE CAT O' NINE TAILS

THIS WAS A PARTY!





THE WARPING TUG CREW



WARNER AND FRITCHIE

ACB 2



DET

BACK L TO R: JENSEN, BOYER, WARNER, COUCH, MR. HENDRICH, HELLER, COURTOIS
PRUCHAZKA, JONES, BOSTON, DUGGER, MINASI

FRONT: HOLT, SWEENEY, SINGLETARY, GREENE, WATSON, NELSON, SHOCKLEY
SHEARS, FRITCHIE





THIS IS WAR , SON.



COUGH WITH NEW FRIENDS



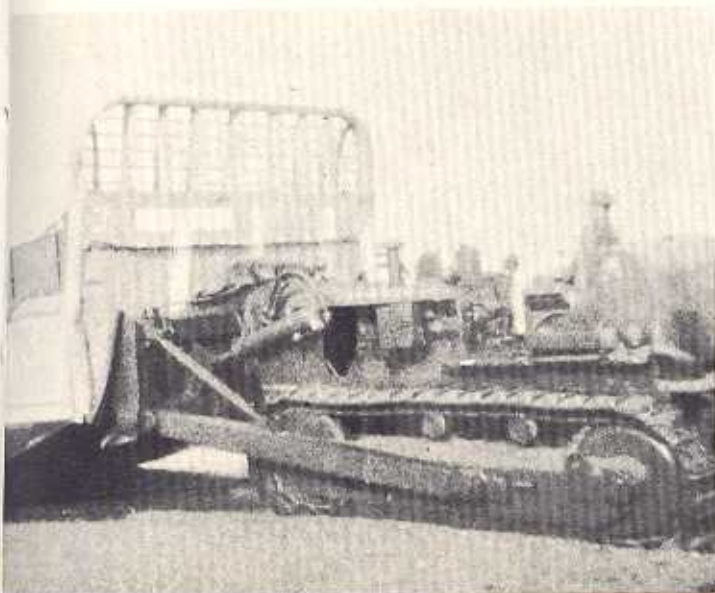
DID YOU SEE THAT GUY ON
THE U-BOAT WHEN I KNOCKED
OVER THE PAINT?

HELLER TOUCHES UP HIS TRUCK



CRUNCH!

NOT EVEN MANTLE WINS THEM ALL





FARLEY AND KEMP
SHOW RESULTS OF
USING BRASSO FOR
CREAM



SMITH



PAPP SMILES FOR
CAMERA

A C



BACK ROW L TO R : HAMMER, (NOT IDENTIFIED), SEGURA, CHAPPELL, POOLE,
SCARLATA, COLLIER, SMITH, HUBBARD, BUCHANAN, ANDERSON, PAPP
FRONT : DRAUES, VANDERKOLK, WOODARD, RINACA, CARRIER, LAWSON,
FARLEY, STOKES

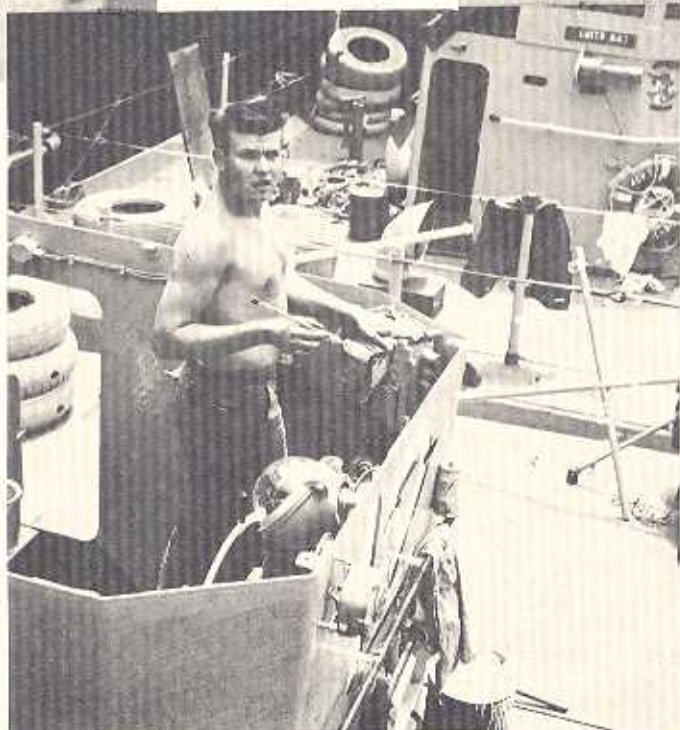


SCARLOTA CUTS
IN NUMBERS



HUBBARD SWEEPS
DOWN

U - 2



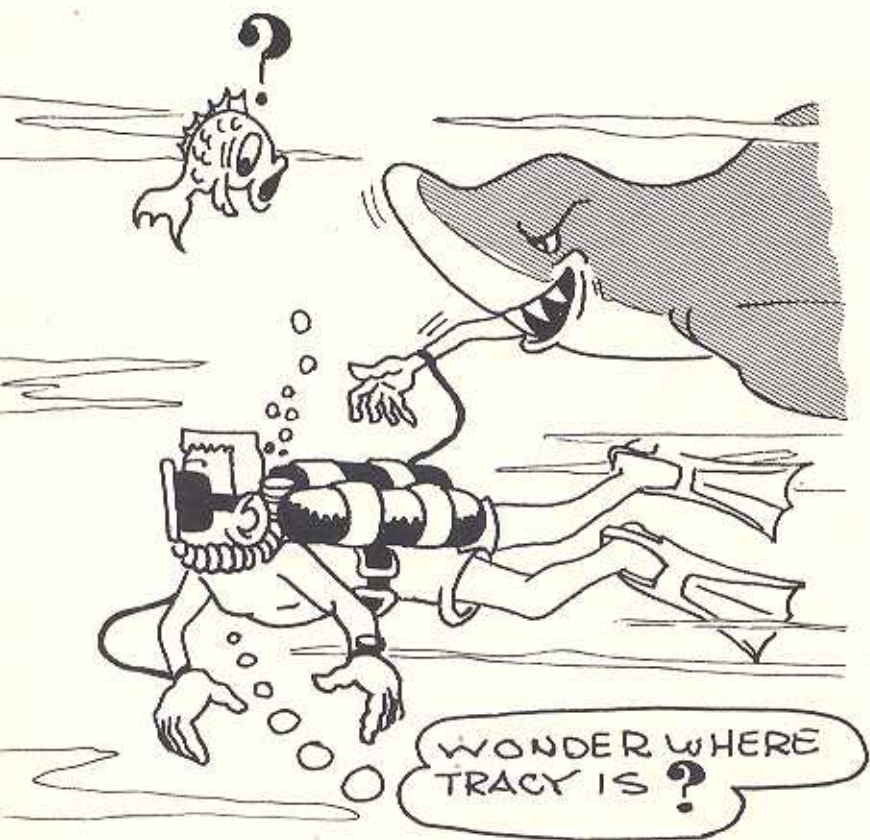
TO SOME PEOPLE A
PHOTO IS A SHOCK





BACK ROW L TO R : JONES, TRACY, CHIEF BARRETT, MATHIS, LTJG THOMAS,
GRADY, BAKELAAR, FOX, WEIR, DUNTHORN
FRONT : SIEDEL, GOSSER, MC QUEEN, GARNETT, SMITH, ZMUDA,
TUURE, MORAN, MARCINKO

UDT



A POOL TABLE ON A BOAT?



CHIEF BARRETT RECEIVES GREEK
JUMP WINGS.



MR. BROWN EXPLAINS EQUIPMENT
TO ALLIED OFFICERS.



GOSSER—CARTOONIST EXTRAORDINARY.



NO SIR BOS'N, WE DON'T HAVE
ANY PAINT IN HERE.



22



ICE CREAM MAKES WEBBED FEET.



BIG JOHN.



LOOKS MORE LIKE A CRAB THAN A FR

THE MARINES WERE ALSO ABOARD ...



WHERE DO WE GO?



SHIPBOARD LIFE FOR MARINES WAS STRENUOUS...



OCCASIONALLY!



SUN AND TALK



MUSCLE HOP



TODAY,
I'M ALL
THUMBS!



THE GATOR

AMPHIBIOUS FORCE, U. S. ATLANTIC FLEET

VOLUME XXI, No. 6

LITTLE CREEK, VIRGINIA

FEBRUARY 8, 1963

AT AN EARLY MORNING HOUR WITH A
NEARLY DESERTED PIER, RUSHMORE
GOT UNDERWAY

PhibRon Two Ships Deploy For Amphib Duty in Med

Six ships departed Norfolk Feb. 4 to assume duty as the swift-striking amphibious arm of the Sixth Fleet in the Mediterranean.

The six ships, composing Amphibious Squadron Two, loaded approximately 2,000 Marines and a detachment from Marine Helicopter Squadron 262 at Morehead City, N. C., before steaming for their five-month deployment in the Mediterranean.

the Mediterranean.

Included in this movement are the attack transport Chilton, attack cargo ships Thuban and Uvalde, dock landing ships Rushmore and San Marcos, and tank landing ships Traverse County and Wahkiakum County.

In addition to the embarked Marines, the ships carry detachments from Tactical Air Control Squadron 22, Assault Craft Unit Two, Underwater Demolition Unit Two, Beachmaster Unit Two, Amphibious Construction Battalion Two, and a minesweeping unit.

Captain Thomas F. Howe, Commander Amphibious Squadron Two, is directing the deployment from his flagship Chilton. Upon arrival in the Mediterranean, he will shift his flag to the amphibious command ship Mount McKinley, from which he will direct the amphibious striking force during training operations with the Sixth Fleet.

Lieutenant Colonel N. R. Stanford, Commanding Officer of the Second Battalion, Eighth Marine Regiment, will direct the embarked Marine landing force.

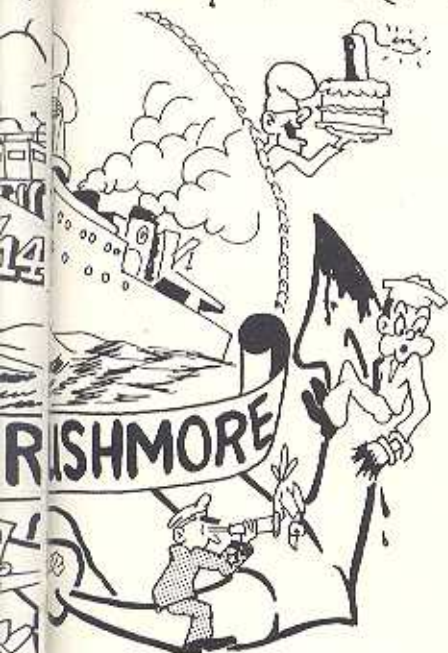
The Squadron is scheduled to return in early June.



Mediterranean



em Cruise - 1963



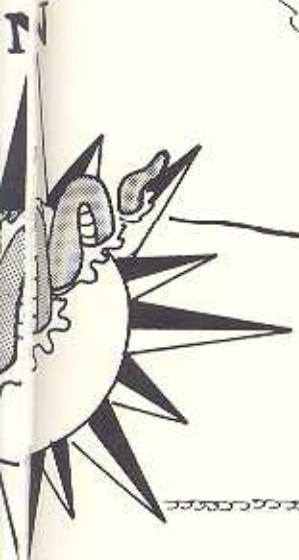
PATOOIE



ROTA
SARDINIA
NAPLES
CRETE
RHODES
MARMARIS
IZMIR
ATHENS
GOLFE JUAN
CORSICA
BARCELONA
ROTA

TURN OVER
OPERATIONS
ITALY
OPERATIONS
GREECE
OPERATIONS
TURKEY
GREECE
FRANCE
OPERATIONS
SPAIN
TURN OVER

...AND OUR PEOPLE TO
PEOPLE PROGRAM IS ---
BLAH BLAH



LIFE ABOARD



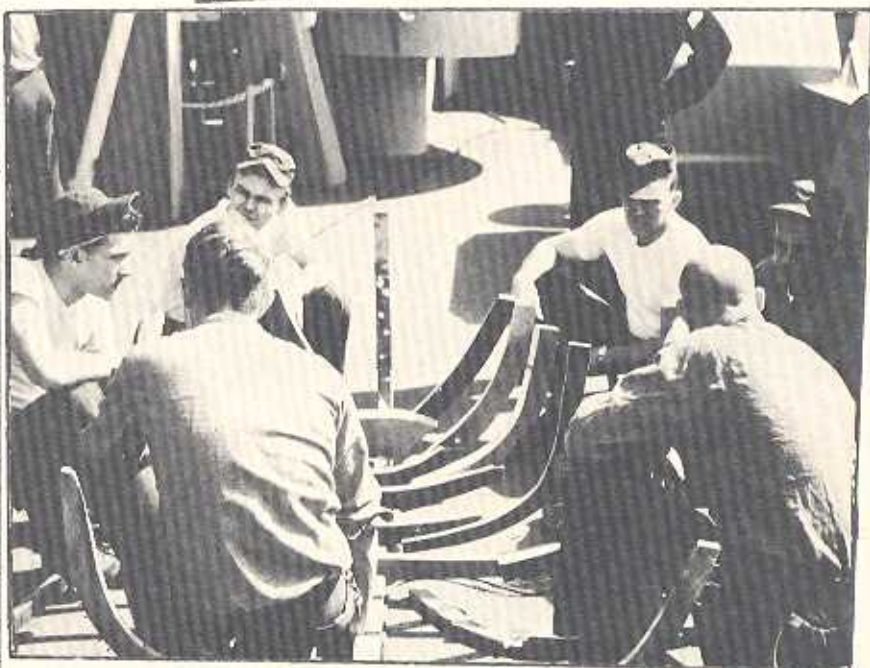
**TURN TO
A VARIETY OF
IN THE
DIVISION**



ARD SHIP



**D TAKES ON
Y OF MEANINGS
E DIFFERENT
SIONS**



A

CONTINU



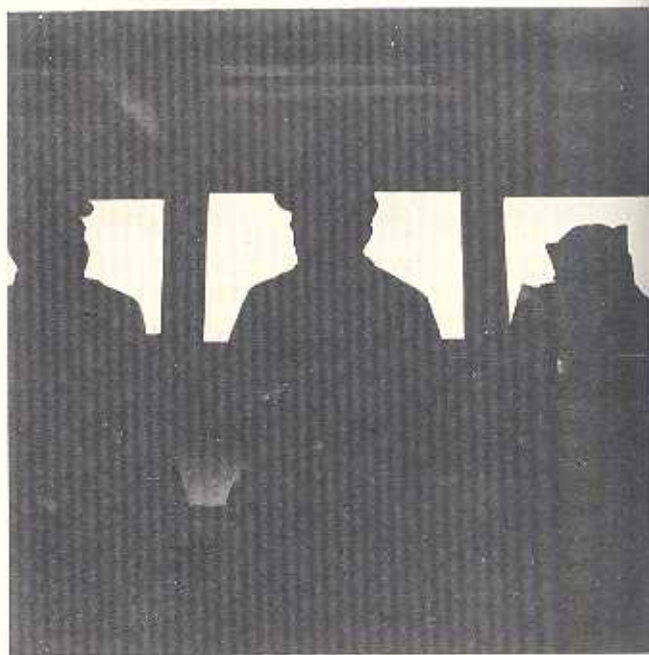
SO THIS IS WHAT GOES
ON IN AFTER STEERING



HARRASSED?

OF WATCH STANDING

THE MESSENGERS LIGHT...



THAT MEANS THE MID WATCH

UDUS

ROUTINE



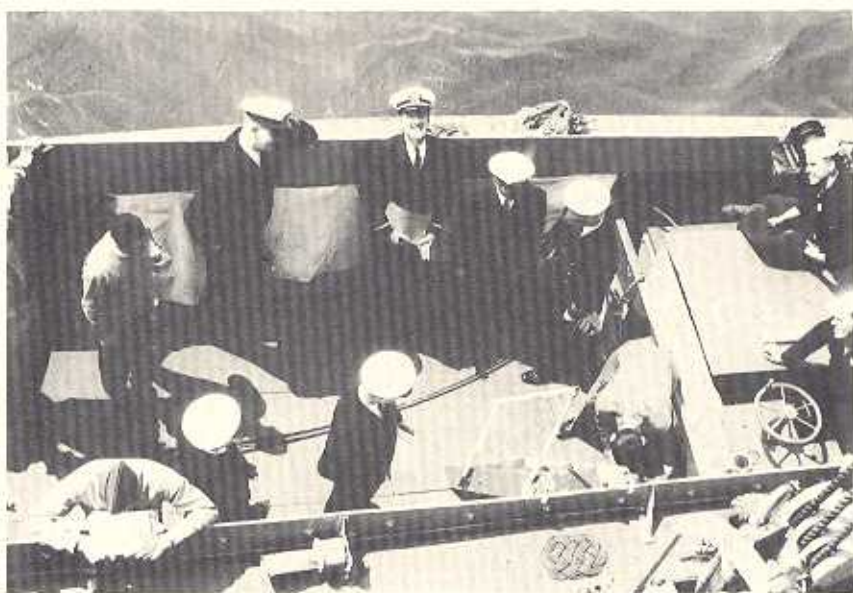
"HEY, YOU CANT DUMP THAT
OVERBOARD IN PORT!"



"THEY JUST SECURED THE
SHOWERS?"

AND DAILY LIFE

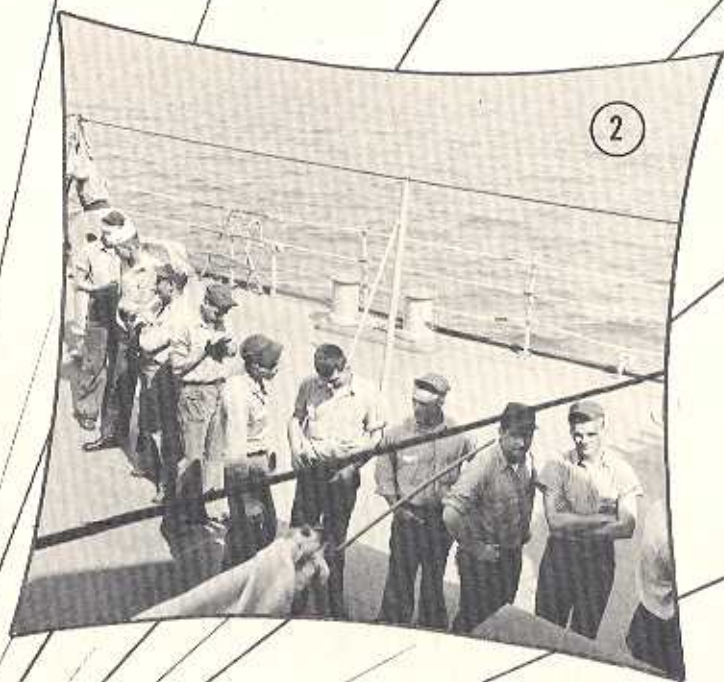
SOME PEOPLE EVEN SLEEP
DURING 8 O'CLOCK REPORTS



INNUMERABLE BOAT RUNS
(WITH THE SALESMEN)



1



2

1. FROM CHOW...
2. TO PAY
3. FROM GEDUNKS...
4. TO TOOTH PASTE

There are lines for Everything

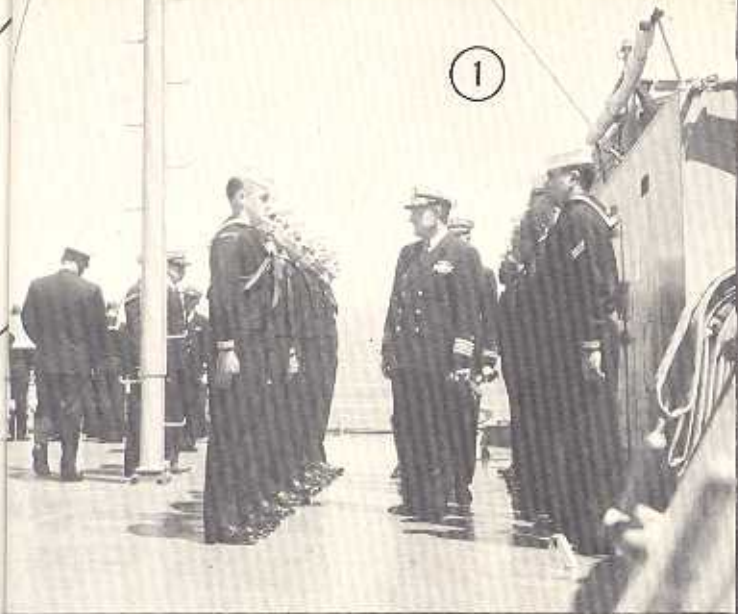


3



4

1



2



1. SUPPLY
2. OPERATIONS
3. DECK
4. ENGINEERING



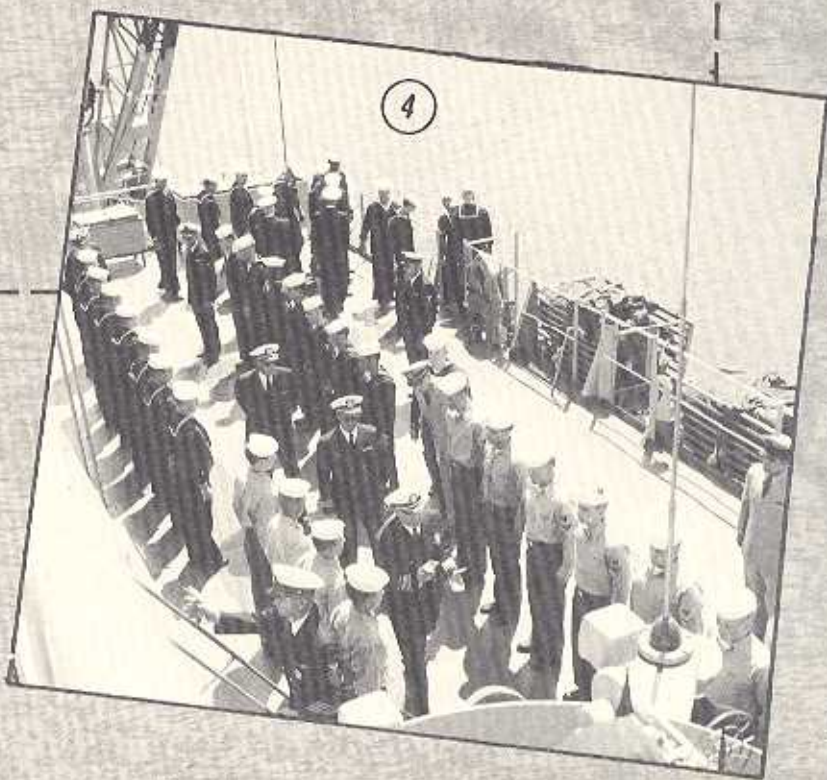
INSPECTIONS

SHOWED US AT
OUR BEST

3



4



GENERAL QUARTERS



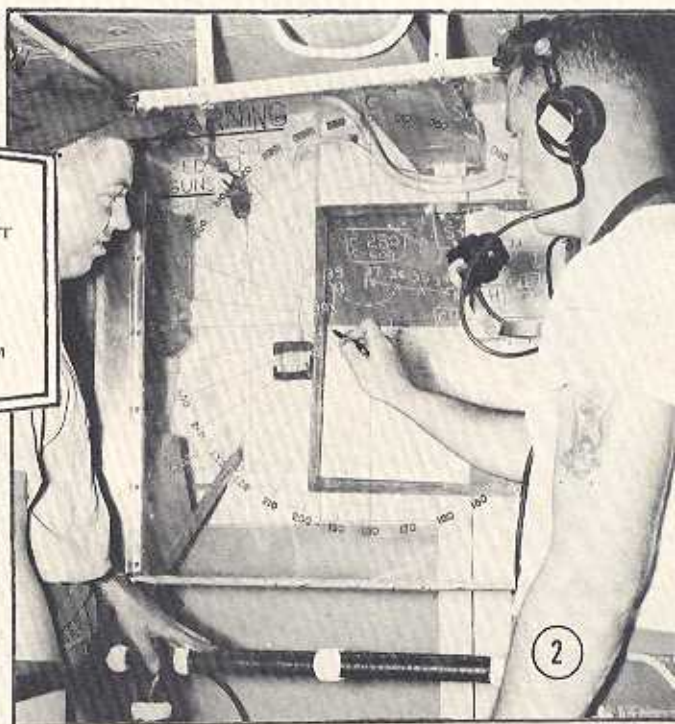
1. MR. TAYLOR AND CHIEF BLACKWELL OPERATE FROM MAIN CONTROL.
2. MR. MINCH CHECKS NATION'S STATUS BOARD.
3. EVEN THE WARD ROOM IS MANNED.
4. MT 41-A READY CREW.
5. ANOTHER MEAN TEAM.



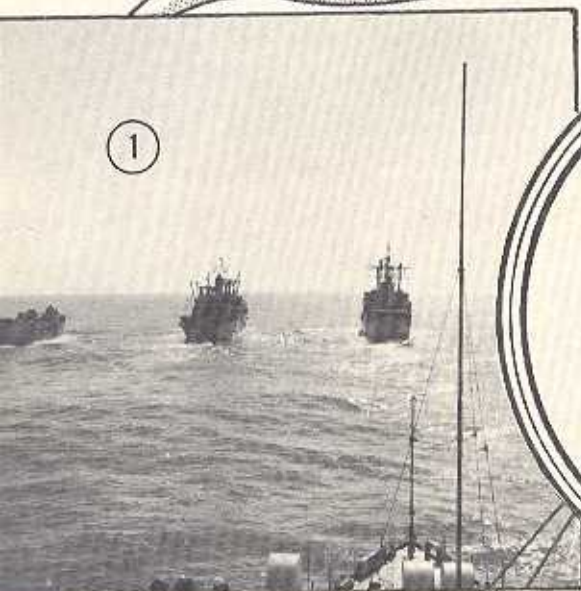
TRAINED US FOR BATTLE



1. MOREHOUSE AND HICKS ACTUALLY IN BATTLE DRESS.
2. BROWN PLOTS A NEW CONTACT AS HICKS LOOKS ON.
3. FIRE DRILLS WERE A MUST.
4. WHEN THE BOARD GETS TOO HOT WE...
5. MR. DOLAN'S REPAIR 3B TEAM INVADES A SMOKE-FILLED COMPARTMENT.

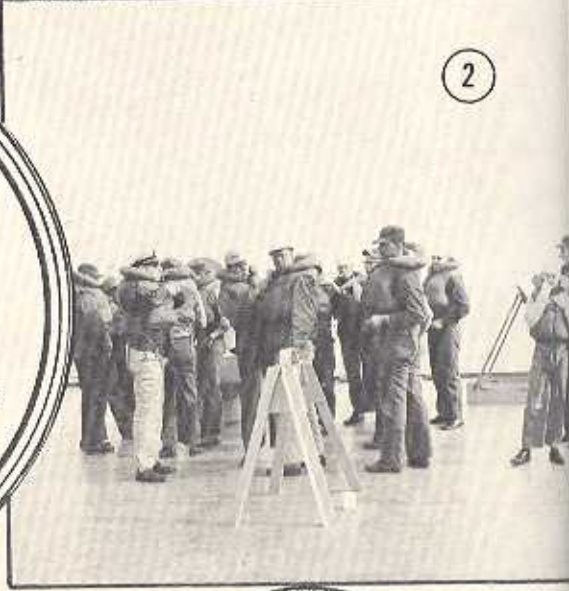


REFUELING



1

1. IN THE WAITING LINE.
2. DECK DEPT. STANDS BY.
3. CAPTAIN ADY BRINGS HER ALONGSIDE.
4. WHITE STEERS A STEADY COURSE.
5. SELF HANDLED THE SHIP TO SHIP PHONE.
6. THE HOSE COMES OVER.
7. CHIEF SNYDER SUPERVISES THE CONNECTION.
8. THE LONG WAIT.



2



3



4



5



6

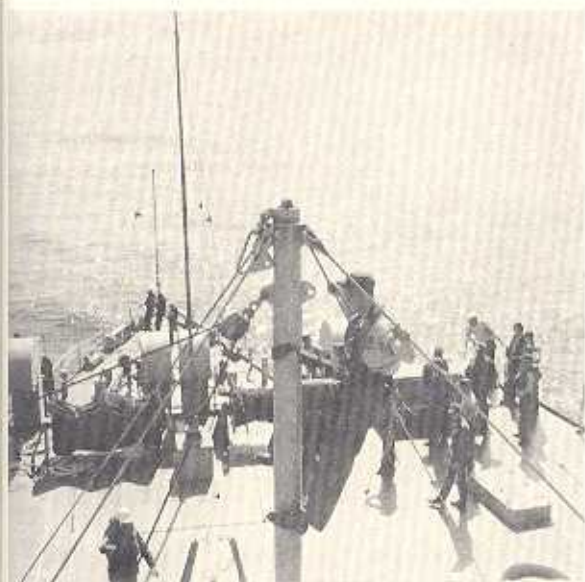


7



8

REPLENISHING



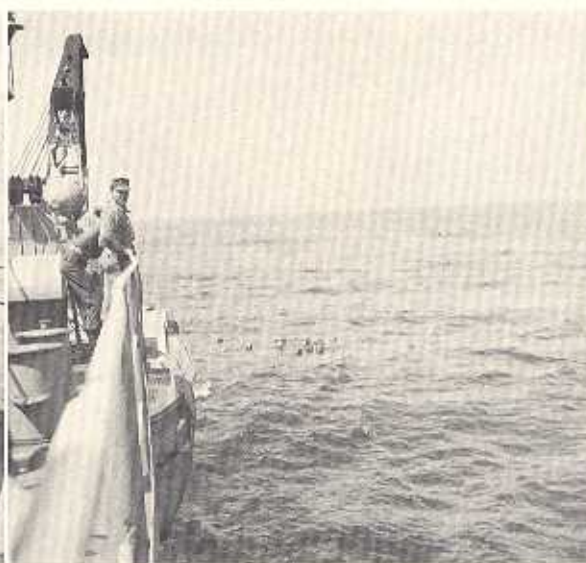
ANTALOCY MAKES THE
HI-LINE CONNECTION
ON THE KINGPOST



HEAVE AROUND



CANDY AND COKE ARRIVE



SOME LOADS DIDN'T
MAKE IT...



BUT MOST DID



THE LINE IS FORMED...



BOXES ARE PASSED...



AND STOWED BELOW

AMPHIBIOUS

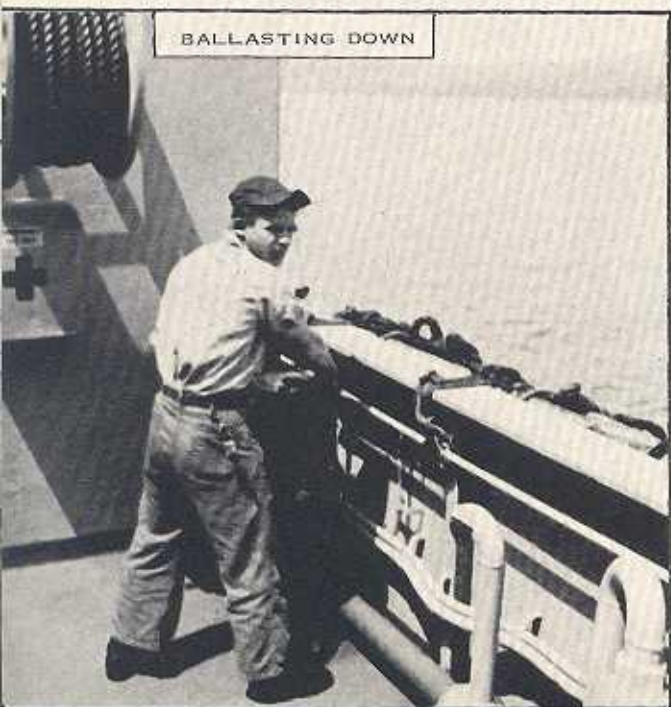
the ship's

BEACHING OUR BOAT



HIGH LEVEL SUPERVISION

BALLASTING DOWN



AND BRINGING IT BACK ABOARD



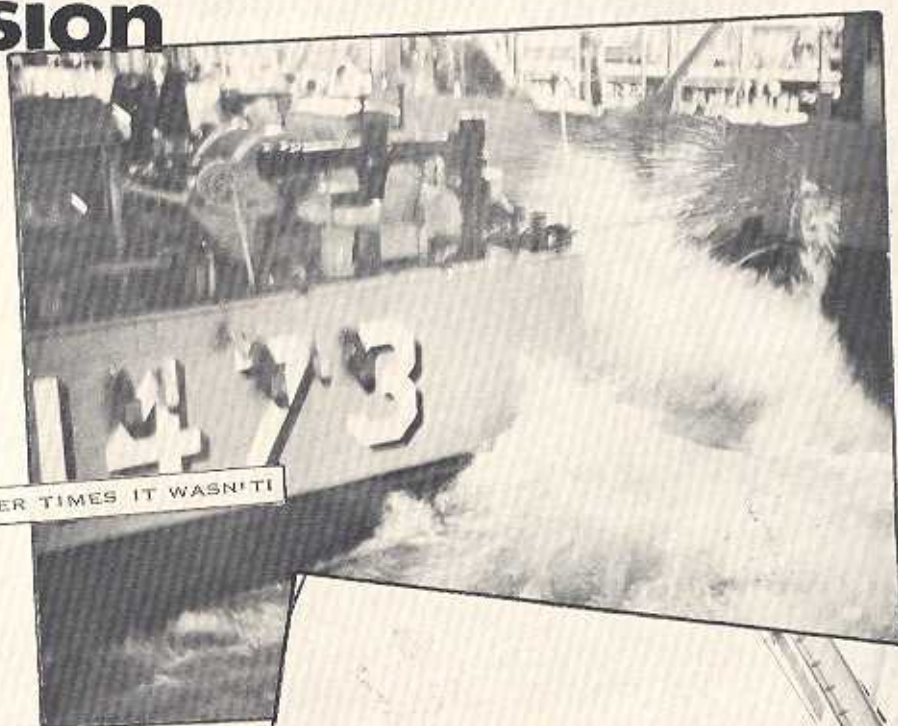
PERISCOPE VIEW

OPERATIONS

primary mission



SOME DAYS THE WELL
WAS CALM...



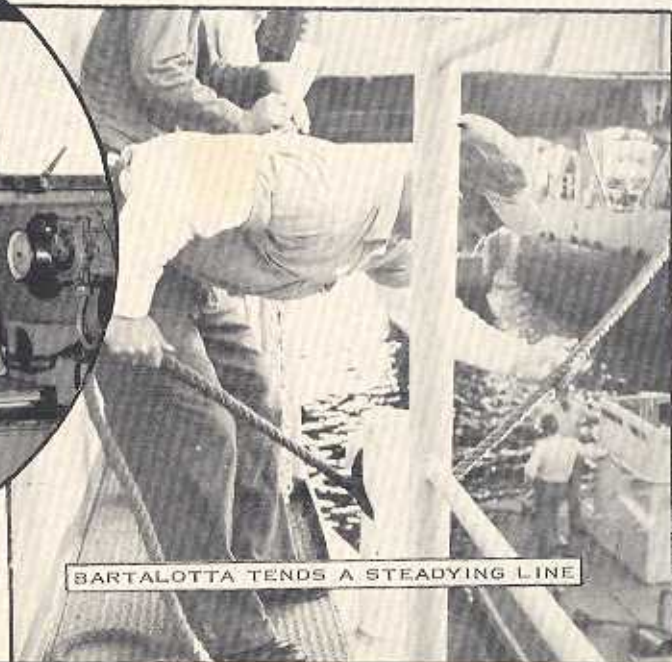
...OTHER TIMES IT WASN'T!



DECKEROOS LOWER A SIX-BY



COORDINATION ON THE BRIDGE



BARTALOTTA TENDS A STEADYING LINE



GENERAL VISITING



SAILORS ACTED AS GUIDES...



FOR MANY VISITORS



AND THE KIDS...

THE MARINES STOOD BY THEIR HARDWARE



GOT A BIG KICK

IZMIR TURKEY 14 APRIL



40-MM WERE A REAL SOURCE OF INTEREST...



AS MR. CUSHING DEMONSTRATES



WHAT ARE THEY LOOKING AT?



ALL THE VISITORS...

WEREN'T LITTLE BOYS!



Despite the hard work



SOME WROTE HOME



OTHERS WATCHED THE MOVIES
IN THE WARM BREEZE



"PLAYING FOR FUN ONLY, SIR"



THE ADONIS CLUB



"THERE'S GOOD LIBERTY
OVER THERE, SON"

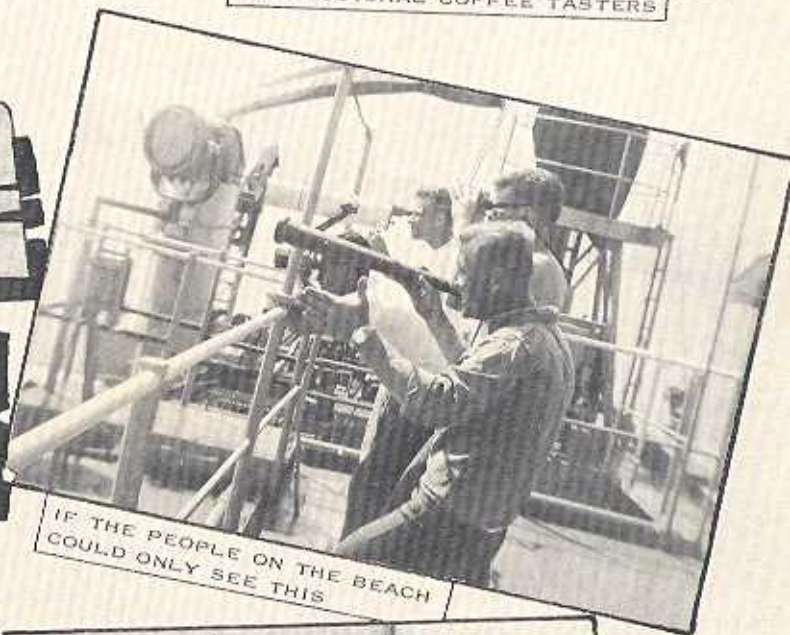
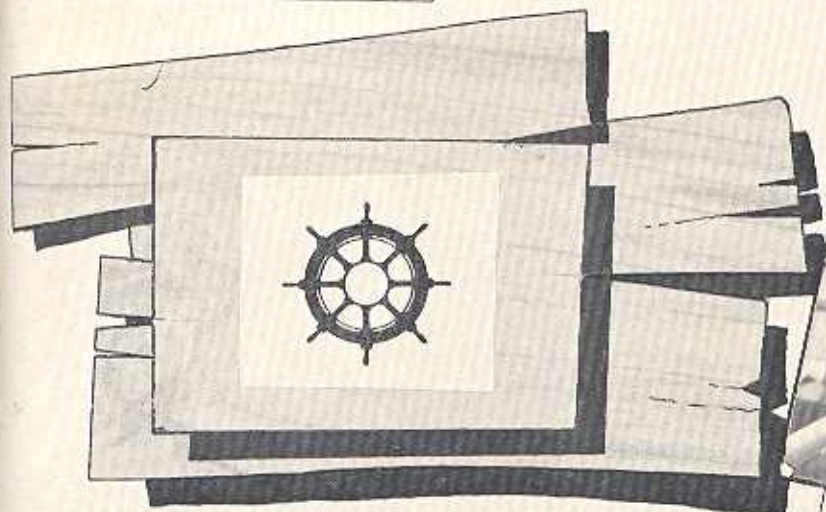
there was time to Relax on Board



SOME GOOD MUSIC MAKERS



PROFESSIONAL COFFEE TASTERS



IF THE PEOPLE ON THE BEACH
COULD ONLY SEE THIS

THE CHALLENGE OF BINGO



FOR SOME CONTEMPLATION
WAS RELAXATION

IN CANNES WE EVEN...



DESPITE MANY LOVELY
CREATIONS.....
THE BATHING SUITS WERE
THE MOST POPULAR!



HAD A FASHION SHOW



HERE COMES ANOTHER DOLL...



A LITTLE CHUBBIER...



NO, IT'S MEISE!



THERE WERE A LOT OF OGGLERS...



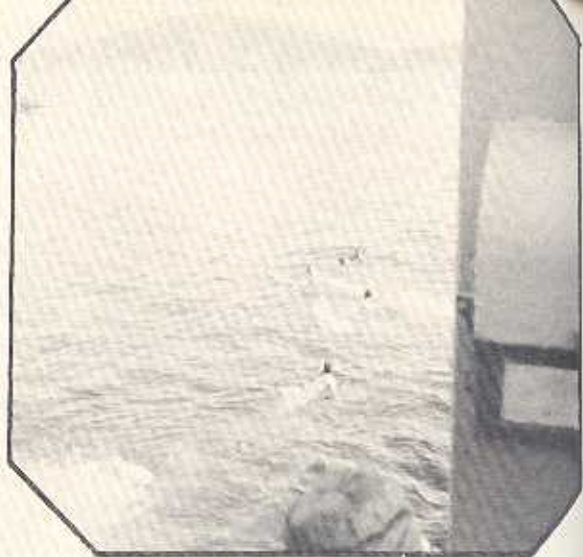
AND A FEW DANCERS



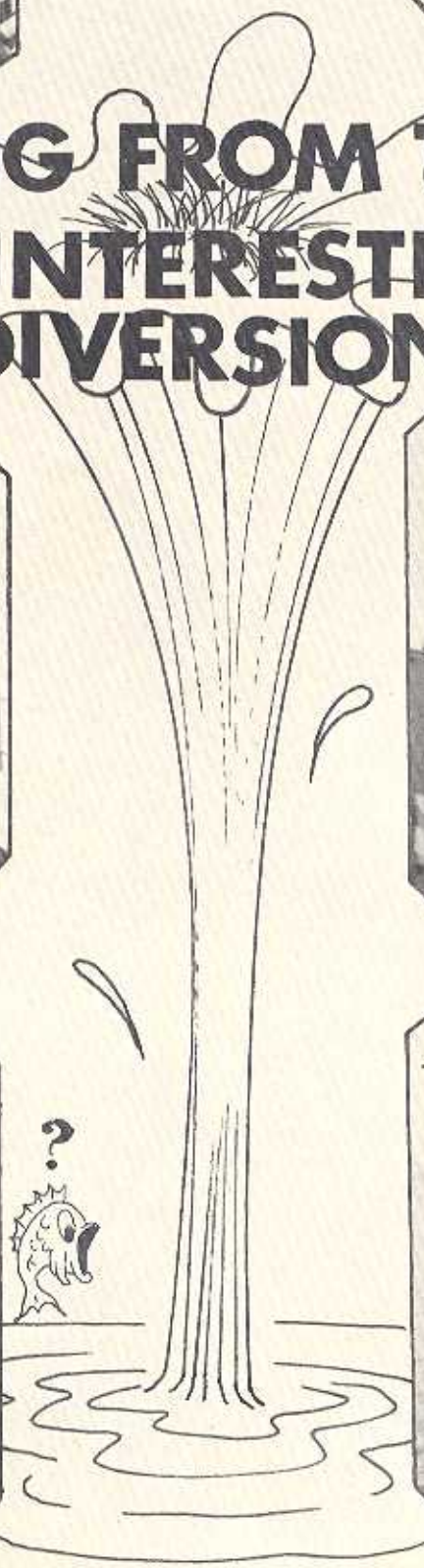
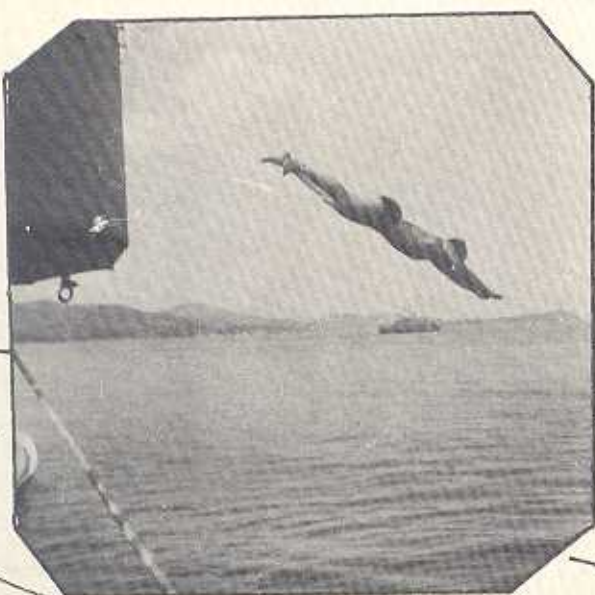
CATCH THE WIGGLE!



THE WHOLE GANG



SWIMMING FROM THE SHIP WAS AN INTERESTING DIVERSION



Andalu

**SALA DE FIESTAS
NIGHT CLUB**

Gincol, 3

Téléphones { 2-31-60-38
2-21-82-44

BARCELONA (2)



CABARET
NIGHT CLUB

**The
"Cyrano"**

26, Rue Miquadler
CANNES

Tél. 39.84.41
(8)

us, 9



a las 21'30 h.

**Grandes Espectá
de Variedad**

I. B
K. park Fuar ve
Turizm İdaresi
Makbuza

Nº 718356

Seri :
H

La Buena Son.

Nº 01746
AYUNTAMIENTO
BARCELONA
PUEBLO
ESPAÑO

*Andalucia
de Noche*

**"BAR"
THE BOURAS**

OP. VOS ST. GEORGE

"ON THE BEACH"

ALL THE
LARGE BOTTLE

SPECIALITÀ IN INDU-
MENTI DI ANTILOPE

Creacio
ART

Via Layetana, 72, 3.

SPEZIALITÄT IN
WILDLIEDER



ONE : 39.29.00

ON à NICE
alles-aux-Herbes
de la Cathédrale)

MÊME MAISON à EVIAN
Quai Baron de Blonay
(En face la lac, à 50 mètres du casino)

new **maxim's**

vous présente

SON SPECTACLE DE NUMÉROS ÉBLOUISSANTS

VARIÉTÉS

TANTAISIE

TRIP-TEASE

NTEURS
HONIQUE

Servicio público de billetes y billetes de Barcelona
Situación: ALQUILAR SILLAS Y SERVICIOS
DE MESA dirigidos a J. M. DAY
Nº 039341
Billete personal e intransferible. Válidos para el turno
espaldas, permitiendo todo derecho al levantarse. Con-
servar a disposición de los empleados que lo soliciten

SA

50 cts

CASINO
MONTE CARLO

TOURISTE

SALONS ORDINAIRES

VALABLE POUR
UNE SEULE VISITE



THE WAIT AT THE QUARTER DECK



AND THEN THE WONDERFUL RIDE IN



A CHANCE TO GET A GOOD MEAL...

LIBERTY

A Different to each



AND SHOP...



OR TAKE PICTURES



A CHANCE TO DRINK A BEER...



OR SIT IN A PARK

CALL Meaning Man



SOME ENTERTAINED OTHERS

THERE WERE BICYCLES TO RIDE



AND OLD FAMILY FRIENDS TO MEET





KENNY, LANGDON, SPRING, HICKS
AND BARTON PAINT BOYS HOME
IN BORNOVA, TURKEY



OTHERS HELP OUT AT ELEMENTARY
SCHOOL AFIDNE, GREECE



GOOD WILL

MANY SAILORS AND MARINES VOLUNTEERED THEIR
TIME AND EFFORTS TO HELP PEOPLE LESS FORTUNATE
THAN OURSELVES



THE TOWNSPEOPLE AND SAILORS AT AFIDNE!
A SUCCESSFUL PEOPLE-TO-PEOPLE ADVENTURE



IRISH LED PROTESTANT SERVICES



LTJG CUSHING MINISTERED TO THE CATHOLICS

✚ RELIGIOUS SERVICES ✚

UNDEFEATED BASKETBALL TEAM

'Rest Easy Contenders'

The championship threat that's been bugging the contenders for the Force Basketball Championship is gone!

The dock landing ship Rushmore left for the Mediterranean Monday, with their unbeaten basketball team embarked.

The ship's cagers posted a 6-0 record in the Intramural League prior to their deployment. With this record, second-place Rushmore was certain to be a Division III contender for the championship. However, due to their departure, Rushmore will not compete in the tournament scheduled for next week.



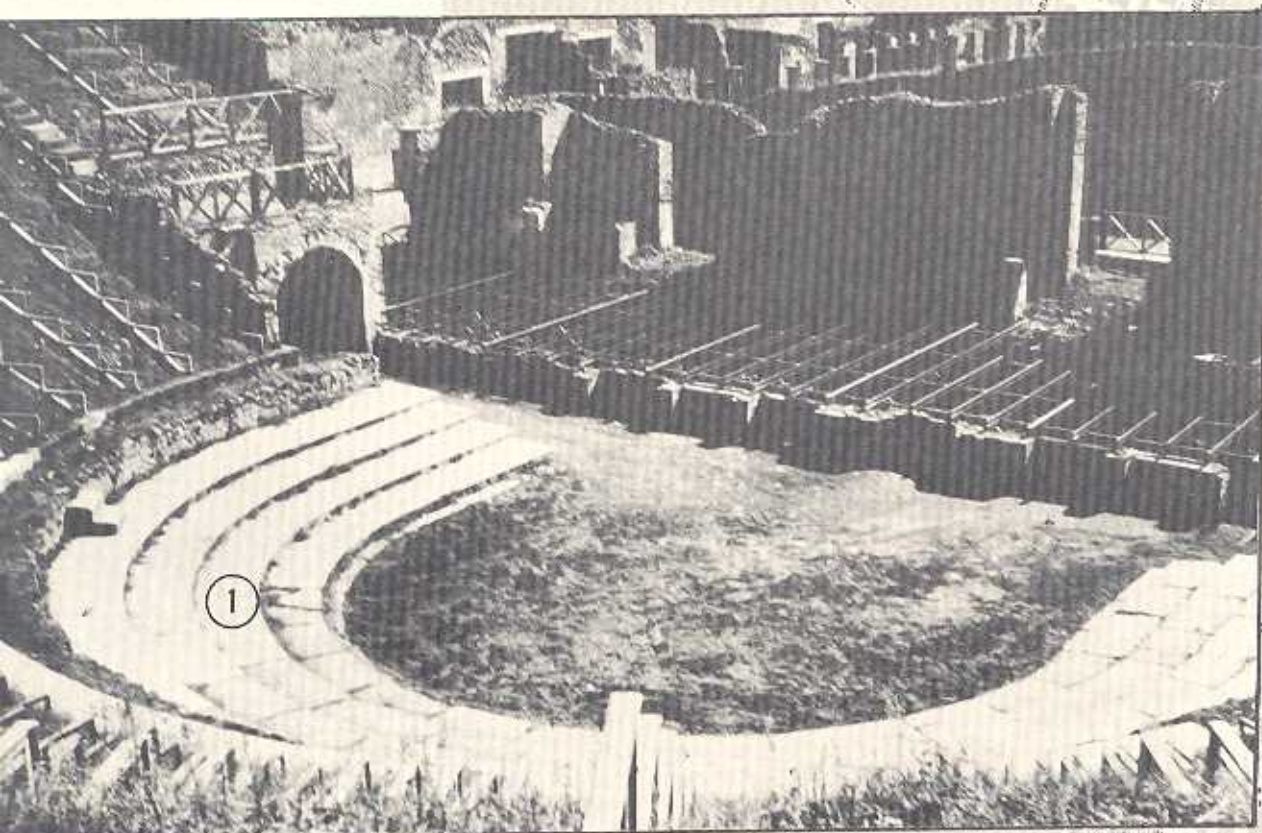
BACK ROW LEFT TO RIGHT: PHILLIPS, PECK, NYHOLM, GATELY, SCHULER
FRONT ROW LEFT TO RIGHT: LTJG MINCH, LT MUMFORD, HICKS, FENNER

Rushmore Wins Cage Tourney

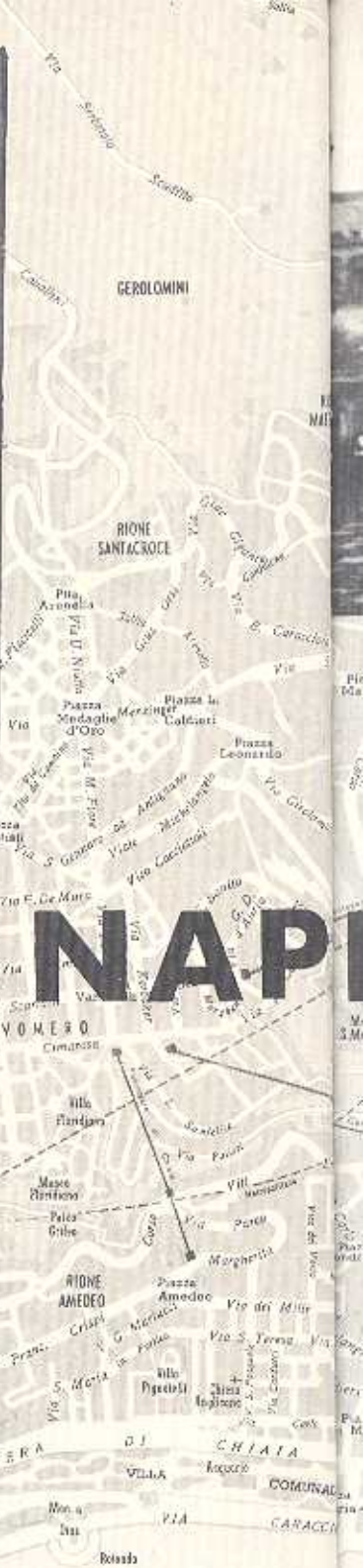
The dock landing ship Rushmore left for the Mediterranean last February with an undefeated record in the Force Intramural Basketball League, and it seems their basketball mastery hasn't been hurt by the deployment.

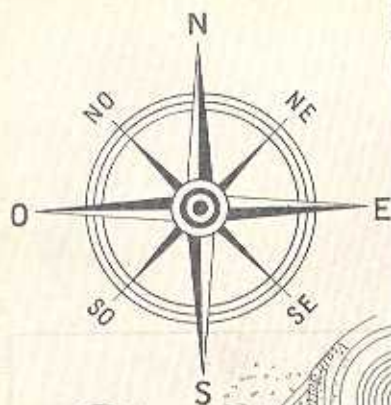
On Sunday, March 24, while at the anchorage in Crete, the ships of Amphibious Squadron Two held an elimination basketball tournament. Four teams entered the tournament, which was held in the well deck of the Rushmore.

In the first round of play the attack cargo ship Uvalde beat the attack transport Chilton, 68-47, and the Rushmore defeated the dock landing ship San Marcos, 52-29. Then in the final game of the tournament, the Rushmore built up a 40-17 lead at the half and coasted to an easy 66-46 victory to capture the tournament.



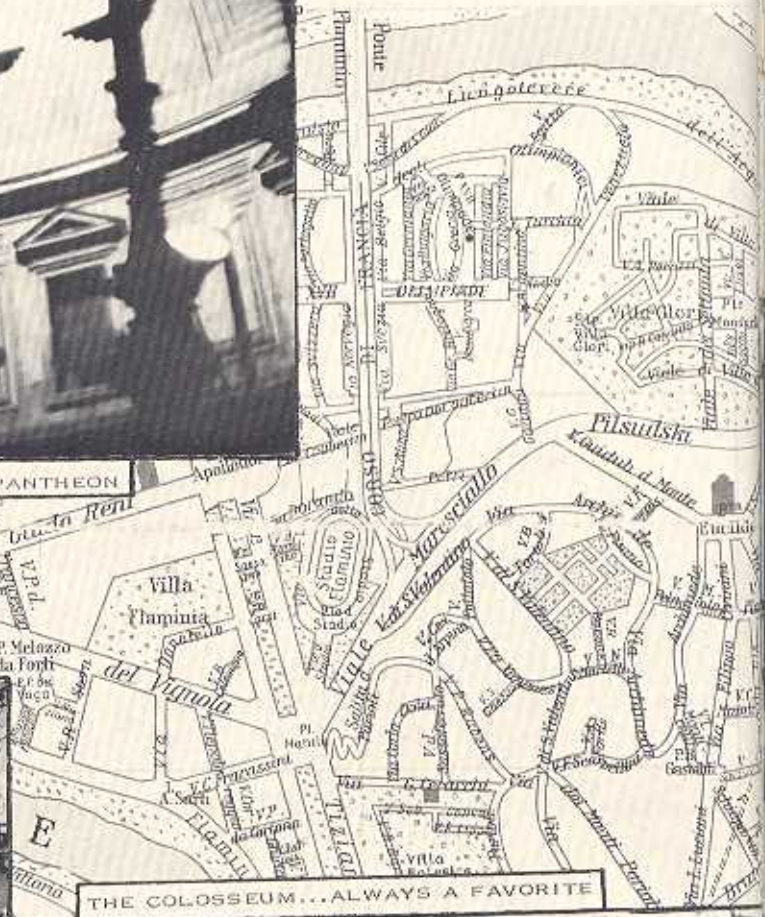
1. POMPEII WAS CLOSE BY
2. THE FAMILIAR JUMPING-OFF PLACE FOR LIBERTY





INSIDE THE PANTHEON

ROME FEATURES BEAUTIFUL GOVERNMENTAL BUILDINGS



THE COLOSSEUM... ALWAYS A FAVORITE

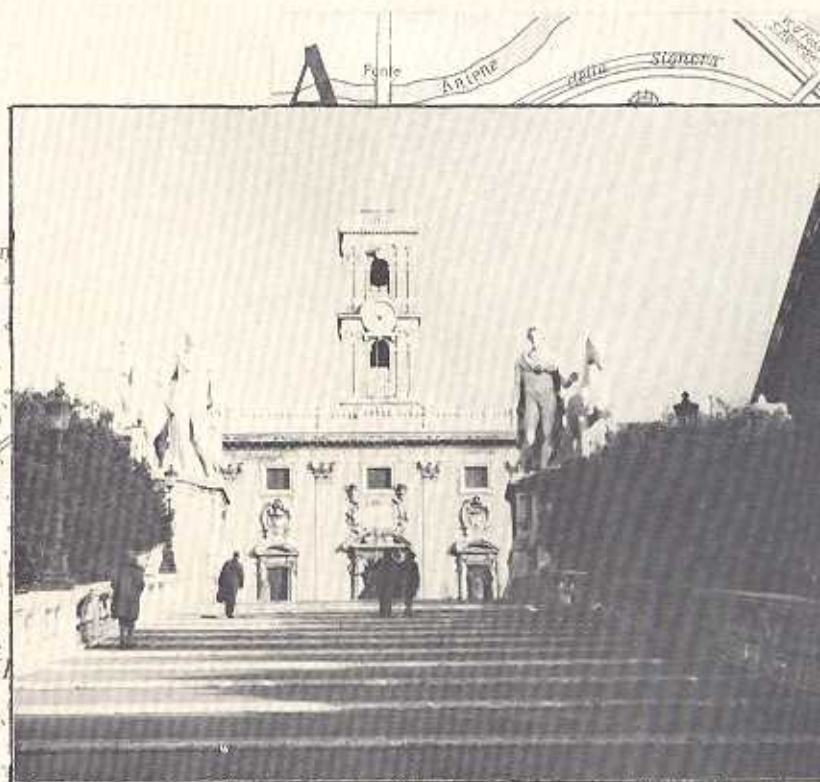


ROME

SO MANY RUSHMORE PEOPLE TRAVELED
UP TO ROME THAT IT ALMOST SEEMED
THAT THE SHIP WAS MOORED ON THE
TIBER



SERVICEMEN GATHER TO COMPARE NOTES



AND CLASSIC ORNAMENTAL STEPS

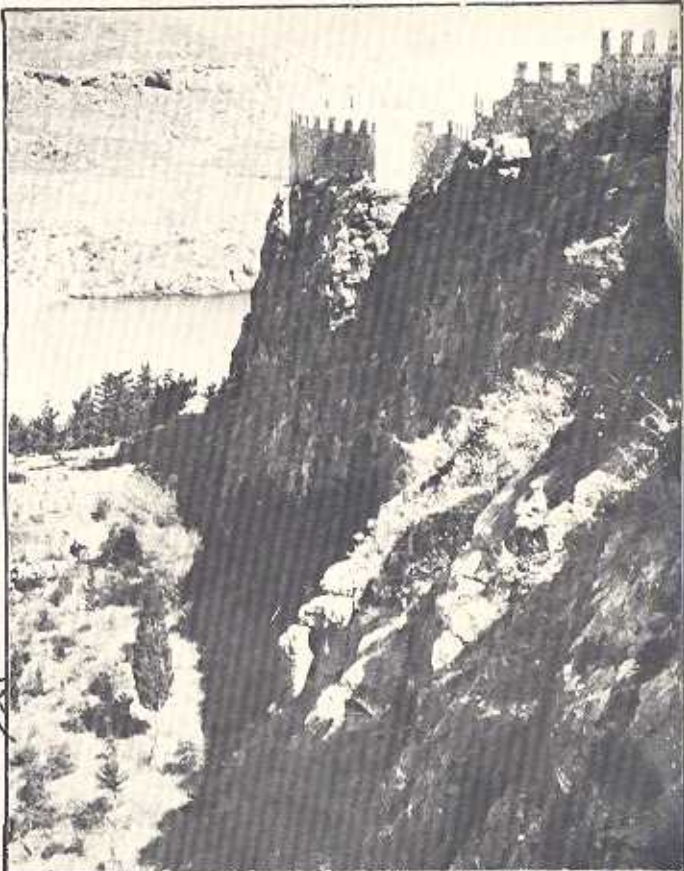


MAGNIFICENT ST PETER'S SQUARE

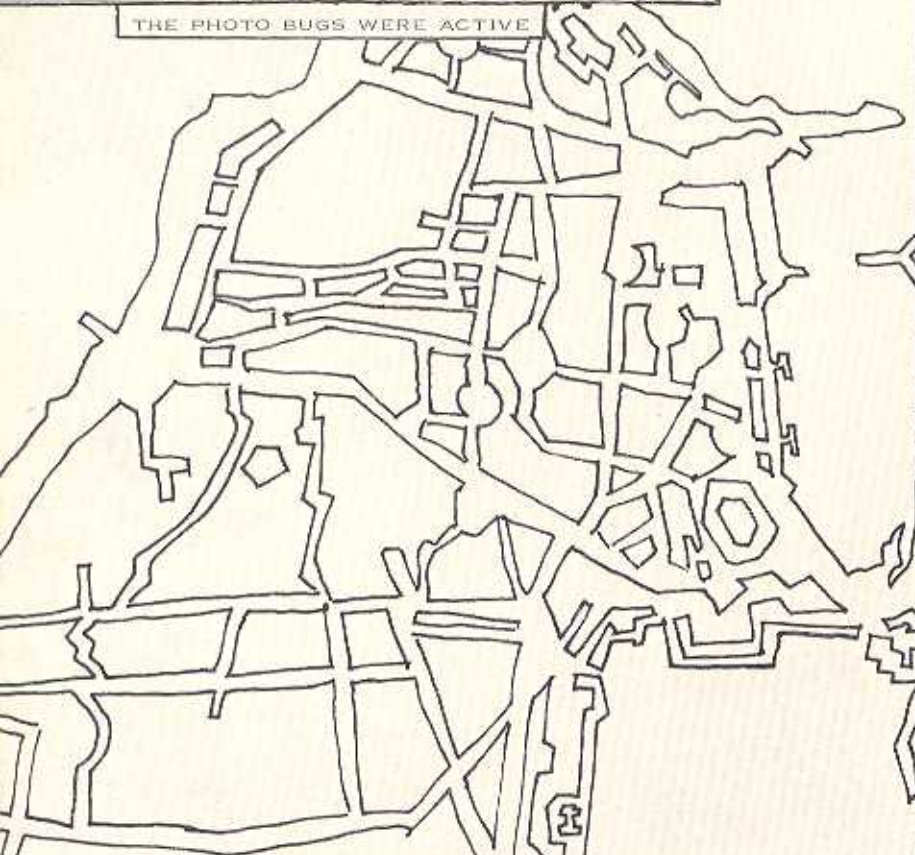




THE PHOTO BUGS WERE ACTIVE



BEAUTIFUL SCENERY WAS CLOSE BY



ENOUGH BEER FOR EVERYONE



RHODES

A PLEASANT CLEAN LITTLE TOWN
WITH GORGEOUS WEATHER



BICYCLERS HAD A HEYDAY



THE USUAL RUINS WERE INSPECTED BY MANY

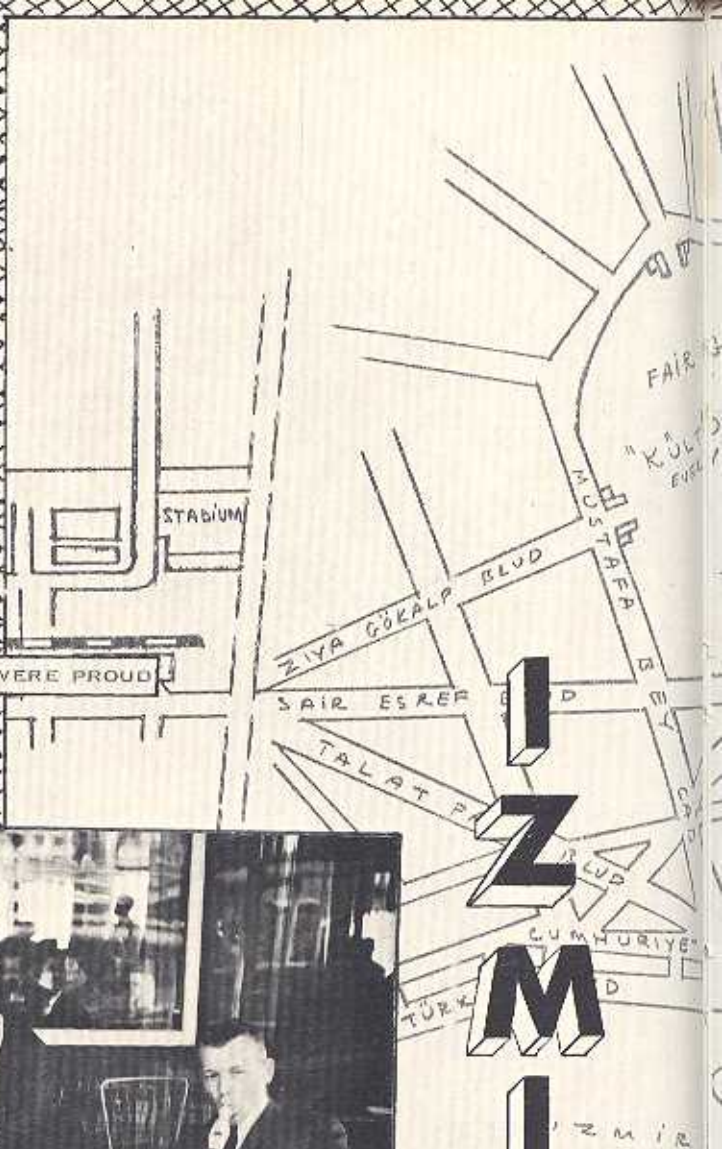


THE OLD CITY OFFERED UNUSUAL ARCHITECTURE

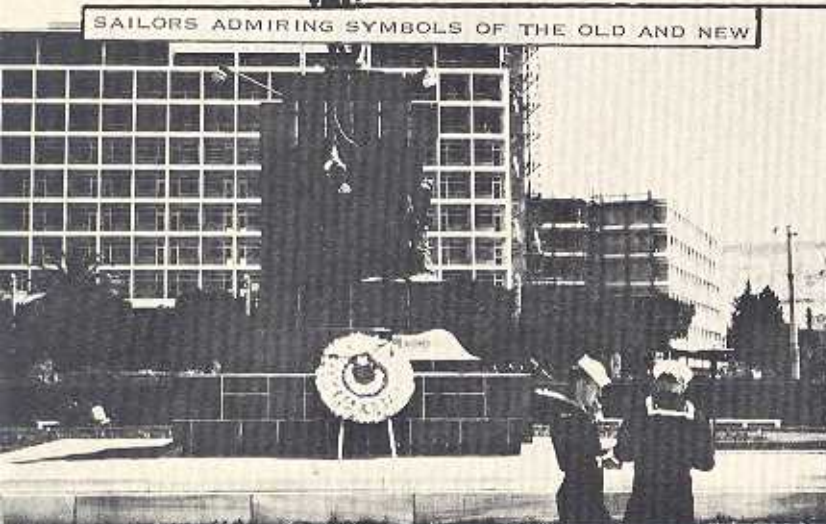




EVEN THE SHOE SHINE BOYS WERE PROUD



SOME PEOPLE TRIED WATER PIPES



SAILORS ADMIRING SYMBOLS OF THE OLD AND NEW



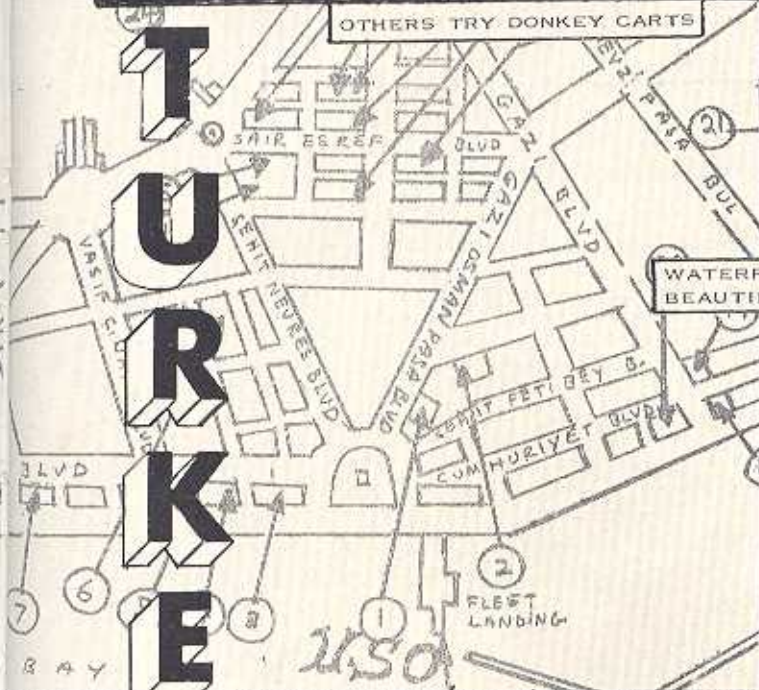
THERE WAS BEER TO DRINK...



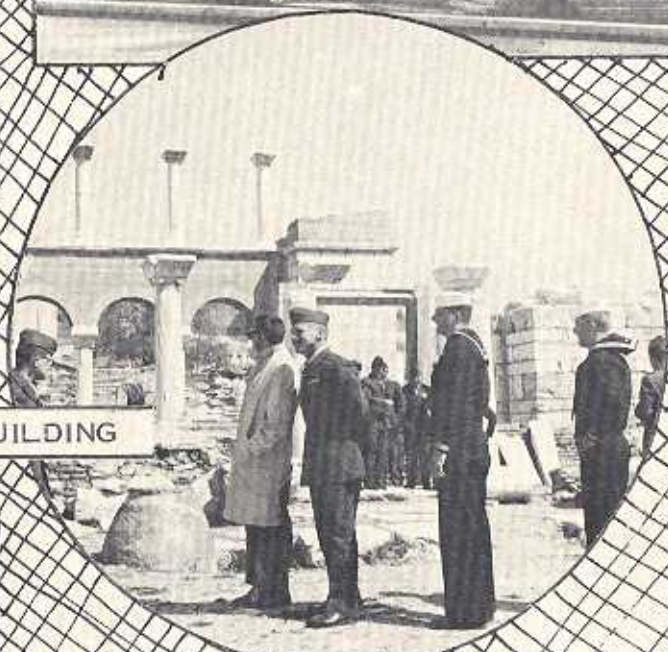
OTHERS TRY DONKEY CARTS



WATERFRONT STREET WITH BEAUTIFUL LITTLE PARKS



AN ANCIENT CITY WITH VAST NEW BUILDING

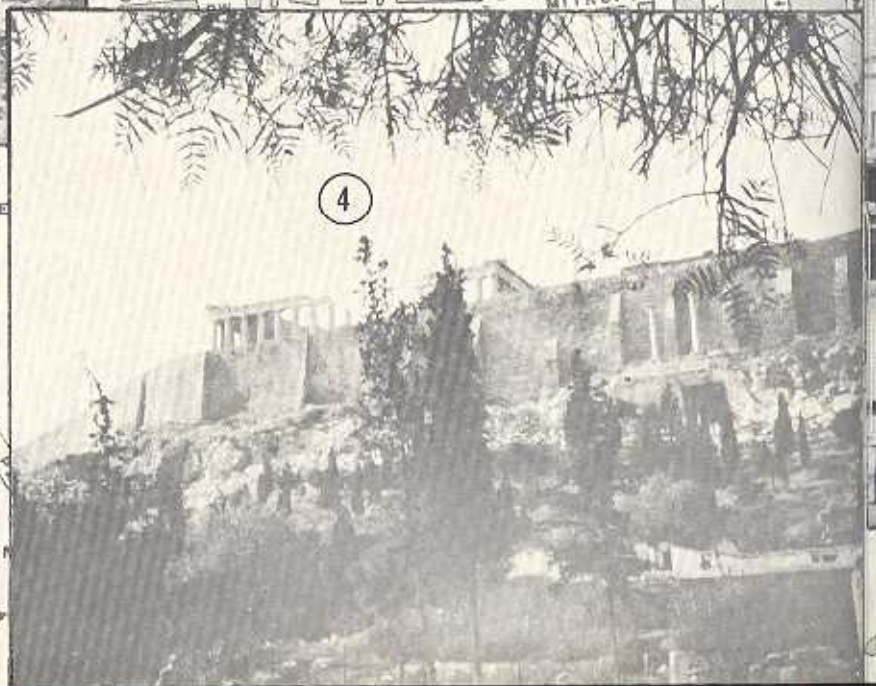
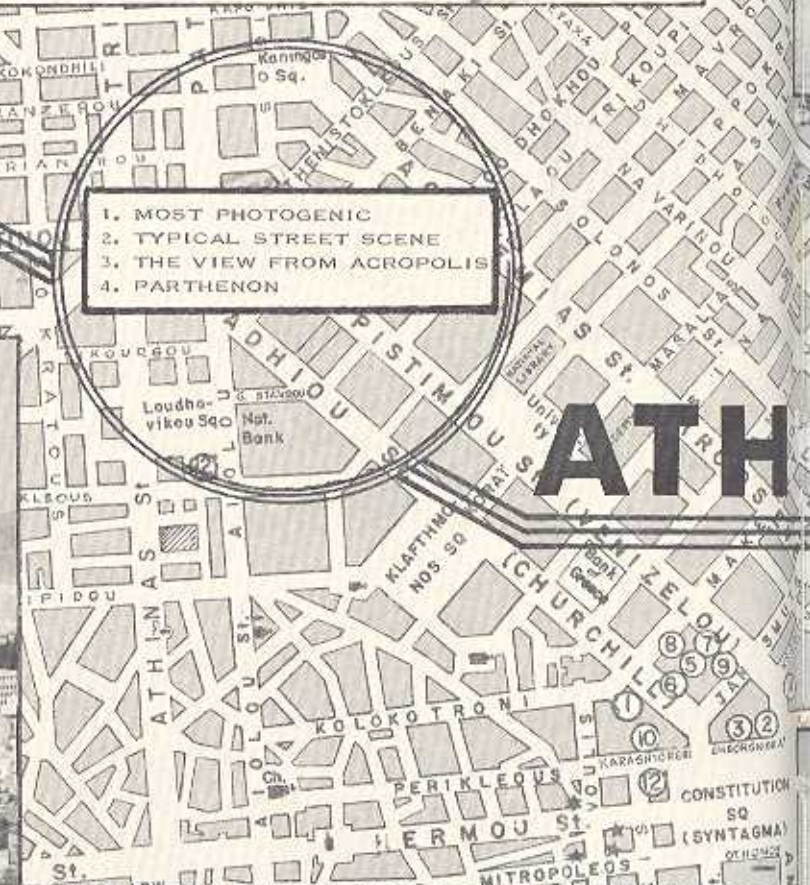


AND OLD RUINS TO VIEW

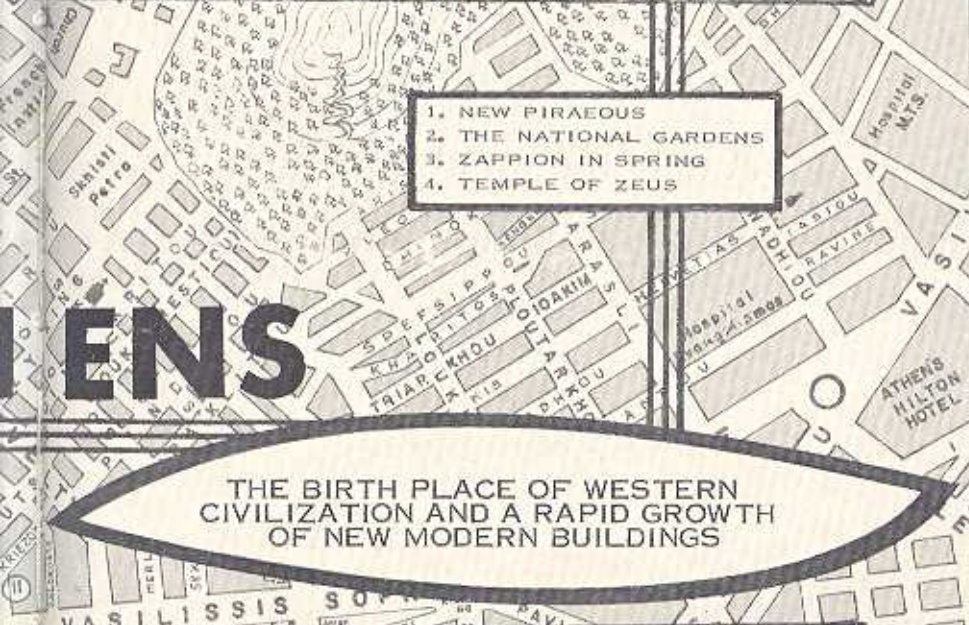


CROWDED ALLEYS WERE COMMON



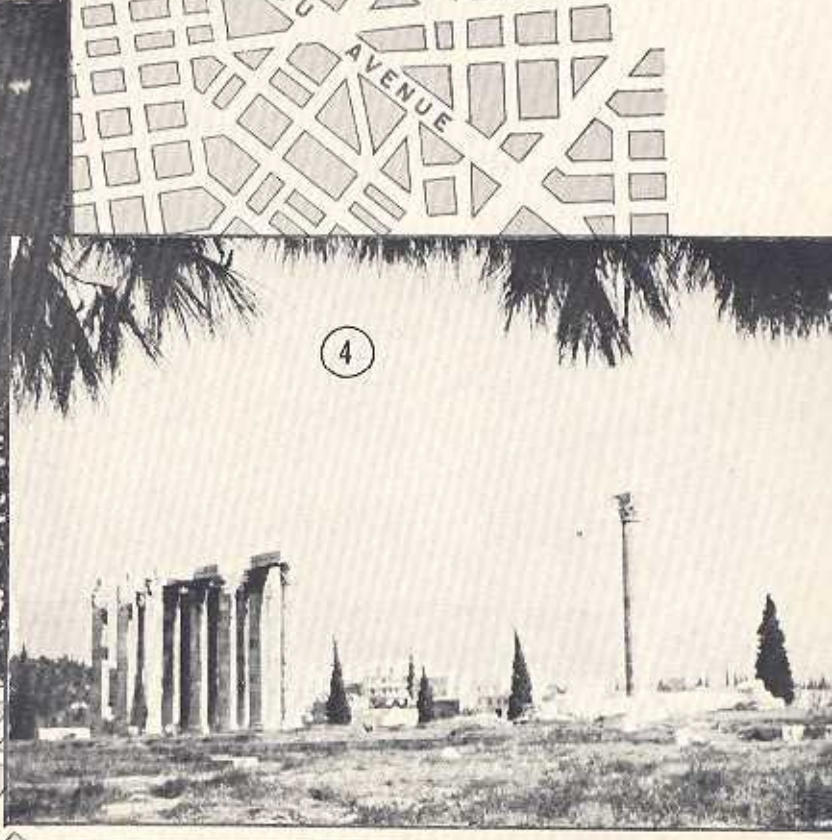
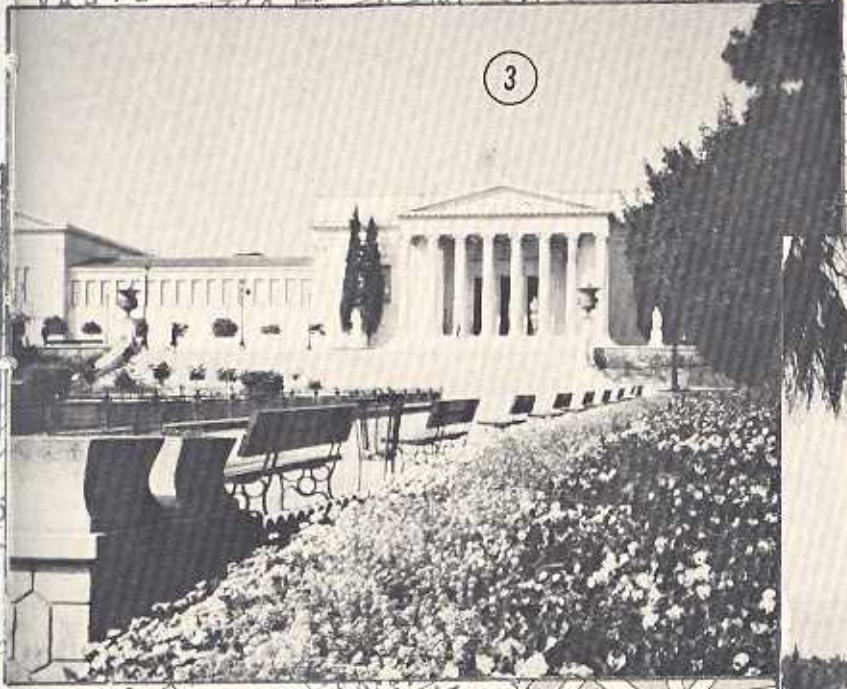


1. MOST PHOTOGENIC
2. TYPICAL STREET SCENE
3. THE VIEW FROM ACROPOLIS
4. PARTHENON



ATHENS

THE BIRTH PLACE OF WESTERN CIVILIZATION AND A RAPID GROWTH OF NEW MODERN BUILDINGS





THE PURPOSE OF BINOCULARS



CANNES

SHOPS FOR EVERYONE



THE BEACH WAS POPULAR

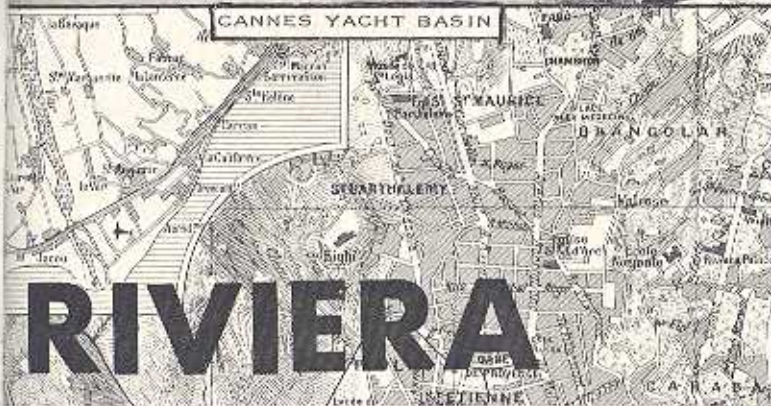




CANNES YACHT BASIN



FRENCH CUISINE IS FAMOUS



RIVIERA

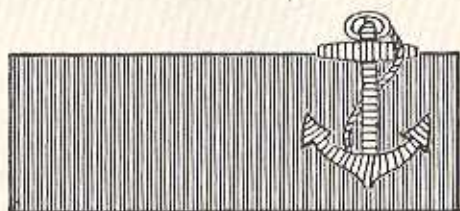
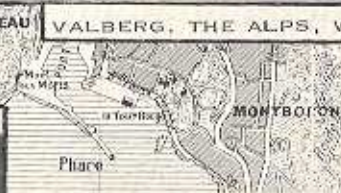
HOME OF THE SMART INTERNATIONAL SET AND ONE OR TWO FAIR LOOKING WOMEN



FOR OBVIOUS REASONS



CHATEAU VALBERG, THE ALPS, WAS A TOUR SPOT





THE LOVELY RAMBLAS



PLAZA DE CATALUNA



MAYFLOWER REPLICA WAS AT FLEET LANDING

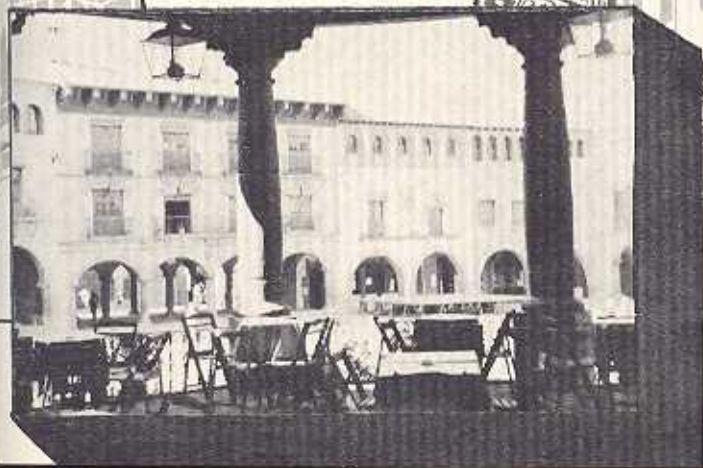
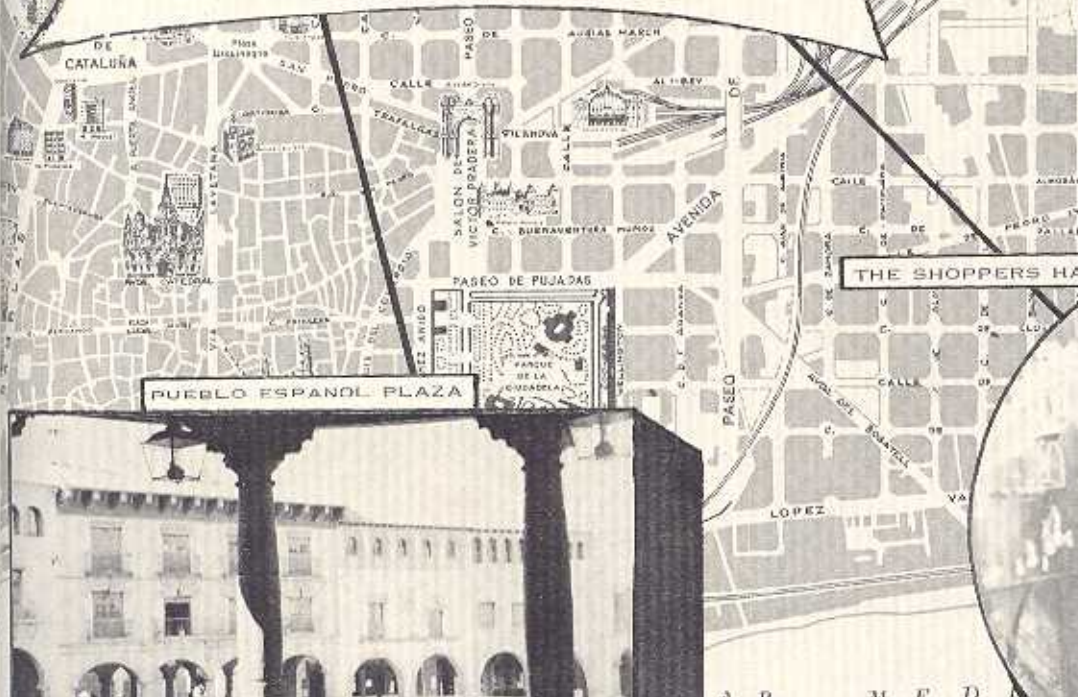


HIGH SOCIETY GIRLS WERE EASY TO MEET

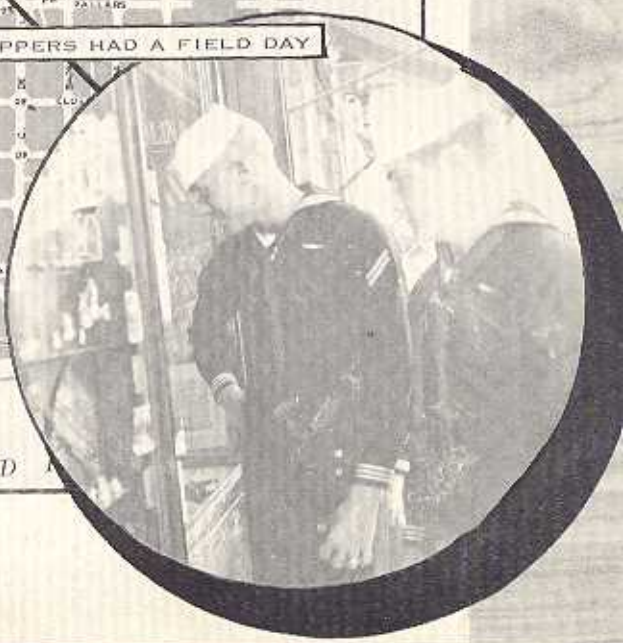


TYPICAL SPANISH BUILDINGS

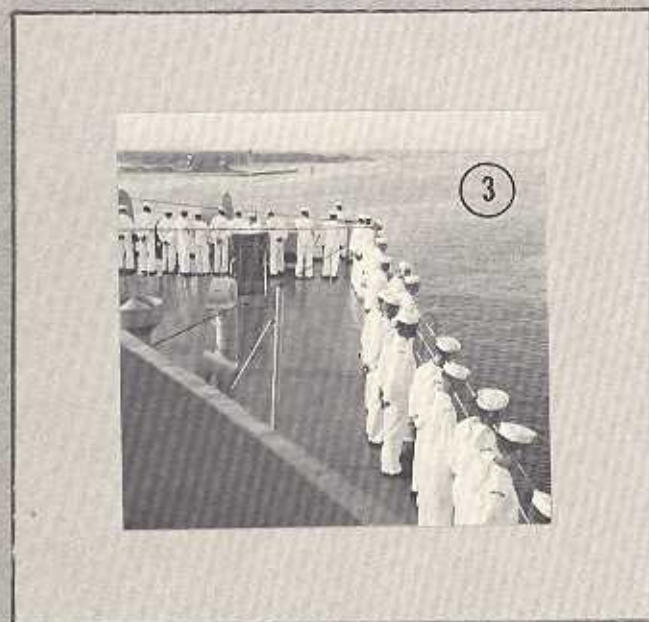
A CITY OF FINE BARGAINS, INTERESTING
TOURIST SPOTS AND A GOOD COMBINATION
OF THE OLD AND NEW



PUEBLO ESPANOL PLAZA



THE SHOPPERS HAD A FIELD DAY



LITTLE VIRG

1. CAPTAIN ADY BROUGHT HER IN
2. DADDY!!!
3. AS THE CREW STOOD AT QUARTERS
4. THE WOMEN CHARGED ABOARD!
5. WELCOME WAS SWEET



THE GATOR

AMPHIBIOUS FORCE, U. S. ATLANTIC FLEET

VOLUME XXI, NO. 23

LITTLE CREEK, VIRGINIA

JUNE 7, 1963

CREEK, INIA

THE SWEETEST PORT WAS THE LAST!



RETURNS HOME-- Captain John J. Becker, Commander Amphibious Squadron 12, shakes hands with Capt. T. F. Howe, Commander Amphibious Squadron Two, after relieving him as Commander Task Force 61 May 22.

PhibRon Two Returns From Med. Cruise

Amphibious Squadron TWO, under the command of Capt. Thomas F. Howe, returned to Norfolk Wednesday from the Mediterranean. Since last February the squadron has operated as the Sixth Fleet's Amphibious Striking Force.

The dock landing ship *Rushmore* was the first of the seven ships to arrive in Norfolk after being relieved in the Mediterranean by PhibRon 12, May 22.

The Squadron also brought back detachments from Tactical Air Control Squadron 22, Assault Craft Unit Two, Underwater Demolition Unit Two, Beachmaster Unit Two, and a minesweeping unit.

Stopping at Morehead City, N. C., approximately 2,000 Marines and a detachment from Marine Helicopter Squadron 262 disembarked from the ships. Lieutenant Colonel N. R. Stanford, Commanding Officer, Second Battalion, Eighth Marine Regiment, directed the Marine landing forces during the deployment.



ARMY & NAVY
PUBLISHING COMPANY, INC.

(A Private Business Enterprise)
2736 Florida, Baton Rouge, La.