



# R/V Cape Flattery



### Specially Equipped & Rigged to Perform:

- MARINE CONSTRUCTION
- DIVING AND ROV OPERATIONS
- SURVEYS - BATHYMETRY & SIDE SCAN SONAR
- OFFSHORE SUPPLY VESSEL
- OIL SPILL RESPONSE
- SALVAGE OPERATIONS

This versatile workboat has a four-point mooring system, large open deck space on two levels, and a 45-ton crane. With 5000' of line to each anchor, the Cape Flattery covers a large area from the same anchor set in 30' to 2400' of water. The comfortable berths, full galley with cooking and laundering facilities allow the vessel to accommodate 40 people for 30 days at sea.

### R/V CAPE FLATTERY:

Official Number:	1111595	Call Sign:	WDA7384
Class:	ABS A1E AMS	Built By:	McDermott, Inc.
Home Port:	Seattle, WA	Date Built:	1990
ABS Classification:	Annual Load Line	Hull Construction:	Steel
USCG Certificate of Inspection:	2005		

### DIMENSIONS:

Gross Tonnage:	496	Net Tonnage:	1011 ITC
Length Overall:	186'	Deck Cargo:	140 Tons
Draft Light:	10'-6"	Beam:	40'
Molded Depth:	10 Avg.	Draft Loaded:	12'
Enclosed Work Rooms:	(1) 16' X 17'	Clear Deck Space:	46' x 40' (main deck)
	(1) 12.6' X 30'	Clear Deck Space:	32' x 20' (upper deck)

### MACHINERY:

Main Propulsion:	(1) Cummins KTA 50, 1500 H.P.
Reduction Gear:	Reintjes WAV 870, 7:1
Z-Drives:	(2) Ulstien, 300 HP
Steering:	Joystick Control
Bow Thruster:	Omni-Thruster, 400 HP
Generators:	(3) 650 kW
Generator Engines:	(3) Cummins 1728
Auxiliary Power Unit:	(1) Cummins NT855
Propeller:	90 x 74, 4 blade, nickel-bronze

## DECK EQUIPMENT:

Cranes:

(1) Hydraulic, 11 Ton @ 34' Radius 72' Max Reach

(1) Knuckle Boom, 2 Ton 25' Radius 40' Max Reach

Anchor Winch: 10 Ton

Mooring Winches: (4) Traction, Fritz Culver, 10 Ton

Capstan: 25/50 Ton



## ACCOMMODATIONS:

Berthing Capacity:

11 Crew and 28 Passengers (expandable to 48)

Galley:

Fully Equipped w/Walk-In

Refrigerator and Freezer

## CAPACITIES:

Ballast Capacity:

302,000 Gal.(can be converted to potable water)

Potable Water Capacity:

15,000 Gal.

Fuel Capacity:

68,000 Gal.

Water maker

5,000 GPD (can be increased to 10,000 gpd)

## COMMUNICATION / NAVIGATION:

Radars:

(2) Furuno

GPS:

(1) Furuno, (1) Trimble

Gyrocompass:

Sperry

Radio – VHF:

(3) Motorola

Radio SSB:

(1) Stephens, (1) ICOM

Fathometer:

(2) Furuno

Autopilot:

Sperry and Robinson

Loud Hailer:

IMC

Weather Fax:

Furuno

GMDSS

Furuno

## PERFORMANCE ESTIMATE:

Max Speed:

11 Knots

Fuel Consumption:

1500 Gal/Day

At 11 Knots

Range:

4,000 miles

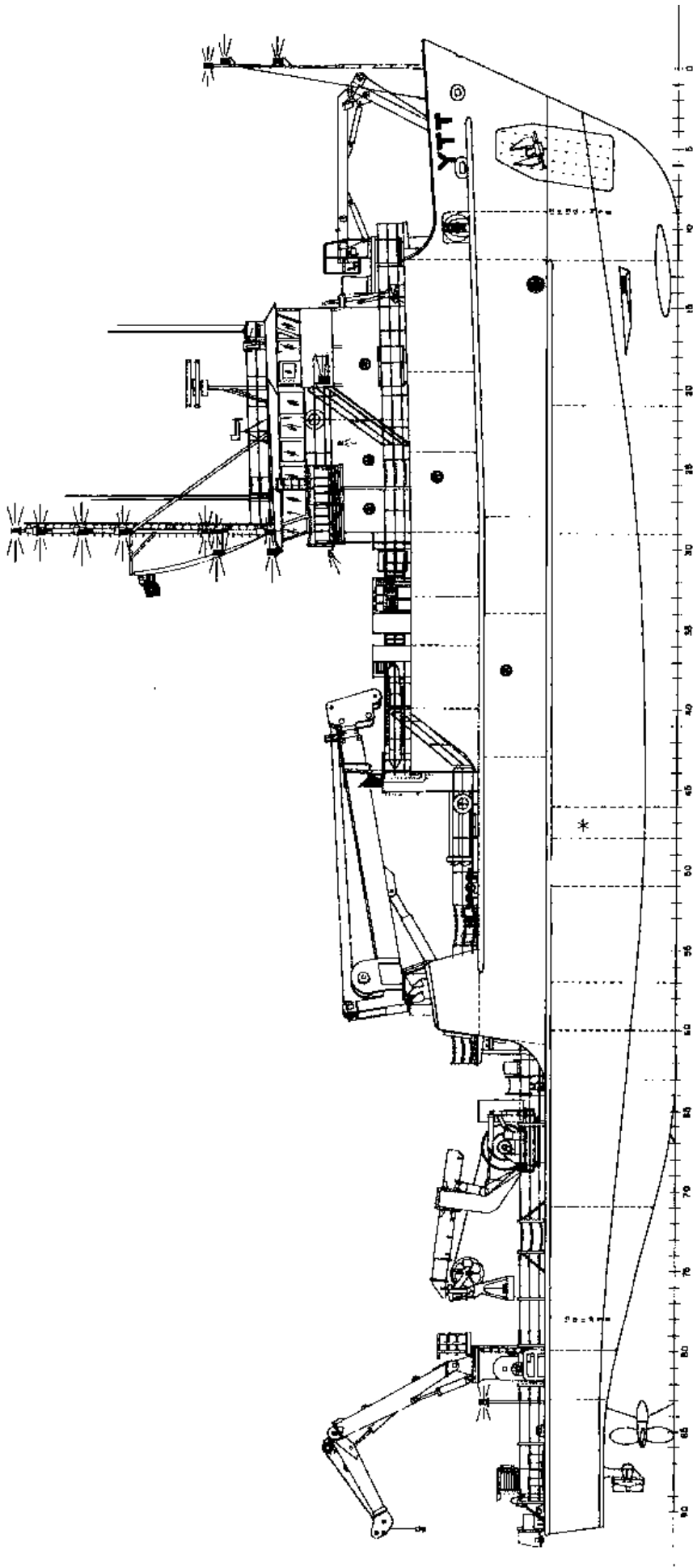
Endurance:

30 days

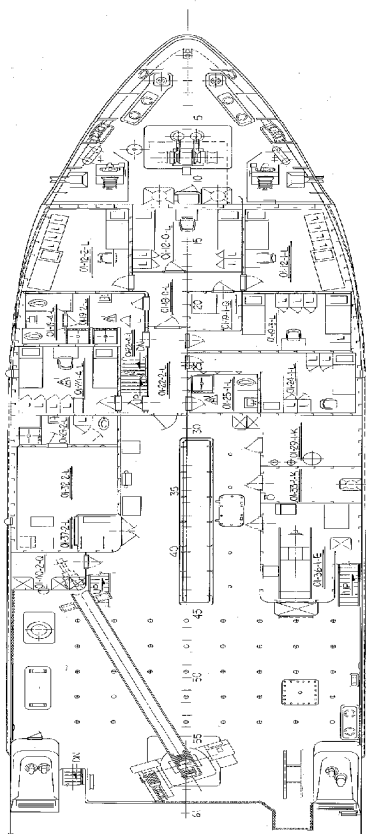
## RESCUE / SERVICE BOAT

6 M RIB

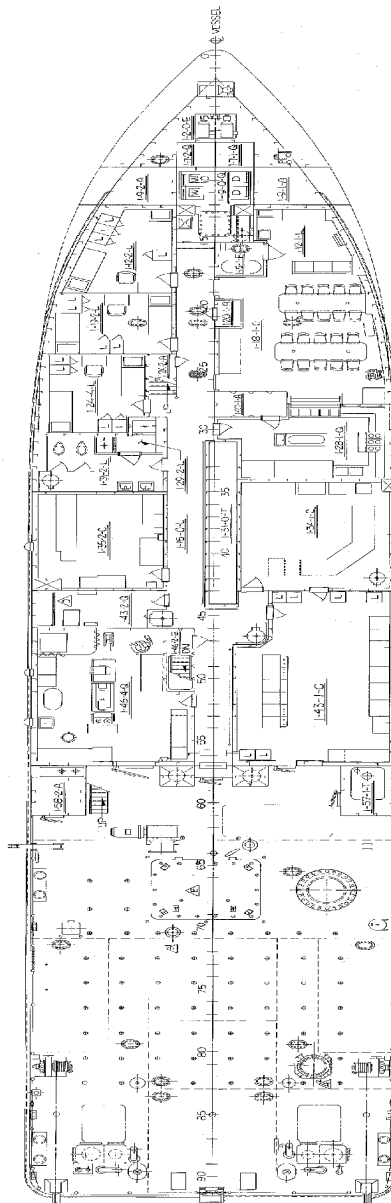
22' Glacier Bay Work Skiff



OUTBOARD PROFILE



FORECASTLE DECK  
SCALE: 1/4" = 1'-0"



MAIN DECK  
SCALE: 1/4" = 1'-0"

Full Range of Diving Equipment, Remotely Operated Vehicles and Salvage Equipment Available to Meet Any Requirements.



TDX Corporation  
 PO Box 88  
 St. Paul Island, AK 99660  
 Ph: (907) 546-2312 Fax (907) 546-2366  
[www.capeflattery.com](http://www.capeflattery.com)



Bering Sea Eccotech, Inc.  
 615 E 82<sup>nd</sup> Ave, Suite 200  
 Anchorage, AK 99518  
 Ph: (907) 278-2312 Fax: (907) 278-2316  
[www.beringsea.com](http://www.beringsea.com)