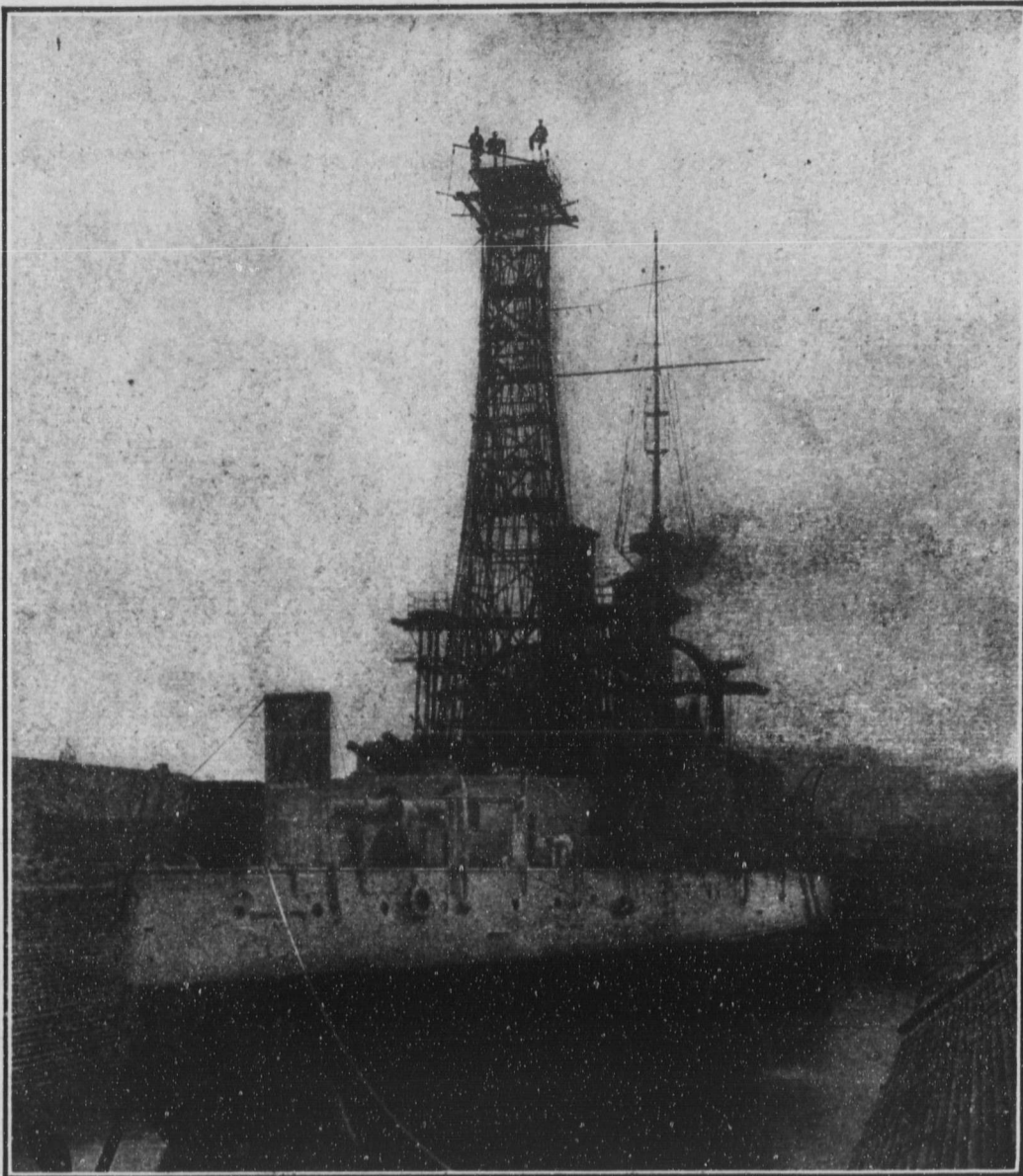


In the World of Mechanics and Building



A GIGANTIC SKELETON MAST FOR THE U. S. S. MASSACHUSETTS.
The first skeleton mast to be built in the New York Navy Yard is now practically completed for the Massachusetts. It is 103 feet high, and constructed of tubular steel. The new mast is to be applied to many of the battleships.



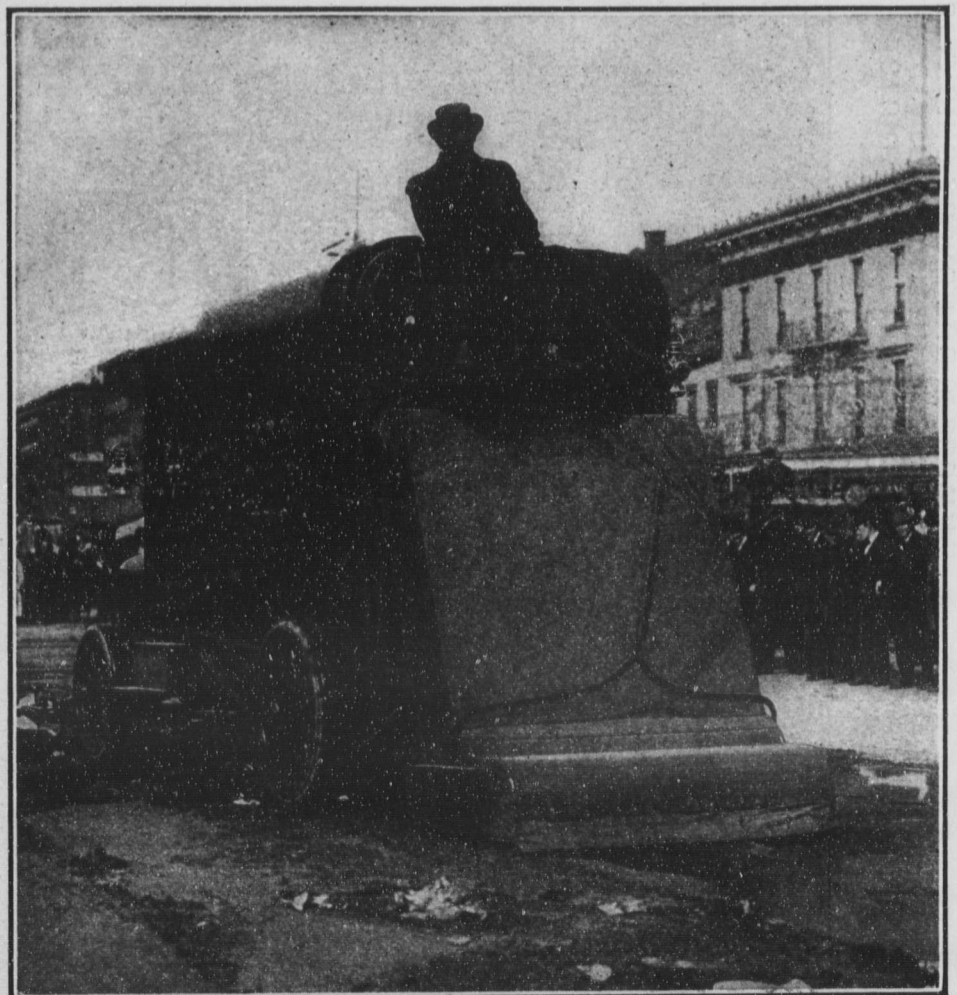
NEW FAD FOR AUTOISTS.
A novel Automobile Sleigh, invented by Lieut. Jean de Basse, of the French Army, and which has attained a speed of twenty miles an hour over ordinary good roads.



AIR SHIP PRINCIPLE FOR A SLEIGH.
M. Nivert, a motor enthusiast, showed at Chamounix recently a "bob-sled," with a propeller driven by a gas engine.



AN ENORMOUS STEAM SIREN.
A safeguard for ships, located on a lighthouse, and the sound of which carries twenty miles.



NEW YORK'S FIRST AUTO STREET SWEEPER.
A new device just adopted which mechanically gathers up the dirt and rubbish, and loads it into a van without handling.