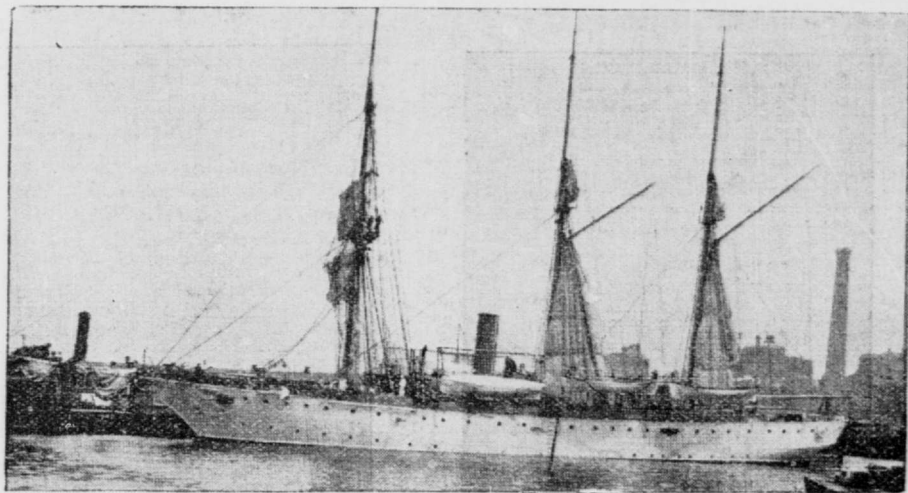
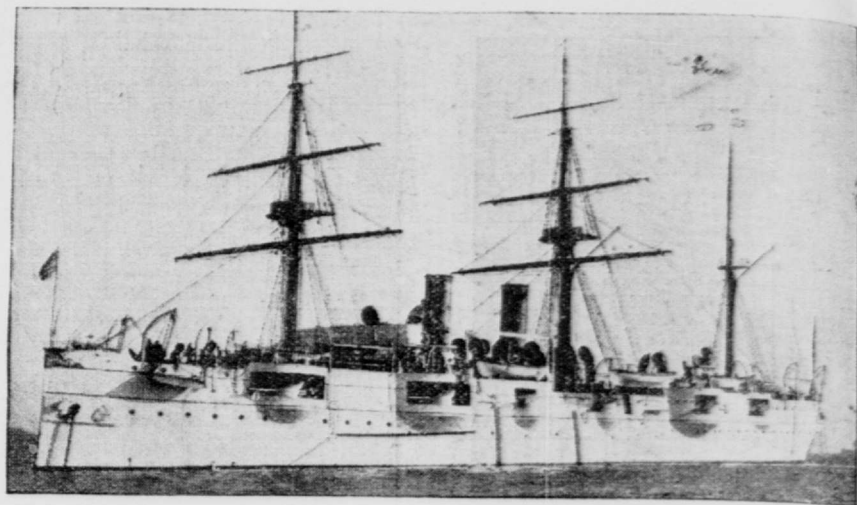


MEN AND SHIPS FOR SERVICE IN THE CHINA SEA.



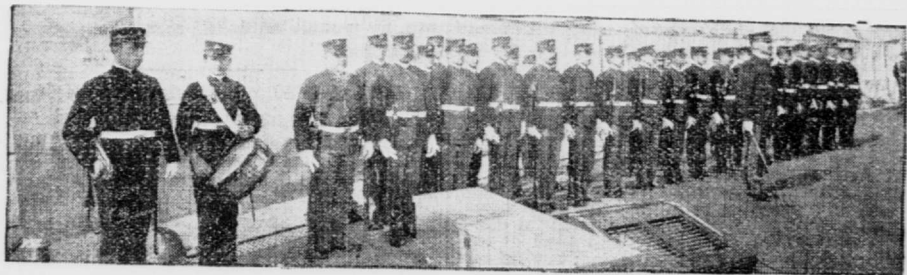
THE COMPOSITE GUNBOAT PRINCETON.
Ordered to Taku.



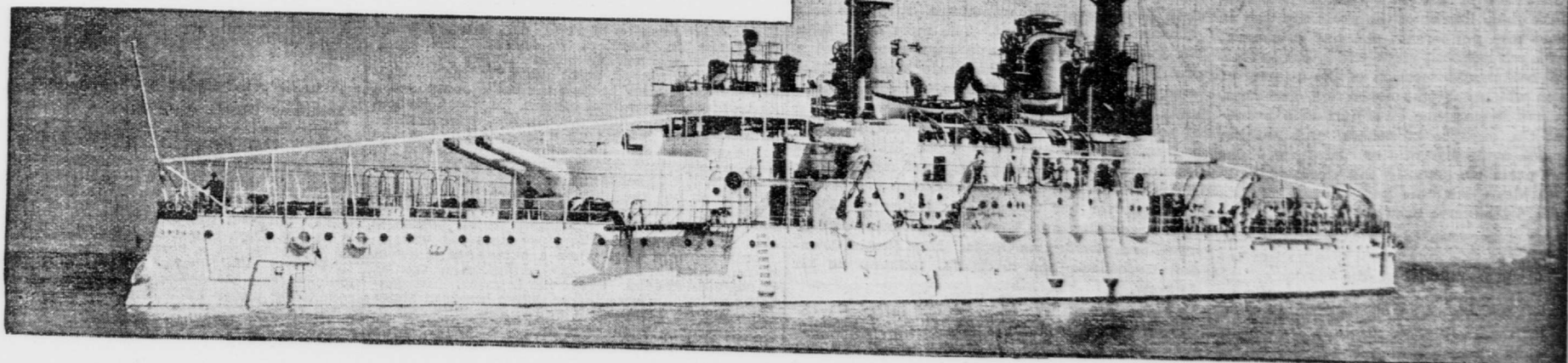
THE CRUISER NEWARK.
Rear-Admiral Kempff's flagship.



MEN OF THE GUNBOAT HELENA.
On the Asiatic Station and available for Chinese service.



A DETACHMENT OF UNITED STATES MARINES



THE BATTLESHIP OREGON, ORDERED TO TAKU.