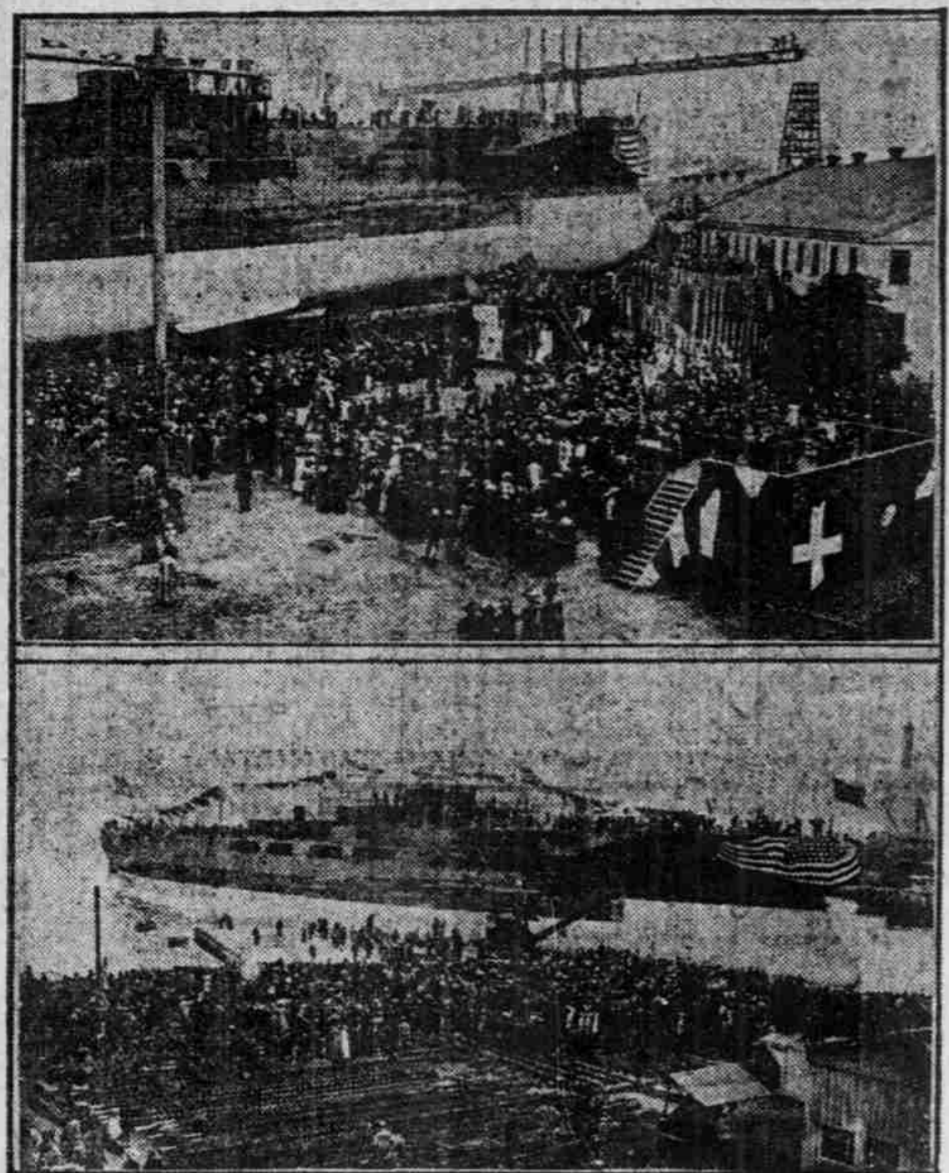


Scene at Launching of Dreadnought Florida



Photographs by American Press Association.

**T**HE battleship Florida, the largest of American warships and the latest thing in super-Dreadnoughts, which was successfully launched at the Brooklyn navy yard on May 12 and christened by Miss Elizabeth Legere Fleming, daughter of a former governor of Florida, has a normal displacement of 21,825 tons, and her turbine engines are expected to give her 28,000 horsepower, which should give her a speed of about 22 knots an hour, although the specifications call for 20.78 knots. Her armament will be as heavy as any known vessel of her class, and her broadside fire will be 20 per cent greater than any vessel now in commission.

There will be many improvements in this battleship, of which few of the large sea fighters can boast. She will be fitted with automatic electric elevators, for instance, and all furniture will be metal. The elevator cars will be installed in the fire room ventilator trunks. Each elevator will be operated from the cars by means of push buttons and will be utilized by officers who would otherwise have a great deal of climbing to do. The ship is 320 feet long and 50 feet beam. She will cost something like \$6,000,000 when completed.

The main battery of the ship will consist of ten twelve-inch rifles arranged in pairs in turrets. Looking at her bow one would think that the Florida had what is called superposed or double decked turrets, like the Kearsarge and Kentucky; but, as a matter of fact, there are only two guns in each of the five turrets, and the second turret in the fore part of the ship is necessarily elevated on the superstructure so as to be able to fire freely over the top of the forward turret. There is a formidable secondary battery, composed of sixteen five-inch rapid firers, four three-pounders, two one-pounders and a number of machine guns. There are also two twenty-one-inch submerged tubes for torpedoes.

The battleship Iowa, one of the most powerful vessels under the American flag during the Spanish-American war, is not in the same class with the Florida, which is approximately 10,000 tons heavier and 100 feet longer than Admiral Evans' old fighter. Besides, the Florida's engines are two and a half times more powerful than the Iowa's, her speed three knots greater. She carries almost a thousand tons more coal. At a distance of four and a half or five miles the Florida could hurl a broadside of steel missiles weighing 8,500 pounds. At this distance the Iowa could reply with a broadside weighing but 3,500 pounds. The Florida will carry a crew of 1,002 men; the Iowa's crew was about 600.

When the Florida is completed she will wear along her sides amidships near the water line a belt of eleven inch armor eight feet or more in width. Above this will be another belt of the same width nine inches thick. A shell in order to penetrate a turret in its most exposed part will be obliged to pass through twelve inches of as hard steel as was ever manufactured.

It is believed that the armor plan for the Florida is the most comprehensive which has been devised for any ship. The hull is divided into small compartments. This, it is believed, will decrease the vulnerability in case of the explosion of a torpedo or mine against the side of the vessel. A powerful battery of pumps will assist in keeping the ship afloat in such an emergency.

The turrets or revolving citadels are placed over the keel in a straight line, two forward of the stacks and three abaft. It is possible to deliver four shots simultaneously over the bow and over the stern. The sixteen five-inch rapid fire guns, eight on either side, are placed in steel compartments of their own.

This array of offensive weapons will be directed from platforms on the tops of the two 120 foot lattice masts. On these elevated stages, where they can see the enemy at a distance, the officers by means of their range apparatus can determine with mathematical accuracy the distance of the enemy and his speed.

A MODEL OF NEW YORK.

Pennsylvania Railroad's Remarkable Exhibit For a Berlin Exhibition.

One of the features of the great town building exhibition to be held in Berlin, Germany, in the coming summer will be a thirty-three foot long model of Greater New York, which will be shown by the Pennsylvania Railroad company. It will include an underground cross section showing the Pennsylvania's new terminal and tunnel schemes as well as the intricate system of lines with which subterranean Gotham is now interlaced.

In one of the miniature tunnels, which is to be an exact reproduction of the original in all details except size, a train of cars consisting of three Pullmans pulled by an electric locomotive will make trips.

The Pennsylvania company announces that its new terminal plant, which will be shown in miniature, represents a cost of \$90,000,000.

Farmer's Plan to Dodge the Comet.

John Marlow, a farmer near Council Bluffs, Ia., is so convinced that Halley's comet will spread death and destruction on the earth that he has dug a cave in which he and his family will take refuge at the time the comet is passing through the tail of the comet. The feature of the cave is an air tight door, by which he expects to keep out the poisonous atmosphere. In addition to himself and his family he will take two horses, two cows, a dog, a cat and a number of chickens into the cave.

TESTS OF LOW TEMPERATURE

Princeton's New Laboratory Gives First Scientific Results.

There have recently been installed in Palmer physical laboratory, Princeton university's new \$500,000 structure, practically the only successful constant low temperature rooms in the world. They have already aided in obtaining results of great importance to physics and chemistry, and scientists generally predict that the new rooms will be of incalculable value in determining the truth of several theories which have not heretofore been sufficiently tested because of lack of proper facilities.

The temperature of the rooms can be kept at 7 degrees below zero F., with a variation of not more than one-tenth of a degree, which has never before been achieved. They are also kept entirely dry, and in damp weather no air is admitted except such as may be freed from all moisture and vapor by a special process used for this purpose. The walls are protected from outside influence by a six inch layer of cork.

The rooms are cooled by means of the ordinary ammonia process, and, while one room can be lowered from 32 degrees F., the freezing point, to a few degrees above zero and kept there, the other rooms can be lowered to 7 degrees below zero and maintained at that point.

Drinking Cups For Chicago Dogs.

To reduce the danger of rabies 1,000 drinking cups for dogs have been placed in different parts of Chicago.

# Two Estate Gas Ranges to Be Given Away

Special arrangements have been made by this company to get Mr. Charles E. Draper, probably the greatest and best posted man in this country on gas ranges, to come to this city and give a series of free demonstrations on how to use a gas range.

He will explain how to cook on a gas range, how not to cook on a gas range. He will explain and demonstrate how very economical gas ranges are, how to get the most with the smallest amount of gas.

## Free Demonstrations May 18, 19, 20, 21, Wednesday, Thursday, Friday, Saturday, From 3 to 5 p. m.

Everyone in Rock Island and Moline is invited to be present. We will give a coupon ticket to everyone (not children) who will come to these free demonstrations. These coupon tickets are numbered and the following articles will be given away:

**FREE 2 Estate Gas Ranges.** Wednesday we will give away Five Waffle Irons  
**FREE 10 Gas Range Waffle Irons.** Friday we will give away Five Waffle Irons.  
 Saturday we will give away an \$18 Estate Gas Range

You must be present with your ticket when these are given away and you must live on a line, or on a proposed extension of the Peoples Power company's mains, and the gas range must be installed within 30 days after our gas connections are made.

Personal instruction will be given anyone between the hours of 9 and 12 a. m. Refreshments will be served and the women are urged to bring the "men folks" along. All demonstrations free.

In the Old M. & K. Store Room on Second Avenue.  
**PEOPLES POWER CO.**

**GROCERS TO HOLD PICNIC NEXT MONTH**

Members of Association Agree to Close Their Stores on Decoration Day.

The monthly business meeting of the Rock Island Retail Grocers' association was held last night at Math's hall. A committee of three was appointed to arrange for the annual picnic of the association next month. A motion to close the stores Decoration day was carried.

The new credit system, which was adopted by the grocers at their annual meeting, is gaining favor among the members and they are pleased with the results obtained so far under the new system. A customer who does not have a clear bill at every store is not given credit by any other merchant until this record is cleared.

**Today in the Markets**

Chicago, May 17.—Following are quotations on the market today:  
**Wheat.**  
 May, 113, 113, 111, 112 1/2.  
 July, 103 1/2, 103 1/2, 102 3/4, 103 1/2.  
 September, 100 3/4, 101 1/4, 100 3/4, 101 1/4.  
**Corn.**  
 May, 60 1/2, 60 1/2, 60 1/2, 60 1/2.  
 July, 62 1/2, 63 1/2, 62 1/2, 62 3/4.  
 September, 63 1/2, 63 3/4, 63 1/2, 63 1/2.  
**Oats.**  
 May, 42 1/2, 42 1/2, 42 1/2, 42 1/2.  
 July, 40 1/2, 41, 40 1/2, 40 1/2.  
 September, 39 1/2, 39 1/2, 39 1/2, 39 1/2.  
**Pork.**  
 May, 22.85, 22.22, 22.85, 23.22.  
 July, 22.90, 23.27, 22.90, 23.27.  
 September, 22.92, 23.20, 22.87, 23.17.  
**Lard.**  
 May, 13.12, 13.17, 13.12, 13.15.  
 July, 12.80, 12.90, 12.80, 12.87.  
 September, 12.67, 12.77, 12.65, 12.72.  
**Ribs.**  
 May, 13.12, 13.20, 13.10, 13.20.  
 July, 12.65, 12.85, 12.65, 12.82.  
 September, 12.65, 12.70, 12.55, 12.70.

Receipts today—Wheat, 41; corn, 77; oats, 254; hogs, 10,000; cattle, 2,500; sheep, 12,000.  
 Estimated receipts Wednesday—Wheat, 12; corn, 63; oats, 10; hogs, 22,000.  
 Hog market opened steady. Hogs left over, 5,370. Light, \$9.30@9.65; mixed and butchers, \$9.25@9.40; good heavy, \$9.25@9.55; rough heavy, \$9.25@9.40.  
 Cattle market opened steady. Sheep market opened steady. Omaha—Hogs, 5,000; cattle, 4,700. Kansas City—Hogs, 11,000; cattle, 5,000.  
 Hog market closed strong, 5 and 10 cents higher. Bulk sales, \$9.60@9.70; light, \$9.40@9.75; mixed and butchers,

\$9.35@9.75; good heavy, \$9.35@9.75; rough heavy, \$9.35@9.50; pigs, \$9.10@9.60; porkers, \$9.65@9.70.  
 Cattle market closed weak. Sheep market closed weak.  
 Northwestern receipts: Minneapolis—Today, 112; last week, 216; last year, 195. Duluth—Today, 45; last week, 36; last year, 99.  
 Liverpool opening cables—Wheat 7/8 to 1 1/2 lower, corn unchanged. Liverpool closing—Wheat 1 1/2 to 2 d. lower, corn 1/4 higher.

**New York Stocks.**  
 Chicago, May 17.—Following are the quotations on the market today:  
 Gas ..... 108  
 Union Pacific ..... 182 3/4  
 U. S. Steel preferred ..... 118  
 U. S. Steel common ..... 82 3/4  
 Reading ..... 162 3/4  
 Rock Island common ..... 44 1/2  
 Northwestern ..... 152  
 Southern Pacific ..... 126  
 New York Central ..... 120 1/2  
 Missouri Pacific ..... 70 3/4  
 Great Northern ..... 135 1/2  
 Northern Pacific ..... 131 1/2  
 L. & N. .... 147 1/2  
 Smelters ..... 79 1/2

**ROYAL NEIGHBORS ORDER REMODELING**

Contractor C. J. Larkin to Arrange Old Club Home to Suit Needs of Society.

All of the bids submitted by local contractors for the remodeling of the newly acquired quarters of the Royal Neighbors of America at Sixteenth street and Third avenue were rejected yesterday by the board of managers of the society. The specifications of the various bidders were all different, and the board decided to reject the bids and place the work in the hands of Contractor C. J. Larkin. The building will be repainted and repainted, some of the partitions will be torn out and a vault for the records of the society will be built. Just how long it will take for the completion of the work is not known at present, but the Royal Neighbors expect to remove from their present quarters on the sixth floor of the Safety building to their new home July 15.

Canadian Pacific ..... 193 1/2  
 Pennsylvania ..... 135  
 Erie ..... 28 3/4  
 Lead ..... 77 1/2  
 C. & O. .... 81 1/2  
 B. & O. .... 111 1/2  
 Atchafalaya ..... 109 1/2  
 Locomotive ..... 45 1/2  
 Sugar ..... 123  
 St. Paul ..... 138 3/4  
 Copper ..... 70 3/4  
 Republic Steel preferred ..... 97 1/2  
 Republic Steel common ..... 83 1/2  
 Southern Railway ..... 26 1/2

**LOCAL MARKET CONDITIONS.**

Today's Quotations on Provisions, Live Stock, Feed and Fuel.  
 May 17.—Following are the quotations on the local market today:  
 Fresh Eggs—21c.  
 Live Poultry—Hens, per pound, 15c.  
 Butter—Dairy, 25c; creamery, 25c.  
 Potatoes—30c.  
 Lard—15c.  
**Feed and Fuel.**  
 Grain—Corn, 70c; oats, 48c.  
 Forage—Timothy hay, \$15; wild hay, \$14; straw, \$7.  
 Coal—Lump, per bushel, 15c; slack, 8c.  
 Wood—\$4.50 per load.  
 Sales on Market square during the past 24 hours up to noon today were as follows:  
 Corn—Six loads at 70c.  
 Hay—One load at \$15.  
 Straw—One load at \$7.

John D. Rockefeller would go broke if he should spend his entire income trying to prepare a better medicine than Chamberlain's Colic, Cholera and Diarrhoea Remedy for diarrhoea, dysentery or bowel complaints. It is simply impossible, and so says every one that has used it. Sold by all druggists.

**Charles E. Hodgson**  
 (The Best is the Cheapest.)  
 FIRE, LIFE, LIGHTNING AND WIND-STORM INSURANCE  
 Established 1874.  
 Office, 1728 Third avenue. Rates as low as consistent with security.  
 ROCK ISLAND, ILL.

**We Loan Money.**  
 On your plain note; no security, no publicity, salaried people and others, your credit is good here. Call and let us explain our new plan.  
**Peoples Loan Company**  
 409 Lane Building, Davenport, Iowa.  
 Corner Third and Main Streets.  
 Phone 2574.

**Danielson's Swedish Dyes**  
 To Be Used With Gasoline.  
 The quickest and easiest process for dyeing Plumes, Velvets, Flowers, Lace, Silks, Vellings, Woolen, Cotton, Horse Hair or Straw Goods; also Gloves, Shoes and Hosiery without taking the curl from plumes or injury to the most delicate fabric. For sale by Thomas Drug Company.

**CONTRACTORS AND BUILDERS.**  
**John Volk & Co.,**  
 CONTRACTORS AND BUILDERS.  
 Manufacturers of Sash, Doors, Blinds, and Stairs. Interior Finish of all kinds.  
 Hardwood Veneer Flooring, and dealers in Glass, 311 and 323 Eighteenth street.

**STOCK BROKERS.**  
 H. J. TOHER. A. L. ANDERSON.  
**H. J. TOHER & CO.,**  
 Brokers.  
 STOCKS, GRAIN, PROVISIONS, COTTON.  
 Private wires to New York and Chicago, 103 Main street, Davenport. Phone west 497.

H. E. Casteel, Pres. M. S. Heagy, V. P. H. B. Simmon, Cash.

## YOU CANT BUY A THING WITH THE MONEY YOU HAVE SPENT

**PUT IT IN THE BANK**

Bank ONE DOLLAR A DAY—\$6 a week—for only one year, and leave it stay for 30 years. At 3 per cent compound interest this will amount to \$758.16; at 4 per cent compound interest this will amount to \$1,010.88—a snug sum for old age.

Make OUR Bank YOUR Bank.

We pay liberal interest consistent with safety 4 per cent.

### Central Trust & Savings Bank

## Weak Lungs

Seventy years of experience with Ayer's Cherry Pectoral have given us great confidence in it. We strongly recommend it for coughs, colds, bronchitis, weak throats, and weak lungs. It prevents, it soothes, it heals. Just the help nature needs.

Ask your doctor to name the best family medicine for coughs, colds, bronchitis, weak lungs. Follow his advice.

J. C. Ayer & Co., Lowell, Mass.

## R&G CORSETS

\$1.00 to \$5.00