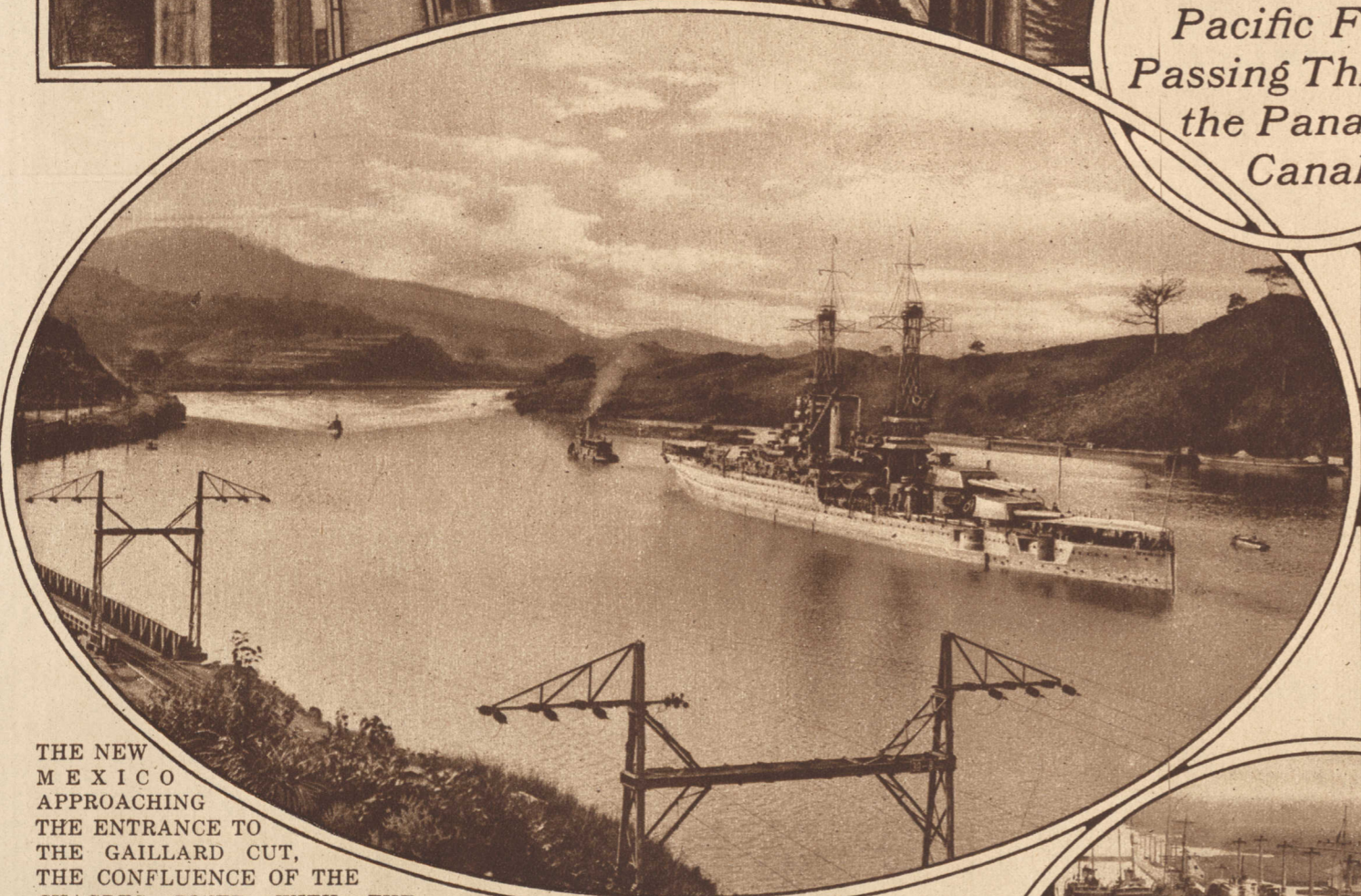


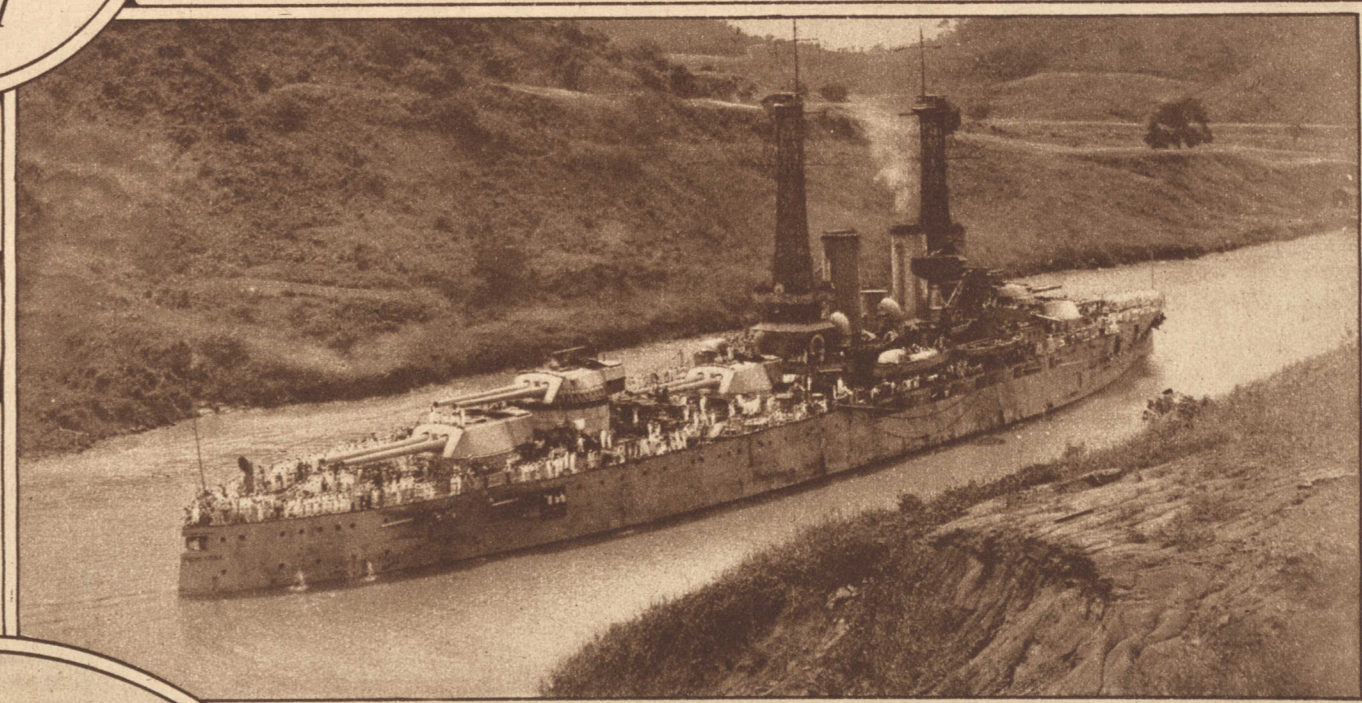
Giant
Dreadnoughts
of the New
Pacific Fleet
Passing Through
the Panama
Canal

THE U. S. S. TEXAS, UNDER TOW BY THE RAIL TRACTORS, IN THE MIDDLE EAST CHAMBER OF THE GATUN LOCKS, the Atlantic Entrance and a Long Reach of the Canal Appearing in the Distance. (Times Wide World Photos.)



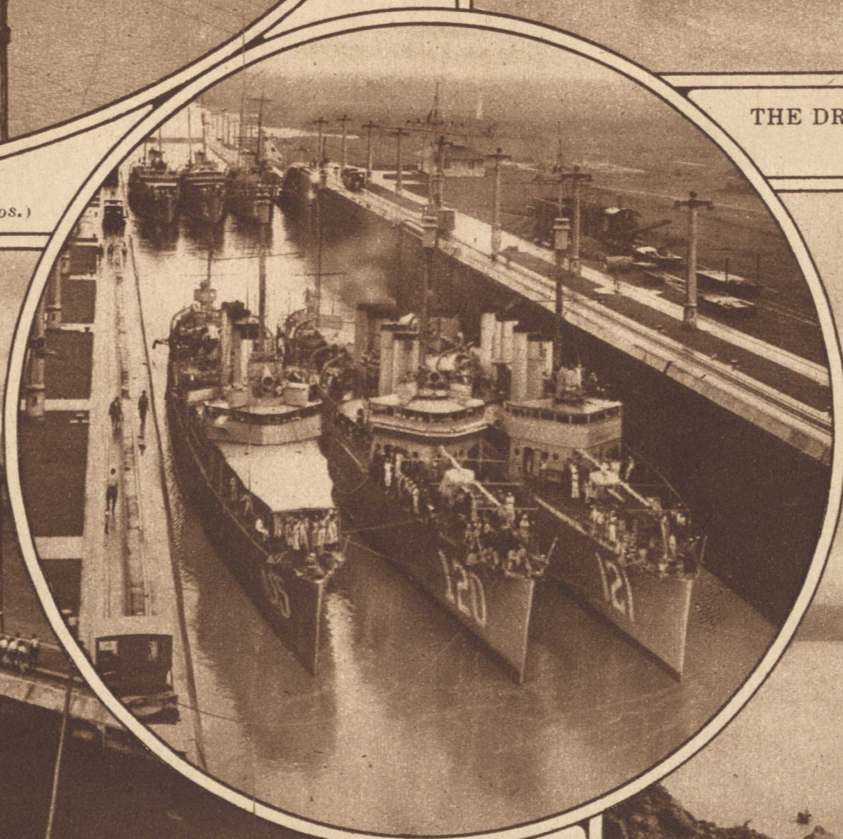
THE NEW MEXICO APPROACHING THE ENTRANCE TO THE GAILLARD CUT, THE CONFLUENCE OF THE CHAGRES RIVER WITH THE CANAL APPEARING AT THE LEFT.

(Times Wide World Photos.)



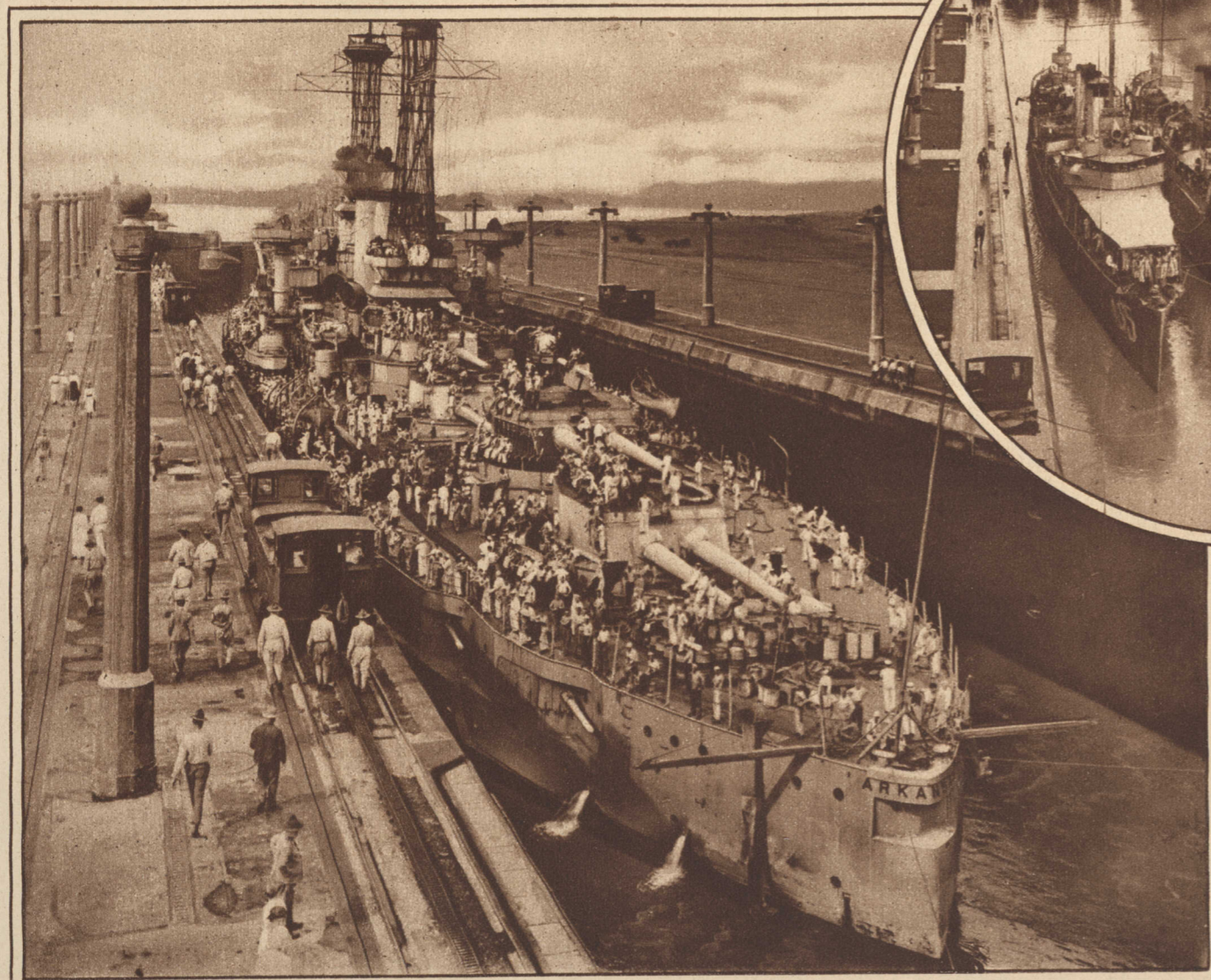
THE DREADNOUGHT NEW YORK PASSING WESTWARD THROUGH THE GAILLARD CUT.

(Times Wide World Photos.)



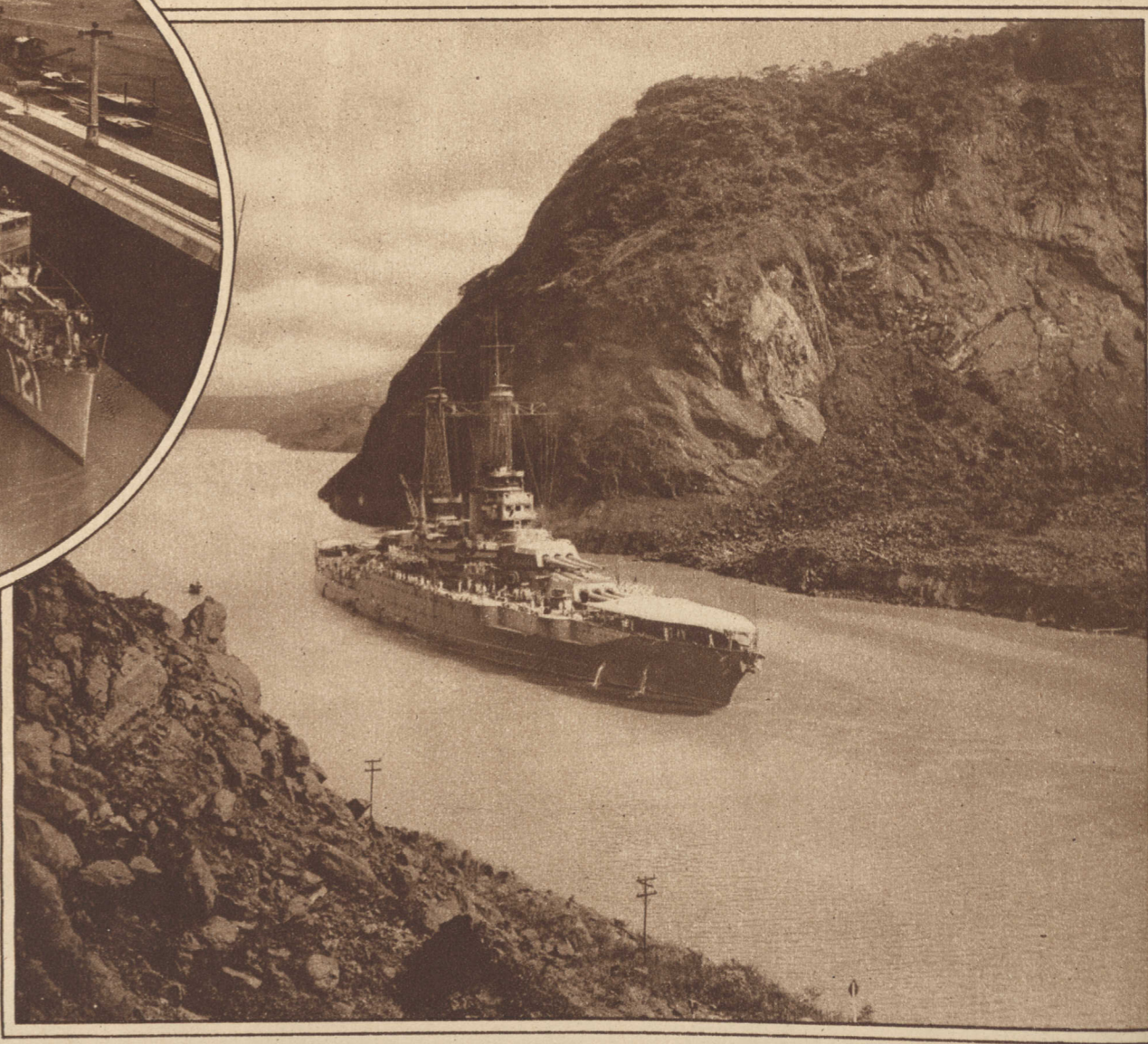
U. S. DESTROYERS PASSING THROUGH THE GATUN LOCKS.

(Times Wide World Photos.)



THE U. S. S. ARKANSAS BEING RAISED IN THE UPPER WEST CHAMBER OF THE GATUN LOCKS TO THE LEVEL OF THE CANAL WATER BEYOND.

(Times Wide World Photos.)



THE NEW MEXICO, ADMIRAL RODMAN'S FLAGSHIP OF THE PACIFIC FLEET, Passing Through the Gaillard or Culebra Cut, the Entire Fleet Making the Passage from Ocean to Ocean with, in the Language of Admiral Rodman, "the Ease of a Fleet of Tugs."

(Times Wide World Photos.)