

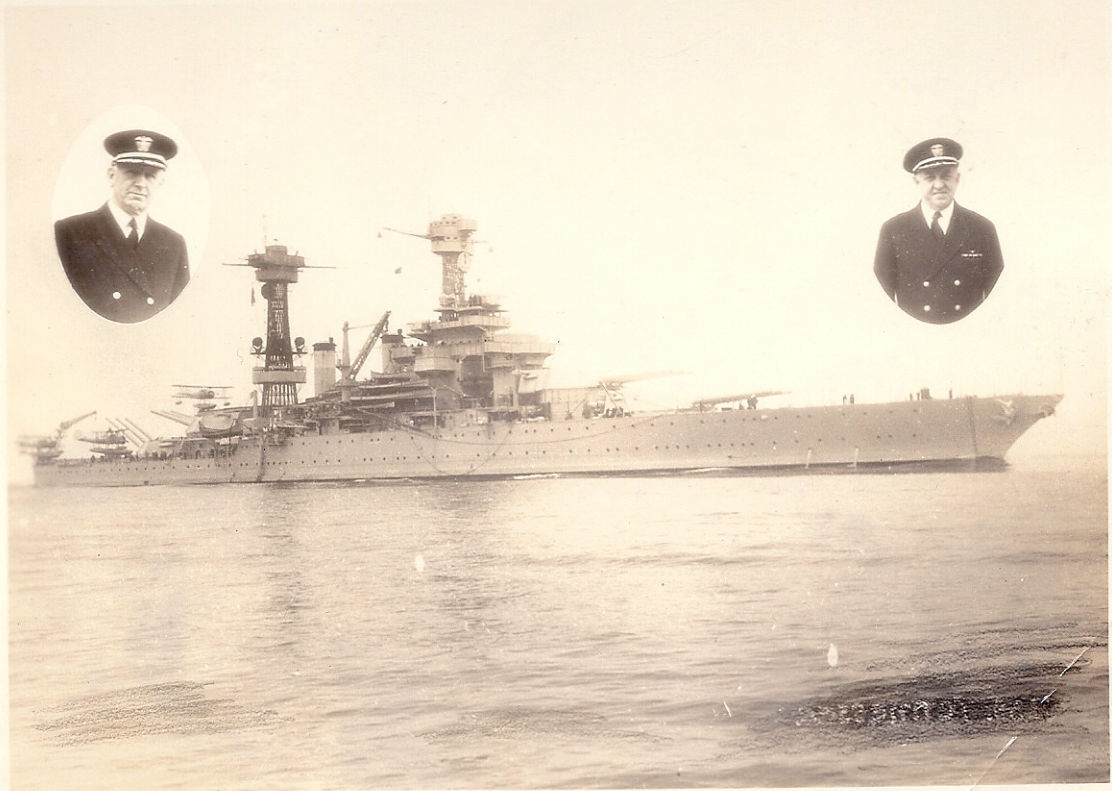
1937

# U. S. S. TENNESSEE

Communication Department

Photos by  
M. D. BOLAND  
Tacoma, Wash.

Bremerton  
Washington





D.H. Gully, Jr.  
Y1c



J.A. Heath  
Ens.



H.P. McIntire  
Ens.



R.B. Kelly  
Ens.



R.H. Tuttle  
Lieut.



W.G. Thompson, Jr.  
Ens.



A.A. Winthrop  
CY



L.R. Conner  
CY



J.D. Dembowski  
S1c



W.H. Covert  
S1c



F.J. Hicken  
Y3c



L.O. Schoch  
Y3c



E.A. Ballard  
Y3c



J. Bailes  
S1c



C.W. Faulk  
S2c



J.J. Lowry  
S1c



M.R. Coleman  
S1c



M.E. Gray  
S1c



E.F. Robel  
S1c



J.L. Starr  
Prtric



H.E. Goldsmtn  
Y3c



W.E. Powers  
S1c



E.K. Thomas  
S1c



J. Polucci  
S1c

R.H. Hagen  
S1c



H.A. Overby  
RM2c



R.C. Middleton  
RM3c



A.J. Smith  
Ch. Rdo. Electr.



R.B. Levin  
Lieut.



P.F. Lanman  
RM3c



R.W. Smith  
RM3c



J.C. Hoyt  
RM2c



J.L. Peters  
RM3c



G. Piculer  
Sealc



P.L. Read  
Sealc



G.W. Olson  
Sealc



G. Miller  
Pvt. USMC



L. Brown  
RM2c



N.M. Saines  
Pvt. USMC



P. Sustus  
Sealc



J.F. Maloop  
Sealc



R.L. Dawes  
Sealc



E.D. Garwood  
Sealc



W.J. McNamara  
Sealc



L.A. Schlarman  
Sealc



G.E. Carrel  
RM2c



L.E. Sorenson  
Sealc



E.T. Graham  
Sealc



E.A. Szymaszyn  
Sealc



J.C. Phillips<sup>R</sup>  
Sealc



H.F. Meyer  
Sea 2C



A.J. Grice  
SM 3C



B.A. Trigg  
SM 2C



L.C. Conwell  
LT (jg)



G.W. Jennings  
SM 1C



O.A. Roach  
SM 3C



J.T. Michalek  
Sea 1C



J.J. Carter  
Sea 2C



C.V. McCutchen  
Sea 1C



F.J. Ritchie  
Sea 1C



J.L. Damon  
Sea 2C



F.I. Soper  
Sea 1C



E.H. Larose  
Sea 1C



Smith  
Sea 2C



R.J. Walker  
SM 2C



C.E. Crowder  
Sea 2C



E.W. Nelson  
Sea 2C



R.G. Penton  
Sea 1C



A.L. Oeser  
Sea 2C



W.V. Petro  
Sea 1C