

# U.S.S. IOWA.

## BATTLESHIP NO. 53.

NUMBER AND ORDER OF PLANS.	
GENERAL INFORMATION AND DATA	✓
OUTBOARD PROFILE	✓
INBOARD PROFILE	✓
LANDING PLATFORM, EMERGENCY PLAT	SIGNAL & NAVIGATING BOD.
SUPERSTRUCTURE DECK	✓
UPPER DECK	✓
MAIN DECK	✓
SECOND DECK	✓
THIRD & SPLINTER DECK	✓
FIRST PLATFORM	✓
SECOND PLATFORM, INCLINED PROTECTIVE PLATFORM	✓
HOLD	✓
DOUBLE BOTTOM	✓
MIDSHIP SECTION	✓
SECTIONS, FORWARD & AFT.	
ARRANGEMENT OF ARMOR	

CORRECTED TO SUIT SHIP.		
PLACE	DATE	CONSTRUCTION OFFICER
NEWPORT NEWS, VIRGINIA.	SEPT. 1, 1920.	
" " "	JAN. 12, 1921.	
" " "	APR. 1, 1921.	
" " "	JUL. 5, 1921.	
" " "	JAN. 6, 1922.	

THE NEWPORT NEWS SHIPBUILDING & DRY DOCK CO.  
NEWPORT NEWS, VA.  
HULL DEPARTMENT.  
**BOOKLET**

**OF**  
**GENERAL PLANS**

SCALE  $\frac{1}{16}$  " = 4' - 1 FT DATE 9-1-20.

DRAWN BY MR. SM.

TRACED BY MR. SM.

CHECKED BY A. L. G. AND.

ASST. CHIEF DRAFTSMAN

DRAWING NO.

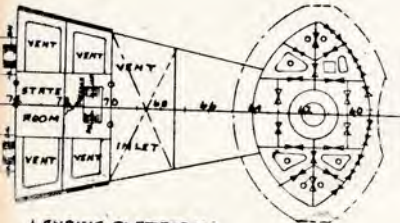
**98601**

420

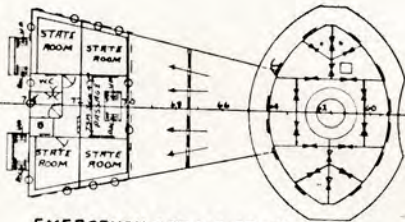
CHIEF DRAFTSMAN  
*E. F. Heath*  
ASST. NAVAL ARCHITECT

NAVAL ARCHITECT

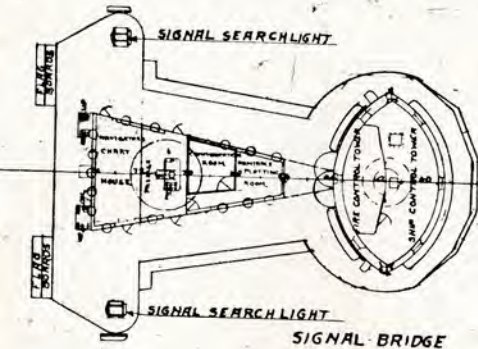
DATE

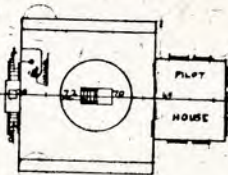


**LANDING PLATFORM**



**EMERGENCY CABIN PLATFORM**





**NAVIGATING BRIDGE**

U.S.S. IOWA:  
UPPER DECK.  
SCALE 1" = 1 FOOT.

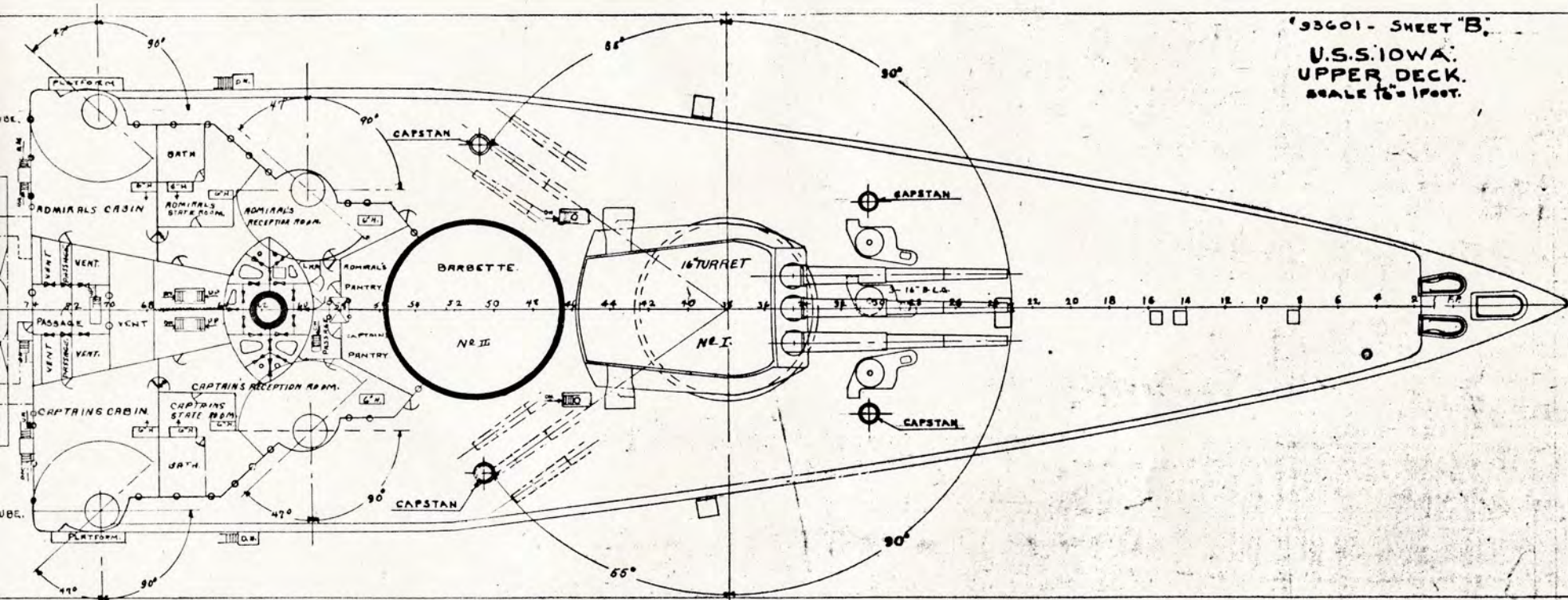


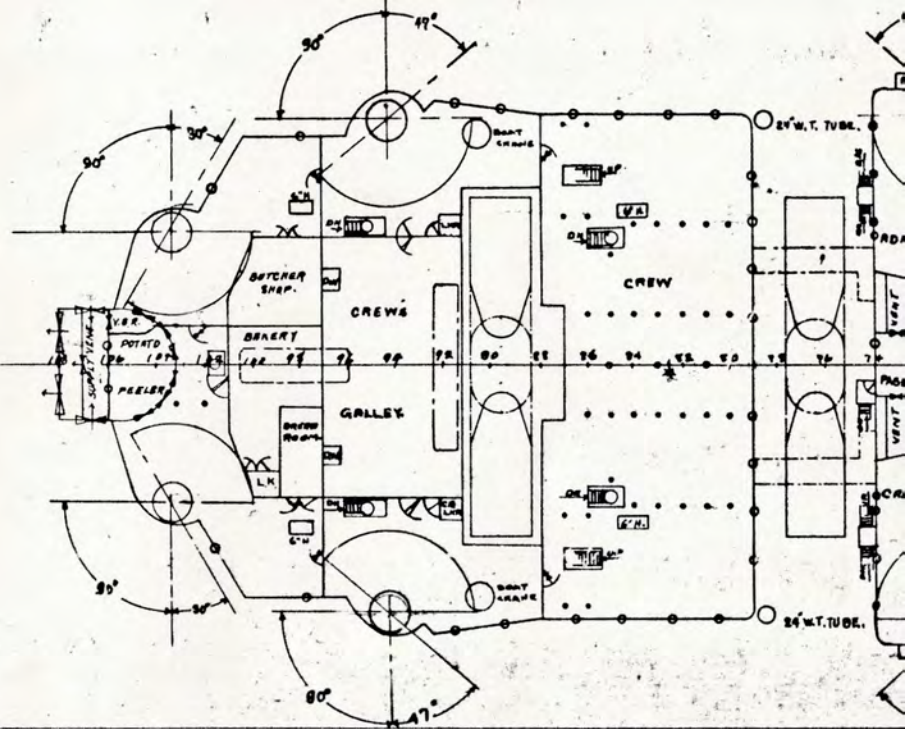


Diagram illustrating the layout of a ship's deck, showing various storage areas and their distances from the bow (left).

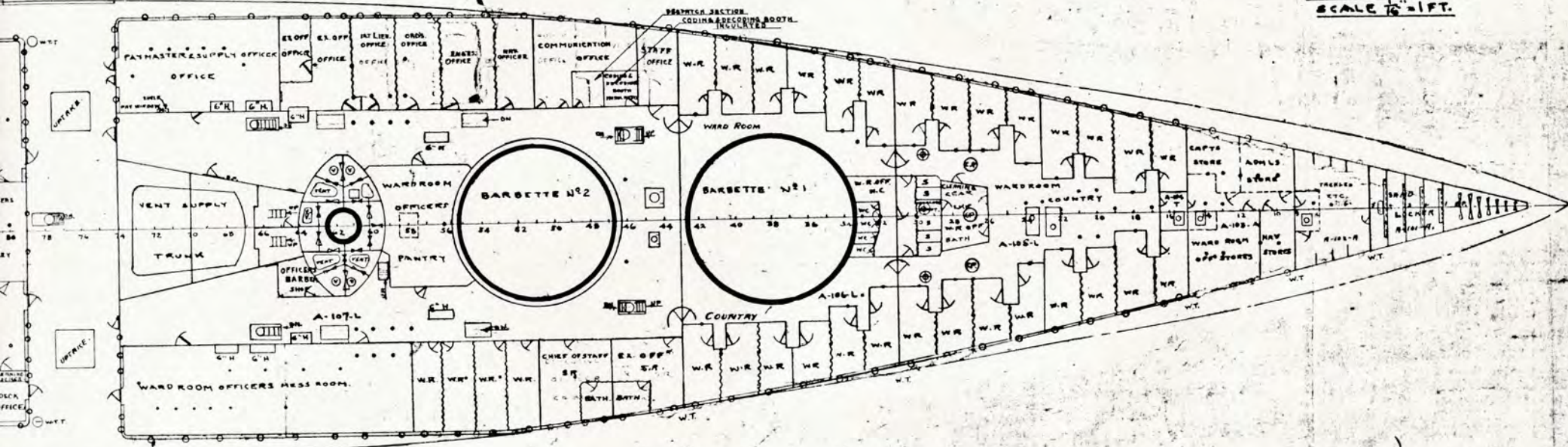
The layout is divided into sections by diagonal lines, with distances marked along the horizontal axis:

- Section 1 (Bow):** S.D. STORES (TITLE+PRIN) D-432-A (Distance: 15')
- Section 2:** MINE TRACK STORAGE: D-430-A (Distance: 15')
- Section 3:** S.D. STORES (TITLE+LUMBER) D-429-A (Distance: 15')
- Section 4:** SHIP STORES D-426-A (Distance: 15')
- Section 5:** S.D. STORES (TITLE+OILS) (Distance: 15')
- Section 6:** S.D. STORES (TITLE+LUMBER) (Distance: 15')
- Section 7 (Stern):** CLOTHING + SMALL STORES D-427-A (Distance: 15')

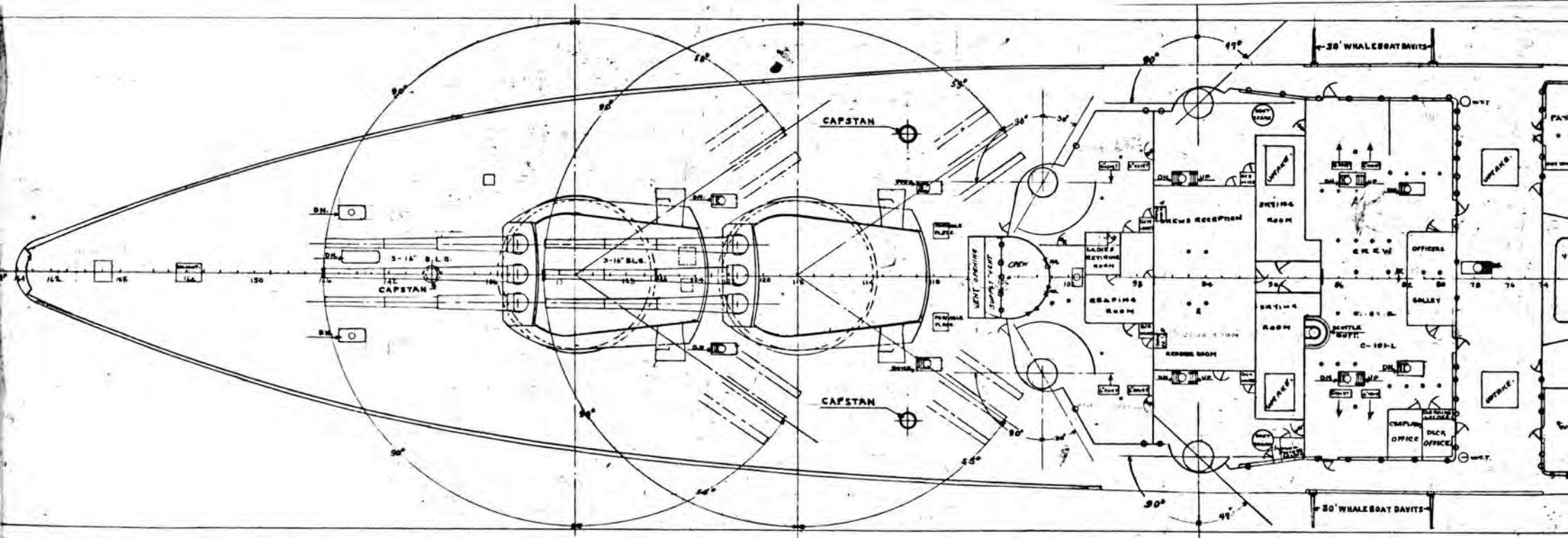
Additional labels include "CYLINDER" and "D-432-A" near the bow.



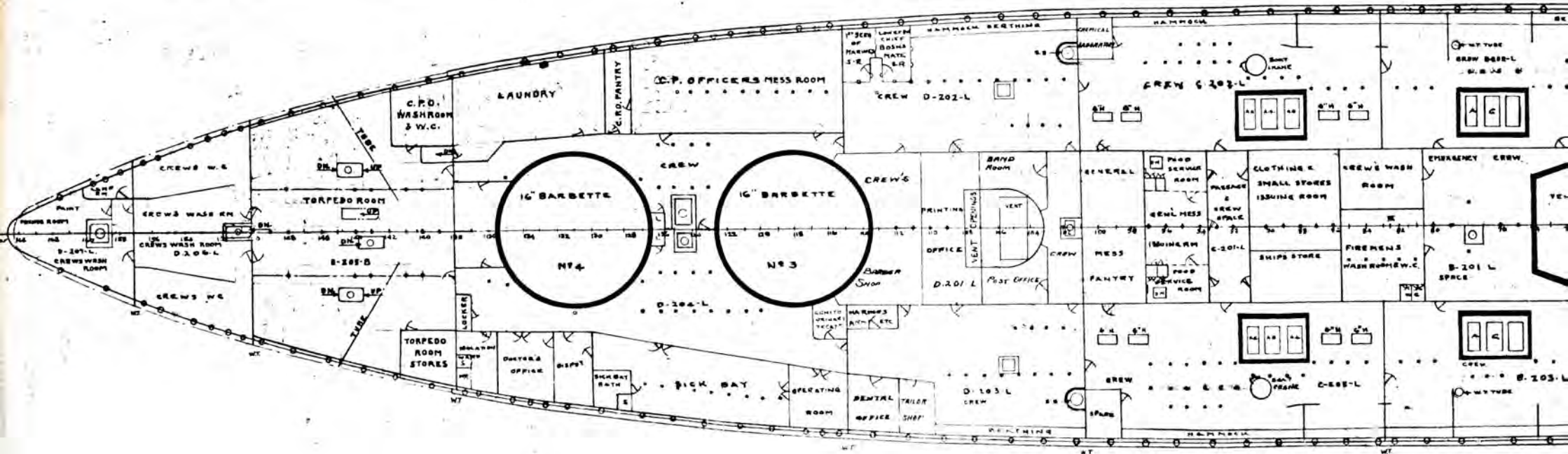
U.S.S. "IOWA"  
MAIN DECK.  
SCALE  $\frac{1}{16}$ " = 1 FT.



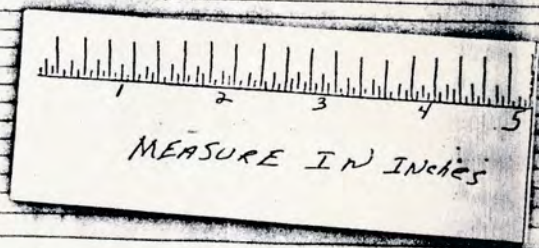




U.S.S. "IOWA"  
SECOND DECK.  
SCALE 7/8" = 1 FOOT.

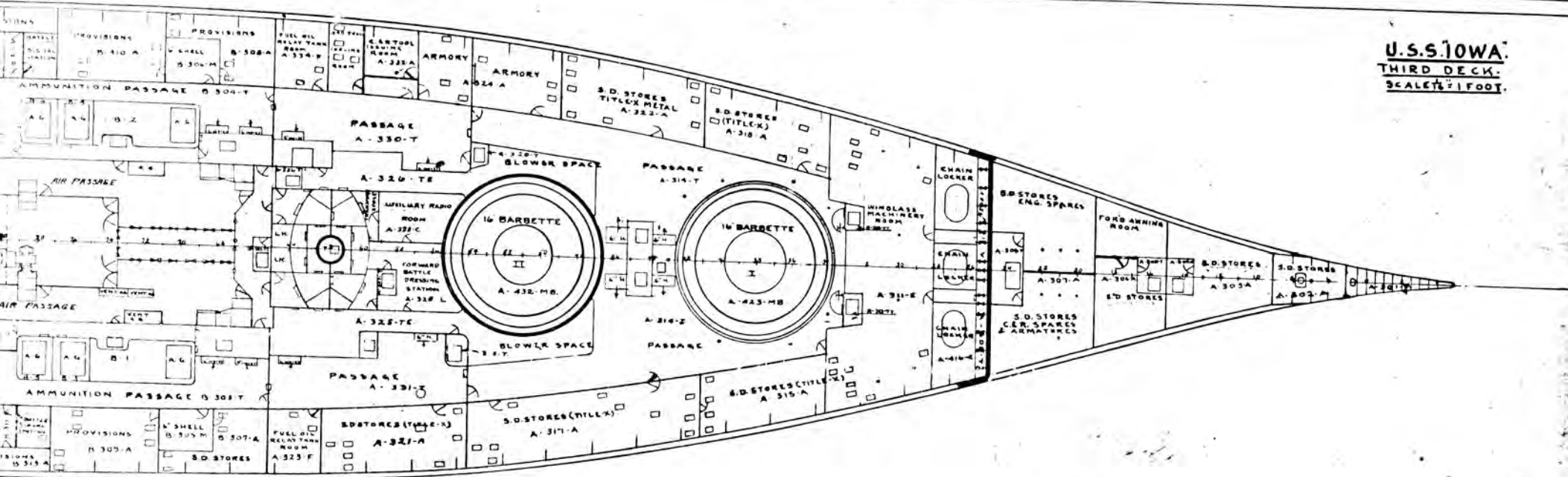


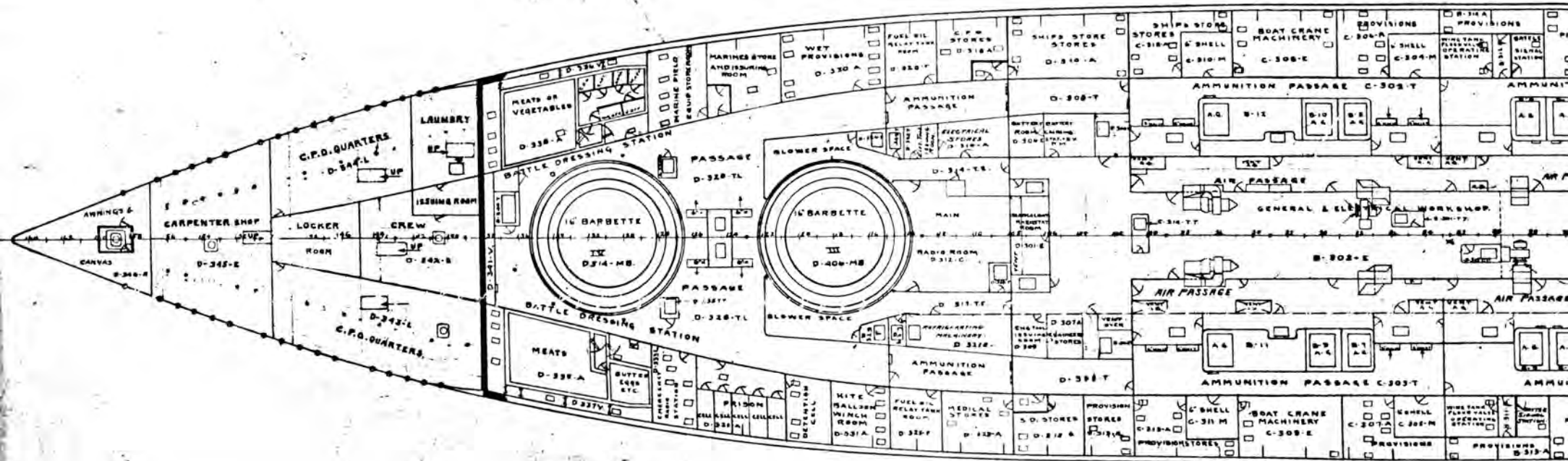
OUTBOARD PROFILE



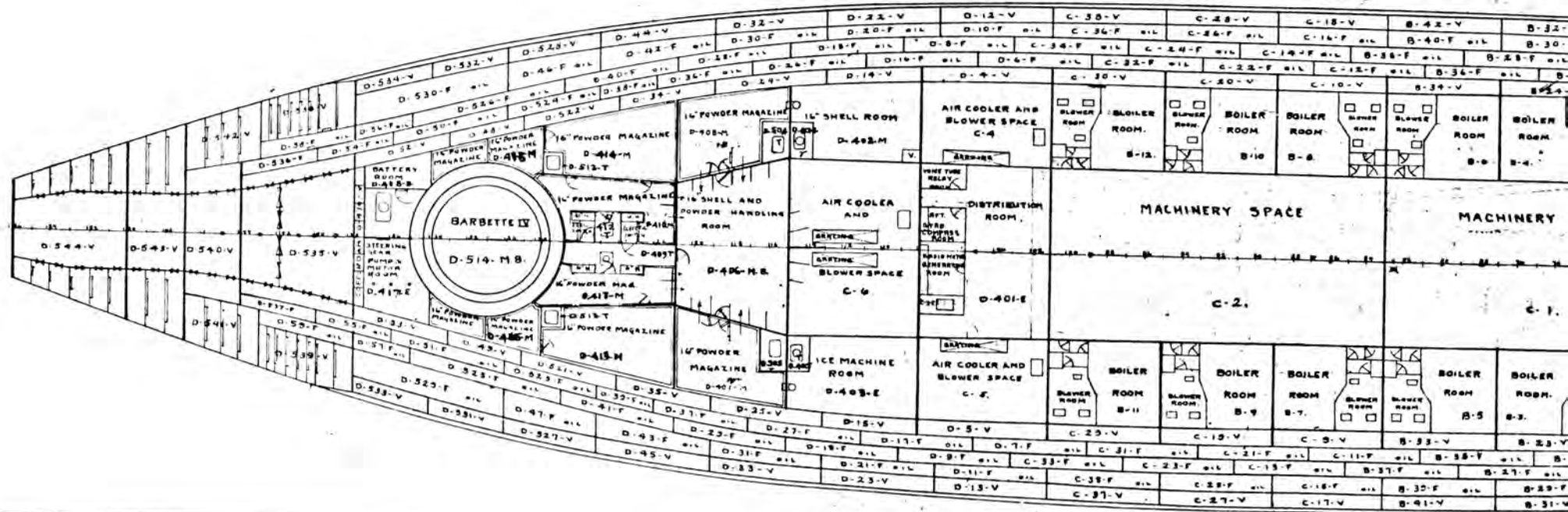


U.S.S. IOWA.  
THIRD DECK.  
SCALE 1/8" = 1 FOOT.



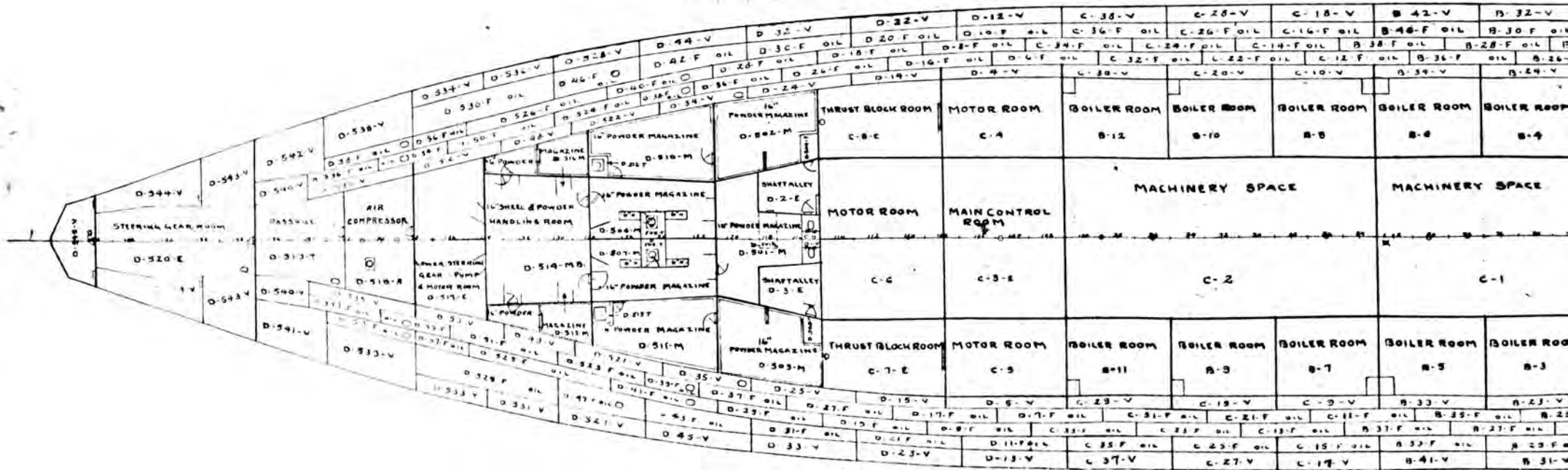










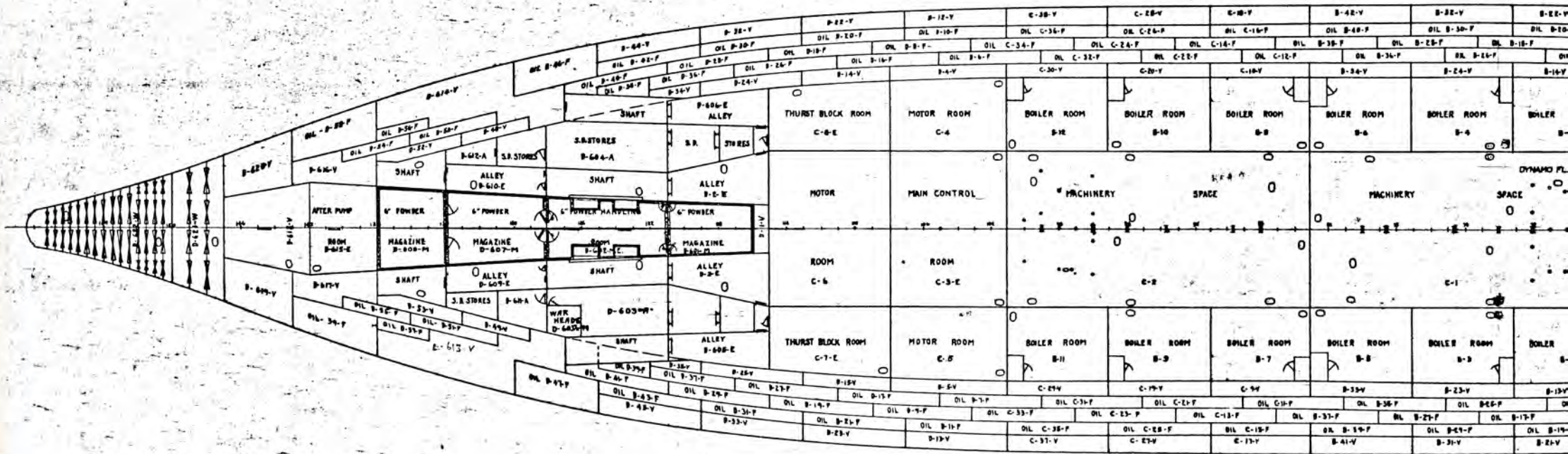


This diagram is a detailed plan view of the USS Arizona (BB-39), showing the layout of the ship's hull. The ship is oriented horizontally, with the bow to the right. The plan view includes the following compartments and features:

- Boiler Rooms:** Located along the starboard (top) and port (bottom) sides, labeled B-1 through B-32.
- Stores:** Numerous storage compartments are labeled, including S.B. STORES, S.B. STORES, and S.B. STORES.
- Gun Turrets:** The main gun turrets are labeled A-1 through A-32, arranged along the top and bottom edges of the hull.
- Mechanical Spaces:** Various mechanical spaces are labeled, including SPACE, DYNAMO FLAT OVER, and PUMP ROOM.
- Other Compartments:** Other compartments include BOILER ROOM, SPACE, and various smaller storage and utility spaces.

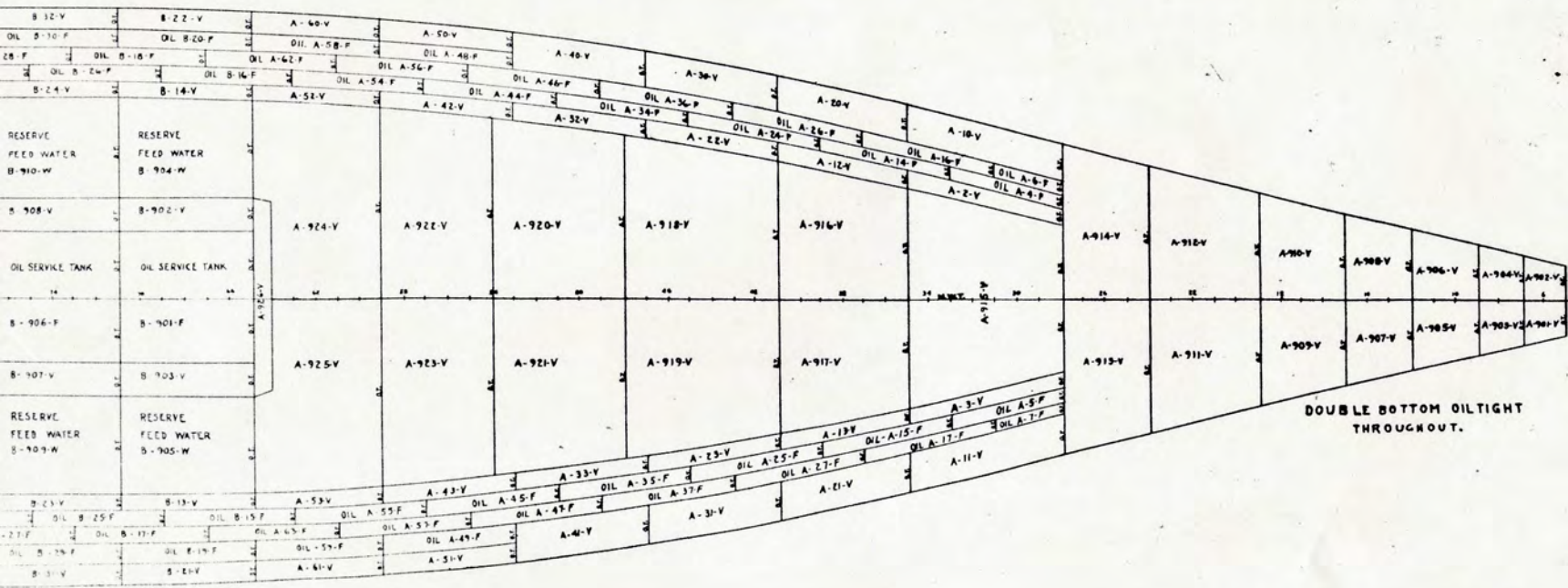
The diagram is a technical drawing showing the internal layout of the ship's hull. It includes numerous alphanumeric labels for specific compartments and equipment. The ship's bow is on the right, and the stern is on the left. The plan view shows the arrangement of boiler rooms, stores, gun turrets, and other mechanical spaces. The diagram is a detailed technical drawing of the ship's hull layout.

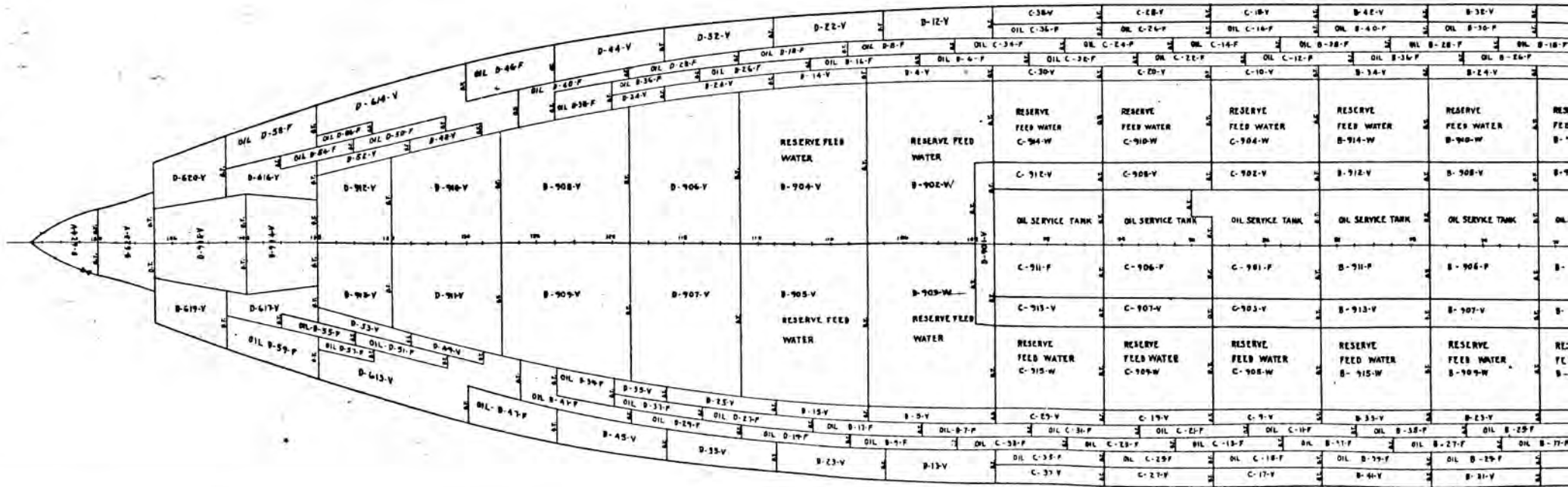






U.S.S. "IOWA"  
DOUBLE BOTTOM.  
SCALE  $\frac{1}{16}$ " = 1 FOOT.





# DIMENSIONS.

Distance between perpendiculars	660'-0"	3 shafts outboard water	from base line
Section fore of fore perp.		" outboard water	" " "
Length over all	684'-0"	5	propeller four bladed dia.
Two of straight keel		"	" pitch uniform
Bottom moulded d.w.l.		"	" area developed
Bottom extreme to outside of armor	106'-0"	"	" projected
" " " plating		"	" inboard centre fore of a.p.
Bottom moulded at side to upper deck		"	" outboard " " "
Top of designers above bottom of keel	33'-0"	ENGINE S.	
Bottom moulded above base line	32'-10 1/2"	4	shaft electric propulsion
Displacement normal	43000	2	G.E. turbo generators &
Per inch at w.l.		4	induction motors
At midship section	50 ft.	5	H.P.
L.W.L. plane	" "	8	P.M.
Wetted surface	" "	3	speed
Distance of L.W.L. plane aft of m.p.		BOILERS.	
Fore of above base line		12	water tube
Bottom		type Babcock & Wilcox oil burners.	
Bottomverse metacentre above C.B.		heating surface 50 ft.	
Bottom " " " C.B.		superheated " " "	
Efficient of fineness block		dia. of main steam pipe at h.p. turbine	
" " " midship sec.		smoke pipe ft. above base line.	
" " " L.W.L.			
Length to beam.			
Center axis forward	A.M.		
Distance to fore of a.p. on fore	outboard		
Distance to fore of a.p. on fore	inboard		
Engine spacing throughout			
Number of water tight compartments			
Number of oil tight compartments			
Fore of 15' 0" aft of fore perp.			
Line to bottom of keel	1 1/2"		
Number of frames			
List inboard incline down aft. ang.			
Outboard " " " "			
Inboard inverse at angle with ship			
Outboard inverse " " " "			
Inboard aft fore	from aft of ship		
Inboard	" " "		
Outboard aft fore	" " "		
Inboard & aft fore	from base line		



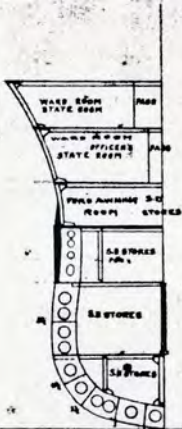


# U.S.S. "IOWA"

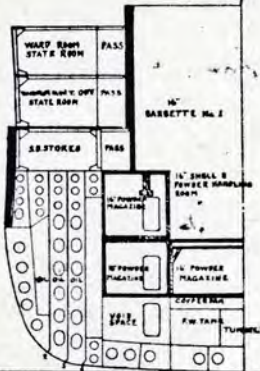
## CROSS SECTIONS.

SCALE 1" = 1 FOOT.

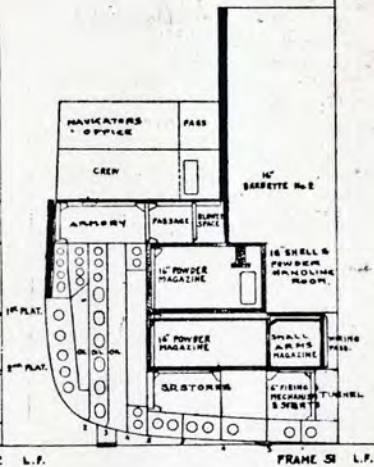




FRAME 18 L.F.



FRAME 38 L.P.





NAVIGATING BRIDGE

SIGNAL BRIDGE

EMERGENCY PLAC

LANDING PLAT.

SUPERSTRUCTURE DECK.

UPPER DECK.

MAIN DECK.

2<sup>ND</sup> DECK.

3<sup>RD</sup> DECK.

SHIP  
CONTROL  
TOWER

ADMIRAL'S  
RECEPTION  
ROOM

EXECUTIVE  
OFFICERS OFFICE

PASSAGE

CREW

FUEL OIL RELAY  
TANK ROOM

PASSAGE

PASSAGE

PASSAGE

EVAPORATOR  
ROOM

DISTRIBUTION  
ROOM

FITTING  
ROOM

S.A. STORES

S.A. STORES

1<sup>ST</sup> PLAT.

2<sup>ND</sup> PLAT.

L.F.

FRAME 62 L.F.

NAVIGATING BRIDGE

PASSAGE

SIGNAL BRIDGE

PASSAGE

EMERGENCY PLAT.

VENT

LANDING PLAT.

VENT

SUPERSTRUCTURE DECK.

ADMIRAL'S CABIN

VENT

UPPER DECK.

MASTER'S OFFICE  
OFFICER'S OFFICE

PASSAGE

MAIN DECK.

CREW

2<sup>ND</sup> DECK.

SEMPER  
BELL

UPTAKE

FLAP

A  
FLAP

FLAP

3<sup>RD</sup> DECK.

FUEL OIL REL.  
TANK ROOM

BOILER ROOM

MACHINERY SPACE

OIL

OIL

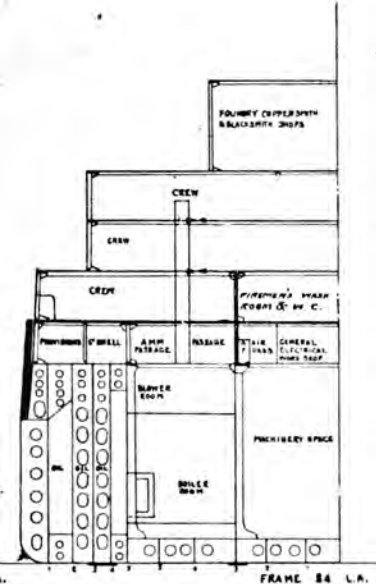
OIL

OIL

OIL

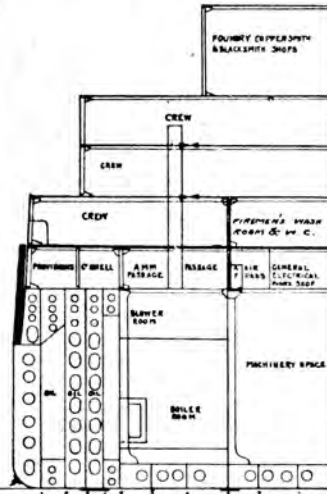
L.A.

FRAME 70 L.F.

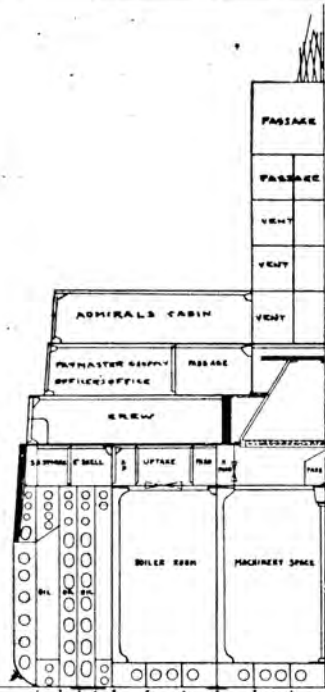




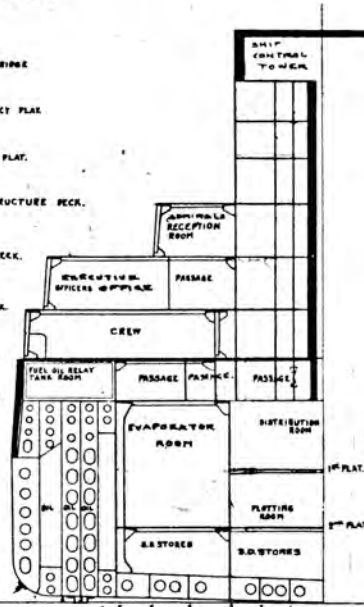
FRAME 118 L.A.



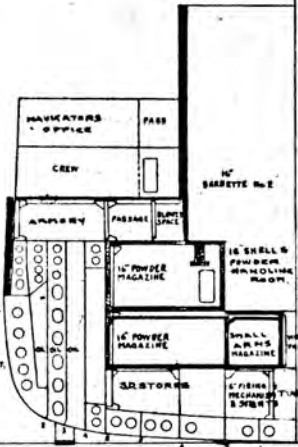
FRAME 84 L.A.



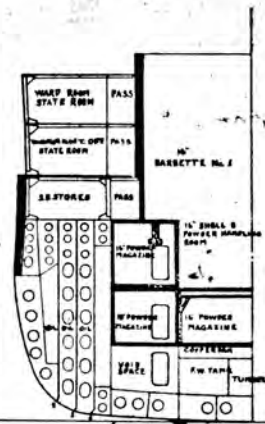
FRAME 70 L.P.



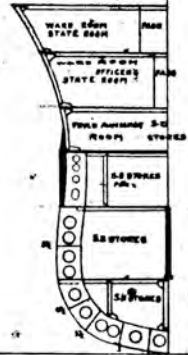
FRAME 62 L.P.



FRAME 51 L.P.



FRAME 38 L.P.



FRAME 18 L.P.





BARRETTE HALL

BLIND SPACE

12' SHELL & POWDER SAMPLING ROOM

8 BAFT ALLET

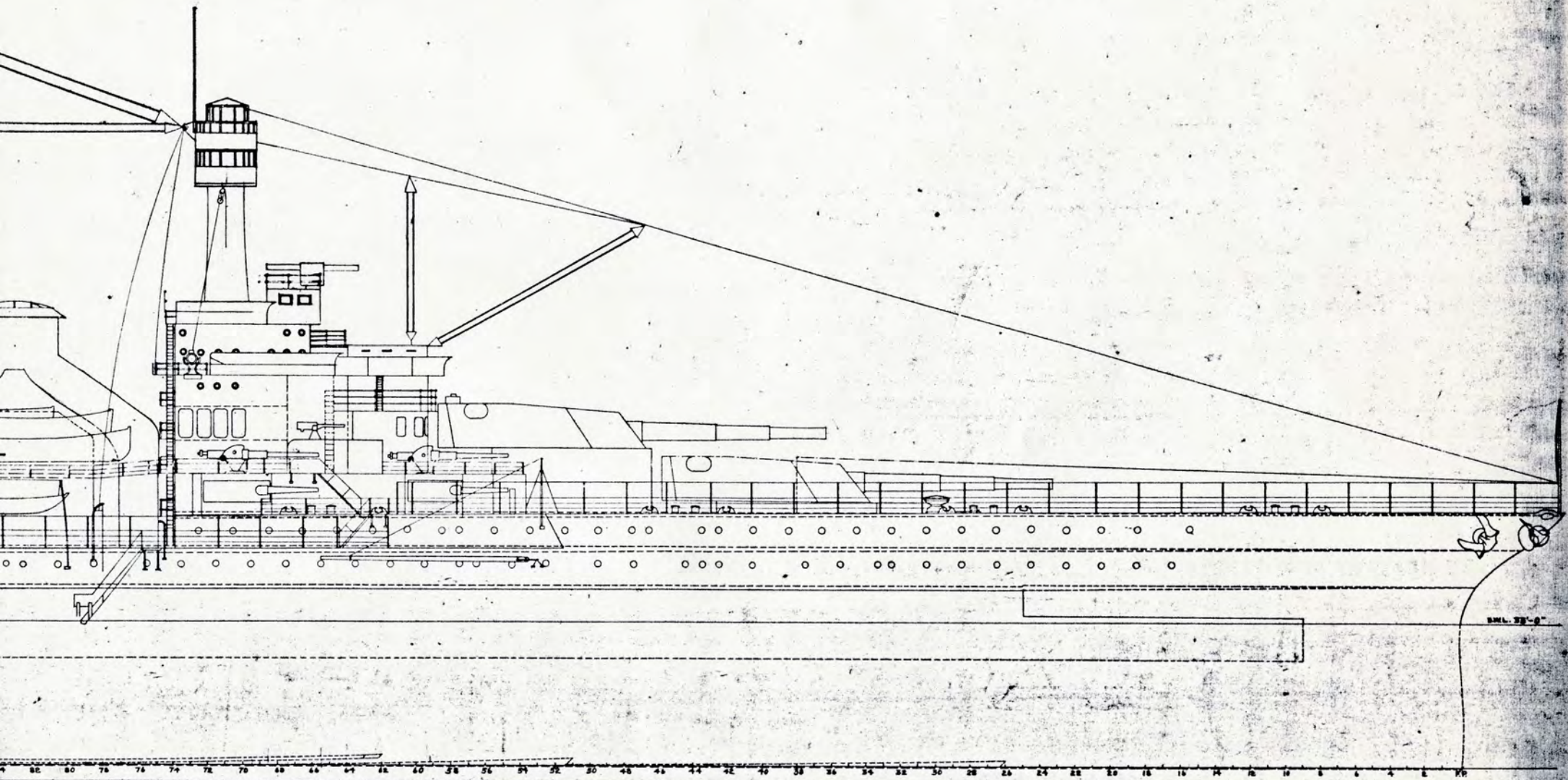
12' POWDER MAGAZINE

AIR

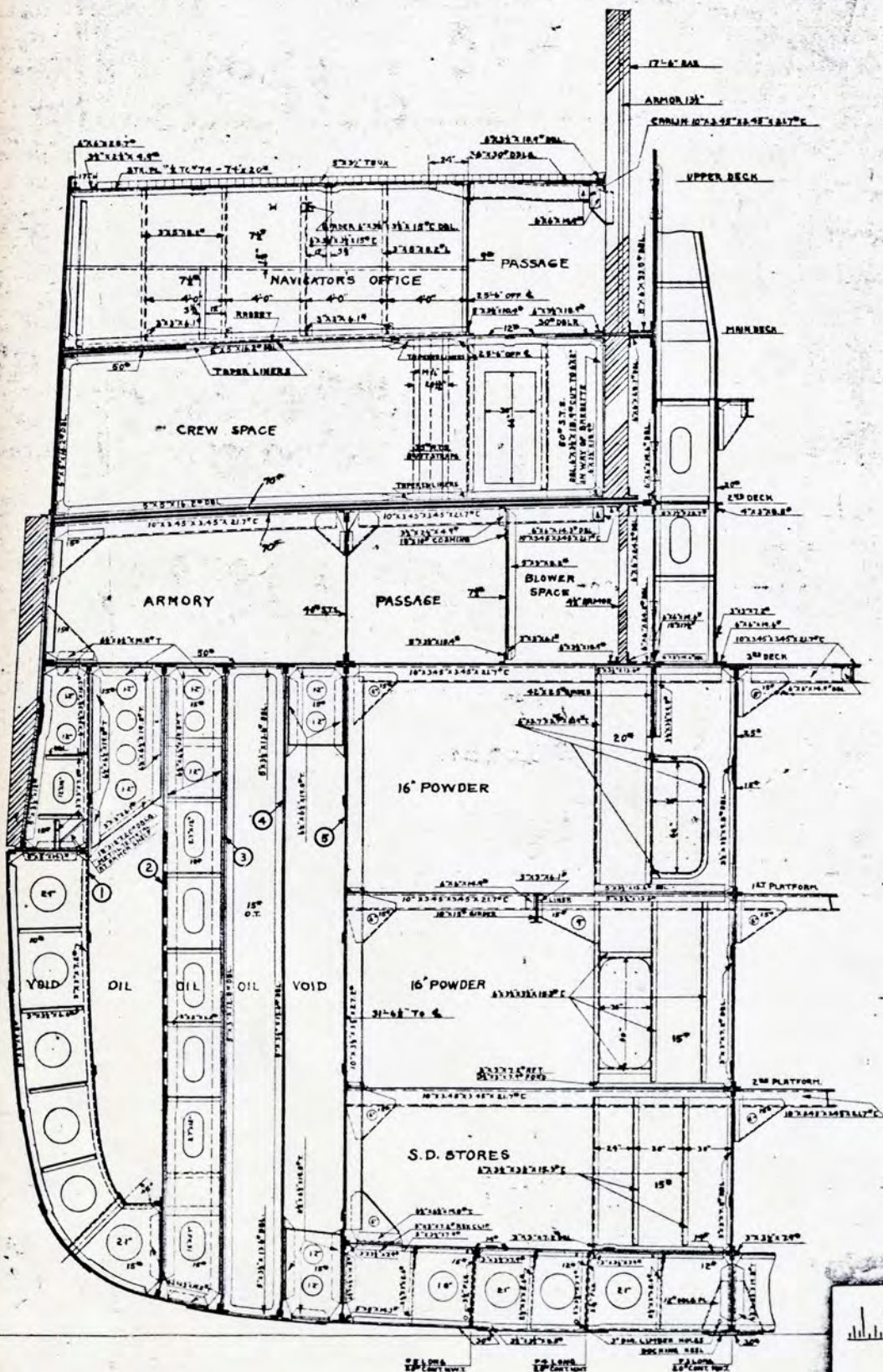
12' POWDER MAGAZINE

6' POWDER MAGAZINE

FRAME 110 L.A.







FRAME 51 LOOKING FORWARD  
SECTION THRU TURRET II

BATTLESHIP No. 102  
"IOWA"

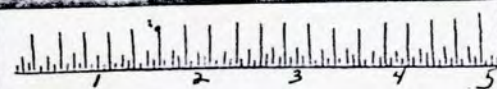
OFFICE OF  
SUPTG. NAVAL CONSTRUCTOR  
Newport News, Va.

FORWARDED TO BUREAU *Aug. 11, 1912*

WITH LETTER NO. *1026-1*

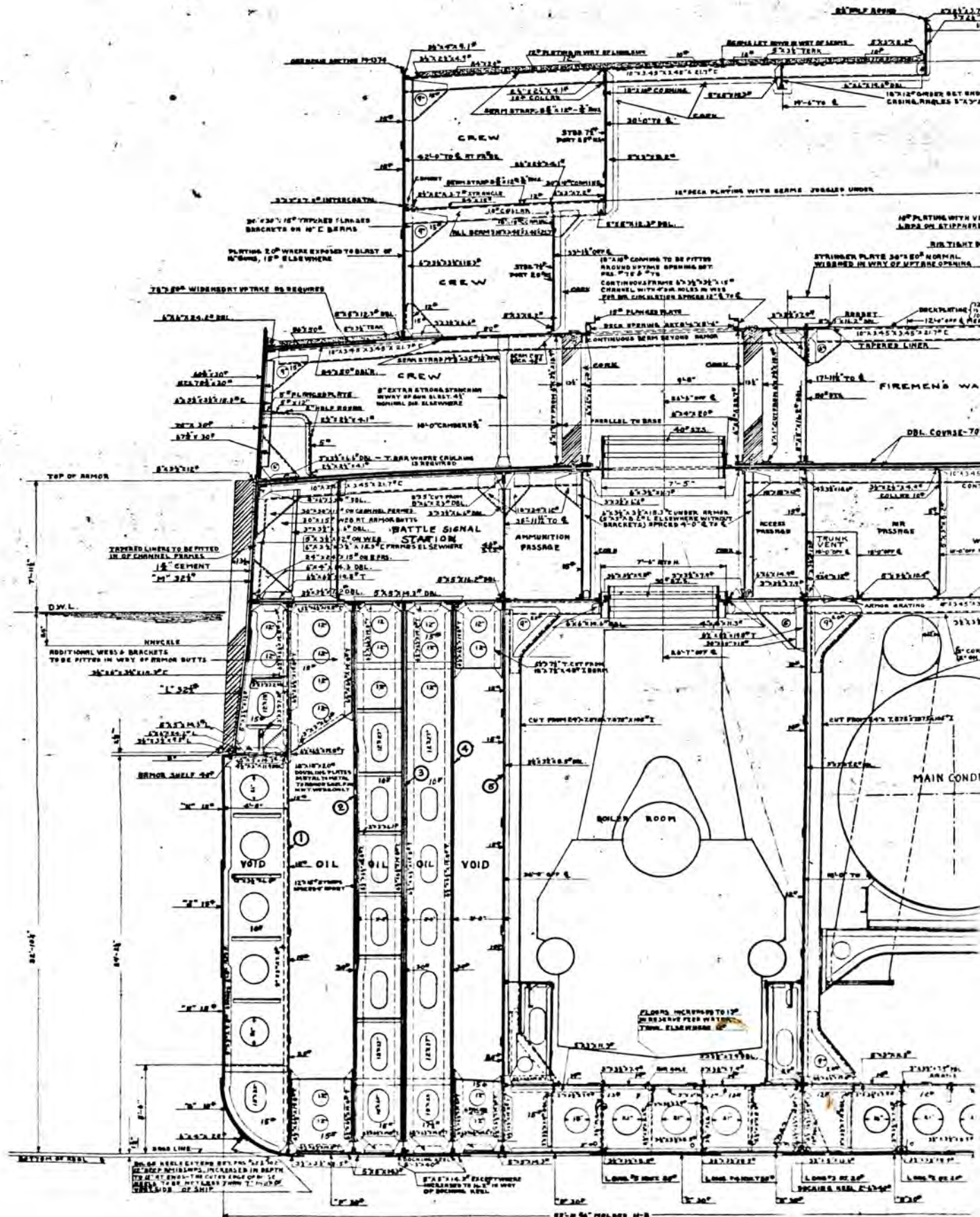
*Wm. B. Smith*

MADE IN U.S.A.



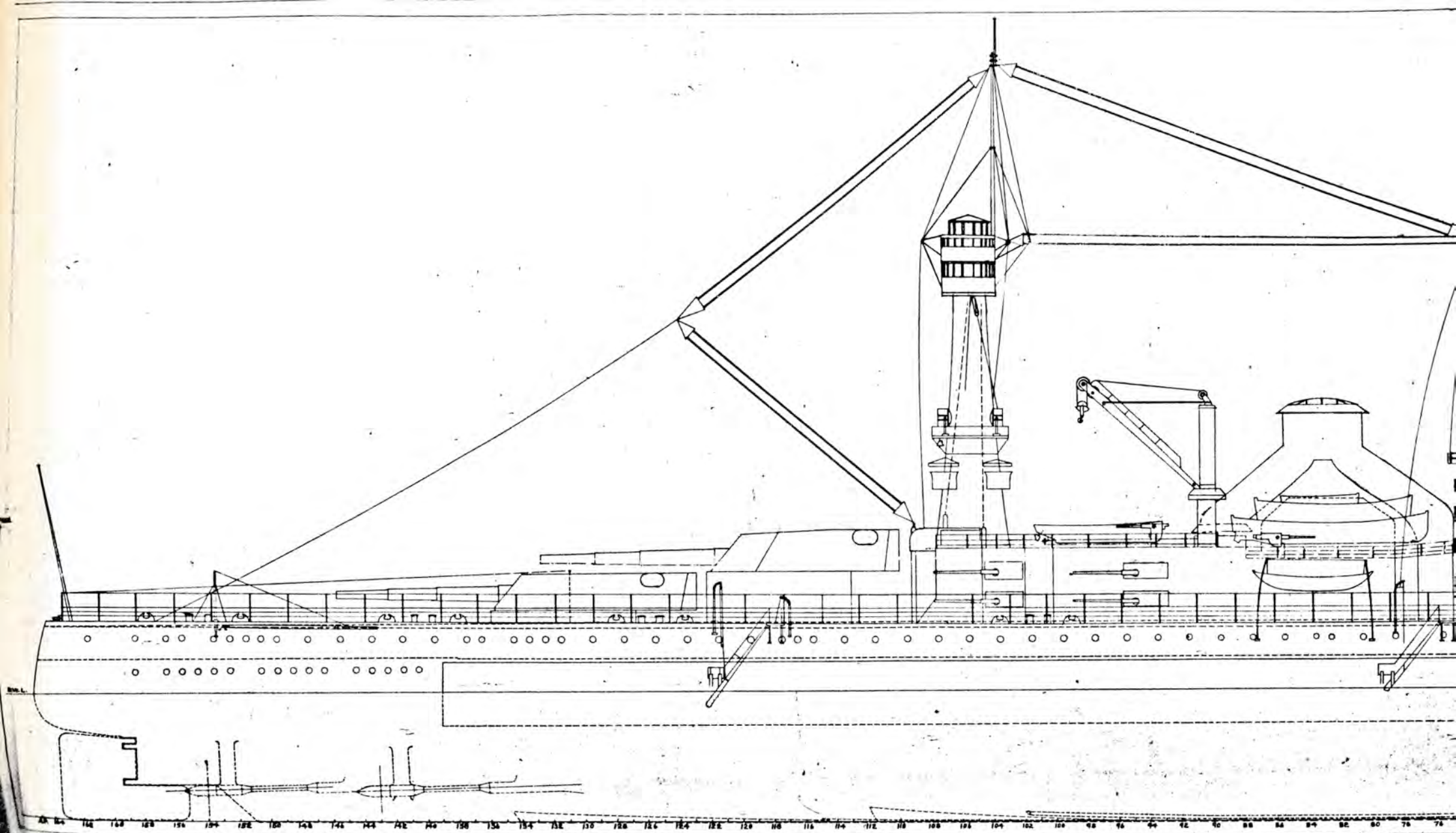
MEASURE IN INCHES

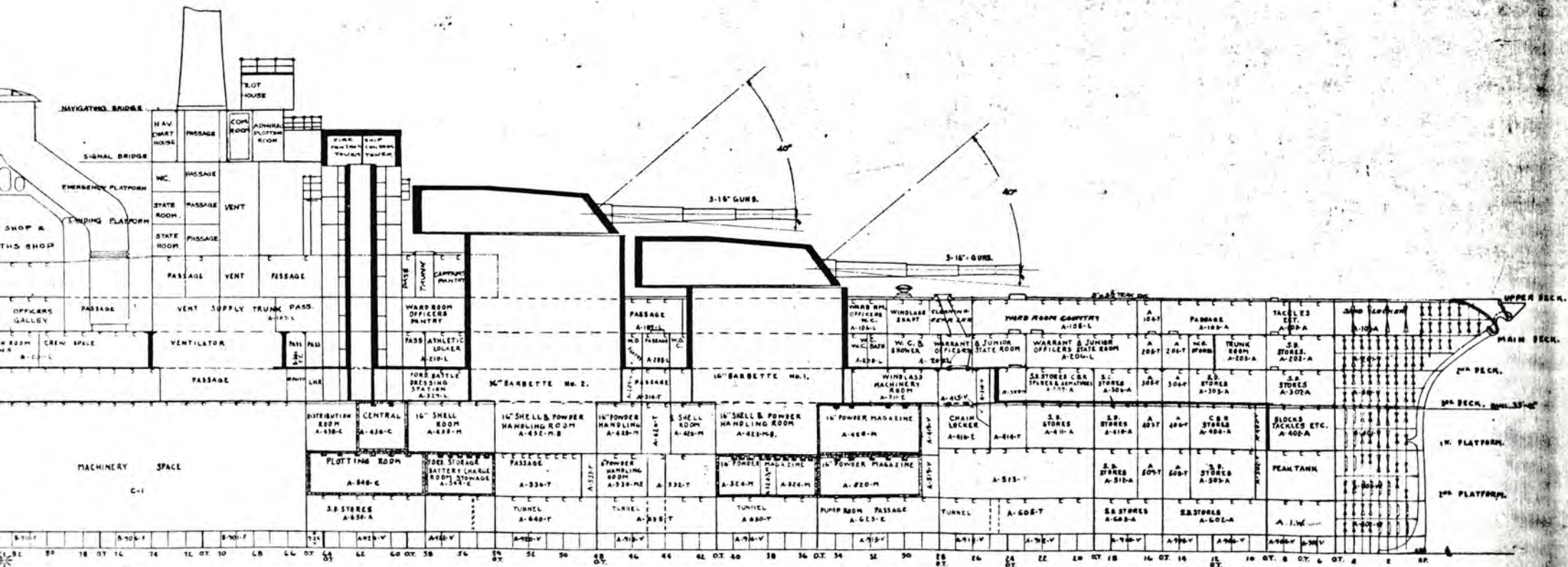




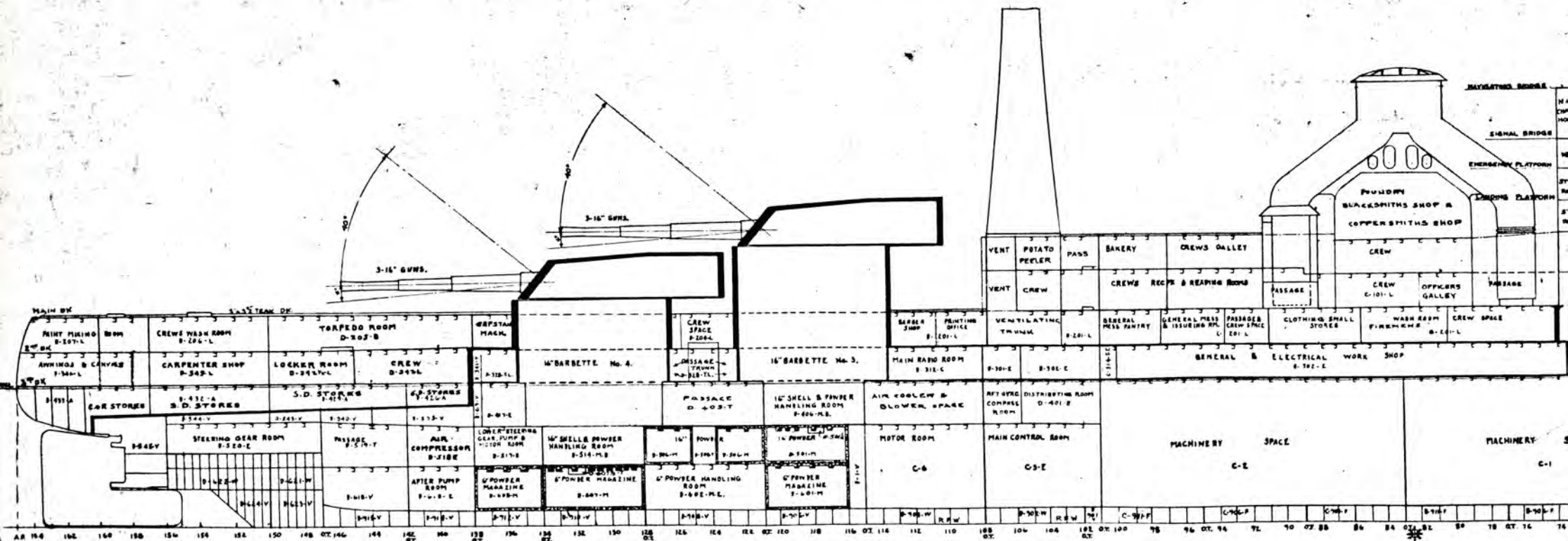




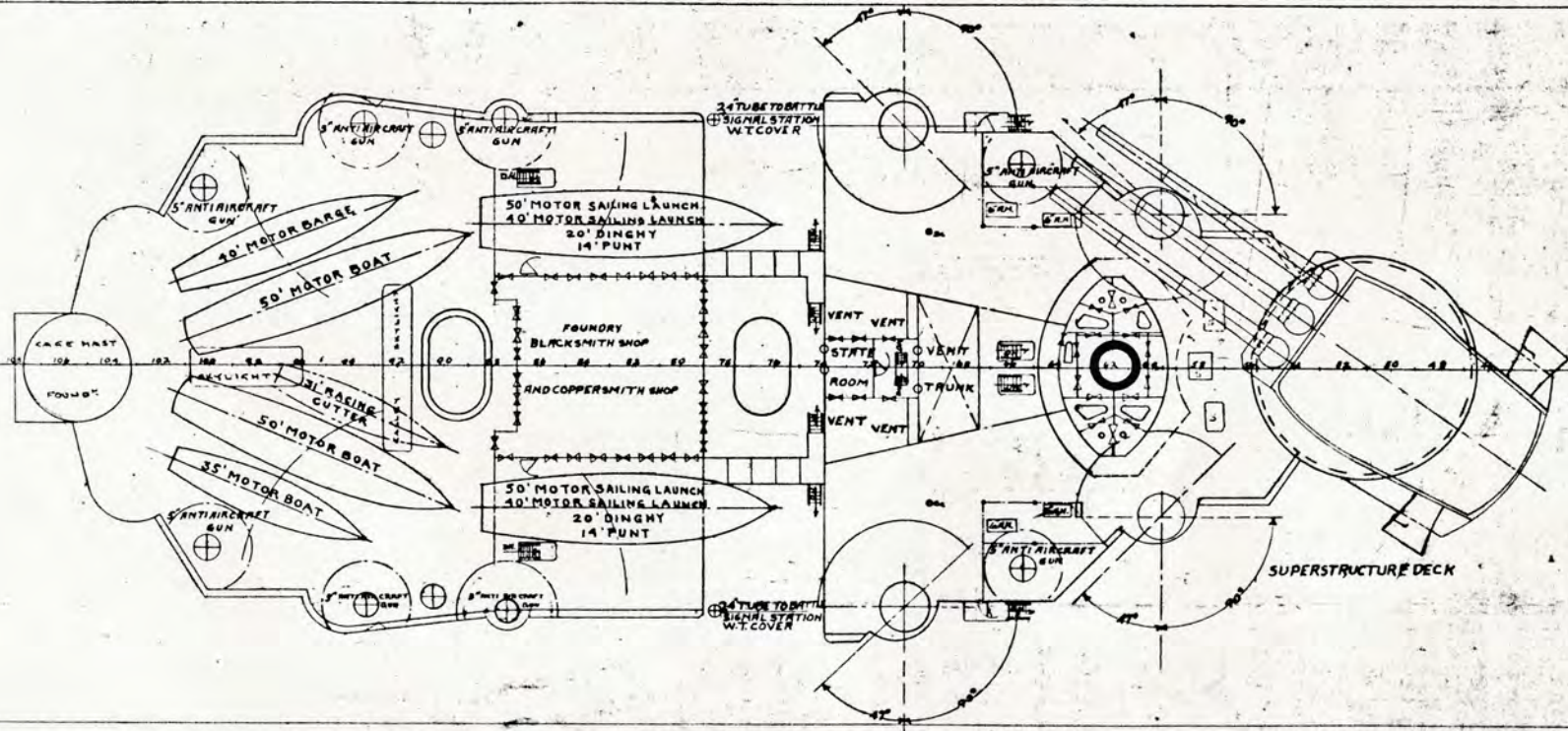


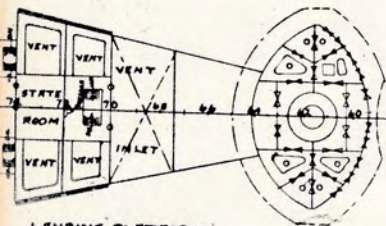




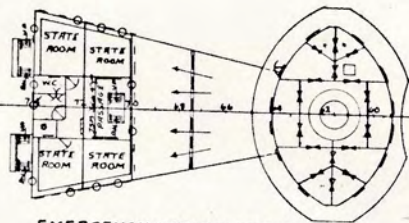




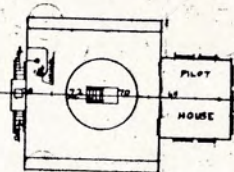
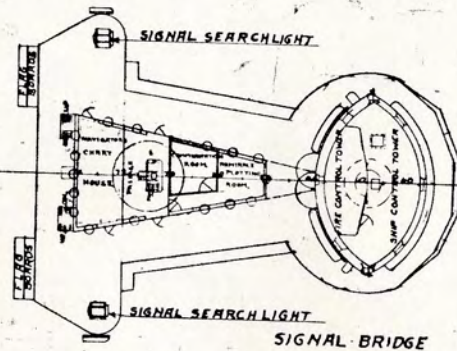




LANDING PLATFORM



EMERGENCY CABIN PLATFORM



NAVIGATING BRIDGE