

# LATEST OFFICIAL PICTURES OF OUR NAVY IN ACTION



Navy pilots can hold position in formation flying with wings almost touching wings. Each plane, in "tight" formations,

is a protection to its neighbors. These planes are Yought-Sikorsky dive bombers from the SARATOGA.



"V for Victory" is an old pattern for Navy flyers. This formation of a scouting squadron all based on airplane carrier Lexington when not aloft, seeking out forces of the enemy. America's naval air force is admittedly the best in the world, both in men and planes.

## America's First Line of Defense As Streamlined As It Is Alert

Our new and modern warships and streamlined older vessels are rare sights to Americans these days. They are all at sea in maneuvers getting ready for any emergency.

On this page you see the latest photographs of the fleet and air arm in action. They were released by the Navy Department. They show our Navy dive bombers — "The Eyes of the Fleet."

They show the "Terriers of the Sea" — the destroyers, as they utilize their tremendous speed to

serve as submarine protection for the heavier fighting craft.

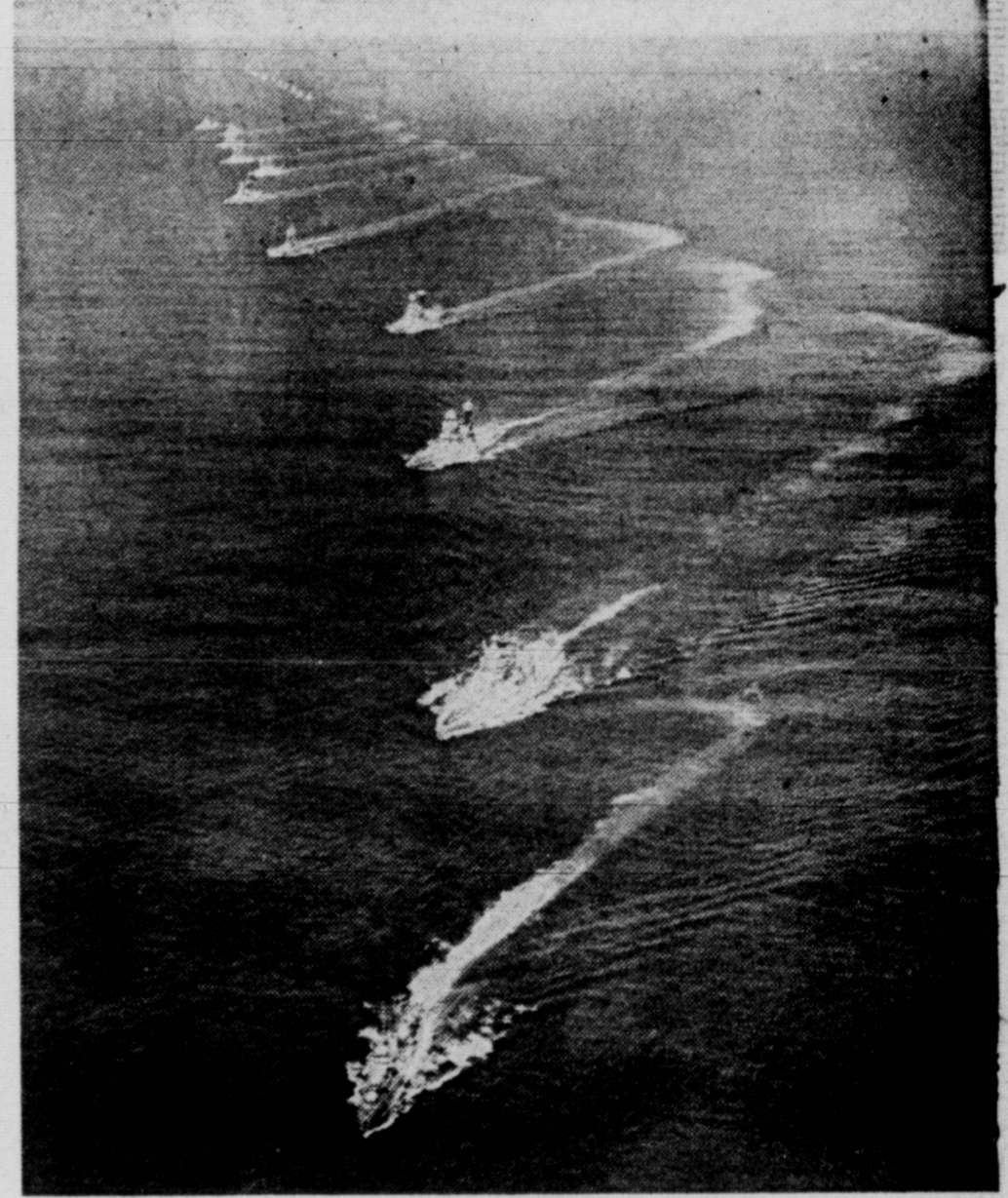
They show the heavily armed and heavily armored "Battle Wagons" as these floating fortresses weave through the intricate maneuvers necessary to best utilize their power effectively.

The Navy is the nation's only three-dimensional fighting force. It fights aloft through its planes; laterally, through its surface ships, and finally in the depths, through its submarines.



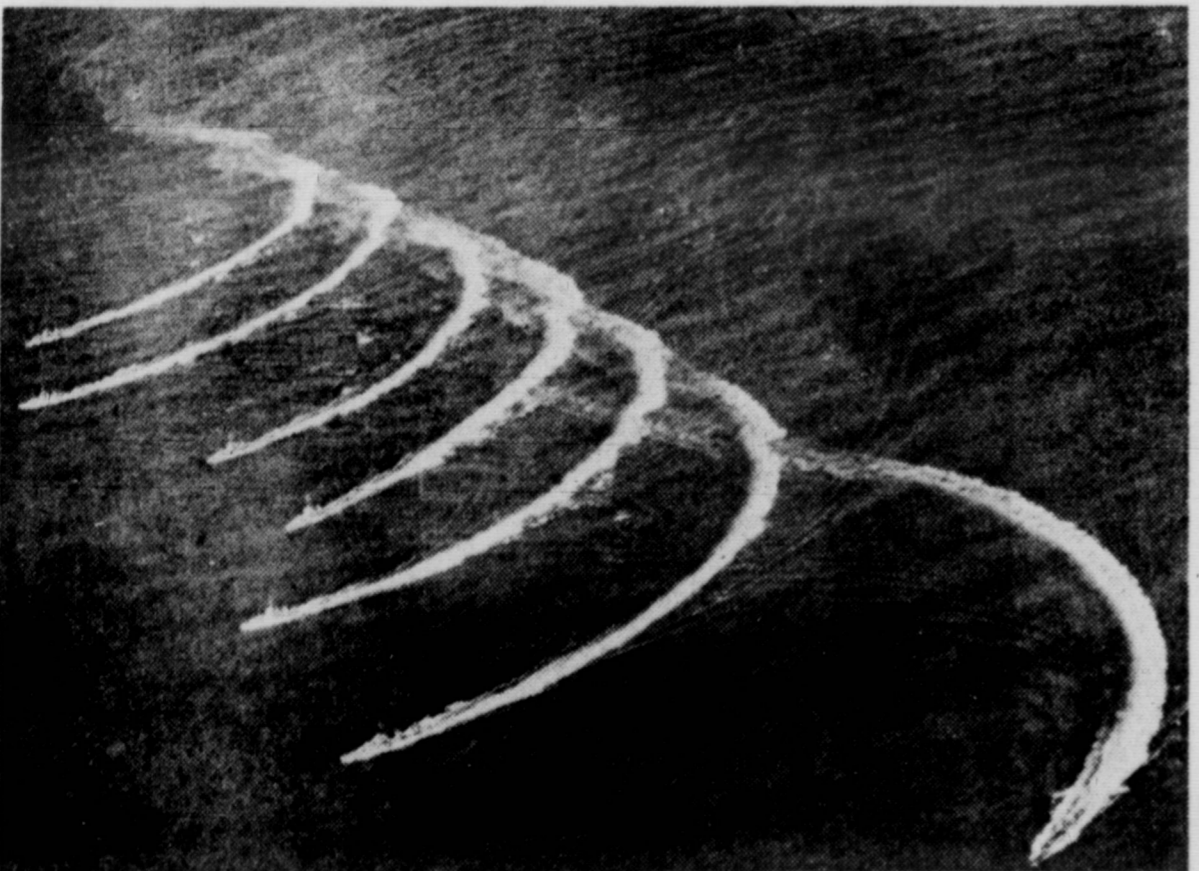
The cruiser, in the foreground, is faster than the battleships that follow her, but the heavy armored battleships can toss ton shells 20

miles at an enemy, and can take the heaviest retaliatory blows with less damage than any other type of fighting ship.



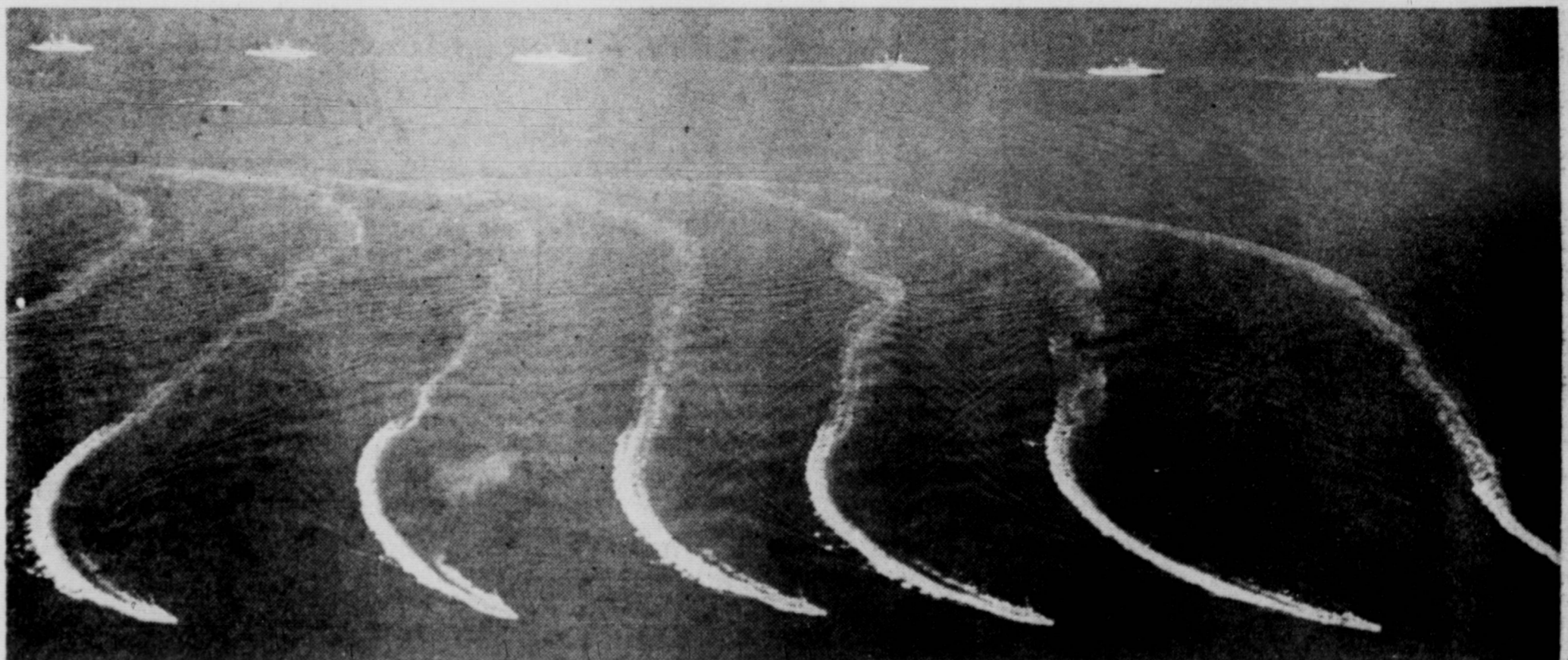
Cruisers and battleship break from line to half starboard, to gain advantage of position in some of the intricate maneuvers re-

quired in successful execution of naval tactics. These positions may be to avoid submarine attack or to obtain better firing positions.



Destroyers "Terriers of the Sea"—destroy enemy submarines, can lay a smoke screen behind which heavier ships

can maneuver invisibly or can launch torpedoes at heavy enemy craft. They protect the heavier craft from submarines.



Destroyers of the inner submarine defense screen swing sharply to starboard and then to port (right and then left to landlubbers) in an

intricate maneuver to ward off submarine attack on the main battleship and cruiser line in the horizon silhouette in the background.

White lines of the wake show their twisting courses in the water. Speed is the forte of the destroyer. A light shell can sink them.