

~~RESTRICTED-ACCOUNTABLE~~

CV 7--

U.S.S. WASP.

AIRCRAFT CARRIER NO. CV 7

BOOKLET OF GENERAL PLANS

TITLE AND NUMBER OF PLATES	
TITLE	PLATE NO.
COVER AND TITLE SHEET.	1
GENERAL DIMENSIONS AND DATA.	2
OUTBOARD PROFILE. STBD SIDE.	3
OUTBOARD PROFILE. PORT SIDE.	4
INBOARD PROFILE. THRU $\frac{1}{2}$ OF SHIP.	5
INBOARD PROFILE. THRU $\frac{1}{2}$ OF ISLAND.	6
ISLAND PLATFORMS AND BRIDGES.	7
FLIGHT DECK.	8
GALLERY DECK.	9
FLY DECK, LOWER ISLAND PLAT. AND POOP DK.	10
MAIN DECK.	11
SECOND DECK.	12
THIRD DECK.	13
FOURTH DECK.	14
FIRST PLATFORM.	15
SECOND PLATFORM.	16
HOLD.	17
INNER BOTTOM.	18

CORRECTED TO SUIT SHIP

PLACE	DATE	APPROVED BY
QUINCY, MASS.	AUG. 8, 1940	<i>W. J. Summers</i>
NORFOLK NAVY YARD	JAN. 3, 1942.	<i>A. C. Bushey</i>
NORFOLK NAVY YARD	SEPT. 23, 1942.	<i>A. C. Bushey</i>

BETHLEHEM STEEL CO. SHIPBUILDING DIV.
FORE RIVER YARD. QUINCY, MASS.
HULL DEPARTMENT

SCALE: $\frac{1}{8}$ " = 1 FOOT DATE _____
 DRAWN AGE UA-92B APPROVED *W. J. Summers*
 TRACED FD UA-132 CHECKED _____

PLAN No 6011-30

GENERAL DIMENSIONS

LENGTH BETWEEN PERPENDICULARS.	689'-11 1/2"
LENGTH OVERALL AT FLIGHT DECK INCLUDING PLAT. AT STERN	741'-4 7/8"
BEAM EXTREME AT LEVEL OF WALKWAYS WITH WALKWAYS FOLDED	111'-10 1/2"
DRAFT CORRESPONDING TO TRIAL DISPLACEMENT.	22'-2"
BASE LINE TO BOTTOM OF KEEL.	0'-1 5/8"

GENERAL DATA.

COMPLEMENT.

SHIP	AVIATION.	MARINES.	TOTAL.
OFFICERS 105	81	3	189
C.P. OFFICERS 68	30	2	100
MEN. 1350	416	73	1839
TOTAL 1523	527	78	2128

BERTHS, LOCKERS ETC.

BEDS (STANDARD.)	3	LOCKERS TYPE "A"	119
PULLMAN BERTHS	15	" " "B"	1133
DOUBLE BERTHS.	65	" " "B ² "	652
SINGLE BERTHS.	46	" " "D"	39
PIPE BERTHS	1716	PEACOCK LOCKERS. STOWAGE FOR 1708 PEACOCKS.	
PIPE BERTHS, C.P.O. TYPE.	105	BUCKET RACKS " " 1740 BUCKETS.	
TOTAL.	1985		

No 2 WATER COOLER	1
" 3 " "	3
" 5 " "	5

NOTE:
FOR EXPLANATION OF ABBREVIATIONS USED ON ALL PLATES SEE COMPT. AND ACCESS PLANS.
(FINISHED PLANS.)

BOATS.

TYPE.	No OF BOATS
50 FT. MOTOR LAUNCH.	2
50 " " (OFFICERS.)	1
40 " BOAT.	1
26 " WHALE BOAT.	2
12 " PUNT.	2
TOTAL	8

FIRE APPARATUS

HOLD.	FIRE PLUGS
BET. FR5. 77-78 PORT	2 ND DECK.
" " 83-84 STB'D	FRAME 24 STB'D
" " 103-104 "	BET. FR5. 67-68 "
" " 108-109 PORT.	" " 72-73 PORT
" " 116-117 STB'D.	" " 89-90 "
	" " 106-107 "
	" " 137-138 "
2 ND PLATFORM.	" " 154-155 STB'D
BET. FR5. 31-32 PORT.	" " 155-156 PORT.
" " 68-69 STB'D	" " 168-169 "
" " 133-134 "	
" " 116-117 PORT.	
DIESEL GEN. ROOM FLAT.	MAIN DECK.
BET. FR5. 75-76 PORT.	BET. FR5. 36 3/8-38 STB'D
	" " 36 3/8-38 PORT.
	" " 69-70 STB'D
1 ST PLATFORM.	" " 73-74 PORT.
BET. FR5. 116-117 STB'D	" " 98-99 STB'D
	" " 105-106 PORT
	" " 136-137 "
4 TH DECK.	" " 137 138 STB'D
	" " 154-155 "
	" " 168-169 PORT
3 RD DECK.	FCL'E DECK.
BET. FR5. 36 3/8-38 PORT	BET. FR5. 12-13 STB'D
" " 77-78 "	" " 12-13 PORT.
" " 100-101 "	
" " 138-139 "	
" " 155-156 "	

HEIGHT OF BRIDGES, ELEVATED PLATFORMS, MASTS & LIGHTS.

	* BRIDGES AND PLATFORMS.	
	ABV. 22'-2" W.L.	ABV. BOT. OF KEEL
HEIGHT OF MACHINE GUN PLATFORM.	122'-0 3/4"	144'-2 3/4"
" " SMOKE STACK TOP.	115'-11 1/2"	138'-1 1/2"
" " SEARCHLIGHT PLATFORM.	104'-6 1/4"	126'-8 1/4"
" " SKY CONTROL PLATFORM.	100'-4"	122'-6"
" " MAIN DECK AT FR. 139	30'-8"	52'-10"
" " STANDARD COMPASS PLATFORM.	89'-8 1/4"	111'-10 1/4"
" " NAVIGATING BRIDGE TOP FORD. AT ABOUT FR. 74	84'-0 3/8"	106'-2 3/8"
" " NAVIGATING BRIDGE TOP AT AFT OF FR. 76	82'-0 3/4"	104'-2 3/4"
" " NAVIGATING BRIDGE. FORD OF FR. 74 1/2	76'-2 3/4"	98'-4 3/4"
" " COMMUNICATION BRIDGE. AT FR. 76	65'-5 3/4"	87'-1 3/4"
" " NAVIGATING BRIDGE. AFT OF FR. 74 1/2	74'-5 3/4"	96'-7 3/4"
" " TOP OF FLIGHT DECK PLANKING AT 1/2 OF SHIP AT FR. 90 BENCH MARK	57'-11 5/8"	80'-1 7/8"
" " GALLERY DECK AT FR. 71	49'-1"	71'-3"

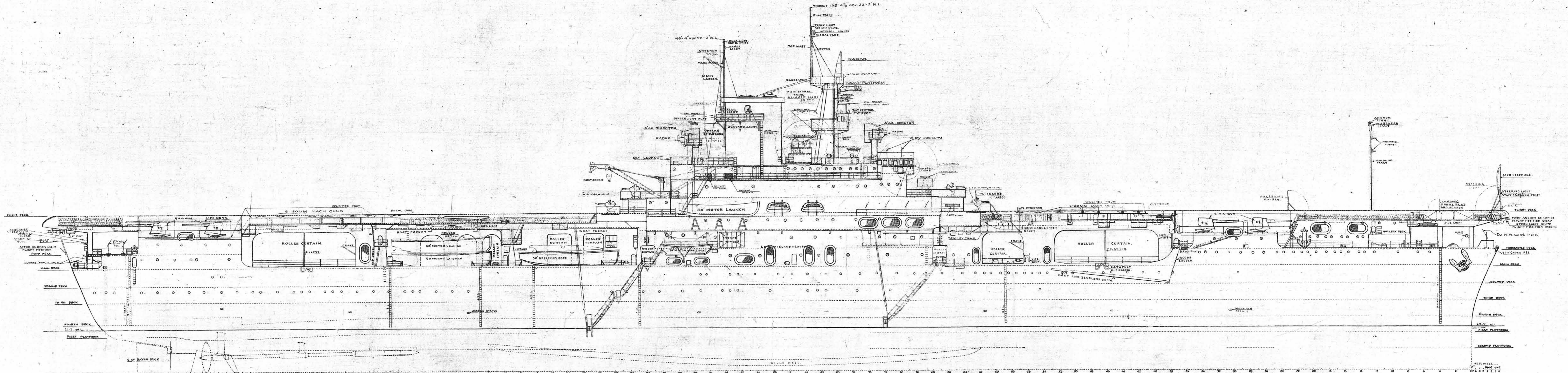
* HEIGHT OF BRIDGES, PLATS, MASTS AND LIGHTS GIVEN ABOVE BOTTOM OF OUTER FLAT KEEL MIDSHIP EXTENDED.

* MASTS AND LIGHTS

	ABV. 22'-2" W.L.	ABV. BOT. OF KEEL
HEIGHT OF STEERING STAFF (TOP OF TRUCK)	69'-8 5/8"	91'-10 3/8"
" " LIGHT.	68'-10"	91'-0"
" " FORD HOUSING MAST, RAISED. (TOP OF LIGHT.)	99'-4"	121'-6"
" " ANCHOR LIGHT. ON HOUSING MAST	99'-1"	121'-3"
" " MASTHEAD LIGHT. ON HOUSING MAST	98'-1"	120'-3"
" " UPPER TOWING LIGHT.	92'-5 1/2"	114'-7 1/2"
" " LOWER	86'-5 1/2"	108'-7 1/2"
" " AFT ANCHOR LIGHT.	39'-1"	61'-3"
" " MIDSHIP MASTHEAD LIGHT. ON MACH. GUN PLATFORM	125'-6 1/4"	147'-8 1/4"
" " TOPMAST RAISED. (TOP OF LIGHT.)	149'-6 7/8"	171'-8 7/8"
" " FORD TRUCK LIGHT. AT BASE. ON FORD TOP MAST. 2 LIGHTS.	148'-3 3/8"	170'-5 3/8"
" " HOUSING FLAG STAFF RAISED. (TOP OF TRIDENT.)	158'-4 7/8"	180'-6 7/8"
" " FORD RANGE LIGHT. (MAIN SIGNAL YARD)	127'-19 1/16"	149'-39 1/16"
" " AFT " (REGULAR POSITION.) ON MAIN MAST	141'-4"	163'-6"
" " " (FLIGHT ") ON MACH. GUN PLAT.	121'-11 3/4"	144'-13 3/4"
" " MAIN MAST, RAISED (TOP OF LIGHT.)	145'-4"	167'-6"
" " TRUCK LIGHT. AT BASE. ON MAIN MAST. 2 LIGHTS.	144'-1 1/4"	166'-3 1/4"
" " AFT MASTHEAD LIGHT. (FLIGHT POSITION.) ON SEARCHLIGHT PLATFORM.	107'-0 3/8"	129'-2 3/8"
" " ANCHOR LIGHT ON ENSIGN STAFF.	84'-0 1/2"	106'-2 1/2"

NOTE: HEIGHTS OF LIGHTS GIVEN TO 1/8" OF LENS, UNLESS OTHERWISE NOTED.

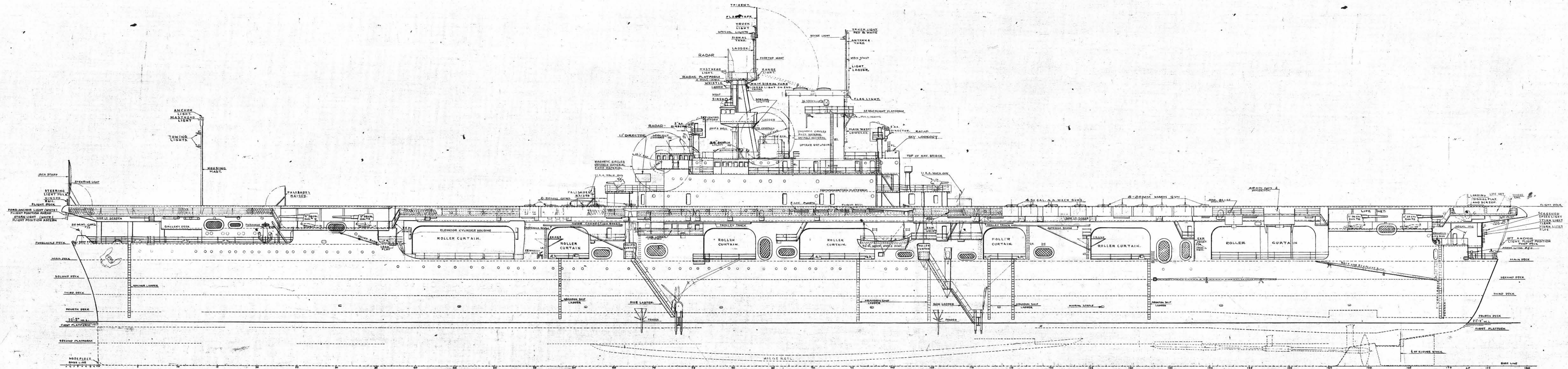
GENERAL INFORMATION
AND DATA
U.S.S. WASP CV7
SCALE: 1/16" = 1 FOOT
BU. C. & R. 300 430 (PART)

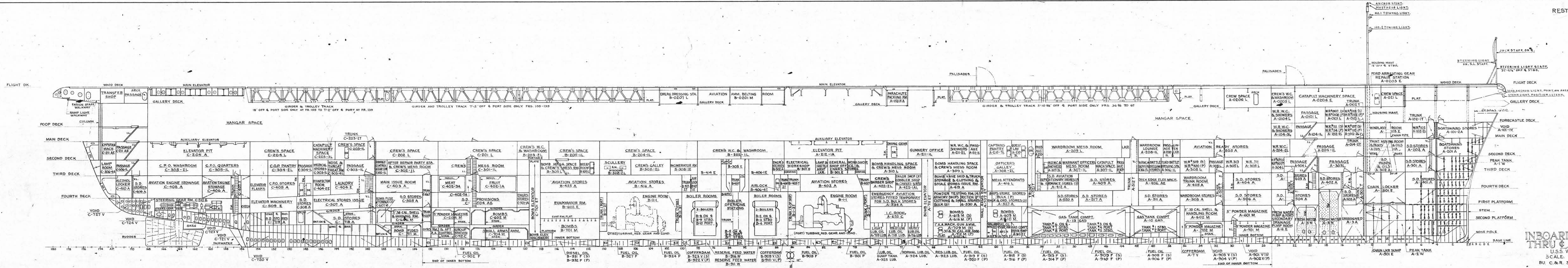


OUTBOARD PROFILE
 STARBOARD SIDE
 U.S.S. WASP CV-7
 SCALE: 1/8" = 1 FOOT
 BU C & R 300430 (PART)

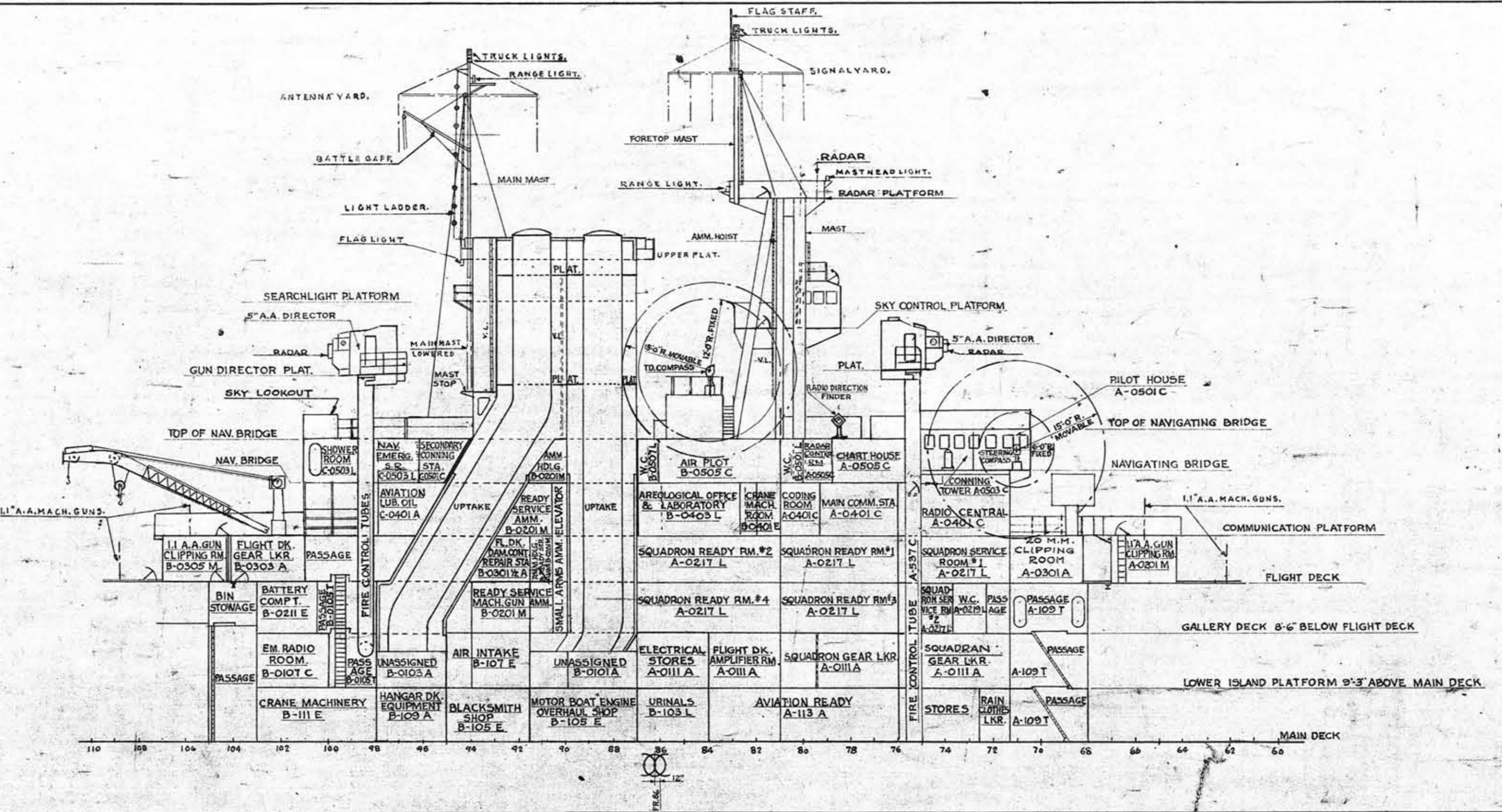
11 June 1957
11/2/57
21/1/1964

SUPERSTRUCTURE ABOVE FLIGHT DECK ON STBD. SIDE ONLY.

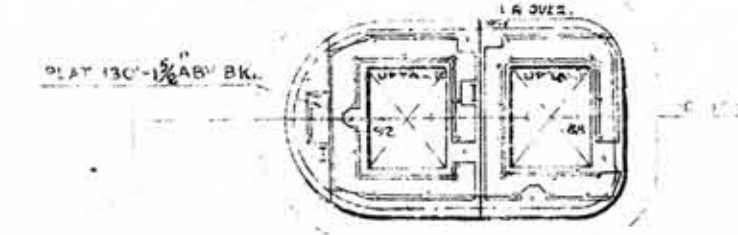




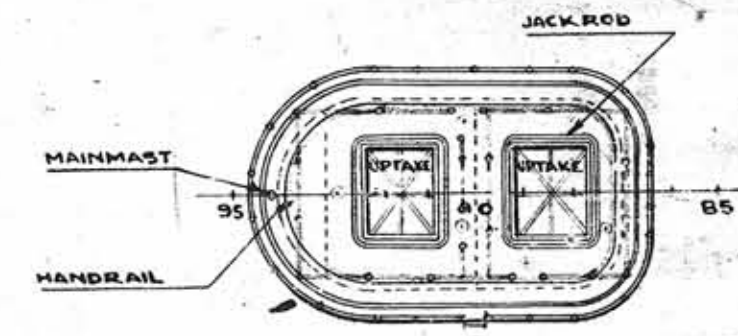
INBOARD PROFILE
THRU & OF SHIP
U.S.S. WASP CV-7
SCALE: 1/16" = 1 FOOT
BU. C. & R. 300 430 (PART)



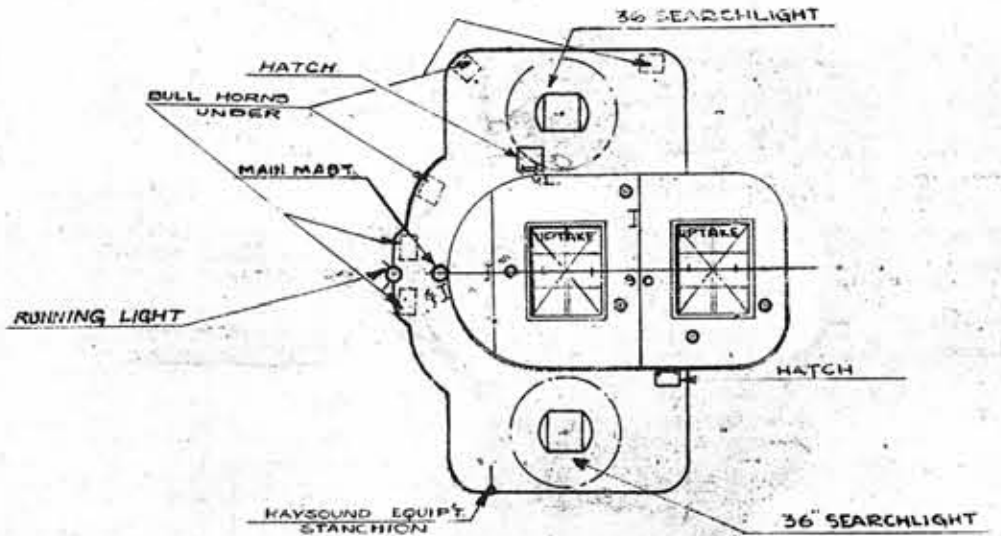
**INBOARD PROFILE
THRU ϵ OF ISLAND
32'-9" OFF ϵ STARBOARD**
U.S.S. Wasp CV7
SCALE: 1/16" = 1 FOOT
BU. C. & R. 300 430 (PART)



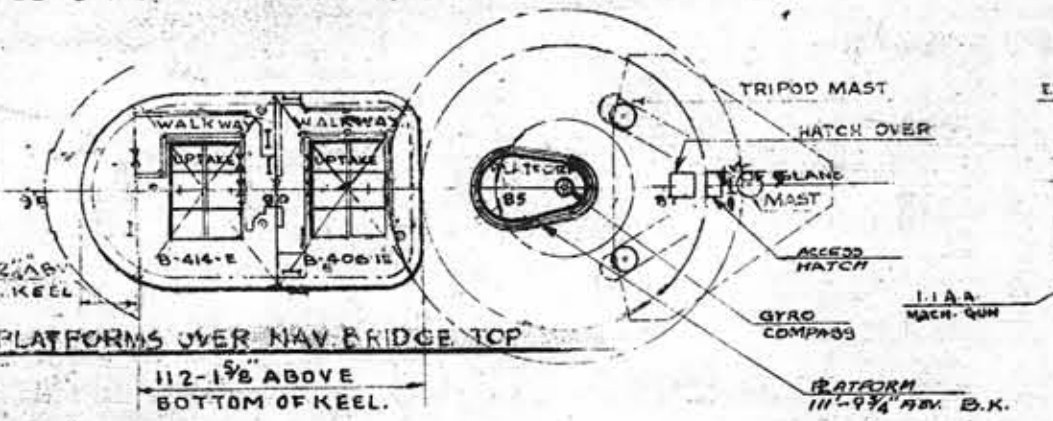
PLATFORMS
131'-1 1/8" ABOVE BOTTOM OF KEEL.



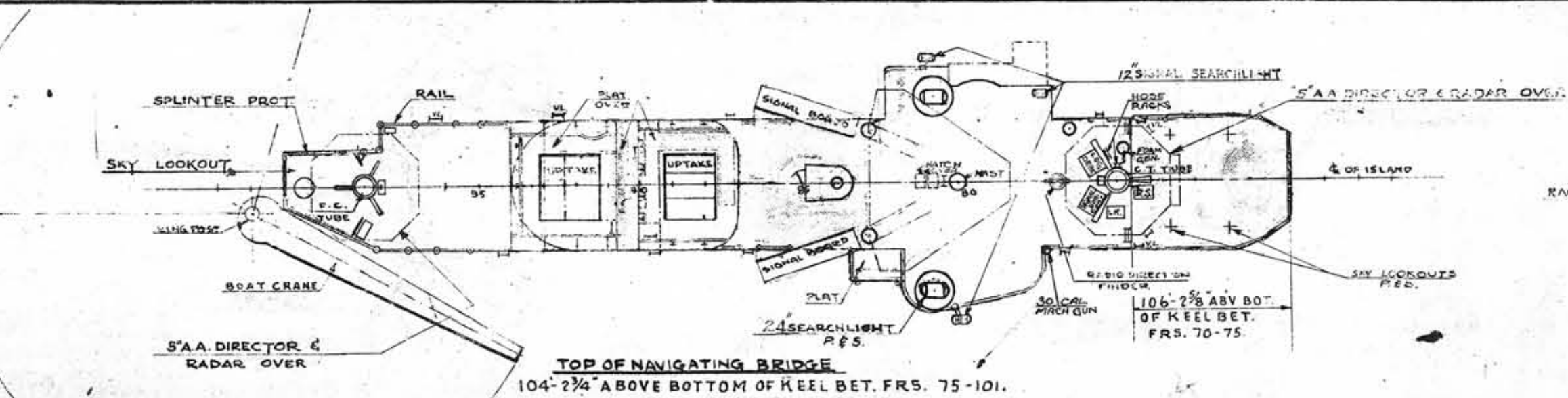
TOP OF UPTAKE ENCLOSURE
138'-1 1/2" ABOVE BOTTOM OF KEEL.



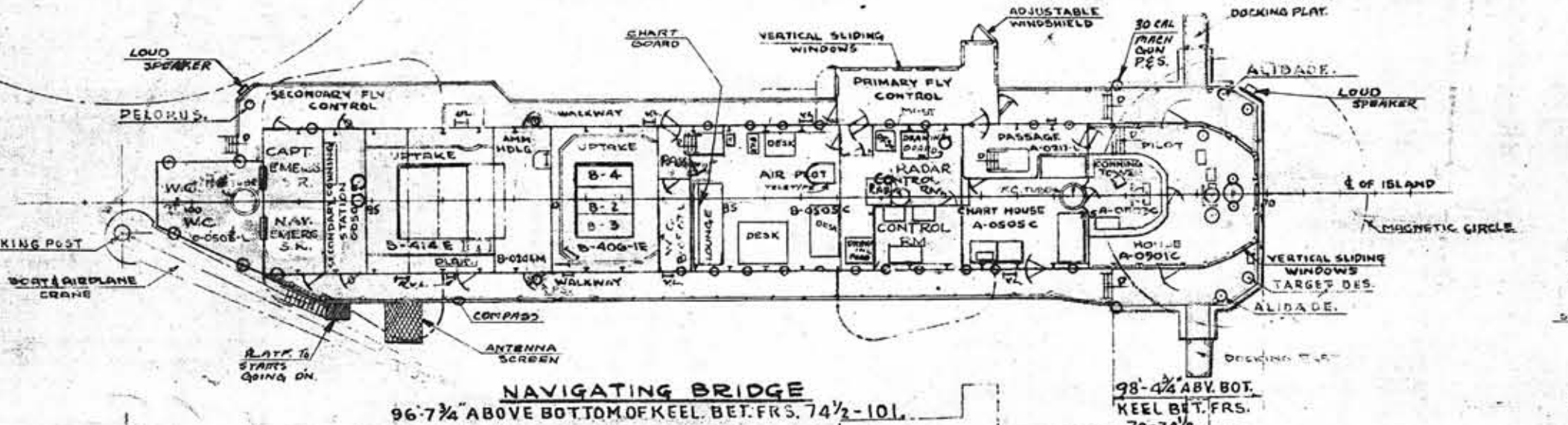
24 & 30 SEARCHLIGHT PLATFORM
126'-8 1/4" ABOVE BOTTOM OF KEEL.



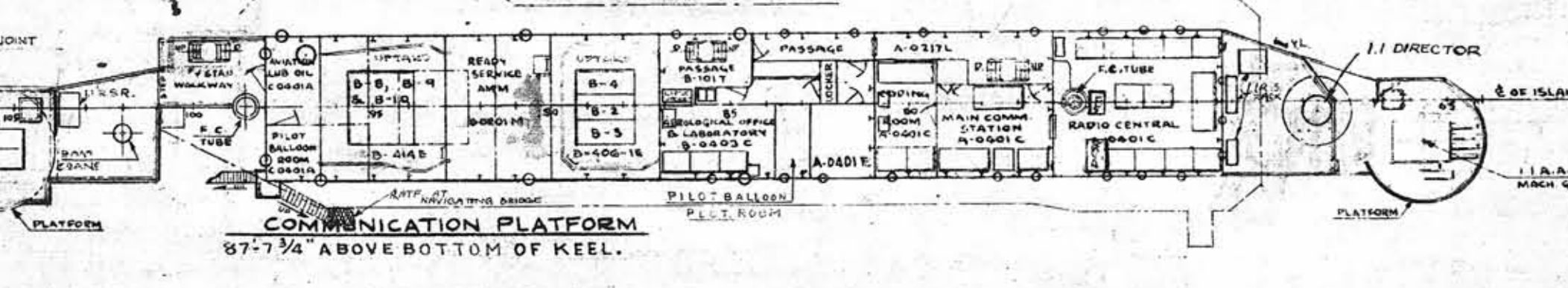
PLATFORMS OVER NAV. BRIDGE TOP
112'-1 1/8" ABOVE BOTTOM OF KEEL.



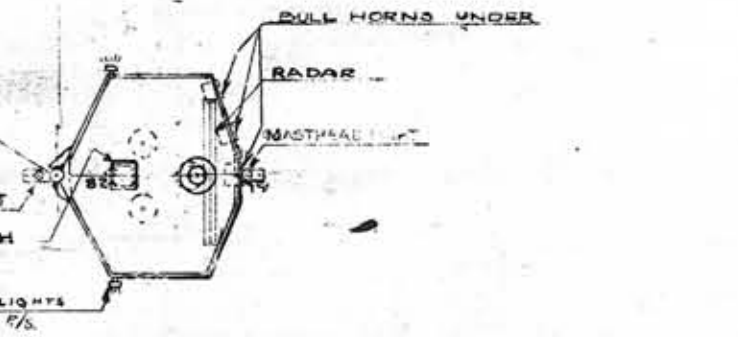
TOP OF NAVIGATING BRIDGE
104'-2 3/4" ABOVE BOTTOM OF KEEL BET. FR. 75-101.



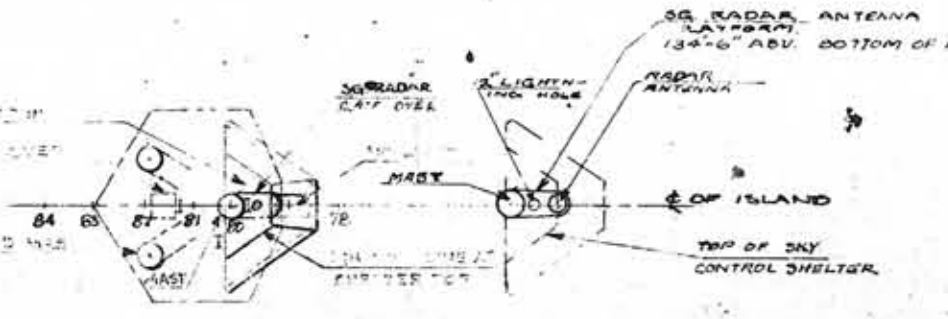
NAVIGATING BRIDGE
96'-7 1/2" ABOVE BOTTOM OF KEEL BET. FR. 74 1/2-101.



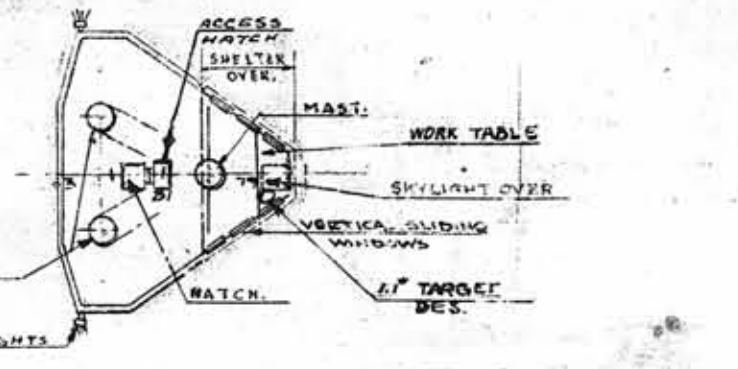
COMMUNICATION PLATFORM
87'-7 3/4" ABOVE BOTTOM OF KEEL.



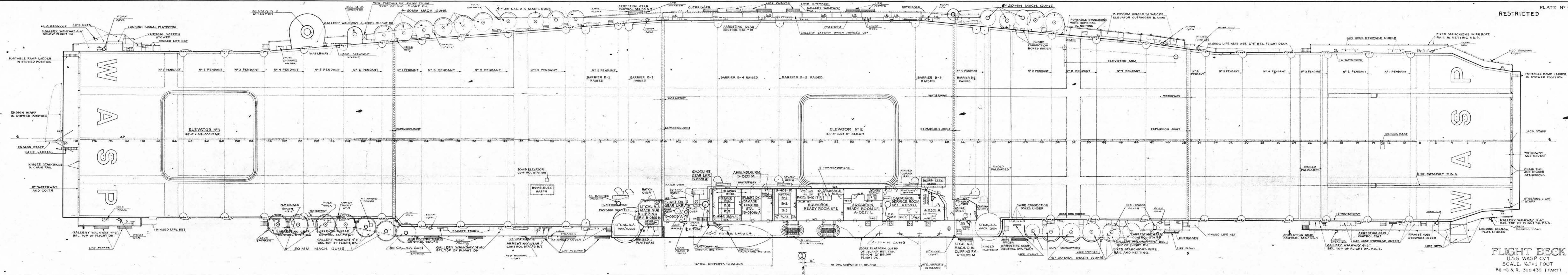
RADAR PLATFORM
144'-2 3/4" ABOVE BOTTOM OF KEEL.



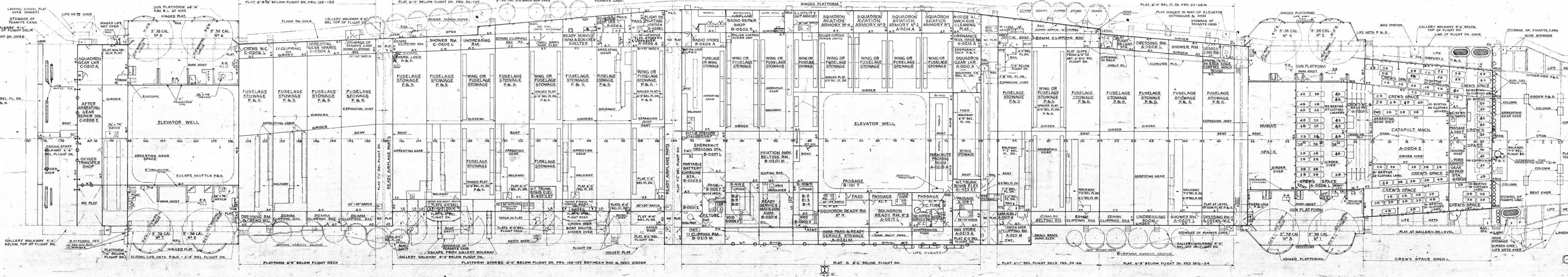
TOP OF SKY CONTROL SHELTER
130'-6" ABOVE BOTTOM OF KEEL.



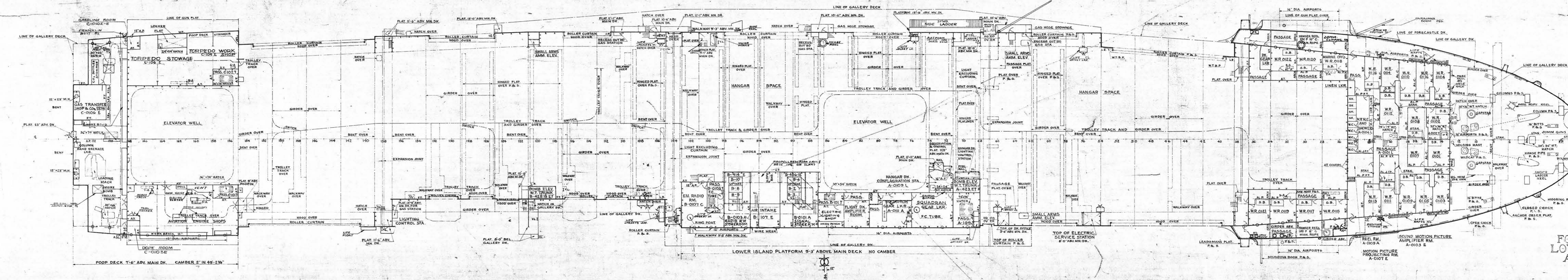
SKY CONTROL PLATFORM
122'-6" ABOVE BOTTOM OF KEEL.



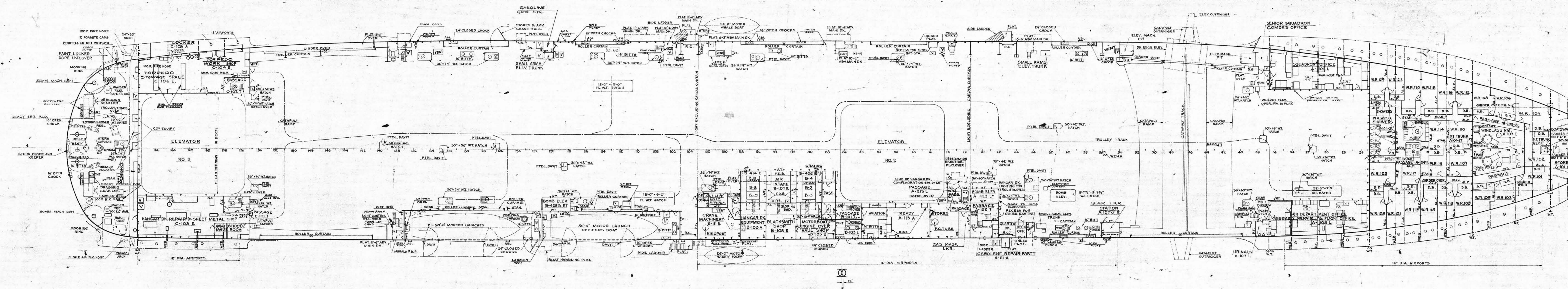
FLIGHT DECK
 U.S.S. WASP CV7
 SCALE: 1/16" = 1 FOOT
 BU-C & R. 300 430 (PART)



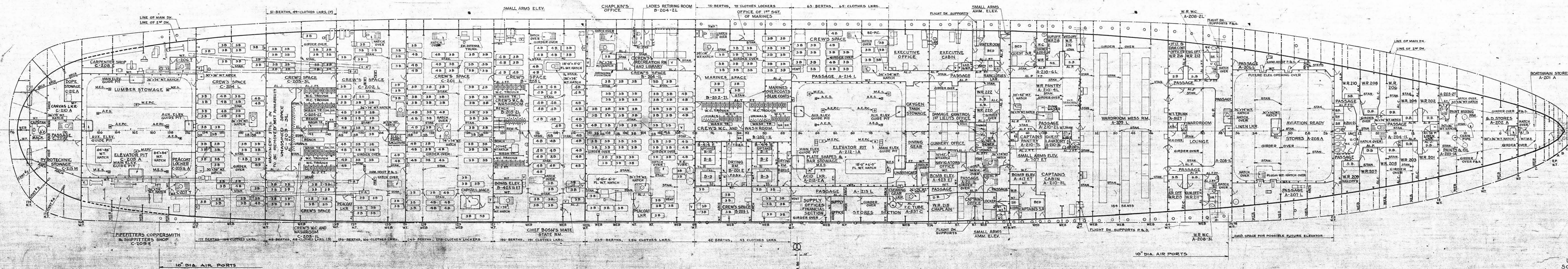
GALLERY DECK
 U.S.S. WASP CV7
 SCALE: 1/4" = 1 FOOT
 BU. C. & R. 300-430 (PART)



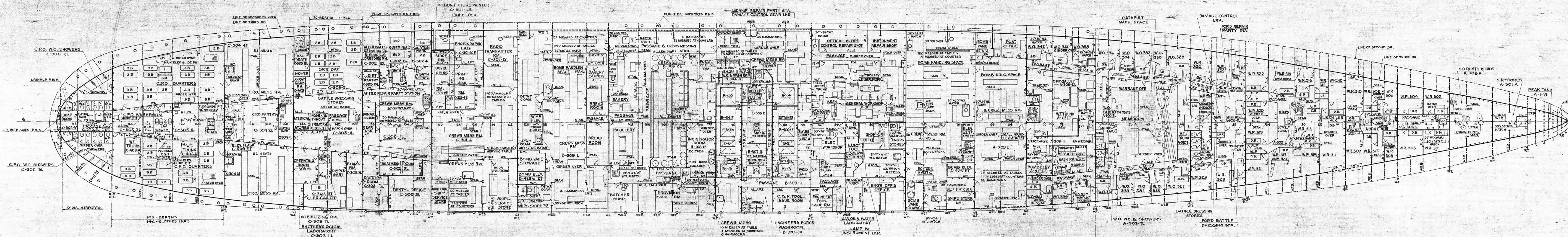
**FORECASTLE DECK
LOWER ISLAND PLAT
AND-POOP DECK**
U.S.S. WSP CV 7
SCALE: 1/16" = 1 FOOT
BU. C. & R. 300 430 (PART)



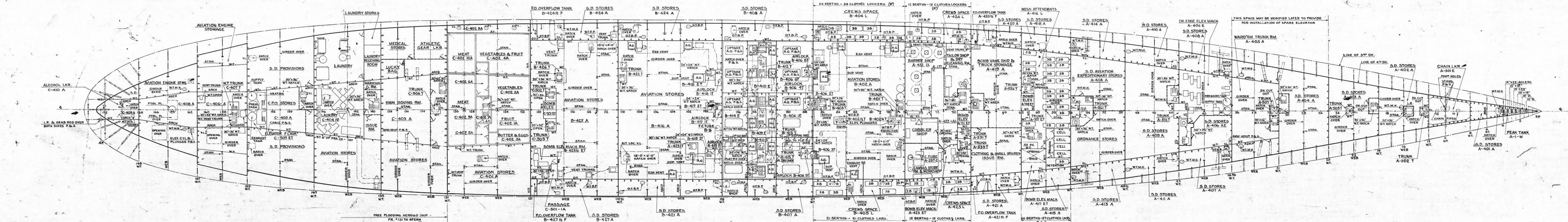
MAIN DECK
 U.S.S. WASP CV7
 SCALE: 1/16" = 1 FOOT
 BU. C & R 300430 (PART)

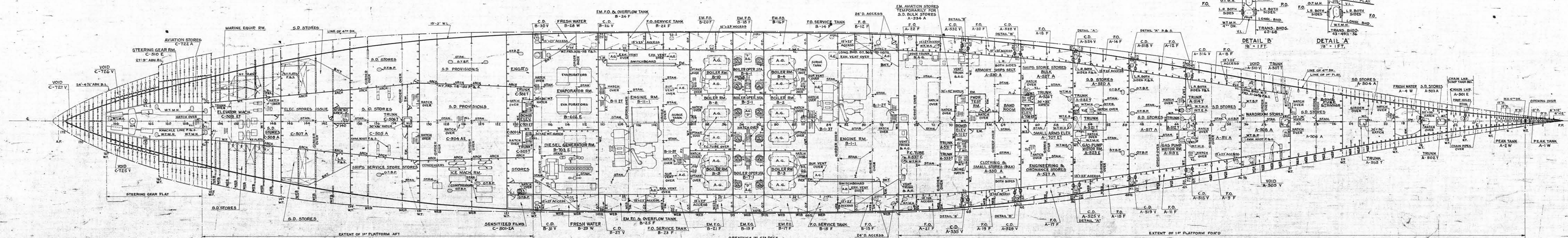


2ND DECK
 U.S.S. WASP CV7
 SCALE: 1/16" = 1 FOOT
 BU. C & R. 300430 (PART)



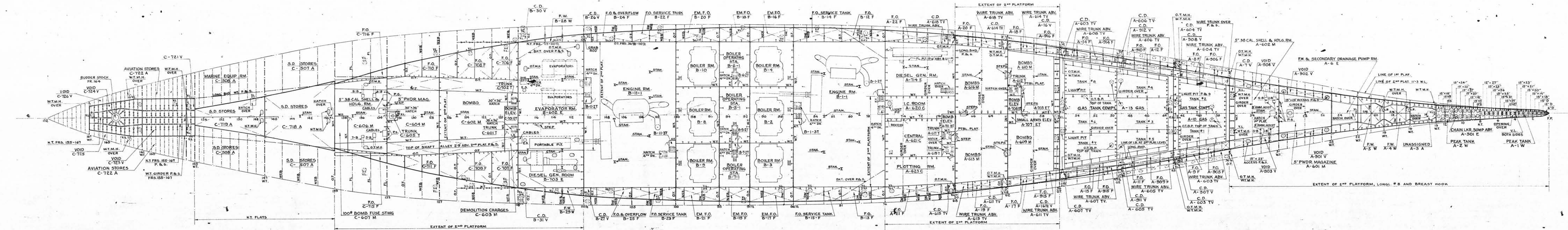
3RD DECK
 U.S.S. WASP CVT
 SCALE: 1/8" = 1 FOOT
 BU. C & R 300-430 (PART)



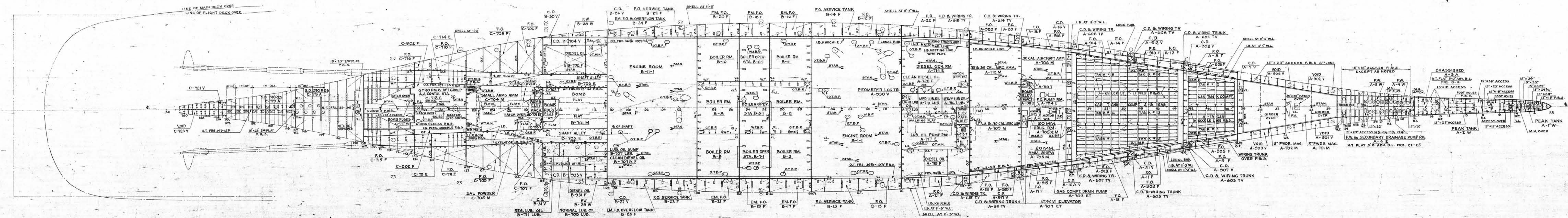


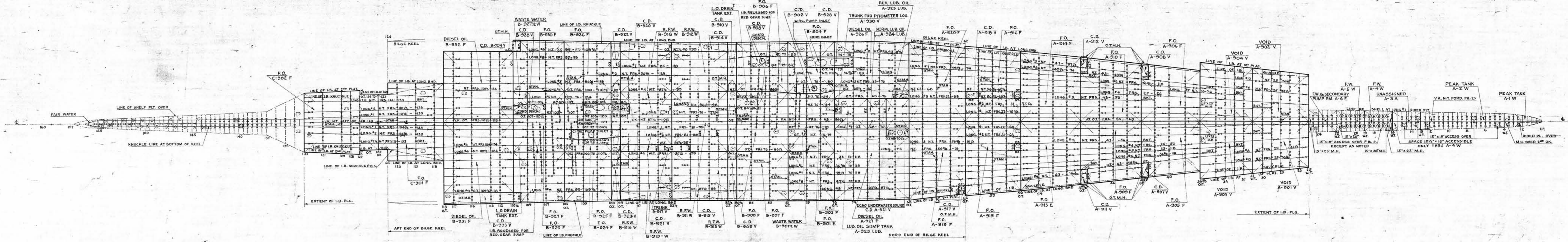
OPENINGS IN 4TH DECK
 BET. FRG. 91 1/2 - 95.
 "C" AIR INTAKE OPENING.
 "D" SUPPLY AND EXHAUST OPENING.
 AG ARMOR GRATING.

1ST PLATFORM
 U.S.S. WASP CV7
 SCALE: 1/16" & 1/8" = 1 FT.
 BU. C & R 300430 (PART)



2ND PLATFORM
 U.S.S. WASP CV7
 SCALE: 1/8" = 1 FOOT
 BU. C & R 300430 (PART)





NOTE: NO DOCKING KEELS FITTED.