

PRINCIPAL DATA

LENGTH (OWL)	1000 FT
BEAM (OWL)	135 FT
DRAFT (OWL)	34.5 FT
DISPLACEMENT	60,000 TONS APPROX
TRIAL	71,000 "
FULL LOAD	75,000 "
TRIAL SPEED	35 KNOTS
HP	300,000
ARMAMENT	16 5"/50 TURRETS 10 3"/50 TURRETS 11 4" AA & BATTERY
PLANES	12 APR-1, 74 LFP-1 OR 12 APR-1, 54 LFP-1

NOT LISTED BY AREA

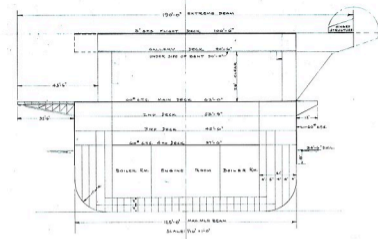
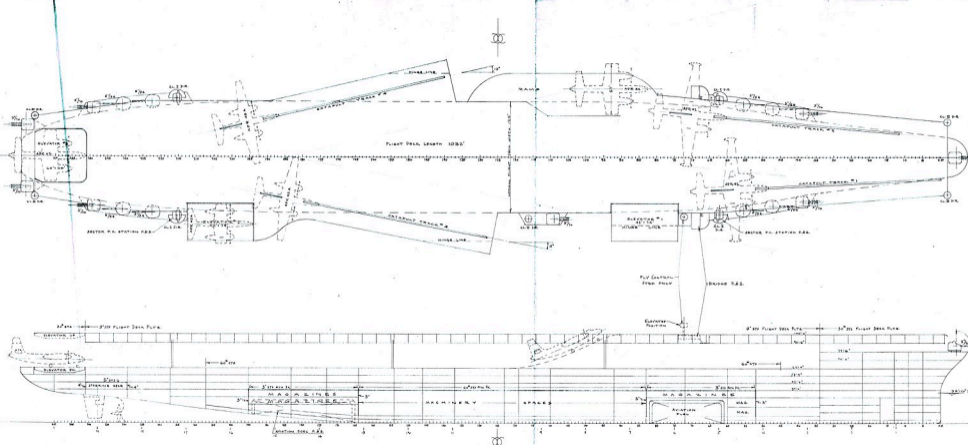
CONFIDENTIAL

CV-NEW
STUDY NO. 1
ARRANGEMENT PLAN

SCALE 1/4" = 1'-0"
NAVY DEPARTMENT
BUREAU OF SHIPBUILDING DIVISION
PRELIMINARY DESIGN SECTION
WASHINGTON, D.C. JULY 1947

REVISED BY: [Signature]
DATE: [Date]

PD-1422



PRINCIPAL DATA

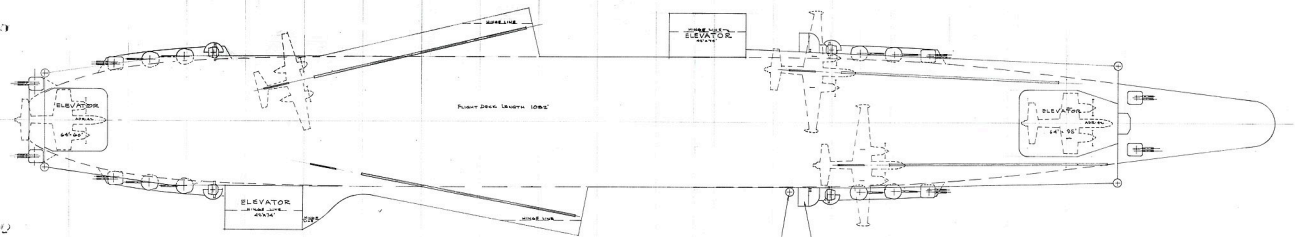
LENGTH ON DECK	1000 FT
BEAM, MAX AHD	118 FT
DEAPT, DESIGNED	345 FT
DISPLACEMENT, STD	65200 TONS
" " " " FULL LOAD	73000 TONS
" " " " " "	11000 TONS
" " " " " "	30000
SHP	85 KTS
SPEED, TRIAL	8-5/16 IN. DIA.
AREA, DECK 1	8-7/16 IN. DIA.
" " " " " "	4-CL 3 DIRECTORS
" " " " " "	5-CL 3 DIRECTORS
" " " " " "	10-10 IN. TUBES (40 IN. DIA.)
AIRCRAFT	27 AIRCRAFT OR 18 ADM-4C
" " " " " "	OR 17511

CONFIDENTIAL

CV-NEW
STUDY NO. 2
ARRANGEMENT PLAN
 SCALE 1/4" = 1'-0"
 NAVY DEPARTMENT
 SHIPS-DEPARTMENT DIVISION
 NAVAL ARCHITECTURE SECTION
 WASHINGTON, D.C. 18 SEPT. 1943

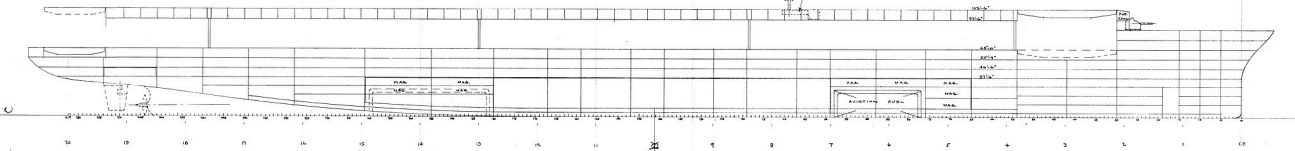
DEVELOPED BY: ZIMMER
 CHIEF NAVAL ARCHITECT

PD-1434



PRINCIPAL DATA

LENGTH, ON DIAL	1130 FT.
BEAM, MAX. MID	118 FT.
DRAUGHT, DESIGNED	34.5 FT.
DISPLACEMENT, STD.	69000 TONS
DISPLACEMENT, TRIAL	78500 TONS
DISPLACEMENT, FULL LOAD	89500 TONS
SHIP SPEED, TRIAL	24,000 HP
	33 KNOTS



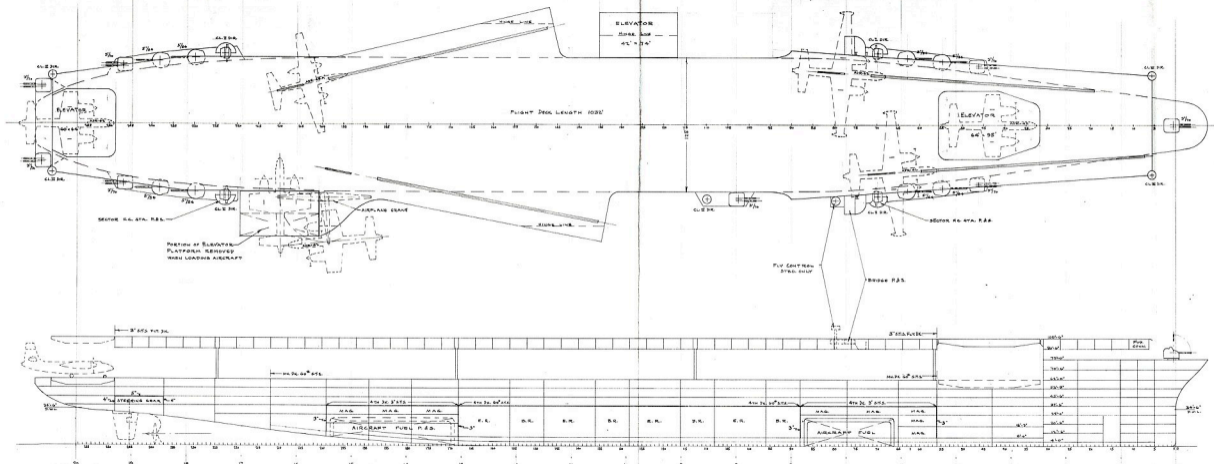
CONFIDENTIAL

CV-NEW
STUDY NO. 3
ARRANGEMENT PLAN

SCALE: 1/2" = 10'
NAVY DEPARTMENT
BUSHIPS - SHIPS DIVISION
PRELIMINARY DESIGN SECTION
WASHINGTON, D.C. 2 OCT 1947

DEVELOPED BY: JAV/ERS
JAV/ERS

PD-1443



PRINCIPAL DATA

LENGTH, OR P.W.L.	1030 FT.
BEAM, MAX. W.D.	128 FT.
DRAFT, DESIGNED	24.5 FT.
DISPLACEMENT, STD.	63200 TONS
" " TRIAL	74000 TONS
" " FULL LOAD	18700 TONS
SHP	160000
SPEED, TRIAL	33 KTS.

CONFIDENTIAL

CV
 SBP PROJECT 6A
 ARRANGEMENT STUDY No. 4
 SCALE: 1/8" = 1'-0"
 NAVY DEPARTMENT
 BUSHIPS - SHIPS DIVISION
 PRELIMINARY DESIGN SECTION
 WASHINGTON, D.C. 10 OCT. 1947

DEVELOPED BY: DANCKER
 CHIEF NAVAL ARCHITECT
 PD-1446

