

CONFIDENTIAL

HULL DIMENSIONS

* LENGTH, BETWEEN PERPENDICULARS	664'-0"
* LENGTH, OVERALL	674'-9 1/2"
* BREADTH, EXTREME	69'-11 1/4"
* DRAFT, ABOVE BOTTOM OF KEEL (DWL)	22'-0"
* DRAFT, ABOVE LOWEST PROJECTION BELOW KEEL (DWL) SONAR DOME	28'-8 1/4"
* KEEL THICKNESS	0'-2"
* FRAME SPACING	4'-0"

HEIGHTS ABOVE (DWL) 22'-0" ABV MBL

* TOP OF STUBMAST (MCJR ANT)	195'-0"
* TOP OF AS-514/URD-4 ANT ON TOP OF FOREMAST (IN RAISED POSITION)	192'-10"
* Q OF FWD ANCHOR LIGHT	52'-10"
* Q OF AFT ANCHOR LIGHT	37'-7"
* Q OF STEERING LIGHT ABT	50'-7 5/8"
* Q OF SIDE LIGHTS P/S	82'-4 7/8"
* Q OF MASTHEAD LIGHT	96'-1 7/8"
* Q OF RANGE LIGHT	117'-5 7/8"
* Q OF BLINKER LIGHT P/S	125'-9 5/8"
* Q OF TOWING LIGHTS	UPPER 123'-5 7/8" LOWER 111'-5 7/8"
* Q OF AIRCRAFT WARNING LIGHTS P/S FR 96 1/4	125'-4 1/4"
* Q OF MANOVERBOARD AND BREAKDOWN LIGHTS (TASK LIGHTS) UPPER 186'-9" MIDDLE 180'-9" LOWER 174'-9"	
* Q OF SPEED LIGHTS & AIRCRAFT WARNING LIGHTS P/S FR 78 1/2	SPEED 164'-8" AIRCRAFT 163'-10"
* Q OF STERN LIGHTS	BLUE (S) 20'-5/8" WHITE (P) 22'-7 1/2"
* Q OF WAKE LIGHT	25'-10"

* MEASURED DIMENSIONS

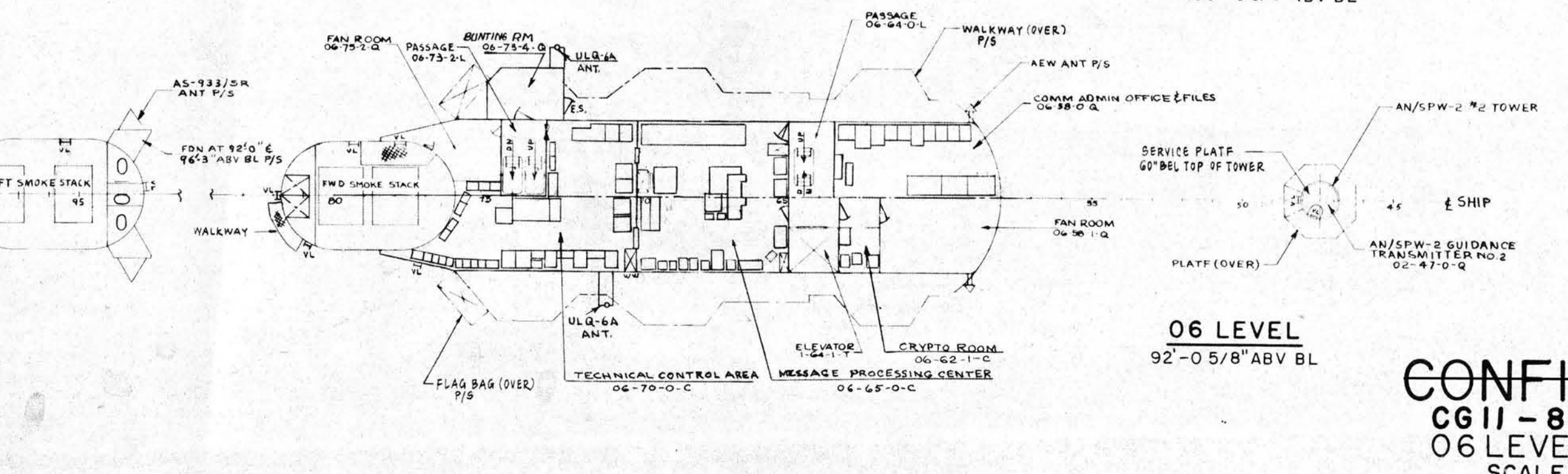
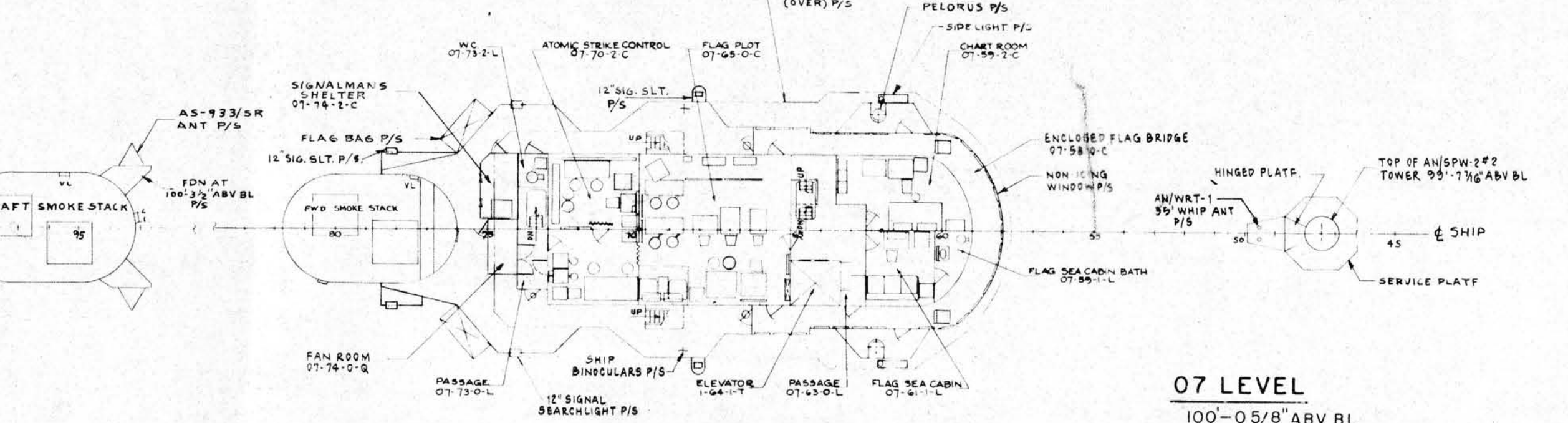
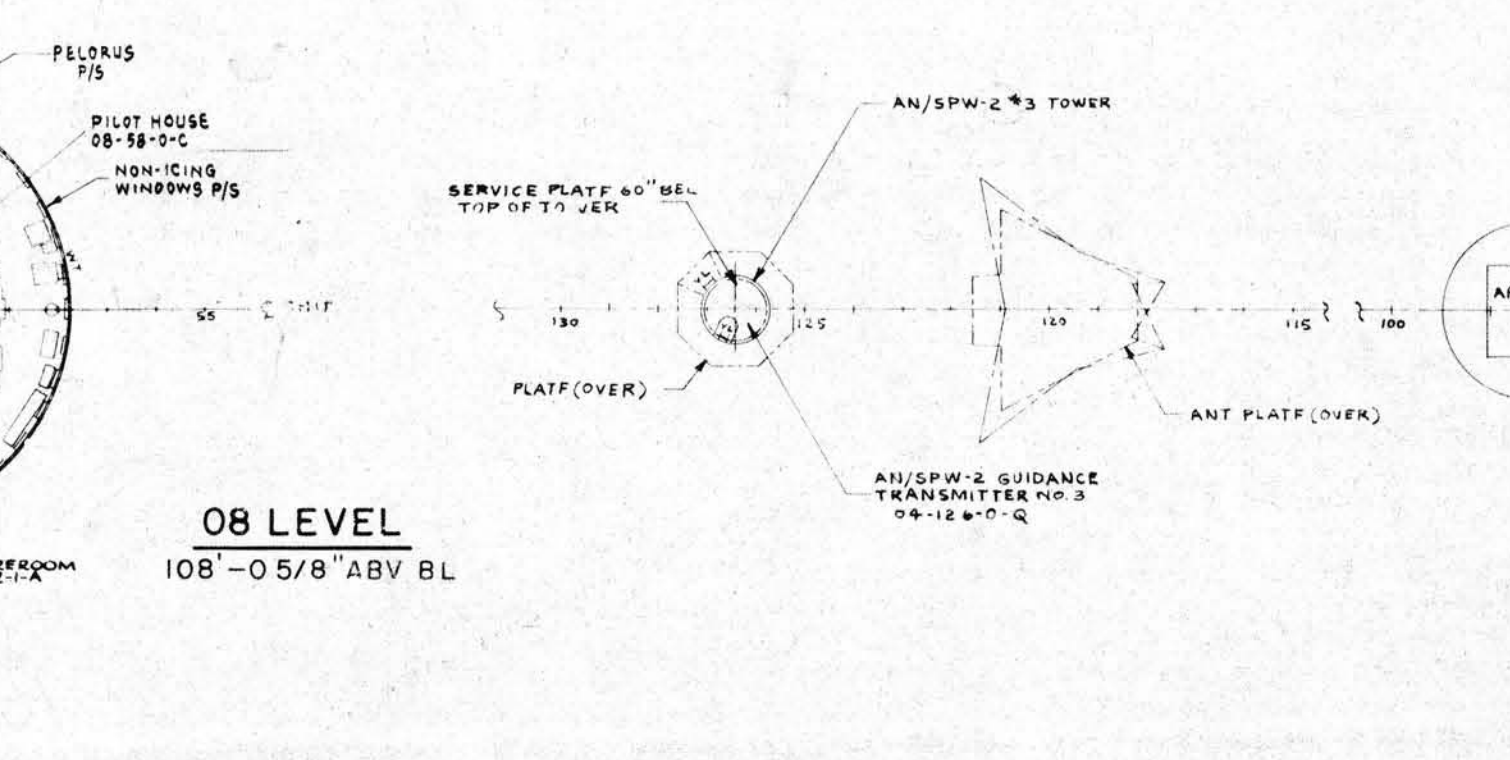
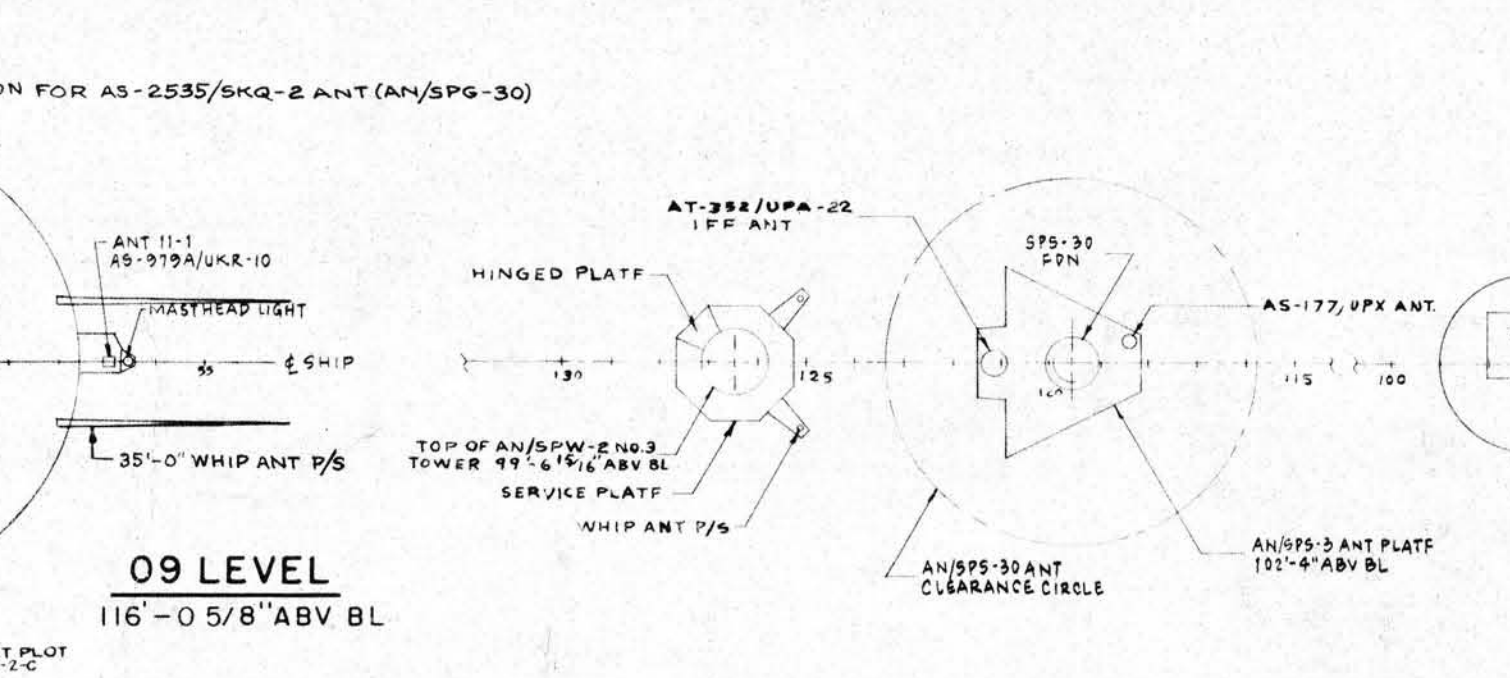
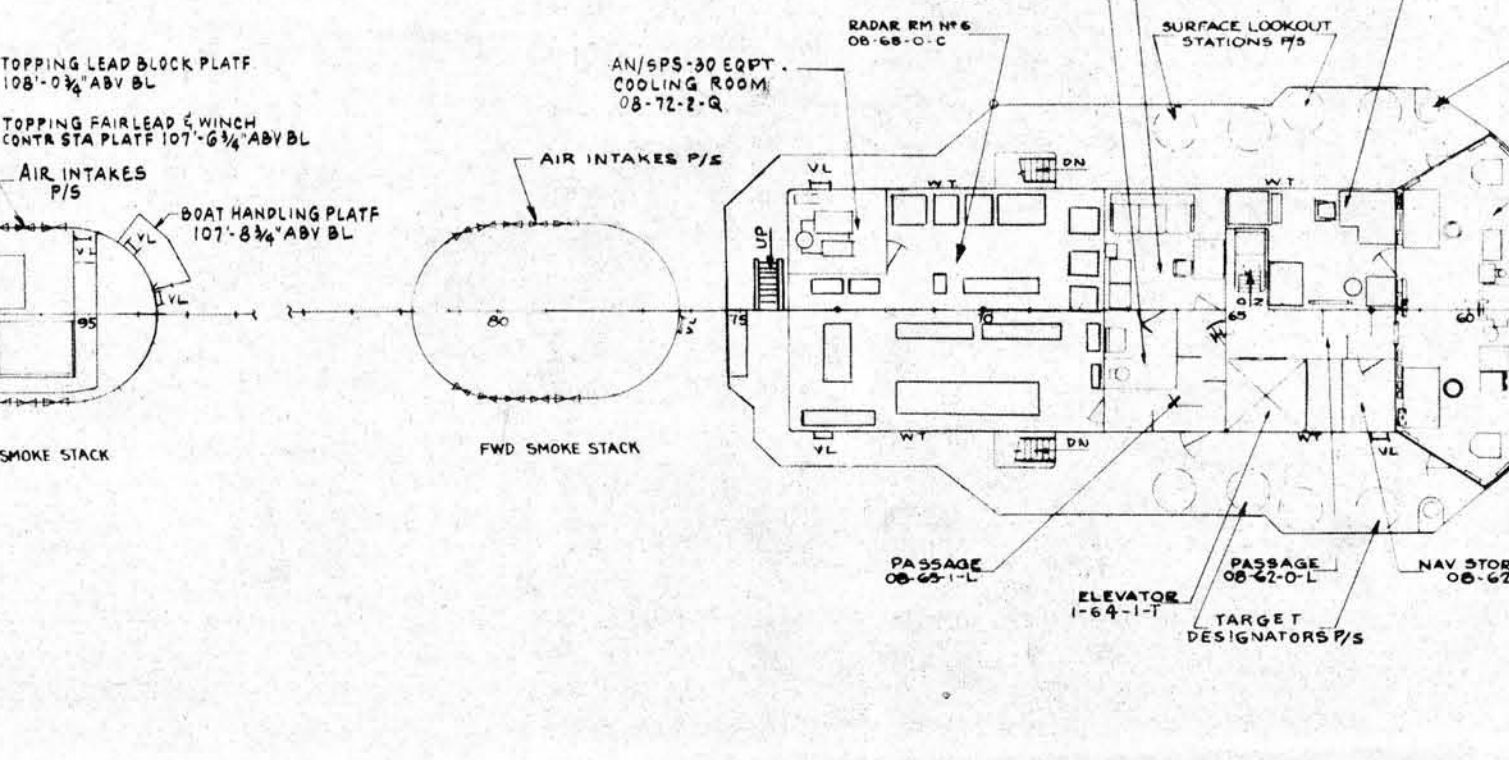
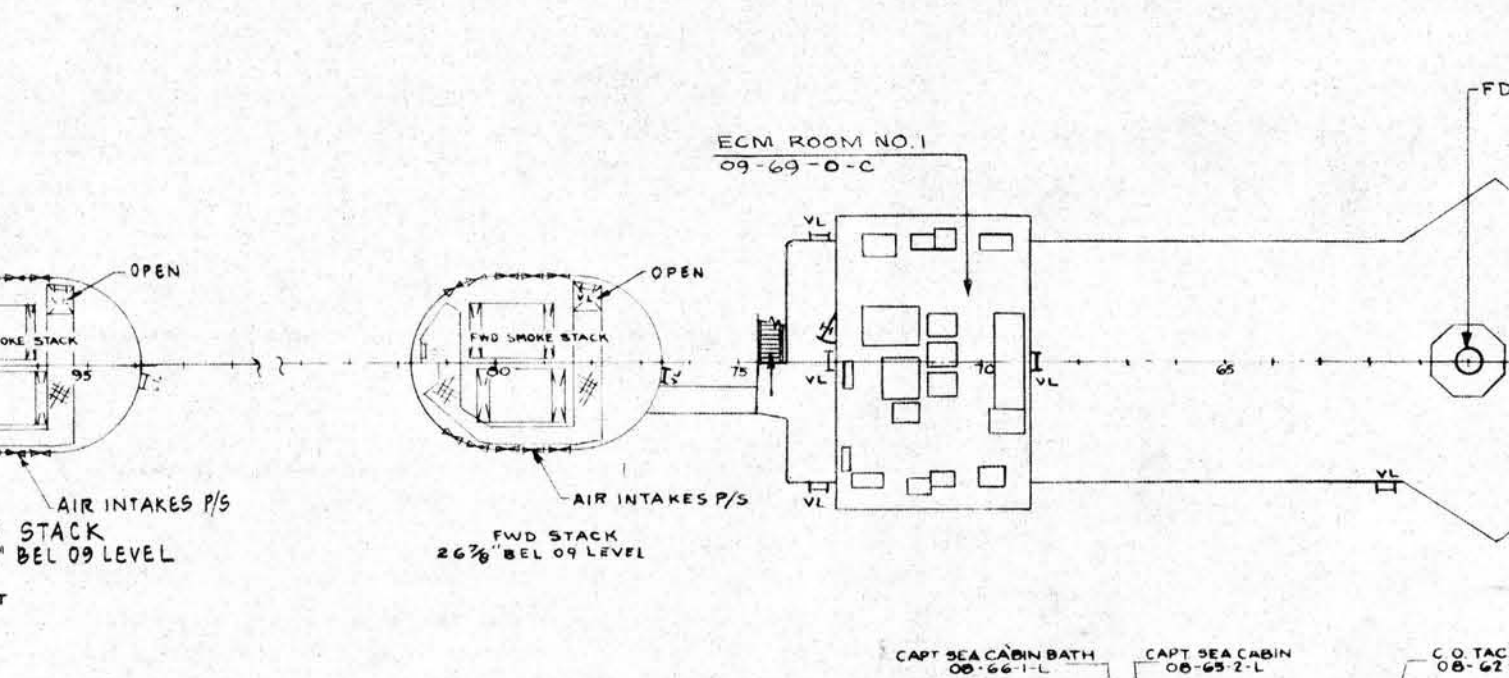
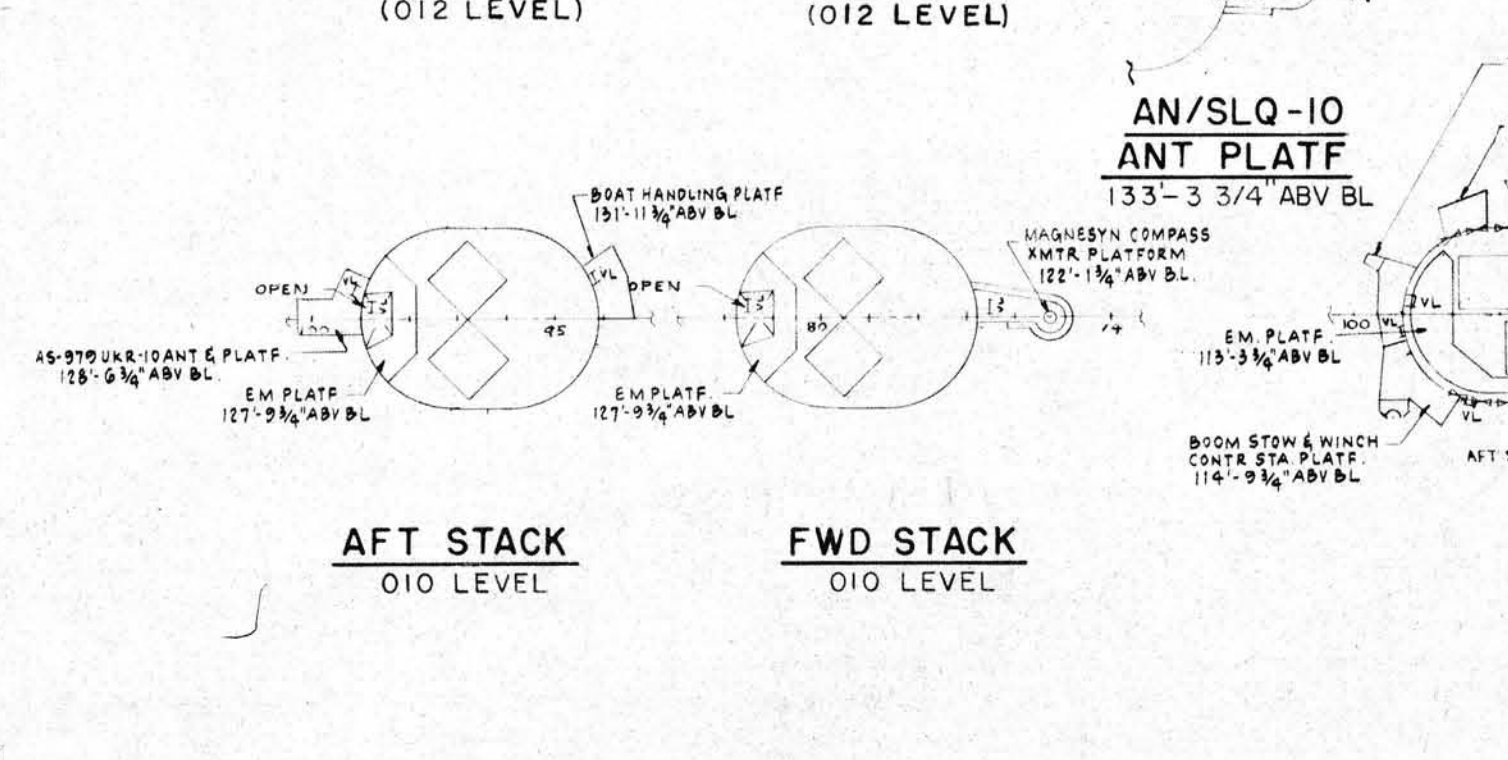
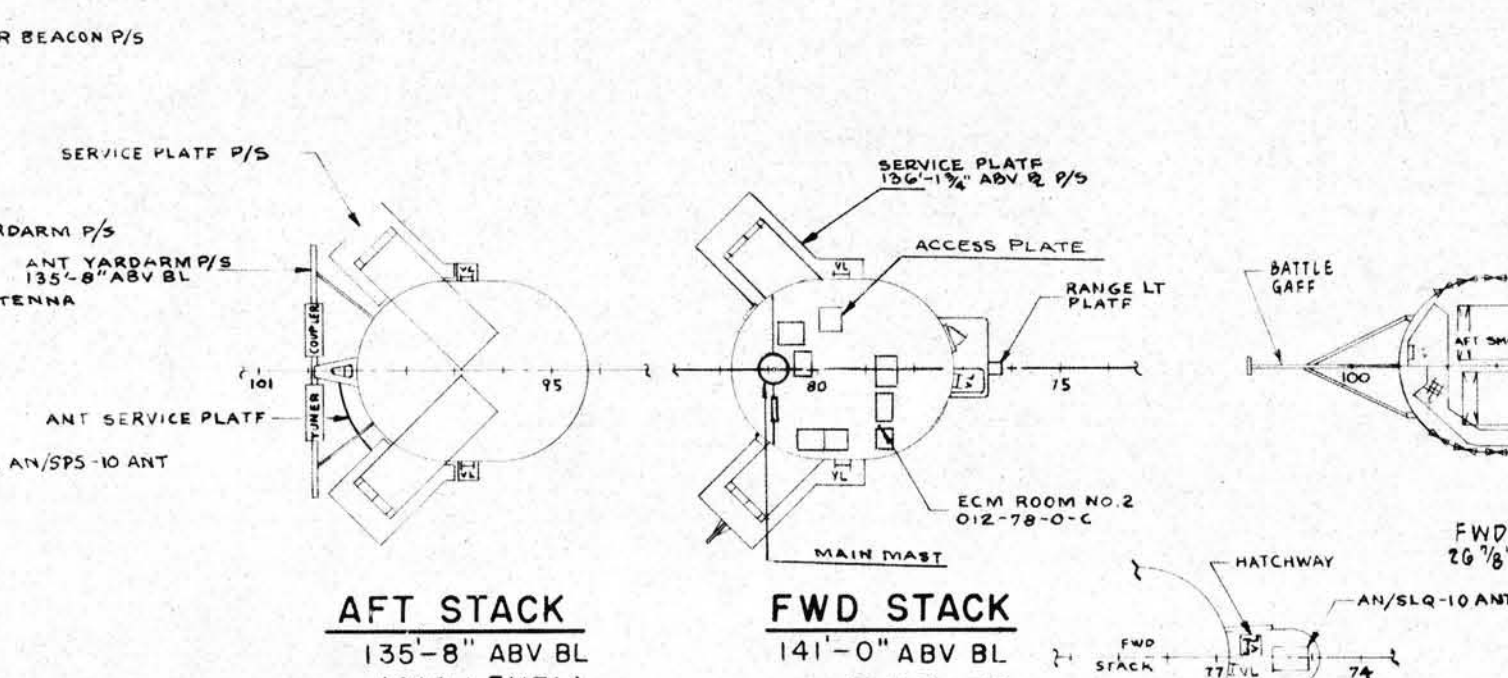
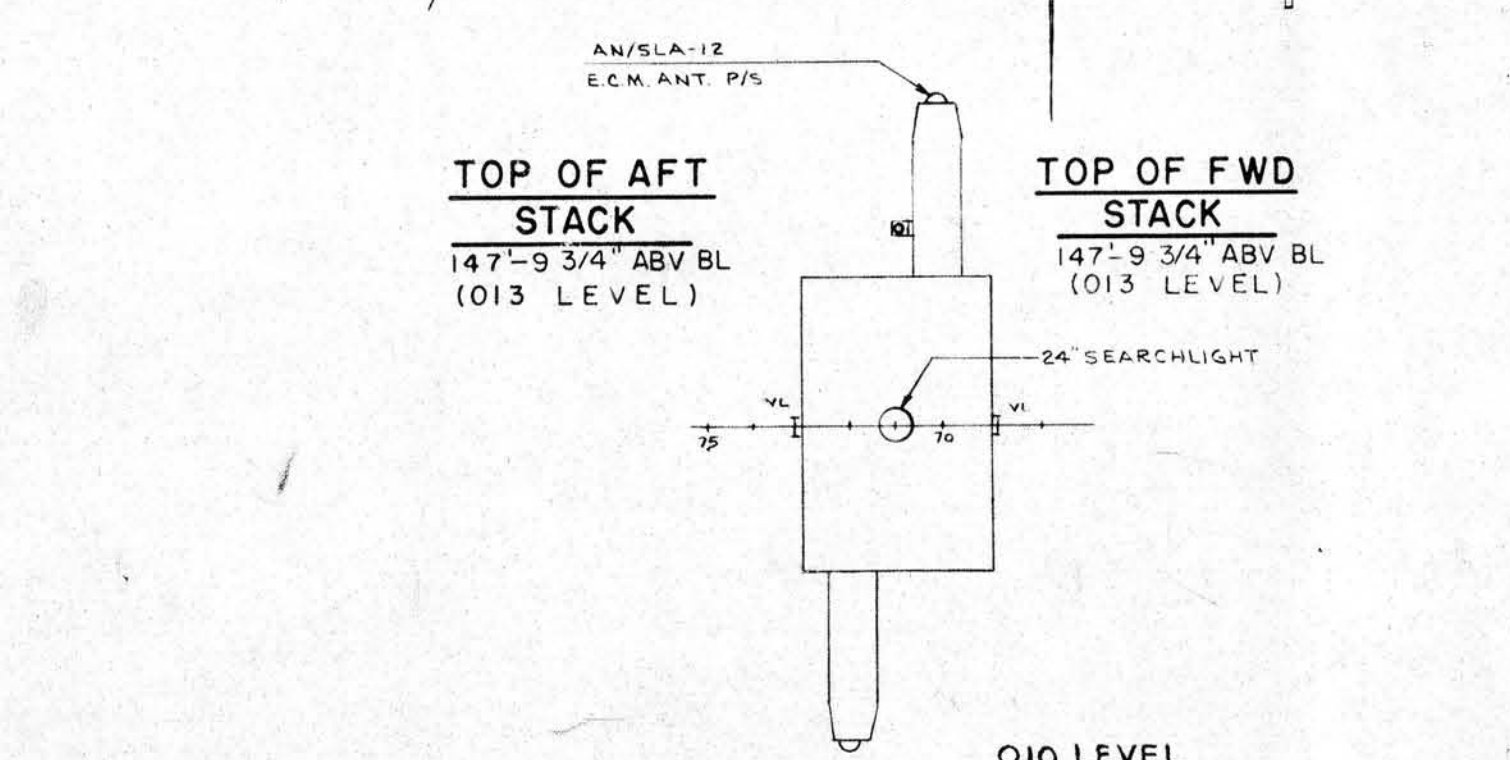
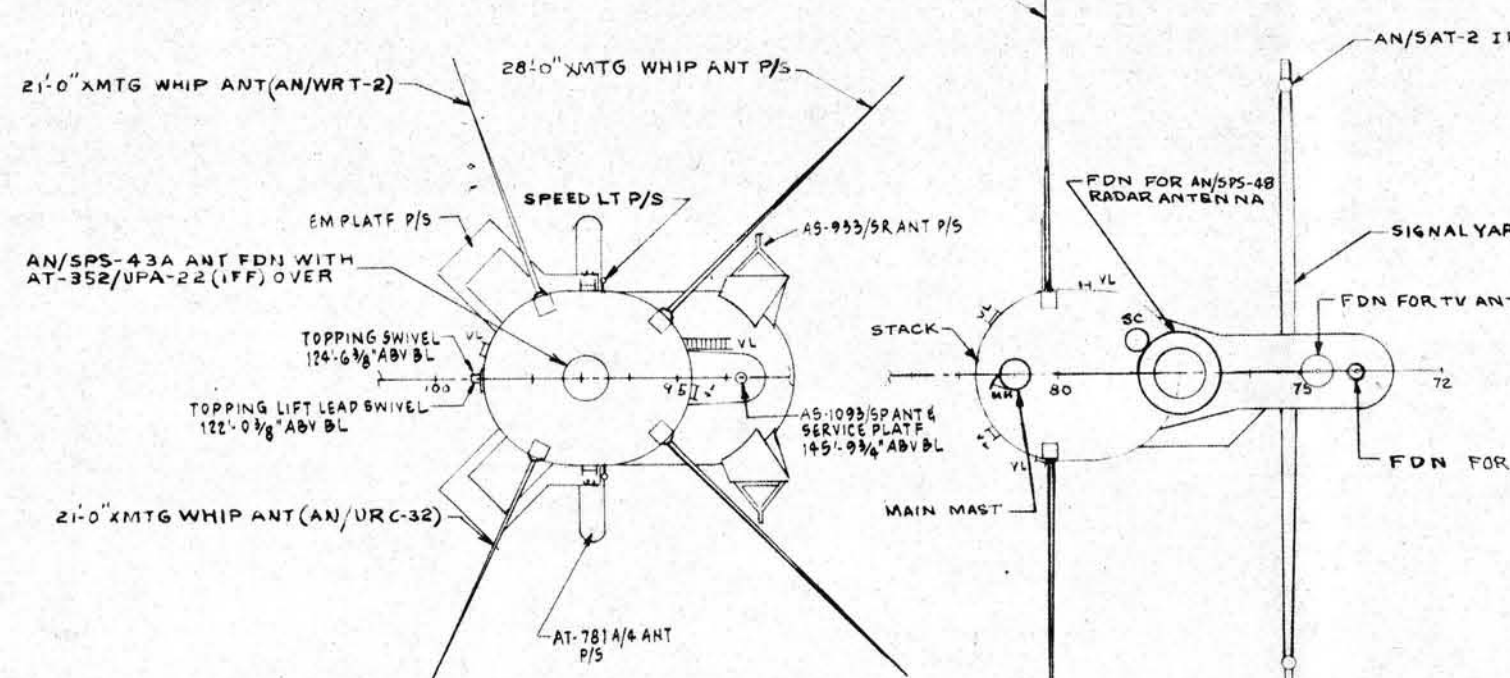
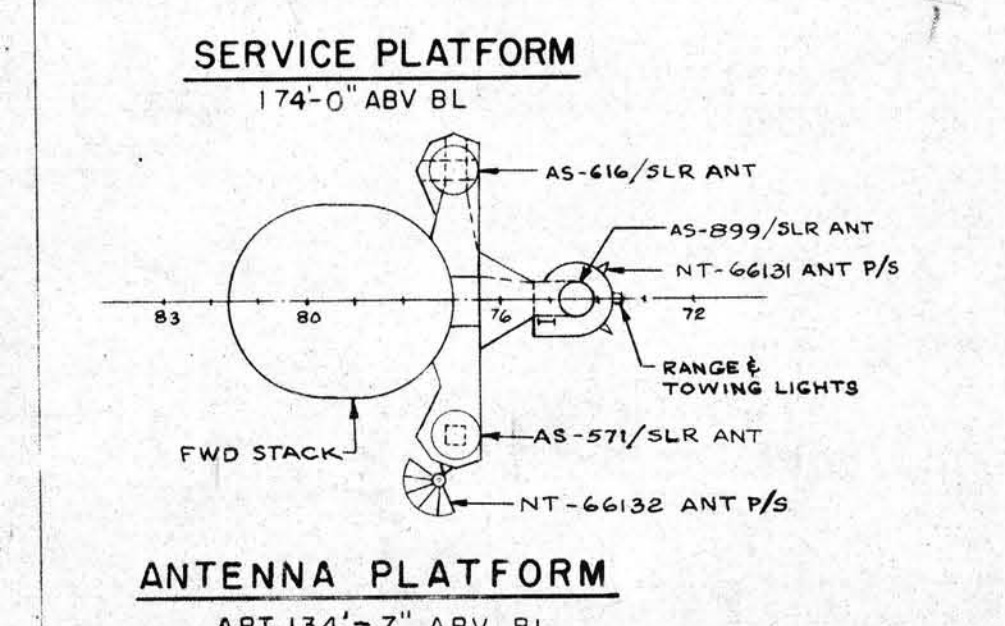
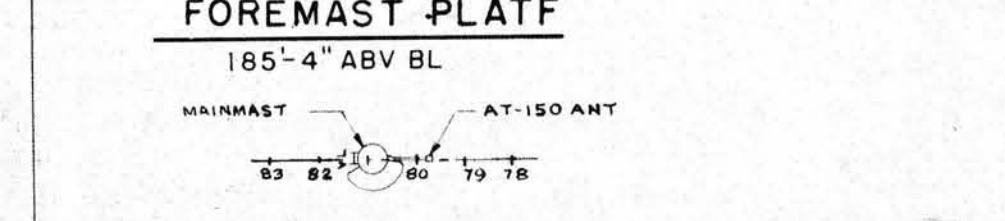
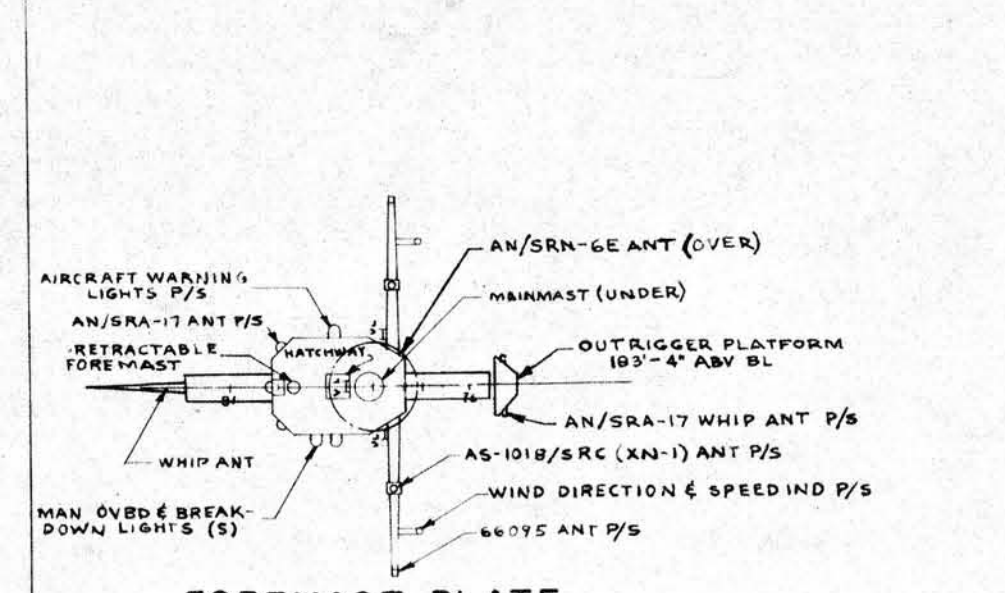
ACCOMMODATIONS

PERSONNEL	BEDS	TRANSOM BERTHS	BERTHS	BERTH LOCKERS	TYPE "A" LKRS
CAPTAINS SEA CABIN		1			
FLAG SEA CABIN		1			
CAPTAINS STATEROOM	1				
FLAG STATEROOM	1				
CHIEF OF STAFF STATEROOM	1				
EXECUTIVE OFFICERS STATEROOM	1				
SHIPS OFFICERS STATEROOMS		8			
WARDROOM STATEROOMS			72		
CREWS LIVING SPACES			1107	1107	
C.P.O. LIVING SPACES			67		67
MARINES LIVING SPACE			42	42	
SICK BAY WARD			16		
ISOLATION WARD			4		
TOTAL	4	10	1280	1121	67

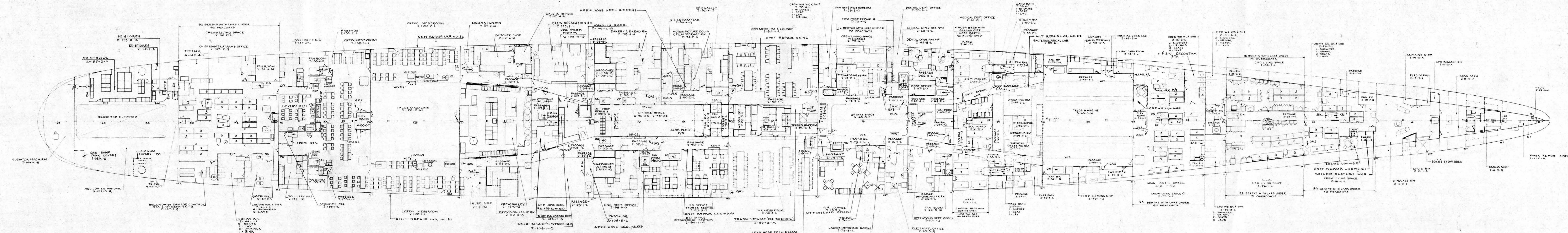
GRAND TOTAL MINUS SEA CABINS AND WARDS 1100.

SMALL BOATS

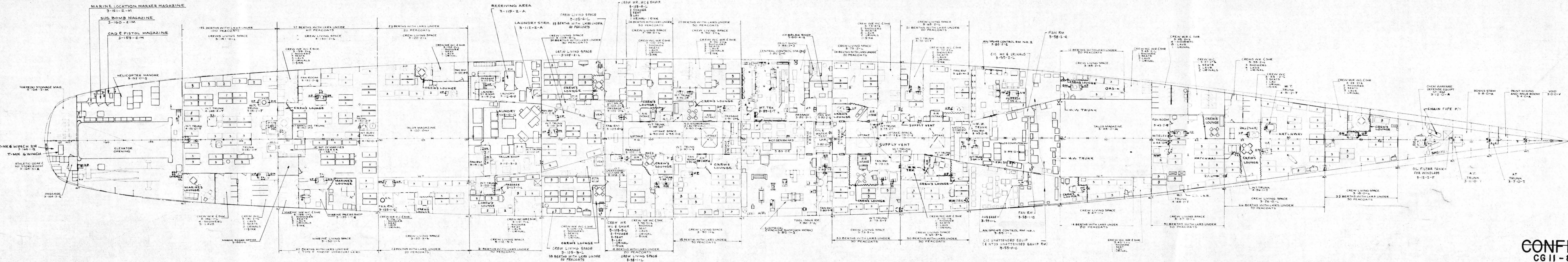
NO	NAME	MEN EACH	TOTAL MEN
2	14' PUNTS (PLASTIC)	5	10
1	33' PERSONNEL BOATS (PLASTIC) MK 2	24	24
3	40' UTILITY BOATS (PLASTIC) MK 3	75	225
1	40' PERSONNEL BOAT MK 2	43	43
81	CO2 INFLATABLE LIFEBOATS	15	1215
2	26' MOTOR WHALEBOATS	20	40
GRAND TOTAL MINUS 14' PUNTS - 1547		TOTAL	1557

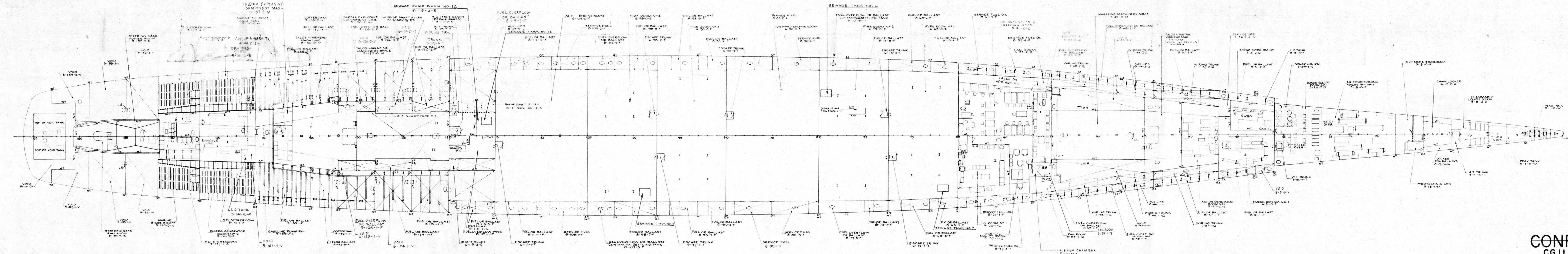


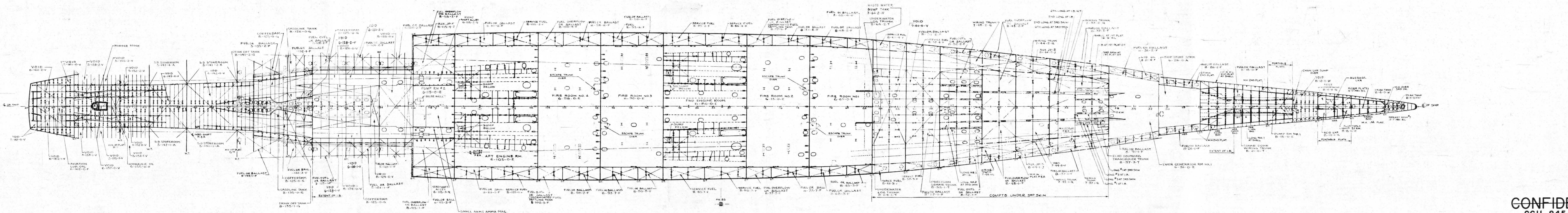
CONFIDENTIAL



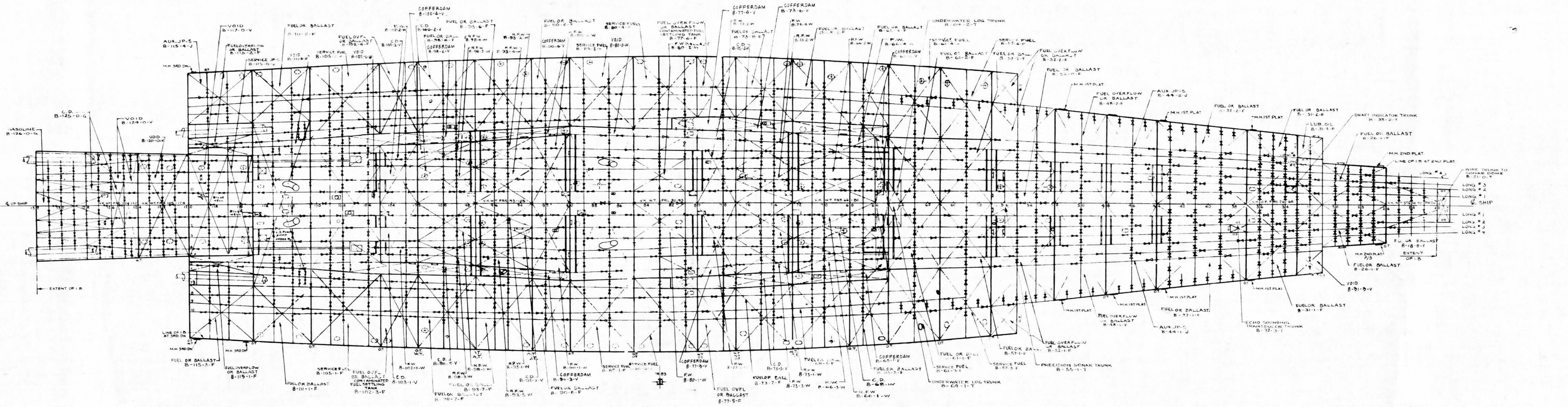
CONFIDENTIAL
CG11-845-1072834
SECOND DECK
SCALE 1/16"=1'-0"
PLATE 10 OF 16



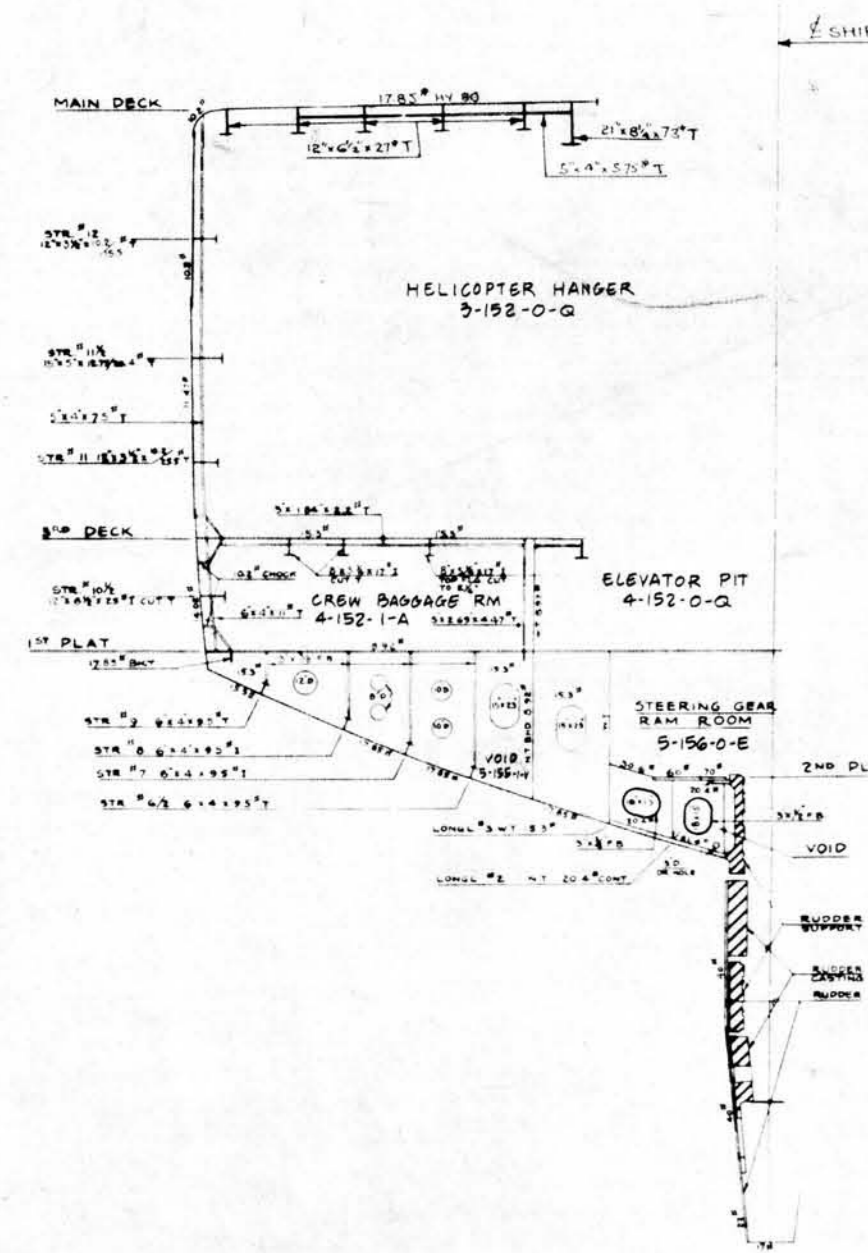




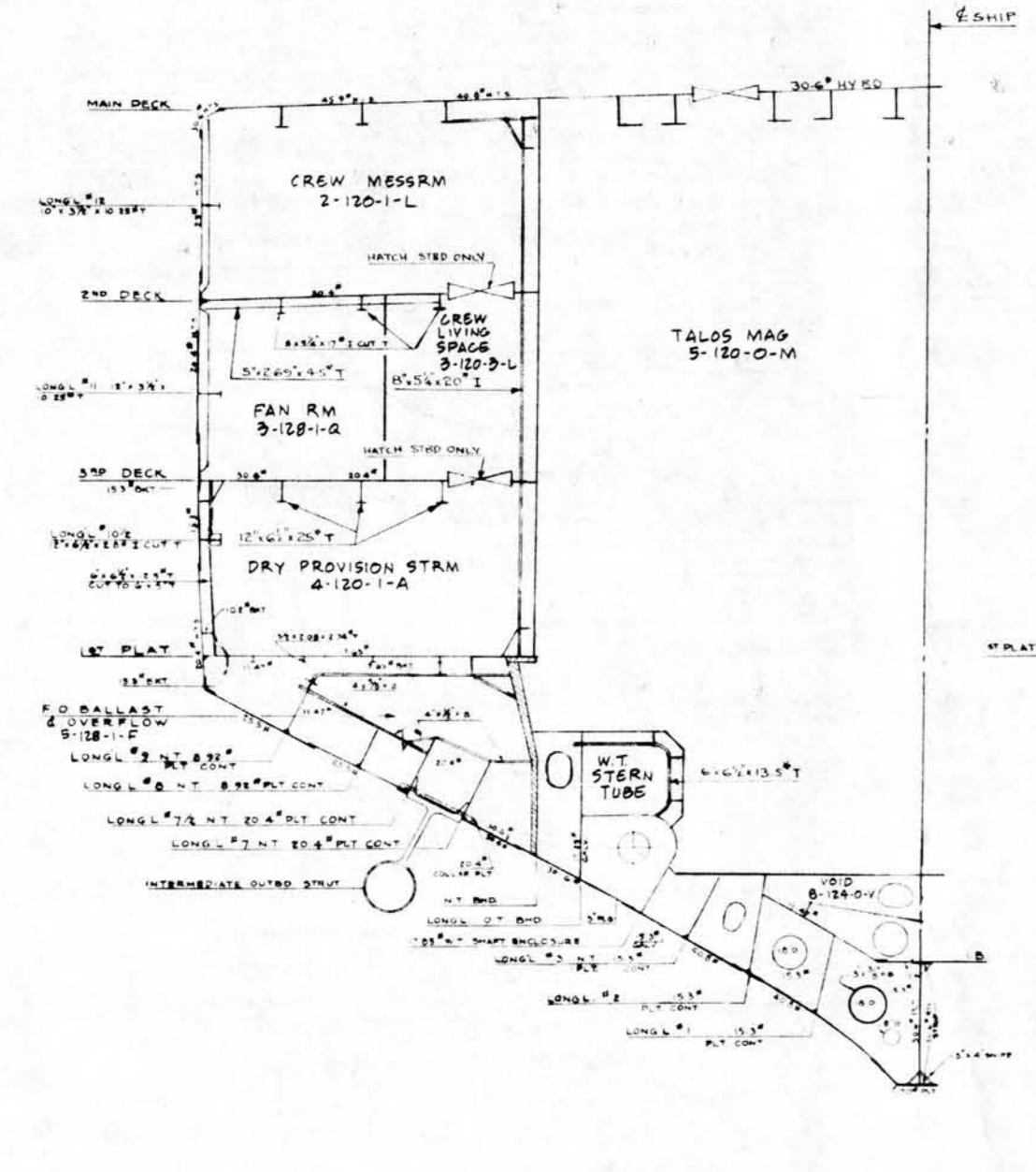
CONFIDENTIAL



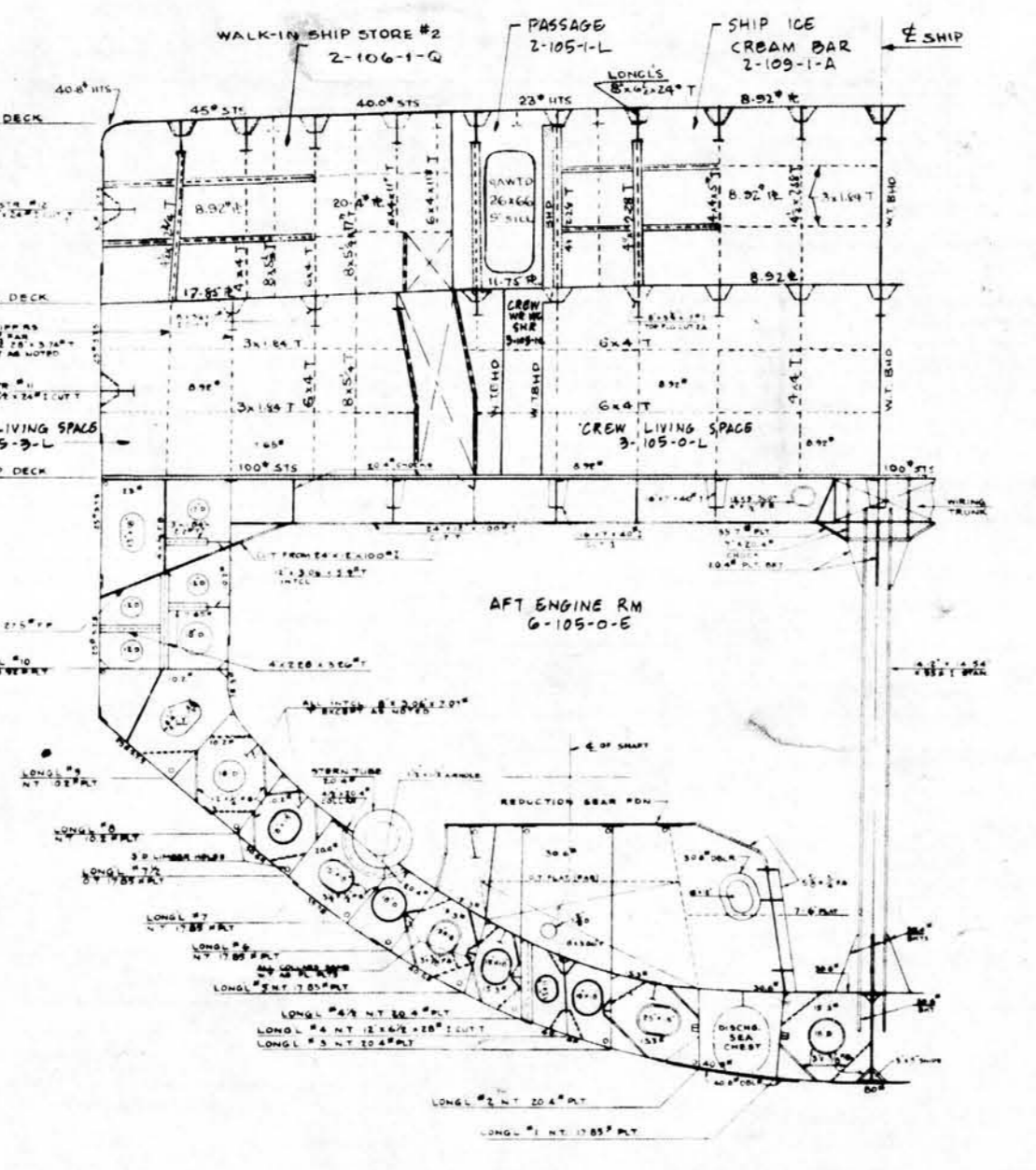
CONFIDENTIAL
 CG11-845-1072834
 INNER BOTTOM
 SCALE 1/16"=1'-0"
 PLATE 15 OF 16



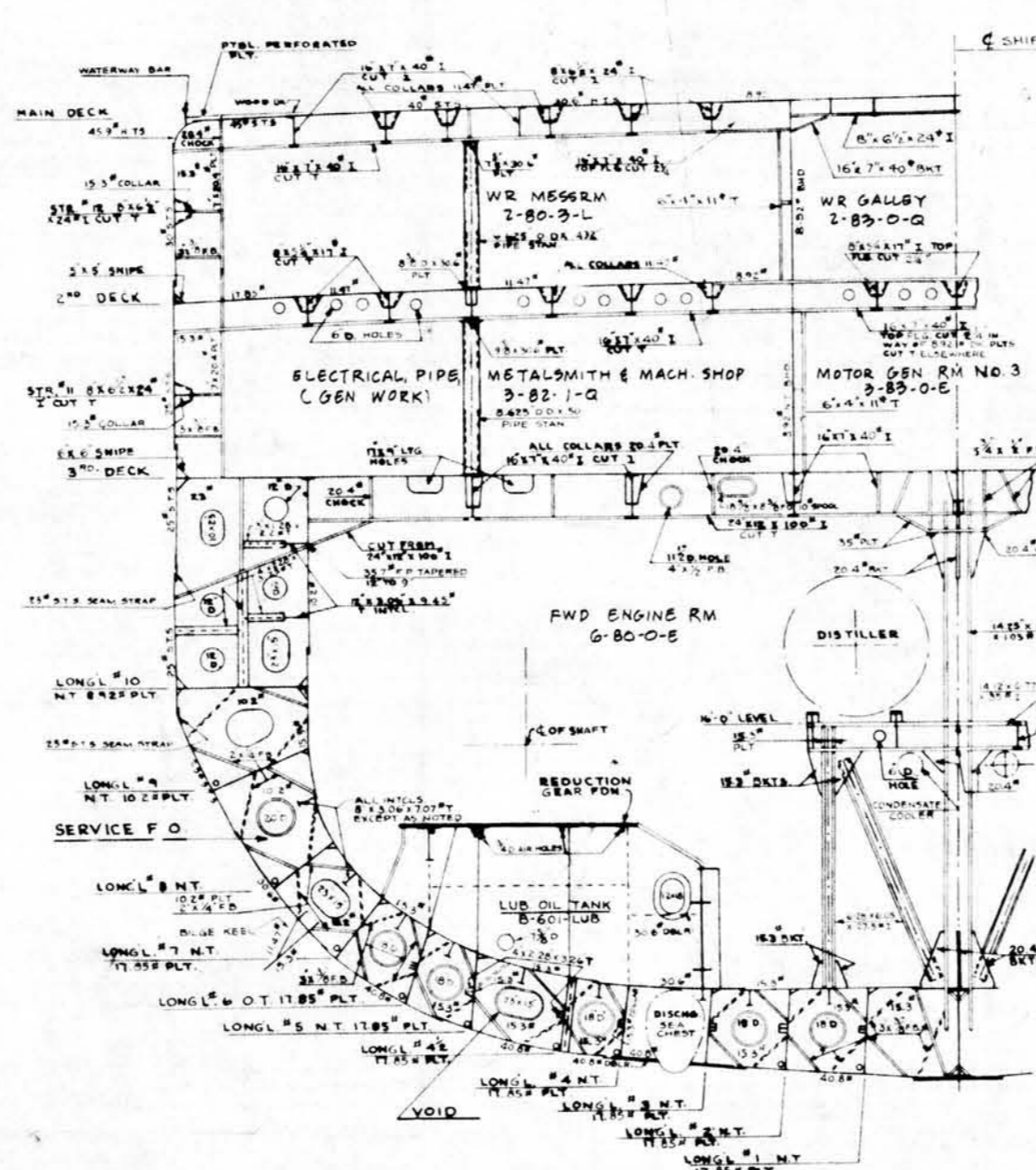
FRAME 158
LKG AFT



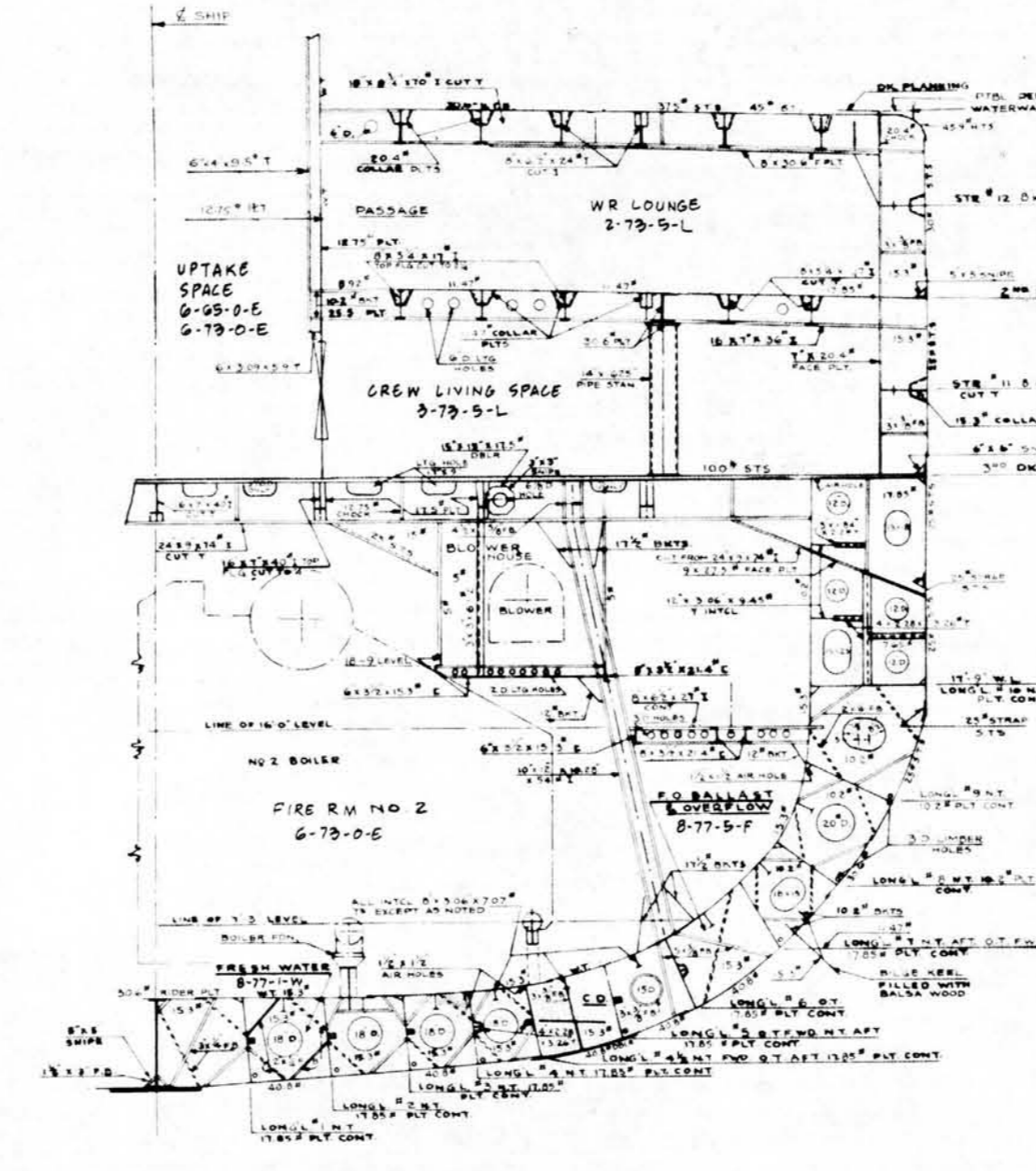
FRAME 129
LKG AFT



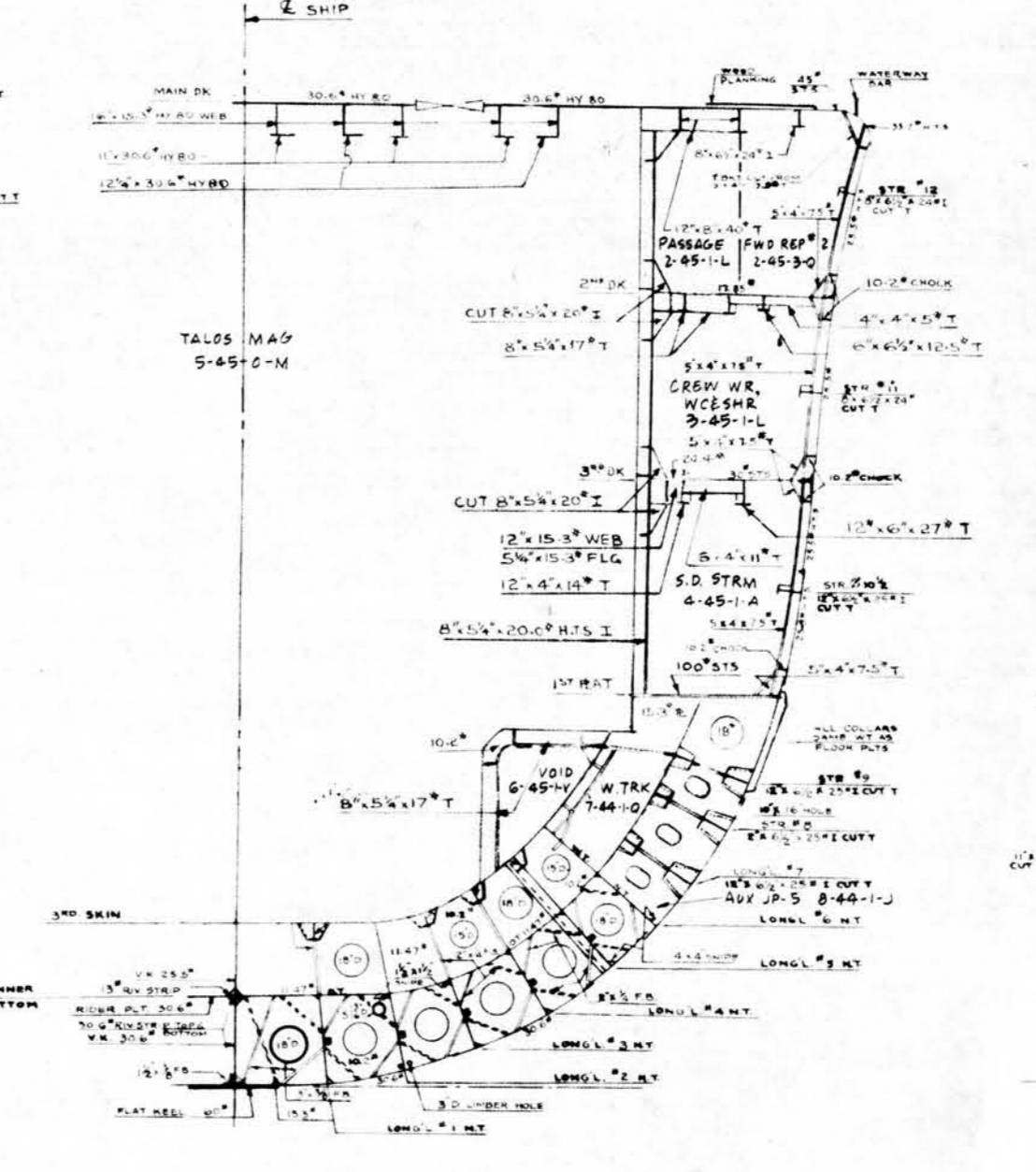
FRAME 112
LKG AFT



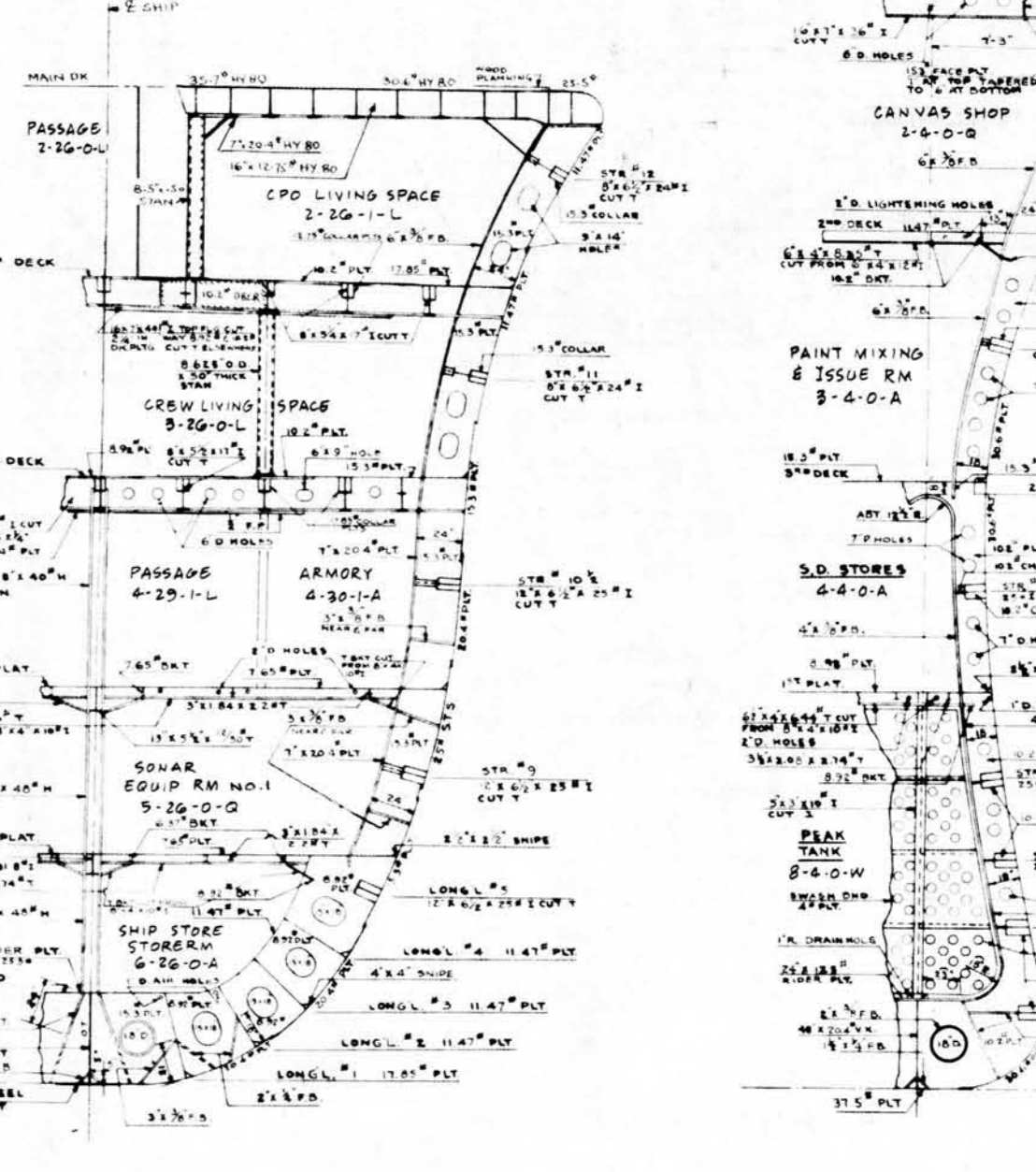
FRAME 87
LKG AFT



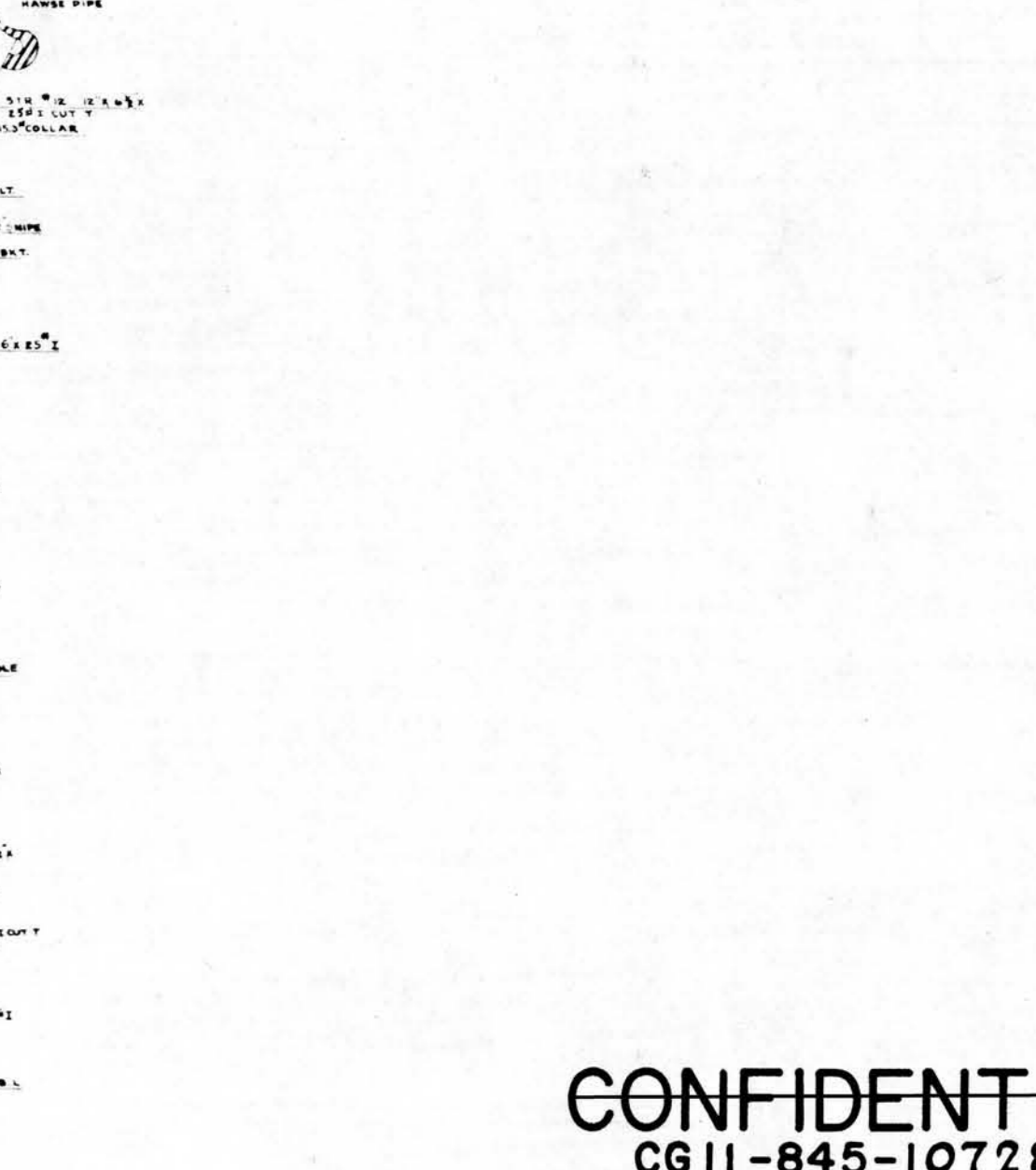
FRAME 78
LKG FWD



FRAME 46
LKG FWD



FRAME 30
LKG FWD



FRAME 6
LKG FWD