

ARINE SS389

F GENERAL PLANS

1. TITLE COVER
2. GENERAL DIMENSIONS
3. OUTBOARD PROFILE
4. INBOARD PROFILE
5. MAIN DECK
6. PLATFORM DECK
7. HOLD
8. TYPICAL SECTIONS
9. TYPICAL SECTIONS

NAVY YARD, PORTSMOUTH, N.H.

MADE BY CARVER
CHECKED BY WATTS
IN CHG. OF WORK C. Hall
PRIN. NAV. ARCH. Lawish

BU. NO. SS389-SO103-68261

March 17 1944

R. A. Taylor
TECHNICAL OFFICER

A. M. Morgan
PLANNING OFFICER

A-846

CONFIDENTIAL

SUBMARINE

BOOKLET OF GENERAL INFORMATION

CORRECTED TO SUIT SHIP		
PLACE	DATE	PLANNING OFFICER

- PLATE NO. 1. TITLE COVER
- PLATE NO. 2. GENERAL DIMENSIONS
- PLATE NO. 3. OUTBOARD PROFILE
- PLATE NO. 4. INBOARD PROFILE
- PLATE NO. 5. MAIN DECK
- PLATE NO. 6. PLATFORM DECK
- PLATE NO. 7. HOLD
- PLATE NO. 8. TYPICAL SECTIONS
- PLATE NO. 9. TYPICAL SECTIONS

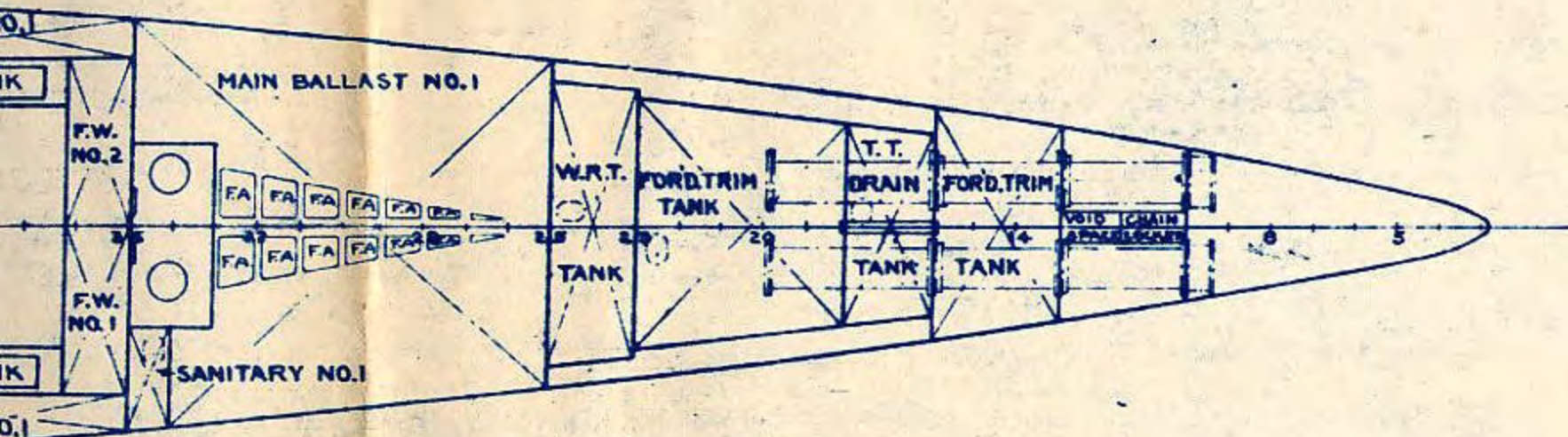
HEIGHTS	
LOWEST POINT OF KEEL TO TOP OF STRENGTH HULL AMIDSHIPS G.N.C.	19'-10"
LOWEST POINT OF KEEL TO TOP OF BRIDGE DECK	29'-4 1/4"
LOWEST POINT OF KEEL TO TOP OF HIGHEST PERISCOPE EXTENDED	66'-3 1/8"
LOWEST POINT OF KEEL TO TOP OF CONNING TOWER PLATING	28'-4 1/4"
LOWEST POINT OF KEEL TO TOP OF PERISCOPE FDN. <small>STRUCTURE ABOVE THIS POINT CAN BE UNBOLTED</small>	34'-2 1/4"
LOWEST POINT OF KEEL TO TOP OF PERISCOPE SUPPORTS	47'-3 1/2"

CAPACITIES OF TANKS VENT PIPING INCLUDED				
	GALS.	TONS OIL	FRESH WATER	GALS. TONS F.W.
			NOS. 1 & 2	1980 7.38
AP.	855	2.94	NOS. 3 & 4	1980 7.38
AP.	1002	3.44	TOTAL	3960 14.76
AP.	1473	5.06	BATTERY FRESH WATER	GALS. TONS F.W.
TAL	9330	11.44	FORD.	598 2.22
AP.	443	1.52	AFT	598 2.22
AP.	443	1.52	TOTAL	1196 4.44
AP.	443	1.52	COMB. TOTAL	5156 19.20
AP.	443	1.52	MAIN BALLAST	GALS. TONS S.W.
TAL	1772	6.08	NOS. 1	12718 48.58
TAL	5102	17.52	NOS. 2 A & 2 B	16870 64.44
ETCAP	184	.63	NOS. 2 C & 2 D	17001 64.94
ETCAP	184	.63	NOS. 6 A & 6 B	17938 68.52
ETCAP	390	1.34	NOS. 6 C & 6 D	19001 72.58
TAL	5860	20.12	NOS. 7	10694 40.85
	GALS.	TONS	SAFETY	6330 24.18
	11400	36.31	TOTAL	100552 384.10
	3050	41.56	FUEL BALLAST	GALS. TONS S.W.
	14800	47.45	NOS. 3 A & 3 B	8693 74.84
	9320	29.68	NOS. 4-A & 4-B	24425 93.30
	2980	9.49	NOS. 5-A & 5-B	19729 75.36
	2980	9.49	TOTAL	63747 243.50
	950	3.02	COMB. TOTAL	64299 247.60
TAL	55580	177.00	NEGATIVE	2110 8.06
SEAL	GALS.	TONS OIL	VARIABLE BALLAST	GALS. TONS S.W.
	9220	61.21	AUXILIARY NOS. 1	8184 31.26
	23902	76.12	AUXILIARY NOS. 2	8184 31.26
	19310	61.30	FORD. TRIM	6432 24.57
L	52432	98.83	FORD. W.R.T.	1309 5.00
TAL	118012	373.83	AFTER TRIM	5414 20.68
	GALS.	TONS S.W.	AFTER W.R.T.	1382 5.28
	320	1.22	TOTAL	30905 118.05
	1100	4.20	BOW BUOYANCY	7906 30.02
TAL	1420	5.42		

PRINCIPAL DIMENSIONS	
LENGTH OVERALL	311'-6"
LENGTH BETWEEN PERPENDICULARS	306'-10"
BREADTH, MOLDED	27'-1 1/4"
BREADTH, EXTREME	27'-3 1/4"
PROJECTION FORD OF F.P.	4'-8"
LENGTH OF STRAIGHT KEEL	154'-7 1/4"
DRAFT - SURFACE CONDITION TO UNDERSIDE OF KEEL PLATES (MEAN)	15'-3"
RATIO - LENGTH TO BEAM	11.41
SHAFTS DIVERGE AT ANGLE WITH & OF SHIP	1'-35"
SHAFTS & AT REDUCTION GEAR (14' AFT OF FR. 104) FROM & OF SHIP	4'-3 1/2"
SHAFTS & AT REDUCTION GEAR (14' AFT OF FR. 104) ABOVE BASE LINE	8'-0"
SHAFTS RAKE OUTBOARD & AFT .02674" PER INCH FROM &	
SHAFTS RAKE FROM BASELINE & FORD. .02613" PER INCH FROM BASELINE	
SHAFTS & FROM BASELINE AT FR. 12 B	6'-9"
SCREWS CENTER FORD. OF A.P.	18'-6"
RUDDER AXIS FORD. OF A.P.	10'-6"
NUMBER OF FRAMES	137
FRAME SPACING - BY FR. 35-24 FR. 35 TO FR. 62-30 FR. 62 TO FR. 69-24 FR. 69 TO FR. 103-30 FR. 103 TO FR. 104-24 FR. 104 TO FR. 106-30 FR. 106 TO FR. 137-24	

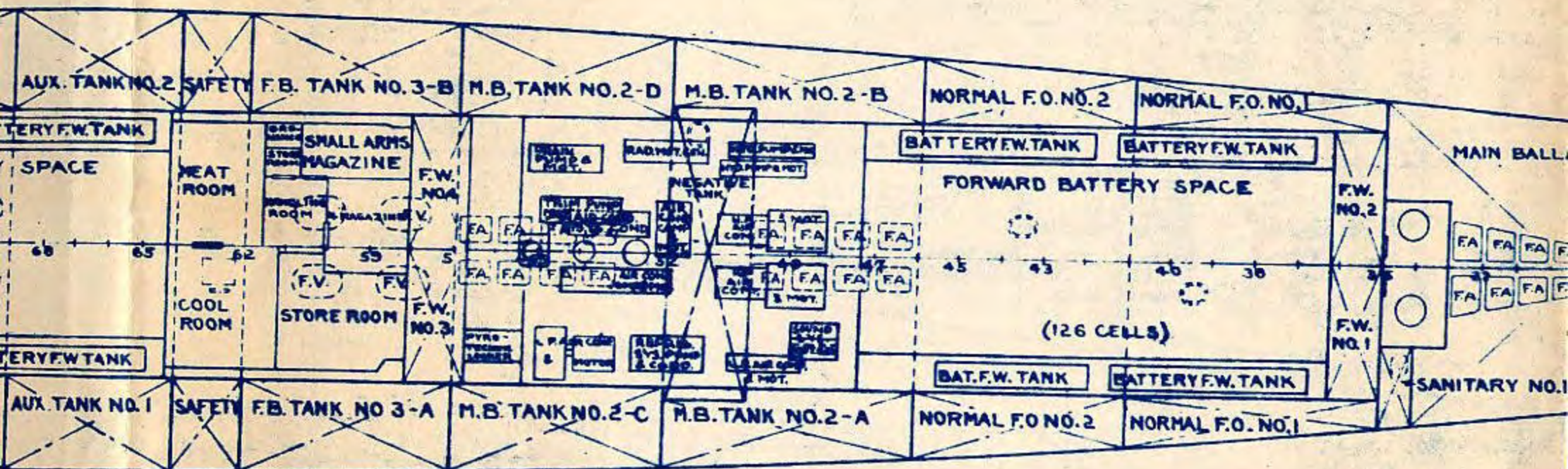
SUBMARINE SS 389
GENERAL DIMENSIONS
PLATE NO. 2
BU. NO. SS389-SO103-68261

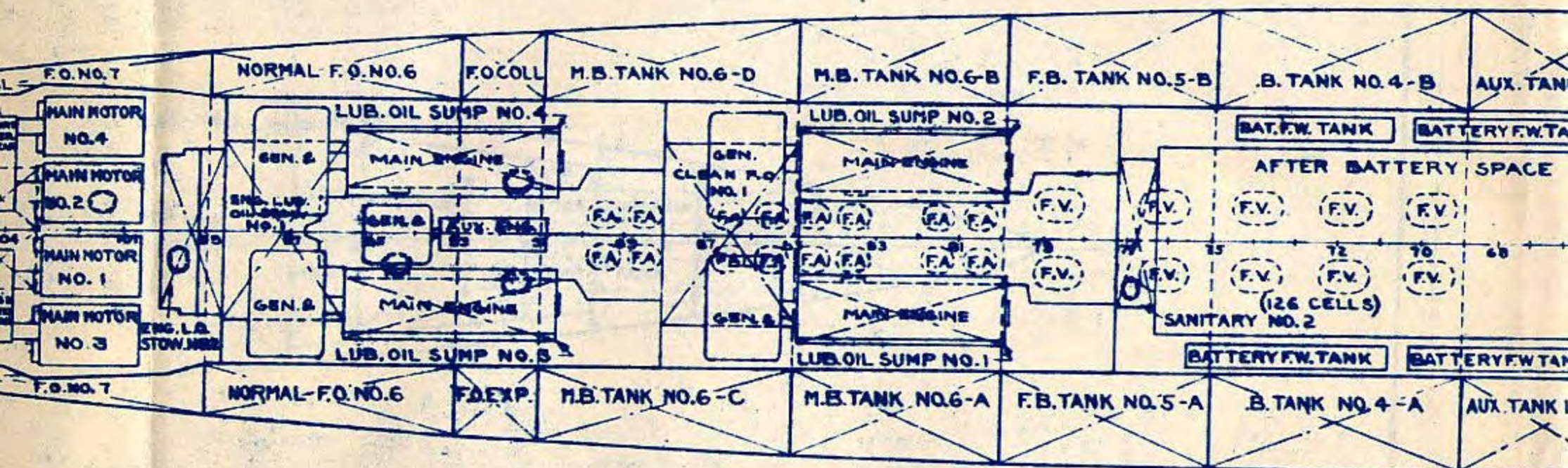
CAPACITIES OF TANKS			
LUBRICATING OIL	GALS.	TONS OIL	FRESH
			NOS. 1 & 2
ENGINE STOWAGE NO. 1 95% NET CAP.	855	2.94	NOS. 3 & 4
ENGINE STOWAGE NO. 2 95% NET CAP.	1002	3.44	
ENGINE STOWAGE NO. 3 95% NET CAP.	1473	5.06	BATTERY
TOTAL	3330	11.44	FORD.
MAIN ENGINE SUMP NO. 1 75% NET CAP.	443	1.52	AFT
MAIN ENGINE SUMP NO. 2 75% NET CAP.	443	1.52	
MAIN ENGINE SUMP NO. 3 75% NET CAP.	443	1.52	
MAIN ENGINE SUMP NO. 4 75% NET CAP.	443	1.52	MAIN BATTERY
TOTAL	1772	6.08	NO. 1
COMB. TOTAL	5102	17.52	NOS. 2 A & B
MOTOR & RED GEAR SUMP NO. 1 75% NET CAP.	184	.63	NOS. 2 C & D
MOTOR & RED GEAR SUMP NO. 2 75% NET CAP.	184	.63	NOS. 6 A & B
MOTOR & RED GEAR STOWAGE 5% NET CAP.	390	1.34	NOS. 6 C & D
TOTAL	5860	20.12	NO. 7
NORMAL FUEL OIL	GALS.	TONS	SAFETY
NO. 1	11400	36.31	
NO. 2	13050	41.56	FUEL B
NO. 6	14900	47.45	NOS. 3 A
NO. 7	9320	29.68	NOS. 4 - A & B
COLLECTING	2980	9.49	NOS. 5 - A & B
EXPANSION	2980	9.49	
CLEAN NO. 1 95% NET CAP.	950	3.02	
TOTAL	55580	177.00	NEGATIVE
FUEL BALLAST (MINUS WATER SEAL)	GALS.	TONS OIL	VARIABLE
NOS. 3 - A & 3 - B	9220	61.21	AUXILIARY
NOS. 4 - A & 4 - B	23902	76.12	AUXILIARY
NOS. 5 - A & 5 - B	19310	61.30	FORD. TANK
TOTAL	52432	168.63	FORD. W.
COMB. TOTAL	118012	375.63	AFTER T
SANITARY	GALS.	TONS G.W.	AFTER W
NO. 1 (FORD)	320	1.22	
NO. 2 (AMIDSHIPS)	1100	4.20	BOW BU
TOTAL	1420	5.42	

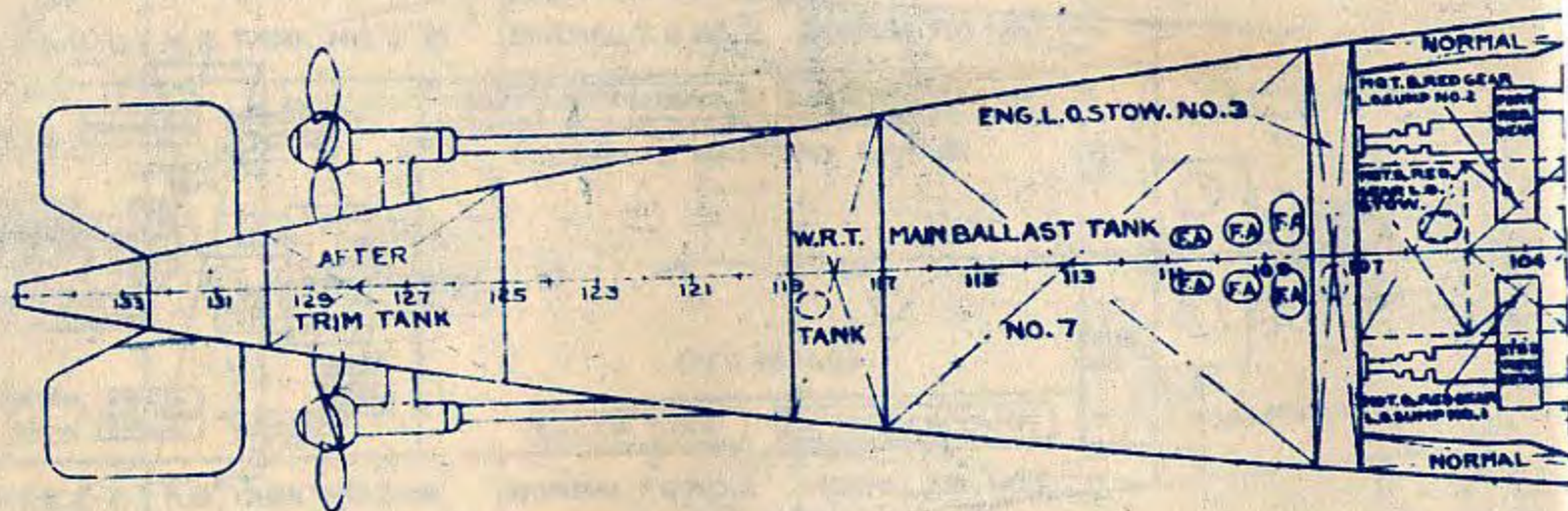


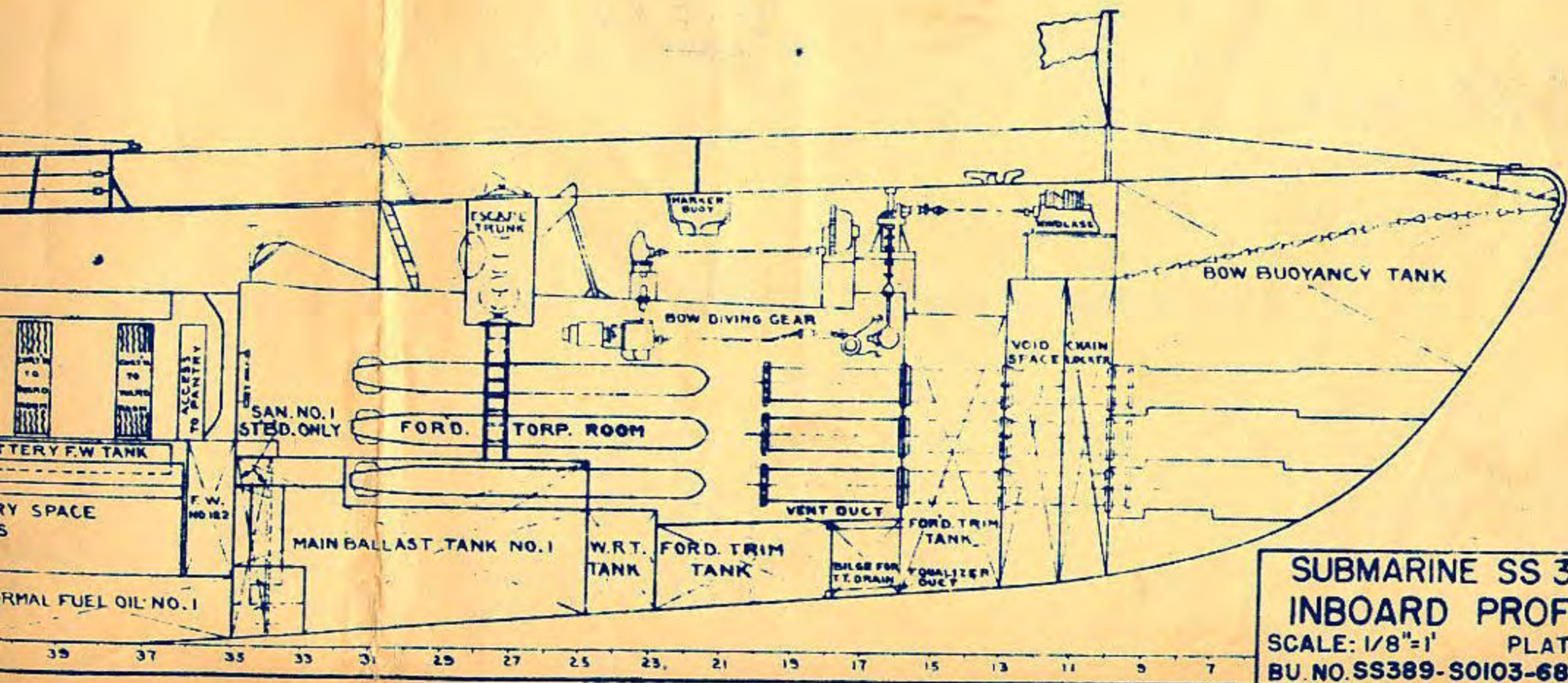
SUBMARINE SS 389
HOLD

SCALE: 1/8"=1' PLATE NO.7
BU.NO.SS389- S0103-68261

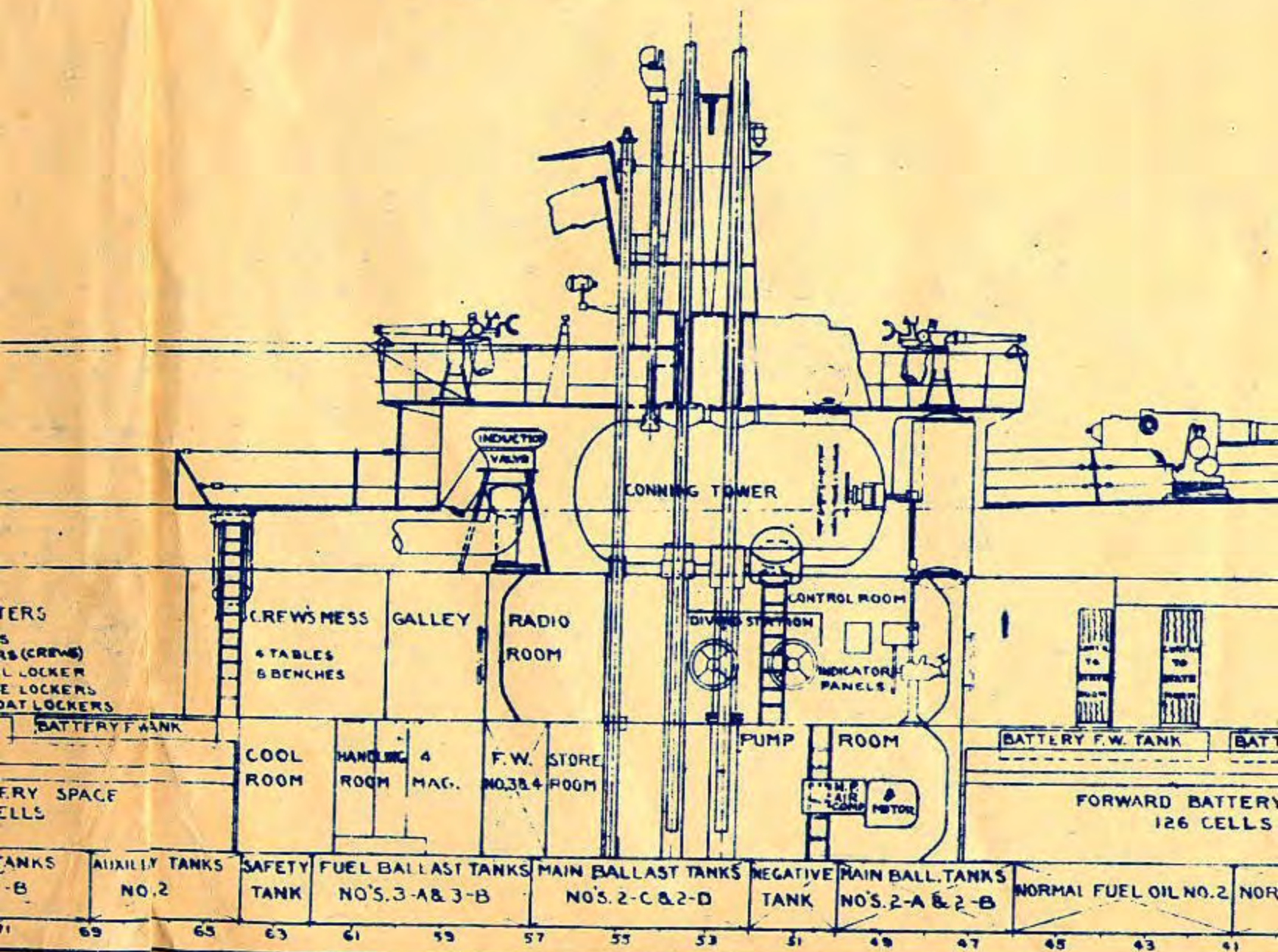


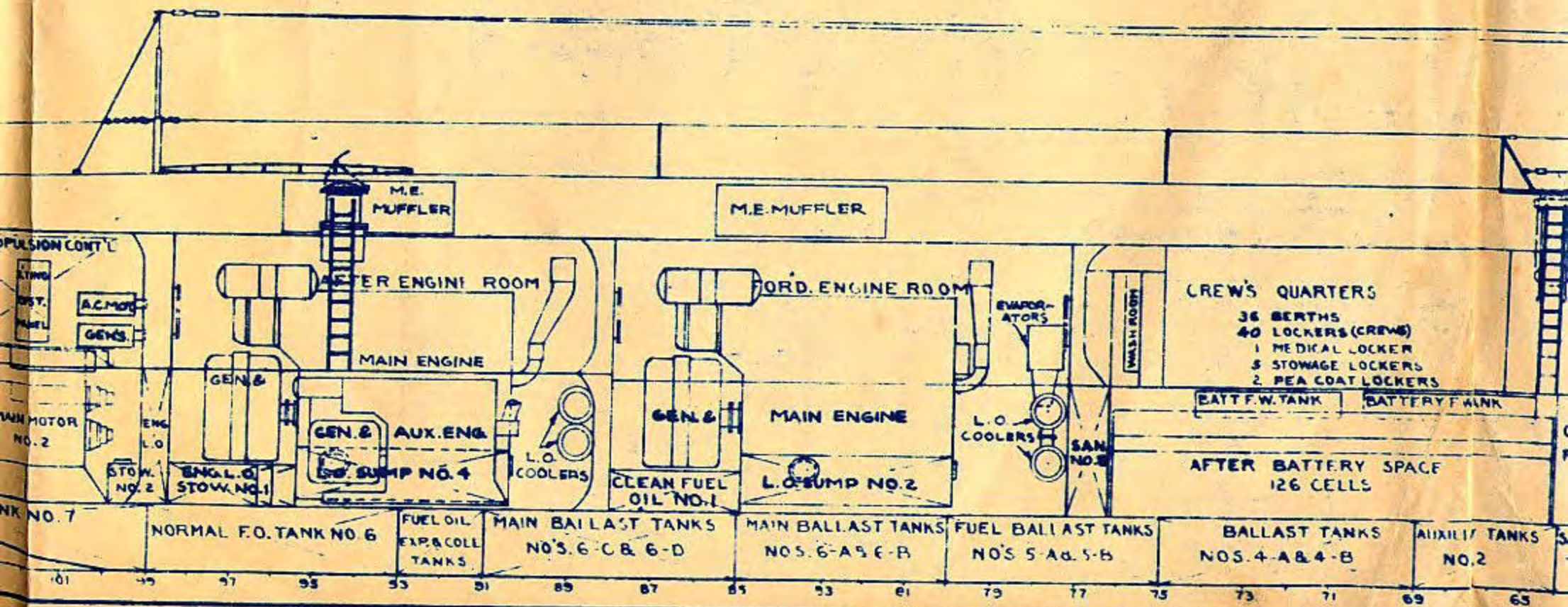


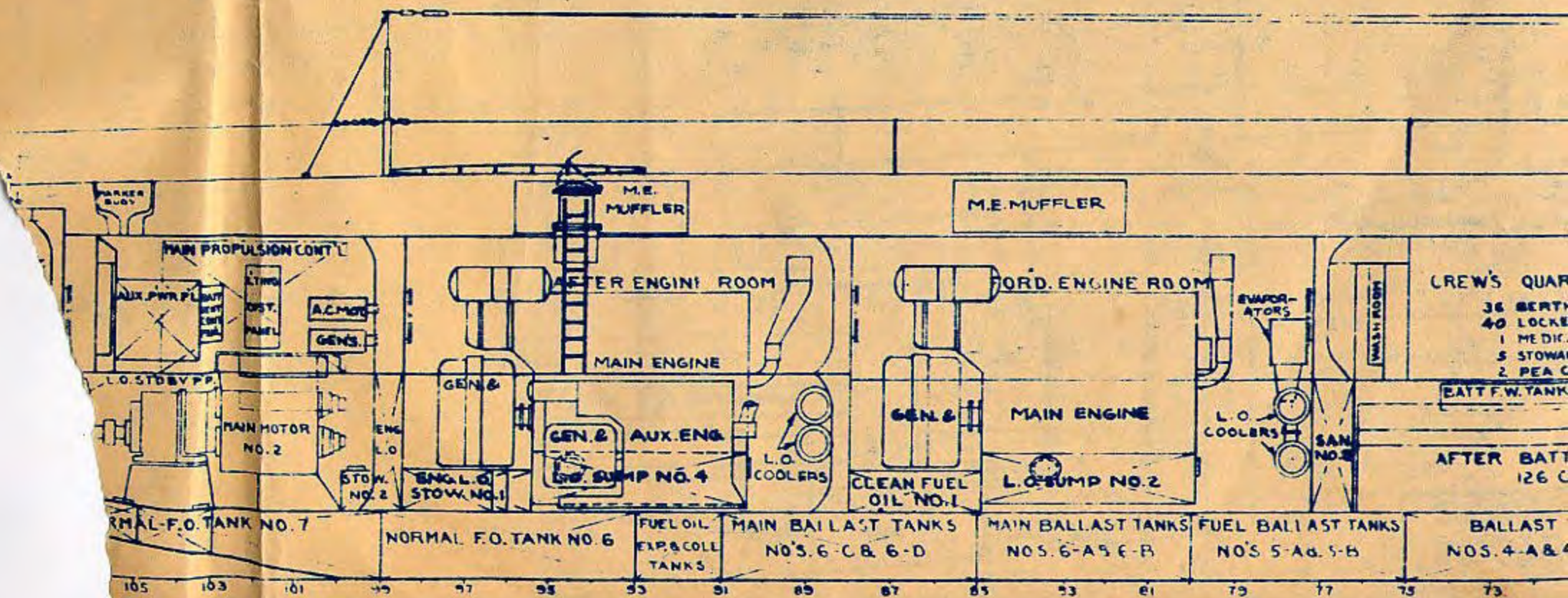


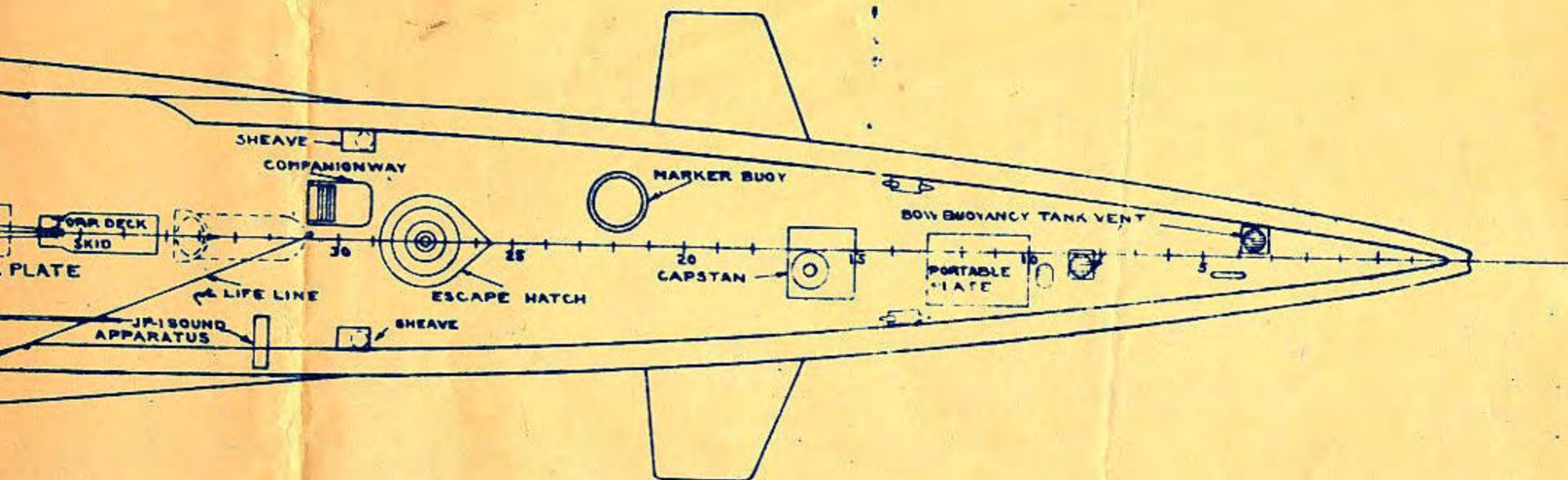


SUBMARINE SS 389
INBOARD PROFILE.
 SCALE: 1/8"=1' PLATE NO.
 BU. NO. SS389-SO103-68261



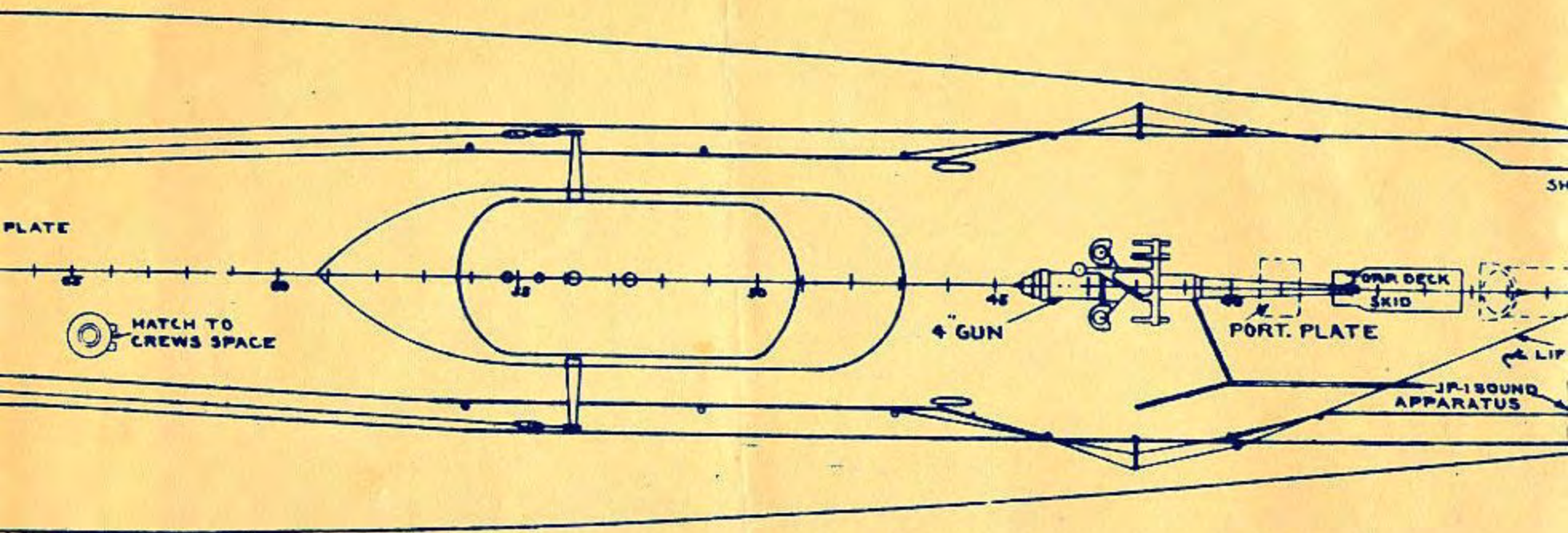


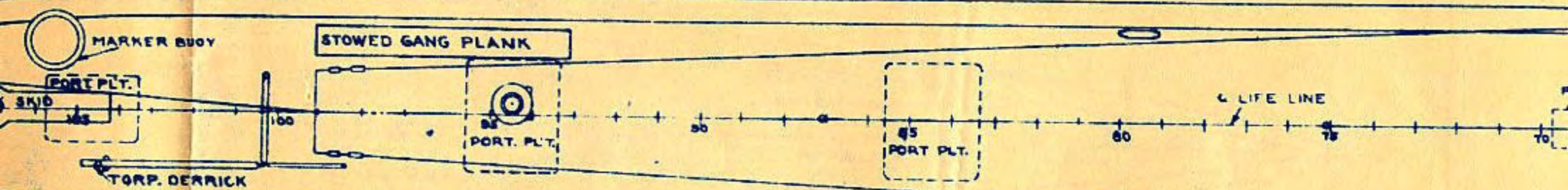


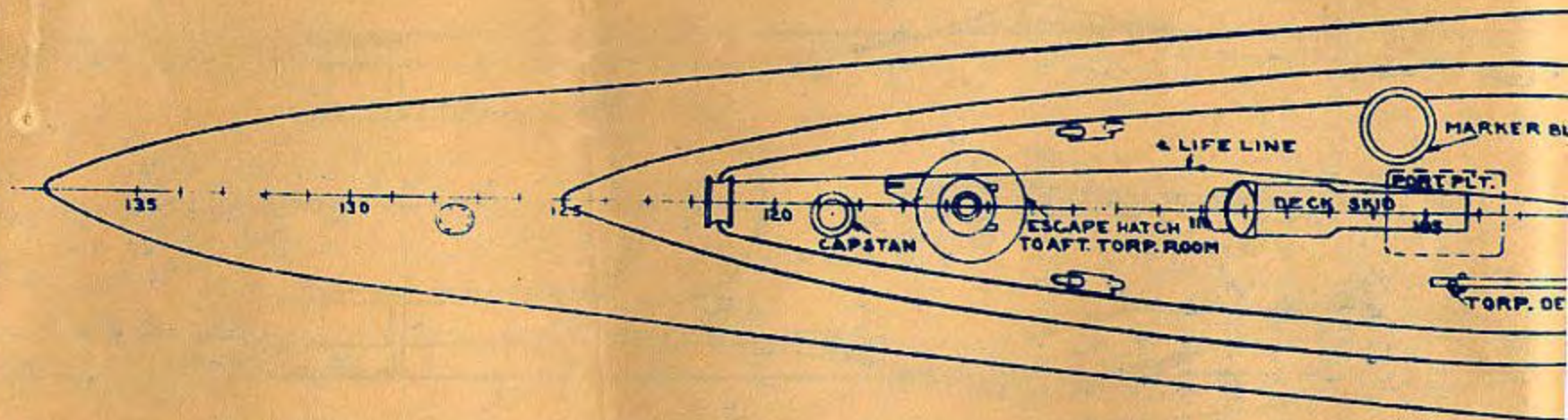


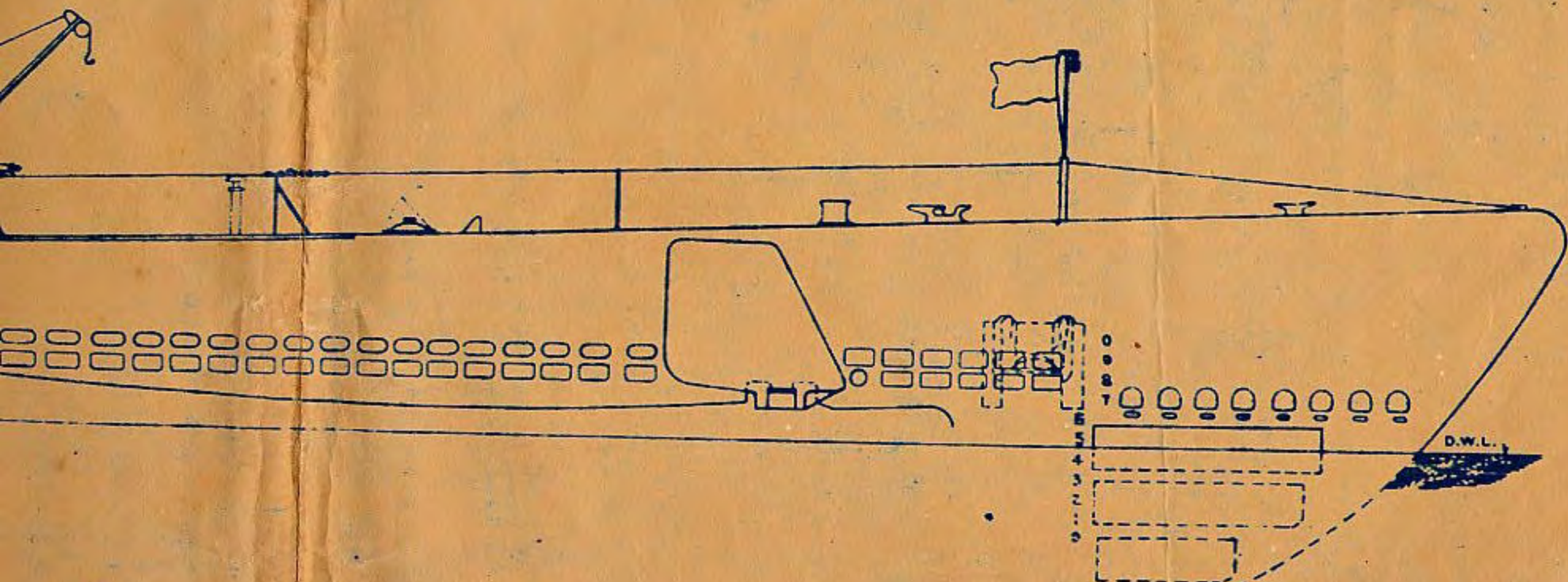
SUBMARINE SS 389
MAIN DECK

SCALE: 1/8"=1' PLATE NO. 5
BU. NO. SS389-50103-68261

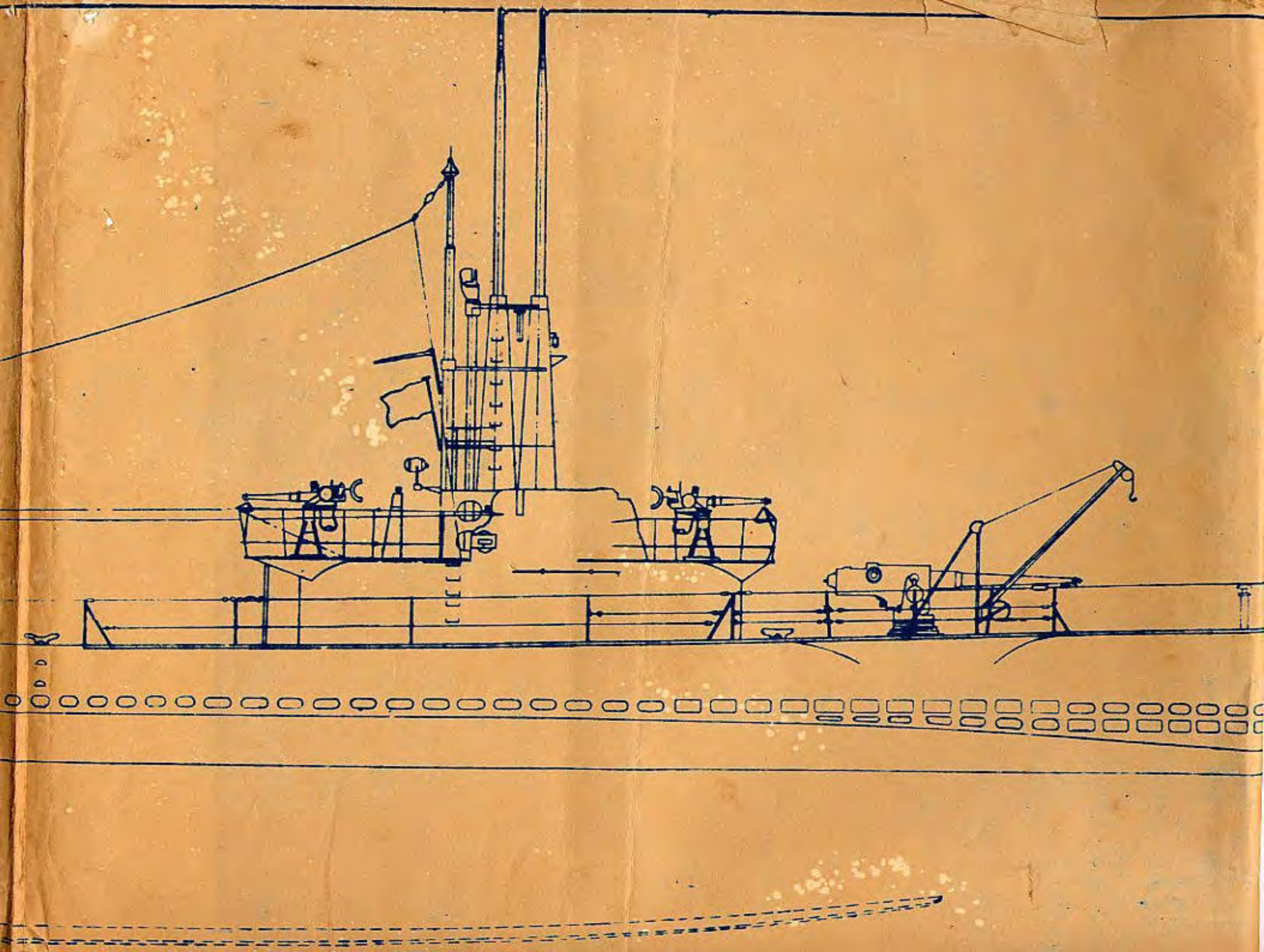


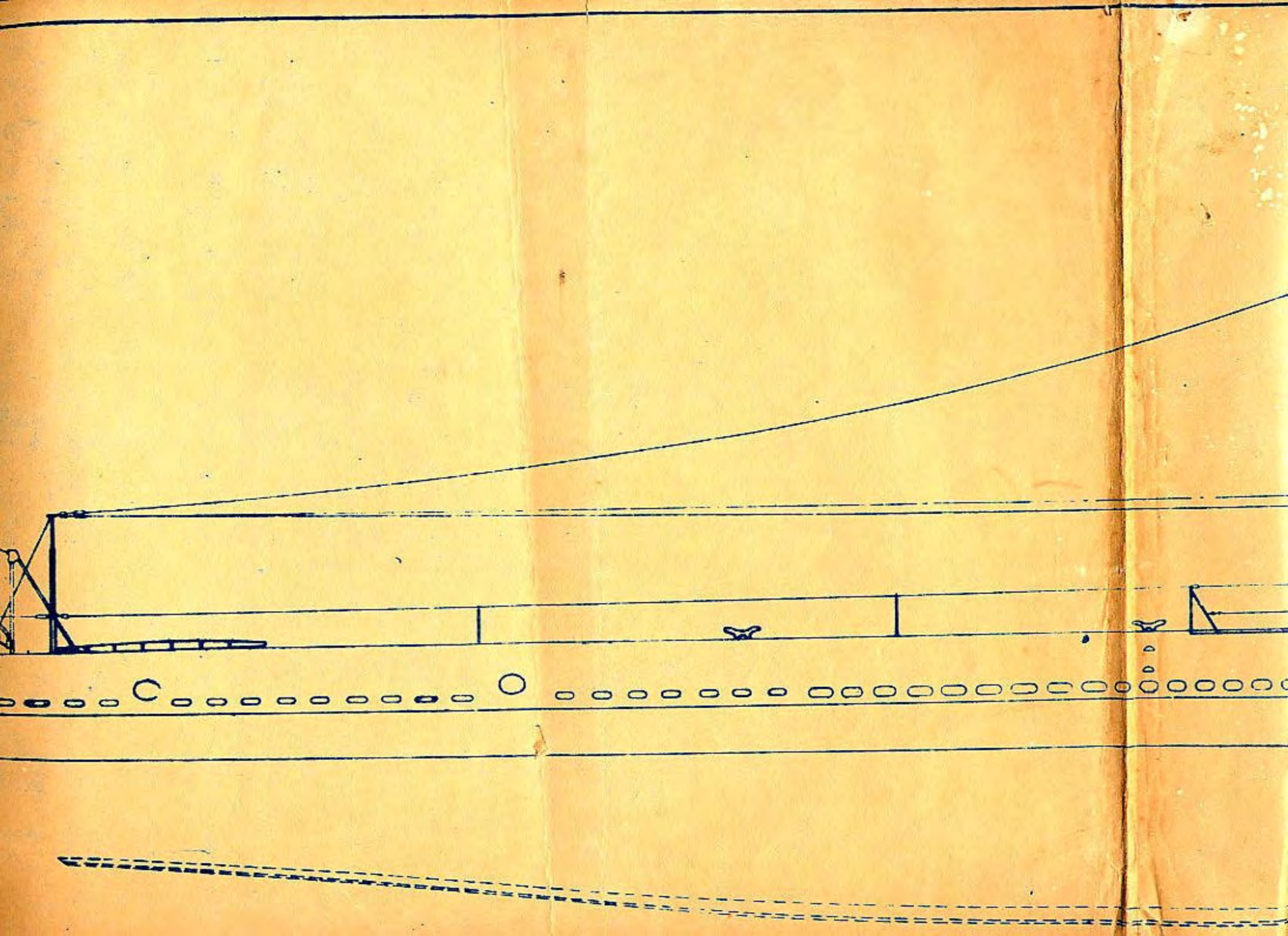


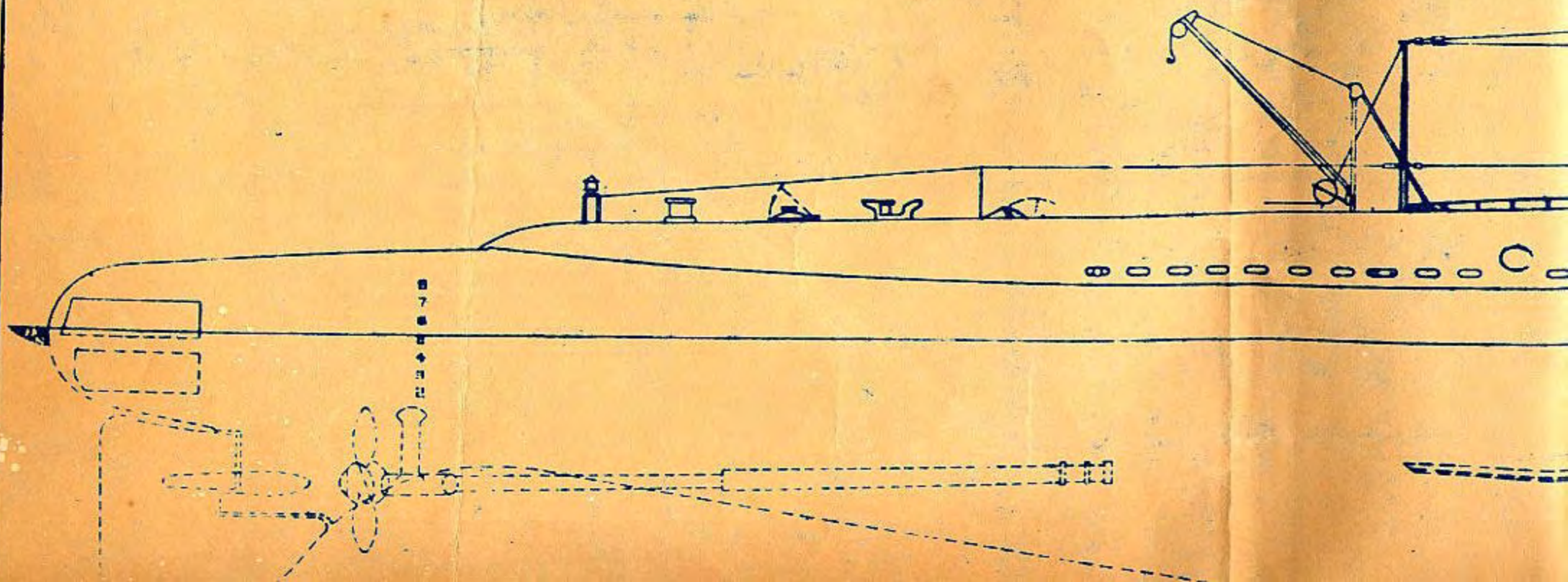


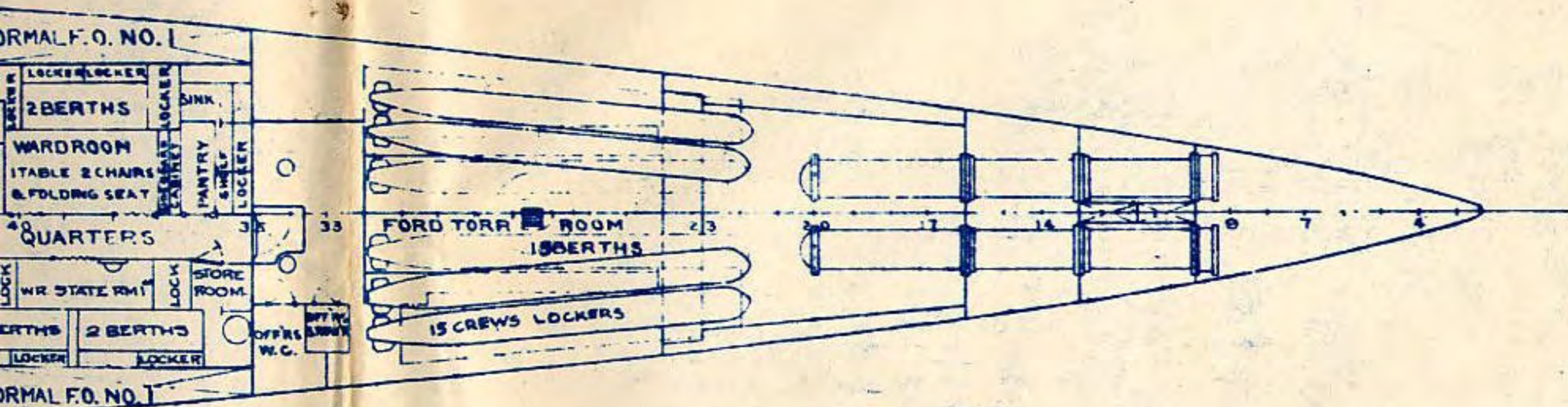


SUBMARINE SS 389
OUTBOARD PROFILE









SUBMARINE SS 389
 PLATFORM DECK
 SCALE: 1/8"=1' PLATE NO. 6

