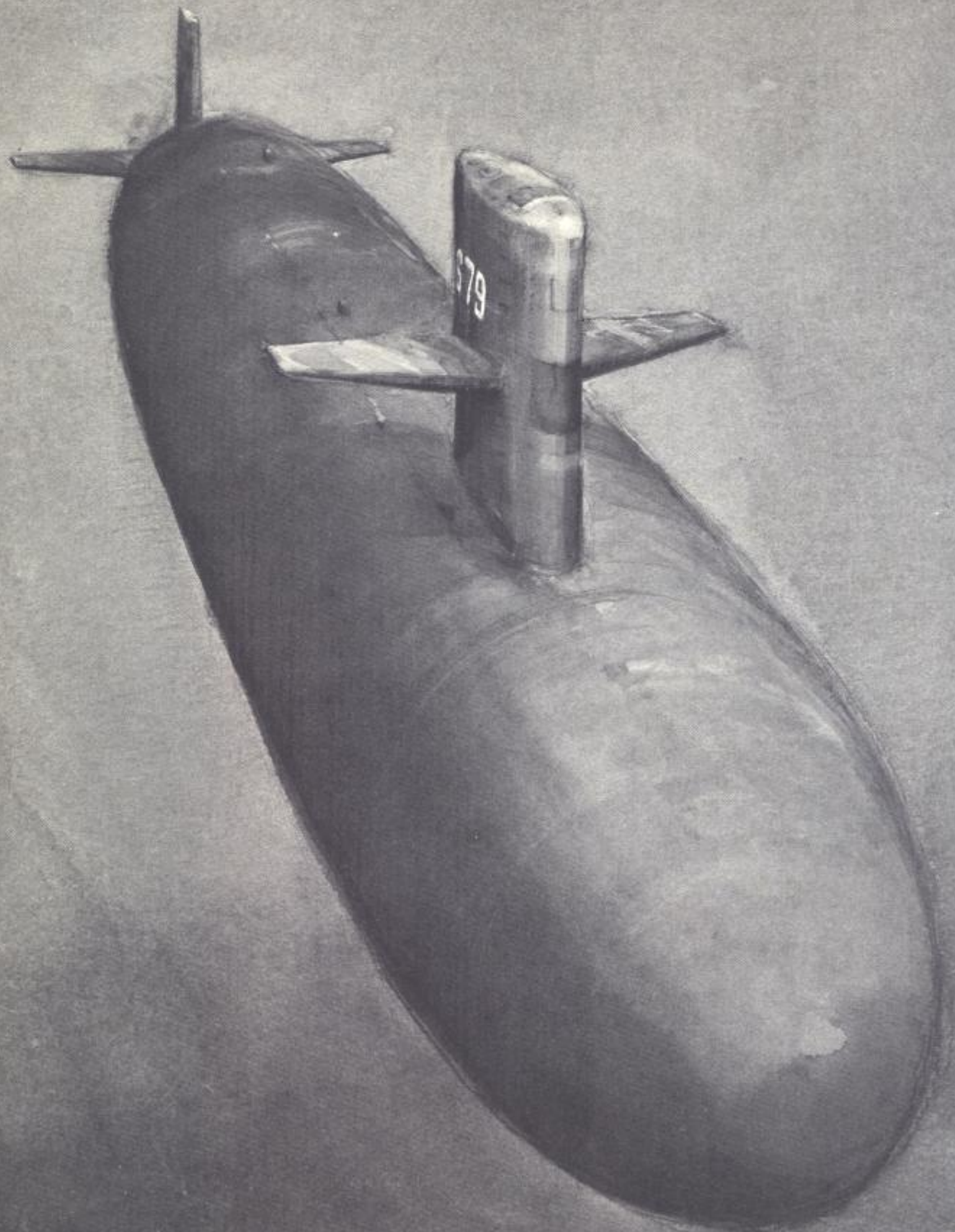


NAUTILUS SEAWOLF SKATE SWORDFISH SARGO SEADragon  
SKIPJACK TRITON HALIBUT SCAMP SCULPIN SHARK SNOOK  
PERMIT PLUNGER BARB JACK TULLIBEE GEORGE WASHINGTON  
PATRICK HENRY THEODORE ROOSEVELT ROBERT E. LEE GATO  
ABRAHAM LINCOLN HADDO POLLACK TINOSA ETHAN ALLEN  
JOHN MARSHALL GUARDFISH JAMES MADISON DANIEL BOONE  
DACE LAFAYETTE ALEXANDER HAMILTON THOMAS JEFFERSON  
ANDREW JACKSON JOHN ADAMS JAMES MONROE HENRY CLAY  
NATHAN HALE GREENLING WOODROW WILSON SAM HOUSTON  
THOMAS A. EDISON FLASHER DANIEL WEBSTER VON STEUBEN  
ULYSSES S. GRANT CASIMIR PULASKI NATHANAEAL GREENE  
STONEWALL JACKSON SAM RAYBURN TECUMSEH HADDOCK  
JOHN C. CALHOUN STURGEON KAMEHAMEHA SIMON BOLIVAR  
BENJAMIN FRANKLIN GEORGE BANCROFT LEWIS & CLARK  
JAMES K. POLK WHALE GRAYLING TAUTOG ASPRO SUNFISH  
POGY QUEENFISH PUFFER GURNARD GEORGE C. MARSHALL  
HENRY L. STIMSON WILL ROGERS RAY MARIANO G. VALLEJO  
FRANCIS SCOTT KEY GEORGE WASHINGTON CARVER PARGO  
SAND LANCE LAPON HAMMERHEAD SEA DEVIL GUITARRO  
HAWKBILL BERGALL NR-1 SPADEFISH SEAHORSE FINBACK  
NARWHAL PINTADO FLYING FISH TREPANG BLUEFISH  
BILLFISH DRUM ARCHERFISH

## SILVERSIDES

JUNE 4, 1971 • GROTON, CONNECTICUT • LAUNCHING





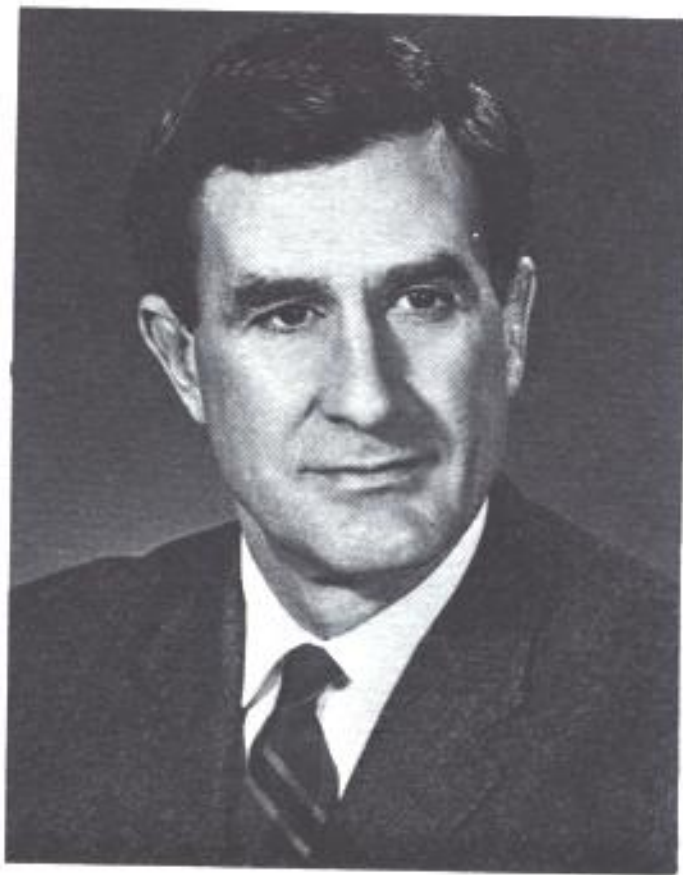


## USS SILVERSIDES (SSN679)

*Silversides* is the product of a mature technology. Like the fish whose name she bears, *Silversides* will be more at home in the deep underwater than on the surface.

- Fitted with extremely precise navigation systems, she need never surface to know her exact position.
- Equipped with sensitive sonar, she will look and listen in all directions — ahead, above, below, behind — discriminating, classifying, and identifying the natural and man-made objects that inhabit the seas.
- Her sensors and continuous-reading monitors, like a highly developed nervous system, will keep constant watch on all the physical processes and conditions vital to her well-being and her mission.
- Her crew will work, relax, sleep, and study in safety and comfort for weeks at a time . . . at any depth.





*Principal Speaker*  
**The Hon. John H. Chafee**  
 Secretary of the Navy

Secretary Chafee is the former governor of Rhode Island, having served three successive terms in that position before his appointment in January, 1969, as Secretary of the Navy. A graduate of Yale University and Harvard Law School, he is a veteran of six years active service with the United States Marine Corps during World War II and the Korean War. In 1953 he entered private law practice in Providence and became active in civic and political affairs. He was elected to the State House of Representatives in 1956 and reelected in 1958 and 1960.



*Ship's Sponsor*  
**Mrs. John H. Chafee**

Mrs. Chafee, the former Virginia Coates, is a graduate of Finch College in New York City. She is an active sports-woman who enjoys sailing, skiing, tennis, hiking, riding, and skating. Born in Dublin, New Hampshire, Mrs. Chafee spent her childhood in New York City. The Chafees reside in McLean, Virginia, but maintain a home in East Greenwich, Rhode Island. Three of the Chafee children, John, Georgia, and Quentin, live at home. Lincoln graduates on June 11 from Phillips-Andover Academy, and Zechariah attends Harvard.



*Prospective Commanding Officer*  
**Cdr. John E. Allen**

Commander John E. Allen, a native of Mamaroneck, N.Y., is Prospective Commanding Officer of *Silversides*. A graduate of Dartmouth College, he completed nuclear power training in 1962 and was assigned to *USS Lafayette* (SSBN616). In August, 1966, he joined the staff of Commander Submarine Squadron Six, serving there until August, 1968, when he became Executive Officer of *USS Bergall* (SSN667). Commander Allen and his wife, the former Jewelle Carlson, live in Gales Ferry, Connecticut, with their three children.

# PROGRAM

National Anthem	<b>United States Coast Guard Band</b>
Invocation	<b>Cdr. John K. Bontrager (CHC), USN</b>
Introduction	<b>Joseph D. Pierce</b> General Manager, Electric Boat Division Vice President, General Dynamics
Remarks	<b>David S. Lewis</b> Chairman and President General Dynamics
Address	<b>The Honorable John H. Chafee</b> Secretary of the Navy
Introduction of Sponsor	<b>Mr. Lewis</b>
Christening	<b>Mrs. John H. Chafee</b>



*Silversides* (SSN679) is the 10th of 12 Sturgeon-class submarines to be built by Electric Boat Division of General Dynamics. Her sister ships *Batfish* and *Cavalla* are under construction on nearby ways. She is 300 feet long, will displace 4,200 tons, and will be powered by a water-cooled nuclear reactor. She will be crewed by 12 officers and 95 enlisted men.

*Silversides* is named after a World War II submarine (SS236) which sailed on her first patrol four months after the attack on Pearl Harbor. By the end of the war she had sent 23 Japanese ships to the bottom, and was credited with sinking or damaging 221,113 tons of enemy ships. She ranks third among United States submarines in number of ships sunk and fifth in tonnage sunk. For action in the Pacific she was awarded the Presidential Unit Citation. *Silversides* was decommissioned in June 1969, after serving since 1946 as a training submarine for the Chicago Naval Reserve.



## SILVERSIDES

Named for the gleaming, silvery lateral stripe which graces its sides, the tiny but numerous silversides travel in immense, closely packed schools which are often seen flashing through coastal waters in temperate and tropical seas. North American waters boast a dozen species of silversides (family *Atherinidae*). Although these fish may range in length from 2 inches to 2 feet, the 3-inch reef silversides found in warm Atlantic waters is typical.





THE LAUNCHING

OF SILVERSIDES . . .

. . . is not only a ceremony for an individual ship, but an acknowledgment of the achievement she represents. When *Silversides* is commissioned next year, she will be the 100<sup>th</sup> ship in the nuclear-powered underseas fleet.

*Silversides* belongs to the fourth generation of nuclear-powered attack submarines. The ships of these four classes have, by sheer technological superiority, maintained an equilibrium of defensive power with the many more numerous submarines of other nations. Each new class has been an advance in capability — an advance made possible by maturing technology, made necessary by the growth of other submarine fleets.

In the same brief period the Navy also developed our 41 Fleet Ballistic Missile submarines. These ships, whose ability for prolonged concealment depends on nuclear power, have grown progressively more important as a major element in this country's deterrent force.

Other attack submarines in this shipyard will join the fleet after *Silversides*, and tomorrow the keel for the Navy's "quiet" submarine, the *Glenard P. Lipscomb*, will be laid. The launching of the 100<sup>th</sup> nuclear submarine represents not merely a milestone in numbers, but salutes the extraordinary success of the Navy and private industry in mastering nuclear marine technology.

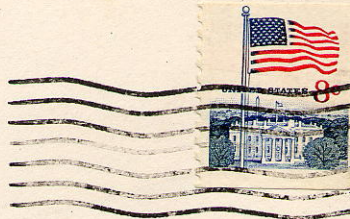
At Electric Boat Division of General Dynamics, where the first nuclear submarine, *USS Nautilus*, was built — and since then more than a third of the Navy's entire nuclear submarine force — we are especially proud of *Silversides*, the 100<sup>th</sup> nuclear submarine of the United States Navy's underseas fleet.



GENERAL DYNAMICS



Sponsor:  
Mrs. John H. Chaffe



# LAUNCHING USS SILVERSIDES

SSN 679



GENERAL DYNAMICS ELECTRIC BOAT DIVISION GROTON, CONN.

USS NATHAN HALE CHAPTER #68 U.S.C.S.

188-MADE  
G. NATHAN HALE