

DEPARTMENT OF THE NAVY  
PROSPECTIVE COMMANDING OFFICER  
PARCHE (SSN 683)  
SUPERVISOR OF SHIPBUILDING, USN  
PASCAGOULA, MS 39567

OFFICIAL BUSINESS

PENALTY FOR PRIVATE USE \$300



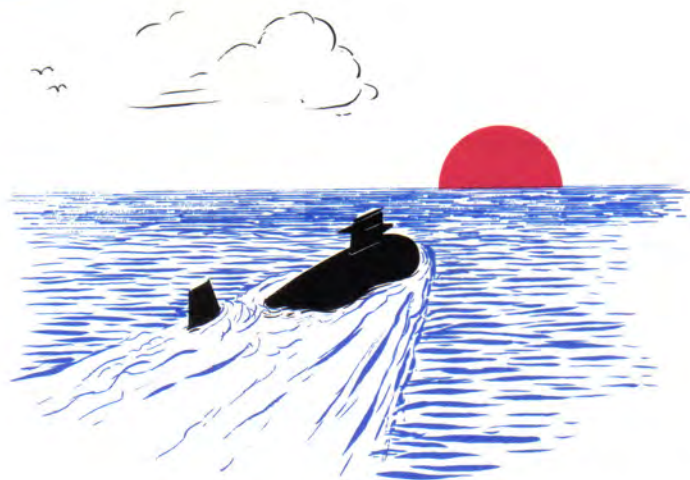
POSTAGE AND FEES PAID  
DEPARTMENT OF THE NAVY  
DOD-516



*The Prospective Commanding Officer, Officers, and Crew  
request the honor of your presence  
at the commissioning of  
United States Ship PARCHE (SSN 683)  
at Ingalls Shipbuilding Division  
Pascagoula, Mississippi  
on Saturday the 17 of August  
at one-thirty P. M.*

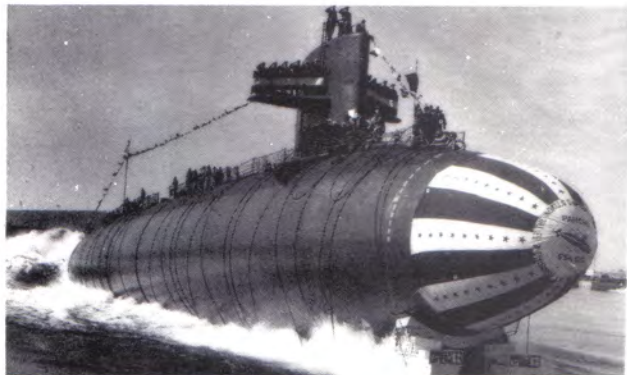
*Uniform  
Participants—Full Dress White  
Guests—Service Dress White*

# COMMISSIONING



**AUGUST 17, 1974**

## SUBMARINES NAMED PARCHE



The first submarine named PARCHE was built at the Portsmouth Naval Shipyard, Portsmouth, New Hampshire. PARCHE (SS 384) was launched on 24 July 1943 under the Sponsorship of Betty Russell and commissioned on 20 November 1943. USS PARCHE (SS 384) was first commanded by Lieutenant Commander Lawson P. Ramage, USN, PARCHE earned five battle stars and the Presidential Unit Citation for combat operations during World War II. PARCHE was used in the 1946 Atomic Bomb tests in the Marshall Islands. After surviving two atomic bomb tests she was decommissioned. In 1948 PARCHE was reactivated and placed in service as a Naval Reserve Training Submarine and continued such duty until the proud name of PARCHE was temporarily stricken from the Naval Vessel Register on 8 November 1969.

The nuclear powered submarine USS PARCHE (SSN 683) was built by Ingalls Nuclear Shipbuilding Division of Litton Industries, Pascagoula, Mississippi. Her keel was laid on December 10, 1970 and she was launched under the sponsorship of Mrs. Philip A. Beshany. Pictured above is PARCHE (SSN 683) at her launching on 13 January 1973. PARCHE will assume duties with Submarine Squadron Four, Charleston, South Carolina following commissioning.



# COMMISSIONING

## INVOCATION

Lieutenant Commander Carl Herndon, CHC, USNR-R  
United Methodist Campus Minister, Auburn University

## WELCOMING REMARKS AND INTRODUCTION OF BUILDER'S REPRESENTATIVE

Captain Cabell S. Davis, Jr., USN  
Supervisor of Shipbuilding, Conversion and Repair, Pascagoula

## BUILDER'S REMARKS

Mr. Ned J. Marandino,  
President, Ingalls Shipbuilding Division

## INTRODUCTION OF COMMANDER, SUBMARINE GROUP SIX

Captain Cabell S. Davis, Jr., USN

## REMARKS AND READING OF THE COMMISSIONING DIRECTIVE

Rear Admiral Albert L. Kelln, USN  
Commander, Submarine Group Six

## HOISTING OF THE ENSIGN, UNION JACK, AND COMMISSIONING PENNANT

## NATIONAL ANTHEM

Sixth Naval District Band





# PROGRAM



## ASSUMPTION OF COMMAND AND SETTING OF THE WATCH

Commander Richard N. Charles, USN

## RENDERING OF HONORS

## REMARKS BY THE COMMANDING OFFICER

Commander Richard N. Charles, USN

## INTRODUCTION OF PRINCIPAL SPEAKER

Captain Albert J. Baciocco, USN

Commander, Submarine Squadron Four

## ADDRESS

The Honorable Robert C. McEwen

United States Representative from the State of New York

## BENEDICTION

Lieutenant Commander Carl Herndon, CHC, USNR-R

## DEPARTURE OF OFFICIAL PARTY

## PARCHE'S SPONSOR AND MATRON OF HONOR

### SPONSOR

Mrs. Philip A. Beshany, wife of VADM Philip A. Beshany, Commander, U.S. Taiwan Defense Commander.



### MATRON OF HONOR

Mrs. Natalie B. Braniff, daughter of VADM and Mrs. Philip A. Beshany currently residing in the Washington D.C. area.



Congressman Robert C. McEwen (R-N.Y.)

## PRINCIPAL SPEAKER

Robert C. McEwen, Republican, was born in Ogdensburg, New York, January 5, 1920. He received his early education in the Ogdensburg public schools, and was graduated from Mount Hermon School, Mount Herman, Massachusetts, in 1938. He attended the University of Vermont and the Wharton School of Finance and Commerce of the University of Pennsylvania, was graduated from the Albany Law School in 1947, and received an LL.D. degree from St. Lawrence University in 1967.

He is a member of the law firm of O'Connell, McEwen and DuPré with offices in Ogdensburg.

Representative McEwen is a veteran of World War II, having enlisted in the U.S. Army in 1942, and was discharged as a sergeant in 1946.

He was elected to the New York State Senate in a special election, January 5, 1954, to fill a vacancy caused by the resignation of the late Paul D. Graves. He served for 11 years as a member of that body until elected to the 89th Congress in the 1964 general election to succeed the Honorable Clarence E. Kilburn who retired after serving 25 years as a member of the House of Representatives. He was re-elected to the 90th Congress in 1966, the 91st Congress in 1968, the 92nd Congress in 1970 and the 93rd Congress in 1972. He is a member of the House Committee on Appropriations and its Subcommittee on Military Construction and the District of Columbia.

The Congressman serves as a member of the American delegation to the Canada-United States Interparliamentary Group. He is also a member of the National Visitor Facilities Advisory Commission.

Mr. McEwen is married to the former Anita Sharples of Ogdensburg. They have two daughters, Nancy and Mary, and reside at Route 2, Ogdensburg.



# COMMANDING OFFICER – RICHARD N. CHARLES



Commander Richard N. Charles, the son of Mr. and Mrs. Reg. F. Charles, was born in Detroit, Michigan, on 20 November 1933.

After graduation from Berkley High School, Berkley, Michigan, Commander Charles attended Wayne University in Detroit, Michigan before entering the U.S. Naval Academy in Annapolis, Maryland. Following graduation in June 1957, he reported to the USS CAMBRIA (APA-36) in Norfolk, Virginia where he served as a deck division officer until June 1958.

Commander Charles commenced his submarine career in June 1958 with entry into the U.S. Naval Submarine School, Groton, Connecticut for six months of submarine training. Upon graduation, he reported to USS CUSK (SS 348) for duty as Communicator and Assistant Engineer Officer. In October 1960, he departed CUSK for one year of Nuclear Power Training at Mare Island, California and Idaho Falls, Idaho. After attending Bettis Atomic Power Laboratory in Pittsburgh, Pennsylvania, he reported to his first nuclear power submarine, the USS JOHN MARSHALL (SSBN 611) in new construction, Newport News, Virginia. After serving in all Engineering Department Division Officer billets and completing new construction and three deterrent patrols on MARSHALL, Commander Charles reported to USS

KAMEHAMEHA (SSBN 642) in August 1964, then under construction at Mare Island, California, for duty as Engineer Officer. After construction and one deterrent patrol on KAMEHAMEHA, Commander Charles reported, in February 1967 via Prospective Commanding Officer School, to USS BARB (SSN 596) as Executive Officer. After two and one-half years on BARB including several deployments and a nineteen month overhaul, Commander Charles reported in November 1969 to the Staff of Commander Submarine Force, U.S. Pacific Fleet. After two and one-half years as Force Nuclear Power Training and Readiness Officer on the Staff, he attended Prospective Commanding Officer School in the Pacific Fleet and at the Division of Naval Reactors, Washington D.C. In October 1972, he reported to the Supervisor of Shipbuilding, Conversion and Repair, Pascagoula, Mississippi as Prospective Commanding Officer of PARCHE (SSN 683).

Commander Charles has been awarded the Vietnam Service Medal with two stars, National Defense Service Medal with one star, Navy Expeditionary Medal, Navy Achievement, and Navy Commendation Medals. He is married to the former Miss Janice Ann Curry of Pittston, Pennsylvania. The Charles' have four daughters, Richelle, Kendra, Kimberly and Nicole.







Executive Officer  
C. R. MAC VEAN  
CDR, USN

## PARCHE OFFICERS



Navigator  
P. W. ISAACS  
LCDR, USN



Engineer  
W. R. JOA  
LCDR, USN



Operations  
J. C. RENWICK  
LT, USN



Main Propulsion  
Assistant  
M. R. KEVAN  
LT, USN



Damage Control  
Assistant  
J. M. RENFROE  
LT, USN



Weapons  
W. S. GARRETT  
LT, USN



Assistant Engineer  
C. B. REIGNER  
LT, USN



Electrical/Reactor  
Control  
S. W. LURIE  
LTJG, USNR



Communicator  
T. W. TRICKEY  
LTJG, USNR



Sonar  
J. E. FOGG  
ENS, USNR



Supply  
E. T. BARTYZAL  
CW03, (SC), USN



Former Communicator  
L. J. BRENNER  
LT, USN

# PARCHE CHIEF PETTY OFFICERS



Chief Petty Officer  
of the Command  
ICC(SS)  
N. L. SMITH



ETCM(SS)  
R. L. LITSCHER



TMCS(SS)  
M. W. LUDDEN



STCS(SS)  
R. E. WITTE



MMCS(SS)  
M. C. HUNKER



MMCS(SS)  
B. C. KAHL



RMC(SS)  
E. L. EIKEN



HMC(SS)  
R. T. BROWN



ETC(SS)  
M. E. KAUFMANN



QMC(SS)  
J. H. MOORE, JR.



MMC(SS)  
G. T. PAYNE



MMC(SS)  
K. I. JELLEY



MMC(SS)  
N. R. ROMANO

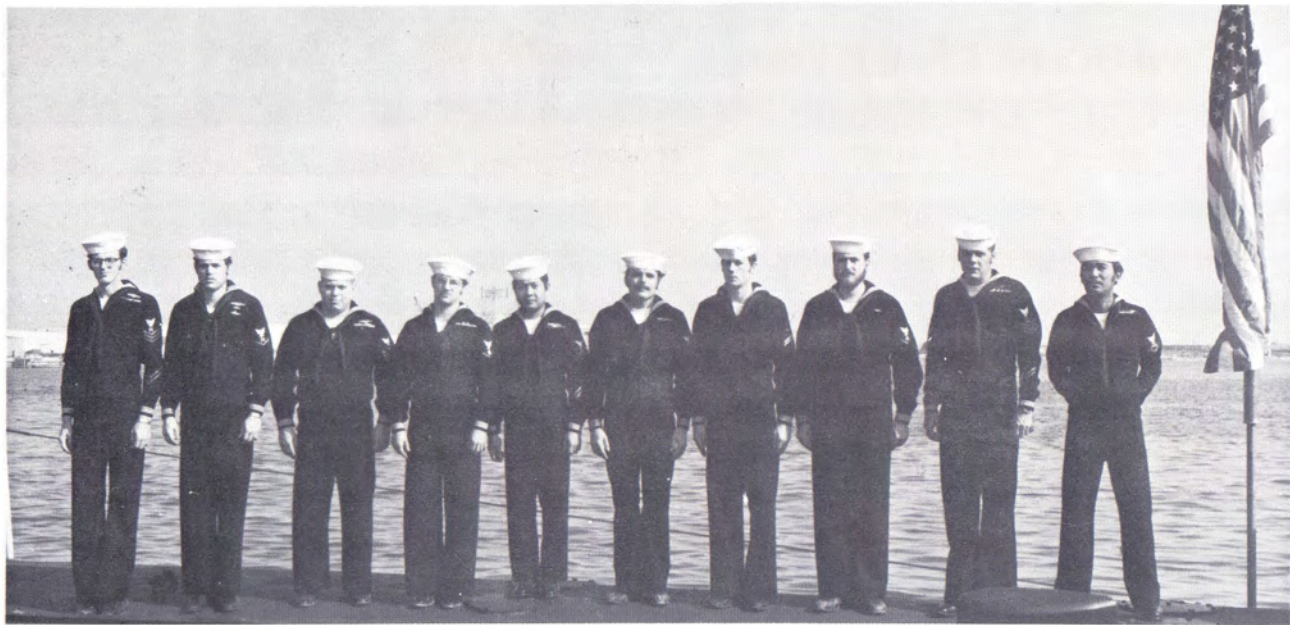


MMC(SS)  
C. E. GREGORY



EMCS(SS)  
O. A. HOLBERT, JR.

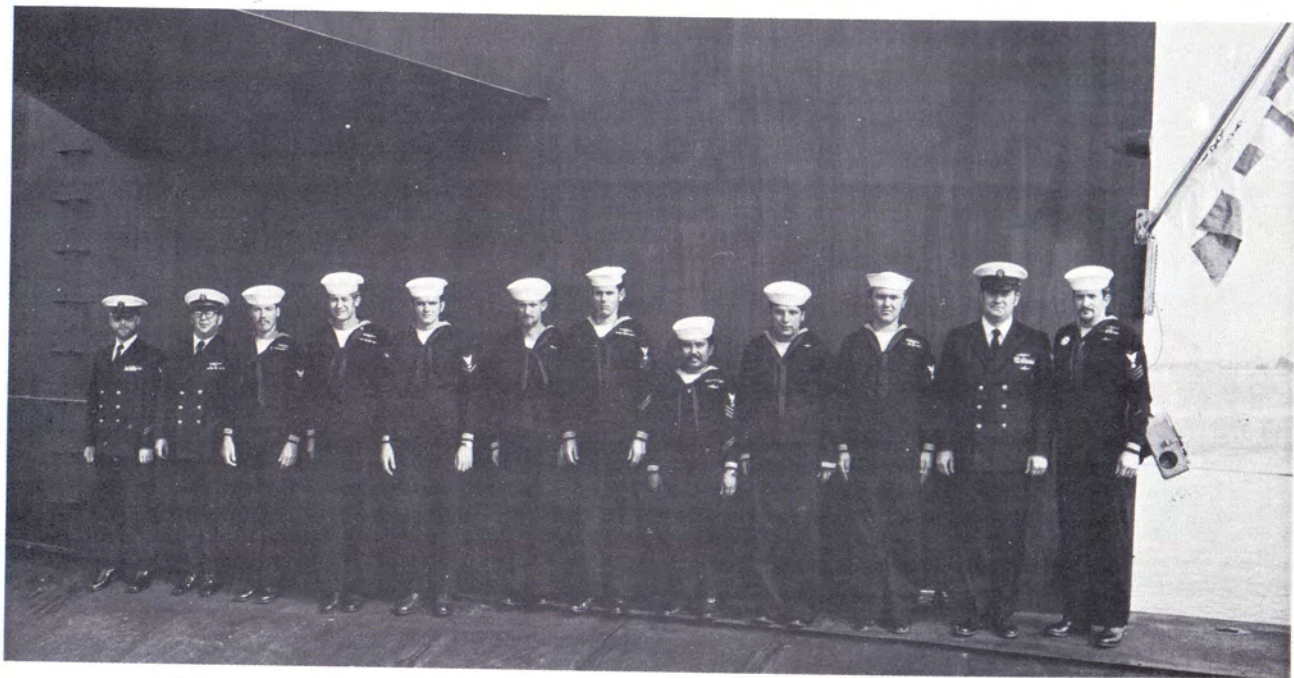
## EXECUTIVE AND SUPPLY PERSONNEL



NAVIGATION/OPERATIONS PERSONNEL (L to R) ET1 J. O. Sturges, ET1(SS) K. M. Hall, ET2N(SS) W. A. Bebinger, ETR3 T. E. Schneider, ETR2 J. P. Hodge, RM1(SS) R. R. Gallagher, ET1(SS) D. M. Padua, SN H. E. Clawson, QM2(SS) L. M. Bays, QM1(SS) M. R. Porter, QM1(SS) W. V. Cook. Absent: RM2(SS) R. F. Schive, ETN2 M. C. Phillips, Sr.



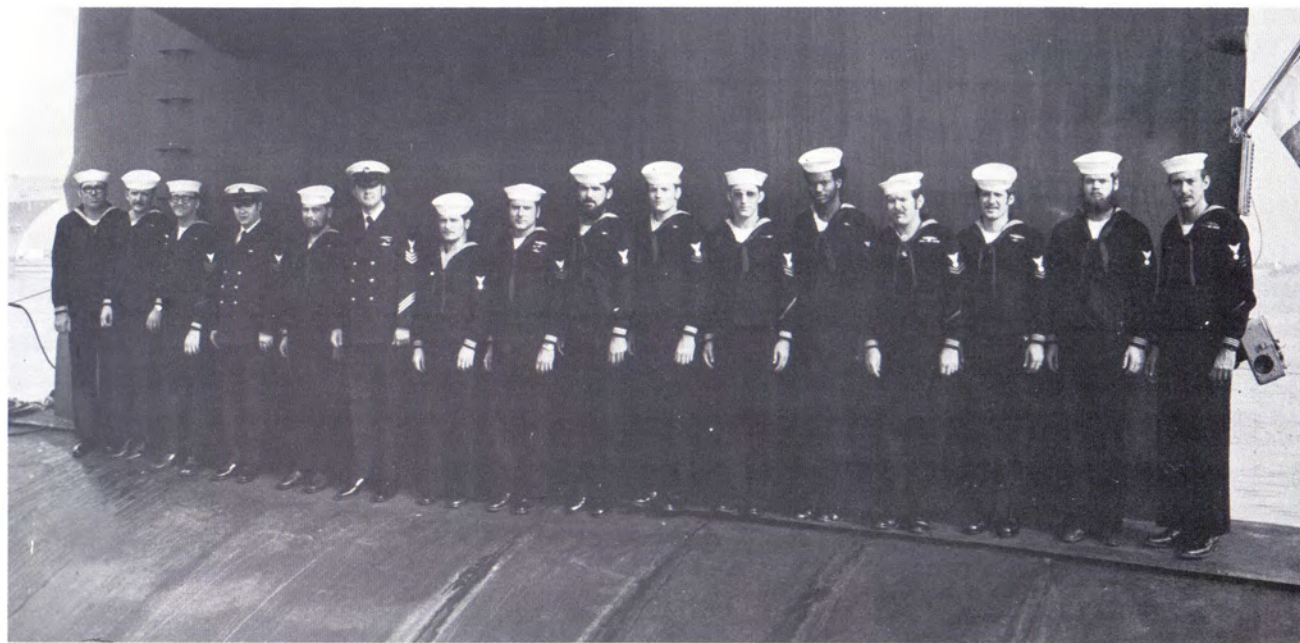
# NAVIGATION AND OPERATIONS PERSONNEL



EXECUTIVE AND SUPPLY PERSONNEL (L to R) SK1(SS) R. A. Salter, SK3(SS) J. A. Strafford, YN1(SS) J. D. Gosnell, PN3 R. D. Ruser, SD2(SS) A. A. Capitan, CS2(SS) C. M. Rohloff, CSSN T. L. Klimer, SK3 D. R. Miller, CS1(SS) W. S. Searles, Jr., SD3 D. S. Medina. Absent: CS3 S. M. Miller, SDSA B. A. Monahan.



## ENGINEERING PERSONNEL ELECTRICAL/REACTOR CONTROL DIVISION



ENGINEERING PERSONNEL ELECTRICAL/REACTOR CONTROL DIVISION (L to R) ET1(SS) J. L. Parchman, ETR1 G. T. Duncan, ET1 W. T. Roberson, Jr., ETR2 L. J. Smith, ETR3 L. D. Titus, Jr., EM1(SS) R. A. Wallace, EM2 J. R. Cole, ETR2(SS) J. Ditoro, EM2 J. M. Byko, EM2 J. C. Messer, EM1 J. P. Dooloukas, EM3 E. Dilsorth, EM2(SS) N. W. Selvogg, EM2(SS) E. F. Jackson, Jr., EM3 K. A. Bowden, EM1(SS) W. F. Grafer. Absent: ETR3 A. Bridge.

## ENGINEERING PERSONNEL AUXILIARY INTERIOR COMMUNICATIONS DIVISION

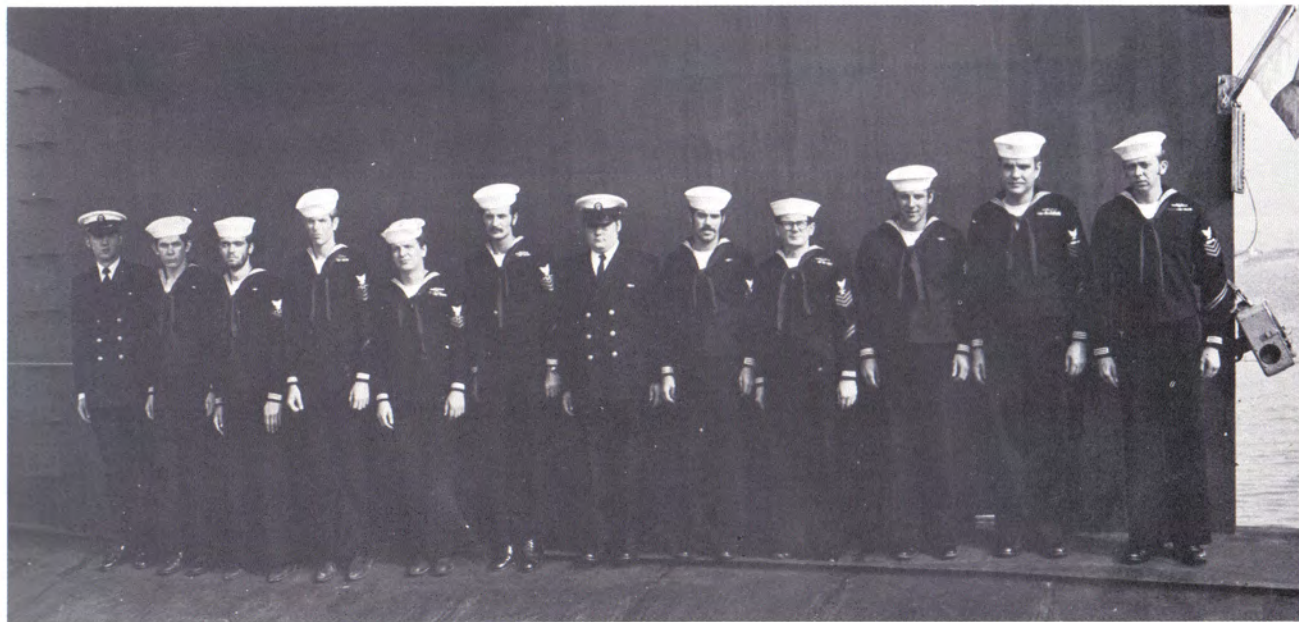


ENGINEERING PERSONNEL AUXILIARY/INTERIOR COMMUNICATIONS DIVISION (L to R) MM1(SS) F. A. Crow, IC3(SS) E. M. Moore, IC1(SS) I. H. Peterson, MM1(SS) R. A. Rose, IC3(SS) J. M. Brown, MM2(SS) L. Chavez, MM3 P. E. Dunlap, MM3 D. K. McGlothen, MM1(SS) C. Vincent, MM1(SS) A. Rodvill, M1(SS) G. T. Albrecht. Absent: IC2(SS) E. F. Villanueva.



# WEAPONS PERSONNEL

## TORPEDOMAN/SONAR/FIRE CONTROL DIVISION



WEAPONS PERSONNEL TORPEDOMAN/SONAR/FIRE CONTROL DIVISIONS (L to R) STSSN W. G. Varney, STS2 D. E. Cole, STS2 L. E. Barton, ST1(SS) W. G. Bailey, ST1(SS) J. J. Bennett, ST1(SS) W. E. Doerfler, FTG2(SS) C. R. Cottrell, FTG1(SS) R. P. Baughan, SN R. F. Culbreath, TM1(SS) R. D. Cool, TM1(SS) R. D. Wilson. Absent: ST1(SS) R. C. La Duke, STS2 D. E. Lott, STS2 B. C. Nelson, STS2 C. P. Sutton, STS2 J. R. Van Splunder, FTG1(SS) T. E. Hubbard, FTG2 M. A. Corass, FTG2 A. E. Lauiland, TM1(SS) C. E. Watkins, TM2(SS) G. M. Burns, TM2(SS) R. L. Hontz.