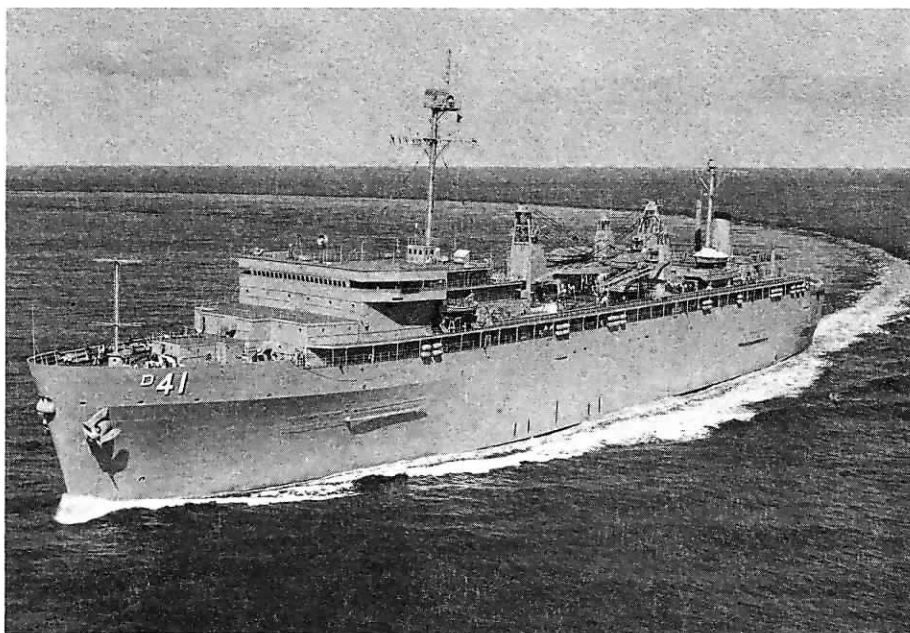
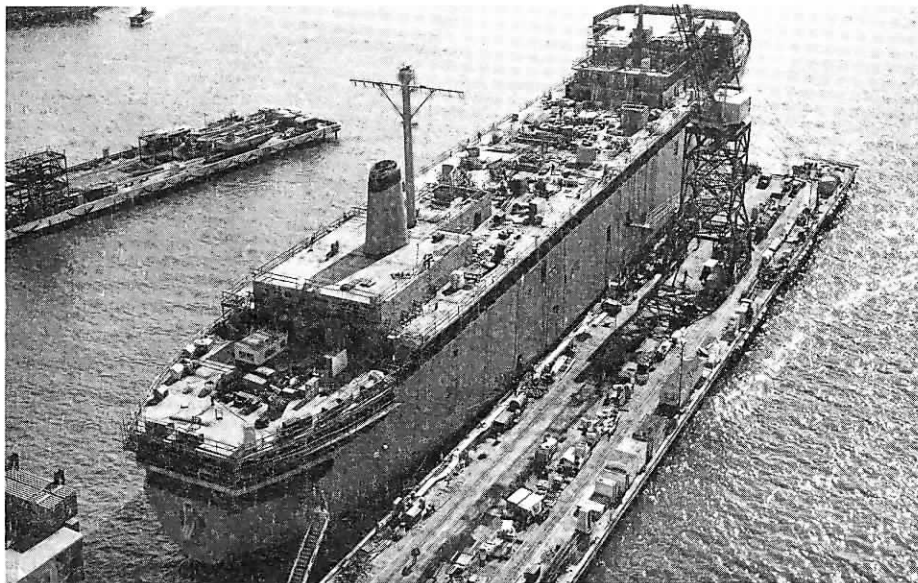


# WELCOME ABOARD



## USS YELLOWSTONE AD-41

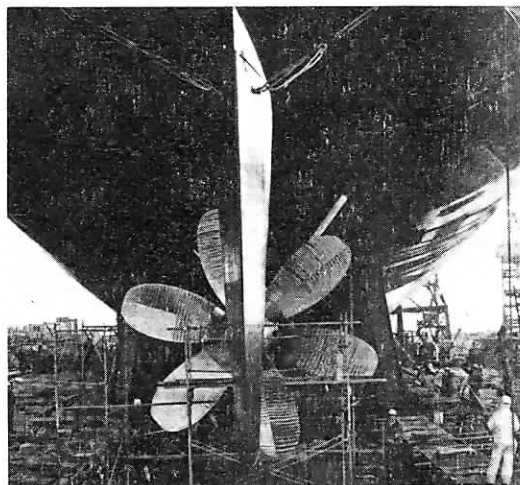




Propulsion:

Two 600# Steam Boilers  
20,000 Total Shaft Horsepower  
Single Propellor  
Single Rudder

Maximum Speed: 20+ knots



Keel Laid: 2 June 1977  
Christened: 27 January 1979

Sponsor: Elaine Margaret Davis,  
wife of ADM Donald C. Davis,  
CINCPACFLT

Named after Yellowstone National Park

1st YELLOWSTONE: AD 115, converted  
commercial ship  
during WWI

2nd YELLOWSTONE: AD 27, launched in  
1945 decommissioned  
in 1975

**Complement:**

Officers: 36  
Enlisted: 1,075  
Potential: 1,595

**Aircraft:** None aboard; helicopter landing deck

**Armament:** Two 40mm grenade launchers  
Two 20mm guns

Built by National Steel and Shipbuilding Company, San Diego, California

Length: 641' 10" Draft: 24'  
Beam: 85' Displacement: 21,916 tons



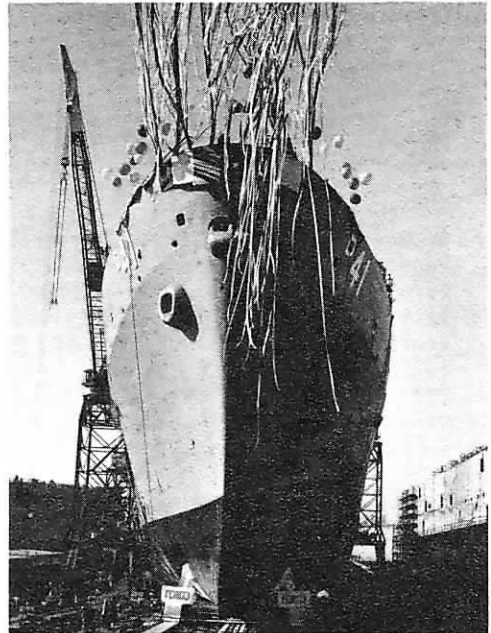
**Samuel Gompers Class**

**DESTROYER  
TENDER**

**USS YELLOWSTONE**

**Capabilities:**

- \* Provide general repair services to all classes of ships
- \* Largest of tenders
- \* 3 anchors - 40,000 lbs each
- \* Over 900 spaces, 1/2 of which are workshops
- \* Two 30 ton & two 50 ton cranes
- \* Specially equipped to provide repair and supply services to gas turbine and nuclear powered cruisers, destroyers, and frigates with advanced missile, antisubmarine, and electronic equipment.





## CAPTAIN JOHN R. CAMPBELL

Captain Campbell was reared in Los Angeles, California and was graduated from John Brown University, Siloam Springs, Arkansas in 1956 receiving a Bachelor of Science Degree in Mechanical Engineering. Earning his commission at Officer's Candidate School, Captain Campbell served at sea in USS PRICHETT (DD 561), USS TOPEKA (CLG 8), on the staff of Commander Destroyer Squadron TWENTY-ONE, in USS WABASH (AOR 5), USS BOSTON (CA 69), and USS CORAL SEA (CV 43). He commanded USS NAVASOTA (AO 106) in 1973-75. Tours ashore included assignments with the Naval Postgraduate School, Pacific Missile Range, Long Beach Naval Shipyard, and the Pacific Fleet Propulsion Examining Board.

Captain Campbell has been awarded two Navy Commendation Medals, a Navy Achievement Medal with Combat "V", a Navy Unit Commendation and has earned the following Campaign and Service Medals: Battle Efficiency "E", Combat Action Ribbon, National Defense Medal, Navy Expeditionary Medal (Qemoy-Matsu), Vietnam Service Medal (sixth award), Expert Rifle Medal, Expert Pistol Medal, and the Republic of Vietnam Campaign Medal.

Captain Campbell is married to the former Mary West of Grand Rapids, Michigan. They have three daughters, Diana, Sandra, and Julia born in 1958, 1960, and 1966, respectively.

# WELCOME

## FROM THE CAPTAIN

The Officers and men of USS YELLOWSTONE are pleased to welcome you aboard the Navy's newest and most modern Destroyer Tender.

YELLOWSTONE is a SAMUEL GOMPERS (AD 37) class tender, the first to be built in over ten years. She is a unit of the U.S. Atlantic Fleet, being the second of her class and one of six destroyer tenders presently serving the Atlantic Fleet. By 1983, the Navy expects to have taken delivery on four new ships of this class, all built by National Steel and Shipbuilding Corporation in San Diego, California.

The destroyer tender is a one-stop support base for warships of the fleet. While ships cannot be supported alongside while underway, an anchorage - anywhere in the world - is all that is required to establish a capable, sophisticated base for operating ships to obtain repairs and logistic support.

YELLOWSTONE joins a large number of other specialized ships such as fleet oilers, ammunition ships, etc., whose sole purpose is to provide mobile logistics support to ships of the fleet. YELLOWSTONE is capable of supporting up to eight ships alongside at one time with everything from steam and electric power to medical and dental facilities, quarters, and laundry services, plus a great deal more. She is equipped to replace propellers on ships while afloat, exchange gas turbine engines, service nuclear power plants, and conduct a multitude of repairs to machinery, hull, and weapons systems. About half of the 1,000 man crew is committed to repair services to other ships, the other half being needed to maintain our own ship. For such a large ship she is quite responsive in a seaway and a distinct pleasure to live aboard. She has already earned a reputation for high morale of her crew.

Please feel free to ask any crewmember for directions or information while you are onboard. We want your visit to be rewarding and informative and we will be most happy to assist you in any way we can.

# A New Faithful

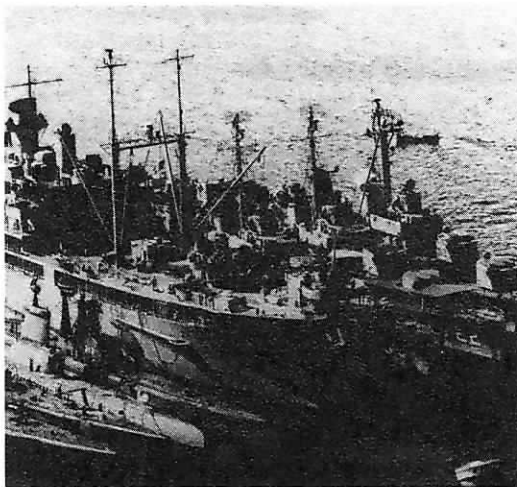
The YELLOWSTONE is a magician's hat of capabilities--a veritable factory in a ship's hull. Ready and able to tend the needs of any type ship, her support is primarily to Spruance (DD 963) class destroyers and Oliver Hazard Perry (FFG 7) class frigates and nuclear powered cruisers (CGN's).

Many of these ships have modular jet-engine type gas turbine propulsion systems. In case servicing is indicated, one of YELLOWSTONE's four cranes will lift the entire unit out through the stack. If the strength of these four tremendous workhorses could be harnessed together, they could lift a weight equivalent to eighty automobiles.

Other customer ships will vary in size and characteristics, ranging from 150 ft. patrol boats to 600 ft. cruisers. She can simultaneously service up to eight ships in a nest--four on each side as in the tradition of her predecessor, YELLOWSTONE (AD 27). Thirteen workboats and small craft will carry personnel and transfer material to nearby ships.

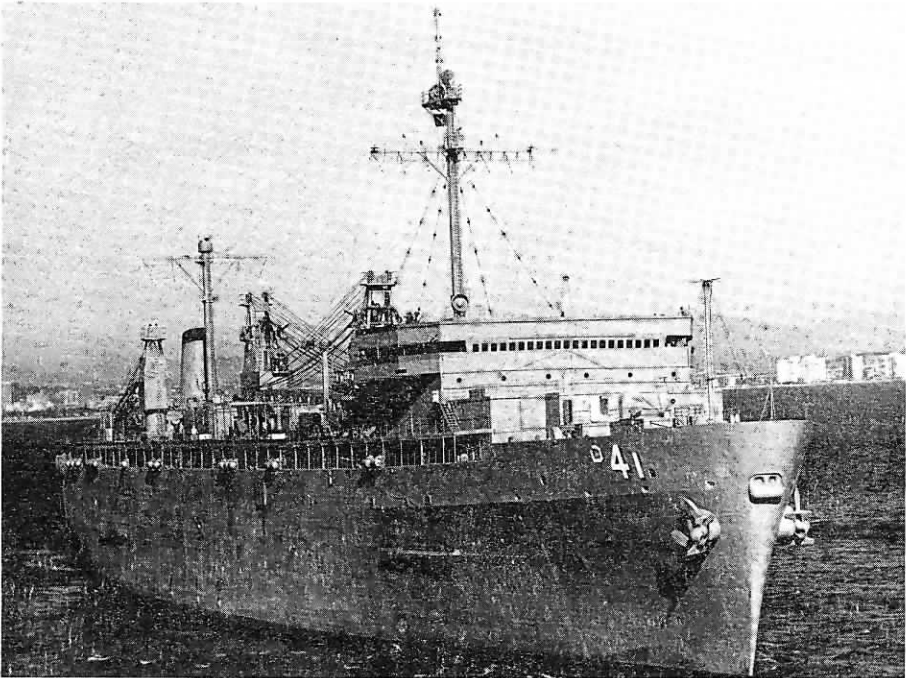
Her capability knows no limit: repair of nuclear weaponry, movie splicing, artful engraving, optical grinding, or thread-and-needle on sail cloth and canvas. The diversity of work which ships bring to a tender runs the gamut from calibration of delicate instruments to prompt manufacture of immediately necessary unavailable parts. YELLOWSTONE fills the bill, whether it means simply drawing ammunition from the shelves of her storeroom, or crafting a part in shops like her foundry--itself large enough to cast a replica of the Liberty Bell.

YELLOWSTONE's divers bind the link between ship and sea. They scout and service underwater, enabling YELLOWSTONE to accomplish tasks within her own element. Perhaps someday she will be called upon to replace the propellor of a ship at sea, a mammoth feat her namesake did twice handily.



Those who come in need not only will have their problems fixed, but their creature comforts tended to as well. Because machinery of ships alongside may be under repair, AD 41 is fitted with extra electrical generators and water distilling capacity, providing vital electricity, steam feed, and fresh water. Space is available for seventy-five visiting crew to dine and bunk aboard YELLOWSTONE, or even set up temporary administration or training facilities. Every human contingency can be met whether it be the walk-in ship's store for at-sea shopping, or a comprehensive medical clinic staffed to handle even emergency surgeries.





Everyday life on YELLOWSTONE rewards production with comfort. Her crew enjoys lounges, libraries, and recreation rooms in living areas. Human factors are paramount in design and function, right down to the ship's hundreds of loaves-a-day bakery, and two ice cream bars.

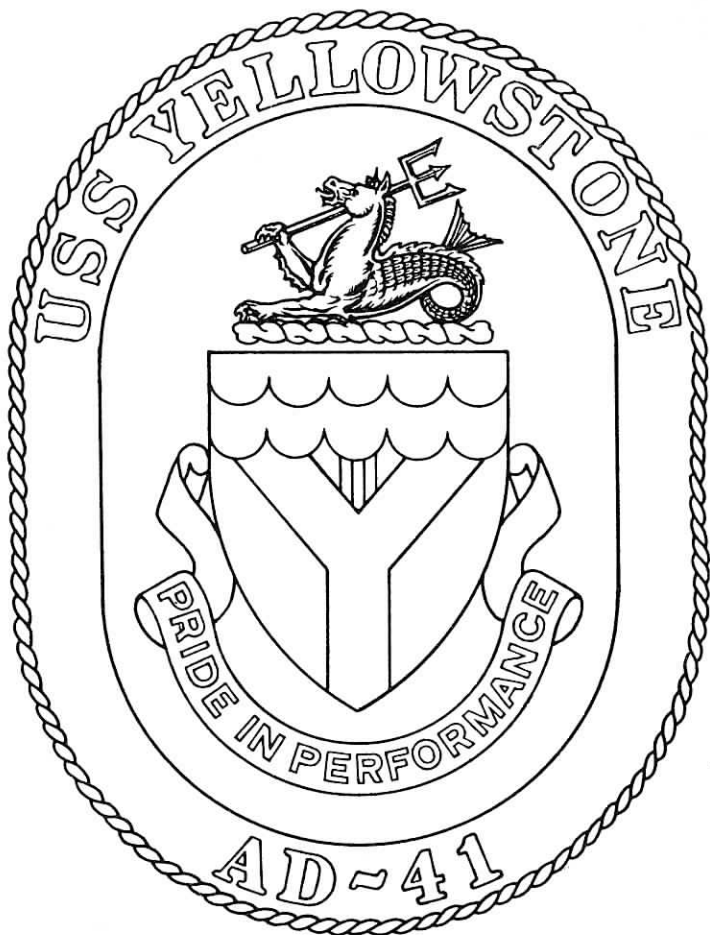
AD 41 will not only tend to the needs of others, but is designed as a "self-maintenance" ship as well, caring for her own maintenance between five-year overhaul cycles.

An ever-buzzing 200-line telephone network coordinates the ship's work centers. In touch with two satellites to keep pulse on what's needed where and when, YELLOWSTONE's communications system also serves the special needs of a Group Commander and his staff of over one hundred when embarked.

To track with watchdog attention the thousands of jobs being done daily on board YELLOWSTONE has its own computer. Operating 7 days a week, 24 hours a day, it can track the status of every job simultaneously, constantly advising and updating information for the fleet ships that depend on her.

Normally YELLOWSTONE tends from her Norfolk, Virginia homeport. But since mobility is a vital necessity to support the U.S. Navy's worldwide commitments, the ship may be steamed anywhere in the world where her services may be required.

Boasting skill, equipment, and know-how, YELLOWSTONE produces small miracles in "Old Faithful" fashion. Her repair personnel are her hands and soul. She's a Jack of all trades and good at every one of them.



SHIELD:

The USS YELLOWSTONE, a new destroyer tender, inherits the name and traditions of two former ships. They earned the sobriquet "Old Faithful" for their long and dedicated service to the fleet. The geyser containment, a Y-shaped heraldic charge called a pall, is symbolic of support. The color red is for heat and energy. The vertical bands and the scalloped white and blue cloud forms are indicative of the upward surge of steam and water, in allusion to the famous geyser "Old Faithful".

CREST:

The sea horse is symbolic of the basic mission of the destroyer tender, the furnishing of supplies and services to the fleet. The trident is symbolic of naval power and authority. The head of the trident suggests the letter "E", the coveted battle efficiency "E", which the second USS YELLOWSTONE earned ten times.

PHOTO CREDITS

Cover: National Steel and Shipbuilding Company  
Page 1 NASSCO, Page 2 top US Navy, bottom NASSCO,  
Page 3 USN, Page 5 top USN, bottom USN, Page 6 NASSCO,