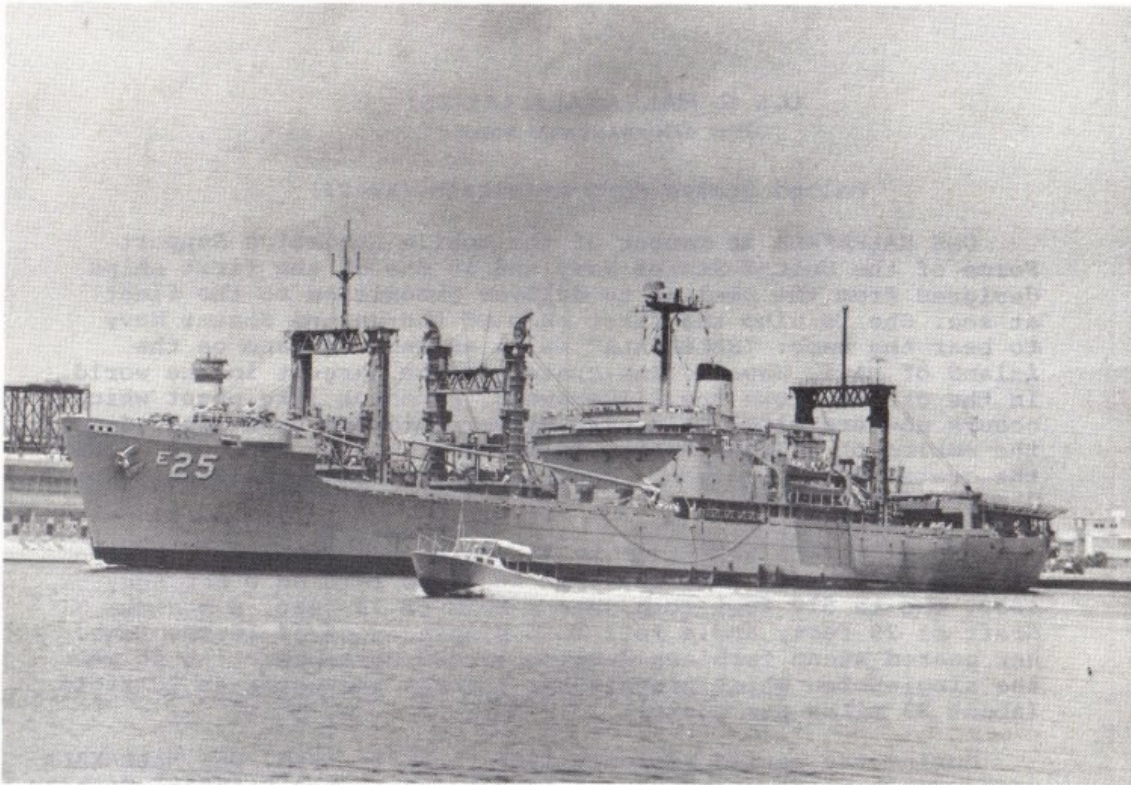


WELCOME ABOARD



USS HALEAKALA



AE-25

United States Ship Haleakala (AE-25)

U. S. S. HALEAKALA (AE-25)

FPO. SAN FRANCISCO 96601

United States Ship Haleakala (AE-25)

USS HALEAKALA is member of the Mobile Logistics Support Force of the United States Navy and is one of the first ships designed from the keel up to deliver ammunition to the fleet at sea. She is also the first ship of the United States Navy to bear the name. "HALEAKALA" is an extinct volcano on the island of Maui, Hawaii. Its crater is the largest in the world. In the crater grows the Silversword, a cactus like plant which occurs nowhere else. This rare Silversword has been adopted as the emblem of USS HALEAKALA. In our insignia it is shown within the crater of the volcano. The word HALEAKALA translated means "house of the suns".

USS HALEAKALA was built by the Bethlehem Steel Corporation at Sparrows Point, Maryland. Her keel was laid on 3 February 1959. She is 512 feet long, has a beam of 73 feet, a maximum draft of 29 feet, and a full load displacement of 16,000 tons. Her geared steam turbines develop 12,500 horsepower, to drive the single screw which propels her through the water at 20 knots (about 23 miles per hour).

During the period February 1964 to April 1965, USS HALEAKALA underwent a major overhaul and conversion to the Standard Tension Replenishment Alongside Method at Sea (STREAM) System. The STREAM System enables HALEAKALA safely to transfer at sea, at high rate of speed, guided missiles and other ordinance used by the aircraft and ships of the United States Navy. To preserve and protect the vast arsenal of munitions beneath her decks, an environmental control system has been installed which also provides her more than 300 crew members with complete air-conditioning.

Located on the stern is the helicopter platform upon which HALEAKALA can land, refuel and launch helicopters. These are used to conduct vertical replenishment of cargo and passengers between ships at sea.

USS HALEAKALA has ten replenishment stations. From them, she transfers ammunition, fuel, water, freight, mail, and passengers underway at high speeds, with a ship on each side. At the same time, she can land, load, and launch helicopters with other cargo or passengers for ships out of sight over the horizon.

The USS HALEAKALA carries the following awards: National Defense, Vietnam Service with Gold Star, Vietnam Campaign, Meritorious Unit Citation.



Commander Michael Andrew Kubishen
United States Navy

Michael Andrew KUBISHEN was born in New York City on 1 September 1938. He attended Columbia College in New York City. He was graduated in 1960 and received his commission through the NROTC Program. He was promoted to his present rank of Commander on 1 September 1975.

His initial sea duty in 1962 was to the ROBERT L. WILSON (DDE-847), Engineering Department followed by assignment to Naval Destroyer School (Class 3) in 1962. From March 1963 to January 1965 he served on the USS MASSEY (DD-778) as Engineer Officer.

In February 1965, he reported to the USS WILKINSON (DL-5) and served as Engineer Officer. In September 1966 he reported to the NROTC Unit Rochester University as an Instructor of Naval Science. He joined the Pre-Commissioning Crew of the USS ALBANY (CG-10) in June 1968 and served as Engineer Officer until July 1970.

After temporary assignment to NRTC, Cheyenne, Wyoming he reported to Naval Postgraduate School in February 1971. He graduated in June 1973 with a Bachelor of Science in Electrical Engineering. In September 1973 he reported to the USS JOHN F. KENNEDY (CV-67) and served as Damage Control Assistant until October 1975. He became Executive Officer of the USS SEATTLE (AOE-3) in January 1976. He left Norfolk in June 1977 to take command of the USS HALEAKACA (AE-25).

Commander KUBISHEN's personal decorations and awards include the Navy Commendation Medal and National Defense Service Medal.

He is married to the former Sara M. KEEFE of New Rochelle, New York. They have three children: Ruth Anne, Elizabeth Christine and Laura Catherine.