

Contributed by Robert Hurst



General Edwin D. Patrick (originally commissioned as Admiral C.F. Hughes)

Design Type: P2-SE2-R1

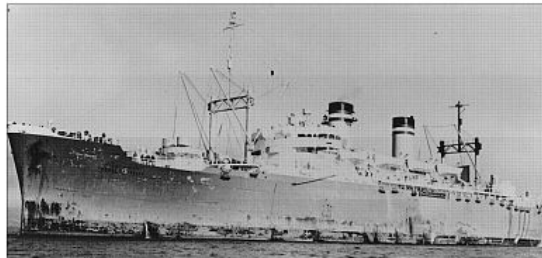
Official Number: AP-124

MC-682

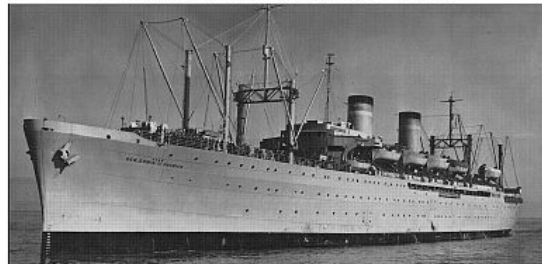


PRINCIPLE CHARACTERISTICS

BUILDER: BETHLEHEM-ALAMEDA SHIPYARD, INC.
BUILT: 1943
LOA: 608'-11"
BEAM: 75'-6"
DRAFT: 26'-6"
SPEED: 19 KNOTS
PROPULSION: TWO GENERAL ELECTRIC TURBO-ELECTRIC ENGINE, 18,00-SHAFT HORSEPOWER TWIN PROPELLER
TONNAGE: 15,969 TONS (GROSS) 12,637 TONS (NET)
DISPLACEMENT: 20,120 TONS (FULL LOAD) 10,000 TONS (LIGHTWEIGHT)
COMPLEMENT: 32 OFFICERS 324 ENLISTED
ARMAMENT: 4 SINGLE 5"/38 DUAL PURPOSE GUNS 4 TWIN 40MM ANTI-AIRCRAFT GUNS 16 TWIN 20MM ANTI-AIRCRAFT GUNS



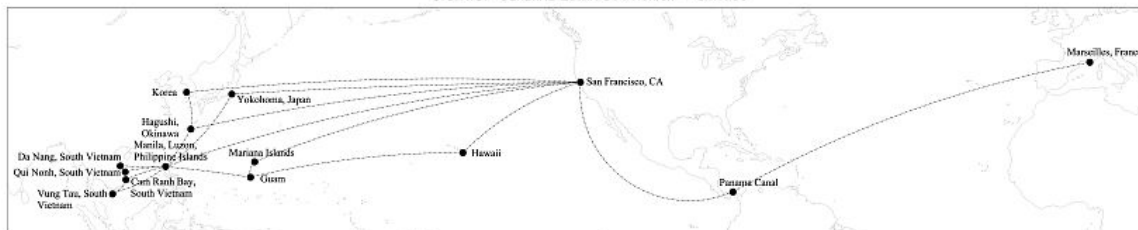
U.S. ARMY TRANSPORT ADMIRAL C.F. HUGHES - CA.1946



U.S.N.S. "GENERAL EDWIN D. PATRICK" - CA.1950

WHEN THE UNITED STATES ENTERED WORLD WAR II, THE U.S. MARITIME COMMISSION GAVE TOP PRIORITY TOWARDS BUILDING TRANSPORTS. LATE IN 1941, VICE ADMIRAL HOWARD L. VICKERY DECIDED THAT TWO YARDS SHOULD BUILD 20 LARGE TRANSPORTS. BETHLEHEM-ALAMEDA WOULD BUILD TEN P2-SE2-R1 SHIPS AND FEDERAL SHIPBUILDING AND DRY DOCK WOULD BUILD TEN P2-S2-R2 SHIPS, BUT BETHLEHEM-ALAMEDA ONLY COMPLETED EIGHT TRANSPORTS. THESE TWO TYPES OF TRANSPORTS WOULD BE THE LARGEST SHIPS PRODUCED BY THE MARITIME COMMISSION DURING THE WAR. GENERAL EDWIN D. PATRICK IS THE SOLE REMAINING SHIP AFLOAT IN ITS CLASS AND REMAINS NOTABLE FOR HER LONGEVITY AS A TROOPSHIP, PARTICIPATING IN BOTH THE KOREAN AND VIETNAM WAR.

THE PROJECT WAS PREPARED UNDER THE DIRECTION OF TODD CROTEAU (HAER MARITIME PROGRAM COORDINATOR). JONATHAN DOWSETT & ASHLEY T. WALKER (HAER CONTRACT ARCHITECTS) GENERATED VESSEL DRAWINGS. BRIAN GROGAN (HAER CONTRACT PHOTOGRAPHER) CREATED LARGE FORMAT PHOTOGRAPHS. A SPECIAL THANKS TO ERHARD KOEHLER (U.S. MARITIME ADMINISTRATION) WHOSE HELP AND ASSISTANCE GREATLY BENEFITED OUR PROJECT

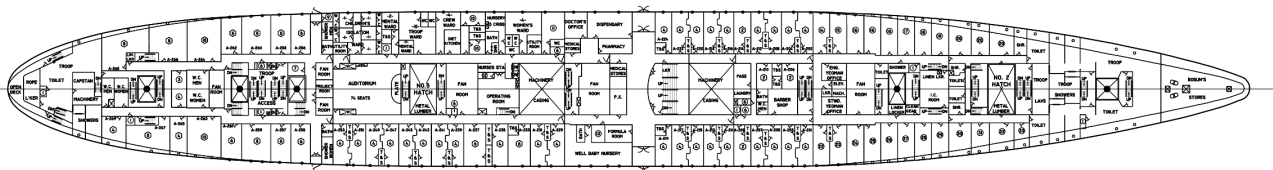


NOTE: COURSES SHOWN ON MAP ARE ABSTRACTED TO CONNECT LOCATIONS. THEY DO NOT REPRESENT THE EXACT COURSES TRAVELED.

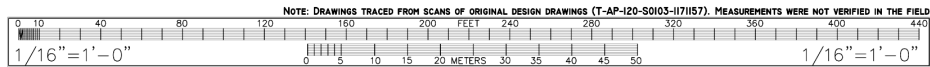
GENERAL EDWIN D. PATRICK, ADMIRAL C.F. HUGHES
 CALIFORNIA 1 of 1
 SEARCHED FROM HISTORICAL DOCUMENTS AND REPRINTED BY APPLICABLE 1. PALMARD 1999
 UNITED STATES MARITIME ADMINISTRATION
 BENICIA, CALIFORNIA

Contributed by Robert Hurst

General Edwin D. Patrick



A DECK



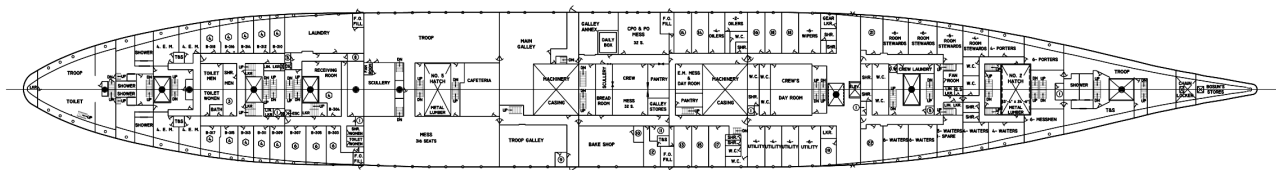
SCHEDULE OF ROOMS & FEATURES OF VESSEL

NO.	NAME/ TITLE	NO.	NAME/ TITLE	NO.	NAME/ TITLE	NO.	NAME/ TITLE
1	CLEANING GEAR	8	NO. 6 HATCH	15	1- PLUMBER 1- DECK ENGINEER 1- YEOMAN 1- SPARE	22	2- SECOND STEWARDS
2	NO. 8 HATCH	9	HEATER ROOM	16	3- ELECTRICAL 1- SPARE	23	2- THIRD STEWARDS 1- STRKR 1- YEOMAN
3	SHOWER MEN	10	2- ISOLATION WARD	17	3- ASSISTANT PLUMBERS 1- SPARE	24	2- TROOP STEWARDS 1- LINEN MAN 1- SPARE
4	SHOWER WOMEN	11	2- CHILDREN'S WARD	18	3- FREEZERS 1- SPARE	25	1- CHIEF BUTCHER 1- CHIEF PANTRY 1- ASSISTANT SHIP COOK 1- SHIPS COOK
5	NO. 7 HATCH	12	AUTOCLAVE	19	1- PUMPMAN 2- STRKPRS 1- SPARE	26	2- THIRD ARMY COOKS 2- SECOND ARMY COOKS
6	LINEN LOCKER	13	BOTTLE WASH ROOM	20	3- OILERS 1- SPARE	27	3- ASSISTANT STKPRS 1- ASSISTANT LINEN MAN
7	SERVICE PANTRY	14	1- CHIEF... 2- MACHINERY 1- SPARE	21	NO. 3 HATCH NO COVERS	28	2- SECOND BUTCHERS 3- THIRD BUTCHERS
						29	2- THIRD PANTRY 3- SECOND PANTRY
						30	2- THIRD PANTRY 2- GALLEYMEN
						31	4- GALLEYMEN
						32	2- JANITORS 2- GALLEYMEN
						33	2- NIGHT WATCHMEN
						34	NO. 1 HATCH NO COVERS

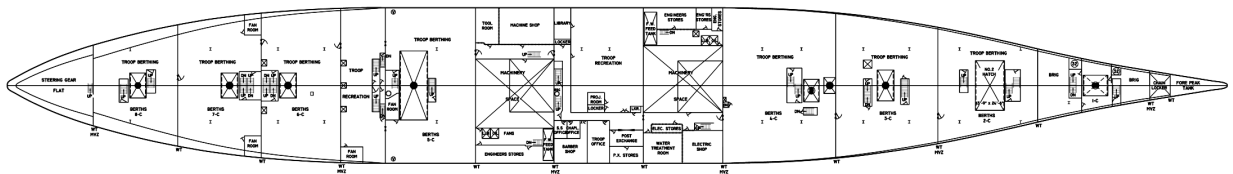


- REPRESENTS NUMBER OF OCCUPANTS IN SPACE

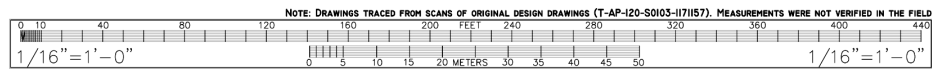
General Edwin D. Patrick



"B" DECK



"C" DECK



SCHEDULE OF ROOMS & FEATURES OF VESSEL

NO.	NAME/ TITLE	NO.	NAME/ TITLE	NO.	NAME/ TITLE	NO.	NAME/ TITLE	NO.	NAME/ TITLE
1	CLEANING GEAR LOCKER	7	BAGGAGE ROOM	13	4 - SECOND COOKS	19	DECK YEOMAN OFFICE	25	NO. 8 HATCH 7'-6" x 12'-0"
2	NO. 8 HATCH TRUNKED NO COVERS	8	LAUNDRY LOCKER	14	3- WATER TENDERS 1- SPARE	20	NO. 4 HATCH 7'-0" x 11'-0"	26	NO. 7 HATCH 7'-6" x 12'-0"
3	SHOWER WOMEN	9	GARBAGE CHUTE	15	1- THIRD BAKER 2- THIRD COOKS 1- CHIEF ARMY COOK	21	3- ROOM STEWARDS 2- DECK STEWARDS 1- UTILITY	27	NO. 6 HATCH 7'-6" x 12'-0"
4	NO. 7 HATCH TRUNKED NO COVERS	10	FLOUR ROOM	16	5- UTILITY 1- SPARE	22	5- WAITERS 1- SPARE	28	NO. 5 HATCH 13'-0" x 34'-0"
5	SLOP SINK	11	CHIEF COOKS OFFICE	17	3- SECOND BAKERS 1- THIRD BAKER	23	NO. 3 HATCH 7'-6" x 15'-0"	29	NO. 4 HATCH 7'-0" x 11'-0"
6	NO. 6 HATCH TRUNKED NO COVERS	12	CHIEF COOK CHIEF BAKER	18	3- FIREMEN 1- SPARE	24	NO. 1 HATCH 10'-0" x 11'-0"	30	ELEVATOR SHAFT
								31	NO. 3 HATCH 7'-6" x 15'-0"
								32	RAISED PLATE
								33	NO. 1 HATCH 10'-0" x 11'-6"

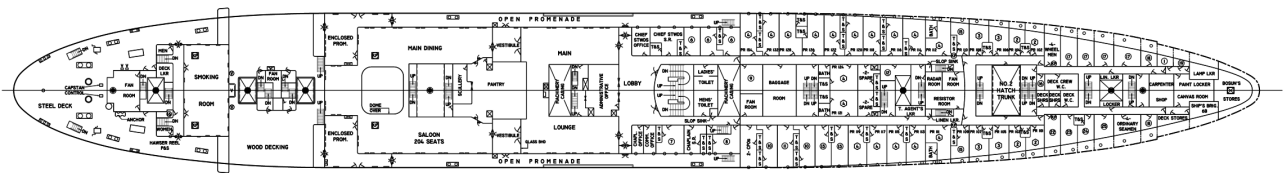
◻ - REPRESENTS NUMBER OF OCCUPANTS IN SPACE

USER SERVICE RECORDS SECTION NATIONAL PARK SERVICE UNITED STATES DEPARTMENT OF THE INTERIOR	GENERAL EDWIN D. PATRICK (ADMIRAL C.F. HUGHES) SUBGAT NAVY RESERVE ALERT SOLAND COUNTY	SHEET 7 OF 8	HISTORIC AMERICAN ENGINEERING RECORDS CA-544
--	--	-----------------	--

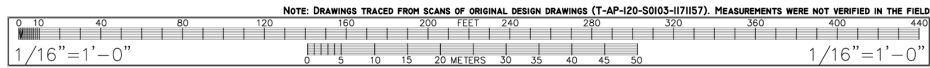


SCHEDULE OF ROOMS & FEATURES OF VESSEL									
NO.	NAME/ TITLE	NO.	NAME/ TITLE	NO.	NAME/ TITLE	NO.	NAME/ TITLE	NO.	NAME/ TITLE
1	NO. 8 HATCH OVER	2	NO. 7 HATCH OVER	3	NO. 6 HATCH OVER	4	NO. 4 HATCH 7'-0" x 11'-0"	5	NO. 1 HATCH 11'-6" x 10'-0"

General Edwin D. Patrick



PROMENADE DECK



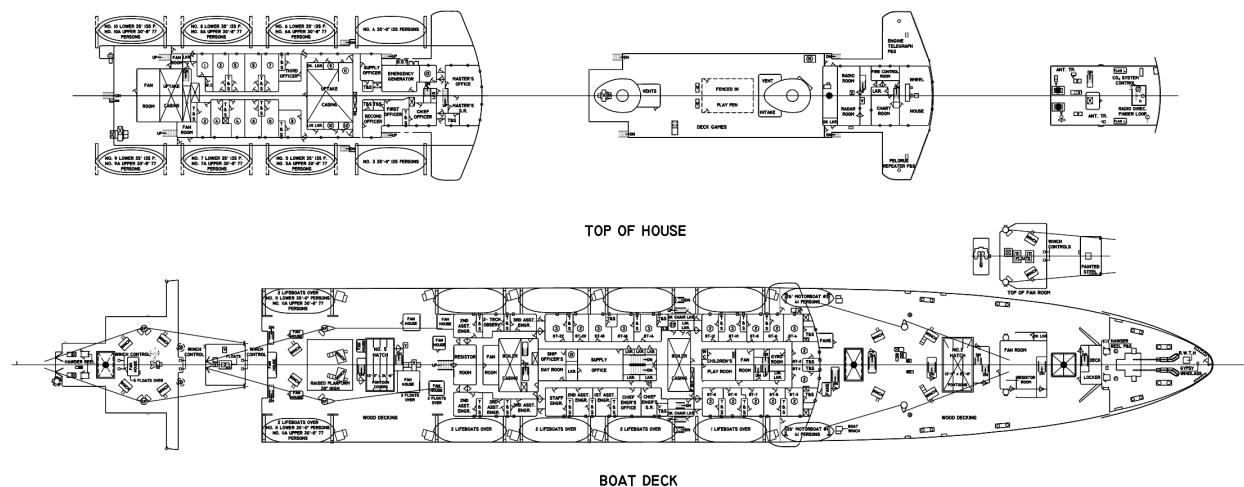
SCHEDULE OF ROOMS & FEATURES OF VESSEL

NO.	NAME/ TITLE	NO.	NAME/ TITLE	NO.	NAME/ TITLE	NO.	NAME/ TITLE	NO.	NAME/ TITLE
1	RESISTOR ROOM	6	2- ADMINISTRATIVE CLERKS	11	1- EXECUTIVE OFFICER 1- SPARE	16	CLEANING GEAR LOCKER	21	CREW LAUNDRY
2	NO. 8 HATCH 7'-6" x 12'-0"	7	MILITARY DEPARTMENT COMMANDER STATEROOM	12	PASSENGER LAUNDRY	17	4- A.B. SEAMEN	22	4- MASTER-AT-ARMS
3	NO. 7 HATCH 7'-6" x 12'-0"	8	ADMINISTRATIVE OFFICER S.R.	13	1- NURSE 1- SPARE	18	2- A.B. SEAMEN	23	BOSUN'S MATE CARPENTER'S MATE 2-SPARE
4	NO. 6 HATCH 7'-6" x 12'-0"	9	TELEPHONE CONTROL ROOM	14	NO. 3 HATCH 7'-6" x 13'-0"	19	DECK LOCKER	14	BOSUN'S CARPENTER
5	NO. 5 HATCH 13'-0" x 24'-6"	10	1- SURGEON 1- SPARE	15	1- STEWARDESS 1- SPARE	20	NO. 1 HATCH (NO COVER)	25	1- YEOMAN 1- STRKPR 1- SPARE



- REPRESENTS NUMBER OF OCCUPANTS IN SPACE

General Edwin D. Patrick



NOTE: DRAWINGS TRACED FROM SCANS OF ORIGINAL DESIGN DRAWINGS (T-AP-120-S0103-1171157). MEASUREMENTS WERE NOT VERIFIED IN THE FIELD

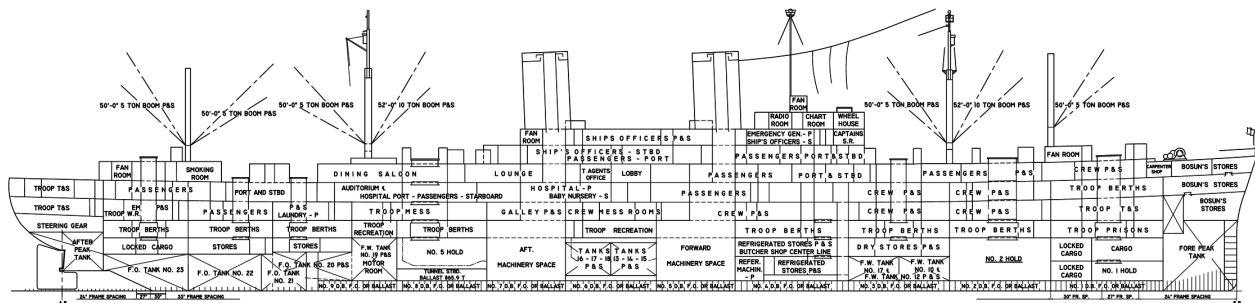
0 10 20 30 40 50 60 70 80 90 100 110 120 130 140 150 160 170 180 190 200 210 220 230 240 250 260 270 280 290 300 310 320 330 340 350 360 370 380 390 400 410 420 430 440 450 460 470 480 490 500

1/16" = 1'-0"

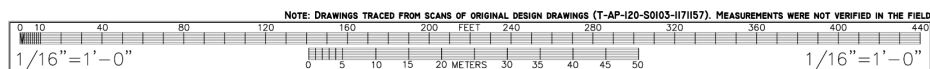
SCHEDULE OF ROOMS & FEATURES OF VESSEL									
NO.	NAME/ TITLE	NO.	NAME/ TITLE	NO.	NAME/ TITLE	NO.	NAME/ TITLE	NO.	NAME/ TITLE
1	PILOT'S ROOM	6	2- RADAR OPERATORS	11	FIRE FIGHTING EQUIPMENT LOCKER	16	4- FLOATS	21	PANTRY
2	CHIEF ELECTRICAL ENGINEER	7	2- JUNIOR THIRD OFFICERS	12	PORTFOLIO LOCKER	17	RAISED PLATE	22	SLOP SINK
3	2- JUNIOR THIRD ENGINEERS	8	CHIEF RADIO OPERATOR	13	CAPTAIN'S PANTRY	18	NO. 1 HATCH 11'-6" x 10'-0" PONTONS		
4	2- JUNIOR ENGINEERS	9	O.S. LOCKER	14	BATTERY ROOM	19	NO. 3 HATCH 7'-0" x 15'-0"		
5	1- JUNIOR THIRD ENGINEER 1- SPARE	10	CLEANING GEAR LOCKER	15	LYLE GUN	20	7'-6" x 11'-0" METAL LUMBER		

◻ - REPRESENTS NUMBER OF OCCUPANTS IN SPACE

General Edwin D. Patrick



INBOARD PROFILE



The diagram illustrates the hull structure of a ship, showing the hull plating, stiffeners, and various structural components. The diagram is labeled with various parts and dimensions, including 'HULL PLATING', 'STIFFENERS', 'HULL STRENGTH', and 'HULL STIFFNESS'. It also includes a scale bar at the bottom indicating '100' and '100'.

NOTE: DRAWINGS TRACED FROM SCANS OF ORIGINAL DESIGN DRAWINGS (FAIRED LINES PLAN NO. 9501-II-9). MEASUREMENTS WERE NOT VERIFIED IN THE FIELD.

1/16" = 1' - 0"

0 5 10 15 20 25 30 35 40 45 50 METERS

1/16" = 1' - 0"

GENERAL EDWIN D. PATRICK (ADMIRAL C.F. HUGHES)		SHEET	WESTERN AMERICAN CALIFORNIA
GENERAL EDWIN D. PATRICK (ADMIRAL C.F. HUGHES)		8 of 8	CA-344
UNITED STATES DEPARTMENT OF THE INTERIOR BUREAU OF LAND MANAGEMENT DENVER, COLORADO		CALIFORNIA	
GENERAL EDWIN D. PATRICK (ADMIRAL C.F. HUGHES)		CALIFORNIA	
UNITED STATES DEPARTMENT OF THE INTERIOR BUREAU OF LAND MANAGEMENT DENVER, COLORADO		CALIFORNIA	