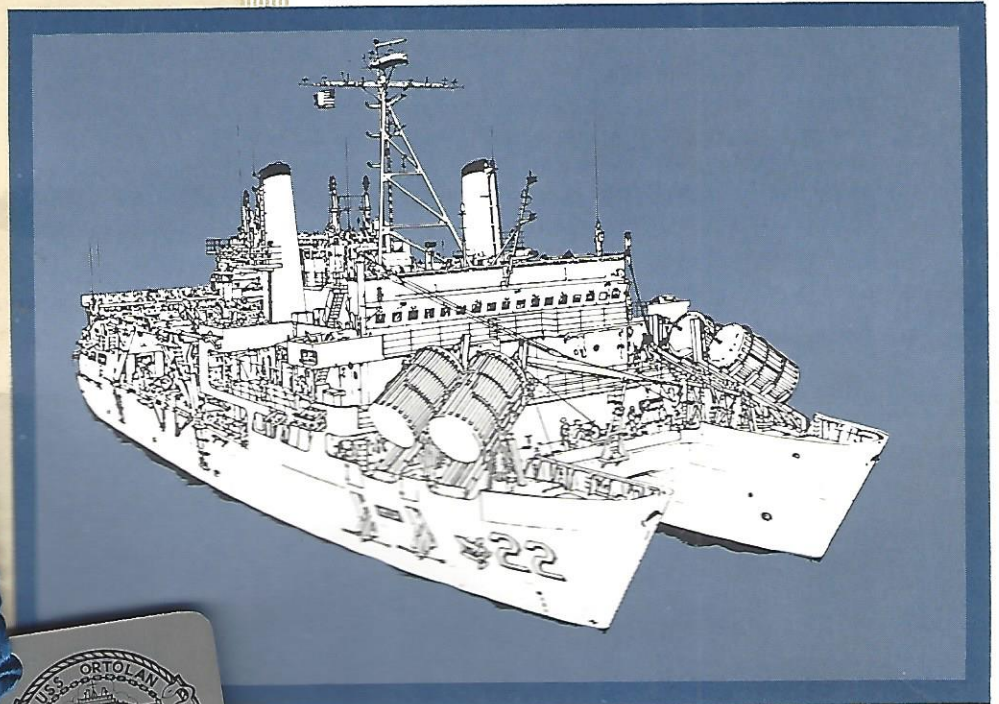


Contributed by Joe Neumann

COMMISSIONING CEREMONY

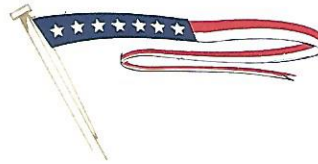


U. S. S. ORTOLAN (ASR-22)

PHILADELPHIA NAVAL SHIPYARD
14 JULY 1973

COMMISSIONING OF A NAVY SHIP

The commissioning ceremony marks the acceptance of a ship into the operating forces of the United States Navy. Two major steps will be taken during the ceremony today. First, the ship is delivered to the Commandant, Fourth Naval District, who will accept it on behalf of the Chief of Naval Operations and will then read the orders to place Ortolan in commission. The Commandant will then deliver the ship to the commanding officer, Lieutenant Commander Louis M. Tew, and order him to conduct the ceremony to place the ship in commission. Lieutenant Commander Tew will order our national flag and the commission pennant to be raised. At that moment, Ortolan will become United States Ship Ortolan and Lieutenant Commander Tew, together with the ship's officers and men, will assume the responsibility to ensure the ship's readiness for any service required by our nation.



THE COMMISSION PENNANT

The commission pennant has for centuries been the symbol of a man-of-war. It is said that when the Dutch Admiral Van Tromp defeated an English fleet in 1652, he cruised with a broom at his masthead to signify that he had swept his enemies from the sea. When the positions were reversed in the following year, the British admiral hoisted a long streamer from his masthead to represent the lash of a whip indicating that he had whipped his adversary. Thus, the narrow "coach whip" pennant has become the distinctive mark of a ship of war.

Today, when the order to commission the ship is given, the commission pennant will be broken at the gaff, located high on the mast. It will fly day and night and will be hauled down only to display the personal flag of another officer of higher rank than the commanding officer when embarked in the ship.



UNITED STATES SHIP
ORTOLAN
SUBMARINE RESCUE SHIP
TWENTY-TWO



Built by
ALABAMA DRY DOCK and SHIPBUILDING COMPANY
MOBILE, ALABAMA



KEEL LAID 28 AUGUST 1968
LAUNCHED 10 SEPTEMBER 1969

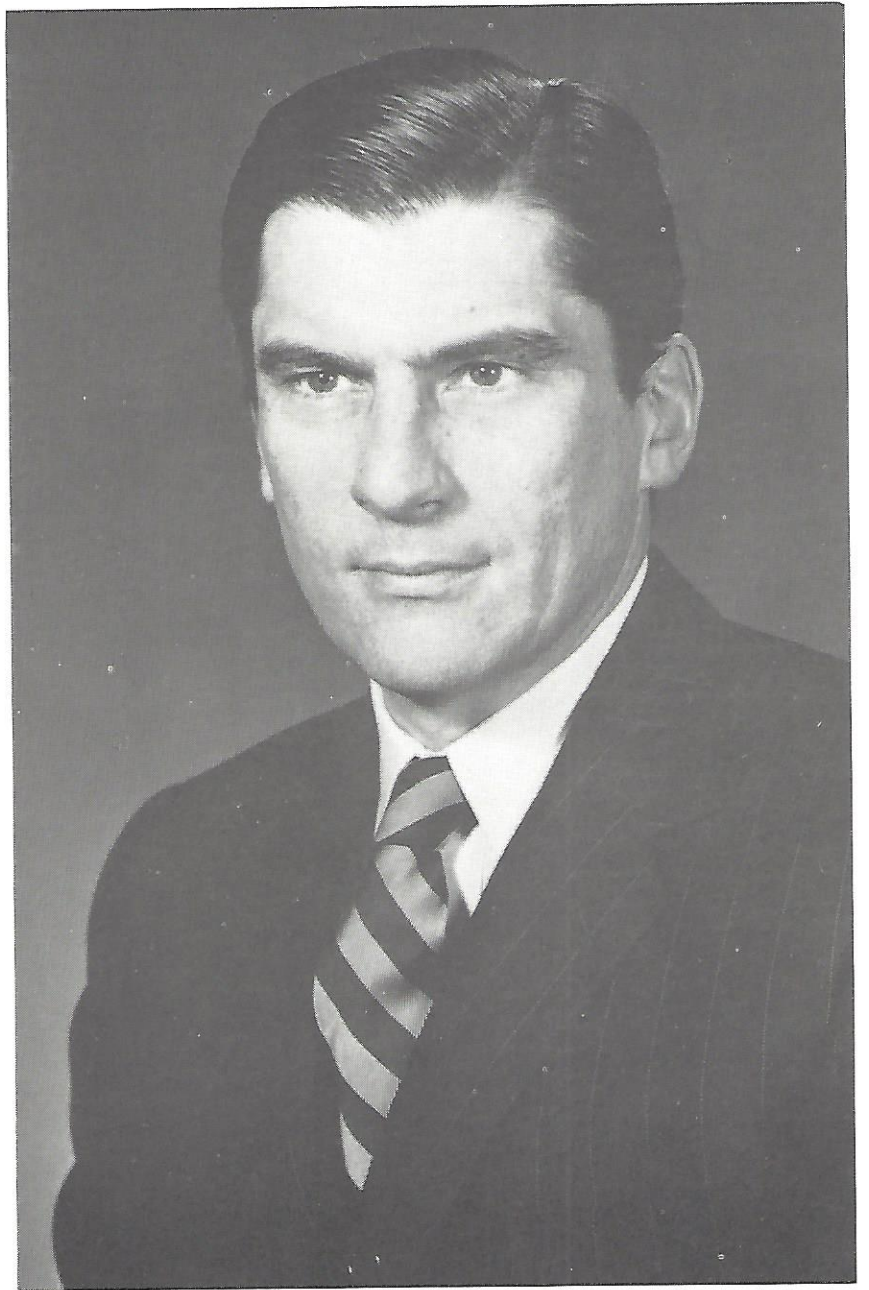


Post Delivery Availability by
PHILADELPHIA NAVAL SHIPYARD
PHILADELPHIA, PENNSYLVANIA

COMMISSIONED 14 JULY 1973



Sponsored by
MRS. NELS C. JOHNSON
wife of
Vice Admiral Nels C. Johnson, USN, Retired



The Honorable John W. Warner
Secretary of the Navy



THE SECRETARY OF THE NAVY
WASHINGTON, D. C. 20350

27 June 1973

Lieutenant Commander Louis M. Tew, USN
PCO, ORTOLAN (ASR-22)
Philadelphia Naval Shipyard
Philadelphia, Pennsylvania 19112

Dear Captain:

Congratulations on your new command and best wishes to you and to your crew on the commissioning of ORTOLAN (ASR-22).

As the first commanding officer of a new ship, you are entrusted with a unique opportunity. With your officers and petty officers, you and the men who sail with you will set ORTOLAN's tone and establish her name and reputation in the fleet. You have been given two tasks, both of great importance in our modern world. Whether preparing yourselves and your ship for submarine search and rescue operations or carrying out scientific research in the ocean's depths, you will have a vital share in maintaining America's peace-keeping power at sea.

In designing new ships such as ORTOLAN we have endeavored to continue to improve living conditions for the fine men who sail them. I know that you share this interest. Although improvements have been made over earlier designs, there is always a need for new ideas in this important area. I hope that you and your crew will continue to develop innovations in habitability improvements and forward your recommendations for consideration. I would like to receive an advance copy of any such submissions. Our men constitute our most vital asset. As we seek their finest performance, their individual and collective welfare deserves our most active interest.

The freedom of the seas, so essential to the peaceful interests of all mankind, can only be preserved and enhanced by the constant efforts of skilled and courageous seamen. I wish ORTOLAN every success in this honorable task.

Sincerely,

John W. Warner



To the Officers and Men of the USS ORTOLAN (ASR-22) with all best wishes for many successful cruises and joyous homecomings.

G.M. [Signature]
Admiral, US Navy
CNO



CHIEF OF NAVAL OPERATIONS

13 July 1973

Dear Captain:

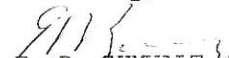
My best wishes go to you and to your ship's company on the commissioning of ORTOLAN (ASR-22).

Your new command is admirably designed to carry out her primary role of submarine search and rescue. With the deep-submergence vehicles designed to operate with her, ORTOLAN will provide an essential service to our submarine force. Her stability and maneuverability will also give her a valuable research capacity in the ocean sciences. It is fitting that a ship of ORTOLAN's capabilities carry on the tradition of two previous ships. The first ORTOLAN (AM-45, ASR-5) served capably through two peacetime decades as a submarine tender and salvage ship; during World War II she operated with distinction in the South Pacific. A second ORTOLAN (AMCU-34) took part in landings in New Guinea and the Philippines during World War II and then participated in mine-warfare development during the postwar years. You inherit a record of capable service in peace and war. I know that you will add new luster to an honorable name.

Your selection as Commanding Officer of ORTOLAN is a tribute to your past performance and attests to your ability to meet the challenge of Command, the most cherished experience of a Naval career. You know the truth of Admiral Arleigh Burke's remark that any ship is "good because of the people in her; without them, she is an inert mass of steel." Our need for highly motivated, experienced personnel has never been greater. I urge you to be keenly aware of the welfare of your men. There is no substitute for a crew who is well informed and whose talents are recognized. I encourage you to delegate responsibility down to the lowest level and in so doing develop a real sense of being part of, what I know will be, one of our Navy's finest fighting units.

On behalf of the Navy, I welcome ORTOLAN to the fleet.

Sincerely,


E. R. ZUMWALT, JR.
Admiral, U.S. Navy

Lieutenant Commander Louis M. Tew, USN
PCO, ORTOLAN (ASR-22)
Philadelphia Naval Shipyard
Philadelphia, Pennsylvania 19112



Rear Admiral Joseph L. Coleman, U. S. Navy
Commandant, Fourth Naval District



Captain Robert R. Fargo, U. S. Navy
Commander, Philadelphia Naval Shipyard



Hillel S. Levinson
Managing Director of the City of Philadelphia

PRINCIPAL SPEAKER

Hillel S. Levinson, age 36, was appointed Managing Director of the City of Philadelphia by Mayor Frank L. Rizzo on January 3, 1972.

Mr. Levinson attended Central High School and Temple University. He received his Law degree from Villanova Law School, and is admitted to practice in Pennsylvania.

USS ORTOLAN (ASR-22)

USS Ortolan (ASR-22) is the second in a new class of submarine rescue ships designed to rescue personnel from a sunken submarine at depths deeper than ever before. In order to perform this primary mission area, the ship has been designed in a manner that incorporates the latest in construction techniques, propulsion control systems and diving equipments.

Ortolan is a catamaran hull type ship, has an overall length of 251 feet, a maximum breadth of 92 feet and displaces over 4670 tons fully loaded. All offices and living spaces for the crew, officers and enlisted men are air conditioned. Ortolan has accommodations for a unit commander and his staff, which will permit the ship to function as a flagship.

Ortolan was launched on 10 September 1969 under the sponsorship of Mrs. Nels C. Johnson, wife of Vice-Admiral Nels C. Johnson. On 15 May 1972 the ship was delivered to the Philadelphia Naval Shipyard where she was commissioned on 14 July 1973.

Ortolan is the third ship of the fleet to bear the name of a type of European bunting. This bird's name, ortolan, comes from the Latin *hortulanus*, or gardener, from its habit of frequenting the hedges of gardens. Ortolan commemorates two predecessors: Ortolan (ASR-5), veteran of World War II, and Ortolan (MHC-34). The first, a mine sweeper launched in 1919, was later outfitted as a tug, and then again modified to an ASR (ASR-5). This ship was decommissioned in 1947. The second, an infantry landing craft during World War II was extensively modified, commissioned in 1953, and struck from the Navy List in 1960.

Ortolan has, in addition to the built-in stability of her catamaran configuration and the resultant expansive midship main deck area, a highly sophisticated electro-hydraulic deck handling system. This system is used in the launch and recovery of the Deep Submergence Rescue Vehicle (DSRV), the McCann Rescue Chamber (SRC) and the divers Personnel Transfer Capsules, (PTC).

The Mk 2 Mod 1 Deep Dive System consists of two identical deck decompression chambers (one per hull), two PTC's and related control and life support sub-systems. This is the most advanced dive system of its type, designed to utilize the principle of saturation diving to produce the greatest amount of effective diver work-hours in the shortest time span. The diving gas stowage capability of Ortolan permits up to two teams of four divers each to work at any depth to 850 feet for extended periods.

Ortolan has a sophisticated rescue control center consisting of 3-D integrated sonar and computer systems to aid in the rescue of

Lieutenant Commander Louis M. Tew
United States Navy

Lieutenant Commander Louis M. Tew was born in Duke, North Carolina on 9 March, 1925. Prior to enlisting in the Navy in May 1943, he attended Grantham High School, Grantham, North Carolina.

After entering the Navy, Lieutenant Commander Tew served in the Armed Guard with service in the SS Oliver Evans, SS Juan N. Sequin, SS Benjiman Holt, and SS Edward W. Book. In 1946, Lieutenant Commander Tew reported to the USS Hunnington (CL-107) where he saw duty with the peace-keeping forces in Trieste. In March 1950 he reported to the USS Tringa (ASR-16) at Key West, Florida where he commenced his career in diving and submarine rescue work. In 1954, the then BM1 Tew was assigned to recruit training in Bainbridge, Maryland. In 1957 he received the Navy League's John Paul Jones Award for leadership for his performance as a recruit company commander.

In July 1957, Lieutenant Commander Tew returned to the Diving School at Washington, D. C. for refresher training and in October 1957 reported to the USS Tringa.

After advancing to chief boatswain mate, Lieutenant Commander Tew was appointed warrant boatswain on 2 September 1958. His first assignment as warrant boatswain was aboard the USS Compass Island (EAG-153) from October 1958 to July 1960 where he served in the capacity of ship's boatswain.

Lieutenant Commander Tew's next two duty stations were the USS Skylark (ASR-20) and Naval Station, Brooklyn, New York where he served as first lieutenant and security officer respectively. He was then transferred to the USS Tringa to serve as operations officer from March 1964 to May 1966.

In June 1966, Lieutenant Commander Tew assumed the position of Executive Officer, USS Skylark and held this position until May 1968 at which time he was transferred to the USS Petrel (ASR-14). This was Lieutenant Commander Tew's first command and his tour as commanding officer was from June 1968 to June 1970. His next assignment found him on the USS Hunley (AS-31) where he was the navigator, first lieutenant and diving officer from August 1970 to September 1971.

In October 1971, Lieutenant Commander Tew reported to Mobile, Alabama as prospective commanding officer of Ortolan (ASR-22) and has spent the past 21 months supervising the construction and fitting out of the ship.

Lieutenant Commander Tew is a qualified deep sea diving officer and he was promoted to his present rank of lieutenant commander on 1 June 1968.

Lieutenant Commander Tew is married to the former Ann Kautz from Astoria, Long Island, New York and they have four children, and two grandchildren.



UNITED STATES SHIP ORTOLAN

Commissioning Ceremony



PRELUDE

Fourth Naval District Band

ARRIVAL OF THE OFFICIAL PARTY

Distinguished guests escorted to the speaker's platform after appropriate honors are rendered.

INVOCATION

Lieutenant Charles W. Bichel, CHC, U. S. Navy
Chaplain, Philadelphia Naval Support Activity

WELCOME AND INTRODUCTIONS

Captain Robert R. Fargo, U. S. Navy
Commander, Philadelphia Naval Shipyard

REMARKS AND INTRODUCTION OF PRINCIPAL SPEAKER

Rear Admiral Joseph L. Coleman, U. S. Navy
Commandant, Fourth Naval District

ADDRESS BY THE PRINCIPAL SPEAKER

Mr. Hillel S. Levinson
Managing Director, City of Philadelphia

ADDRESS BY GUEST SPEAKER

Captain John M. Donlon, USN
Commander Submarine Squadron Six

READING OF THE NAVY DEPARTMENT ORDERS TO COMMISSION USS ORTOLAN

Rear Admiral Joseph L. Coleman, U. S. Navy
Commandant, Fourth Naval District

COMMISSIONING

The National Anthem is played, the National Ensign and Union Jack are raised; the commission pennant is broken. Ortolan is in commission.



ACCEPTANCE OF COMMAND

Lieutenant Commander Louis M. Tew, U. S. Navy reads his orders and assumes command of the USS Ortolan (ASR-22).

SETTING THE FIRST WATCH

The Commanding Officer directs his Executive Officer, Lieutenant Commander Ross E. Saxon, U. S. Navy to set the first watch.

RENDERING OF HONORS

The Commanding Officer orders the personal flag of the senior officer present eligible for command at sea to be broken with appropriate honors

REMARKS BY THE COMMANDING OFFICER

Lieutenant Commander Louis M. Tew, U. S. Navy

MANNING OF THE SHIP AND ACTIVATION OF EQUIPMENT

BENEDICTION

Lieutenant Charles W. Bichel, CHC, U. S. Navy
Chaplain, Philadelphia Naval Support Activity

NAVY HYMN

Fourth Naval District Band

DEPARTURE OF THE OFFICIAL PARTY

All guests are invited to come aboard following the ceremonies to visit the USS ORTOLAN and her crew.

Lieutenant Commander Ross E. Saxon
United States Navy

Lieutenant Commander Ross E. Saxon was born in Toronto, Canada on October 16, 1936 and entered the United States in February, 1943. He enlisted in the United States Navy in 1953. After basic training he served as a radioman on the USS Rochester (CA-124) and, after completion of basic submarine school in 1955, served on submarines USS Carp (SS-338) and USS Bugara (SS-331). He was advanced to radioman chief petty officer in 1961 and selected for the Navy's Intergration (enlisted to line officer) Program in 1962.

After attending Officer's Candidate School, Newport, Rhode Island, Lieutenant Commander Saxon attended Basic Officers Submarine School, New London, Connecticut. Following this, he served tours in USS Menhaden (SS-377) and USS Capitaine (AGSS-336), he was Officer in Charge, Mobile Training Team INS Cappelini (EX-AGSS-336)/INS Morosini (EX-AGSS-321) and he served as Executive Officer, USS Mackerel (SST-1). He then received orders to Bathyscaph Trieste II where he served as diving officer, electrical officer and assistant officer in charge.

Lieutenant Commander Saxon is qualified for command of submarines, is a certified deep submergence vehicle operator, is a qualified saturation deep sea diving officer and is a graduate of the Armed Forces Staff College.

On 4 July 1972 Lieutenant Commander Saxon reported to Commander, Fourth Naval District as prospective executive officer of Ortolan (ASR-22) and has spent the past year involved in the construction and fitting out of the Ship.

Lieutenant Commander Saxon, with his wife Carol and their two children, Sean 3, and Deanna 5 months, now reside in Philadelphia.





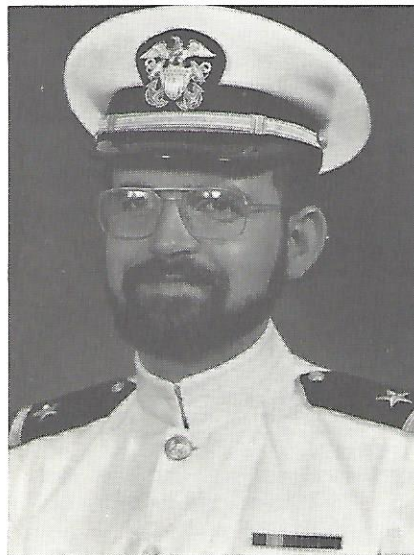
SHIP'S OFFICERS



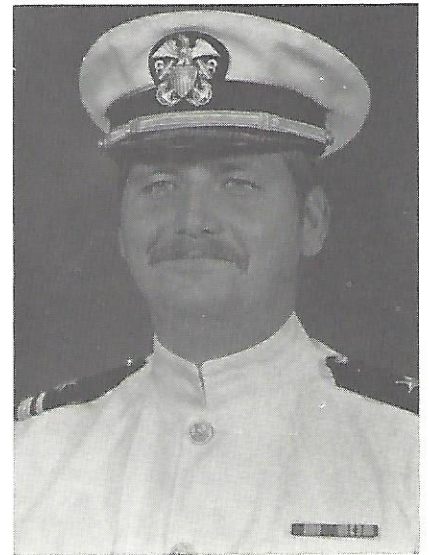
LT J. W. Allen
*Diving/Rescue Officer
Deep Sea Diving (Saturation)
Officer*



LT R. G. Williscroft
Operations/Navigation Officer



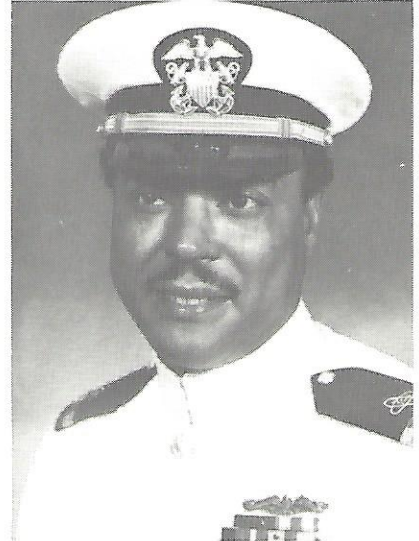
ENS R. F. Graham
*Ship's Boatswain
Deep Sea Diving Officer*



LTJG J. B. Brown
*First Lieutenant
Deep Sea Diving Officer*



ENS J. H. Rovner
*Communicator
Deep Sea Diving Officer*



CWO3 D. R. Davis
*Shipyard Coordinator
Deep Sea Diving Officer*



CWO2 E. L. Bishop
*Engineer Officer
Deep Sea Diving Officer*



CWO2 L. J. Litchford
Supply Officer

SENIOR CHIEF
PETTY OFFICERS



R. L. Warren
*Hull Technician
Master Saturation Diver
Senior Enlisted Advisor*



V. W. Mecca
*Electrician's Mate
Submarines*

CHIEF
PETTY
OFFICERS



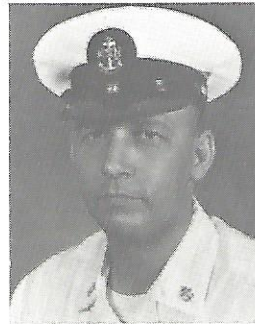
W. Pritchard
Gunner's Mate (Guns)
Master Diver



R. Miller
Radioman
Chief Master at Arms



R. F. Oales
Electrician's Mate



G. L. Carvey
Machinist's Mate
Saturation Diver



W. A. Gutierrez
Boatswain's Mate
Saturation Diver

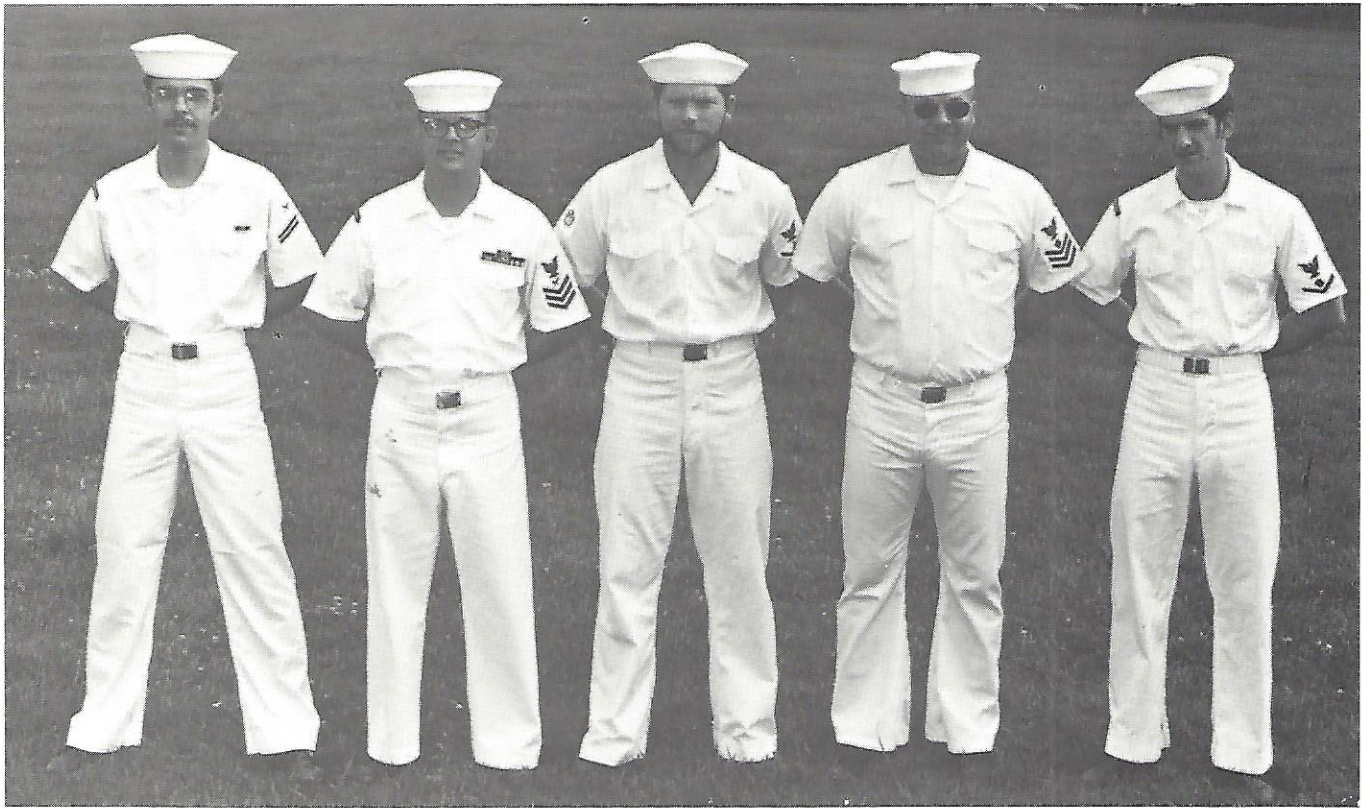


J. A. O'Neal
Commissaryman



R. E. Bamberger
Boatswain's Mate
Saturation Diver

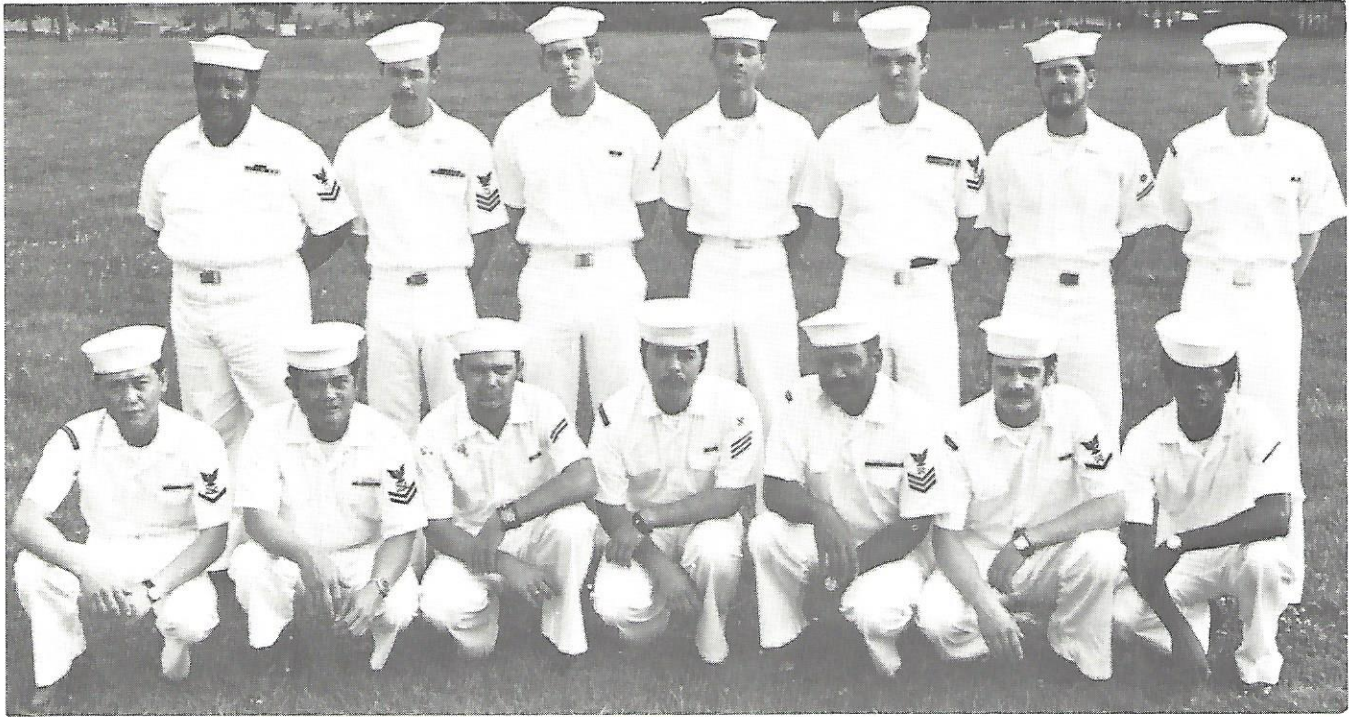
Photograph of
L. K. Cunnup
Electronics Technician
not available



EXECUTIVE DEPARTMENT: (left to right) YNSA R. Allen, YN1 R. Stevenson, PH3 G. Earnshaw, PN1 B. Gibbs, PN3 G. Testagrossa

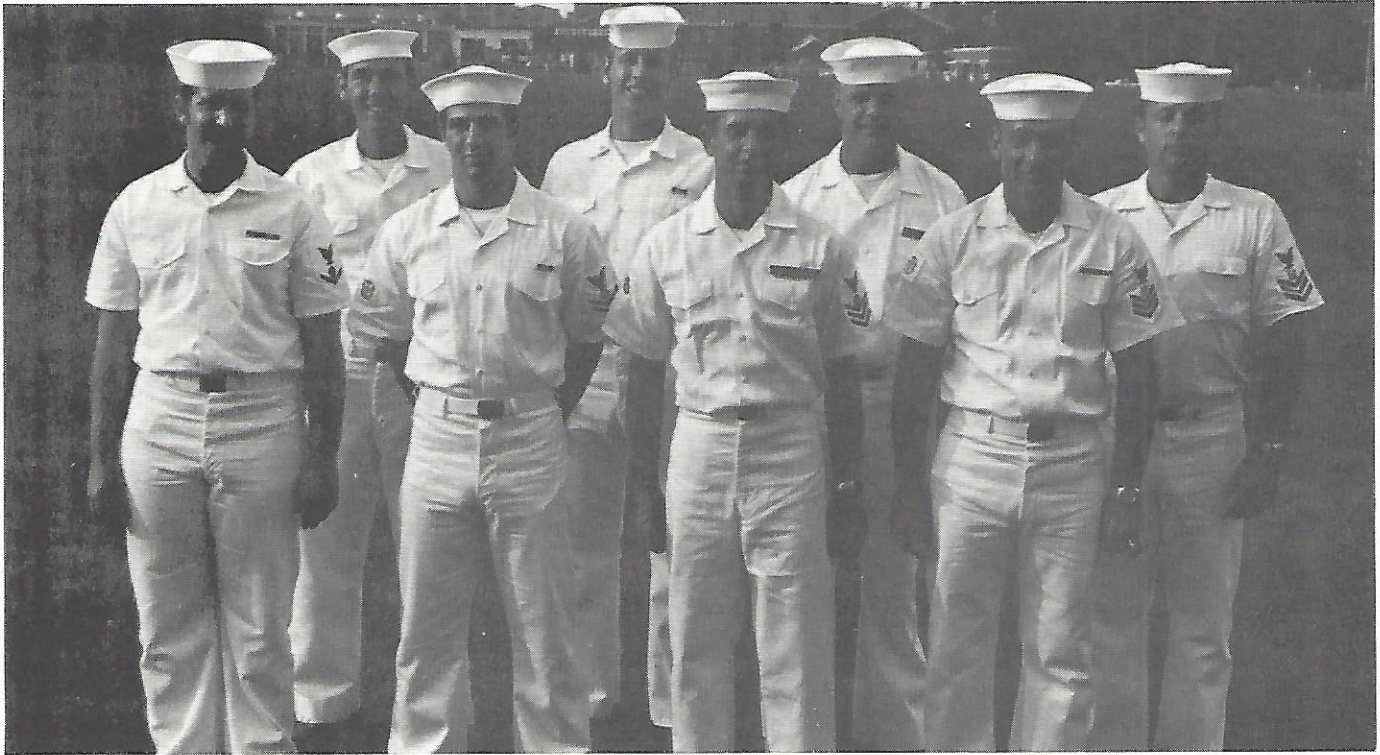


MEDICAL DEPARTMENT: SA P. G. Anderson (*left*) and HM1 (DV)
G. F. Zingshiem. Not pictured is HM1 (DV) Silva.



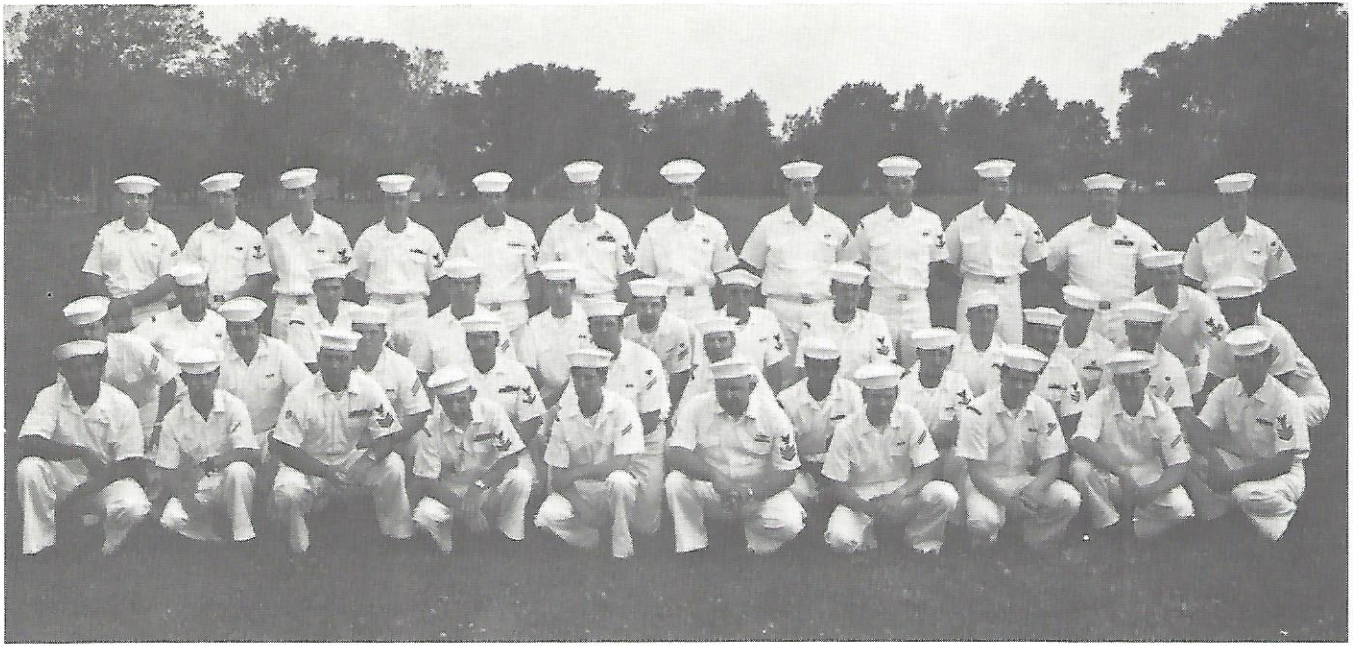
SUPPLY DEPARTMENT: (left to right, first row) SD3 C. DeMesa, SD2 A. Agbay, FA R. Gillis, SHSN M. Carrillo, SK1 C. Clay, SK3 B. Carlson, SR K. Rose; (second row) CS2 E. Morgan, CS1 J. Engle, SR R. Strausbaugh, SR W. Ayala, CS2 P. Guy. Not pictured are

FA J. Daly, FA F. Licsaver, CS3 M. Terzick, SK3 A. Carr, SDSA A. Lavoie, SN G. Armstrong, CSSA L. Warnsing, CSSA M. McGovern and SA R. Lehnst.



DIVING DEPARTMENT: (left to right, first row) EM 3 (DV) G. N. Stanton, EN2 (DV) F. Q. Vespa, EN1 (DV) R. L. Tardy, EN1 (DV) K. C. Dew; (second row) EM1 (DV) J. C. Bookout, BM2 (DV)

A. D. Young, EN1 (DV) J. L. Starcher, BM1 (DV) R. F. Weibe. Not pictured are MR1 (DV) B. C. Heldstab, HM1 (DV) G. F. Zingsheim, HT1 (DV) LeJune and QM1 (DV) Shoulders.



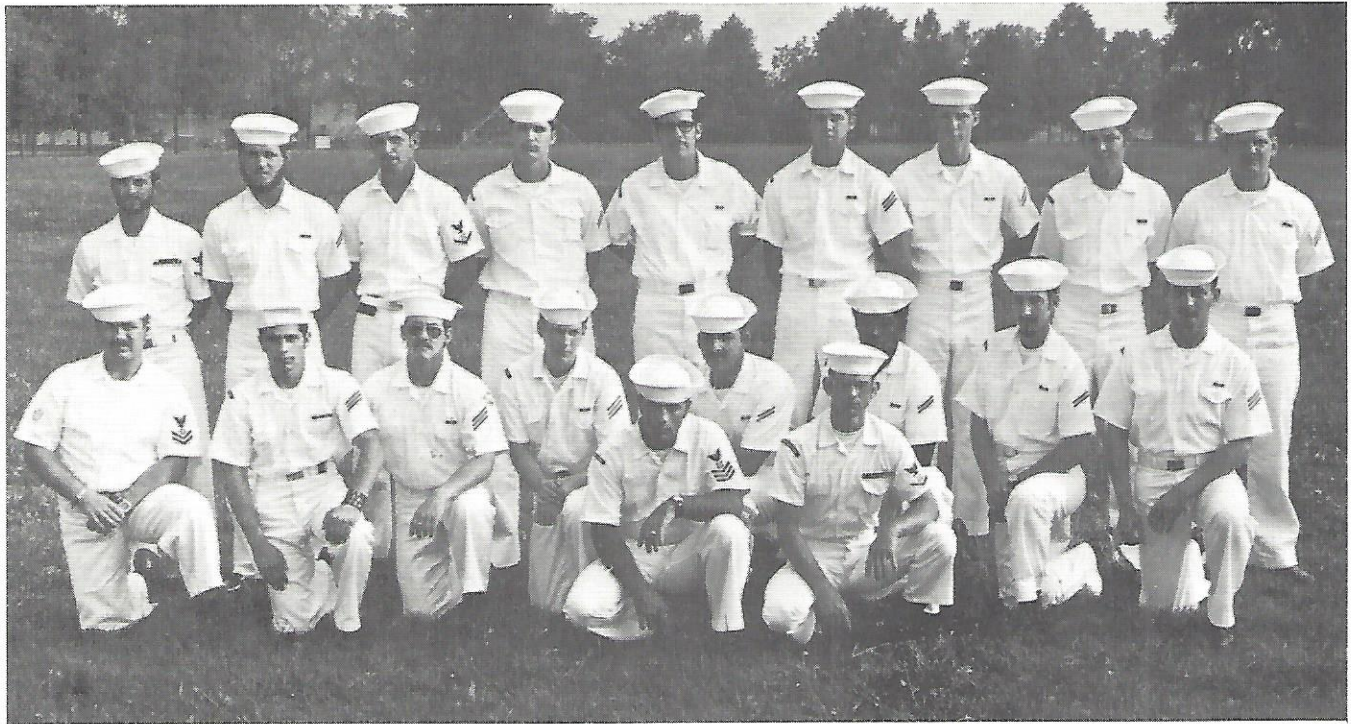
ENGINEERING DEPARTMENT: (left to right, first row) FA D. Whiteside, FA D. Ottinger, HT1 (DV) L. E. Larimore, MM2 M. D. Dewitt, FA W. R. Smith, EN1 H. R. Burkett, FA K. P. Drzyzga, ENFA T. W. Slavin, ENFA D. C. O'Malley, EN1 G.B. Reed; (second row) MRFN M. T. Lee, HTFA R. F. Guica, FN J. J. Kelly, EN3 T. A. DeCarlo, ICFN R. J. Doerr, FN S. D. Barnes, FN R. L. Smittie, EN3 R. D. Pollock, HT2 W. D. Toole, ENFN J. R. LaGrange, FN C. E. Atterberry; (third row) EN3 M. L. Quinlan, EM3 T. W. Caldwell,

EM3 I. L. Robinson, EMFA M. W. Albright, ENFN K. G. Kolacki, EN3 D. E. Roland, EN2 C. Heim, EM3 R. W. Gibbs, MM1 (DV) D. E. Dodd, EN2 F. E. Dyche; (fourth row) EMFN T. E. Micket, HT3 H. D. Poff, IC2 G. A. Van Vooust, EN2 R. D. Hurlan, EN2 J. L. Sykes, IC1 (DV) J. V. Kimbrel, SN S. M. Smith, SN T. A. Gillen, EM3 W. C. Vincent, HT3 R. A. Noteboom, HT2 (DV) D. Rupe, ICFN W. L. Cockroft. Not pictured are HT1 (DV) W. B. Tuckerman, HT1 (DV) D. J. Smith and BT2 (DV) W. A. Littlefield.



OPERATIONS DEPARTMENT: (left to right, first row) STGSN G. W. Graley, STG3 D. W. Lively, RM2 P. Riewer, OSSA A. G. Southers, RMSN H. Lopez, RMSN D. G. Sweet; (second row) ETN2 D. Fucito, SA J. A. Smith, RMSA P. H. Harpen, OS3 C. T. Balistire, STG3 J. B. Burns, ETN3 G. L. Lundby, QM3 L. J. Schultz, OSSA J. A. Hill; (third row) STG3 T. F. Chadwick, STG2 C. H.

Butler, RMSA D. A. Rosen. Not pictured are QM1 D. E. Marion, OS3 R. J. Barbour, ETR2 M. N. Johnson, SM2 J. L. Rosenberg, QM3 C. B. McAnulty, SN D. G. Smith, DS2 D. R. Youngblood, RMSN Q. L. Baker, RM1 C. L. Graham, STG2 J. J. Hall, TERSA E. A. Langevin and RM1 C. E. Mickey.



DECK DEPARTMENT: (left to right, first row) BM3 W. Stoots, SA E. Shepherd, BM3 A. Plozai, SA D. Macon, SA J. Heichler, SN S. Forbes, SA M. Steinkamp, SA M. Gaines, SN S. MacDonald; (second row) BM2 R. Green, SN M. Lopez, SN D. Lund, SN J. Her-

mann, SN D. Grney, SA L. Gordon, SN T. Volino, SN R. Staruk; (third row) BM1 B. Gay, BM3 D. Gryder, BM1 Vandine, SA Miller, SA Morrison, MN3 C. Smith, SA D. Atkins, SA T. Bradford, SA D. Cannon. Not pictured are C. Cozzitanto, and SA D. King.

THE NAVY HYMN

ETERNAL FATHER! STRONG TO SAVE

Eternal Father, strong to save,
Whose arm hath bound the restless wave,
Who bidd'st the mighty ocean deep
Its own appointed limits keep;
O hear us when we cry to Thee
For those in peril on the sea!

O Christ! Whose voice the waters heard
And hushed their raging at Thy word,
Who walked'st on the foaming deep,
And calm amidst its rage didst sleep;
O hear us when we cry to Thee
For those in peril on the sea!

Most Holy Spirit! Who didst brood
Upon the chaos dark and rude,
And bid its angry tumult cease,
And give, for wild confusion, peace;
O hear us when we cry to Thee
For those in peril on the sea!

Lord, guard and guide the men who fly
Through the great spaces in the sky,
Be with them always in the air
In darkening storms or sunlight fair.
O hear us when we lift our prayer
For those in peril in the air!
AMEN.

Credits:
Stanzas 1 to 3, William Whiting, 1860
Stanza 4, Mary C. D. Hamilton, 1915: ALT.



THE SHIP'S INSIGNE

The four anchors around the border are indicative of the ability of the ship to make a four point moor in up to 1000 feet of water. The bow on view of the ship shows the unique catamaran hull while at the same time gives an indication as to the size of the ship. The DSRV is shown below the ship to indicate their dual role and compatability. The PTC and diver are shown to depict the capability of the advanced diving system installed.

USS ORTOLAN
ASR-22
COMMISSIONED
14 JULY 1973
PHILA. NAVAL SHPYD
PHILA., PENNA.