

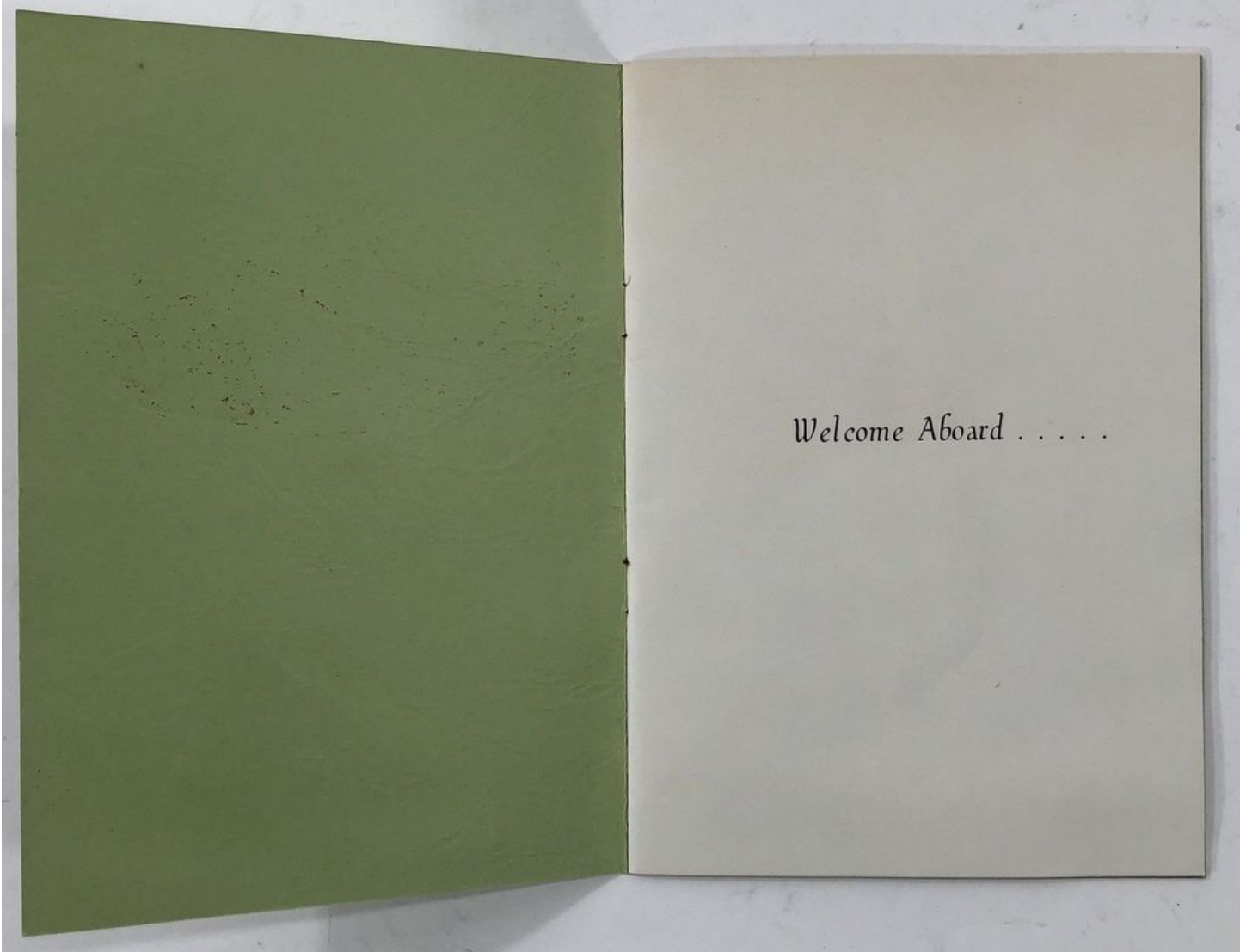


Dependents Cruise

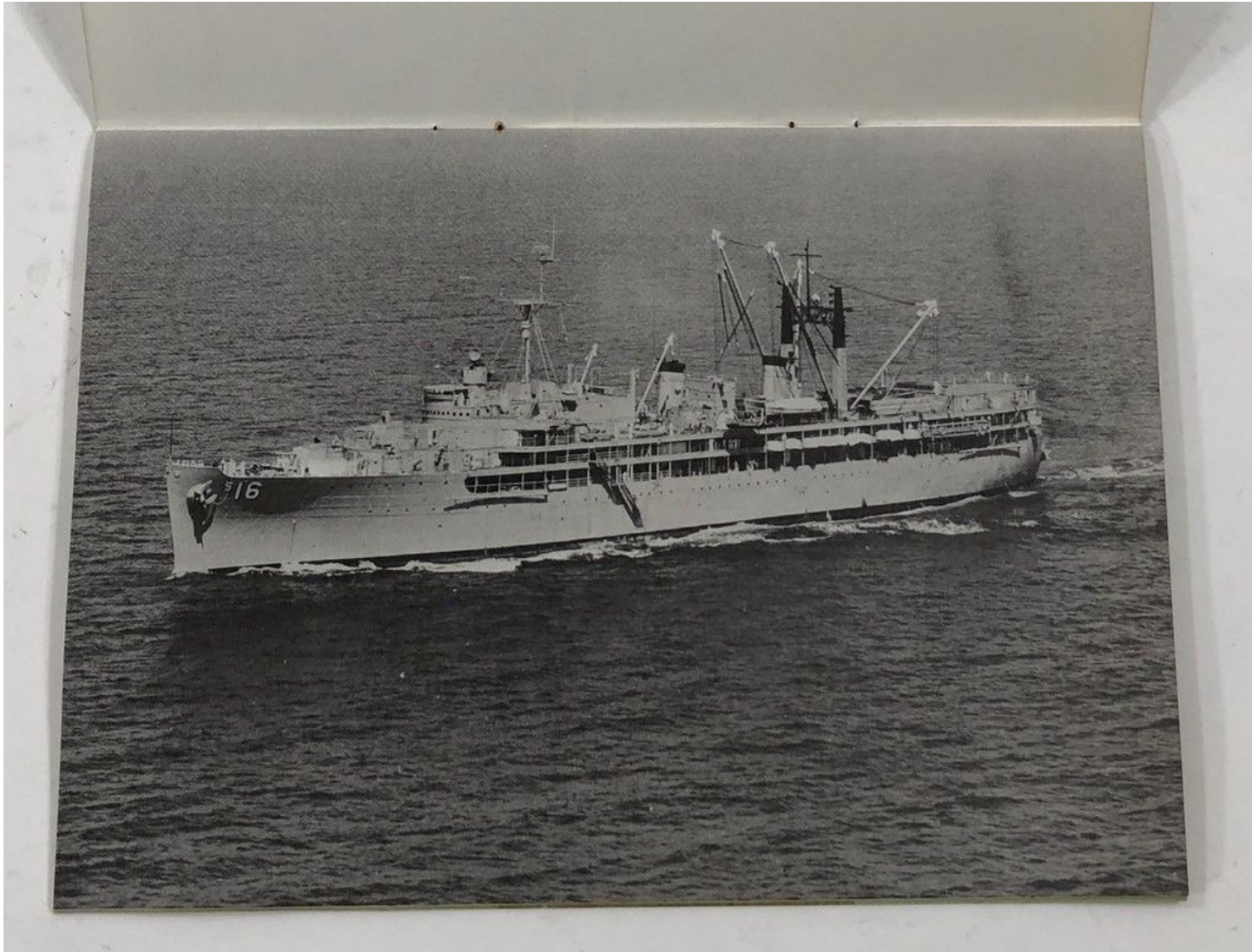
USS Howard W. Gilmore AS-16

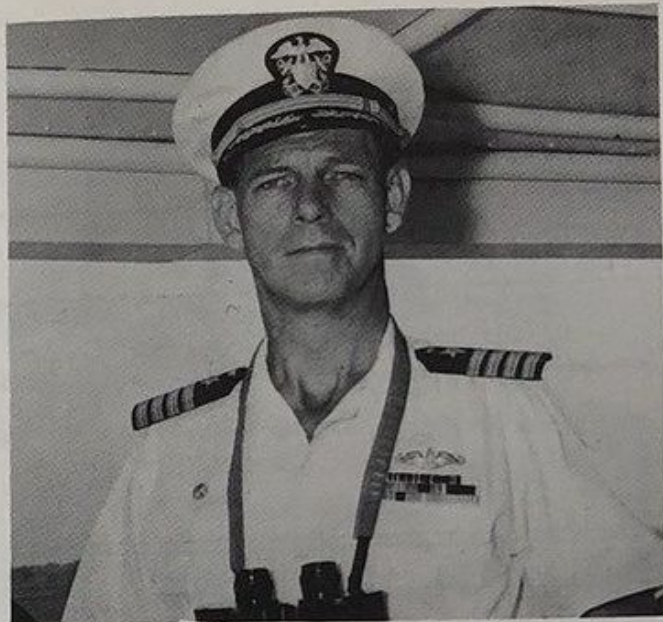
11 August 1967





Welcome Aboard





Welcome Aboard . . .

On behalf of the United States Navy, I welcome you to the USS Howard W. Gilmore. We are proud of GILMORE and her role in national defense. Our primary mission is to service submarines.

We will do our best to make your visit as informative and as interesting as possible. If you should have any questions concerning GILMORE or her mission, please don't hesitate to ask them. We want you to know as much as you desire about GILMORE, her crew or her contribution to the military posture of the United States.

R. M. CLARK
Captain, U. S. Navy
Commanding Officer

Ship's Log

USS _____ Zone _____
 At/Passage from _____ to _____
 Date _____ 19____
 (month) (day)

TIME	RECORD ALL EVENTS OF THE DAY

Schedule of Events

- 0745--0815 Guests embark aboard GILMORE, and are escorted to Boat Deck.

- 0830 Guests welcomed aboard by Commanding Officer. Indoctrination of guests by Dependents Cruise Coordinator, Life Preserver demonstration.

- 0900 Underway for Charleston Operating Area.

- 1030 Guided tours of the ship.

- 1045 (Approximately) Enter International Waters.

- 1100 Lunch for oncoming watchstanders.

- 1130--1330 Lunch for ALL HANDS and their guests.

- 1230 Anchor & General Drills.

- 1300 Guided tours of the ship.

- 1400 Refreshments for all guests will be served on the Boat Deck.

- 1500 GILMORE will moor Pier November, U.S. Naval Station, Charleston.

Purpose of Cruise

For some time you have been wondering exactly what your husband, father, son, brother or friend does when he sails to sea aboard the GILMORE. Today you have that chance to observe him performing his duties at sea underway.

Don't be too surprised if you detect excitement in the air when put to sea - no matter how often we sail, that same experience of adventure stirs our emotion. We hope you, too, will share and appreciate our love of the sea.

We want you to be interested in the GILMORE, though we do not intend to show-off or disguise any truth about us. We'll answer any questions you can think of; we'll show you all over the ship except in a few "off limit" places; and we'll make you feel a part of the GILMORE family before the end of the cruise.

As an added feature we will be conducting General Drills for the benefit of our prospective Commanding Officer, Captain F.T. Rawlings, Jr.

Ladies Powder Rooms

- 01 Level - Compartment A-0107-L
- 02 Level - Compartment A-0209-L
- 2nd Deck - Compartment B-202-L

DINNER MENU

11 August 1967

Roast Turkey

Baked Spiced Ham

Fried Ocean Perch with Tarter Sauce

Buttered Corn

Buttered Peas

Macaroni Salad

Potato Salad

Stuffed Celery Hearts

Assorted Salad Bar with Dressing

Hot Rolls and Butter

Devils Food Cake with Cocoa Fudge Icing

Assorted Ice Cream

Fresh Lemonade

Milk - Coffee - Tea

History

The USS HOWARD W. GILMORE, which is 529 feet long and weighs 15,034 tons fully-loaded, is the sixth of seven FULTON class submarine tenders. When the keel was laid 21 December 1942 in the Mare Island Navy Yard at Vallejo, California, the ship was to be named the USS NEPTUNE. Prior to her launching, however, the Navy Department, desiring to honor one of the outstanding heroes of the early part of the war, renamed her HOWARD W. GILMORE for the submarine commander, who lying wounded on the bridge after a surface engagement, gave his life to save his submarine and crew by giving the immortal order, "Take Her Down".

The ship was launched on 16 September 1943. Her sponsor was Mrs. Howard W. Gilmore, widow of the late Commander and resident of New Orleans. The tender was commissioned 24 May 1944 and entrusted to her first commanding officer, Captain Daniel N. Cone, USN, of San Francisco.

GILMORE departed from Pearl Harbor on September 1944 to refit and provision submarines at various ports until August 1945. It was at this time she returned to the United States with more than one thousand passengers and was accompanied by eighteen submarines.

The ship stayed a short while at Bayonne, New Jersey, took on supplies and provisions at New London, Connecticut, was supplied with torpedoes at Portsmouth, New Hampshire, proceeded to her new home port of Key West, Florida. Charleston, South Carolina, became her new home through official reassignment in April 1959.

The HOWARD W. GILMORE is a submarine tender presently manned by 35 officers and 950 enlisted personnel. From time to time increases or decreases, depending upon the international situation. Its mission is to service, repair, and furnish supplies for the submarines and other units attached to Submarine Squadron FOUR as well as to other Navy units as need and opportunity arise.

The ship has facilities for making any repairs to submarines other than a major conversion or overhaul and is capable of servicing our nuclear submarines. The shops, equipped with the latest type of machinery and staffed by technically-trained personnel, are as follows:

Pipe Shop	Nuclear Weapons	Submarine Engine Ovhl.
Sheet Metal	Nuclear Repair	Interior Communication
Welding	Testing Lab	Watch/Typewriter Shop
Machine Shop	Foundry	Electronics Repair
Optical Shop	Pattern Shop	Mechanical Instrument
Injector Shop	Carpenter Shop	Reactor Instrument
Electrical Shop	Gyro Compass	Sound Analysis
Meter Shop	Divers/Riggers	Engraving Shop
Print Shop	Drafting Shop	Rubber/Plastics
Radiographic	Tech Library	Radiac Calibration
Gauge Shop	Photo Lab	Shipfitter Shop

Our Radiological Health, Medical and Dental facilities can provide all the necessary services which ordinarily might be required for two- thousand personnel.

Supplying the needs of the Repair, Engineering, Medical and Dental Departments calls for an efficient Supply Department- and this GILMORE has. It is comprised of General Stores, Galley, Bakery, Ship's Store, Soda Fountain, Laundry and Dry Cleaning, Tailoring, Cobbler Shop, and Disbursing, including the operation of a SuperMarket type facility for hundreds of common- use items.

GILMORE looks to the personal needs of the crew by providing 1200 stock items from the ships store. The crew can buy necessities in addition to the latest styles in jewelry and many household items. Larger items can be special ordered at wholesale prices. SAVE MORE ON THE GILMORE.

Our soda fountain is second to none found in town. During your tour pause at the fountain to sample the wide variety of products and pleasant service.

To enable all departments to function most efficiently, a large engineering department is maintained. In addition to supplying power for propelling the ship, the engineering department maintains all auxiliary equipment such as refrigeration, telephones, lighting and power for cranes and elevators. Under engineering comes the damage control division which takes care of all emergencies such as fires, flooding, and structural damage.

Protestant Divine services are conducted on board each Sunday at 10:00 by the Chaplain. Roman Catholic services are at 08:30, conducted by a visiting Chaplain. Attendance by dependents is quite common and family worship is heartily encouraged. Coffee and donuts are served in the library after both services.

Notes

