

Contributed by Sue Hall

LAUNCHING
OF
THE

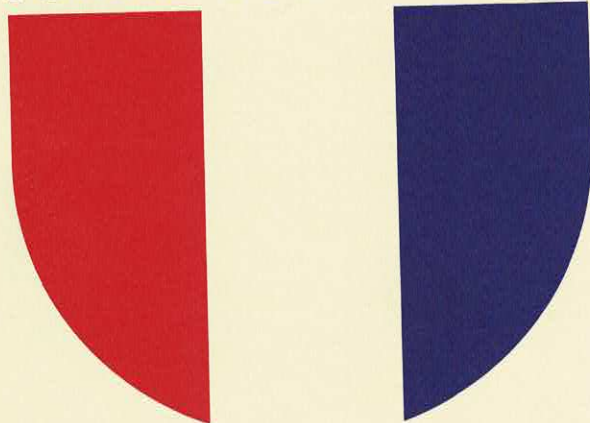
El Paso

MAY 17, 1969

NEWPORT NEWS SHIPBUILDING AND DRY DOCK COMPANY • NEWPORT NEWS, VIRGINIA



FORCES FOR FREEDOM



LAUNCHING OF THE
AMPHIBIOUS CARGO VESSEL

USS EL PASO

LKA 117

MAY 17, 1969

NEWPORT NEWS SHIPBUILDING AND DRY DOCK COMPANY

NEWPORT NEWS, VIRGINIA



Sponsor

MRS. JOHN G. TOWER



Matron of Honor

MRS. RICHARD C. WHITE

Maids of Honor

MISS JEANNE TOWER

MISS MARIAN TOWER

MISS PENNY TOWER

Program

"EL PASO"

The Shiloh Singers, Hampton, Virginia

NATIONAL ANTHEM

Naval Air Force Atlantic Fleet Band, Norfolk, Virginia

WELCOME AND

INTRODUCTION OF THE SPEAKER

Mr. L. C. Ackerman, President and Chief Executive Officer
of the Newport News Shipbuilding and Dry Dock
Company

ADDRESS

The Honorable John G. Tower, United States Senator
of Texas

INVOCATION

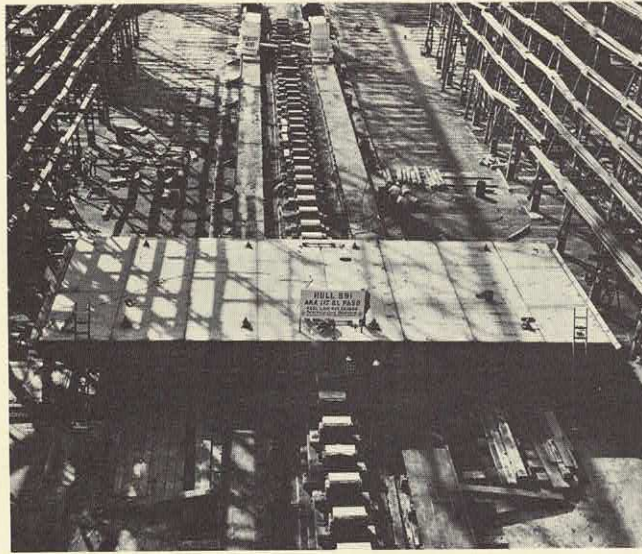
Captain E. E. Bosserman, CHC, USNR, Pastor of Trinity
Evangelical Lutheran Church, Newport News, Virginia

INTRODUCTION OF THE SPONSOR
AND THE MAIDS OF HONOR

Mr. Ackerman

CHRISTENING

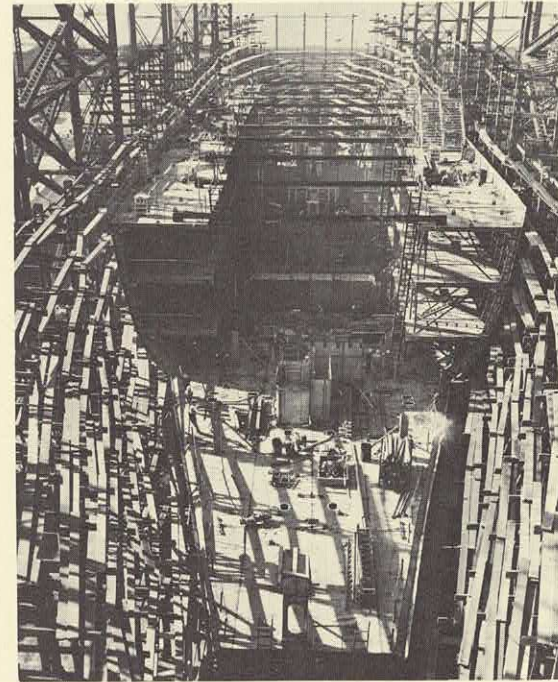
Mrs. John G. Tower



KEEL LAYING OCTOBER 22, 1968



NOVEMBER 25, 1968

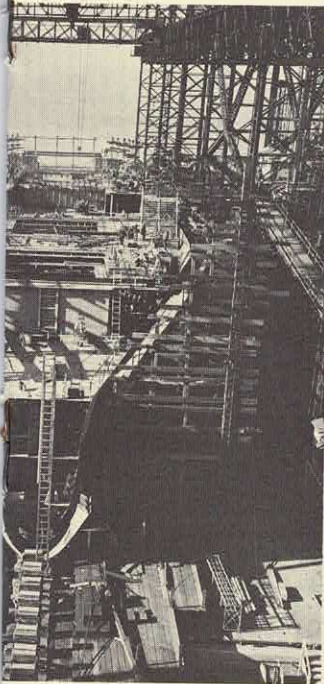


JAN

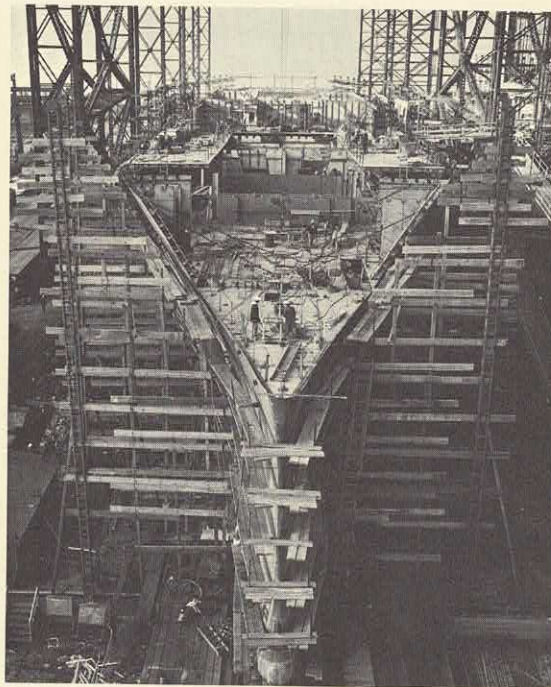


OF THE AMPHIBIOUS CARGO VESSEL USS EL PASO

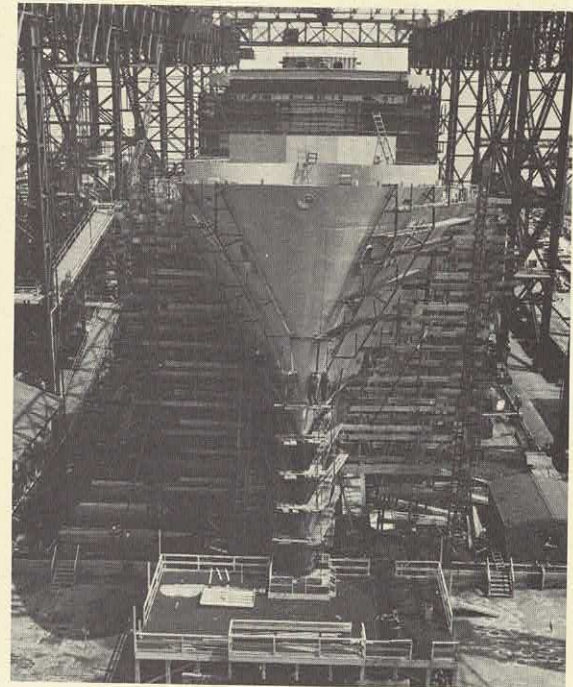
JANUARY 28, 1969



FEBRUARY 28, 1969



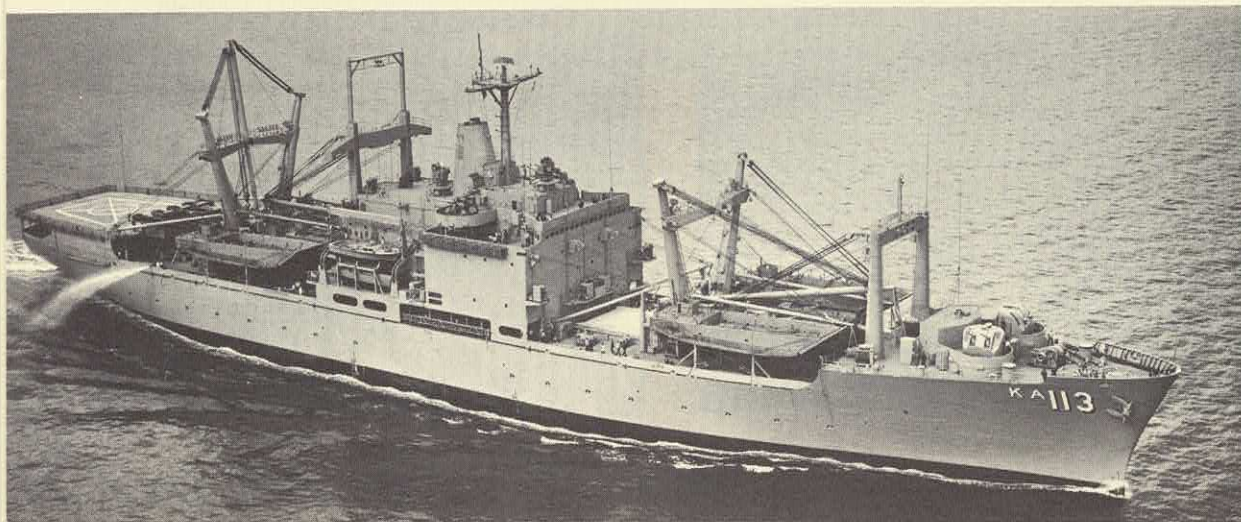
MAY 6, 1969



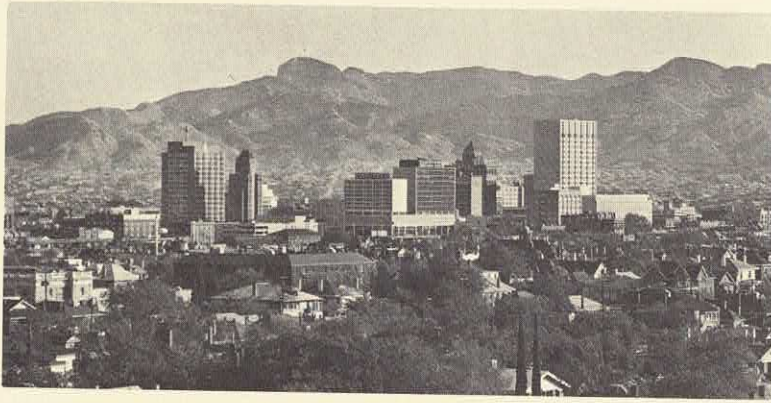
DETAILS OF THE USS EL PASO

TYPE.....Amphibious Cargo Vessel
NAVY DESIGNATION.....LKA 117
LENGTH OVERALL.....575 feet 6 inches
LENGTH, BETWEEN PERPENDICULARS.....550 feet
BREADTH, MOLDED MAXIMUM.....82 feet
FULL LOAD DISPLACEMENT.....18,600 tons
DEPTH, MOLDED AT SIDE TO MAIN
DECK AMIDSHIPS.....47 feet 10 inches
DRAFT (FULL LOAD).....25 feet 5 inches
NUMBER OF PROPELLERS.....One
SHAFT HORSEPOWER.....22,000
SPEED, SUSTAINED.....20 knots, not less than

CONTRACT DATE.....August 22, 1966
KEEL LAID.....October 22, 1968
LAUNCHED.....May 17, 1969
SCHEDULED DELIVERY.....Fall, 1969
ARMAMENT.....Four 3"/50 cal. twin mounts
TOTAL COMPLEMENT (SHIP'S CREW AND TROOPS)....642
MECHANIZED LANDING CRAFT.....18
CARGO HANDLING CRANES.....12
MAXIMUM CRANE CAPACITY.....78.4 tons
AIRCRAFT FUEL TANK CAPACITY.....2,570 tons
JET FUEL TANK CAPACITY.....137 tons



THE FIRST SHIP OF
THE CLASS, USS
CHARLESTON
(LKA-113), WAS
COMMISSIONED
DECEMBER 14, 1968



THE CITY OF EL PASO

The view from the top of El Paso's Ranger Peak encompasses three states, two countries and two world-famous cities. El Paso and its sister city, Juarez, Mexico—located within walking distance across the Rio Grande—form the largest bilingual metropolis on an international boundary anywhere in the world.

The earliest recorded footsteps in "El Paso del Norte" (The Pass of the North) belong to the Pueblo Indian. Early Spanish explorers, entering the area in 1536 in search of gold, found the rich valley settled and being farmed by the Indians. Then came the conquistadors with Spanish missions, spreading Spanish colonization to the Southwest and beyond to California. The missions established along the route became vital links in the chain of cities that developed.

The early development of El Paso took place around the Mission de Nuestra Senora de Guadalupe in 1681, when Indians drove 2,000 Spanish settlers out of New Mexico. Because of its location in the center of the lowest snow-free pass through the Rocky Mountains, the small mission grew steadily and substantially.

El Paso began its growth as an American city during the 1840s. The war with Mexico, the discovery of gold, the rebellious Indians and the city's important geographical location all contributed to the establishment of a strategic military outpost in the area in 1848—Fort Bliss, which remains a vital part of El Paso's life today.

The fabric of El Paso's exciting history is woven around such names as Wyatt Earp, Billy the Kid, Pancho Villa and General "Black Jack" Pershing.

Its growth from a dusty border town to an important and influential regional center has been phenomenal. However, though the face of the city continuously changes, the faces of her people remain changeless. They continue to reflect the quality of the ageless cultural legacies of many civilizations and many centuries. This composite of people is the heart of El Paso's unique and complex personality.



The Honorable John G. Tower

United States Senator of Texas

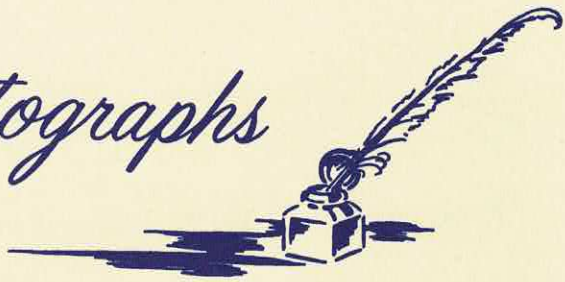
John Goodwin Tower was born in Houston, Texas. Following his graduation from Beaumont High School in 1942, he served aboard a Navy gunboat during World War II.

In 1948 he received his degree in Political Science from Southwestern University and went on to Southern Methodist University to obtain his Master's degree in the same field in 1953. He did postgraduate work at the University of London (England) and taught government for nine years at Midwestern University in Wichita Falls, Texas.

Re-elected to his second term in the United States Senate in 1966, Senator Tower serves on three major committees—Armed Services, Banking and Currency, and the Joint Committee on Defense Production. His subcommittee responsibilities include Preparedness Investigating, Defense Construction, Housing and Urban Affairs, Small Business and International Finance.

Senator Tower is married to the former Miss Lou Bullington of Wichita Falls. They have three daughters, ages twelve to fourteen.

Autographs



**NEWPORT NEWS SHIPBUILDING
AND DRY DOCK COMPANY**

A MAJOR COMPONENT OF



TENNECO INC.