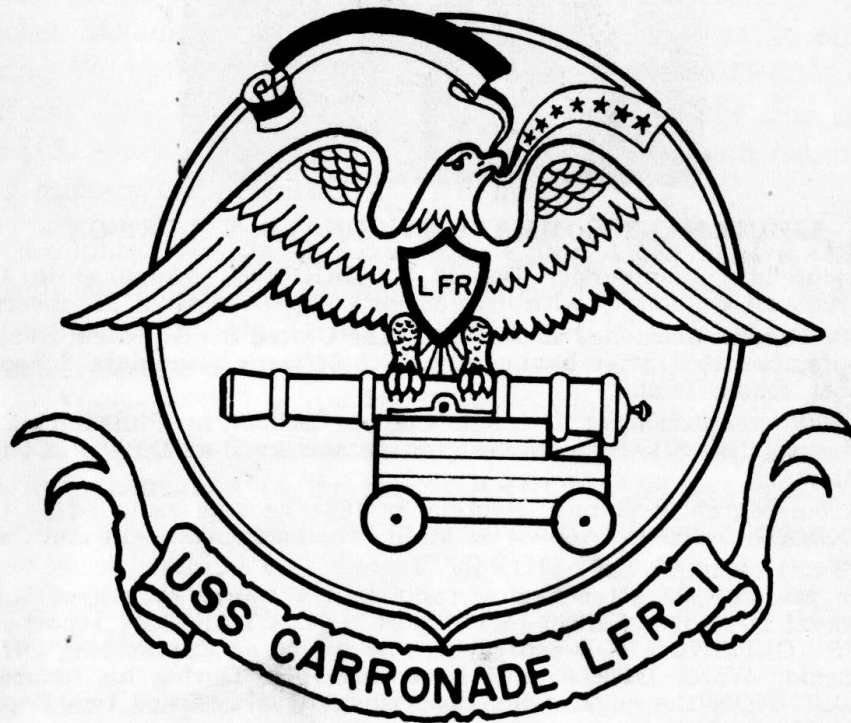


**DECOMMISSIONING
CEREMONY**

**USS CARRONADE
LFR-1**



24 July 1970

**PUGET SOUND NAVAL SHIPYARD
BREMERTON, WASHINGTON**



LIEUTENANT COMMANDER DONALD E. LARISON

Lieutenant Commander Donald E. LARISON graduated in 1960 from Auburn University with a Bachelor's Degree in Civil Engineering.

He was commissioned as Ensign in the United States Naval Reserve 15 September 1961 after having attended Officer's Candidate School in Newport, Rhode Island.

Upon completion of Damage Control School in Philadelphia he reported to USS SHASTA (AE-6), where he served as Damage Control Assistant.

From March 1963 until September 1964 he was assigned to USS CALOOSAHATCHEE (AO-98) as Main Propulsion Assistant and Cargo Officer.

In March 1965 after having completed a course of instruction at the Naval Destroyer School in Newport, LCDR LARISON reported to the USS GLENNON (DD-840), where he served as Engineering Officer and Senior Watch Officer until December 1967. During his tenure on the GLENNON the engineering department was awarded two Departmental Battle Efficiency awards for excellence.

From December 1967 until December 1968 he was assigned to the Bureau of Naval Personnel in Washington, D.C., as Assistant to the Engineering Ratings and the Development & Training Center Coordination Officer.

From January 1969 until July 1970 Lieutenant Commander LARISON served as Executive Officer/Navigator/Evaluator on board USS CARRONADE while that unit was engaged against insurgent forces in Vietnam and subsequently he has served as Commanding Officer.

LCDR LARISON wears the Navy Achievement Medal, the National Defense Service Medal, the Vietnam Service Medal with 2 stars and the Republic of Vietnam Campaign Medal.

He is married to the former Barbara Vincent of Newport, Rhode Island. They have one child, Andrea, two years old.

THE SHIP

HISTORY OF USS CARRONADE (LFR-1)

USS CARRONADE (LFR-1), an inshore fire support ship, derives her name from the short, light, iron cannon which was first made by Carron Iron Works of Carron, Scotland. The Carronade was used chiefly on ships to throw shot at close quarters. Thus, USS CARRONADE (LFR-1) is aptly named. The ship concentrates a devastating amount of rocket fire at close quarters, and although small in size, her firepower is on a par with that of a cruiser.

A specialized ship, CARRONADE was designed to navigate close inshore where shallow water might prevent larger warships from operating. The ship's design is a natural advance over the Rocket Medium Landing Ships (LSMRs), which were so effective during World War II and the Korean Conflict. CARRONADE is the only Inshore Fire Support Ship ever built and the first ship in the U.S. Navy to be constructed from the keel up with habitability as a military characteristic of her design.

Commissioned on 25 May 1955, USS CARRONADE (LFR-1) actively participated in Pacific Fleet Operations during the following three-year period. On 31 May 1960 CARRONADE was taken out of active service and placed in the reserve "mothball" fleet at San Diego. However, due to the urgent requirements for additional naval gunfire support in Vietnamese coastal waters, the Navy Department ordered reactivation of the ship. CARRONADE was subsequently recommissioned at Long Beach Naval Shipyard on 2 October 1965. After several months of upkeep CARRONADE departed the United States and arrived at her new homeport of Yokosuka, Japan on 11 March 1966.

Since CARRONADE's arrival in the Western Pacific, the ship has earned two Navy Unit Commendations and has been recommended for a third while firing over 110,000 rounds of 5" spin stabilized rockets in close support of allied troops operating in the Republic of Vietnam.

On 24 July 1970 at the completion of nearly 5 years of combat duty and 10 years of total service USS CARRONADE will be inactivated, ready to answer her next call to action.

SHIP'S COMPANY

Commanding Officer

LCDR DONALD E. LARISON

Executive Officer

LT WILLIAM C. ARMSTRONG

Engineering Officer

LT(jg) JAMES E. VEST, JR.

Weapons Officer

LT(jg) HUGH W. HORNE

Supply Officer

LT(jg) KENNETH A. WILLCOX,

Operations Officer

LT(jg) RICHARD W. JEFFERIES

SUPPLY DEPARTMENT

CS1 KNOTT

SK2 LEHR

DK2 GUIVARA

SD2 SANTOS

CS2 KAMIYA

SK3 ARNELL

SK3 TEAGUE

CS3 MORENO

SN SCANLON

SN TISDALE

SN SWEENEY

SN JOHNSON

SN CALDWELL

TN NICOLAS

TN CAMET

SN EATON

OPERATIONS DEPARTMENT

SM1 GRINNEL

YN1 PREBLE

ETN2 MYERS

RM2 MOCK

ETR2 FITZHUGH

PN2 THOIN

RD3 HOSFORD

RD3 PERRY

RD3 HINES

RD3 HILL

RM3 TUNNELL

SM3 FLOREA

ET3 SHILLING

YN3 BOZEMAN

QM3 MILLER

ET3 WEBB

SN BISHOP

SN CLARK

SN CLINTON

SN HYKE

SN LINDQUIST

SN MENDOZA

SN SANCHEZ

SN ROGERS

ENGINEERING DEPARTMENT

ROBERTS EN2	CORBE EM3	BARR FN
KALB EN3	KUESTER EN3	McBEE FN
BACKUS SFP3	DEVARGAS FN	SHEPPARD FN
CHIODO DC3	STEPHENS FN	CUNNINGHAM FN
WOITKO EM3	RODRIQUEZ FN	HERNANDEZ FN
GALLAGHER IC3	VENTI FN	KOOLICK FA
OLIVER IC3	MILLS FN	CURLEY FA

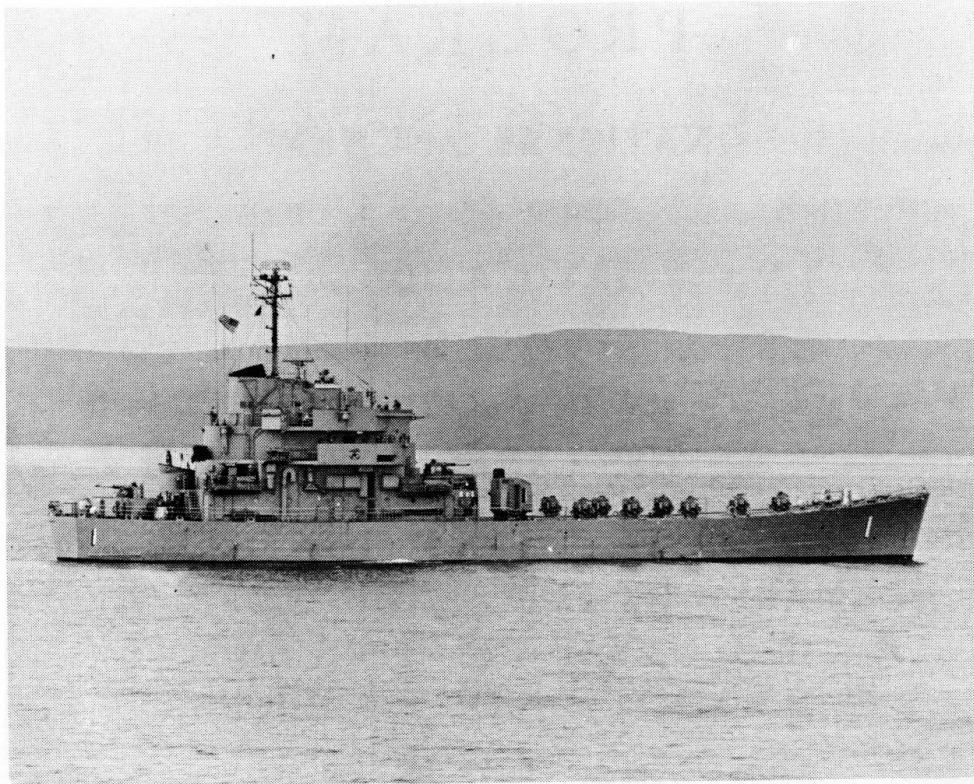
WEAPONS DEPARTMENT

WEAPONS DIVISION

GMG1 RUTLEDGE	SN LUCE	SN HAYS
FTG2 MYERS	SN FUSICH	SN GEIGER
FTG3 PARCELL	SN SELJOS, L.	SN HUNDELT
FTG3 DONELSON	SN HOLDAWAY	SN JORDAN
GMG3 GEORGE	SN ORCINO	SA TIEDEMAN
SN REED		

DECK DIVISION

BM2 SPRINGMEYER	SN TODD	SN DAVIS
BM3 BORGES	SN LEACH	SA HUSBAND
BM3 ROBERSON	SN AVERY	SA PATTERSON
SN BROWN	SN GRIFFIN	SA LITTLE
SN YOUNG	SN JUAREZ	SA SELJOS, M.



SHIP'S CHARACTERISTICS

LENGTH	245'
BEAM	38' - 7½"
DISPLACEMENT	1,563 Tons (Full Load)
MAXIMUM SPEED	14 Knots
CRUISING RADIUS	4,250 Miles
PROPULSION	Two Fairbanks-Morse 38D8 1/8
SHAFT HORSEPOWER	3,200
PROPELLERS	Two Four-Blade Controllable, Reversible Pitch

PROGRAM

NATIONAL ANTHEM



INVOCATION



REMARKS BY COMMANDING OFFICER
USS CARRONADE



REMARKS BY COMMANDING OFFICER
U.S. NAVAL INACTIVE SHIP
MAINTENANCE FACILITY



DECOMMISSIONING



SECURE THE WATCH



PRESENTATION OF COMMISSIONING
PENNANT



DELIVERY OF SHIP



BENEDICTION



DEPARTURE OF SHIP'S COMPANY