



LPD-9

***USS DENVER LPD-9
COLLISION DAMAGE***

July 2000

Collision Damage USS DENVER LPD-9



USS DENVER ARRIVING AT PHNS&IMF ON 14 JULY 00

Collision Damage USS DENVER LPD-9



USS DENVER ARRIVING AT PHNS&IMF ON 14 JULY 00

Collision Damage USS DENVER LPD-9



USS DENVER ARRIVING AT PHNS&IMF ON 14 JULY 00

Collision Damage USS DENVER LPD-9



DOCKING PORTSIDE NEXT TO PIER - MAJOR AREAS AFFECTED:

- TWO BOS'N STOREROOMS ON THIRD DECK
- PEAK TANK ON FOURTH DECK
- INACCESSIBLE VOID BELOW FOURTH DECK

Collision Damage USS DENVER LPD-9



VIEWS OF BOW DAMAGE - PORT SIDE VIEW

Collision Damage *USS DENVER LPD-9*



BOS'N STOREROOM 2-E-O-A
SECOND DECK



BOS'N STOREROOM 2-E-O-A
SECOND DECK

Collision Damage USS DENVER LPD-9



BOS'N STOREROOM 2-E-O-A
SECOND DECK

Collision Damage USS DENVER LPD-9



**SD STOREROOM 3-10-1-A
THIRD DECK - LOOKING FWD**

Collision Damage USS DENVER LPD-9



**SD STOREROOM 3-10-1-A
THIRD DECK - LOOKING FWD**

Collision Damage USS DENVER LPD-9



BOW SECTION
THIRD AND FOURTH DECK

Collision Damage USS DENVER LPD-9



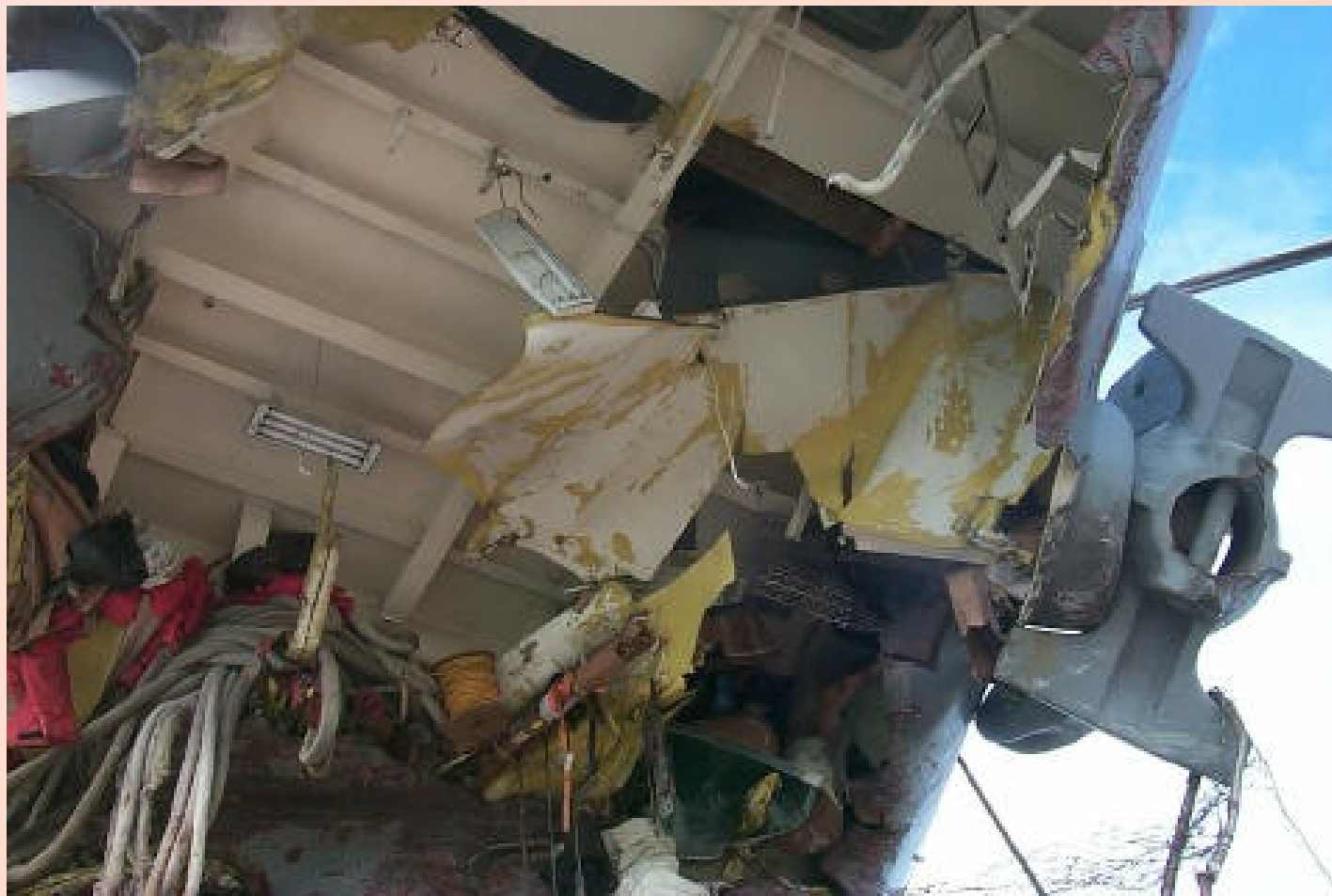
SD STOREROOM 3-10-1-A

Collision Damage USS DENVER LPD-9



**BOW SECTION - PORT SIDE
LOOKING UP TO THE BOTTOM OF SECOND DECK**

Collision Damage USS DENVER LPD-9



BOW SECTION

LOOKING UP TO THE BOTTOM OF SECOND DECK

Collision Damage USS DENVER LPD-9



BOW SECTION - STBD SIDE

Collision Damage USS DENVER LPD-9



BOW SECTION - STBD SIDE

Collision Damage USS DENVER LPD-9



BOW SECTION - STBD SIDE PROFILE

Collision Damage USS DENVER LPD-9



BOW SECTION - PORT SIDE PROFILE

Collision Damage USS YUKON



USNS YUKON DAMAGE

Collision Damage USS YUKON



USNS YUKON DAMAGE

Collision Damage USS YUKON



USNS YUKON DAMAGE

Collision Damage USS YUKON



USNS YUKON DAMAGE

Collision Damage USS YUKON



USNS YUKON DAMAGE

Collision Damage USS YUKON



USNS YUKON DAMAGE

Collision Damage USS YUKON



USNS YUKON DAMAGE

Collision Damage USS DENVER LPD-9



STAGING REQUIRED FROM ABOVE AND BELOW

Collision Damage USS DENVER LPD-9



STAGING REQUIRED FROM ABOVE AND BELOW

Collision Damage USS DENVER LPD-9



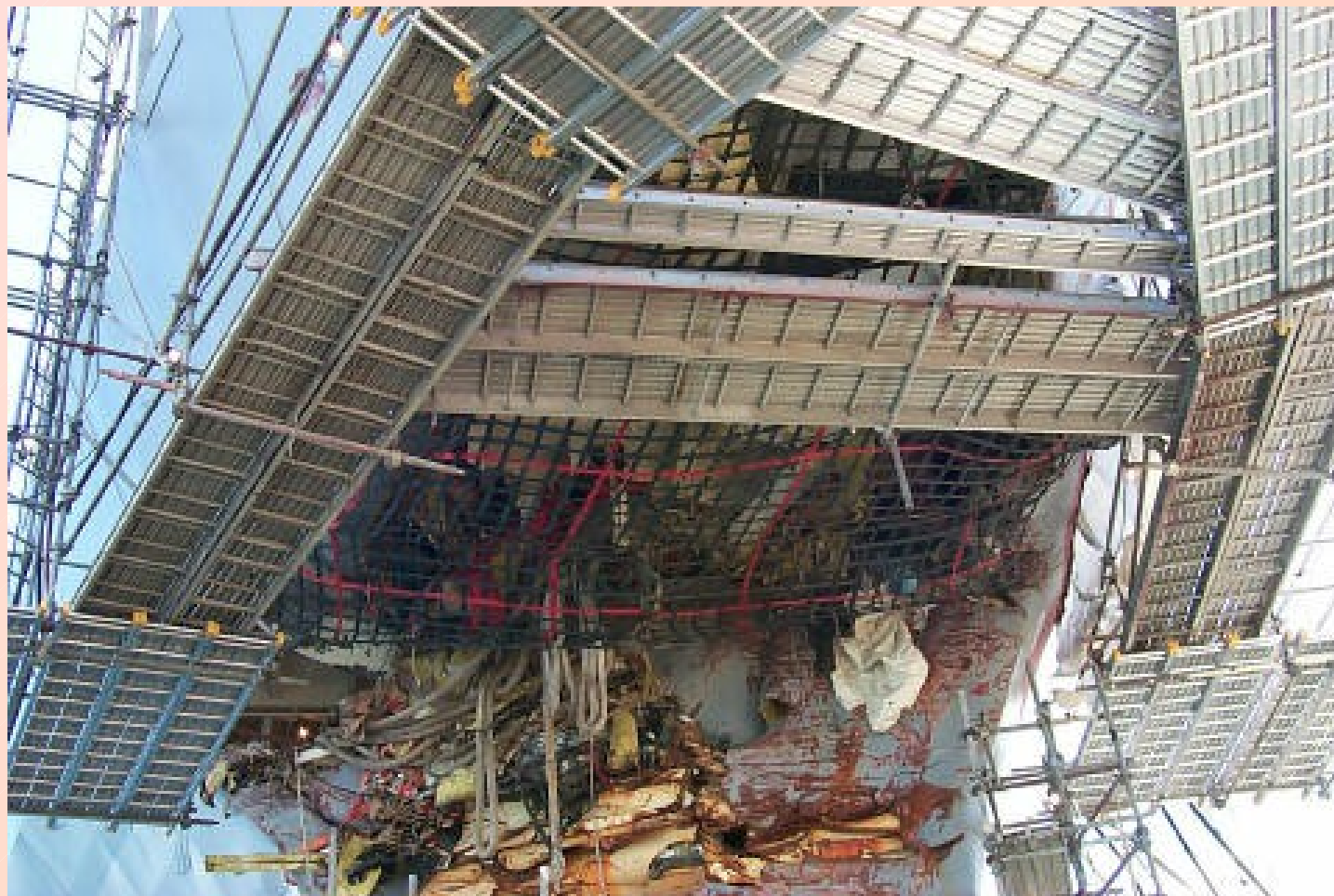
STAGING BELOW

Collision Damage USS DENVER LPD-9



CLOSE UP OF STAGING BELOW

Collision Damage USS DENVER LPD-9



**STAGING ABOVE - UNDERSIDE VIEW
NETTING SET UP TO CATCH DEBRIS**

Collision Damage USS DENVER LPD-9



DANGER OF DROPPING DEBRIS (E.G., SPOOL OF ROPE) AGITATED LOOSE, DROPPED AND REMOVED

Collision Damage USS DENVER LPD-9



LOWER STAGING DETAILS

Collision Damage USS DENVER LPD-9



LOWER STAGING STBD - BENT METAL TO BE CUT AWAY TO ALLOW WELDING OF FLAT PLATE TO HULL

Collision Damage USS DENVER LPD-9



REMOVAL OF BENT METAL STARTED AT WATERLINE

Collision Damage USS DENVER LPD-9



**REMOVAL OF BENT METAL COMPLETED, TEMPORARY
PATCH IN PLACE**