

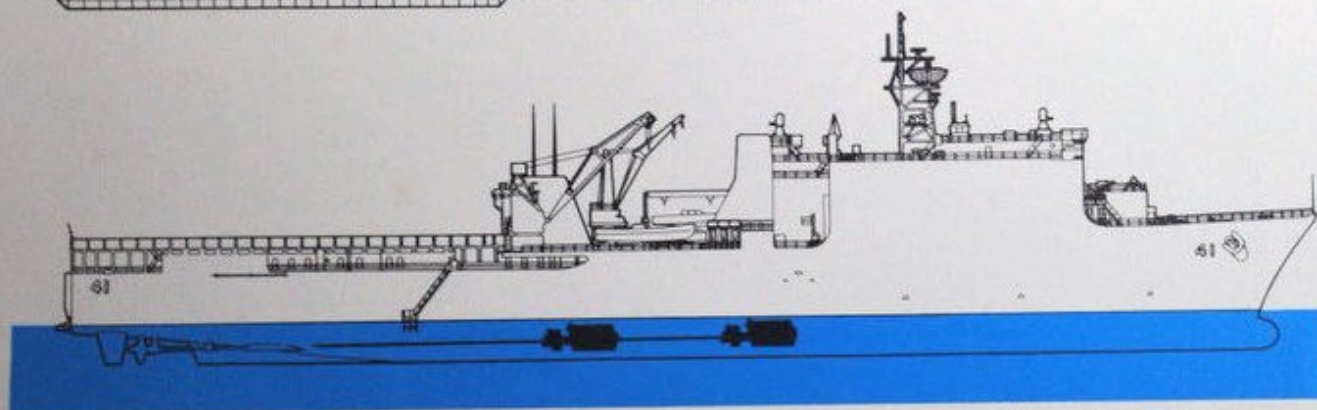
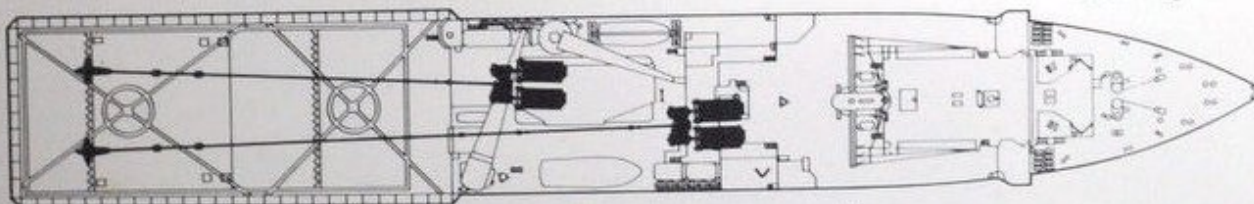
## The United States Navy Dock Landing Ship Program

# LSD-41

Colt-Pielstick\* PC2.5 marine diesel engines as being furnished to Avondale Shipyards Division for the LSD-41 and LSD-41 Cargo Variant programs provide a high horsepower, heavy duty engine with proven experience and reliability. More than 2,837 Pielstick\* marine engines have been sold with over 101 million hours of operating experience. Installations cover a wide range of naval and commercial service in fleets world-wide. Colt-Pielstick\* marine diesels allow maximum flexibility in ship design with minimum space and weight requirements. Fuel economy is outstanding - fuel savings of up to 30% or more are available as compared to conventional steam turbine systems.



U.S.S. Tortuga LSD-46



The LSD-41 mission is to carry Marine Corps troops and equipment for amphibious assault. Several engineering features have been incorporated into the LSD-41 design to improve the ship's capability and efficiency. It has an underwater bulbous bow, which reduces the wave-making resistance component and thereby improves the vessel's all-purpose fuel rate at designated speeds. The well deck, which can be flooded to allow landing craft to enter and leave at sea level, accommodates high-

speed air cushion landing craft. The LSD-41 is able to land troops via these new landing craft or by helicopters operating from landing spots on her stern. The ship design allows marine vehicles to be driven directly from their storage area to the well deck.

### SHIP DATA

Overall Length	609'-7"
Beam	84'-0"
Draft	19'-7"
Displacement	15,745 LT
Propellers	Twin Controllable Pitch

### ENGINE DATA

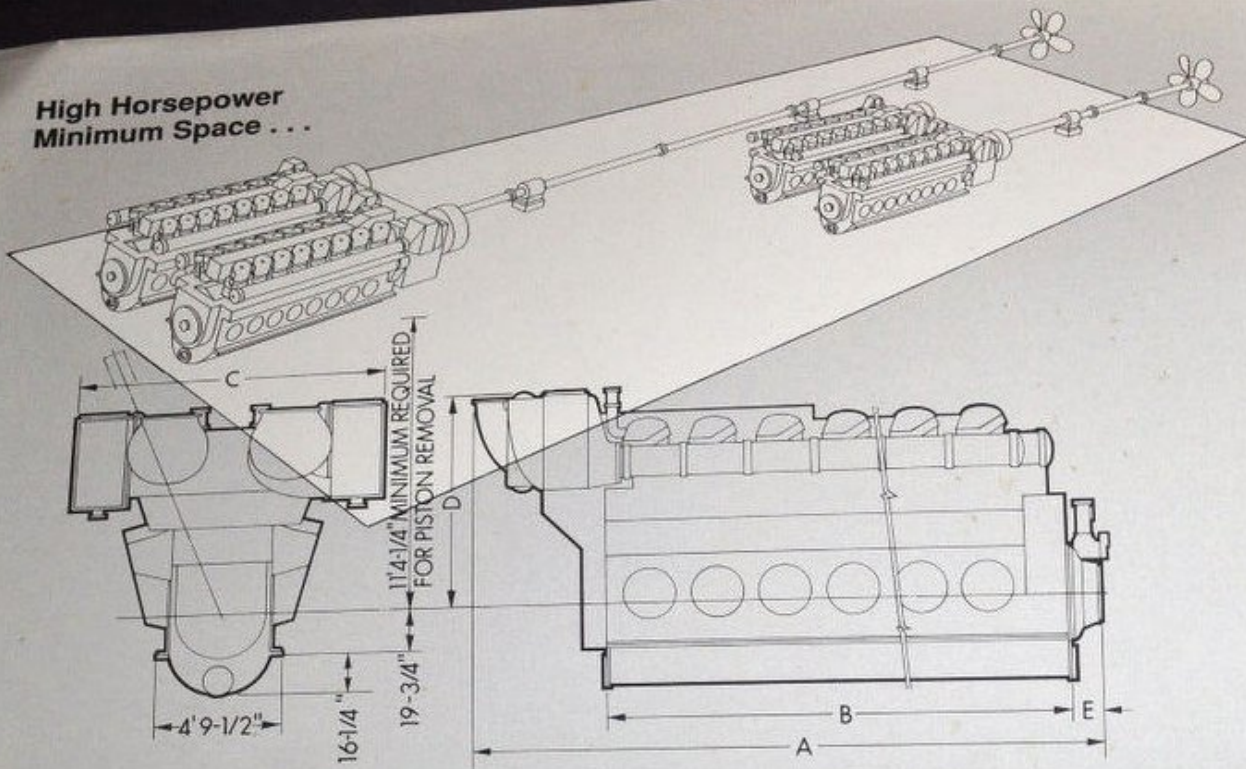
#### Propulsion Engines:

Model	Colt-Pielstick PC2.5V
No. Cylinders	16
Bore & Stroke	400 x 460 mm (15.75" x 18.11")

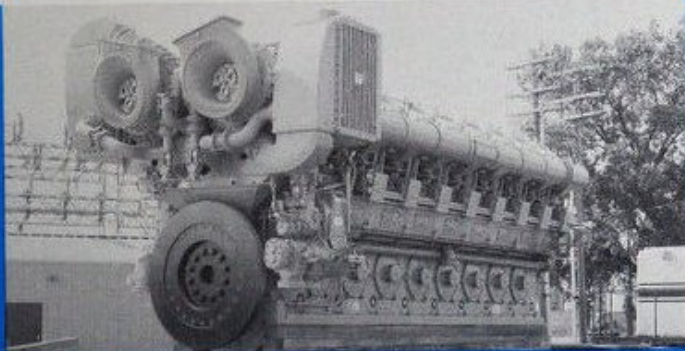
#### Generating Sets:

Type	Fairbanks Morse O-P 38D8-1/8
No. Cyls.	12
No. Per Ship	4
Rating	1,300 kW
RPM	720

**High Horsepower  
Minimum Space . . .**



No. of Cyls.	RPM	BHP PC2.5	A	B	C	D	E	Approx. Wt. Lbs.
12	520	7800	22' 7-1/2"	16' 7"	11' 5-3/4"	8' 5"	13-3/4"	144,200
14	520	9100	25' 0-5/8"	19' 0-1/8"	11' 5-3/4"	8' 5"	13-3/4"	161,200
16	520	10400	28' 0"	21' 5-1/4"	12' 1-3/4"	9' 8-1/4"	13-3/4"	178,200
18	520	11700	30' 5-1/8"	23' 10-3/8"	12' 1-3/4"	9' 8-1/4"	13-3/4"	195,200



Fairbanks Morse manufacturing capability is based on over 100 years of engine manufacturing experience. Skilled engineering and precision manufacturing have contributed to the outstanding success of Fairbanks Morse built engines. Colt-Pielstick® diesels are manufactured in the largest and most modern large engine facility in the U.S. Final test procedures for Colt-Pielstick® diesels are rigidly controlled so as to give the customer the utmost in reliability of operation.



S.E.M.T. - Pielstick is a registered trademark of Societe d' Etudes de Machines Thermiques Paris, France

All ratings subject to factory approved application.  
Dimensions are approximate and are for illustrative purposes only.

Printed in U.S.A.

File No. 3075 C

Coltec Industries



**Fairbanks Morse**

Engine Division