

*The Voyage of
USS Frederick
LST-1184*

*Western Pacific Ocean
1976*



***THE VOYAGE OF
U.S.S. FREDERICK
LST 1184
TO THE WESTERN
PACIFIC OCEAN
FOR THE DURATION OF
13 APRIL '76
THROUGH
1 DECEMBER '76***

COMMANDER ROGER M. DAILY

Commander DAILY is a native of Maine. He enlisted in the Marine Corps in 1951 and received a direct commission in the Corps. Upon completion of service with the Marines, Commander DAILY entered the Maine Maritime Academy, graduating three years later. He received a BMS degree and license as a Third Mate in the Merchant Marine.

Commander DAILY was called to active duty with the Navy during the Berlin Crisis in 1960 and augmented to regular service in 1962. His first sea assignment was to the duties of navigator aboard the USS NANTAHALA (AO-60) from 1960-61. This was followed by two more sea tours as First Lieutenant aboard the USS ARCTURUS (AF-52) from 1962-1963, and as Weapons Officer aboard the USS E.G. SMALL (DD 828) from 1964-65. Commander DAILY was then ordered to Defense Intelligence School in 1966 prior to being assigned to the 4th Division Team (Quang Tri, Republic of Vietnam) in 1967. Commander DAILY then received his first command, the USS DODGE COUNTRY (LST-722) from 1968 to 1969, from which he was ordered to the Naval War College, where he spent the last two years as an instructor in amphibious warfare. He assumed command of USS FREDERICK in July 1974. Commander DAILY has been ordered to Surface Warfare Development Group, Norfolk, Virginia.

Commander DAILY has been awarded the following medals: Air Medal with Numeral "4", Navy Commendation Medal with Combat "V", Combat Action Ribbon, (Army), P.U.C., Navy Meritorious Unit Citation, and various campaign ribbons.

Commander DAILY is married to the former Geraldine M. Goode of Bucksport, Maine. The DAILYs have four children, Francis, Christopher, Candace and Roger M. Jr., and currently reside in Bucksport, Maine.

COMMANDING OFFICER



COMMANDING OFFICER



COMMANDER STEPHEN G. YOUNG

Commander YOUNG is a native of Ontario, California. He graduated from Chaffey Mr. College, Etiwanda, California in 1957; the University of Southern California in 1961; and Rensselaer Polytechnic Institute, Troy, New York, in 1967. He received his commission through the NROTC program at the University of Southern California. His present date of rank to Commander is 4 February 1976.

Commander YOUNG served his first tour as Gunnery Officer aboard the USS PAUL REVERE (LPA-248) from June 1961 to March 1963. He was Executive Officer for Assault Craft DIV 13 from April 1963 to August 1964, followed by a tour as a weapons instructor, NROTC Rensselaer Polytechnic Institute, from August 1964 to February 1967. Following a brief period of broken service during 1967 as a management trainee for General Electric he served aboard USS BRISTOL (DD-857), as weapons officer, from September 1967 to April 1969. Commander YOUNG was assigned as Executive Officer aboard USS WEXFORD COUNTY (LST-1168) from May 1969 to May 1971. From June 1971 to July 1974 he was ship manning document coordinator with OPNAV. He then reported to the destroyer school for a one month PXO course, after which he served as Executive Officer aboard the USS MCKEAN (DD-784) from September 1974 to February 1976. Commander YOUNG's last assignment prior to assuming command of the USS FREDERICK was the prospective commanding officer course at the Naval Surface Warfare School, Coronado, California, from April to May 1976.

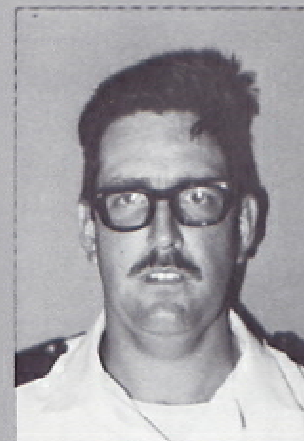
Commander YOUNG is authorized to wear the following medals: Navy Commendation Medal with Combat "V", National Defense Medal, and the Vietnam Campaign Medal.

Commander YOUNG is married to the former Irene Alba of Ontario, California. The YOUNGs have three children, Mark Stephen, Jeffrey Victor and Christine Robin, and currently reside in Del Mar, California.

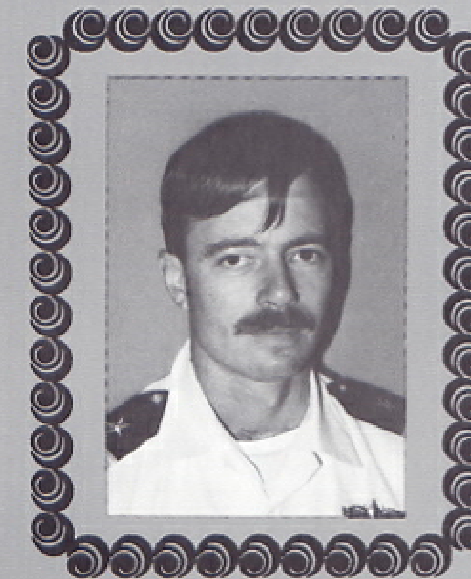
TABLE OF CONTENTS

1	Title Page
2-3	Commanding Officers
5	Officers
7	Engineering Department
8	M Division
11	A Gang
12	R Division
13	E Division
15	Deck Department
16	First Division
18	Second Division
20	Third Division
21	Operations Department
22	OC Division
23	OE/OI Division
24	N Division
25	Postal Clerk/Signalmen
26	X Division
27	Supply Department
31	Freddies Best
32	The Cruise
33	Hawaii
35	Thailand
37	Korea
39	Potpouri
40	Japan
42-43	Track Chart
44	Hong Kong
46	Sports in Guam
47	Subic Bay
49	Around Freddie
55	Tiger Cruise
56	Homecoming
58	Cruise Book Staff

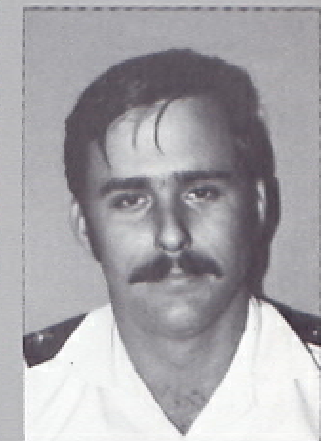
OFFICERS



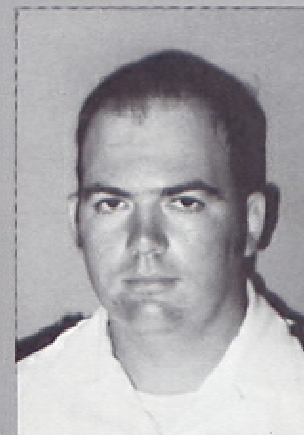
LT F.L. DENNIS
1stLT



LCDR H.A. LEVIEN
EXECUTIVE OFFICER



LT J.B. HARDEE
CHIEF ENGINEER



LTJG A.D. KNAPP
SUPPLY



LT D.A. DUNN
OPERATIONS

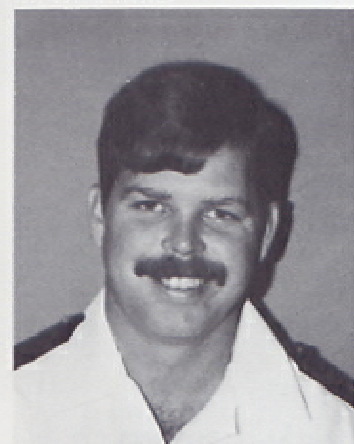
DIVISION OFFICERS



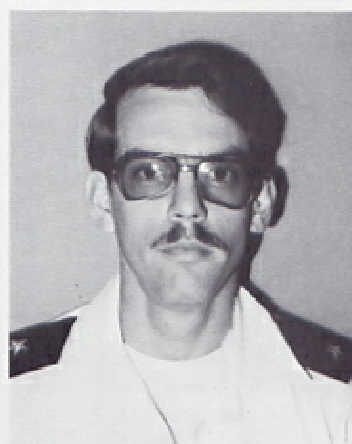
LTJG P.D. CARSTENS
1st DIVISION



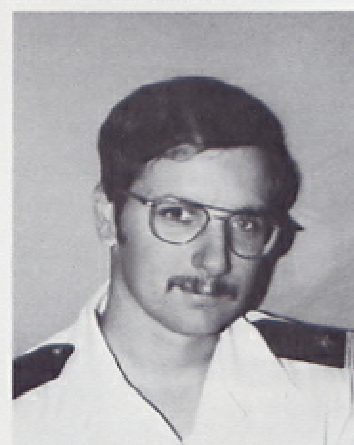
LTJG J.F. DEPPE
CIC



ENS M.N. KLETT
2nd & 3rd DIVISION



LTJG P.A. KISSLING
COMMUNICATIONS

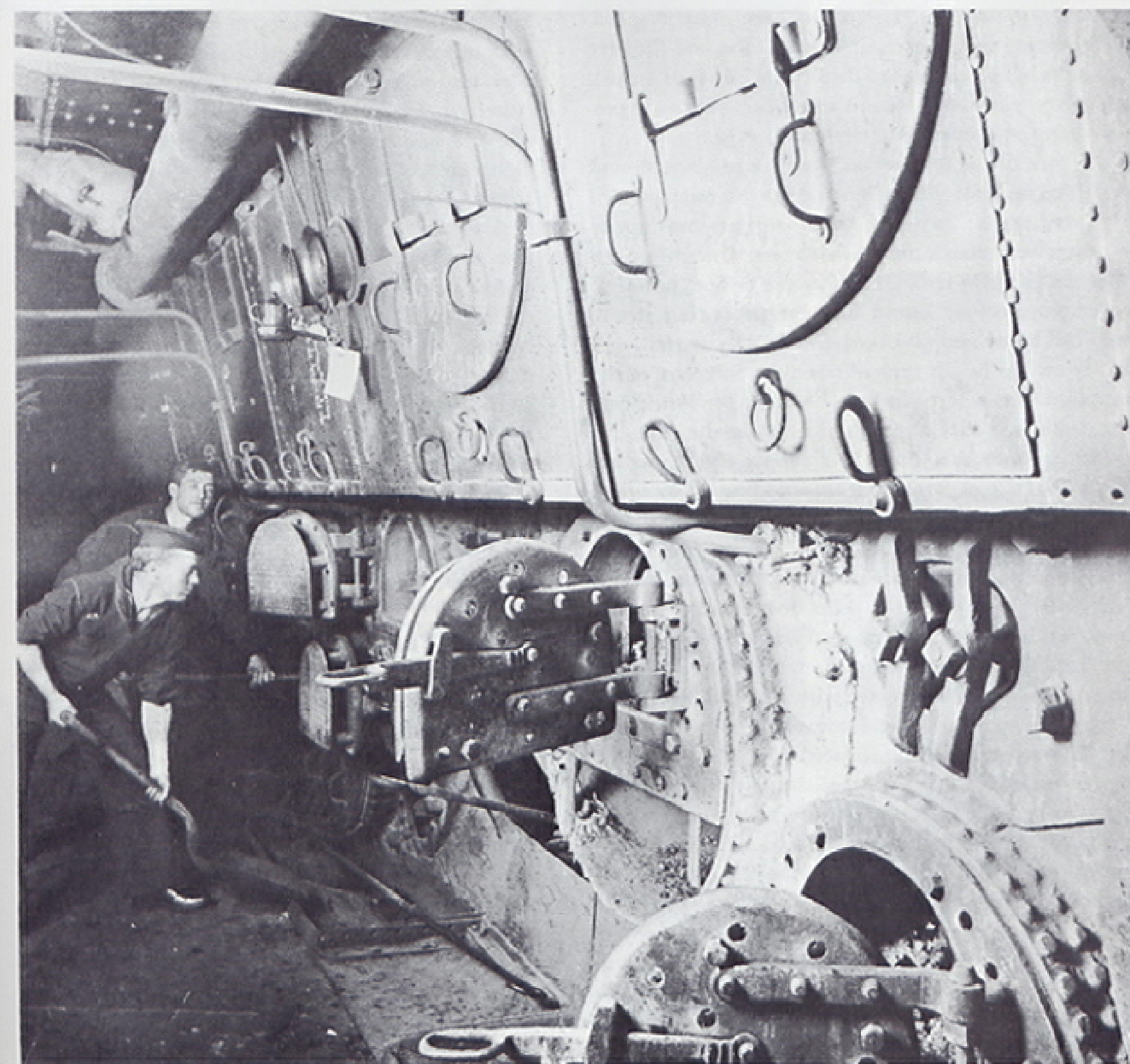


ENS E.C. TRASORAS
MPA

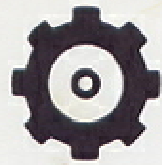


LTJG T.B. SERVICE
DCA

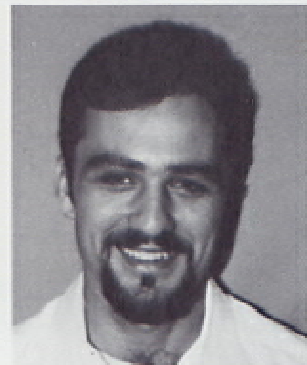
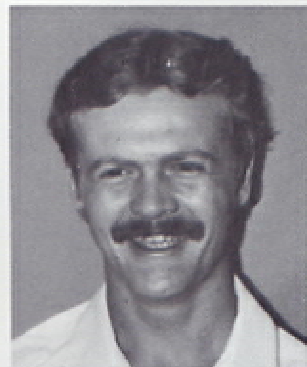
Engineering Dept.



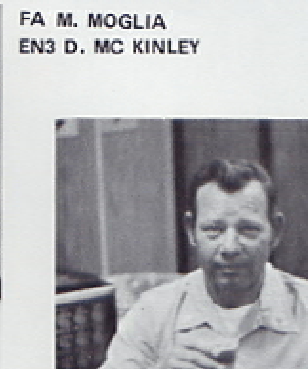
ENGINE ROOM OF U.S.S. FREDERICK 1909.



M DIVISION



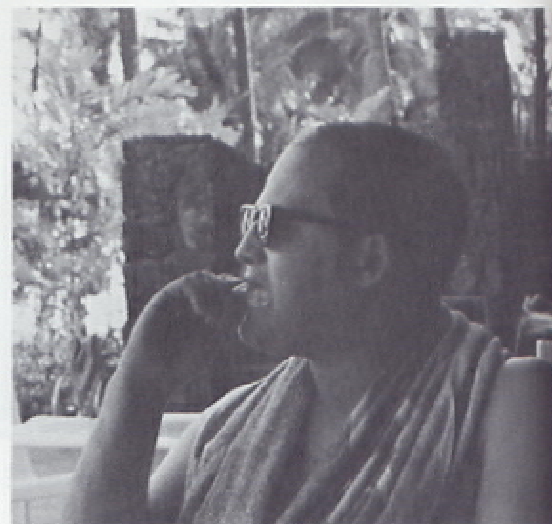
ENFN L.C. HORTON
EN3 M.A. BREESE
EN1 R.A. DEL ROSARIO



ENCM J.A. FISHER



EN3 L.D. REINHART
ENFA C. JENNINGS



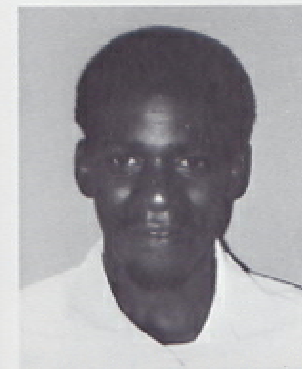
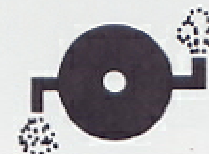
ENFN C.A. STILES
ENFA R.A. COLE



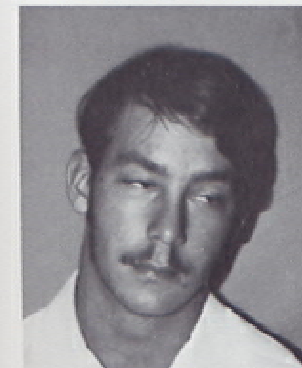
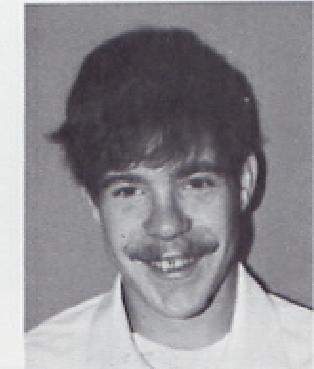
EN1 T.M. MALINA



EN3 S.K. REEVES



ENCS M. RUGENSTEIN



ENFN P. WINGATE
ENFA A.J. LEA



ENFN J.L. LEWIS



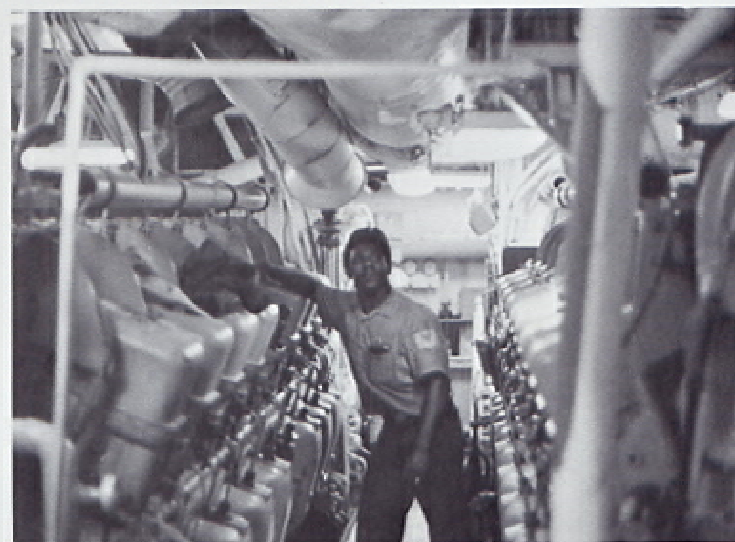
ENFN J.A. SHERRER



ENFA M.E. DAVIS
FA A.S. GARZA



ENC M.J. OTTO



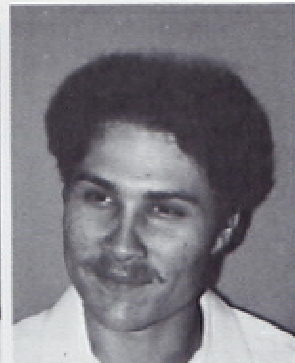
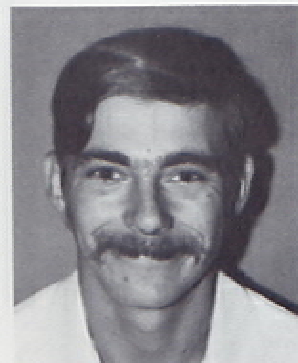
EN2 F.L. PRYOR
EN3 H.O. STONER



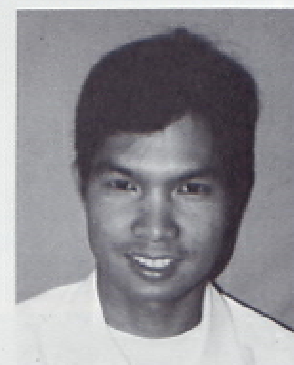
ENFA J.V. MURAWA
ENFA T. KILLION



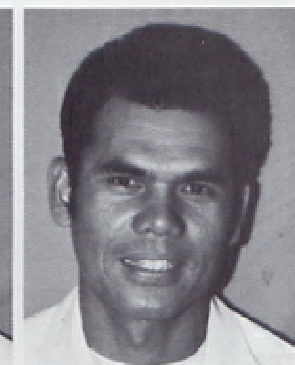
ENFN T.R. WIEDMAN
ENFA K.M. HALEY



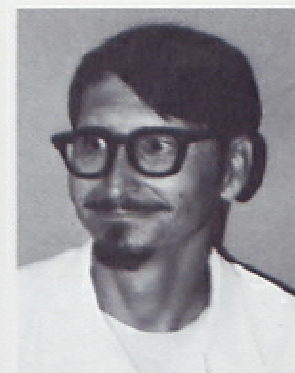
A GANG



EN3 N. CRISOSTOMO



EN1 R.H. MOE



MR1 T.L. GRAY
FN M.A. GEPPORD



FA J.E. MC CUISTION
FR D.N. BAWNER



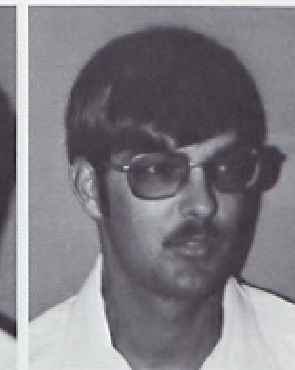
EN3 J.W. ALLEN



FN R.R. ORTIZ

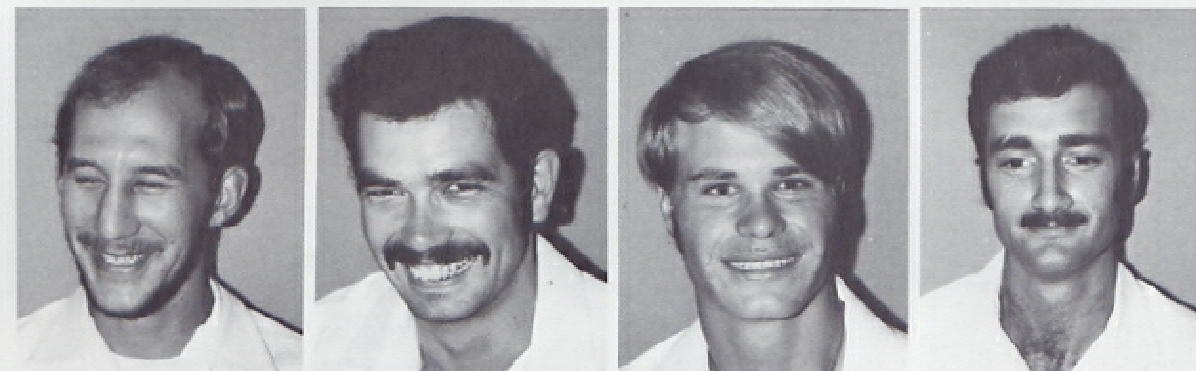


FA W.J. WIECZOREK



EN3 M. HEIDENTHAL

R DIVISION



HT2 M. SORENSEN



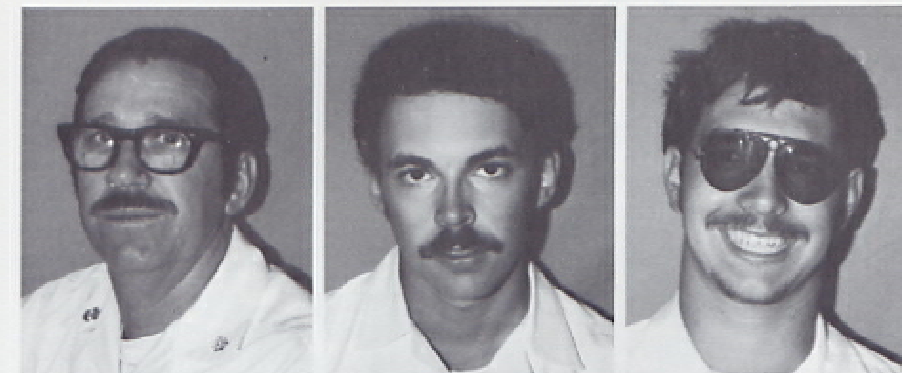
HTC S. WINSTEAD
HT3 G.L. EARNEST
HT3 W.A. BENDER

HT1 J. REICHARD
HTFN J. ROSS
HTFA D. MARRUJO

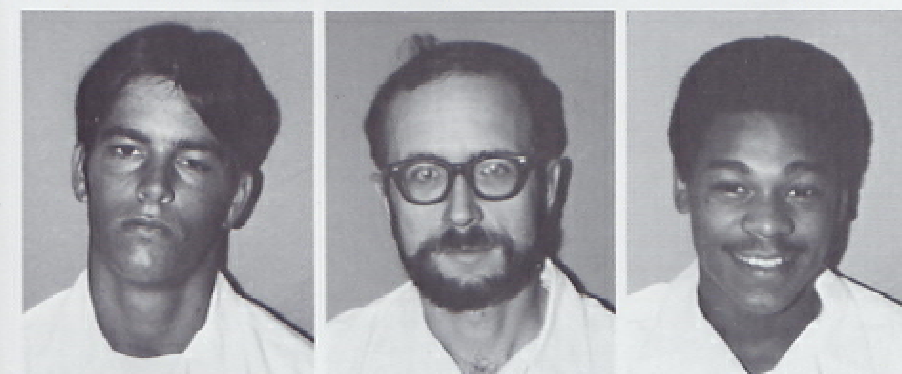
HT2 W.D. LEACH
HT3 R.C. JENNINGS
FN M.K. MIKAN



E DIVISION



EMFN M. HERRON



EMC W.L. COLLINS
EM2 E. BAUTISTA
EMFA M. BRICKLEY

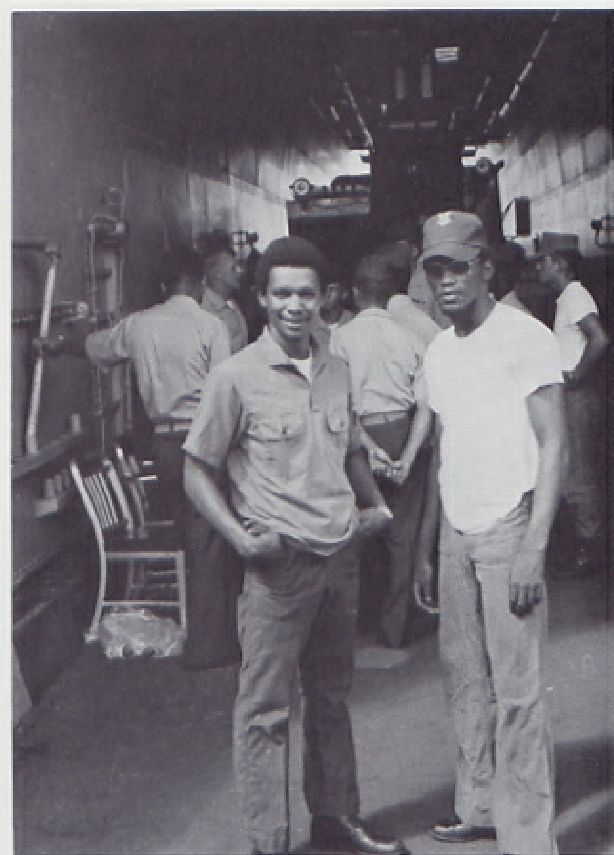
EM3 T.R. KORTA
E,3 J.R. STAMP
IC1 J. SANDBERG

EM3 V.B. BREEN
EM3 T. METOYER
IC3 D. STOKES

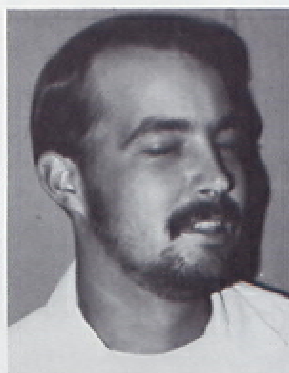




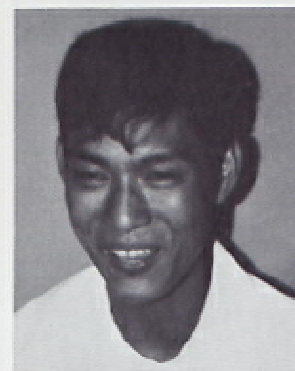
IC3 R. GAINES



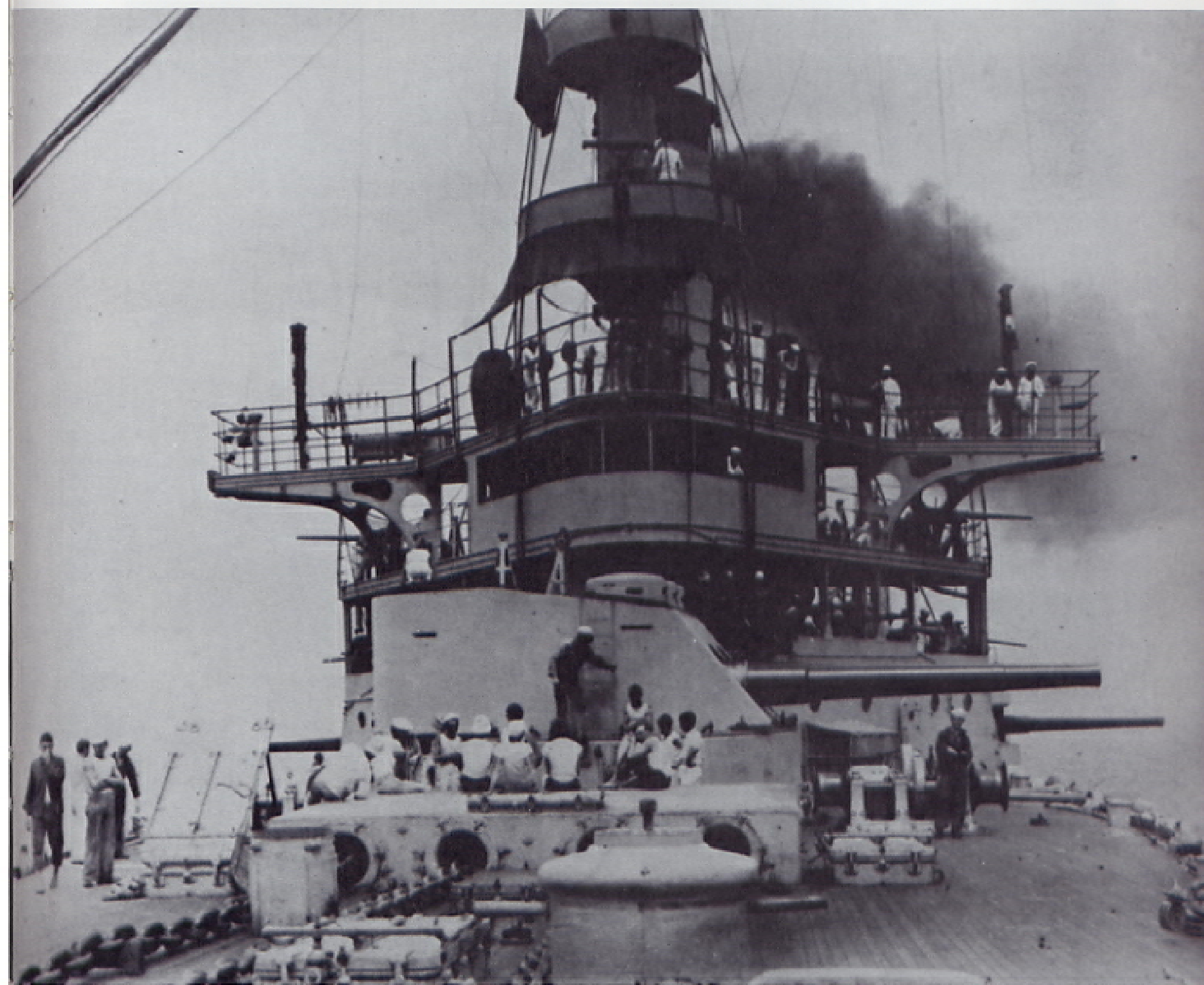
FN J.D. BARNETT
EMFN E. LACUZONG



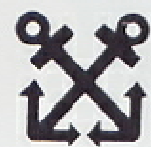
EM3 P.A. LOGAN
EMFN E.G. LIBAN



Deck Dept.



U.S.S. FREDERICK OFF THE PHILIPPINES 1906 FOR GUNNERY PRACTICE.



FIRST DIVISION



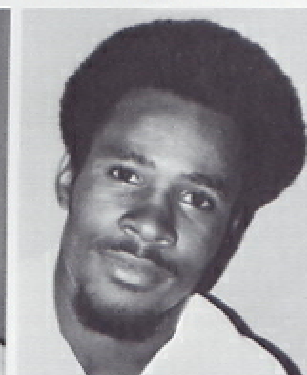
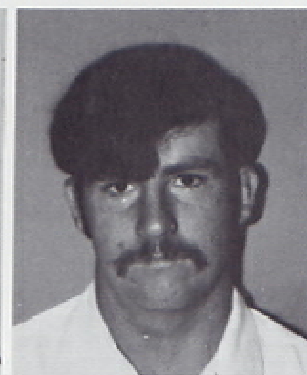
BM3 J.L. BEAVERS

SN M.S. SHUBIN



BM2 S.E. ANDERSON
BM3 E.T. LEWIS
SA J.J. MARTINEZ

BM3 G.D. BURTON
SA K.J. MADDOX
SA A.W. SIMMONS



SA D.M. KELLY
SN R.R. STOUT

SN D.A. RHOADES
BM3 C. THOMPSON

SN J.L. WILLIAMS
SA R.A. PUCKETT
SN J. ZIELINSKI

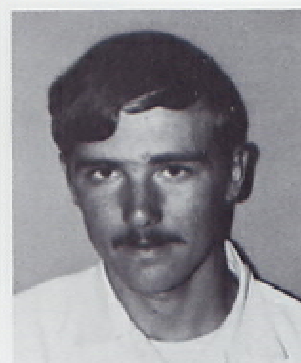


SA D.G. LUNNEY
SA L.E. ELROD
SR A.L. RAY





BMCS T.M. LEWIS



SA M. MOTSINGER



BM1 J.H. KINKAID
SA M.F. MAZZACANE
SA R.B. ATKINSON

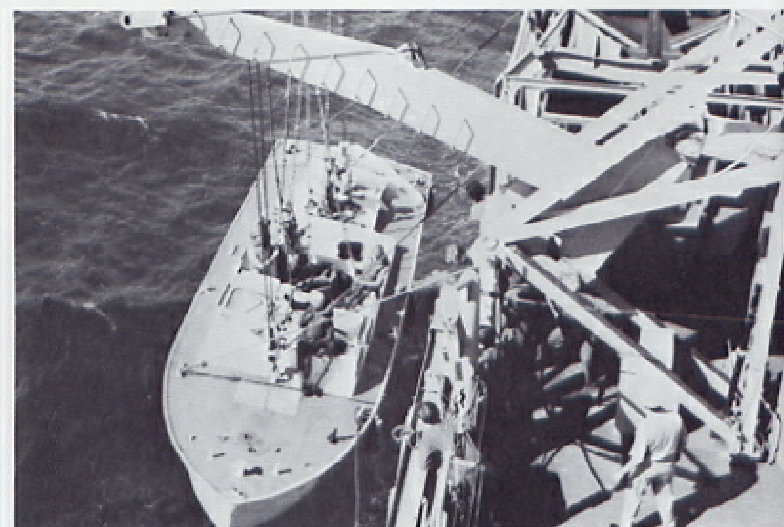


BM3 W.J. HILLMAN
SA D.J. WEST
SA J.D. YEAGER

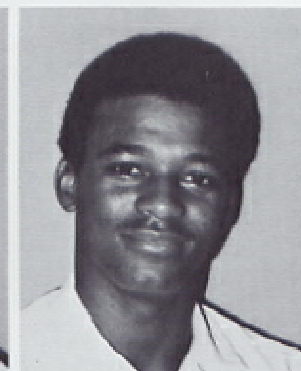
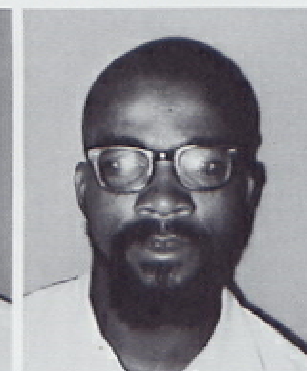


SN R. WHITAKER
SA D.P. KIGER
SN I.M. KERMAN

SECOND DIVISION



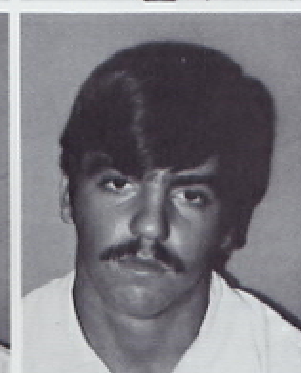
BORN FREE II



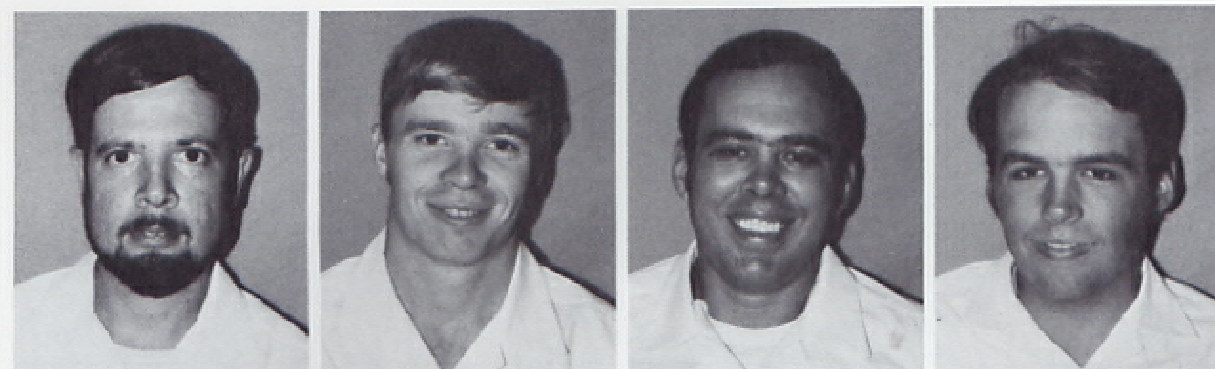
BM3 A.M. CASTRO
SN D.O. PAGADUAN
SA M.A. LANG



SN H.L. RUTLEDGE
SN D.D. DOBBS



SN Q.D. BIBBS
SN J.P. LARSEN



GMG3 D.C. BROWN
FTGSN A.W. EILERS

FTGSA R.E. GREENE
GMG3 W.H. SNOW

THIRD DIVISION



FTG2 E.A. MAJOR
FTGSN S.M. MARGIONI
FTG3 M.C. DOUGLAS

GMG3 P. VOURIOTIS
FTGSA W.A. HENNESEY
GMGSN G.L. WRIGHT



perations Dept.



FLAG HOIST PRACTICE ABOARD U.S.S. FREDERICK 1908.



RMC L. WEST

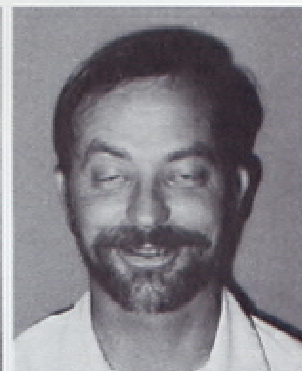
OC DIVISION



RM1 H.J. EASTON



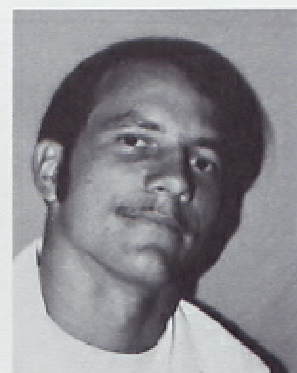
RM2 B.O. BROWN



RM2 R.C. THOMPSON



RM2 W.S. SCHUYLER



RMSN J.E. GORDON



RMSN E.E. MC ELYEA



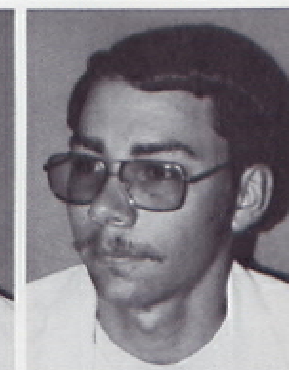
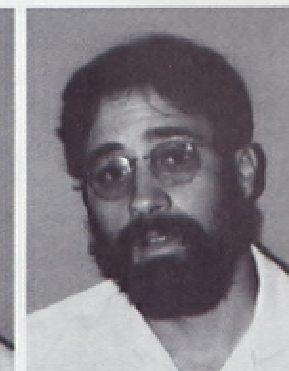
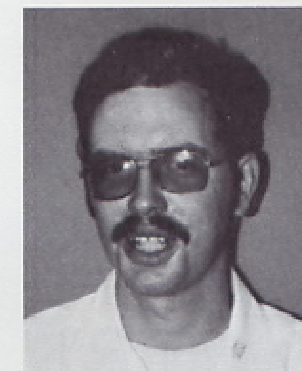
RM3 D. CANO



RM3 J.B. BERRY



OSC R.A. ESELTINE



OI DIVISION

OE DIVISION



ETR3 C. GULLEY
OS2 R. JORGENSEN
ETR2 S.D. BALL

OS2 J.V. WALLACE
OSSN J.R. PARRAZZO
ETN2 J.B. HENDERSON





ETR2 F.H. DAVIDSON



ET1 A.N. THOMPSON

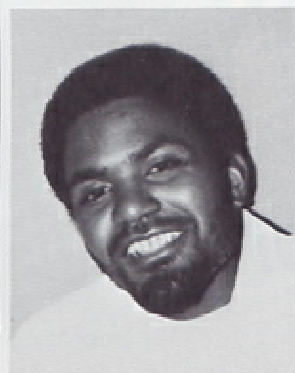
N DIVISION



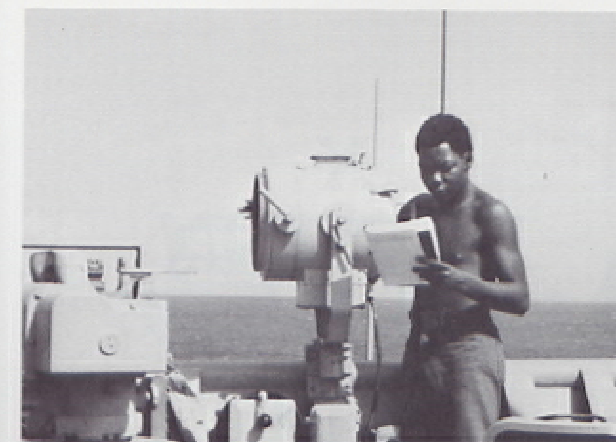
ETN3 J.A. BUSH
QM2 D.A. ALLISON



ETR3 K.R. PREST
QMSN P.N. BOUCARD



QM3 J.C. HARRIGAN
QM2 J.W. APPLETON



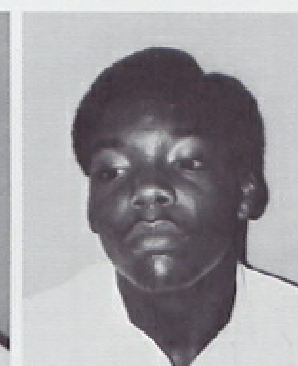
POSTAL CLERK SIGNALMEN



SM3 A.J. LETTS



SMSN M.C. LEVY



SMSN L.A. HINES



SMSN G.L. MALDANADO



PCSN I.D. GRAY



YNC R.W. SMITH

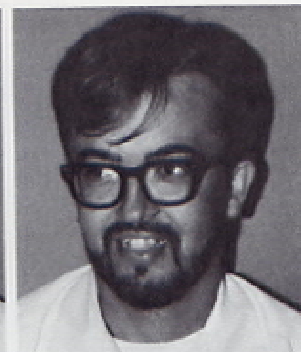


PN1 J.T. PANGANIBAN

X DIVISION



EN1 D.J. EMINIAN



YN2 P.R. WEINHOLD



PNSN J.R. JOHNS



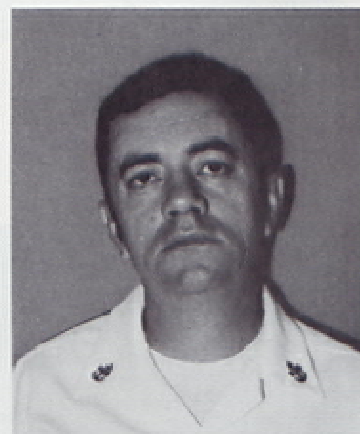
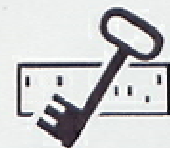
YNSN L.L. LOPEZ



Supply Dept.



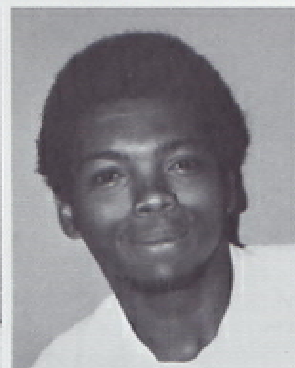
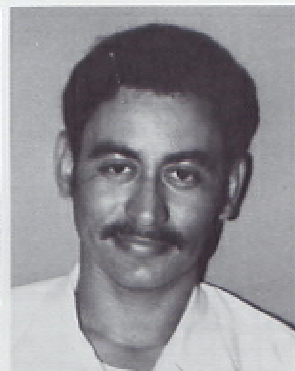
EVENING MEAL ABOARD U.S.S. FREDERICK 1909.



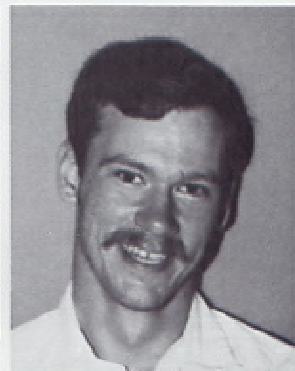
SKC G. MENDENHALL



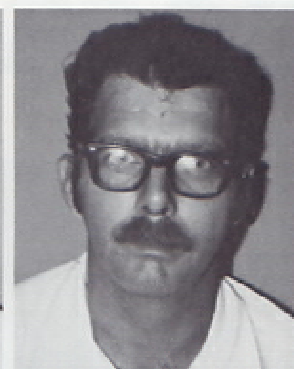
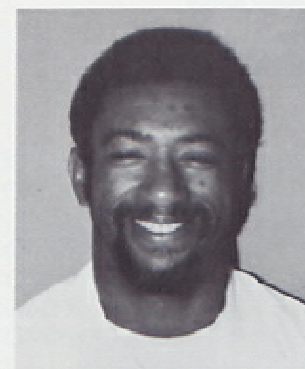
SK1 J.N. NAANOS
SKSN K.U. MURPHY



SHSN B.E. MITCHELL
SK2 F.L. GONZALES
SKSA D.E. DODD



DK1 R.R. GEMO
MSSA J.J. GORMAN
SKSA L. WASHINGTON



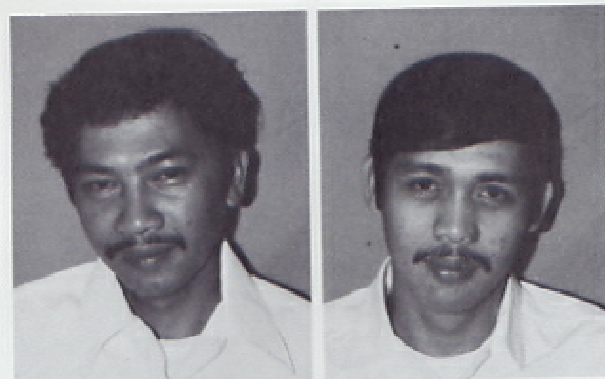
SH2 M.L. GRANT
MS1 C.G. SAN MIGUEL

MS1 R.A. SCHMIDT
MS3 H.A. MC GOWAN

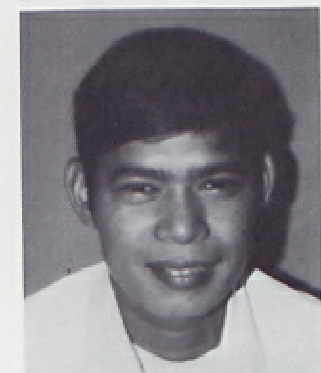


SH3 R.M. STOCKWELL
SH3 G.L. HENDRICKSON





MS3 D.S. GELACIO
MSSA R.E. FYANT



MS2 G.D. BAYANITO
MSSN R.K. JOHNSON
MS3 M.P. VITO



FREDDIES BEST

FM CTF SEVEN SIX
TO USS FREDERICK
INFO CINCPACFLT MAKALAPA HI
COMSEVENTHFLT
COMNAVSURFPAC SAN DIEGO CA
COMPHIBGRUEASTPAC
COMPHIBRON THREE
BT
UNCLAS//N01000//
SAYONARA

1. WHEN A SHIP OF THE TASK FORCE SO DISTINGUISHES ITSELF BY THE HIGHLY OUTSTANDING PERFORMANCE AND PROFESSIONALISM OF HER CREW, IT IS A MOST PLEASURABLE DUTY FOR THE COMMANDER TO RECOGNIZE THAT SUPERB PERFORMANCE. SINCE YOUR INCHOP SIX AND ONE HALF MONTHS AGO, YOU HAVE DEMONSTRATED THAT A POSITIVE APPROACH TO ALL CHALLENGES GOES A LONG WAY TOWARD IMPROVING AND MAINTAINING THE MATERIAL READINESS OF THE SHIP AS WELL AS THE MORALE OF HER CREW. YOUR LEVEL OF PROFESSIONALISM HAS BEEN DISPLAYED IN EVERY AREA, RANGING FROM OPPORTUNE LIFTS TO A SUPERB TURNOVER TO USS DURHAM.
2. YOUR TIRELESS EFFORTS IN KEEPING MY STAFF FULLY INFORMED HAVE NOT GONE UNNOTICED. FREDERICK IS A TOPNOTCH PERFORMER ACROSS THE BOARD AND YOU CAN BE IMMENSELY PROUD OF HER ACCOMPLISHMENTS. IT IS OBVIOUS FROM MY VANTAGE POINT THAT HER WARDROOM AND ENTIRE CREW HAVE THE SUPERLATIVE QUALITIES AND ATTITUDE THAT HAVE MADE FREDERICK A TRUE HEAD AND SHOULDERS PERFORMER.
3. I HAVE OBSERVED MAY FINE PERFORMANCES BY PHIDRON THREE SHIPS THROUGHOUT THIS MOST RECENT DEPLOYMENT, BUT FREDERICK REMAINS UNSURPASSED. I AM PROUD TO HAVE HAD FREDERICK SERVE UNDER ME; PLEASE TELL YOUR CREW THAT I ADMIRE, RESPECT AND ENVY THEM.
4. REGRET THE BAD WEATHER THAT HAS CONTINUOUSLY PLAGUED YOU, BUT IT APPEARS THAT RACINE HAS RELIEVED YOU IN THAT AREA. IT'S SUNSHINE ALL THE WAY BACK TO SAN DIEGO.

THE WESTPAC GATOR WISH YOU ALL THE BEST

5. WELL DONE. RADM J.H. MORRIS, USN.

THE CRUISE

WESTPAC Ports that we visited

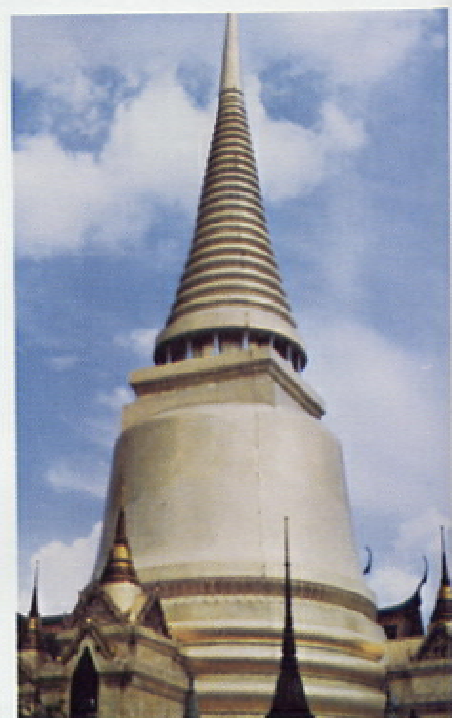
Kaohsuing	4 days
Pearl Harbor	4 days
Subic Bay	35 days
Sattihip (Thailand)	3 days
Sasebo	14 days
Pusan	4 days
Yokosuka	10½ days
Hong Kong	5 days
Inchon	5 days
Guam	8 days
Buckner Bay	4 days
Kin Red	4½ days
Numazu	2 days
Iwakani	4 days
Pohang	1½ days
Encountered or came close to 4 typhoons	

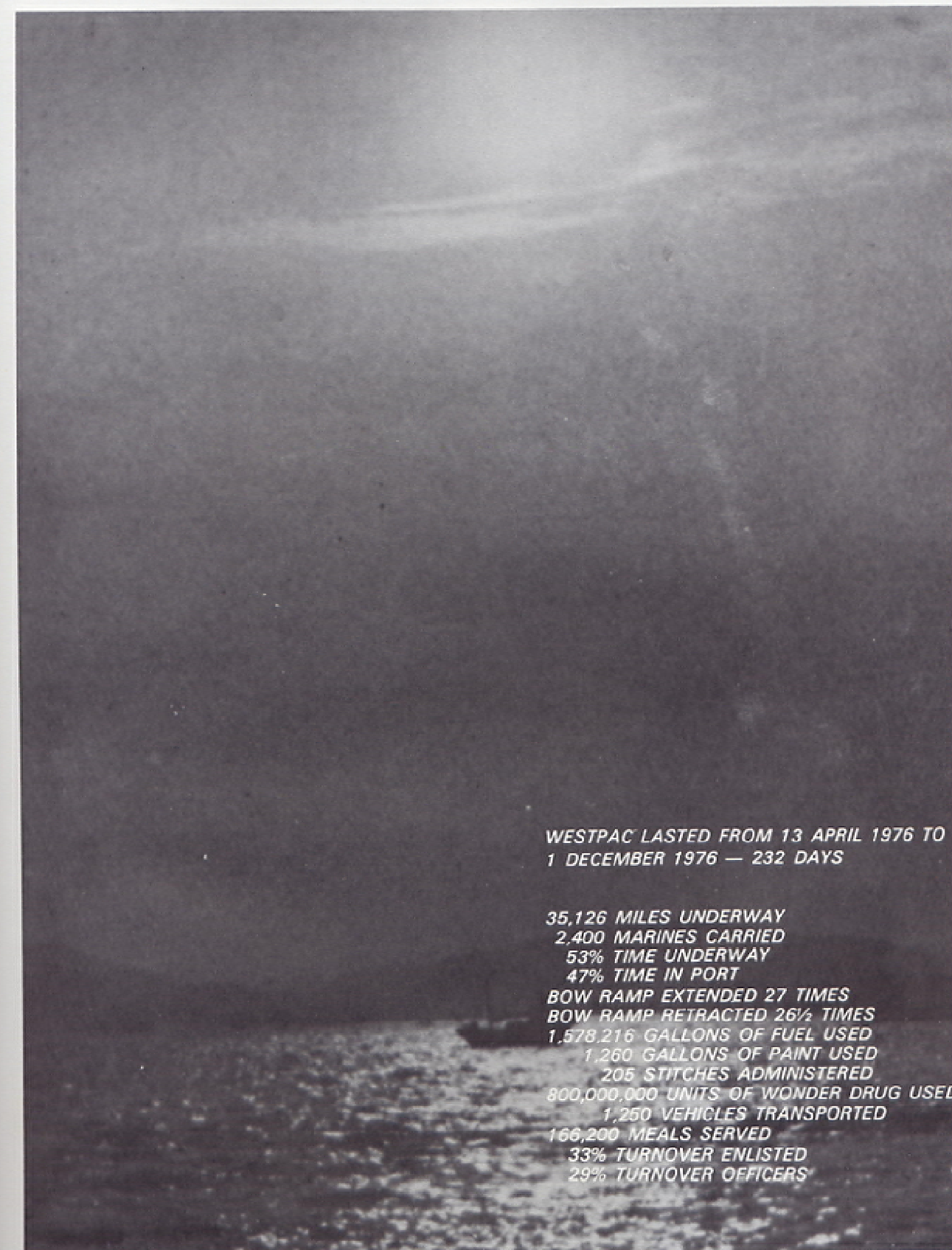




THAILAND



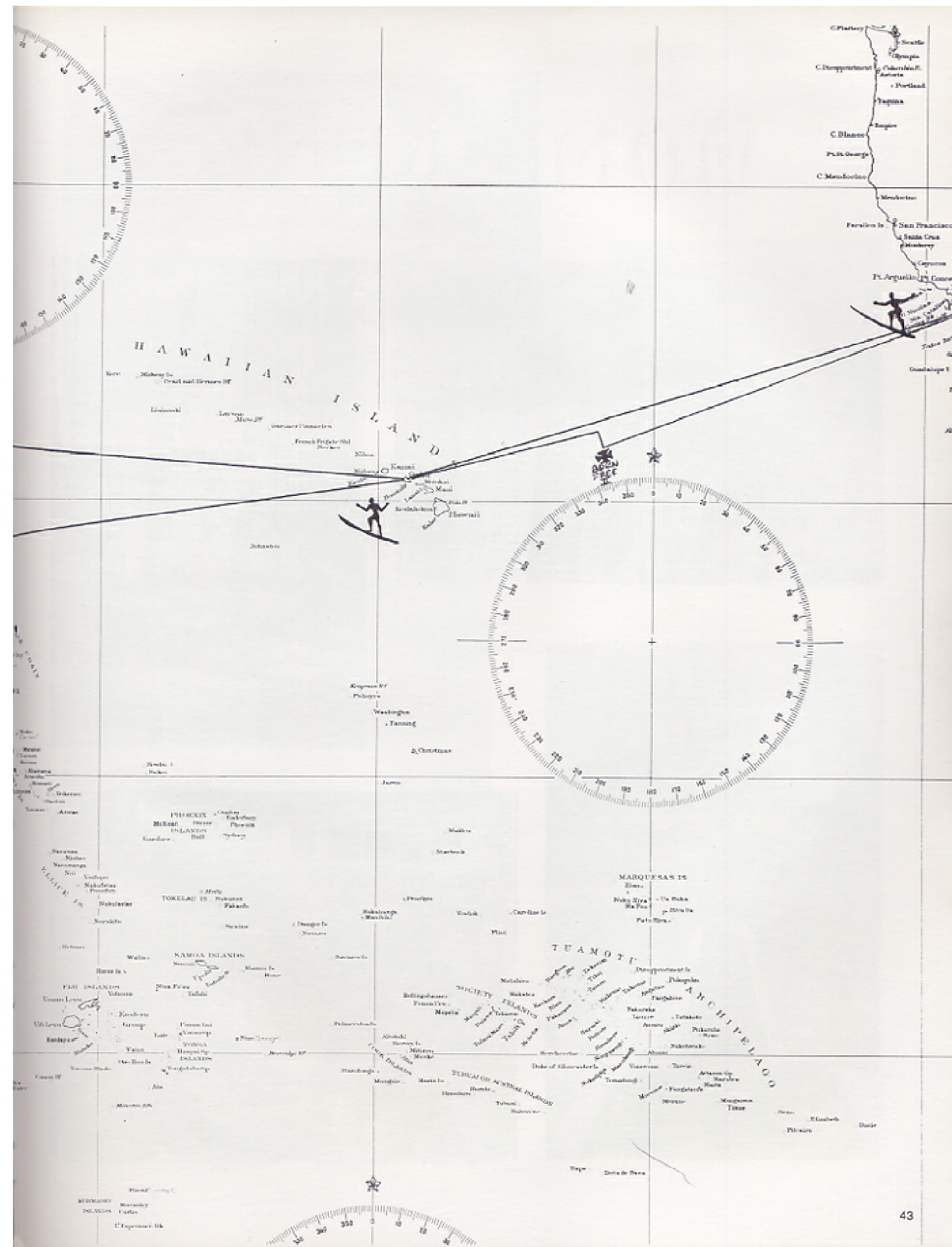
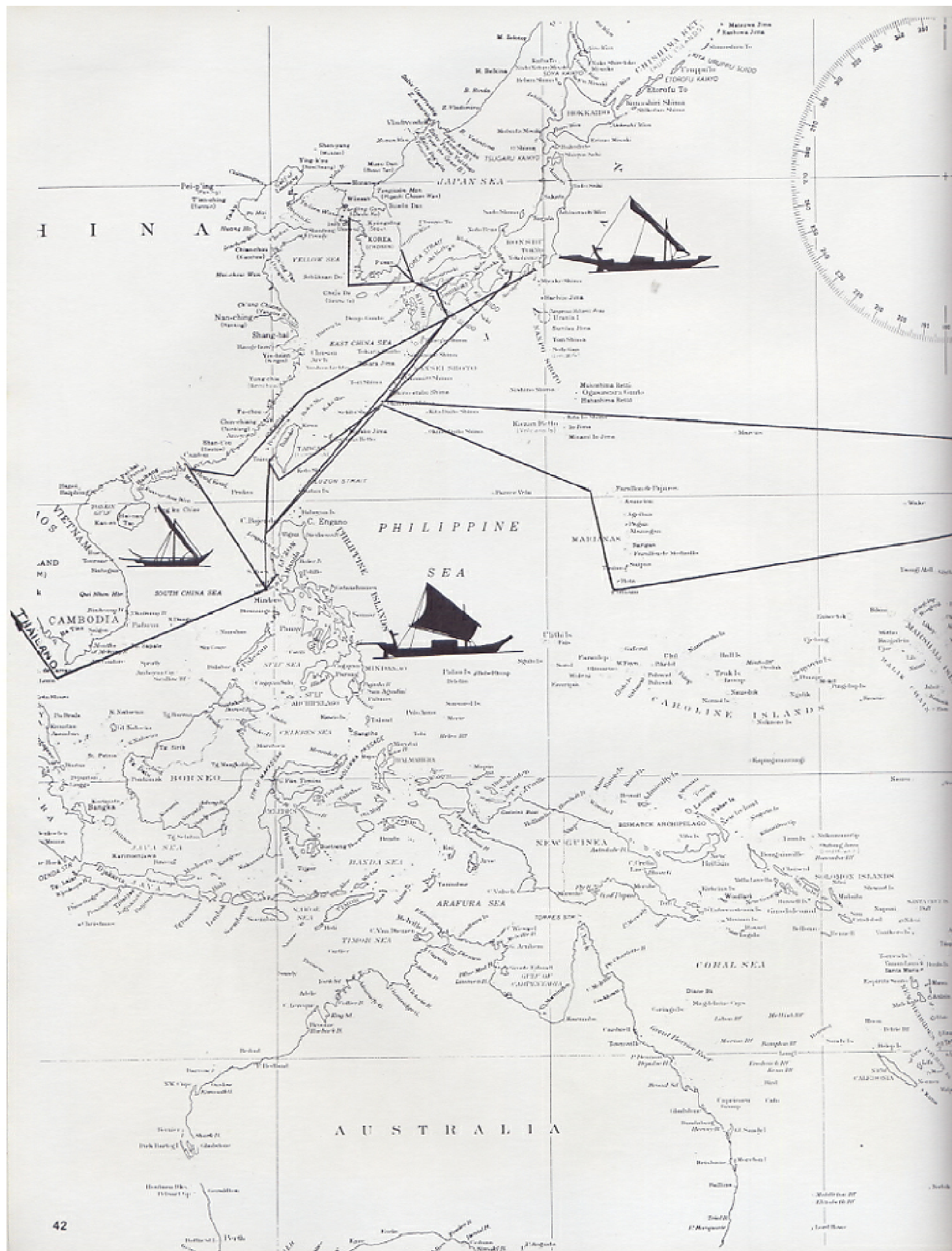




WESTPAC LASTED FROM 13 APRIL 1976 TO
1 DECEMBER 1976 — 232 DAYS

35,126 MILES UNDERWAY
2,400 MARINES CARRIED
53% TIME UNDERWAY
47% TIME IN PORT
BOW RAMP EXTENDED 27 TIMES
BOW RAMP RETRACTED 26½ TIMES
1,578,216 GALLONS OF FUEL USED
1,260 GALLONS OF PAINT USED
205 STITCHES ADMINISTERED
800,000,000 UNITS OF WONDER DRUG USED
1,250 VEHICLES TRANSPORTED
166,200 MEALS SERVED
33% TURNOVER ENLISTED
29% TURNOVER OFFICERS





HONG KONG

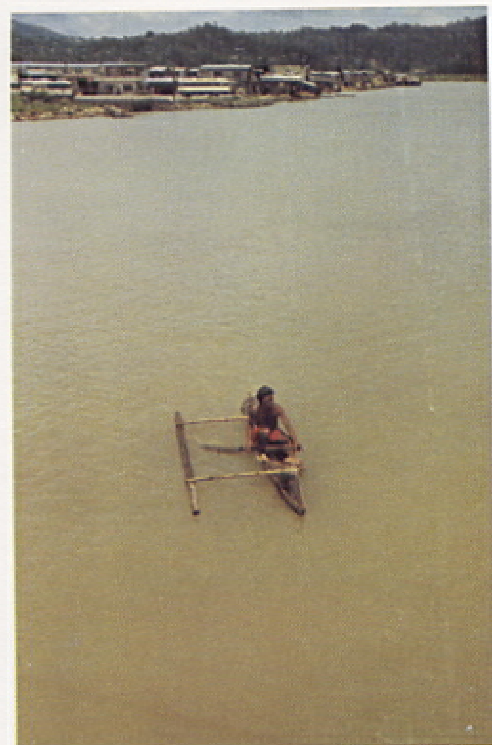


SPORTS IN GUAM

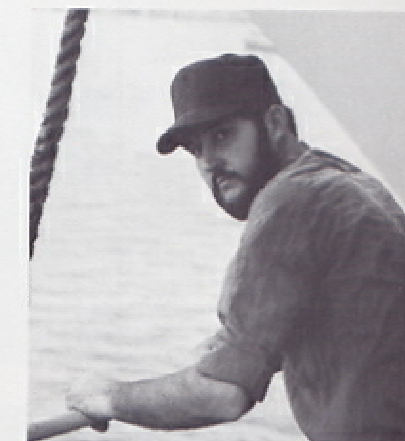


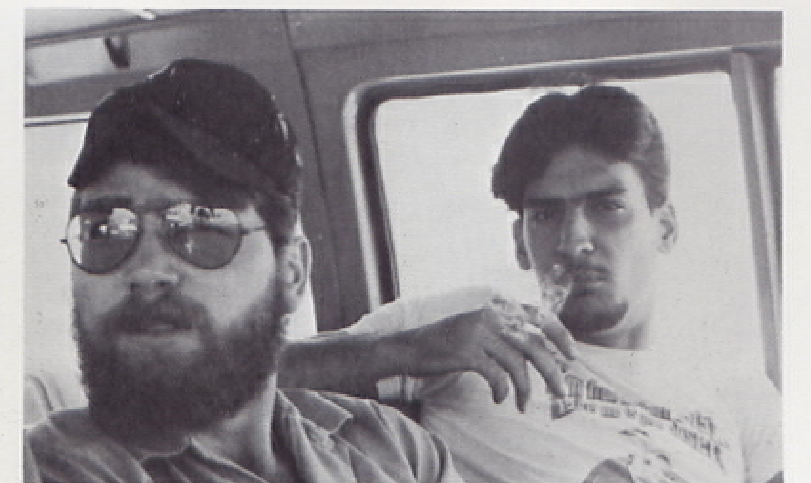
PLAY DAY

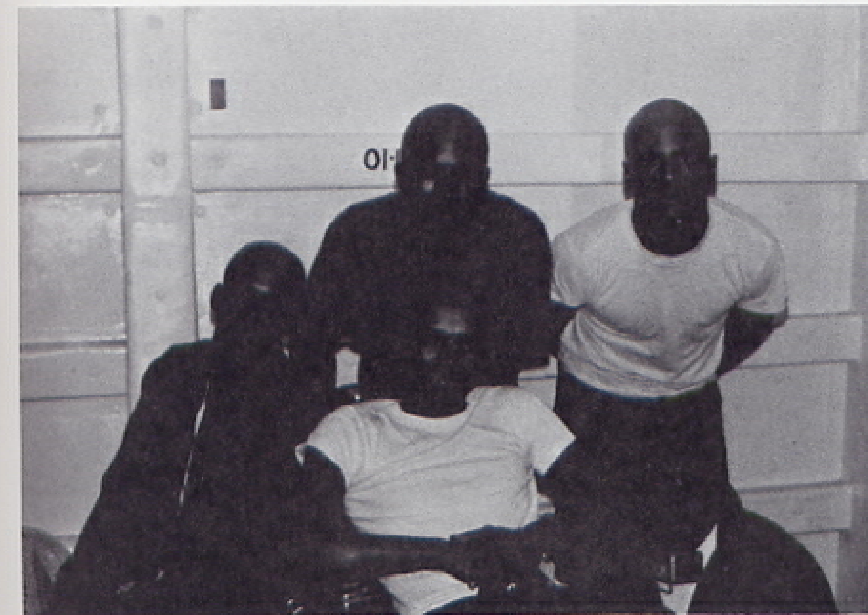
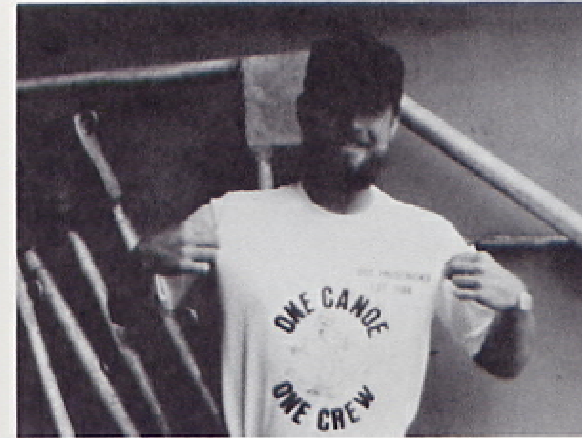
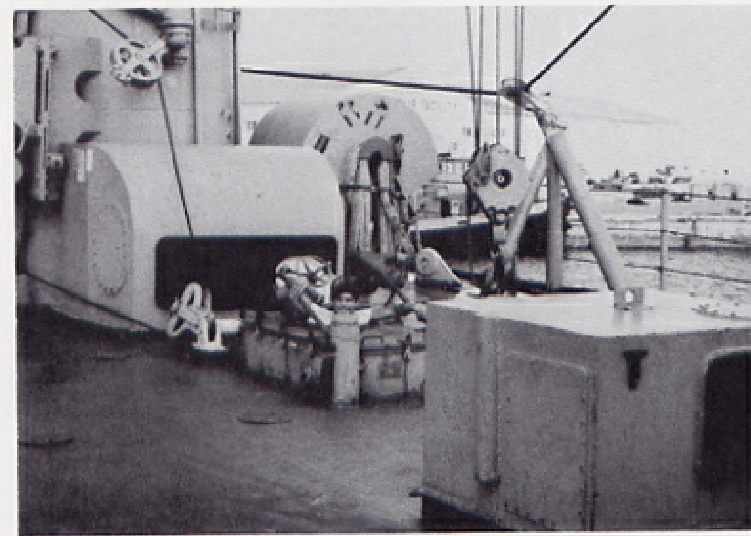


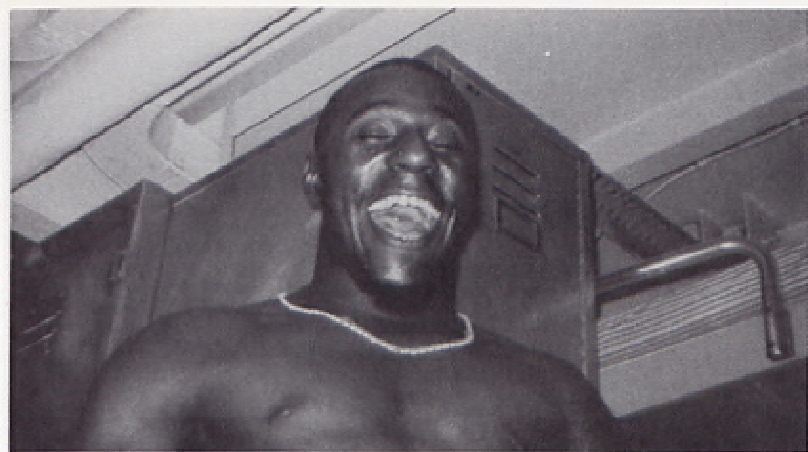


“AROUND FREDDIE”





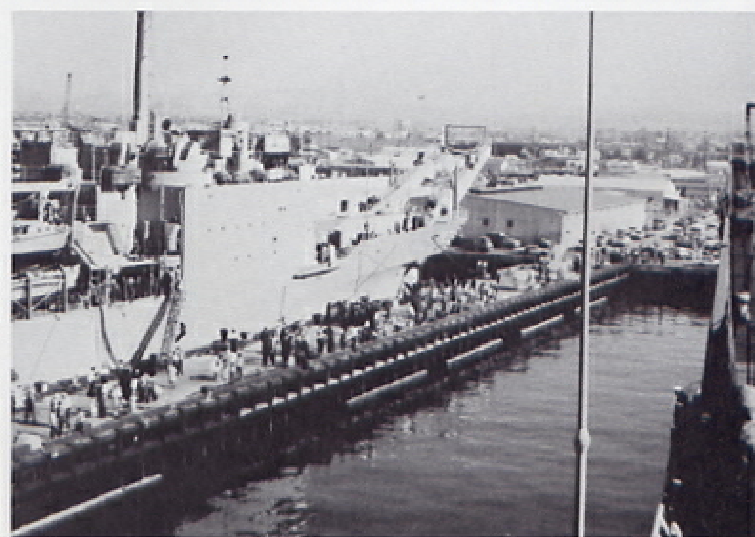




TIGER CRUISE



WELCOME HOME FREDDIE



CRUISE BOOK STAFF

CREDITS

EDITING:

LTJG E. C. TRASORAS, USN

PHOTOGRAPHY:

MAJOR CONTRIBUTORS

RM3 BERRY, HTFN PEACOCK

EN3 M.A. BREESE

ET3 GULLEY AND LTJG TRASORAS


ARTWORK:

EM3 E.C. BAUTISTA

EMFN E.C. LIBAN

OUR SPECIAL THANKS TO WALSWORTH
REPRESENTATIVES MR. GLENN MILLER AND
LAYOUT EDITOR NILA SHINTON.

WE EXPRESS OUR APPRECIATION TO THE
CREW FOR PHOTOGRAPHS CONTRIBUTED
AND PATIENCE AND UNDERSTANDING
WHILE WAITING FOR THIS BOOK TO BE PUT
TO PRESS.

WALSWORTH PUBLISHING COMPANY  Cruise Book Sales Offices
4438 Ingraham Street-Suite 202
San Diego, California 92109

