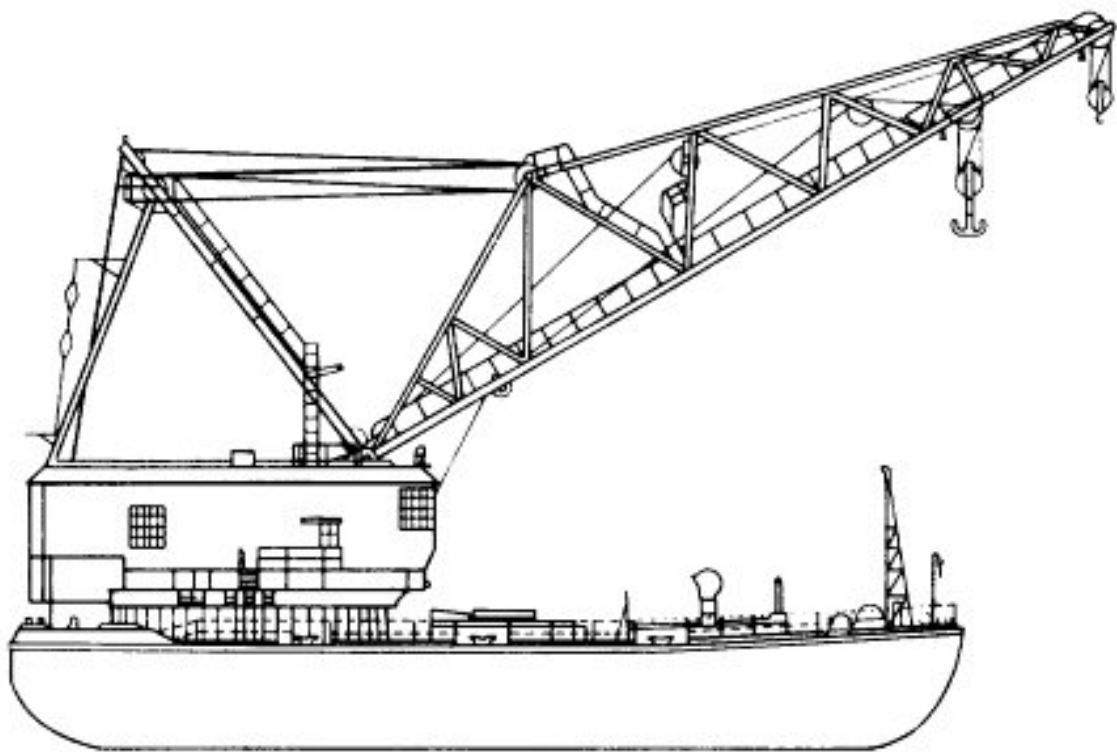


100-Ton Floating Crane (Design 264B)



100-Ton Floating Crane (Design 264B)

BARGE DATA

Length, overall	140 feet (ft)
Beam (molded)	70 ft
Depth (molded)	12 ft 6 inches (in)
Displacement (full load)	1,630 long tons (LTONS)
Draft (full load): mean	6 ft 3 1/4 in
Freeboard (full load): mean	6 ft 2 3/4 in
Capacity:	
Fuel	15,000 gallons (gal)
Lube oil	110 gal
Potable water	6,700 gal
Anchors (2)	4,200 pounds (lb) stockless
Anchor chains (2)	30 fathoms, 1 1/2 in

GENERATOR DATA

Main generators (2):	
Current	DC
Output	125 kilowatts (kw)
Voltage	240 VDC
Engines (2):	
Type	diesel
Horsepower	200 brake horsepower (BHP) @ 514 RPM each
Auxiliary generators (2):	
Current	3-phase AC
Output	30 kw
Voltage	240/277 VAC
Engines (2):	
Type	diesel
Horsepower	70 BHP @ 1,800 RPM

CRANE DATA

Main hoist:	
Boom length	123 ft 6 in
Main block:	
Capacity	200,000 lb @ 80-ft radius; 168,000 lb @ 104-ft 6-in radius
Speed	14 ft per minute (FPM)
Auxiliary hoist:	
Capacity	56,000 lb @ 122-ft 6-in radius
Speed	80 FPM
Reach below waterline	25 ft
Operating range	360°
Rotating speed	0.333 revolutions per minute (RPM)
Hoist, gear-driven:	
Size of drums (4):	
Main (2)	51 in x 98 7/8 in
Boom luffing (1)	75 in x 90 7/8 in
Auxiliary (1)	36 in x 89 1/4 in
Drum line pull:	
Main	16,150 lb each
Boom luffing	49,000 lb for 2 ropes
Auxiliary	9,065 lb
Wire rope (improved plow steel):	
Main	6 x 37, 1 1/8-in diameter, 2,530 ft
Boom luffing (2)	6 x 30, 1 1/4-in diameter, 1,050 ft
Auxiliary	6 x 37, 7/8-in diameter, 1,100 ft

100-Ton Floating Crane (Design 264B)

- | | | |
|----------------------------|--|------------------------------|
| 1 ANCHOR WINDLASS | 10 COUNTERWEIGHT BOX | 18 TRIPLE ROLLER CHOCK |
| 2 AUXILIARY HOIST | 11 CREW'S QUARTERS | 19 VENTILATOR |
| 3 BOLTED WT HATCH | 12 ENGINE ROOM, DIESEL - ELECTRIC GENERATING
PLANTS AND AUXILIARY PLANT | 20 WALKWAY |
| 4 BOLTED WT HATCH | 13 EXHAUST VENTS | 21 9-IN CLOSED CHOCK |
| 5 BOOBY HATCH | 14 FILL CAPS | 22 10-IN DOUBLE BITT |
| 6 BOOM CRADLE | 15 MAIN HOISTS | 23 10-IN x 24-IN HATCHES |
| 7 BOOM HOIST | 16 OPERATOR'S CAB | 24 18-IN x 24-IN HATCH P & S |
| 8 CAPSTAN | 17 SWINGER | 25 48-IN CLEAT |
| 9 CHAIN LOCKER BELOW P & S | | |

